



## ERA-Interim/Land: a global land surface reanalysis data set

G. Balsamo<sup>1</sup>, C. Albergel<sup>1</sup>, A. Beljaars<sup>1</sup>, S. Boussetta<sup>1</sup>, E. Brun<sup>2</sup>, H. Cloke<sup>3</sup>, D. Dee<sup>1</sup>, E. Dutra<sup>1</sup>, J. Muñoz-Sabater<sup>1</sup>, F. Pappenberger<sup>1</sup>, P. de Rosnay<sup>1</sup>, T. Stockdale<sup>1</sup>, and F. Vitart<sup>1</sup>

<sup>1</sup>European Centre for Medium-Range Weather Forecasts (ECMWF), Reading, UK

<sup>2</sup>Météo-France, Toulouse, France

<sup>3</sup>University of Reading, Reading, UK

Correspondence to: G. Balsamo (gianpaolo.balsamo@ecmwf.int)

Received: 9 November 2013 – Published in Hydrol. Earth Syst. Sci. Discuss.: 4 December 2013

Revised: 7 December 2014 – Accepted: 13 December 2014 – Published: 21 January 2015

**Abstract.** ERA-Interim/Land is a global land surface reanalysis data set covering the period 1979–2010. It describes the evolution of soil moisture, soil temperature and snowpack. ERA-Interim/Land is the result of a single 32-year simulation with the latest ECMWF (European Centre for Medium-Range Weather Forecasts) land surface model driven by meteorological forcing from the ERA-Interim atmospheric reanalysis and precipitation adjustments based on monthly GPCP v2.1 (Global Precipitation Climatology Project). The horizontal resolution is about 80 km and the time frequency is 3-hourly. ERA-Interim/Land includes a number of parameterization improvements in the land surface scheme with respect to the original ERA-Interim data set, which makes it more suitable for climate studies involving land water resources. The quality of ERA-Interim/Land is assessed by comparing with ground-based and remote sensing observations. In particular, estimates of soil moisture, snow depth, surface albedo, turbulent latent and sensible fluxes, and river discharges are verified against a large number of site measurements. ERA-Interim/Land provides a global integrated and coherent estimate of soil moisture and snow water equivalent, which can also be used for the initialization of numerical weather prediction and climate models.

Global Land–Atmosphere Coupling Experiments (Koster et al., 2006, 2009, 2011). The land surface state estimates used in those studies were generally obtained with offline model simulations, forced by 3-hourly meteorological fields from atmospheric reanalyses, and combined with simple schemes to address climatic biases. Bias corrections of the precipitation fields are particularly important to maintain consistency of the land hydrology. The resulting land surface data sets have been of paramount importance for hydrological studies addressing global water resources (e.g. Oki and Kanae, 2006). A state-of-the-art land surface reanalysis covering the most recent decades is highly relevant to foster research into intraseasonal forecasting in a changing climate, as it can provide consistent land initial conditions to weather and seasonal forecast models.

In recent years several improved global atmospheric reanalyses of the satellite era from 1979 onwards have been produced that enable new applications of offline land surface simulations. These include ECMWF's (European Centre for Medium-Range Weather Forecasts) Interim reanalysis (ERA-Interim; Dee et al., 2011) and NASA's Modern Era Retrospective-analysis for Research and Applications (MERRA; Rienecker et al., 2011). Simmons et al. (2010) have demonstrated the quality of ERA-Interim near-surface fields by comparing with observations-only climatic data records. Balsamo et al. (2010a) evaluated the suitability of ERA-Interim precipitation estimates for land applications at various timescales from daily to annual over the conterminous US. They proposed a scale-selective rescaling method to address remaining biases based on the Global Precipitation Climatology Project monthly precipitation data (GPCP; Huffman et al., 2009). This bias correction method ad-

### 1 Introduction

Multimodel land surface simulations, such as those performed within the Global Soil Wetness Project (Dirmeyer, 2011; Dirmeyer et al., 2002, 2006), combined with seasonal forecasting systems have been crucial in triggering advances in land-related predictability as documented in the

dresses issues related to systematic model errors and non-conservation typical of data assimilation systems (Berrisford et al., 2011). Szczypta et al. (2011) have evaluated the incoming solar radiation provided by the ERA-Interim reanalysis with ground-based measurements over France. They showed a slight positive bias, with a modest impact on land surface simulations. Decker et al. (2012) confirmed these findings using flux tower observations and showed that the land surface evaporation of ERA-Interim compared favourably with the observations and with other reanalyses.

Offline land surface only simulations forced by meteorological fields from reanalyses are not only useful for land-model development but can also offer an affordable mean to improve the land surface component of reanalysis itself. Reichle et al. (2011) have used this approach to generate an improved MERRA-based land surface product (MERRA-Land; <http://gmao.gsfc.nasa.gov/research/merra/merra-land.php>). Similarly, we have produced ERA-Interim/Land, a new global land surface data set associated with the ERA-Interim reanalysis, by incorporating recent land model developments at ECMWF combined with precipitation bias corrections based on GPCP v2.1. Albergel et al. (2013) have already shown the value of an ERA-Interim/Land variant (with no precipitation readjustment) together with other model-based and remote sensing data sets for the detection of soil moisture climate trends in the past 30 years.

To produce ERA-Interim/Land, near-surface meteorological fields from ERA-Interim were used to force the latest version of the HTESSSEL land surface model (Hydrology-Tiled ECMWF Scheme for Surface Exchanges over Land). This scheme is an extension of the TESSEL scheme (van den Hurk et al., 2000) used in ERA-Interim, which was based on the 2006 version of ECMWF's operational Integrated Forecasting System (IFS). HTESSSEL includes an improved soil hydrology (Balsamo et al., 2009), a new snow scheme (Dutra et al., 2010), a multiyear satellite-based vegetation climatology (Boussetta et al., 2013a), and a revised bare soil evaporation (Balsamo et al., 2011; Albergel et al., 2012a). The majority of improvements in ERA-Interim/Land in the Northern Hemisphere can be attributed to land parameterization revisions, while the precipitation correction is important in the tropics and the Southern Hemisphere.

The purpose of this paper is to document ERA-Interim/Land and its added value from ECMWF's perspective. This will be done by providing some limited verification and diagnostics comparing ERA-Interim/Land and ERA-Interim with the purpose of explaining what is the origin of the differences. A very basic question is how can offline assimilation have added value, because in its current form it does not include data assimilation of soil moisture and snow? Alternatively one could ask: would it have been beneficial to have no soil moisture and snow assimilation in ERA-Interim? The answer is non-trivial, but it is known that in a coupled system, data assimilation for soil moisture is a necessity; otherwise precipitation can "run away" through a

positive precipitation/evaporation feedback at the continental scale (Viterbo and Betts, 1999; Beljaars et al., 1996). The soil moisture increments keep precipitation under control and tend to be beneficial for fluxes, but not always for soil moisture (Drusch and Viterbo, 2007). An offline land simulation produced after the coupled reanalysis has the advantage that there is no positive feedback because precipitation is prescribed and the surface water budget is closed as there are no soil moisture increments. The problems with snow reanalysis are mainly related to observations; snow gauges can have large biases, and the simple analysis scheme used in ERA-Interim occasionally results in a negative impact of the assimilated observations.

The next section describes the various data sets used for production and verification of ERA-Interim/Land. Section 3 describes the offline land surface model integrations. Section 4 presents the main results on verification of land surface fluxes, soil moisture, snow, and surface albedo. The land surface estimates from ERA-Interim/Land are a preferred choice for initializing ECMWF's seasonal forecasting system (System-4; Molteni et al., 2011), as well as the monthly forecasting system (Vitart et al., 2008), since both systems make use of the ERA-Interim/Land scheme. A summary and recommendations for the usage of the ERA-Interim/Land product are reported in the conclusions.

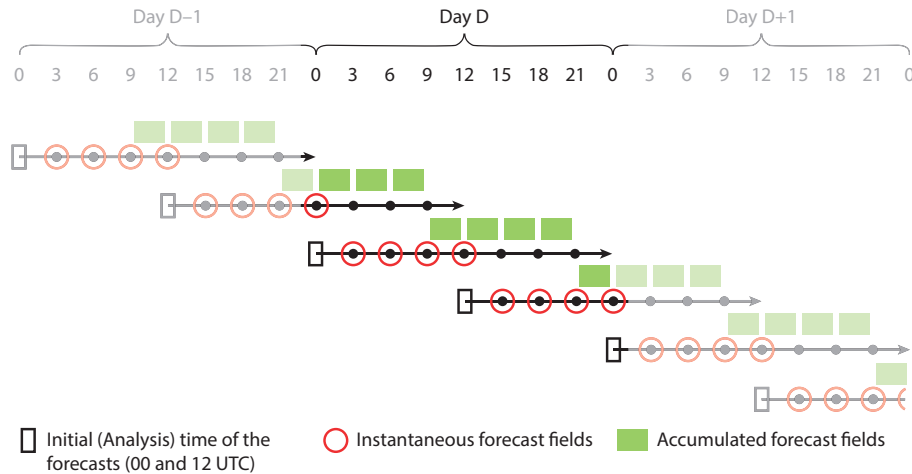
## 2 Data set and methods

The experimental set-up makes use of offline (or stand-alone) land simulations, which represent a convenient framework for isolating benefits and deficiencies of different land surface parameterizations (Polcher et al., 1998). In addition, given the complexity of the coupling with the atmosphere, offline simulations are much more cost-effective (faster) to run than a coupled atmosphere–land assimilation system.

In this study, offline runs are performed both at the global and point scales. All the 3-hourly meteorological forcing parameters were linearly interpolated in time to the land surface model integration time step of 30 min. The land-use information has been derived from the United States Geophysical Survey–Global Land Cover Classification (USGS–GLCC) and the United Nations–Food and Agriculture Organization (UN–FAO) data set at the same resolution as the forcing data. A comprehensive description of the land surface model and the ancillary data sets is given in the IFS documentation (2012, Part IV, Chapters 8 and 11; <http://www.ecmwf.int/research/ifsdocs/CY37r2/index.html>).

### 2.1 Validation and supporting data sets

The quality of ERA-Interim/Land relies on (i) the accuracy of the ERA-Interim forcing, (ii) bias correction of precipitation with the GPCP v2.1 data, and (iii) the realism of the land surface model. Its accuracy can be documented by veri-



**Figure 1.** Schematic representation of the ERA-Interim meteorological forecasts concatenation for the creation of the 3-hourly forcing time series used in ERA-Interim/Land for a given day. Orange circles indicate instantaneous variables valid at their time stamp: 10 m temperature, humidity, wind speed, and surface pressure. Green boxes indicate fluxes valid on the accumulation period: surface incoming short-wave and long-wave radiation, rainfall, and snowfall.

fication with independent data e.g. surface fluxes, runoff, and soil temperature/moisture. In the following, the data sets entering the ERA-Interim/Land generation and its verification are briefly presented.

### 2.1.1 ERA-Interim meteorological reanalysis

ERA-Interim (Dee et al., 2011) is produced at T255 spectral resolution (about 80 km) and covers the period from January 1979 to present, with product updates at approximately 1 month delay from real-time. The ERA-Interim atmospheric reanalysis is built upon a consistent assimilation of an extensive set of observations (typically tens of millions daily) distributed worldwide (from satellite remote sensing, in situ, radio sounding, profilers, etc.). The analysis step combines the observations with a prior estimate of the atmospheric state produced with a global forecast model in a statistically optimal manner. In ERA-Interim two analyses per day are performed at 00:00 and 12:00 UTC (universal time coordinated), which serve as initial conditions for the subsequent forecasts. As a result of the data assimilation, the short-range forecasts (first-guess fields) stay close to the real atmosphere and the 12-hourly adjustments due to observations remain small. This justifies the use of a concatenation of short-range forecasts for forcing the offline land surface reanalysis. The forecasts have the advantage of being available every 3 h and they also provide estimates of precipitation and radiation. Experience with ERA-Interim has shown that the estimates of wind, temperature and moisture (at the lowest model level), which are well-constrained by observations, are generally of high quality in the 0–12 h forecast range and show only very small jumps from one 12 h cycle to the next (see Simmons et al., 2010, for a comparison of reanalysis temperature estimates with observations). Estimates of precipitation and ra-

diation, however, although indirectly constrained by temperature and humidity observations, are generated by the forecast model and are therefore subject to a small but systematic spin-up during the first few hours of the forecasts (Kållberg, 2011). Therefore, the 9–21 h forecast range is used for the fluxes co-located in time with the other fields as illustrated in Fig. 1.

### 2.1.2 GPCP v2.1 precipitation

The monthly GPCP data set merges satellite and rain gauge data from a number of satellite sources including the global precipitation index, the outgoing long-wave radiation precipitation index (OPI), the Special Sensor Microwave/Imager (SSM/I) emission, the SSM/I scattering, and the TIROS Operational Vertical Sounder (TOVS). In addition, rain gauge data from the combination of the Global Historical Climate Network (GHCN) and the Climate Anomaly Monitoring System (CAMS), as well as the Global Precipitation Climatology Centre (GPCC) data set, which consists of approximately 6700 quality controlled stations around the globe interpolated into monthly area averages, are used over land. Adler et al. (2003) detail the data sets and methods used to merge these data.

Compared to earlier releases, version 2.1 of GPCP used in this study takes advantage of the improved GPCC gauge analysis and the usage of the OPI estimates for the new SSM/I era. Thus, the main differences between the two versions are the result of the use of the new GPCC full data reanalysis (version 4) for 1997–2007, the new GPCC monitoring Product (version 2) thereafter, and the recalibration of the OPI data to a longer 20-year record of the new SSM/I-era GPCP data. Further details on the new version can be found in Huffman et al. (2009).

**Table 1.** List of flux tower sites used for the verification. The listed biome types are deciduous broadleaf forest (DBF), evergreen broadleaf forest (EBF), deciduous needle-leaf forest (DNF), evergreen needle-leaf forest (ENF), mixed forest (MF), woody savannahs (WSA), grasslands (GRA), crops (CRO), and wetlands (WET).

<i>N</i>	Site	Lat.	Long.	Veg. type	<i>N</i>	Site	Lat.	Long.	Veg. type
1	sk-oa	53.63	−106.20	DBF	18	it-ro2	42.39	11.92	DBF
2	sk-obs	53.99	−105.12	ENF/WET	19	nl-ca1	51.97	4.93	GRA
3	brasilia	−15.93	−47.92	WSA/GRA/SH	20	nl-haa	52.00	4.81	GRA
4	at-neu	47.12	11.32	GRA	21	nl-hor	52.03	5.07	GRA
5	ca-mer	45.41	−75.52	WET	22	nl-loo	52.17	5.74	ENF
6	ca-qfo	49.69	−74.34	ENF	23	ru-fyo	56.46	32.92	ENF
7	ca-sf1	54.49	−105.82	ENF	24	ru-ha1	54.73	90.00	GRA
8	ca-sf2	54.25	−105.88	ENF	25	ru-ha3	54.70	89.08	GRA
9	ch-oe1	47.29	7.73	GRA	26	se-sk2	60.13	17.84	ENF
10	fi-hyy	61.85	24.29	ENF	27	us-arm	36.61	−97.49	CRO
11	fr-hes	48.67	7.06	DBF	28	us-bar	44.06	−71.29	DBF
12	fr-lbr	44.72	−0.77	ENF	29	us-ha1	42.54	−72.17	DBF
13	il-yat	31.34	35.05	ENF	30	us-mms	39.32	−86.41	DBF
14	it-amp	41.90	13.61	GRA	31	us-syv	46.24	−89.35	MF
15	it-cpz	41.71	12.38	EBF	32	us-ton	38.43	−120.97	MF/WSA
16	it-mbo	46.02	11.05	GRA	33	us-var	38.41	−120.95	GRA
17	it-ro1	42.41	11.93	DBF	34	us-wtr	45.81	−90.08	DBF

The motivation for rescaling ERA-Interim precipitation estimates using GPCP data is to combine the best aspects of both data sets. ERA-Interim precipitation shows excellent synoptic variability but can be biased. Bias adjustments based on GPCP add the constraint of observations on a monthly timescale e.g. through the calibration of GPCP with SYNOP (synoptic) gauges. Balsamo et al. (2010a) evaluate ERA-Interim precipitation before and after rescaling with independent high-resolution data over the US. They conclude that in the extratropics, ERA-Interim is already close to GPCP in terms of performance, but that the monthly bias correction with GPCP gives an improvement. Much less is known about the tropics and areas with snow. Errors in ERA-Interim precipitation are much larger in the tropics (Betts et al., 2009; Agusti-Panareda et al., 2010) than in the extratropics and benefit from bias correction with GPCP is expected to be substantial. Runoff verification results shown below provide indirect evidence for this conclusion. For snowfall, Brun et al. (2013) conclude, on the basis of snow accumulation verification, that the quality of ERA-Interim is excellent and exceeds those based on gauge observations, which tend to suffer from substantial undercatch. The impact of GPCP bias correction on snowfall is fairly small.

### 2.1.3 FLUXNET land energy fluxes

FLUXNET is a global surface energy, water, and CO<sub>2</sub> flux observation network and consists of a collection of regional networks (Baldocchi et al., 2001; <http://fluxnet.ornl.gov>). Additionally, observational data for the year 2006 from the Boreal Ecosystem Research and Monitoring Sites (BERMS;

Betts et al., 2006), and the Coordinated Energy and water cycle Observations Project (CEOP) were used in this study.

The FLUXNET observations are part of the La Thuile data set, which provides flux tower measurements of latent heat flux (LE), sensible heat flux ( $H$ ) and net ecosystem exchange (NEE) at high temporal resolution (30–60 min). For verification purposes, hourly observations from the year 2004 were selected from the original observational archive (excluding gap filled values) with a high-quality flag only (see Table 1).

As part of the CEOP program, reference site observations from the Amazonian region also belonging to the LBA experiments (the Large Scale Biosphere–Atmosphere Experiment in Amazonia) are available for scientific use. In this study, observations are taken from flux towers located within a woody savannah region (Brasilia).

### 2.1.4 ISMN soil moisture observing network

In situ soil moisture observations are extremely useful for the evaluation of modelled soil moisture. In recent years, huge efforts were made to collect observations representing contrasting biomes and climate conditions. Some of them are now freely available such as data from The International Soil Moisture Network (ISMN; Dorigo et al., 2011, 2013, <http://ismn.geo.tuwien.ac.at/>). The ISMN is a new data-hosting centre where globally available ground-based soil moisture measurements are collected, harmonized and made available to users. This includes a collection of nearly 1000 stations (with data from 2007 up to present) gathered and quality controlled at ECMWF. Albergel et al. (2012a, b, c) have used these data to validate various soil moisture estimates

**Table 2.** Comparison of surface soil moisture with in situ observations for ERA-Interim/Land (bold) and ERA-Interim (normal font) in 2010: mean correlation ( $R$ ), bias (observation minus ERA), root mean square error (RMSE), and normalized standard deviation ( $NSD = SD_{\text{model}}/SD_{\text{obs}}$ ). Scores are given for significant correlations with  $p$  values  $< 0.05$ . For each  $R$  estimate a 95 % confidence interval (CI) was calculated using a Fisher Z transform.

Network ( $N$ stations with significant $R$ )	$R$ (95 % CI)	Bias ( $\text{m}^3 \text{m}^{-3}$ )	RMSE ( $\text{m}^3 \text{m}^{-3}$ )	NSD = $\sigma_{\text{model}}/\sigma_{\text{obs}}$
AMMA, W. Africa (3) Pellarin et al. (2009)	<b>0.63</b> ( $\pm 0.06$ ) 0.61 ( $\pm 0.07$ )	<b>-0.060</b> -0.153	<b>0.082</b> 0.154	<b>2.67</b> 0.69
OZNET, Australia (36) Smith et al. (2012)	<b>0.79</b> ( $\pm 0.05$ ) 0.78 ( $\pm 0.05$ )	<b>-0.112</b> -0.078	<b>0.131</b> 0.106	<b>1.01</b> 0.55
SMOSMANIA, France (12) Albergel et al. (2008)	<b>0.83</b> ( $\pm 0.04$ ) 0.82 ( $\pm 0.05$ )	<b>-0.080</b> -0.037	<b>0.108</b> 0.099	<b>0.83</b> 0.41
REMEDHUS, Spain (17) Ceballos et al. (2005)	<b>0.76</b> ( $\pm 0.04$ ) 0.79 ( $\pm 0.04$ )	<b>-0.152</b> -0.110	<b>0.175</b> 0.135	<b>1.57</b> 0.84
SCAN, US (119) Schaefer and Paetzold (2001)	<b>0.64</b> ( $\pm 0.07$ ) 0.62 ( $\pm 0.07$ )	<b>-0.078</b> -0.063	<b>0.130</b> 0.110	<b>0.95</b> 0.54
SNOTEL, US (193) Schaefer and Paetzold (2001)	<b>0.62</b> ( $\pm 0.10$ ) 0.69 ( $\pm 0.08$ )	<b>-0.045</b> -0.088	<b>0.115</b> 0.123	<b>0.78</b> 0.44

produced at ECMWF, including from ERA-Interim as well as from offline land simulations. Data from six networks are considered for 2010: NRCS-SCAN (Natural Resources Conservation Service–Soil Climate Analysis Network) and SNOTEL (SNOWpack TELemetry) over the United States, with 177 and 348 stations, respectively; SMOSMANIA (Soil Moisture Observing System–Meteorological Automatic Network Integrated Application) with 12 stations in France; REMEDHUS (RED de MEDición de la HUmidad del Suelo) in Spain with 20 stations, the Australian hydrological observing network labelled OZNET with 38 stations; and AMMA (African Monsoon Multidisciplinary Analyses) in western Africa with 3 stations. Data at 5 cm and the year 2010 are used for the comparison because it is the depth and year for which most of the stations have observations (Table 2 includes references for different networks).

### 2.1.5 The GTS-SYNOP observing network

The GTS-SYNOP (Global Telecommunications System–surface SYNOptic observation) is an operationally maintained data set under coordination of the World Meteorological Organization (WMO), which provides daily ground-based observations of the main weather parameters and selected land surface quantities, such as snow depth, at a large number of sites worldwide. The snow data are acquired at a minimum frequency of once a day and represent the only quantitative snow-depth measurements in contrast to remote sensing observations, which have limited information on snow depth. These data are operationally used at ECMWF

for the daily global snow analysis as described in Drusch et al. (2004) and de Rosnay et al. (2014).

### 2.1.6 Satellite surface albedo

The Moderate Resolution Imaging Spectroradiometer (MODIS) albedo product MCD43C3 provided data describing both directional hemispheric reflectance (black-sky albedo) and bihemispherical reflectance (white-sky albedo) in seven different bands and aggregated bands. Data from the Terra and Aqua platforms are merged in the generation of the product that is produced every 8 days on a  $0.05^\circ$  global grid. The accuracy and quality of the product has been studied by several authors (e.g. Román et al., 2009; Salomon et al., 2006). The MODIS product has served as a reference for model validation (e.g. Dutra et al., 2010, 2012; Wang and Zeng, 2010; Zhou et al., 2003). In this study, we compare the white-sky broadband short-wave albedo (2000–2010) with ERA-Interim and ERA-Interim/Land. MODIS albedo was averaged for each month and spatially aggregated to the model grid.

### 2.1.7 The GRDC river discharge data set

The Global Runoff Data Centre (GRDC) operates under the auspice of the World Meteorological Organization and provides data for verification of atmospheric and hydrologic models. The GRDC database is updated continuously and contains daily and monthly discharge data information for over 3000 hydrologic stations in river basins located in 143 countries. Over the GSWP-2 period, the runoff data of

1352 discharge gauging stations was available and used for verification of the soil hydrology (Balsamo et al., 2009). Pappenberger et al. (2009) and Balsamo et al. (2010b) used the GRDC discharge to evaluate a coupled land surface–river discharge scheme for river flood prediction.

## 2.2 Land modelling component

ERA-Interim/Land differs from the land component of ERA-Interim in a number of parameterization improvements introduced in the operational ECMWF forecast model since 2006, when the ERA-Interim reanalysis started. The meteorological forcing described in Sect. 2.1.1 is used to drive an 11 year spin-up run (1979–1989). The average of the 11 “1 Januarys” is taken as a plausible initial condition for 1 January 1979.

A single continuous 32-year simulation starting on 1 January 1979 is then realized with the latest ECMWF land surface scheme. The modelling components that were updated with respect to ERA-Interim are briefly described in the following subsections with emphasis on those changes that have an impact on ERA-Interim/Land performance.

### 2.2.1 Soil hydrology

A revised soil hydrology in TESSEL was proposed by van den Hurk and Viterbo (2003) for the Baltic Basin. These model developments were in response to known weaknesses of the TESSEL hydrology: specifically, the choice of a single global soil texture, which does not characterize different soil moisture regimes, and a Hortonian runoff scheme which produces hardly any surface runoff. Therefore, a revised formulation of the soil hydrological conductivity and diffusivity (spatially variable according to a global soil texture map) and surface runoff (based on the variable infiltration capacity approach) were operationally introduced in IFS in November 2007. Balsamo et al. (2009) verified the impact of the soil hydrological revisions from field site to global, atmospheric coupled experiments and in data assimilation.

### 2.2.2 Snow hydrology

A fully revised snow scheme was introduced in 2009 to replace the existing scheme based on Douville et al. (1995). The snow density formulation was changed and liquid water storage in the snowpack was introduced, which also allows for the interception of rainfall. On the radiative side, the snow albedo and the snow cover fraction have been revised and the forest albedo in presence of snow has been retuned based on MODIS satellite estimates. A detailed description of the new snow scheme and verification from field site experiments to global offline simulations are presented in Dutra et al. (2010). The results showed an improved evolution of the simulated snowpack with positive effects on the timing of runoff and terrestrial water storage variation and a better match of the albedo to satellite products.

### 2.2.3 Vegetation seasonality

The leaf area index (LAI), which expresses the phenological phase of vegetation (growing, mature, senescent, dormant), was kept constant in ERA-Interim and assigned by a lookup table depending on the vegetation type; thus, vegetation appeared to be fully developed throughout the year. To allow for seasonality, a LAI monthly climatology based on a MODIS satellite product was implemented in IFS in November 2010. The detailed description of the LAI monthly climatology and its evaluation is provided in Boussetta et al. (2013a).

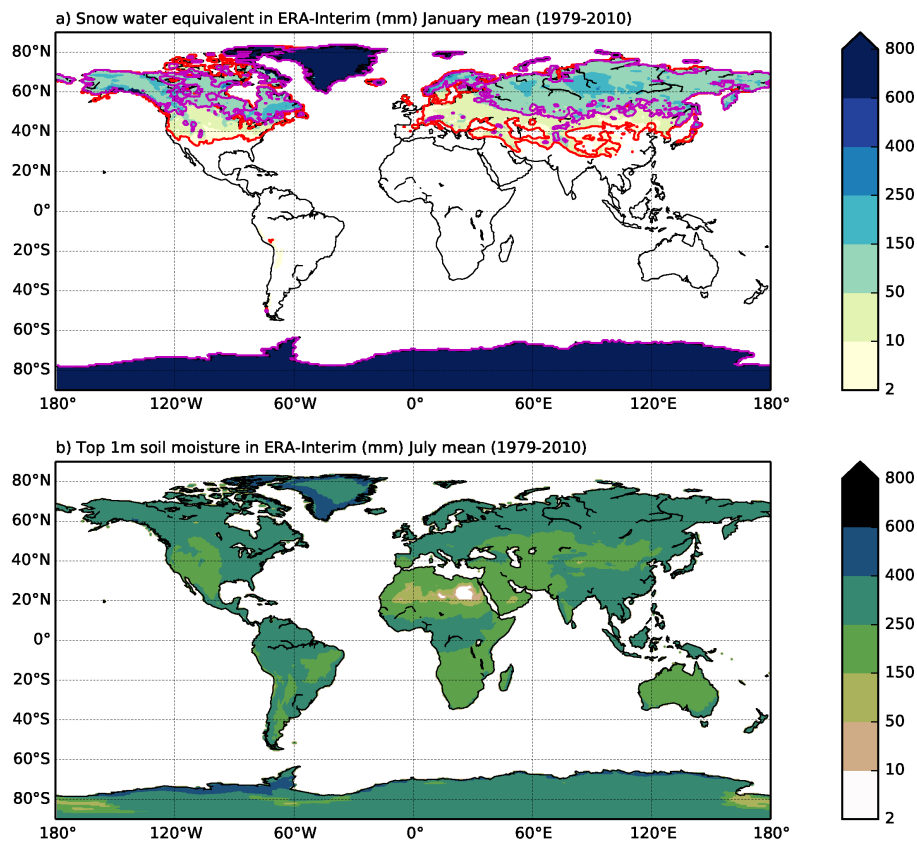
### 2.2.4 Bare soil evaporation

In ERA-Interim, the bare ground evaporation is based on the same stress function as for vegetation. The result is that evaporation is not possible for soil moisture contents below the permanent wilting point. This has been improved by adopting a lower stress threshold for bare soil (Balsamo et al., 2011) which is in agreement with previous experimental findings (e.g. Mahfouf and Noilhan, 1991) and results in more realistic soil moisture for dry lands. The new bare soil evaporation in conjunction with the LAI update as reported in Balsamo et al. (2011) has been extensively evaluated by Albergel et al. (2012a) over the US. The evaluation was based on data from the Soil Climate Analysis Network (SCAN) as well as Soil Moisture and Ocean Salinity (SMOS) satellite data.

## 3 Results

The quality of ERA-Interim/Land builds upon reduced errors in the meteorological forcing and improved land surface modelling. In the following, selected verification results are illustrating the skill of ERA-Interim/Land in reproducing the main land water reservoirs and fluxes towards the atmosphere and river outlets. The two most active water reservoirs are the root-zone soil moisture (here the top 1 m of soil is considered) and the snow accumulated on the ground. These global reservoirs in its median of the distribution calculated over the period 1979–2010 are shown in Figs. 2 and 3 for ERA-Interim and ERA-Interim/Land, respectively. The median of soil moisture (SM) and snow water equivalent (SWE) are both expressed in millimetres of water or equivalently in kilograms per square metre. The medians over the 32-year SM and SWE are based on 11 daily values centred around 15 January and 15 July for 32 years, resulting in 352 samples. The median is of particular interest to illustrate the snow and soil moisture global climatology maps because it indicates “typical” values and a single exceptional year would leave the median invariant. The same argument is valid for mid-July SM in which a single exceptional flood will not affect the median.

Clear differences can be seen between ERA-Interim and ERA-Interim/Land in both January snow amount and July soil moisture (compare Figs. 2 and 3). The differences in



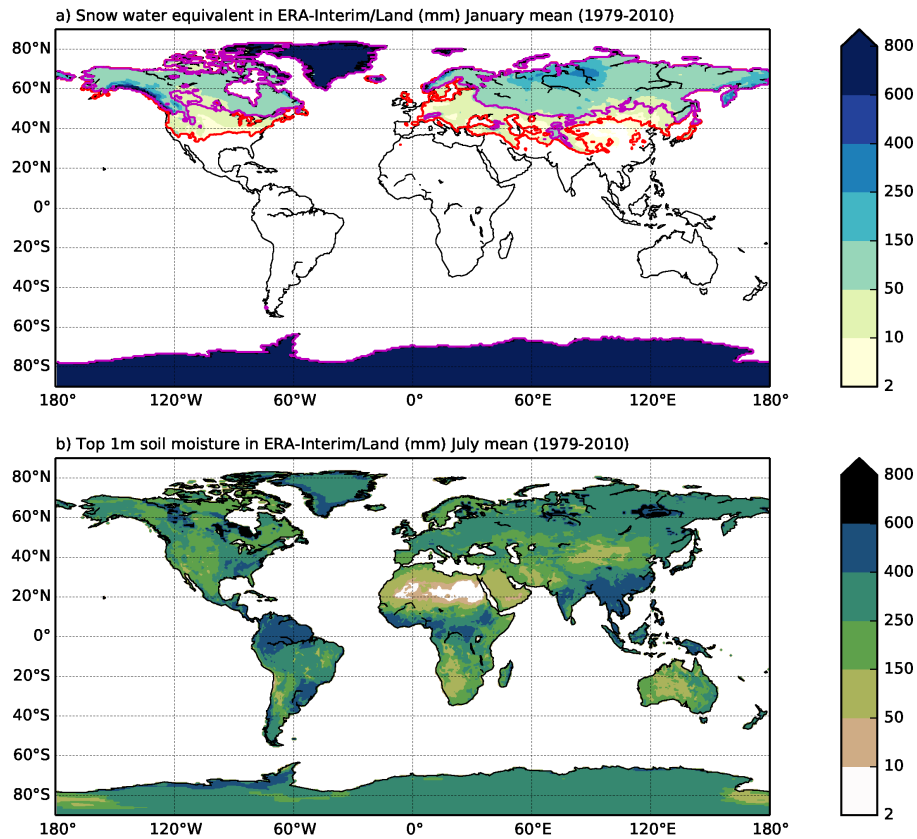
**Figure 2.** Median of the land water reservoirs in the 1979–2010 period for ERA-Interim: (a) snow water equivalent (SWE,  $\text{kg m}^{-2}$ ) for the 10–20 January period, and (b) top 1 m soil moisture (TCSM,  $\text{kg m}^{-2}$ ) for the 10–20 July period. The red and magenta contours in (a) indicate the 5th and 95th percentiles, respectively, of  $10 \text{ kg m}^{-2}$  snow water equivalent as an indication of the year to year variability of snow cover.

snow amount are due to (i) the GPCP bias correction of precipitation forcing, (ii) improved snowmelt, density and albedo in the land surface model, and (iii) the lack of data assimilation of snow depth in ERA-Interim/Land. The GPCP correction results in a slightly reduced snowfall, and the changes in the snow model lead predominantly to differences in the marginal snow areas and seasonal differences. The main difference comes from the data assimilation method used in ERA-Interim. It uses a Cressman (1959) scheme for the assimilation of SYNOP observations, which has documented deficiencies in areas with sparse observations, and strong relaxation to climatology before 2003. After 2003, qualitative information from a snow cover product is used instead of climatology (Drusch et al., 2004). In particular, the use in ERA-Interim of climatology before 2003 and the poor handling of sparse observations with the Cressman scheme make ERA-Interim/Land (which relies on forcing and the model only) more suitable for studies of interannual variability and extremes. From Figs. 2a and 3a, it can be seen that snow mass has more variability in ERA-Interim than in ERA-Interim/Land. This is the result of the Cressman analysis of SYNOP data, particularly in areas with low-density observations. To illustrate the dynamical range of the distri-

bution and the capability of reanalysis to reproduce anomalies, the 5th and 95th percentiles of the  $10 \text{ kg m}^{-2}$  contour is also plotted in Figs. 2a and 3a. As expected there is a large distance between the 5th and 95th percentiles, indicating a lot of interannual variability in the snow line.

The summer soil moisture also shows large differences between ERA-Interim and ERA-Interim/Land. As can be seen from Figs. 2b and 3b, soil moisture tends to be lower in ERA-Interim/Land. This is mainly the result of the modified soil hydrology properties which increases the effective size of the soil moisture reservoir, permits a larger amplitude of the seasonal cycle, and allows soil moisture to go lower in summer. Data assimilation in ERA-Interim also tends to reduce the seasonal cycle by adding water in summer (Drusch and Viterbo, 2007). ERA-Interim/Land shows more spatial variability than ERA-Interim. This is the result of the spatial variability of soil properties, which ERA-Interim does not have, and the reformulation of the bare soil evaporation.

The evolution of ERA-Interim/Land along a 10-year period of this data set and its differences with respect to ERA-Interim are illustrated in Figs. 4 and 5 for both soil moisture and snow water equivalent. The stability and the differences with respect to ERA-Interim can be appreciated in Figs. 4a



**Figure 3.** Same as Fig. 2, but for ERA-Interim/Land.

and 5a for snow water equivalent and in Figs. 4b and 5b for the top 1 m soil moisture. The snow changes in Fig. 5a are mainly a consequence of the new snow scheme and highlight both a snow mass increase at high latitudes and a slight reduction at midlatitudes. There is also a phase shift in the seasonal cycle at midlatitudes with less snow during accumulation and more snow in the melting season. The soil moisture presents large differences in Fig. 5b, which can be attributed to the soil hydrology revisions. Figure 5 is meant to illustrate that ERA-Interim and ERA-Interim/Land are significantly different with respect to land water resources. In these runs, observational constraints on the snow and soil water reservoirs, such as those applied by the screen-level data assimilation, are totally absent. However, the resulting water reservoirs of snow and soil moisture and the river discharges are shown to improve with respect to the original ERA-Interim data, without deteriorating the turbulent fluxes to the atmosphere. In the following sections, a selection of results is presented to demonstrate the added value of ERA-Interim/Land.

### 3.1 Land flux verification

In the following subsections, fluxes from the offline-driven land simulations are validated against two observation cat-

egories: the land-to-atmosphere turbulent heat and moisture fluxes and the river discharges.

#### 3.1.1 Latent and sensible heat flux

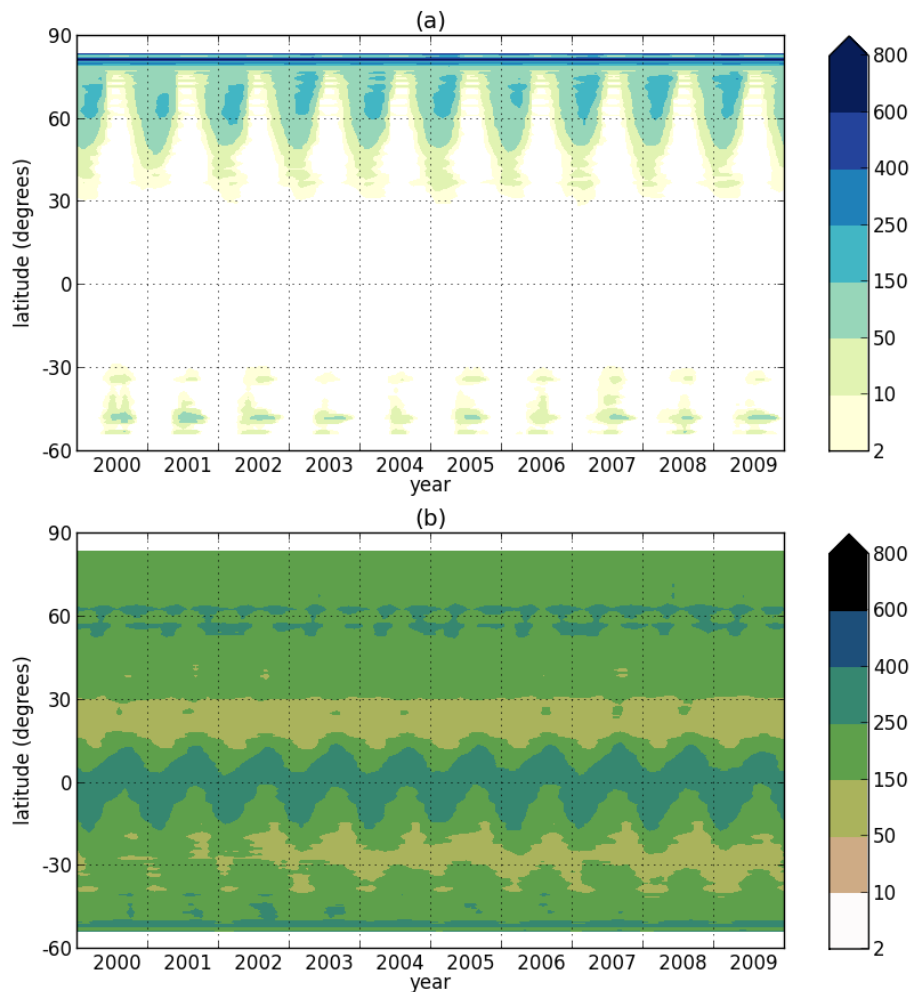
Fluxes from 34 FLUXNET, CEOP and BERMS flux towers, as listed in Table 1, are used for verification in 2004. Correlation, mean bias and root mean squared errors are computed based on 10-day averages, so the verification is focusing on the seasonal and subseasonal timescales. Figure 6 shows the RMSEs of sensible and latent heat flux for the individual flux towers. The RMSEs of sensible heat flux are of the order of  $20 \text{ W m}^{-2}$ , which is typical for point verification. The errors of latent heat flux are larger and vary from station to station. Positive and negative differences are seen in Fig. 6, and it is difficult to draw firm conclusions on the relative merit of ERA-Interim/Land compared to ERA-Interim. A major issue with point verification is that the station may not be representative of a large area. The vegetation cover around the station may also be different from the vegetation type as specified in the corresponding model grid box. The latter is probably the case for stations that show atypically large errors.

An overall quantitative estimate of the errors is reported in Table 3. Latent and sensible heat fluxes have RMSEs of  $21.8 (\pm 0.9)$  and  $21.3 (\pm 0.9) \text{ W m}^{-2}$  with ERA-Interim/Land



**Table 3.** Summary of mean latent heat flux (LE) and sensible heat flux ( $H$ ) statistics averaged over the 34 sites (units:  $\text{W m}^{-2}$ ). The CI of RMSE is based on the Chi-squared distribution. The  $R$  of model fluxes to observations include a 95 % CI calculated using a Fisher  $Z$  transform.

Model	LE RMSE	LE Bias	LE $R$	$H$ RMSE	$H$ Bias	$H$ $R$
ERA-Interim/Land	21.8 ( $\pm 0.9$ )	14.4	0.85 ( $\pm 0.02$ )	21.3 ( $\pm 0.9$ )	-2.6	0.83 ( $\pm 0.02$ )
ERA-Interim	26.0 ( $\pm 1.0$ )	18.2	0.83 ( $\pm 0.02$ )	19.6 ( $\pm 0.8$ )	-3.8	0.85 ( $\pm 0.02$ )

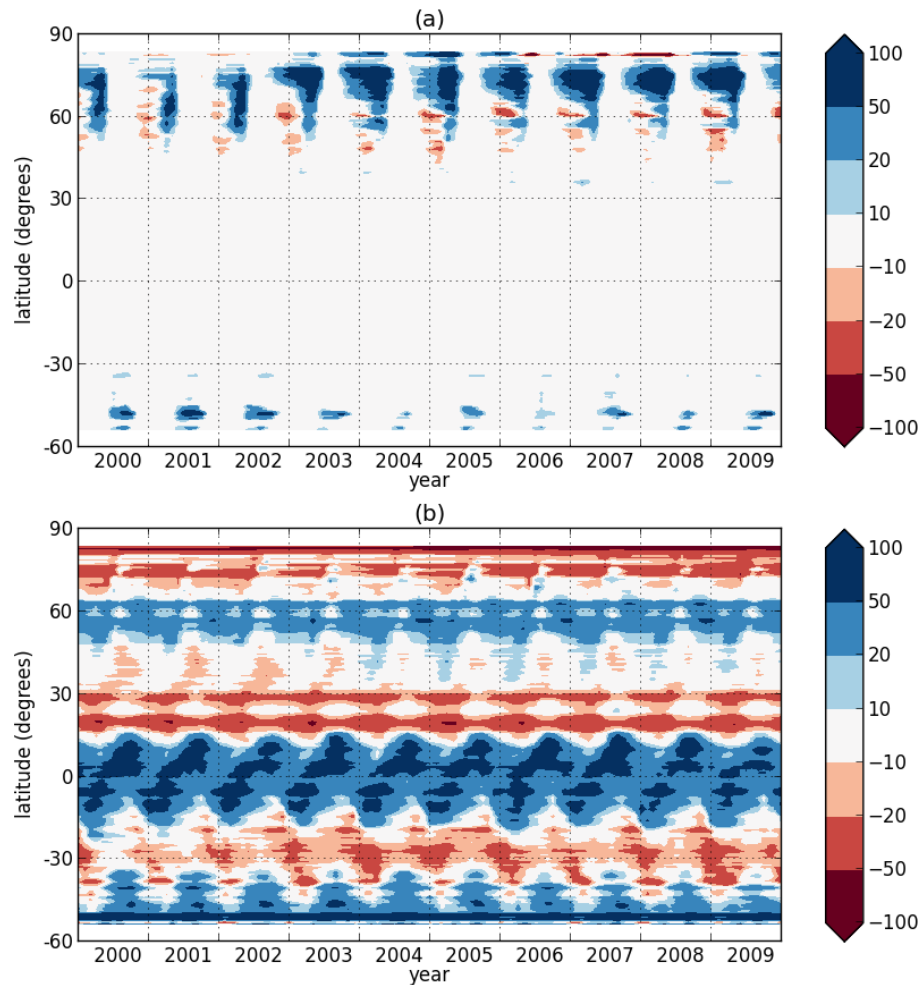


**Figure 4.** ERA-Interim Hovmöller diagram of the land water reservoirs (zonally averaged over land) for the 2001–2010 period: (a) SWE ( $\text{kg m}^{-2}$ ) and (b) TCSM ( $\text{kg m}^{-2}$ ).

and  $26.0 (\pm 1.1)$  and  $19.6 (\pm 0.8) \text{ W m}^{-2}$  with ERA-Interim. Correlation is fairly high and typically 0.85. It can be concluded that, given the uncertainty estimates, the latent heat fluxes are better with ERA-Interim/Land, but the impact on sensible heat flux is not significant.

Prior to production, preliminary experimentation was performed with intermediate versions towards ERA-Interim/Land: (i) offline with the TESSEL model (which indicates the impact of land data assimilation in ERA-Interim),

and (ii) offline with HTESSEL but no GPCP corrections (which indicates the effect of the model changes). It turns out that the RMSEs of latent flux are  $26.0 \text{ W m}^{-2}$  with ERA-Interim,  $30.4 \text{ W m}^{-2}$  with version (i),  $25.1 \text{ W m}^{-2}$  with version (ii), and  $21.8 \text{ W m}^{-2}$  with ERA-Interim/Land. All these versions are significantly different on the basis of a typical uncertainty of  $1 \text{ W m}^{-2}$ . Deleting the data assimilation increases the error from  $26.0$  to  $30.4 \text{ W m}^{-2}$ , changing the model reduces the error from  $30.4$  to  $25.1$ , and applying



**Figure 5.** As Fig. 4, but for the difference between ERA-Interim/Land and ERA-Interim in (a) SWE ( $\text{kg m}^{-2}$ ) and (b) TCSM ( $\text{kg m}^{-2}$ ).

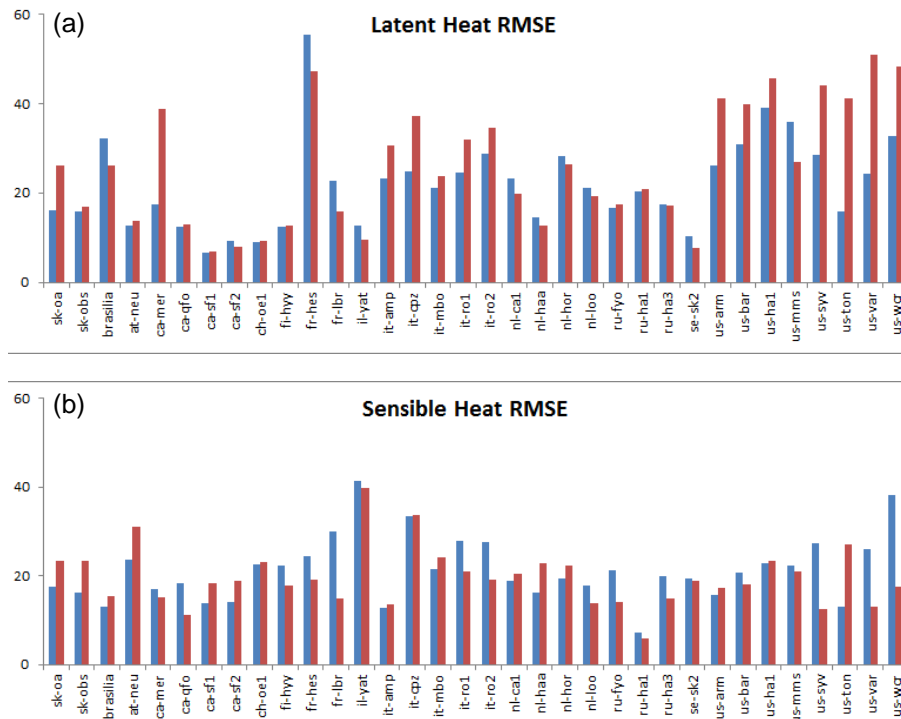
GPCP bias correction reduces the error further from 25.1 to  $21.8 \text{ W m}^{-2}$ . It is not surprising that soil moisture data assimilation with SYNOP observations is beneficial, because this type of indirect data assimilation reduces the atmospheric errors by construction through soil moisture increments. So, in ERA-Interim/Land relative to ERA-Interim, the lack of soil moisture data assimilation and the model improvement compensate each other in the flux tower verification. The GPCP bias correction contributes further to the improvement. Similar signals exist for sensible heat flux (not shown), except that for sensible heat flux the GPCP part is not significant.

### 3.1.2 River discharge

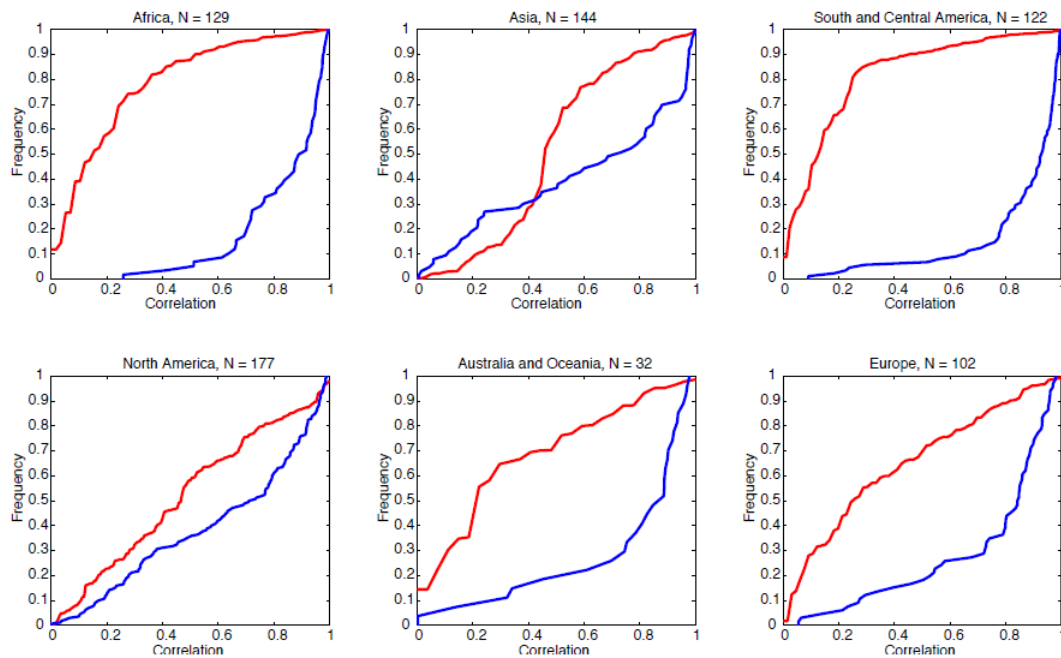
River discharge is used here to provide an integrated quantity of the continental water cycle for verifying improvements in the representation of land hydrology. For each discharge station, ERA-Interim and ERA-Interim/Land runoff are averaged over the corresponding catchment area and correlated with the observed monthly values covering the entire reanal-

ysis period. Then a PDF (probability density function) of the correlation coefficients is created by clustering over large areas. Figure 7 shows the cumulative distribution function of the correlations from ERA-Interim/Land (blue line) and ERA-Interim (red line). A general improvement is seen in ERA-Interim/Land, as the correlations are higher at all levels in nearly all cases (the blue line is nearly always to the right of the red line, indicating a higher frequency of high correlation).

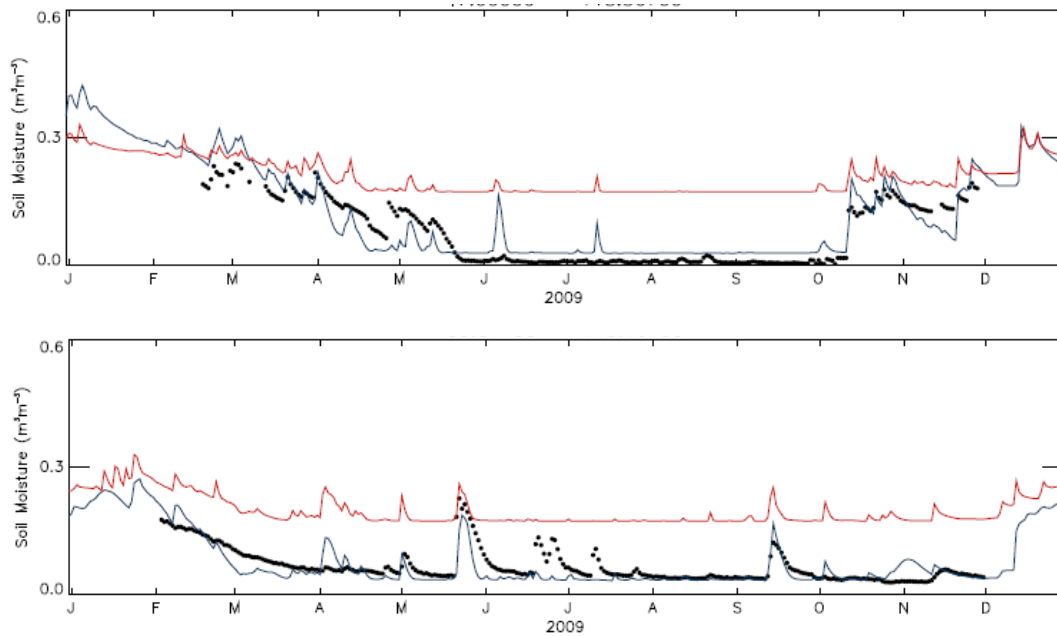
The improvements in runoff are large for two reasons: (i) the revised hydrology, i.e. soil infiltration, soil properties and runoff formulation, and (ii) the GPCP bias correction in the tropics and the Southern Hemisphere, consistent with what is known of ERA-Interim precipitation errors (e.g. Betts et al., 2009; Agustí-Panareda et al., 2010). Both effects can be seen in Fig. 7. The improvements over Asia, North America and Europe are mainly the result of the model changes, whereas the impact over Africa, South and Central America and Australia are much larger as the result of the additional effect of GPCP bias correction.



**Figure 6.** Root mean square error ( $W m^{-2}$ ) based on hourly values in 2004 for (a) latent heat flux and (b) sensible heat flux with respect to observations at 34 sites (as in Table 1) for ERA-Interim/Land (blue) and ERA-Interim (red).



**Figure 7.** Cumulative distribution function of river discharge correlations of ERA-Interim (red) and ERA-Interim/Land (blue) with GRDC data clustered by continents.



**Figure 8.** Evolution of volumetric soil moisture for the year 2009 at a site in Utah (latitude 47.000, longitude  $-118.567$ , top panel) and Washington (latitude 39.017, longitude  $-110.167$ , bottom panel). In situ observations are in black, ERA-Interim is in red, and ERA-Interim/Land estimates in blue.

Although there is still some way to go in effectively representing river discharge in large-scale land surface schemes, coupling such schemes to state-of-the-art river hydrology models can bring further improvement (Pappenberger et al., 2012). In the current evaluation it is particularly encouraging that the average improvement of river discharge correlations of ERA-Interim/Land over ERA-Interim occurs on all continents, which encompass different rivers and different water balance regimes.

### 3.2 Land water reservoir verification

The water reservoir verification aims at assessing the daily performance of ERA-Interim/Land in soil water content and the snow water equivalent, which are responding to the diurnal, synoptic and seasonal variations of fluxes. The deeper and slowly evolving soil moisture layers, such as the water table, are not considered in the present verification since they are not yet properly represented in the ECMWF model.

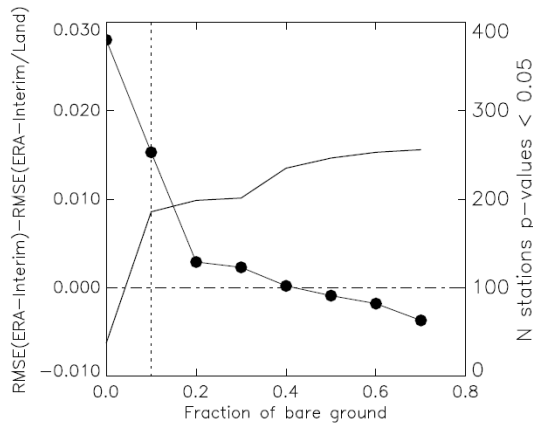
#### 3.2.1 Soil moisture

The changes in land surface parameterization have largely preserved the mean annual soil moisture, which ranges around  $0.23\text{--}0.24\text{ m}^3\text{ m}^{-3}$  as global land average over the ERA-Interim period. However, the spatial variability has greatly increased with the introduction of the revised soil hydrology (Balsamo et al., 2009). In order to verify the soil moisture produced by the offline simulations we make use of the ISMN ground-based observing networks. This has been

applied by Albergel et al. (2012b) to validate soil moisture from both ECMWF operational analysis and ERA-Interim.

Considering the field sites of the NRCS-SCAN network (covering the US) with a fraction of bare ground greater than 0.2 (according to the model), the RMSE of soil moisture decreases from  $0.118\text{ m}^3\text{ m}^{-3}$  with ERA-Interim to  $0.087\text{ m}^3\text{ m}^{-3}$  with ERA-Interim/Land, mainly due to the new formulation of bare soil evaporation. In the TESSEL formulation of ERA-Interim, minimum values of soil moisture are limited by the wilting point of the dominant vegetation type. However, ground data indicate much drier conditions, as is clearly observed at bare soil locations, e.g. at the Utah and Washington sites from May to September 2009 shown in Fig. 8. The new soil hydrology and bare ground evaporation allows the model to go below the wilting point, which is in much better agreement with the observations than in ERA-Interim.

The improved capability of ERA-Interim/Land to simulate soil moisture in bare soil areas is also clear in Fig. 9. It illustrates the gain in skill in reproducing the observed soil moisture in dry land as a function of vegetation cover. With the RMSE being positive, definite, and calculated against in situ soil moisture observations, the RMSE differences between ERA-Interim and ERA-Interim/Land indicate improvements realized by the latter. The RMSE difference is calculated for locations with varying vegetation fraction and the improvement is shown to be larger on points with sizeable bare soil. This is a demonstration that the enhanced match to the ob-



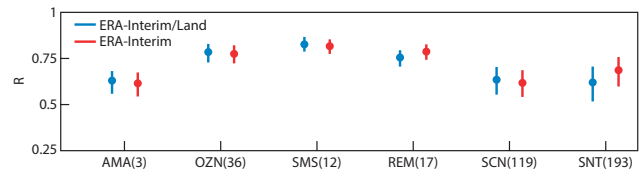
**Figure 9.** RMSE difference between ERA-Interim and ERA-Interim/Land (solid line, left y axis) as a function of the fraction of bare ground. The number of in situ stations (line with solid dots, right y axis) with significant correlations is also presented. Sensitivity to fraction of bare soil is only pronounced above the threshold indicated by the vertical dashed line.

served soil moisture is indeed the result of the bare soil evaporation revision as detailed in Albergel et al. (2012a).

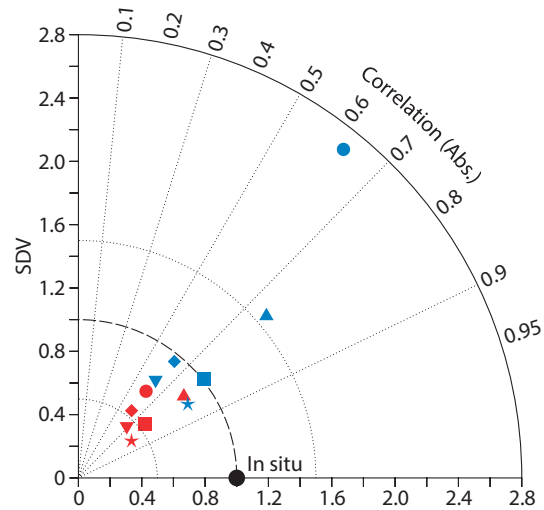
The correlation of ERA-Interim/Land soil moisture with the various observed soil moisture networks varies depending on the network (Fig. 10, Table 2). In general, the correlations are similar to those with ERA-Interim and not significantly improved. However, the variability is increased as can be seen in the Taylor diagram of Fig. 11. The distance to the point marked “in situ” has been reduced with ERA-Interim/Land, because the standard deviation of observations is better reproduced.

The site verification of soil moisture presented in this section, has also been applied to an offline experiment where the only difference is that ERA-Interim forcing is not corrected with GPCP. It turns out that the results are indistinguishable. It can be concluded that monthly GPCP bias correction has no impact on soil moisture in the extratropics, in spite of the small beneficial impact on precipitation as was seen by Balsamo et al. (2010a) over the US.

Interestingly, Albergel et al. (2013) verified an ERA-Interim/Land variant (with no precipitation readjustment) and MERRA-Land for the full 1988–2010 period with all available in situ soil moisture observations. They find average correlations for superficial soil moisture (95 % confidence interval) of 0.66 ( $\pm 0.038$ ) for ERA-Interim/Land, and 0.69 ( $\pm 0.038$ ) for MERRA-Land. Root zone soil moisture correlations of 0.68 ( $\pm 0.035$ ) are found for ERA-Interim/Land and 0.73 ( $\pm 0.032$ ) for MERRA-Land. It is impossible to speculate on the origin of the differences between these two reanalyses because they are different on many aspects.



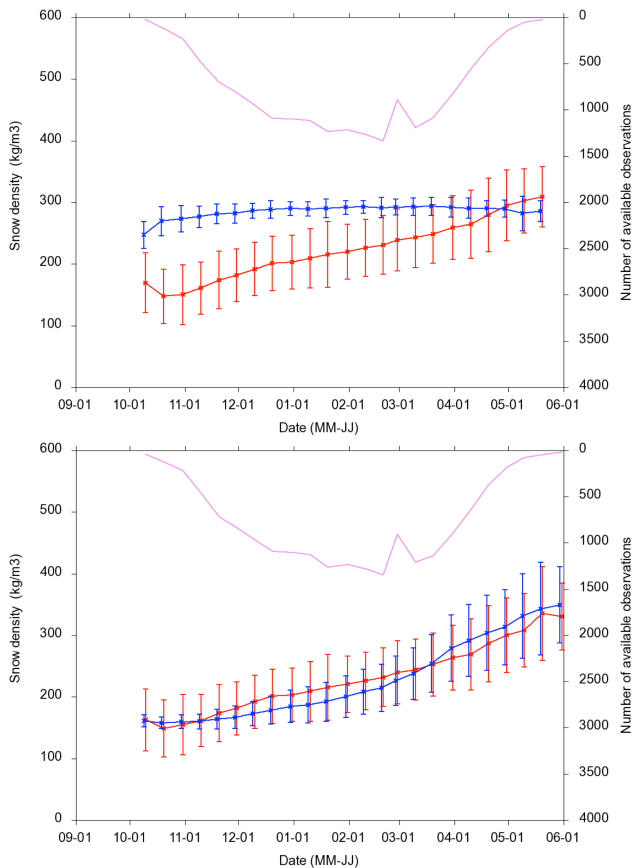
**Figure 10.** Correlation with observed ISMN soil moisture networks (as in Table 2) for ERA-Interim/Land (blue) and ERA-Interim (red). Only significant correlations with  $p$  values  $< 0.05$  are considered and for each of the observing networks the bars indicate the 95 % confidence interval calculated using a Fisher Z transform.



**Figure 11.** Taylor diagram illustrating the statistics from the comparison between ERA-Interim/Land (blue) and ERA-Interim (red), compared to in situ observations for 2010. Each symbol indicates the correlation value (angle), the normalized SD (radial distance to the origin point), and the normalized centred root mean square error (distance to the point marked “in situ”). Circles are for the stations of the AMMA network (3 stations), square for the OZNET network (36 stations), stars for the SMOSMANIA network (12 stations), triangles for the REMEDHUS network (17 stations), diamonds for the SCAN network (119 stations) and inverted triangle for the SNOTEL network (193 stations). Only stations with significant correlation values are considered.

### 3.2.2 Snow

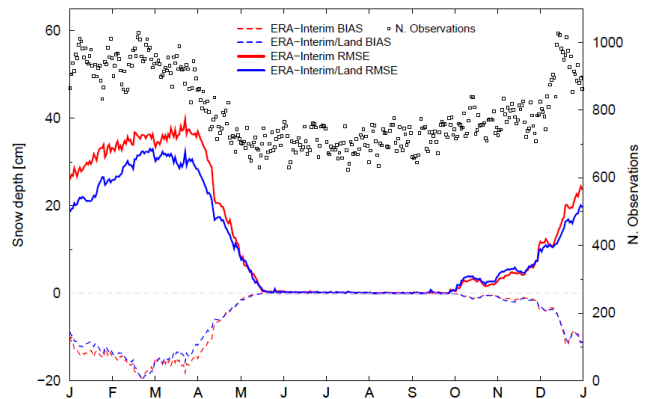
Dutra et al. (2010) attributed the largest improvement in the new snow scheme to the snow density representation. This could be confirmed with station data from the former USSR. At a large number of sites, snow density was measured in the snow season at typical northern latitudes from October to June from 1979 to 1993 (Brun et al., 2013). In ERA-Interim, as well as ERA-Interim/Land, snow density is not constrained by data assimilation due to a lack of observations that are exchanged routinely and therefore it relies solely on the capacity of the land surface model to represent the seasonal evolution, from about  $100 \text{ kg m}^{-3}$  at the beginning



**Figure 12.** Snow density seasonal evolution as observed (red) and estimated (blue) by ERA-Interim (top panel) and by ERA-Interim/Land (bottom panel). Each point represents the station data from the former USSR, averaged over about 20 points along transects around each station, all stations and all years from 1997 to 1993. The vertical bar indicates  $\pm 1$  standard deviation and the purple line indicates the number of observations with the right-hand scale from top to bottom. Observations are only included when both observations and model have snow. The snow season from October to June is considered only.

of the winter season to more than  $300 \text{ kg m}^{-3}$  towards the end of the snow season. Figure 12 clearly shows that the seasonal evolution of snow density of ERA-Interim/Land is much more realistic than in ERA-Interim, mainly because the density formulation in ERA-Interim relaxes too quickly to the  $300 \text{ kg m}^{-3}$  value. This is obviously also important for data assimilation of any snow depth observations, because snow depth has to be converted to snow mass making an assumption about snow density.

Verification of snow mass is difficult because, at best, snow depth is measured without information on density. Here routine SYNOP observations are used although the network is fairly sparse. Figure 13 shows the seasonal cycle of the RMSE of snow depth from ERA-Interim and ERA-Interim/Land over Europe (more than 600 observations daily). It is remarkable that ERA-Interim/Land has smaller



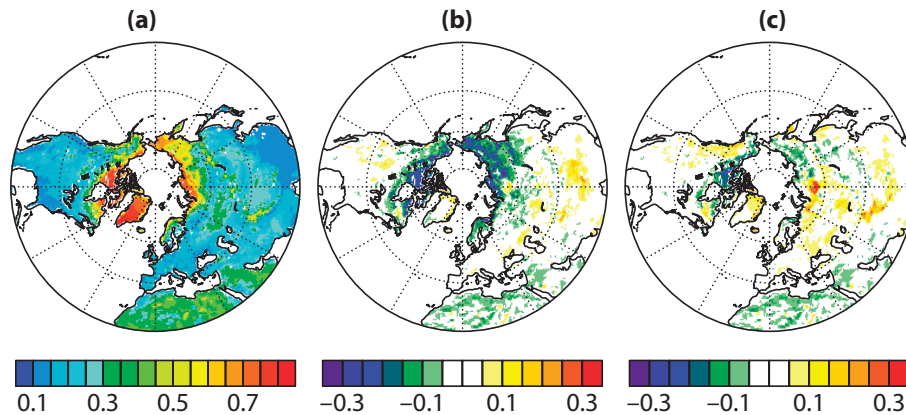
**Figure 13.** ERA-Interim snow depth RMSE/BIAS (solid/dashed red line) and ERA-Interim/Land snow depth RMSE/BIAS (solid/dashed blue line) with respect to the daily European SYNOP observations at 06:00 UTC. The number of stations with snow is indicated by squares (right y axis). Model snow depth combines the snow mass and density variables.

RMSEs than ERA-Interim, because the latter assimilates the same SYNOP observations and ERA-Interim/Land does not. The explanation is that the background field in ERA-Interim is so much worse than in ERA-Interim/Land that the analysis increments do not fully compensate for the poor background field. It is also remarkable that a good quality land snow mass analysis can be obtained without any constraint from direct snow mass observations. A good quality snowfall is obviously key to such a success.

Finally, the MODIS land surface albedo is used to verify ERA-Interim/Land, particularly in the snow representation in forest areas (Fig. 14) in northern Canada and Siberia, where conventional SYNOP observations are generally less informative. Figure 14c points to a substantially reduced albedo bias in ERA-Interim/Land attributed to the snow scheme revision described in Dutra et al. (2010) and in particular the snow–vegetation albedo retuning. The main improvement comes from the albedo optimization for vegetated areas. Particularly, forests tend to keep a low albedo with snow accumulating under the canopy rather than on it; however, in ERA-Interim forests with snow were specified to be too dark, not accounting for the openness of many forests, and ERA-Interim/Land has lighter snow-forest albedos. As albedo is an important component of the surface energy balance, it significantly affects the atmospheric heating and the timing of snowmelt in spring.

#### 4 Discussion

Dedicated land surface reanalyses, such as ERA-Interim/Land described and evaluated here, are becoming established added-value products within the reanalysis efforts worldwide (Dee et al., 2014). They allow computa-



**Figure 14.** Mean observed Northern Hemisphere albedo during spring (MAM) derived from MODIS (a), difference between ERA-Interim and MODIS (b), and difference between ERA-Interim/Land and MODIS (c).

tionally efficient testing of new land surface developments, including improvements to the process representation and parameterization of the hydrological and biogeochemical cycles that contribute to fast-track land surface model developments as identified by van den Hurk et al. (2011). Future research into improved representation of the land surface is high priority, and work already underway in this area includes land carbon exchanges (Boussetta et al., 2013b), vegetation interannual variability, and hydrological applications such as global water-bodies reanalysis (e.g. Balsamo et al., 2012) and global flood risk assessment (e.g. Pappenberger et al., 2012). More sophisticated rescaling methods (e.g. Weedon et al., 2011, 2014) are envisaged to bias-correct the meteorological forcing and to permit a high-resolution downscaling of land reanalysis. In addition, consideration of land surface parameterization uncertainty could be used to further improve predictive skill (e.g. Cloke et al., 2011).

Important developments with advanced land data assimilation methods such as the extended or ensemble Kalman filters (Reichle et al., 2014; de Rosnay et al., 2013; Drusch et al., 2009) can be combined with offline surface simulations. The experimental equivalence of offline and atmospheric coupled land data assimilation (Balsamo et al., 2007; Mahfouf et al., 2008) offers also in this case a 2 orders of magnitude computational saving. This is expected to provide a fast land surface reanalysis as envisaged within the EU-funded ERA-CLIM2 project. Moreover, it can open up new possibilities of more advanced data assimilation schemes (e.g. Fowler and van Leeuwen, 2012), especially designed for non-linear systems.

## 5 Conclusions

This paper documents the configuration and the performance of the ERA-Interim/Land reanalysis in reconstructing the land surface state over the past 3 decades. ERA-Interim/Land is produced with an improved land surface scheme in offline

simulations forced by ERA-Interim meteorological forcing. It has been demonstrated that the ERA-Interim/Land dedicated land surface reanalysis has added value over the standard land component of the ERA-Interim reanalysis product. The ERA-Interim/Land runs are an integral part of the ERA-Interim ongoing research efforts and respond to the wish to reactualize the land surface initial conditions of ERA-Interim, following several model parameterization improvements. The newly produced land surface estimates benefit from the latest land surface hydrology schemes used operationally at ECMWF for the medium-range, monthly, and seasonal forecasts. The ERA-Interim/Land added-value components encompass soil, snow and vegetation description upgrades, as well as a bias correction of the ERA-Interim monthly-accumulated precipitation based on GPCP v.2.1. In the Northern Hemisphere, the precipitation correction is shown to be effective in reducing the bias over the US and is rather neutral over Eurasia, while over tropical land clear benefits are seen in the river discharge.

The new land surface reanalysis has been verified against several data sets for the main water reservoirs (snow and soil moisture), together with the energy and water fluxes that have direct impact on the atmosphere. The verification makes use of both in situ observations and remote sensing products. A modest improvement has been seen in the latent heat fluxes, which turns out to be the result of a combination of deterioration due to the lack of soil moisture data assimilation, a substantial improvement due to model changes, and a small improvement due to GPCP precipitation bias correction. It is encouraging to see that the modelled runoff has been improved when compared to observed river discharge from the GRDC river network showing an enhanced correlation to the observations. The improvement compared to ERA-Interim is the combined effect of the GPCP precipitation correction and the land surface model improvements, and future work will extend the use of river discharge for supporting model development and disentangle the impact of different components

(e.g. meteorological forcing and parameterization changes) in the framework of the EU-funded Earth2Observe project.

Variability of soil moisture is improved due to the hydrology improvements and the introduction of a soil texture map. Also, bare soil areas indicate a distinct improvement related to the handling of the low soil moisture regime. Both snow depth and snow albedo are shown to have a better seasonal cycle, mainly due to the new model formulations. The model improvement appears to overwhelm the lack of data assimilation.

While river discharge verification is not enough for a global water balance assessment, the results from the verification of evaporation fluxes (the other main outgoing land water flux) and of the two main water reservoirs (soil moisture and snow-pack), permit to qualify the ERA-Interim/Land enhanced accuracy as genuine. When water fluxes and water storage terms show consistent indication of improvements there are in fact good grounds to believe that the parameterization changes are physically meaningful and not the result of compensating errors.

Finally, it is worth noting that offline land reanalysis plays an important role in the model development cycle of the operational system at ECMWF. The forecasting system uses back integrations covering the last 30 years with ERA-Interim as initial condition to obtain a model climate as reference for anomalies. As soon as the land surface model is changed substantially, it becomes important to have a consistent initial condition, and the latter is obtained by offline reanalysis. It has been demonstrated that this procedure has a positive effect on the back integrations particularly for the longer lead times (Balsamo et al., 2012; Vitart et al., 2008; Molteni et al., 2011).

Ongoing work focuses on interannual variability of vegetation state (leaf area index), efforts to extend the current ERA-Interim/Land data set beyond 2010, and future ECMWF reanalyses (Dee et al., 2014).

#### Data set access

The ERA-Interim/Land data set is freely available and can be downloaded from: <http://apps.ecmwf.int/datasets/>.

*Acknowledgements.* The authors thank R. Riddaway from ECMWF for his valuable comments on the text, and C. O'Sullivan, A. Bowen, S. Witter for their help preparing the figures. This work used eddy covariance data acquired by the FLUXNET community that is gratefully acknowledged. TU Wien provided the ISMN data for soil moisture verification and we thank them for their important effort. We thank the GRDC for data provision of global river discharge. The ECMWF User-Support team is acknowledged for making the data easily accessible.

Edited by: B. Su

#### References

- Adler, R. F., Huffman, G. J., Chang, A., Ferraro, R., Xie, P., Janowiak, J., Rudolf, B., Schneider, U., Curtis, S., Bolvin, D., Gruber, A., Susskind, J., Arkin, P., and Nelkin, E. J.: The Version 2.1 Global Precipitation Climatology Project (GPCP) Monthly Precipitation Analysis (1979–Present), *J. Hydrometeorol.*, 4, 1147–1167, 2003.
- Agusti-Panareda, A., Balsamo, G., and Beljaars, A.: Impact of improved soil moisture on the ECMWF precipitation forecast in West Africa, *Geophys. Res. Lett.*, 37, L20808, doi:10.1029/2010GL044748, 2010.
- Albergel, C., Rüdiger, C., Pellarin, T., Calvet, J.-C., Fritz, N., Froissard, F., Suquia, D., Petitpa, A., Pignatelli, B., and Martin, E.: From near-surface to root-zone soil moisture using an exponential filter: an assessment of the method based on in-situ observations and model simulations, *Hydrol. Earth Syst. Sci.*, 12, 1323–1337, doi:10.5194/hess-12-1323-2008, 2008.
- Albergel, C., Balsamo, G., de Rosnay, P., Muñoz-Sabater, J., and Boussetta, S.: A bare ground evaporation revision in the ECMWF land-surface scheme: evaluation of its impact using ground soil moisture and satellite microwave data, *Hydrol. Earth Syst. Sci.*, 16, 3607–3620, doi:10.5194/hess-16-3607-2012, 2012a.
- Albergel, C., de Rosnay, P., Balsamo, G., Isaksen, L., and Muñoz Sabater, J.: Soil moisture analyses at ECMWF: evaluation using global ground-based in-situ observations, *J. Hydrometeorol.*, 13, 1442–1460, 2012b.
- Albergel, C., de Rosnay, P., Gruhier, C., Muñoz-Sabater, J., Hasegauer, S., Isaksen, L., Kerr, Y., and Wagner, W.: Evaluation of remotely sensed and modelled soil moisture products using global ground-based in situ observations, *Remote Sens. Environ.*, 118, 215–226, doi:10.1016/j.rse.2011.11.017, 2012c.
- Albergel, C., Dorigo, W., Reichle, R. H., Balsamo, G., de Rosnay, P., Muñoz-Sabater, J., Isaksen, L., de Jeu, R., and Wagner, W.: Skill and global trend analysis of soil moisture from reanalyses and microwave remote sensing, *J. Hydrometeorol.*, 14, 1259–1277, doi:10.1175/JHM-D-12-0161.1, 2013.
- Baldocchi, D., Falge, E., Gu, L., Olson, R., Hollinger, D., Running, S., Anthoni, P., Bernhofer, C., Davis, K., Evans, R., Fuentes, J., Goldstein, A., Katul, G., Law, B., Lee, X., Malhi, Y., Meyers, T., Munger, W., Oechel, W., Paw, K. T., Pilegaard, K., Schmid, H. P., Valentini, R., Verma, S., Vesala, T., Wilson, K., and Wofsy, S.: FLUXNET: A new tool to study the temporal and spatial variability of ecosystem-scale carbon dioxide, water vapor, and energy flux densities, *B. Am. Meteorol. Soc.*, 82, 2415–2434, doi:10.1175/1520-0477(2001)082<2415:FANTTS>2.3.CO;2, 2001.
- Balsamo, G., Mahfouf, J.-F., Bélair, S., and Deblonde, G.: A land data assimilation system for soil moisture and temperature: An information content study, *J. Hydrometeorol.*, 8, 1225–1242, 2007.
- Balsamo, G., Viterbo, P., Beljaars, A., van den Hurk, B., Hirschi, M., Betts, A. K., and Scipal, K.: A revised hydrology for the ECMWF model: Verification from field site to terrestrial water storage and impact in the Integrated Forecast System, *J. Hydrometeorol.*, 10, 623–643, 2009.
- Balsamo, G., Boussetta, S., Lopez, P., and Ferranti, L.: Evaluation of ERA-Interim and ERA-Interim-GPCP-rescaled precipitation over the U.S.A., ERA Report Series No. 5, ECMWF, Reading, UK, 10 pp., 2010a.



- Balsamo, G., Pappenberger, F., Dutra, E., Viterbo, P., and van den Hurk, B.: A revised land hydrology in the ECMWF model: A step towards daily water flux prediction in a fully-closed water cycle, *Hydrol. Process.*, 25, 1046–1054, doi:10.1002/hyp.7808, 2010b.
- Balsamo, G., Boussetta, S., Dutra, E., Beljaars, A., Viterbo, P., and van den Hurk, B.: Evolution of land surface processes in the IFS, *ECMWF Newsl.*, 127, 17–22, 2011.
- Balsamo, G., Salgado, R., Dutra, E., Boussetta, S., Stockdale, T., and Potes, M.: On the contribution of lakes in predicting near-surface temperature in a global weather forecasting model, *Tellus A*, 64, 15829, doi:10.3402/tellusa.v64i0.15829, 2012.
- Beljaars, A., Viterbo, P., Miller, M., and Betts, A.: The anomalous rainfall over the USA during July 1993: Sensitivity to land surface parametrization and soil moisture anomalies, *Mon. Weather Rev.*, 124, 362–383, 1996.
- Berrisford, P., Kallberg, P., Kobayashi, S., Dee, D., Uppala, S., Simmons, A. J., Poli, P., and Sato, H.: Atmospheric conservation properties in ERA-Interim, *Q. J. Roy. Meteorol. Soc.*, 137, 1381–1399, doi:10.1002/qj.864, 2011.
- Betts, A. K., Ball, J. H., Barr, A. G., Black, T. A., McCaughey, J. H., and Viterbo, P.: Assessing land surface-atmosphere coupling in the ERA-40 re-analysis with boreal forest data, *Agr. Forest Meteorol.*, 140, 365–382, doi:10.1016/j.agrformet.2006.08.009, 2006.
- Betts, A. K., Köhler, M., and Zhang, Y.-C.: Comparison of river basin hydrometeorology in ERA-Interim and ERA-40 re-analyses with observations, *J. Geophys. Res.*, 114, D02101, doi:10.1029/2008JD010761, 2009.
- Boussetta, S., Balsamo, G., Beljaars, A., and Jarlan, J.: Impact of a satellite-derived Leaf Area Index monthly climatology in a global Numerical Weather Prediction model, *Int. J. Remote Sens.*, 34, 3520–3542, 2013a.
- Boussetta, S., Balsamo, G., Beljaars, A., Agustí-Panareda, A., Calvet, J.-C., Jacobs, C., van den Hurk, B., Viterbo, P., Lafont, S., Dutra, E., Jarlan, L., Balzarolo, M., Papale, D., and van der Werf, G.: Natural land carbon exchanges in the ECMWF Integrated Forecasting system: Implementation and offline validation, *J. Geophys. Res.*, 118, 1–24, 2013b.
- Brun, E., Vionnet, V., Boone, A., Decharme, B., Peings, Y., Valette, R., Karbou, F., and Morin, S.: Simulation of northern Eurasian local snow depth, mass and density using a detailed snowpack model and meteorological reanalyses, *J. Hydrometeorol.*, 14, 203–219, 2013.
- Ceballos, A., Scipal, K., Wagner, W., and Martínez-Fernández, J.: Validation of ERS scatterometer-derived soil moisture data in the central part of the Duero-Basin, Spain, *Hydrol. Process.*, 19, 1549–1566, 2005.
- Cloke, H. L., Weisheimer, A., and Pappenberger, F.: Representing uncertainty in land surface hydrology: fully coupled simulations with the ECMWF land surface scheme, *Proceeding of ECMWF, WMO/WGNE, WMO/THORPEX and WCRP Workshop on “Representing model uncertainty and error in numerical weather and climate prediction models”*, ECMWF, Reading, UK, June 2011.
- Cressman, G. P.: An operational objective analysis system, *Mon. Weather Rev.*, 87, 367–374, 1959.
- Decker, M., Brunke, M. A., Wang, Z., Sakaguchi, K., Zeng, X., and Bosilovich, M. G.: Evaluation of the reanalysis products from GSFC, NCEP, and ECMWF Using Flux Tower Observations, *J. Climate*, 25, 1916–1944, doi:10.1175/JCLI-D-11-00004.1, 2012.
- Dee, D. P., Uppala, S. M., Simmons, A. J., Berrisford, P., Poli, P., Kobayashi, S., Andrae, U., Balmaseda, M. A., Balsamo, G., Bauer, P., Bechtold, P., Beljaars, A., van de Berg, L., Bidlot, J., Bormann, N., Delsol, C., Dragani, R., Fuentes, M., Geer, A. J., Haimberger, L., Healy, S. B., Hersbach, H., Hólm, E. V., Isaksen, I., Kallberg, P., Köhler, M., Matricardi, M., McNally, A. P., Monge-Sanz, B. M., Morcrette, J.-J., Park, B. K., Peubey, C., de Rosnay, P., Tavolato, C., Thépaut, J.-N., and Vitart, F.: The ERA-Interim reanalysis: configuration and performance of the data assimilation system, *Q. J. Roy. Meteorol. Soc.*, 137, 553–597, doi:10.1002/qj.828, 2011.
- Dee, D., Balmaseda, M., Balsamo, G., Engelen, R., Simmons, A., and Thépaut, J.-N.: Toward a consistent reanalysis of the climate system, *B. Am. Meteorol. Soc.*, 95, 1235–1248, doi:10.1175/BAMS-D-13-00043.1, 2014.
- de Rosnay, P., Drusch, M., Vasiljevic, D., Balsamo, G., Albergel, C., and Isaksen, I.: A simplified Extended Kalman Filter for the global operational soil moisture analysis at ECMWF, *Q. J. Roy. Meteorol. Soc.*, 139, 1199–1213, doi:10.1002/qj.2023, 2013.
- de Rosnay, P., Balsamo, G., Albergel, C., Muñoz-Sabater, J., and Isaksen, I.: Initialisation of land surface variables for Numerical Weather Prediction, *Surv. Geophys.*, 35, 607–621, doi:10.1007/s10712-012-9207-x, 2014.
- Dirmeyer, P. A.: A history and review of the Global Soil Wetness Project (GSWP), *J. Hydrometeorol.*, 12, 729–749, doi:10.1175/JHM-D-10-05010.1, 2011.
- Dirmeyer, P. A., Gao, X., and Oki, T.: The second Global Soil Wetness Project – Science and implementation plan, IGPO Int. GEWEX Project Office Publ. Series 37, Global Energy and Water Cycle Exp. (GEWEX) Proj. Off., Silver Spring, MD, 65 pp., 2002.
- Dirmeyer, P. A., Gao, X., Zhao, M., Guo, Z., Oki, T., and Hanasaki, N.: GSWP-2: Multimodel analysis and implications for our perception of the land surface, *B. Am. Meteorol. Soc.*, 87, 1381–1397, 2006.
- Dorigo, W. A., Wagner, W., Hohensinn, R., Hahn, S., Paulik, C., Xaver, A., Gruber, A., Drusch, M., Mecklenburg, S., van Oevelen, P., Robock, A., and Jackson, T.: The International Soil Moisture Network: a data hosting facility for global in situ soil moisture measurements, *Hydrol. Earth Syst. Sci.*, 15, 1675–1698, doi:10.5194/hess-15-1675-2011, 2011.
- Dorigo, W. A., Xaver, A., Vreugdenhil, M., Gruber, A., Hegyiovai, A., Sanchis-Dufau, A. D., Wagner, W., and Drusch, M.: Global automated quality control of in-situ soil moisture data from the International Soil Moisture Network, *Vadose Zone J.*, 12, doi:10.2136/vzj2012.0097, 2013.
- Douville, H., Royer, J. F., and Mahfouf, J.-F.: A new snow parameterization for the Meteo-France climate model, 1: Validation in stand-alone experiments, *Clim. Dynam.*, 12, 21–35, 1995.
- Drusch, M. and Viterbo, P.: Assimilation of screen-level variables in ECMWF’s Integrated Forecast System: A study on the impact on the forecast quality and analyzed soil moisture, *Mon. Weather Rev.*, 135, 300–314, 2007.
- Drusch, M., Vasiljevic, D., and Viterbo, P.: ECMWF’s global snow analysis: assessment and revision based on satellite observations, *J. Appl. Meteorol.*, 43, 1282–1294, 2004.

- Drusch, M., Scipal, K., de Rosnay, P., Balsamo, G., Andersson, E., Bougeault, P., and Viterbo, P.: Towards a Kalman Filter based soil moisture analysis system for the operational ECMWF Integrated Forecast System, *Geophys. Res. Lett.*, 36, L10401, doi:10.1029/2009GL037716, 2009.
- Dutra, E., Balsamo, G., Viterbo, P., Miranda, P., Beljaars, A., Schär, C., and Elder, K.: An improved snow scheme for the ECMWF land surface model: description and offline validation, *J. Hydrometeorol.*, 11, 899–916, doi:10.1175/JHM-D-11-072.1, 2010.
- Dutra, E., Viterbo, P., Miranda, P. M. A., and Balsamo, G.: Complexity of snow schemes in a climate model and its impact on surface energy and hydrology, *J. Hydrometeorol.*, 13, 521–538, doi:10.1175/jhm-d-11-072, 2012.
- Fowler, A. and van Leeuwen, P.: Measures of observation impact in non-Gaussian data assimilation, *Tellus A*, 64, 17192, doi:10.3402/tellusa.v64i0.17192, 2012.
- Huffman, G. J., Adler, R. F., Bolvin, D. T., and Gu, G.: Improving the global precipitation record: GPCP Version 2.1, *Geophys. Res. Lett.*, 36, L17808, doi:10.1029/2009GL040000, 2009.
- Källberg, P.: Forecast drift in ERA-Interim, ERA Report Series No. 10, ECMWF, Reading, UK, 9 pp., 2011.
- Koster, R. D., Guo, Z., Dirmeyer, P. A., Bonan, G., Chan, E., Cox, P., Davies, H., Gordon, C. T., Kanae, S., Kowalczyk, E., Lawrence, D., Liu, P., Lu, C. H., Malyshev, S., McAvaney, B., Mitchell, K., Mocko, D., Oki, T., Oleson, K. W., Pitman, A., Sud, Y. C., Taylor, C. M., Verseghy, D., Vasic, R., Xue, Y., and Yamada, T.: GLACE: The Global Land-Atmosphere Coupling Experiment, Part I: Overview, *J. Hydrometeorol.*, 7, 590–610, 2006.
- Koster, R., Mahanama, S., Yamada, T., Balsamo, G., Boissierie, M., Dirmeyer, P., Doblas-Reyes, F., Gordon, T., Guo, Z., Jeong, J.-H., Lawrence, D., Li, Z., Luo, L., Malyshev, S., Merryfield, W., Seneviratne, S. I., Stanelle, T., van den Hurk, B., Vitart, F., and Wood, E. F.: The contribution of land surface initialization to sub-seasonal forecast skill: First results from the GLACE-2 Project, *Geophys. Res. Lett.*, 37, L02402, doi:10.1029/2009GL041677, 2009.
- Koster, R., Mahanama, S. P. P., Yamada, T. J., Balsamo, G., Berg, A. A., Boissierie, M., Dirmeyer, P. A., Doblas-Reyes, F. J., Drewitt, G., Gordon, C. T., Guo, Z., Jeong, J.-H., Lee, W.-S., Li, Z., Luo, L., Malyshev, S., Merryfield, W. J., Seneviratne, S. I., Stanelle, T., van den Hurk, B. J. J. M., Vitart, F., and Wood, E. F.: The second phase of the global land-atmosphere coupling experiment: soil moisture contributions to sub-seasonal forecast skill, *J. Hydrometeorol.*, 12, 805–822, doi:10.1175/2011JHM1365.1, 2011.
- Mahfouf, J.-F. and Noilhan, J.: Comparative study of various formulations of evaporation from bare soil using in situ data, *J. Appl. Meteorol.*, 30, 351–362, 1991.
- Mahfouf, J.-F., Bergaoui, K., Draper, C., Bouyseel, F., Taillefer, F., and Taseva, L.: A comparison of two off-line soil analysis schemes for assimilation of screen level observations, *J. Geophys. Res.*, 114, D08105, doi:10.1029/2008JD011077, 2008.
- Molteni, F., Stockdale, T., Balmaseda, M., Balsamo, G., Buizza, R., Ferranti, L., Magnusson, L., Mogensen, K., Palmer, T., and Vitart, F.: The new ECMWF seasonal forecast system (System 4), ECMWF Tech. Memo No. 656, ECMWF, Reading, UK, 2011.
- Oki, T. and Kanae, S.: Global hydrological cycles and world water resources, *Science*, 313, 1068–1072, doi:10.1126/science.1128845, 2006.
- Pappenberger, F., Cloke, H., Balsamo, G., Ngo-Duc, T., and Oki, T.: Global runoff routing with the hydrological component of the ECMWF NWP system, *Int. J. Climatol.*, 30, 2155–2174, doi:10.1002/joc.2028, 2009.
- Pappenberger, F., Dutra, E., Wetterhall, F., and Cloke, H. L.: Deriving global flood hazard maps of fluvial floods through a physical model cascade, *Hydrol. Earth Syst. Sci.*, 16, 4143–4156, doi:10.5194/hess-16-4143-2012, 2012.
- Pellarin, T., Laurent, J. P., Cappelaere, B., Decharme, B., Desroix, L., and Ramier, D.: Hydrological modelling and associated microwave emission of a semi-arid region in south-western Niger, *J. Hydrol.*, 375, 262–272, 2009.
- Polcher, J., McAvaney, B., Viterbo, P., Gaertner, M.-A., Hahamann, A., Mahfouf, J.-F., Noilhan, J., Phillips, T., Pitman, A., Schlosser, C., Schulz, J.-P., Timbal, B., Verseghy, D., and Xue, Y.: A proposal for a general interface between land surface schemes and general circulation models, *Global Planet. Change*, 19, 261–276, 1998.
- Reichle, R. H., Koster, R. D., De Lannoy, G. J. M., Forman, B. A., Liu, Q., Mahanama, S. P. P., and Toure, A.: Assessment and enhancement of MERRA land surface hydrology estimates, *J. Climate*, 24, 6322–6338, doi:10.1175/JCLI-D-10-05033.1, 2011.
- Reichle, R. H., De Lannoy, G. J. M., Forman, B. A., Draper, C. S., and Liu, Q.: Connecting satellite observations with water cycle variables through land data assimilation: Examples using the NASA GEOS-5 LDAS, *Surv. Geophys.*, 35, 577–606, doi:10.1007/s10712-013-9220-8, 2014.
- Rienecker, M. M., Suarez, M. J., Gelaro, R., Todling, R., Julio, B., Liu, E., Bosilovich, M. G., Schubert, S. D., Takacs, L., Kim, G.-K., Bloom, S., Chen, J., Collins, D., Conaty, A., da Silva, A., Gu, W., Joiner, J., Koster, R. D., Lucchesi, R., Molod, A., Owens, T., Pawson, S., Pegion, P., Redder, C. R., Reichle, R., Robertson, F. R., Ruddick, A. G., Sienkiewicz, M., and Woollen, J.: MERRA – NASA’s modern-era retrospective analysis for research and applications, *J. Climate*, 24, 3624–3648, doi:10.1175/JCLI-D-11-00015.1, 2011.
- Román, M. O., Schaaf, C. B., Woodcock, C. E., Strahler, A. H., Yang, X., Braswell, R. H., Curtis, P. S., Davis, K. J., Dragoni, D., Goulden, M. L., Gu, L., Hollinger, D. Y., Kolb, T. E., Meyers, T. P., Munger, J. W., Privette, J. L., Richardson, A. D., Wilson, T. B., and Wofsy, S. C.: The MODIS (Collection V005) BRDF/albedo product: Assessment of spatial representativeness over forested landscapes, *Remote Sens. Environ.*, 113, 2476–2498, 2009.
- Salomon, J. G., Schaaf, C. B., Strahler, A. H., Gao, F., and Jin, Y. F.: Validation of the MODIS bidirectional reflectance distribution function and albedo retrievals using combined observations from the Aqua and Terra platforms, *IEEE T. Geosci. Remote*, 44, 1555–1565, 2006.
- Schaefer, G. L. and Paetzold, R. F.: SNOTEL (SNOWpack TElemetry) and SCAN (Soil Climate Analysis Network), in: Automated Weather Stations for Applications in Agriculture and Water Resources Management: Current Use and Future Perspectives, Hubbard, edited by: Kenneth G. and Sivakumar, M. V. K., Proceedings of an International Workshop, 6–10 March 2000, <http://www.wamis.org/agm/pubs/agm3/WMO-TD1074.pdf>, USA High Plains Climate Center Lincoln, Nebraska, and World Meteorological Organization, Geneva, Switzerland, 248 pp., 2001.

- Simmons, A. J., Willett, K. M., Jones, P. D., Thorne, P. W., and Dee, D. P.: Low-frequency variations in surface atmospheric humidity, temperature and precipitation: Inferences from reanalyses and monthly gridded observational datasets, *J. Geophys. Res.*, 115, 1–21, doi:10.1029/2009JD012442, 2010.
- Smith, A. B., Walker, J. P., Western, A. W., Young, R. I., Ellett, K. M., Pipunic, R. C., Grayson, R. B., Siriwardena, L., Chiew, F. H. S., and Richter, H.: The Murrumbidgee soil moisture monitoring network data set, *Water Resour. Res.*, 48, W07701, doi:10.1029/2012WR011976, 2012.
- Szczypta, C., Calvet, J.-C., Albergel, C., Balsamo, G., Boussetta, S., Carrer, D., Lafont, S., and Meurey, C.: Verification of the new ECMWF ERA-Interim reanalysis over France, *Hydrol. Earth Syst. Sci.*, 15, 647–666, doi:10.5194/hess-15-647-2011, 2011.
- van den Hurk, B. and Viterbo, O.: The Torne-Kalix PILPS 2(e) experiment as a test bed for modifications to the ECMWF land surface scheme, *Global Planet. Change*, 38, 165–173, 2003.
- van den Hurk, B., Viterbo, P., Beljaars, A., and Betts, A. K.: Offline validation of the ERA-40 surface scheme, ECMWF Tech. Memo. No. 295, ECMWF, Reading, UK, 2000.
- van den Hurk, B., Best, M., Dirmeyer, P., Pitman, A., Polcher, J., and Santanello, J.: Acceleration of Land Surface Model Development over a Decade of Glass, *B. Am. Meteorol. Soc.*, 92, 1593–1600, doi:10.1175/BAMS-D-11-00007.1, 2011.
- Vitart, F., Buizza, R., Alonso Balmaseda, M., Balsamo, G., Bidlot, J.-R., Bonet, A., Fuentes, M., Hofstadler, A., Molteni, F., and Palmer, T.: The new VAREPS-monthly forecasting system: a first step towards seamless prediction, *Q. J. Roy. Meteorol. Soc.*, 134, 1789–1799, 2008.
- Viterbo, P. and Betts, A. K.: Impact of the ECMWF reanalysis soil water on forecasts of the July 1993 Mississippi flood, *J. Geophys. Res.-Atmos.*, 104, 19361–19366, 1999.
- Wang, Z. and Zeng, X. B.: Evaluation of snow albedo in land models for weather and climate studies, *J Appl. Meteorol. Clim.*, 49, 363–380, doi:10.1175/2009jamc2134.1, 2010.
- Weedon, G. P., Gomes, S., Viterbo, P., Shuttleworth, W. J., Blyth, E., Österle, H., Adam, J. C., Bellouin, N., Boucher, O., and Best, M.: Creation of the WATCH Forcing Data and its use to assess global and regional reference crop evaporation over land during the twentieth century, *J. Hydrometeorol.*, 12, 823–848, 2011.
- Weedon, G. P., Balsamo, G., Bellouin, N., Gomes, S., Best, M. J., and Vidale, P.-L.: The WFDEI meteorological forcing dataset: WATCH forcing data methodology applied to ERA-Interim reanalysis data, *Water Resour. Res.*, 50, 7505–7514, doi:10.1002/2014WR015638, 2014.
- Zhou, L., Dickinson, R. E., Tian, Y., Zeng, X., Dai, Y., Yang, Z.-L., Schaaf, C. B., Gao, F., Jin, Y., Strahler, A., Myneni, R. B., Yu, H., Wu, W., and Shaikh, M.: Comparison of seasonal and spatial variations of albedos from Moderate-Resolution Imaging Spectroradiometer (MODIS) and common land model, *J. Geophys. Res.*, 108, 4488, doi:10.1029/2002jd003326, 2003.