



## *Corrigendum to* “An ice core derived 1013-year catchment-scale annual rainfall reconstruction in subtropical eastern Australia” published in *Hydrol. Earth Syst. Sci.*, 20, 1703–1717, 2016

Carly R. Tozer<sup>1,2</sup>, Tessa R. Vance<sup>1</sup>, Jason L. Roberts<sup>3,1</sup>, Anthony S. Kiem<sup>2</sup>, Mark A. J. Curran<sup>3,1</sup>, and Andrew D. Moy<sup>3,1</sup>

<sup>1</sup>Antarctic Climate & Ecosystems Cooperative Research Centre, University of Tasmania, Hobart, Tasmania 7001, Australia

<sup>2</sup>Centre for Water, Climate and Land Use, University of Newcastle, Callaghan, NSW 2308, Australia

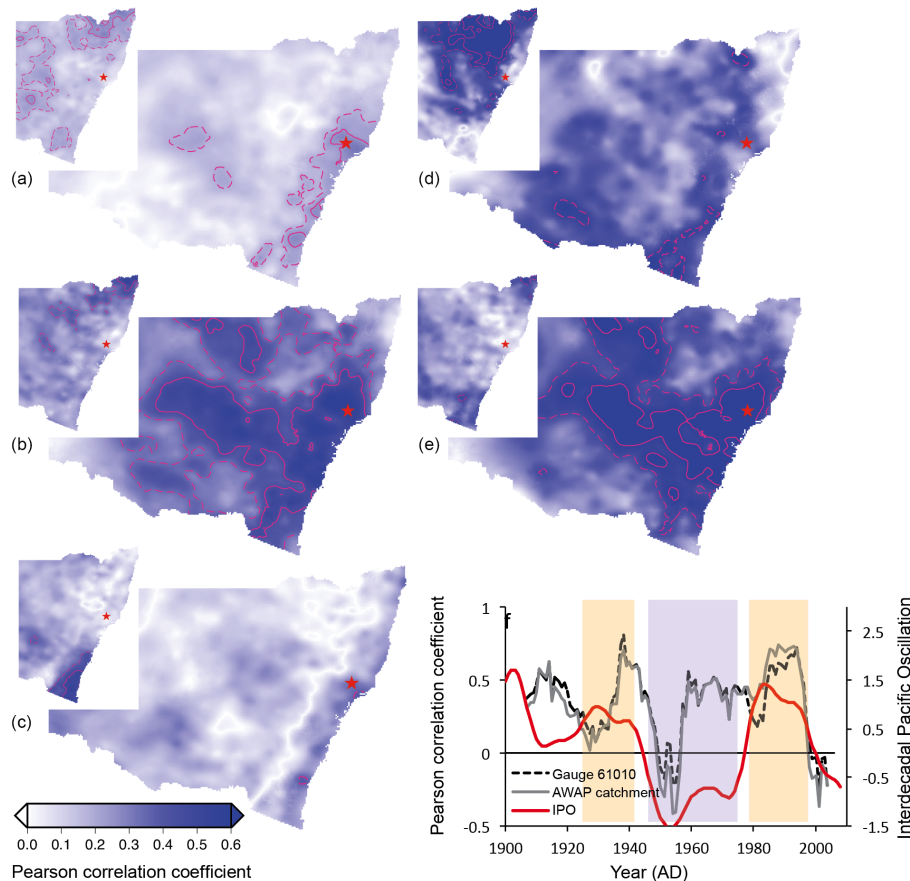
<sup>3</sup>Australian Antarctic Division, Kingston, Tasmania 7050, Australia

*Correspondence to:* Carly R. Tozer (carly.tozer@utas.edu.au)

Published: 18 May 2016

In the published paper by C. R. Tozer et al., titled “An ice core derived 1013-year catchment-scale annual rainfall reconstruction in subtropical eastern Australia”, a correction to the last sentence in the caption of Fig. 3 is required.

Currently the sentence reads: “Note that for (a–e) the star represents the location of the WR catchment centroid, dashed pink line shows 99 % significance level.” The sentence needs to be updated to read: “Note that for (a–e) the star represents the location of the WR catchment centroid, dashed pink line shows 95 % significance level, bold pink line shows 99 % significance level.” Please find the correct version of Fig. 3 and its caption below.



**Figure 3.** Correlations between (a) 12-month average (October–September) AWAP rainfall and LD<sub>SSS</sub> for the 1900–2010 period with inset showing correlations between annual AWAP rainfall calculated from January–December and LD<sub>SSS</sub> for 1900–2010 period, (b) as in (a) but for the combined IPO positive phases (1924–1941, 1979–1997), (c) as in (a) but for the IPO negative phase (1947–1975), (d) as in (a) but for the first IPO positive (1924–1941) phase (e) as in (a) but for the second IPO positive (1979–1997) phase and (f) 13-year moving window correlations between 12-month average (October–September) rainfall recorded at gauge 61010 and the AWAP WR catchment average and LD<sub>SSS</sub> with shading indicating IPO positive (yellow) and IPO negative (purple) phases (red line shown indicates 13-year smoothed instrumental IPO record). Note that for (a–e) the star represents the location of the WR catchment centroid, dashed pink line shows 95 % significance level, bold pink line shows 99 % significance level.