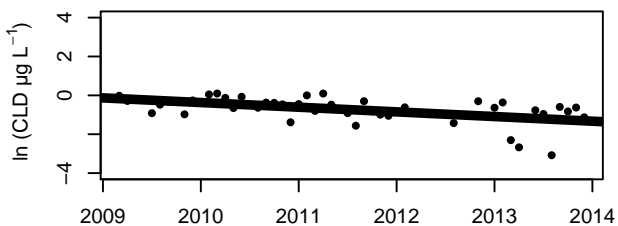
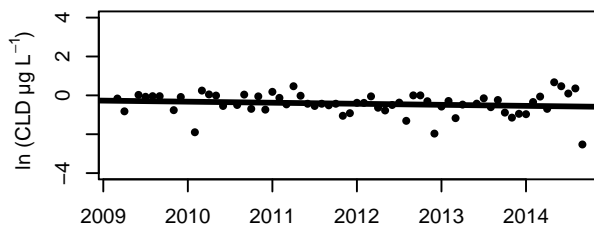
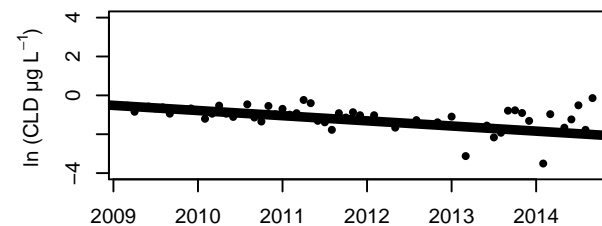


Present ; Ferr_And ; Pont RN1

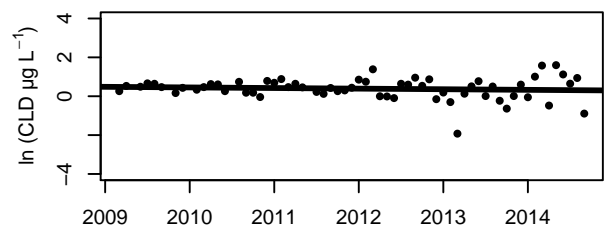
Sen = -0.02 [-0.026 ; -0.014]
 p value = $2.9e-10$ ***

Present ; Ferralsol ; Ressource

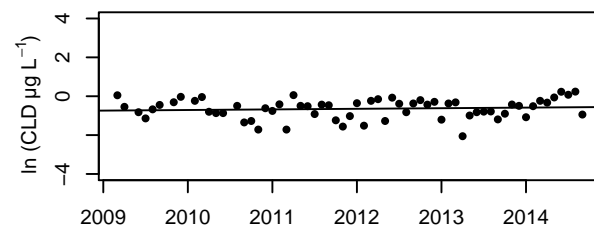
Sen = -0.0045 [-0.007 ; -0.002]
 p value = 0.0012 **

0.1 to present ; Andosol ; AEP – Vive – CApot

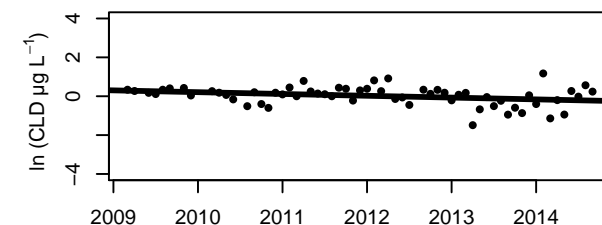
Sen = -0.018 [-0.024 ; -0.011]
 p value = $5e-07$ ***

0.1 to present ; Andosol ; Amont Bourg Basse-Pointe

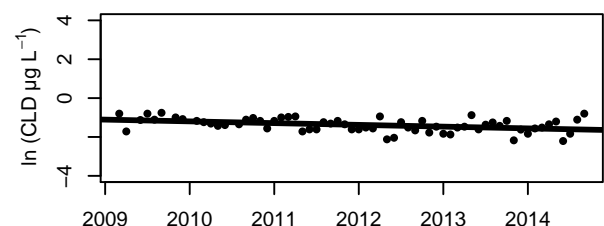
Sen = -0.0021 [-0.0054 ; 0.00079]
 p value = 0.22 NS

0.1 to present ; Andosol ; Camping Macouba

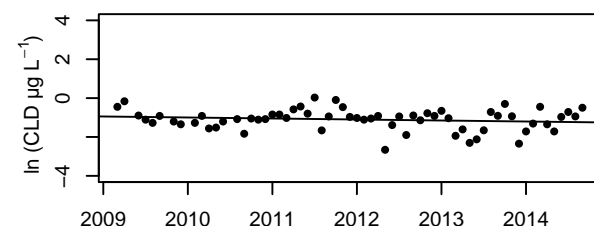
Sen = 0.0034 [0 ; 0.0072]
 p value = 0.053 o

0.1 to present ; Andosol ; Pocquet RN1

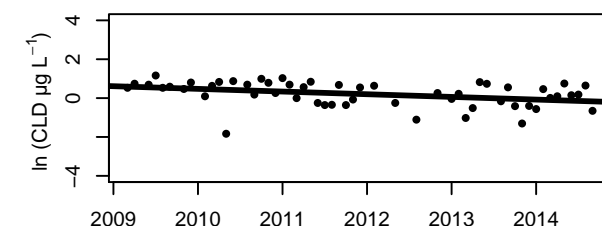
Sen = -0.0074 [-0.011 ; -0.0041]
 p value = $4.5e-06$ ***

0.1 to present ; Andosol ; Pont mackintosh

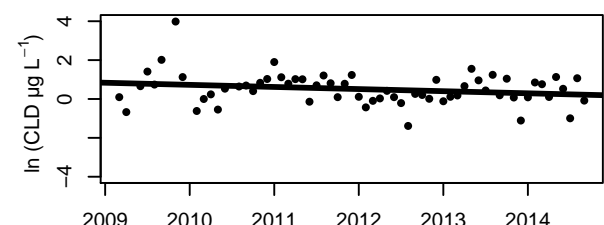
Sen = -0.0084 [-0.011 ; -0.0059]
 p value = $1.8e-10$ ***

0.1 to present ; Andosol ; Saint Pierre (ancien pont)

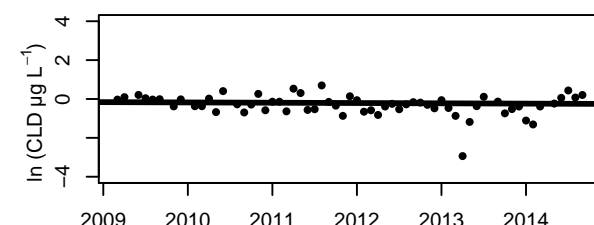
Sen = $-9e-04$ [-0.0061 ; 0.0032]
 p value = 0.57 NS

5.1 to 1.5 ; Andosol ; Pont Belle Ile

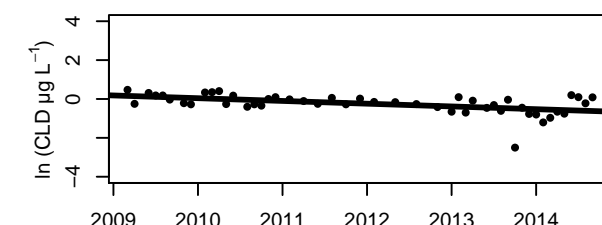
Sen = -0.015 [-0.018 ; -0.011]
 p value = $4.9e-16$ ***

5.1 to 1.5 ; Andosol ; Pont RN Rouge

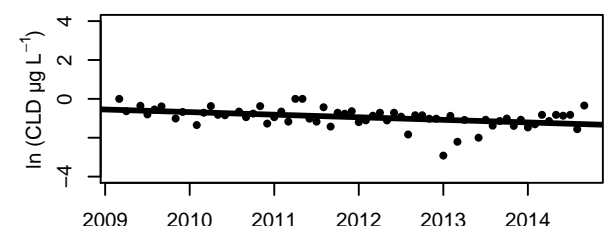
Sen = -0.0051 [-0.011 ; 0.00042]
 p value = 0.09 o

16.1 to 8.5 ; Ferr_And ; Grand Galion

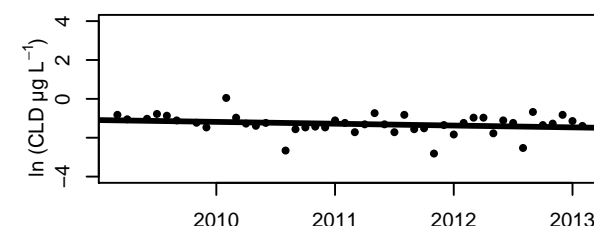
Sen = -0.0054 [-0.0075 ; -0.0026]
 p value = 0.00025 ***

16.1 to 8.5 ; Ferralsol ; Brasserie Lorraine

Sen = -0.017 [-0.021 ; -0.014]
 p value = $8.5e-17$ ***

16.1 to 8.5 ; Ferralsol ; Petit Bourg

Sen = -0.01 [-0.014 ; -0.0074]
 p value = $5.6e-11$ ***

16.1 to 8.5 ; Vertisol ; Pont Seraphin

Sen = -0.0063 [-0.012 ; -0.0013]
 p value = 0.0071 **