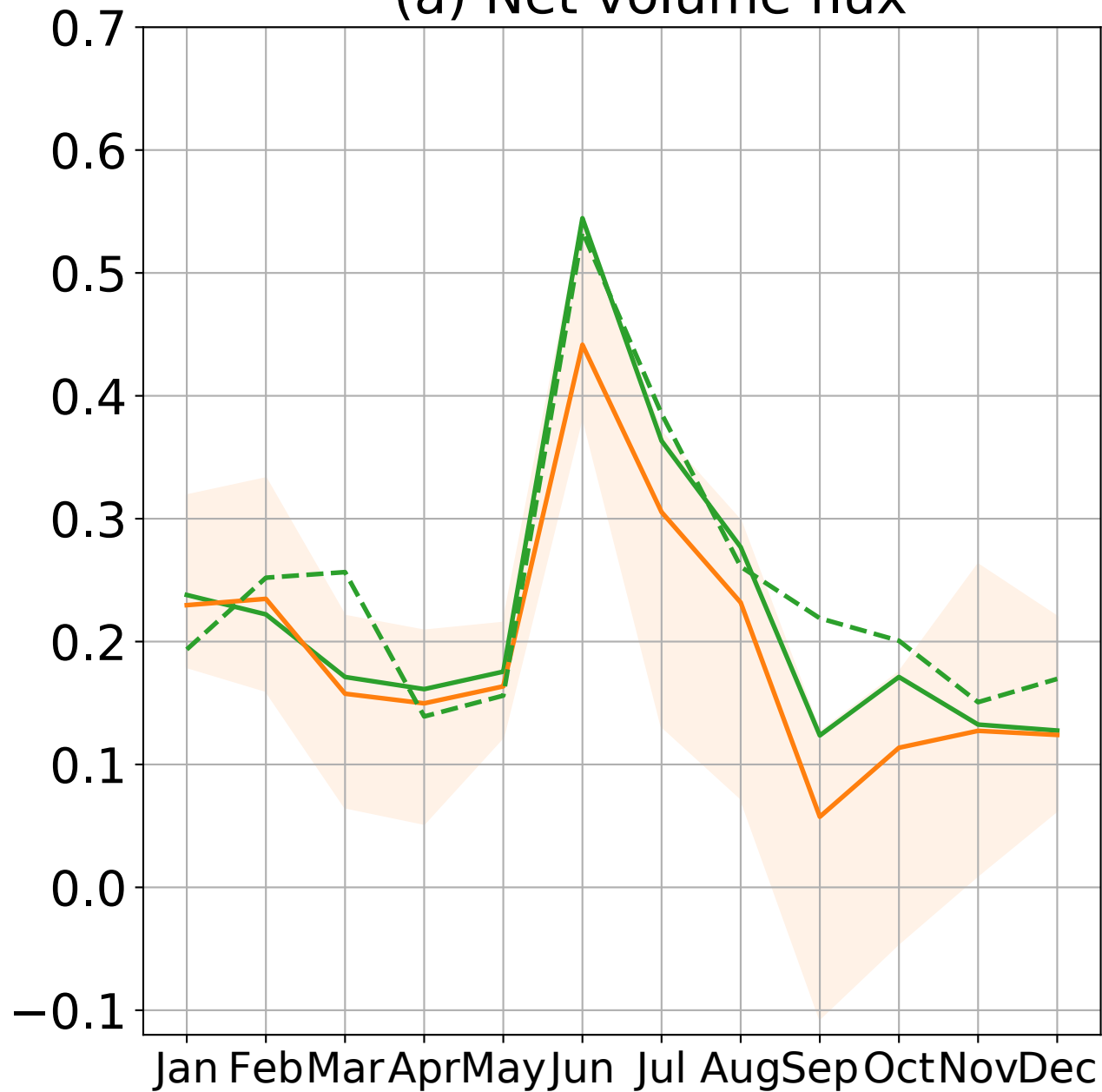
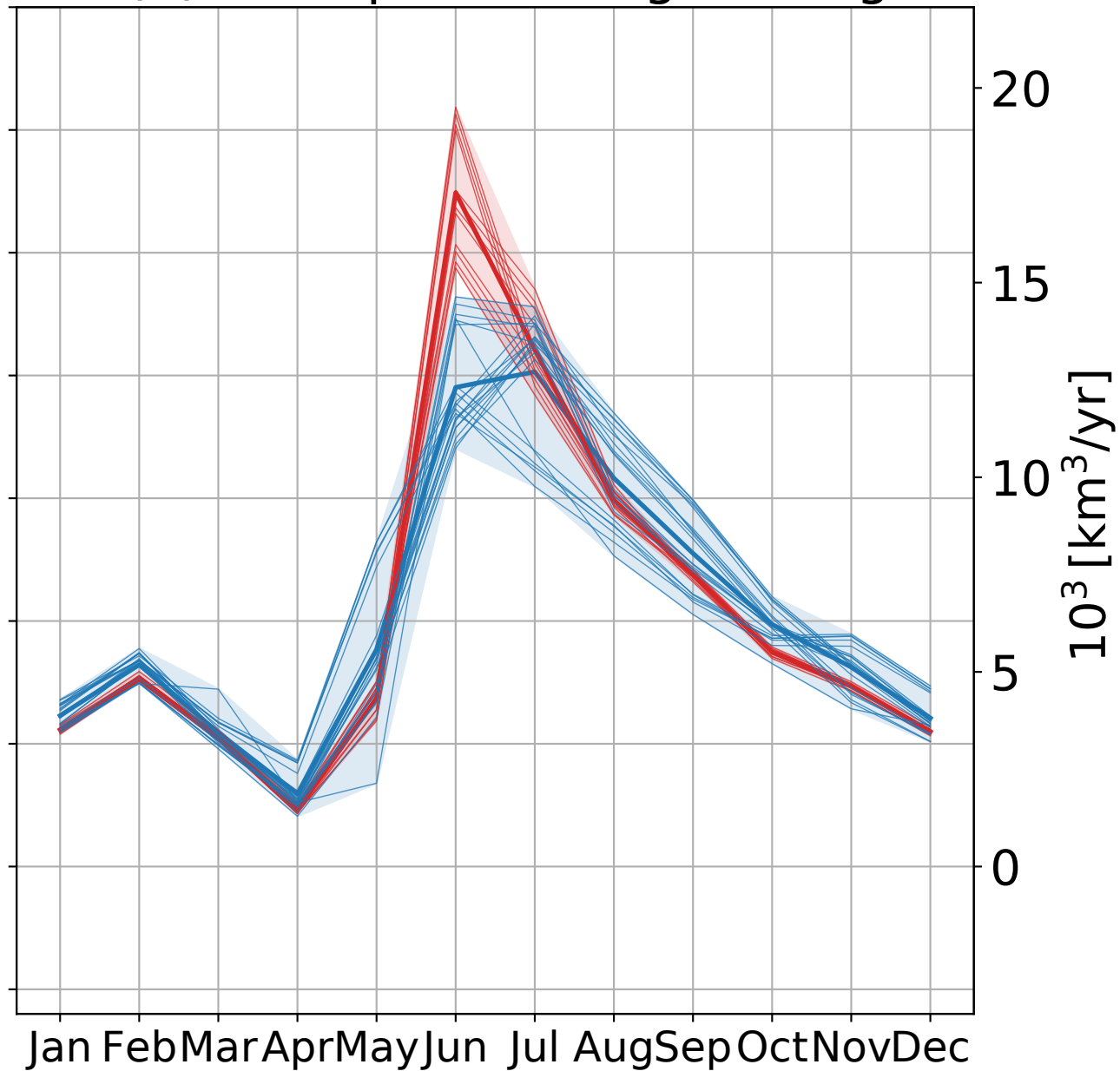


(a) Net volume flux



— ORAS5 93-18: F_{liquid} , $\mu = 7329$
— GREP 93-18: F_{liquid} , $\mu = 6386 \pm 1514$
- - - ORAS5 forcing, $\mu = 7666$

(b) FW input - storage change



— reana. based esti., $\mu = 6511 \pm 139$
— obs. based esti., $\mu = 6545 \pm 99$