

ОБЪЕДИНЕННЫЙ  
ИНСТИТУТ  
ЯДЕРНЫХ  
ИССЛЕДОВАНИЙ  
ДУБНА

УД 9406457

E2-94-153

M.N. Tentyukov\*

WORMHOLE ON THE LOBACHEVSKY  
BACKGROUND

Submitted to «Proceedings of the Alexander Friedmann International  
Seminar on Gravitation and Cosmology», St. Petersburg,  
September, 1993

---

\*e-mail: [tentyukov@theor.jinrc.dubna.su](mailto:tentyukov@theor.jinrc.dubna.su)

1994

During many years, numerous attempts were made to extend the Einstein gravitation. One of these attempts is the well - known bimetric theories. At first, this type of models were considered by N. Rosen. He has treated some special cases when the background metric is a flat [1] or constant curvature metric [2]. If the background metric is flat (or Ricci - flat), the Rosen equations coincide with the Einstein ones. On the contrary, when the background metric is not flat, the equations obtained differ from the Einstein equations and nobody found spherically symmetric solutions to these equations.

Recently, Chernikov suggested considering a new interesting case [3] when the background metric

$$d\check{s}^2 = \check{g}_{ij} dx^i dx^j$$

describes the space - time that is a direct product of 3-dimensional Lobachevsky space and the "cosmic time"  $c^2 dt^2$ :

$$d\check{s}^2 = c^2 dt^2 - dr^2 - k^2 \sinh^2 \frac{r}{k} (d\theta^2 + \sin^2 \theta d\phi^2), \quad (1)$$

where the Lobachevsky constant  $k$  is the radius of the spatial curvature.

The Rosen - like equations are

$$R_{ij} = \check{R}_{ij}. \quad (2)$$

Here  $R_{ij} = R^a_{aij}$  is the Ricci tensor of the physical metric  $g_{ij}$ , where the Riemann tensor

$$R^a_{kln} = \partial_k \Gamma^a_{ln} - \partial_l \Gamma^a_{kn} + \Gamma^a_{ks} \Gamma^s_{ln} - \Gamma^a_{ls} \Gamma^s_{kn};$$

$\check{R}_{ij}$  is the background Ricci tensor.

These equations are derived from the Rosen - like Lagrangian

$$L = \sqrt{-g} g^{mn} (P^a_{mb} P^b_{an} - P^a_{sa} P^s_{mn}),$$

where the affine - deformation tensor

$$P^i_{mn} = \check{\Gamma}^k_{mn} - \Gamma^k_{mn}$$

is the difference between the background connection coefficients  $\check{\Gamma}_{mn}^k$  and the Christoffel symbols  $\Gamma_{mn}^k$ . Let us denote

$$d\Omega^2 = d\theta^2 + \sin^2\theta d\phi^2,$$

$$\Lambda_1 = \exp(2r_0/k) \frac{\sinh \frac{r-r_0}{k}}{\sinh \frac{r+r_0}{k}},$$

$$\Lambda_2 = \exp(2r_0/k) \frac{\cosh \frac{r-r_0}{k}}{\cosh \frac{r+r_0}{k}}.$$

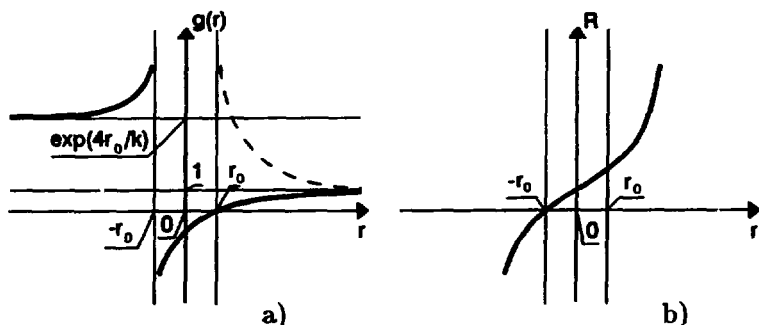
Chernikov found [3] the spherically symmetric solution

$$ds_1^2 = \Lambda_1 c^2 dt^2 - \Lambda_1^{-1} dr^2 - \exp(-2r_0/k) k^2 \sinh^2 \frac{r+r_0}{k} d\Omega^2. \quad (3)$$

Here  $r_0$  corresponds to the Schwarzschild radius in the harmonic coordinates. This solution coincides with the well-known Schwarzschild metric in the Fock representation

$$ds^2 = \frac{r-r_0}{r+r_0} c^2 dt^2 - \frac{r+r_0}{r-r_0} dr^2 - (r+r_0)^2 d\Omega^2, \quad (4)$$

if we put  $k \rightarrow \infty$ .



**Fig. 1.** The metric function and the luminosity distance for the metric (3). The dashed line shows the value of  $g^{-1}$

However, this solution is not unique, and there is another branch of the solution [4] which has not Einstein's limit:

$$ds_2^2 = \Lambda_2 c^2 dt^2 - \Lambda_2^{-1} dr^2 - \exp(-2r_0/k) k^2 \cosh^2 \frac{r+r_0}{k} d\Omega^2. \quad (5)$$

All the spherically symmetric static metrics can be written as

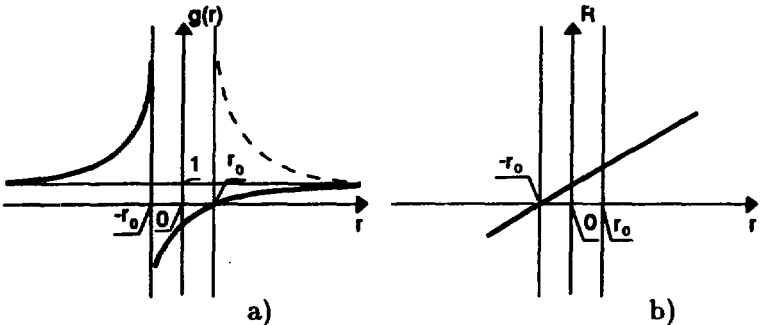
$$ds^2 = g c^2 dt^2 - \frac{1}{g} dr^2 - R^2 d\Omega^2.$$

The solution (3) corresponds to the choice of  $g$  and  $R$  as is shown in fig. 1.

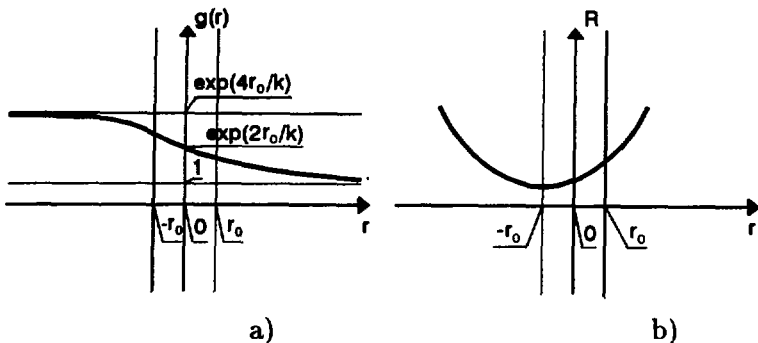
The conventional Fock metric is shown in fig. 2, and the solution (5) is illustrated by fig. 3.

We can see that  $R$  in metrics (3) and (4) is a monotonic function of the radial coordinate  $r$ . Both these solutions have singularity at  $r = -r_0$  and horizon at  $r = r_0$ .

On the contrary, the solution (5) is free from singularities. It is worth noting that in this case the quantity  $R$  has the minimum at  $r = -r_0$  and  $g$  changes in the limits  $1 < g < \exp 4r_0/k$ . It means that the space - time described by this metric must be extended for negative values of  $r$ .

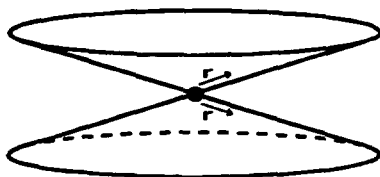


**Fig. 2.** The metric function and the luminosity distance for the Fock metric (4). The dashed line shows the value of  $g^{-1}$



**Fig. 3.** The metric function and the luminosity distance for the metric (5)

The total space - time can be considered as a solution of eq. (2) if the spatial sections of the background metric consist of two Lobachevsky spaces glued at  $r = 0$  as shown in fig. 4.



**Fig. 4.** The spatial section of the background metric embedded in fictitious high - dimensional space

For interpretation of the region with negative  $r$ , we can do the following coordinate and constant transformations:

$$\begin{aligned} \tilde{r} &= -r \exp\left(-\frac{2r_0}{k}\right); & \tilde{t} &= t \exp\left(\frac{2r_0}{k}\right); \\ \tilde{k} &= k \exp\left(-\frac{2r_0}{k}\right); & \tilde{r}_0 &= r_0 \exp\left(-\frac{2r_0}{k}\right). \end{aligned}$$

Note that  $\tilde{r}_0/\tilde{k} = r_0/k$ ,  $k > \tilde{k}$ . The metric (5) takes the form

$$d\tilde{s}^2 = \tilde{\Lambda}_2 c^2 d\tilde{t}^2 - \tilde{\Lambda}_2^{-1} - \exp\left(\frac{2\tilde{r}_0}{\tilde{k}}\right) \tilde{k}^2 \cosh^2 \frac{\tilde{r} - \tilde{r}_0}{\tilde{k}} d\Omega^2,$$

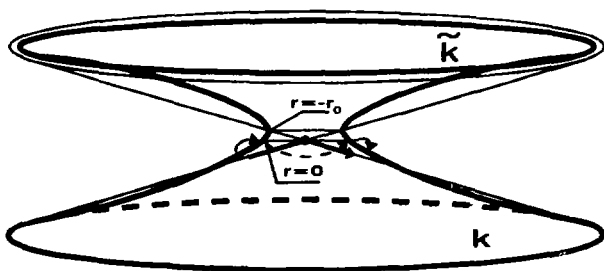
where

$$\tilde{\Lambda}_2 = \exp\left(-\frac{2\tilde{r}_0}{\tilde{k}}\right) \frac{\cosh \frac{\tilde{r} + \tilde{r}_0}{\tilde{k}}}{\cosh \frac{\tilde{r} - \tilde{r}_0}{\tilde{k}}}.$$

The constant - time slice of the solution is shown in fig. 5.

Now, we can see that our solution contains a traversible worm-hole [5] at  $r = -r_0$  connecting two infinite space - times  $r > -r_0$  and  $r < -r_0$ . It consists of two asymptotically Lobachevskian spaces. The scalar curvature takes different asymptotical values on these sheets. Moreover, while on the sheet with the biggest curvature we have attraction by the central source, but on the sheet with the lower curvature we have repulsion!

Finally, this solution seems to be interesting since it is spherically symmetric and free from singularity.



**Fig. 5.** The spatial section of the physical metric. The background metric is also shown. Continuous line in the background space corresponds to the discontinuity of the physical line at  $r = 0$

## References

- [1] Rosen N. *General Relativity and Flat Space*, Phys. Rev., 1940, v.57, p.147-153.
- [2] Rosen N. *Localization of Gravitational Energy*, Found. Phys., 1985, v.15, 997-1008.
- [3] Chernikov N.A. *The relativistic Kepler Problem in the Lobachevsky Space*, Acta Phys. Pol., 1993, v.B24, p.927-950.
- [4] Tentyukov M.N. *Gravitational Theory with Local Quadratic Lagrangian*, Hadronic Journal Supplement, 1993, v.8, p.51-79.
- [5] Morris M.S., Thorne K.S., Yurtsever U. *Wormholes, Time Machines, and the Weak Energy Condition*, Phys. Rev. Lett., 1988, v.61, p.1446-1449.

Received by Publishing Department  
on April 27, 1994.

# **SUBJECT CATEGORIES OF THE JINR PUBLICATIONS**

<b>Index</b>	<b>Subject</b>
1.	High energy experimental physics
2.	High energy theoretical physics
3.	Low energy experimental physics
4.	Low energy theoretical physics
5.	Mathematics
6.	Nuclear spectroscopy and radiochemistry
7.	Heavy ion physics
8.	Cryogenics
9.	Accelerators
10.	Automatization of data processing
11.	Computing mathematics and technique
12.	Chemistry
13.	Experimental techniques and methods
14.	Solid state physics. Liquids
15.	Experimental physics of nuclear reactions at low energies
16.	Health physics. Shieldings
17.	Theory of condensed matter
18.	Applied researches
19.	Biophysics



Принимается подписка на препринты, сообщения Объединенного института ядерных исследований и «Краткие сообщения ОИЯИ».

Установлена следующая стоимость подписки на 12 месяцев на издания ОИЯИ, включая пересылку, по отдельным тематическим категориям:

Индекс	Тематика	Цена подписки на год
1.	Экспериментальная физика высоких энергий	915 р.
2.	Теоретическая физика высоких энергий	2470 р.
3.	Экспериментальная нейтронная физика	365 р.
4.	Теоретическая физика низких энергий	735 р.
5.	Математика	460 р.
6.	Ядерная спектроскопия и радиохимия	275 р.
7.	Физика тяжелых ионов	185 р.
8.	Криогеника	185 р.
9.	Ускорители	460 р.
10.	Автоматизация обработки экспериментальных данных	560 р.
11.	Вычислительная математика и техника	560 р.
12.	Химия	90 р.
13.	Техника физического эксперимента	720 р.
14.	Исследования твердых тел и жидкостей ядерными методами	460 р.
15.	Экспериментальная физика ядерных реакций при низких энергиях	460 р.
16.	Дозиметрия и физика защиты	90 р.
17.	Теория конденсированного состояния	365 р.
18.	Использование результатов и методов фундаментальных физических исследований в смежных областях науки и техники	90 р.
19.	Биофизика	185 р.
	«Краткие сообщения ОИЯИ» (6 выпусков)	560 р.

Подписка может быть оформлена с любого месяца года.

По всем вопросам оформления подписки следует обращаться в издательский отдел ОИЯИ по адресу: 141980, г.Дубна, Московской области

Тентюков М.Н.

E2-94-153

"Кротовая нора" на фоне пространства Лобачевского

Исследуется точное сферически-симметричное решение уравнений биметрической теории гравитации. Фоновая метрика не является плоской; ее пространственные сечения представляют собой пространства Лобачевского с "космическим временем"  $c^2 dt^2$ . Всего имеется две ветви решения. Первая подобна решению Шварцшильда и переходит в него, если константу Лобачевского устремить к  $\infty$ , а вторая описывает проходимость "кротовую нору" и не имеет эйнштейновского предела.

Работа выполнена в Лаборатории теоретической физики им. Н.Н. Боголюбова ОИЯИ.

Препринт Объединенного института ядерных исследований. Дубна, 1994

Tentyukov M.N.

E2-94-153

Wormhole on the Lobachevsky Background

The exact spherical-symmetric static solution of Rosen-like equations of the bimetric theory is investigated. The background metric is not flat, but curved, with the Lobachevsky spatial sections and "cosmic time"  $c^2 dt^2$ . There are two branches of the solution. The first is similar to the Schwarzschild solution and turns to it when the Lobachevsky constant goes to  $\infty$ , while the second describes the traversible wormhole and has no Einstein's limit.

The investigation has been performed at the Bogoliubov Laboratory of Theoretical Physics, JINR.

Preprint of the Joint Institute for Nuclear Research. Dubna, 1994

Редактор Е.И.Хижняк. Макет Т.Е.Попеко

Подписано в печать 19.05.94

Формат 60×90/16. Офсетная печать. Уч.-изд.листов 0,53

Тираж 460. Заказ 47236. Цена 95 р.

Издательский отдел Объединенного института ядерных исследований  
Дубна Московской области