

Alpenglow

—

A Signature for Chameleons in Axion-Like Particle Search Experiments

M. Ahlers, A. Lindner, A. Ringwald, L. Schrempp, and C. Weniger

*Deutsches Elektronen-Synchrotron DESY,
Notkestrasse 85, D-22607 Hamburg, Germany*

Abstract

We point out that chameleon field theories might reveal themselves as an “afterglow” effect in axion-like particle search experiments due to chameleon-photon conversion in a magnetic field. We estimate the parameter space which is accessible by currently available technology and find that afterglow experiments could constrain this parameter space in a way complementary to gravitational and Casimir force experiments. In addition, one could reach photon-chameleon couplings which are beyond the sensitivity of common laser polarization experiments. We also sketch the idea of a Fabry-Pérot cavity with chameleons which could increase the experimental sensitivity significantly.

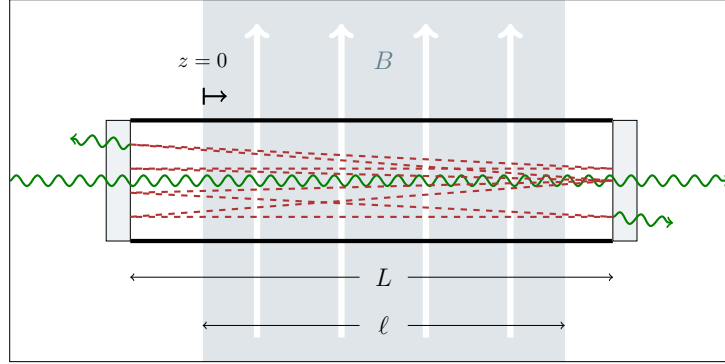
1 Introduction

Both cosmology as well as popular extensions of the standard model of particle physics are pointing to the possible existence of very weakly interacting very light spin-zero (axion-like) particles (ALPs) and fields. In fact, a plausible explanation for the apparent acceleration of the cosmic expansion rate of the universe is provided by the presence of a spatially homogeneous scalar field which is rolling down a very flat potential [1, 2, 3]. Remarkably, in string compactifications, there are many moduli fields which couple to known matter with gravitational strength.

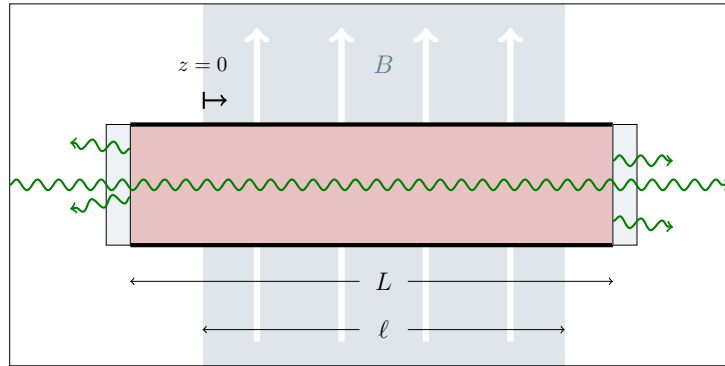
Interactions of very light scalar fields with ordinary matter are strongly constrained by the non-observation of “fifth force” effects leading to *e.g.* violations of the equivalence principle. Correspondingly, if such particles exist, the forces mediated by them should be either much weaker than gravity or short-ranged in the laboratory. The latter occurs in theories where the mass of the scalar field depends effectively on the local density of matter – in so-called chameleon field theories [4, 5, 6]. Depending on the non-linear field self-interactions and on the interactions with the ambient matter, the chameleon may have a large mass in regions of high density (like the earth), while it has a small mass in regions of low density (like interstellar space). Since such kind of particle is able to hide so well from observations and experiments, it has been called a “chameleon”.

Various phenomenological consequences of chameleon field theories have been discussed in the literature. Clearly, gravitational and other fifth force experiments are natural places where the effects of such particles can show up [7, 8, 9]. More recently, it has been emphasized [10, 11, 12] that chameleons may also be searched for in laser polarization experiments, such as BFRT [13], BMV [14], PVLAS [15, 16], OSQAR [17], and Q&A [18], which were originally planned for the laboratory search for axion-like particles based on the two photon couplings of the latter. In these experiments, polarized laser light is shone across a transverse magnetic field and changes in the polarization state are searched for. Similar to the case of standard ALPs, the real (virtual) production of chameleons would lead to an apparent rotation (ellipticity) of the laser photons. But for chameleons the ellipticity can be much larger than the rotation [12]. This effect arises because chameleons are trapped inside the vacuum pipes [10], due to their high effective mass in the walls. Correspondingly, another type of laser experiments – namely light-shining-through-a-wall experiments – are not sensitive to chameleons. In these experiments, such as ALPS [19, 20], BMV [14], GammeV [21], LIPSS [22], OSQAR [17] and PVLAS [23], laser light is shone onto a wall which separates the magnetic field into two regions and one searches for photons that might appear behind the wall due to ALP–photon conversion in the magnetic field. Clearly, chameleons do not reveal themselves in these kind of experiments, since they cannot pass through the wall.

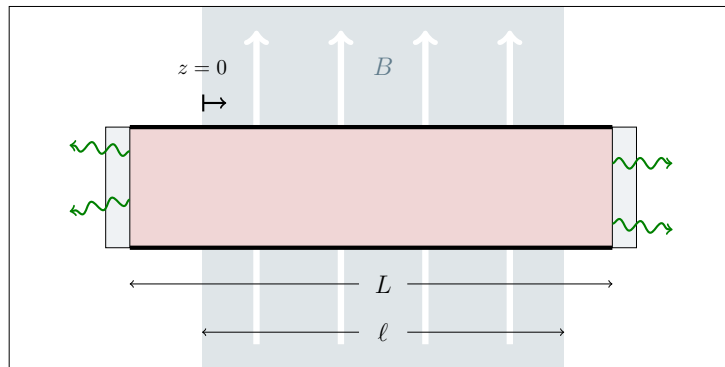
In this letter, we want to propose the search for a unique signature of chameleons in



(a)



(b)



(c)

Figure 1: Illustration of an afterglow experiment to search for chameleon particles. (a) Filling the vacuum tube by means of a laser beam with chameleons via photon-chameleon conversion in a magnetic field. (b) An isotropic chameleon gas forms. (c) Afterglow from chameleon-photon conversion in a magnetic field.

the above mentioned axion-like particle search experiments: an “afterglow” effect¹.

The basic idea is depicted in Fig. 1. In the beginning (a), a laser beam is shone through a vacuum cavity in a strong magnetic field. The end caps of the cavity are transparent to laser photons. Some of the photons are converted to chameleon particles whose mass m in the vacuum is smaller than the energy ω of the laser beam. However, both the matter density and thus also m are much higher within the end caps such that there $m \gg \omega$ holds. As a consequence, the chameleons are then reflected by these end caps and remain trapped inside the cavity [10, 12], which gets more and more filled (b), whereas the photons escape. After switching off the laser (c), one can search for afterglow photons, that emerge from the back-conversion of the trapped chameleon particles in the magnetic field.

The organization of the paper is as follows. Firstly, we introduce the basic idea and some properties of chameleon theories and derive the conversion probability between photons and chameleons from their equations of motion. Secondly, we consider in some detail the loading and unloading rate of vacuum cavities and estimate the parameter space, which is accessible by afterglow experiments, using the experimental parameters of the ALPS [19, 20] experiment. We also discuss the possibility of a coherent evolution of the chameleon wave, which would drastically increase the sensitivity of the experiment. Finally, we state our conclusions and give an outlook on open questions.

2 Chameleon Theory

Chameleon theories can be described as scalar field theories with a self-interaction potential $V(\phi)$ for the chameleon ϕ and a conformal coupling to matter. More precisely, the dynamics of a chameleon field in the presence of matter and electromagnetism are governed by the general action,

$$S = \int d^4x \sqrt{-g} \left(-\frac{M_{\text{Pl}}^2}{16\pi} R + \frac{1}{2}(\partial\phi)^2 - V(\phi) - \frac{e^{2\phi/M}}{4} F^2 \right) + \sum S_m^{(i)}(e^{2\phi/M_i} g_{\mu\nu}, \psi_m^{(i)}), \quad (2.1)$$

where $M_{\text{Pl}} = 1/\sqrt{G} \simeq 1.2 \cdot 10^{19}$ GeV is the Planck mass, g is the determinant of the metric $g_{\mu\nu}$, R is the Ricci-Scalar, and $F_{\mu\nu}$ denotes the electromagnetic field strength tensor. Furthermore, the chameleon couples conformally both to electromagnetism and to the various matter fields $\psi_m^{(i)}$ through the dependence of their matter actions $S_m^{(i)}$ on $e^{2\phi/M_i}$. For simplicity, in the following, we will assume the chameleon to exhibit a universal coupling to matter and to electromagnetism which implies $M_i = M$. As we will see later on, in order to expect detectable signatures of a chameleon theory in axion-like particle search experiments, one has to require $M_{\text{Pl}} \gg M$.

¹A similar proposal can be found in Ref. [24].

As can be deduced from varying the action [5], the dynamics of the chameleon field are governed by an effective potential $V_{\text{eff}}(\phi)$. In the presence of (non-relativistic) matter and external electric (\vec{E}) and magnetic (\vec{B}) fields, it takes the following form,

$$V_{\text{eff}}(\phi) = V(\phi) + \rho_{\text{eff}} e^{\phi/M}, \quad (2.2)$$

where

$$\rho_{\text{eff}} = \rho_{\text{matter}} - \frac{1}{2} \left(\vec{E}^2 - \vec{B}^2 \right). \quad (2.3)$$

In order to ensure that ϕ exhibits the characteristic environmental dependencies of a chameleon field, we require its self-interaction potential to be of a runaway form in the sense that

$$V'(\phi) < 0, \quad V''(\phi) > 0, \quad V'''(\phi) < 0, \quad (2.4)$$

with $V' = dV/d\phi$. Accordingly, in low matter density environments (like in outer space) the dynamics of ϕ are determined by its quintessence-like self-interaction potential. However, even though $V(\phi)$ is monotonically decreasing, for our exponential choice of the conformal coupling (cf. Eq. (2.1)) in over-dense regions the chameleon is stabilized in a minimum exerted by its effective potential V_{eff} . More precisely, according to Eqs. (2.2) and (2.4), the local effective density ρ_{eff} governs both the location of the effective minimum at $\phi = \phi_{\text{min}}$ where $V'_{\text{eff}}(\phi_{\text{min}}) = 0$ and the mass $m^2 = V''(\phi_{\text{min}})$ of the chameleon field, which grows with increasing matter density. To see this explicitly, for definiteness, we take a self-interaction potential of the form,

$$V(\phi) = \Lambda^4 e^{\Lambda^n/\phi^n} \approx \Lambda^4 + \frac{\Lambda^{n+4}}{\phi^n}, \quad (2.5)$$

where in the last equality and throughout this work we assume $\phi \gg \Lambda$ such that V reduces to a constant term plus a Ratra-Peebles inverse power law potential. This form of the potential has been shown not to be in conflict with current laboratory, solar system or cosmological experiments [4, 6] even in the strong coupling case, $M_{\text{Pl}} \gg M$ [8]. Note that in order for the chameleon to drive cosmic acceleration, one has to require $\Lambda \approx 2.3$ meV such that the Λ^4 term in Eq. (2.5) acts as an effective cosmological constant.

Since limits on any variation of fundamental constants of nature require $\phi/M \ll 1$ [8], we henceforth take $\exp(\phi/M) \approx 1 + \phi/M$ for the conformal matter coupling. Under these assumptions, Eq. (2.2) yields

$$V'_{\text{eff}}(\phi_{\text{min}}) = 0 = V'(\phi_{\text{min}}) + \frac{\rho_{\text{eff}}}{M}, \quad (2.6)$$

which defines

$$\phi_{\text{min}} = \left(\frac{nM\Lambda^{n+4}}{\rho_{\text{eff}}} \right)^{1/(1+n)}. \quad (2.7)$$

Thus, the mass of the scalar field follows from,

$$m^2 = \left(\frac{n(n+1)\Lambda^{n+4}}{\phi_{\text{min}}^{n+2}} \right) = n(n+1)\Lambda^2 \left(\frac{\rho_{\text{eff}}}{nM\Lambda^3} \right)^{(n+2)/(n+1)}. \quad (2.8)$$

Accordingly, we note that the chameleon mass in an axion-like particle search experiment depends on the details of the experimental set-up. Namely, it is determined by the effective density ρ_{eff} . Furthermore, it depends on the size of the cavity in the following sense. If the radius of the cavity r is too small, $r \lesssim 2/m(\phi_{\text{min}})$, the chameleon field will not relax to ϕ_{min} and thus its mass turns out to only depend on the geometry of the set-up [12], bounded from below like

$$m \gtrsim \frac{2\sqrt{n+1}}{r} = 2.3 \cdot 10^{-5} \text{ eV} \sqrt{n+1} \left(\frac{1.7 \text{ cm}}{r} \right). \quad (2.9)$$

3 Afterglow Experiment

The chameleon-photon interaction in a magnetic field can be described as a two-level systems as in Ref. [25] (see also Refs. [12, 24]). For the discussion of coherent chameleon interactions with the laser following in the next section it is convenient to repeat the basic steps of the calculation.

We consider a linearly polarized laser beam propagating perpendicular to a magnetic field \vec{B} oriented orthogonal to the polarization vector of the laser. The equations of motion for right-moving ($-$) and left-moving ($+$) plane waves $(A, \phi)^T$ are given as

$$\left[\omega \mp i\partial_z - \begin{pmatrix} 0 & \mp \Delta_M \\ \mp \Delta_M & \Delta_\phi \end{pmatrix} \right] \begin{pmatrix} A \\ \phi \end{pmatrix} = 0 \quad (3.1)$$

with the inverse oscillations lengths $\Delta_\phi = m^2/2\omega$ and $\Delta_M = B/2M$. These equations can be diagonalized by a rotation

$$\begin{pmatrix} A' \\ \phi' \end{pmatrix} = \begin{pmatrix} \cos \varphi & \pm \sin \varphi \\ \mp \sin \varphi & \cos \varphi \end{pmatrix} \begin{pmatrix} A \\ \phi \end{pmatrix} \equiv \mathcal{Q}(\pm\varphi) \begin{pmatrix} A \\ \phi \end{pmatrix} \quad (3.2)$$

with $\frac{1}{2} \tan 2\varphi = \Delta_M/\Delta_\phi$. The rotated fields have the solution

$$\begin{pmatrix} A'(z) \\ \phi'(z) \end{pmatrix} = \begin{pmatrix} e^{\mp ik_- z} & 0 \\ 0 & e^{\mp ik_+ z} \end{pmatrix} \begin{pmatrix} A'(0) \\ \phi'(0) \end{pmatrix} \equiv \mathcal{M}'(\pm z) \begin{pmatrix} A'(0) \\ \phi'(0) \end{pmatrix} \quad (3.3)$$

with $k_\pm = \omega - \frac{\Delta_\phi}{2}(1 \pm \sec 2\varphi)$. Note that for small mixing φ the state A' is photon-like with $k_- \approx \omega$ whereas ϕ' propagates with $k_+ \approx \omega - \Delta_\phi$. Hence, in the small mixing case, the coherence length of the chameleon-photon system will be $\ell_{\text{coh}} = \pi/\Delta_\phi$. The transition probability $P_{\gamma \rightarrow \phi}(\ell, B) = P_{\phi \rightarrow \gamma}(\ell, B) = 1 - P_{\phi \rightarrow \phi}(\ell, B)$ is given by

$$P_{\gamma \rightarrow \phi}(\ell, B) = |(\mathcal{Q}^T(\varphi)\mathcal{M}'(\ell, B)\mathcal{Q}(\varphi))_{21}|^2 = 4 \left(\frac{B\omega}{Mm^2} \right)^2 \sin^2 \left(\frac{\ell m^2}{4\omega} \right) + \mathcal{O}(\varphi^4). \quad (3.4)$$

As noted in Ref. [10, 12], the walls of a vacuum tube can act as mirrors for chameleon particles if their energy is smaller than their effective mass in the cavity wall. Since this

is the case in common laser experiments with vacuum tubes, chameleon particles are trapped in the cavity once they are produced and can only escape via back-transition to photons. In the following we will treat the chameleons trapped inside the tube as a “gas”, neglecting interference effects with the incoming laser field.

3.1 Chameleon Generation

As a first step, consider a set-up (similar to the one in Fig. 1) where a linearly polarized laser beam with power \mathcal{P}_γ and frequency ω enters a vacuum between two (infinitely extended) windows separated by a distance ℓ . We assume that a magnetic field B is oriented parallel to the window surfaces and orthogonal to the polarization vector of the laser beam. For simplicity, we also assume that the magnetic field region is confined to the vacuum between the windows. The laser beam enters through one of the windows with an angle θ with respect to the window surfaces.

After switching on the laser beam, the number of laser photons between the windows is $\ell' I_\gamma$, where the photon current I_γ is defined as $I_\gamma = \mathcal{P}_\gamma/\omega$, and $\ell' = \ell/\sin\theta$ is the length of the laser beam between the windows. A fraction of $P_{\gamma\rightarrow\phi}(\ell', B')$ laser photons transforms to chameleon particles where $B' = B \sin\theta$. These chameleon particles are then reflected back and forth between the windows and become trapped whereas the photons escape. At each reflection, a fraction of $P_{\phi\rightarrow\gamma}(\ell', B')$ chameleons are lost due to back transition to photons. Taking N reflections into account, the total number of chameleons stored in the cavity is then given by

$$N_\phi = \ell' P_{\gamma\rightarrow\phi} \sum_{k=0}^{N-1} P_{\phi\rightarrow\phi}^k I_\gamma = \ell' P_{\gamma\rightarrow\phi} \left(\frac{1 - P_{\phi\rightarrow\phi}^N}{1 - P_{\phi\rightarrow\phi}} \right) I_\gamma, \quad (3.5)$$

where $P_{\phi\rightarrow\phi} = 1 - P_{\phi\rightarrow\gamma}$ and we approximate the velocity of the chameleons by the speed of light. In the limit of large N , it follows that

$$N_\phi = \ell' (1 - P_{\phi\rightarrow\phi}^N) I_\gamma \xrightarrow{N\rightarrow\infty} \ell' I_\gamma, \quad (3.6)$$

i.e. the total number of chameleon particles equals the number of photons inside the cavity, $\ell' I_\gamma$.

Identifying $t = \ell' N$, the rate Γ to load and unload the cavity with chameleons is given by

$$\Gamma = -\frac{\ln P_{\phi\rightarrow\phi}}{\ell'} = -\frac{\ln(1 - P_{\phi\rightarrow\gamma})}{\ell'} \simeq \frac{P_{\phi\rightarrow\gamma}}{\ell'} \simeq \frac{4}{\ell'} \left(\frac{\omega B'}{M m^2} \right)^2 \sin^2 \left(\frac{\ell' m^2}{4\omega} \right), \quad (3.7)$$

which results in an (un-)loading time

$$\tau_{\text{load}} \equiv \frac{1}{\Gamma} \simeq \frac{4M^2}{B'^2 \ell'} \simeq 111 \text{ s} \left(\frac{M}{10^6 \text{ GeV}} \right)^2 \left(\frac{5.4 \text{ T}}{B'} \right)^2 \left(\frac{4.2 \text{ m}}{\ell'} \right), \quad (3.8)$$

for $m \lesssim 2\sqrt{\omega/\ell'} = 6.6 \cdot 10^{-4} \text{ eV} \sqrt{\omega/2.3 \text{ eV}} \sqrt{4.2 \text{ m}/\ell'}$. For later convenience, we define the *characteristic length scale* R of the cavity as

$$R \equiv \Gamma \cdot \frac{4M^2}{B^2}. \quad (3.9)$$

For small masses m , it is given by $R \simeq \ell \sin \theta$ in the above example. For large masses, R strongly oscillates between zero and $R = 4(B')^2 \omega^2 / M^2 m^4 \ell'$ as a function of ℓ .

To determine R for a more realistic set-up, note that chameleons become reflected by the cavity walls approximately $10^8 (\ell/1 \text{ m})^{-1}$ times per second. If the walls of the cavity are not aligned to be exactly parallel to each other (with angular deviations of the order of $\Delta\delta$), trapped particles will become distributed isotropically after some time $t \simeq \mathcal{O}(\ell/\Delta\delta)$. In realistic cases, especially if no extra effort is put into the adjustment of the cavity walls, t is well below $\sim \mathcal{O}(1 \text{ s})$. Since the characteristic time scale of an afterglow experiment will turn out to be orders of magnitude larger, it seems to be safe to assume that the chameleons form an isotropic and homogeneous gas inside the cavity.

In such a set-up, the number of chameleons in the cavity is governed by a simple rate equation:

$$\frac{dN_\phi}{dt} = P_{\gamma \rightarrow \phi}(\ell, B) I_\gamma - \Gamma N_\phi. \quad (3.10)$$

The first term on the right-hand side describes the loading of the cavity, where ℓ now is the length of the laser beam inside the magnetic field in the cavity (see Fig. 1). The second term describes the loss of chameleons due to back-conversion to photons. The corresponding (un-)loading rate Γ is given by

$$\Gamma = \frac{1}{4\pi V} \int dA \int_{2\pi} d\Omega \cos \theta_S P_{\phi \rightarrow \gamma}(\ell'(x, e_\Omega), B \cdot \sin \theta), \quad (3.11)$$

where V is the volume of the cavity, $\int dA$ denotes the integration over the cavity surface, $\int d\Omega$ the integration over the half sphere in which photons can be emitted from each point of the surface, $\ell'(x, e_\Omega)$ is the distance a particle at surface point x and orientation e_Ω has traveled inside the magnetic field since its last reflection, θ denotes the angle between e_Ω and the direction of the magnetic field and θ_S denotes the angle between e_Ω and the surface normal.

In this definition we have assumed that the cavity is completely transparent to photons, and that the chameleon-photon wave is projected onto its chameleon (or photon) part at each reflection. Furthermore, we have neglected all interactions between chameleon particles and assumed that they can propagate freely in the cavity without thermalization².

²Since the expansion of the effective potential $V_{\text{eff}}(\phi)$ (see Eq. (2.2)) around its minimum contains interaction terms of all powers of ϕ , processes like $\phi\phi \rightarrow n\phi$ are allowed for all n even at tree level. These chameleon creation and annihilation cross sections might become very large for large energies and thus lead to thermalization or to a breakdown of the particle description due to strong coupling for certain values of M and Λ . In this letter we only consider the idealized case without thermalization and postpone the further investigation of these problems to a forthcoming publication [26].

Since the energy of chameleon particles which are produced by laser beams corresponds to temperatures of the order of $T \sim \mathcal{O}(10^4\text{K})$, one might fear that they quickly lose their energy to the cavity walls and take on the temperature of the surrounding. However, this process seems to be negligible³. Finally, the description of chameleons as particles with constant mass certainly breaks down for parameters (M, Λ) for which Eq. (2.8) yields masses below $\sim 2/r$. In these cases, the real chameleon mass strongly depends on the position in the cavity and is constrained from below as in Eq. (2.9). Since large parts of the corresponding parameter space are already excluded by other experiments (at least for $n = 1$, see region above the ALPS line Fig. 2), and for simplicity, we exclude this region from our considerations.

For the case of a tube with length L , radius $r \ll L$ and a magnetic field of length ℓ (see Fig. 1), one obtains

$$\Gamma = \frac{B^2}{4M^2} \cdot \begin{cases} \frac{2r\ell}{L} \left(1 - \frac{r}{2\ell} \ln \frac{\ell}{r}\right), & \text{for } m^2 \lesssim 4\omega/\ell, \\ \frac{2r\ell}{L} \left(1 - \frac{rm^2}{8\omega} \ln \frac{4\omega}{rm^2}\right), & \text{for } 4\omega/\ell \lesssim m^2 \ll 4\omega/r, \\ \frac{5}{2} \frac{\ell\omega^2}{Lrm^4}, & \text{for } m^2 \gg 4\omega/r. \end{cases} \quad (3.12)$$

From the previous equation and Eq. (3.9) the characteristic length scale R of the system can be directly read off. Note, that if $m^2 \lesssim 4\omega/\ell$, Γ is independent of the chameleon mass, while, for $m^2 \gg \omega/r$, Γ decreases like $\sim m^{-4}$.

As we stated above, the formulae for Γ only hold, if the chameleon-photon wave is projected onto its chameleon or photon part at each reflection. This is certainly the case if the walls are transparent to photons, since the wave packets of the combined chameleon-photon system become separated after the reflection. Due to interaction with the environment, this spatial separation acts like a projection onto either the photon or chameleon part. However, this measurement-like process might even occur if photons *are* reflected by the cavity walls (*e.g.* if the cavity is a metallic tube where only the end caps are transparent to photons). This is due to the fact, that the reflection properties of chameleons and photons are in general quite different [12], so that the corresponding wave-packets may become separated. This separation again acts like a measurement and leads to a projection onto either the photon or the chameleon part.

³ Chameleons in our experiment are expected to be much hotter than the cavity walls since the laser frequency $\omega = 2.3\text{eV}$ corresponds to a temperature of $2.7 \cdot 10^4\text{K}$. To estimate the energy loss of the chameleons through elastic scattering off the cavity walls, note that the maximal energy transfer from a chameleon particle with energy ω on a part of the wall with mass M is $\Delta\omega \simeq 2\omega^2/M$. M may be approximated by the mass of a half sphere with diameter of the wavelength of the chameleon $\lambda = 532\text{nm}$ and depends on the mass density of the wall, ρ_{wall} . From that we obtain a cooling time of $t_{\text{cooling}} = 2.4 \cdot 10^8\text{s} (\rho_{\text{wall}}/1\text{g cm}^{-3}) (R/1\text{cm})$, where R denotes the average path length of a chameleon between two reflections. Since $R \gtrsim 1\text{cm}$ and $\rho_{\text{wall}} \gtrsim 1\text{g cm}^{-3}$, we conclude that this effect is negligible.

3.2 Photon Regeneration

We now turn the determination of the results which can be expected in an afterglow experiment. Switching on the laser for a time Δt fills the cavity with

$$N_\phi^0(\Delta t) = \frac{(1 - e^{-\Gamma\Delta t})}{\Gamma} P_{\gamma \rightarrow \phi}(\ell) I_\gamma \quad (3.13)$$

chameleon particles. Assuming, that a fraction of f regenerated photons hit the detector, the number of detected photons per second immediately after switching off the laser (at time $t = 0$) is

$$I_\gamma^{\text{det}}(t = 0) = f P_{\gamma \rightarrow \phi}(\ell) I_\gamma (1 - e^{-\Gamma\Delta t}) = f P_{\gamma \rightarrow \phi}(\ell) I_\gamma \cdot \begin{cases} \Gamma\Delta t, & \text{for } \Gamma\Delta t \lesssim 1, \\ 1, & \text{for } \Gamma\Delta t \gtrsim 1. \end{cases} \quad (3.14)$$

The current of detected photons decreases with measurement time like $e^{-\Gamma t}$. Hence, the number of detected photons for a measurement time t is

$$N_\gamma^{\text{det}}(t) = f P_{\gamma \rightarrow \phi}(\ell) I_\gamma (1 - e^{-\Gamma\Delta t}) \frac{(1 - e^{-\Gamma t})}{\Gamma}. \quad (3.15)$$

If the detector is sensitive down to N_γ^{sen} , the experiment can in principle reach parameters (M, Λ) for which $N_\gamma^{\text{det}}(t) \gtrsim N_\gamma^{\text{sen}}$. This region is further constrained by the requirement, that a chameleon inside the cavity cannot have a mass smaller than $m \sim 2/r$ (see above).

We now turn to an estimate of the coupling parameter M accessible with a set-up similar to the ALPS phase zero experiment [20]. Using the corresponding experimental parameters ($\omega = 2.3 \text{ eV}$, $\ell = 4.2 \text{ m}$, $L = 6.5 \text{ m}$, $r = 1.7 \text{ cm}$, and $B = 5.4 \text{ T}$), we can determine the (un-)loading rate Γ from Eq. (3.12) and obtain

$$\Gamma \simeq 4.6 \cdot 10^{-5} \text{ s}^{-1} \left(\frac{10^6 \text{ GeV}}{M} \right)^2, \quad \text{for } m \lesssim 2\sqrt{\omega/\ell} = 6.6 \cdot 10^{-4} \text{ eV}. \quad (3.16)$$

In the same mass limit, the conversion probability that enters Eq. (3.14) is given by

$$P_{\gamma \rightarrow \phi}(\ell, B) = 1.3 \cdot 10^{-10} \left(\frac{10^6 \text{ GeV}}{M} \right)^2. \quad (3.17)$$

In ALPS phase zero the laser has a power $\mathcal{P}_\gamma = 3 \text{ W}$, corresponding to a photon current of $I_\gamma \simeq 8.1 \cdot 10^{18} \text{ s}^{-1}$. The exploited CCD camera is sensitive down to $N_\gamma^{\text{sen}} = 5 \cdot 10^5$. For small masses, an infinite loading time Δt , and $f \simeq 1/2$, the experiment could reach in principle coupling parameters M up to $M \simeq 10^7 \text{ GeV}$. This value scales with the square root of the laser power, stronger lasers easily reach $M \gtrsim 10^8 \text{ GeV}$. However, in these cases the loading time becomes very large, since it scales with $\sim M^2$ (cf. Eq. (3.16)). Hence, the sensitivity of afterglow experiments is mainly constrained by the finite loading time of an experiment.

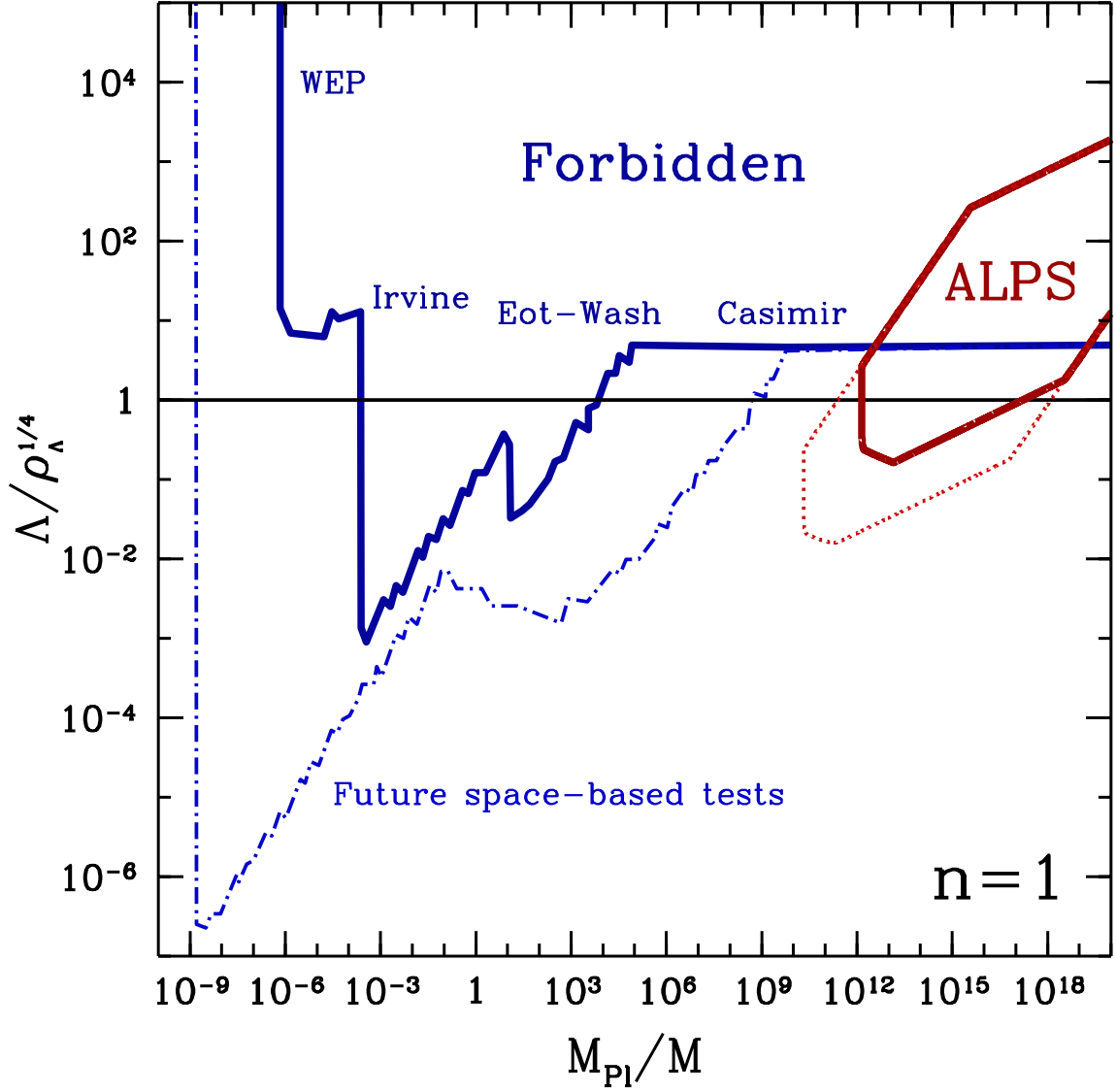


Figure 2: Combined constraints on $n = 1$ chameleon theories in terms of the potential parameters Λ , in units of the energy scale $\rho_\Lambda^{1/4} \simeq 0.002 \text{ eV} \simeq (0.1 \text{ mm})^{-1}$ corresponding to the energy density of dark energy, versus the inverse coupling scale $1/M$, in units of $M_{\text{Pl}} \simeq 1.2 \cdot 10^{19} \text{ GeV}$. Current constraints (blue solid line; from Ref. [8]) arise from searches for violations of the weak equivalence principle (WEP), from searches for deviations from the $1/r^2$ law of the gravitational force (Irvine and Eöt-Wash), and from bounds on the strength of any fifth force from measurements of the Casimir force. Future space-based tests will improve the current limits to the one shown as a light-blue dotted dashed line. A search for an afterglow due to chameleon-photon reconversion at ALPS phase zero will be sensitive to the region indicated by the red solid line, corresponding to a loading and measurement time of $\Delta t = t = 100 \text{ s}$. The red dotted line corresponds to the academic case $\Delta t = 1 \text{ y}$ and $t = 1 \text{ h}$.

Let us now consider also the sensitivity to the parameter Λ in the self-interaction potential (2.5) of the chameleon which enters here through the chameleon mass (2.8). The residual gas density in the vacuum tube of the ALPS experiment is $\rho_{\text{gas}} \simeq 2 \cdot 10^{-14} \text{ g cm}^{-3}$. Together with the magnetic field this yields an effective energy density of $\rho \simeq 1.3 \cdot 10^{-13} \text{ g cm}^{-3}$. From this we can determine the parameter region, which is accessible with the ALPS phase zero set-up. In Figure 2, we have displayed two cases: the red solid line corresponds to a loading and measurement time of $\Delta t = t = 100 \text{ s}$, while the red dotted line shows the academic case $\Delta t = 1 \text{ y}$ and $t = 1 \text{ h}$. Evidently, already in the ALPS phase zero set-up which is not tuned for chameleon afterglow searches, one can probe a so far inaccessible region of the parameter space of chameleon field theories.

4 Chameleon Cavity à la Fabry-Pérot

We have seen, that in the case of a “chameleon gas” the afterglow rate of photons is limited to $I_\gamma(t = 0) < P_{\gamma \rightarrow \phi} I_\gamma$ (cf. Eq. (3.14)). We will show in this section that, in principle, interference effects of the chameleon wave with the laser can increase the rate of regenerated photons and the experimental sensitivity. Ignoring the experimental problem of how to stabilize a chameleon wave in a Fabry-Pérot cavity for more than about 100 seconds, we will show that coherent interactions might increase the afterglow rate up to the laser intensity I_γ . In the following we will derive the amplitude of the right-moving chameleon plane wave taking into account contributions from preceding reflections.

Initially, as we switch on the laser beam, we assume the system to be in a pure right-moving photon state $\psi_0 = (1, 0)^T$ at the entrance window at $z = 0$ normalized to the laser amplitude. At the far-side window at position $z = \ell$ the state has evolved by $\mathcal{Q}^T(\varphi)\mathcal{M}'(\ell)\mathcal{Q}(\varphi) \equiv \mathcal{M}_R(\ell)$ (see Sect. 3). At the window the photon wave escapes and the chameleons are reflected back into the cavity. Due to reflection properties and propagation outside the magnetic field (see Fig. 1a) the chameleon field will pick up a phase δ_1 which is in general complex⁴. The two-level state is hence projected after reflection by $R_1 = \text{diag}(0, e^{i\delta_1})$ and generates a left-propagating chameleon wave. Reaching the near-side mirror this state has further evolved by $\mathcal{Q}^T(-\varphi)\mathcal{M}'(\ell)\mathcal{Q}(-\varphi) \equiv \mathcal{M}_L(\ell)$ and is projected into a chameleon state by $R_2 = \text{diag}(0, e^{i\delta_2})$. In summary, after one cycle the system has evolved into a state

$$R_2\mathcal{M}_L(\ell)R_1\mathcal{M}_R(\ell)\psi_0 \equiv \mathcal{C}\psi_0. \quad (4.1)$$

⁴Sign flips of the chameleon wave are also compensated by this phase.

The matrix \mathcal{C} has the following form to leading order in φ

$$\begin{aligned} \mathcal{C}_{11} &= \mathcal{C}_{12} = 0, \\ \mathcal{C}_{21} &= e^{i\delta} \left[-2 \sin^2 \left(\frac{\ell m^2}{4\omega} \right) \varphi - i \sin \left(\frac{\ell m^2}{2\omega} \right) \varphi + \mathcal{O}(\varphi^3) \right], \\ \mathcal{C}_{22} &= e^{i\delta} \left[1 - 4 \sin^2 \left(\frac{\ell m^2}{4\omega} \right) \varphi^2 + 2i \left(\frac{\ell m^2}{2\omega} - \sin \left(\frac{\ell m^2}{2\omega} \right) \right) \varphi^2 + \mathcal{O}(\varphi^4) \right], \end{aligned}$$

with a common phase $\delta = \delta_1 + \delta_2 - 2\ell(\omega - \Delta_\phi)$. The real and imaginary parts of \mathcal{C}_{22} (up to the overall phase) are the familiar contributions in the photon-axion system, resulting in a rotation and ellipticity of the laser polarization with respect to the magnetic field. Here, however, the role of the axion and photon is interchanged since only the former is reflected. From Eqs. (3.4) and (4.1) we can derive the relations $|\mathcal{C}_{22}| = P_{\phi \rightarrow \phi}$ and $|\mathcal{C}_{21}|^2 = P_{\phi \rightarrow \phi} P_{\gamma \rightarrow \phi}$, which will become useful in the following.

After the first cycle the right-moving two-level system receives a new contribution from the un-propagated laser light $(1, 0)^T$. Hence, for the second cycle we have to evolve $(\mathcal{C} + \mathbf{1})\psi_0$ with \mathcal{C} and so on. After N cycles we arrive at a right-moving state

$$\psi_N = \sum_{k=0}^N \mathcal{C}^k \psi_0 = \left(1, \mathcal{C}_{21} \frac{1 - \mathcal{C}_{22}^N}{1 - \mathcal{C}_{22}} \right)^T \quad (\mathcal{C}^0 \equiv \mathbf{1}). \quad (4.2)$$

The geometric series converges for $N \rightarrow \infty$ since $|\mathcal{C}_{22}| < 1$ and results in the asymptotic state

$$\psi_\infty = \left(1, \frac{\mathcal{C}_{21}}{1 - \mathcal{C}_{22}} \right)^T = (1, \phi_\infty)^T. \quad (4.3)$$

The amplitude of the right-moving chameleon wave at $z = 0$ after N previous cycles is given as

$$|\phi_N|^2 = \left| \mathcal{C}_{21} \frac{1 - \mathcal{C}_{22}^N}{1 - \mathcal{C}_{22}} \right|^2 = |\phi_\infty|^2 \cdot |1 - \mathcal{C}_{22}^N|^2. \quad (4.4)$$

Since $1 - |\mathcal{C}_{22}|^N \leq |1 - \mathcal{C}_{22}^N| \leq 1 + |\mathcal{C}_{22}|^N$ the oscillation $|\mathcal{C}_{22}|^N$ of the squared amplitude around its asymptotic value is damped according to $|\mathcal{C}_{22}|^N = e^{-t\Gamma_{\text{load}}^{\text{coh}}}$ with

$$\Gamma_{\text{load}}^{\text{coh}} = -\frac{\ln |\mathcal{C}_{22}|}{2\ell} = -\frac{\ln P_{\phi \rightarrow \phi}}{2\ell} = -\frac{\ln (1 - P_{\gamma \rightarrow \phi})}{2\ell} \simeq \frac{P_{\gamma \rightarrow \phi}}{2\ell}. \quad (4.5)$$

Figure 3 shows the chameleon amplitude for two different set-ups, where we use for illustration an (unacceptably) large chameleon coupling corresponding to $M = 100$ GeV. The configuration in the upper panel has a strong oscillation with cycles N caused by the phase of \mathcal{C}_{22} . In general, this leads to a suppression of the chameleon amplitude at $z = 0$. The oscillation is reduced in the resonant case, *i.e.* $\mathcal{C}_{22} \simeq |\mathcal{C}_{22}|$, which corresponds to $\delta \simeq 2\pi\mathbb{Z}$ and $\ell\Delta_\phi\varphi^2 \ll 1$. In the case $\ell\Delta_\phi \ll 1$, *i.e.* $\ell \ll \ell_{\text{coh}}$, we arrive at an asymptotic amplitude of

$$|\phi_N|^2 \simeq \frac{P_{\phi \rightarrow \phi}}{P_{\gamma \rightarrow \phi}} (1 - P_{\phi \rightarrow \phi}^N)^2 \xrightarrow{N \rightarrow \infty} \frac{P_{\phi \rightarrow \phi}}{P_{\gamma \rightarrow \phi}} \simeq \frac{1}{P_{\gamma \rightarrow \phi}}. \quad (4.6)$$

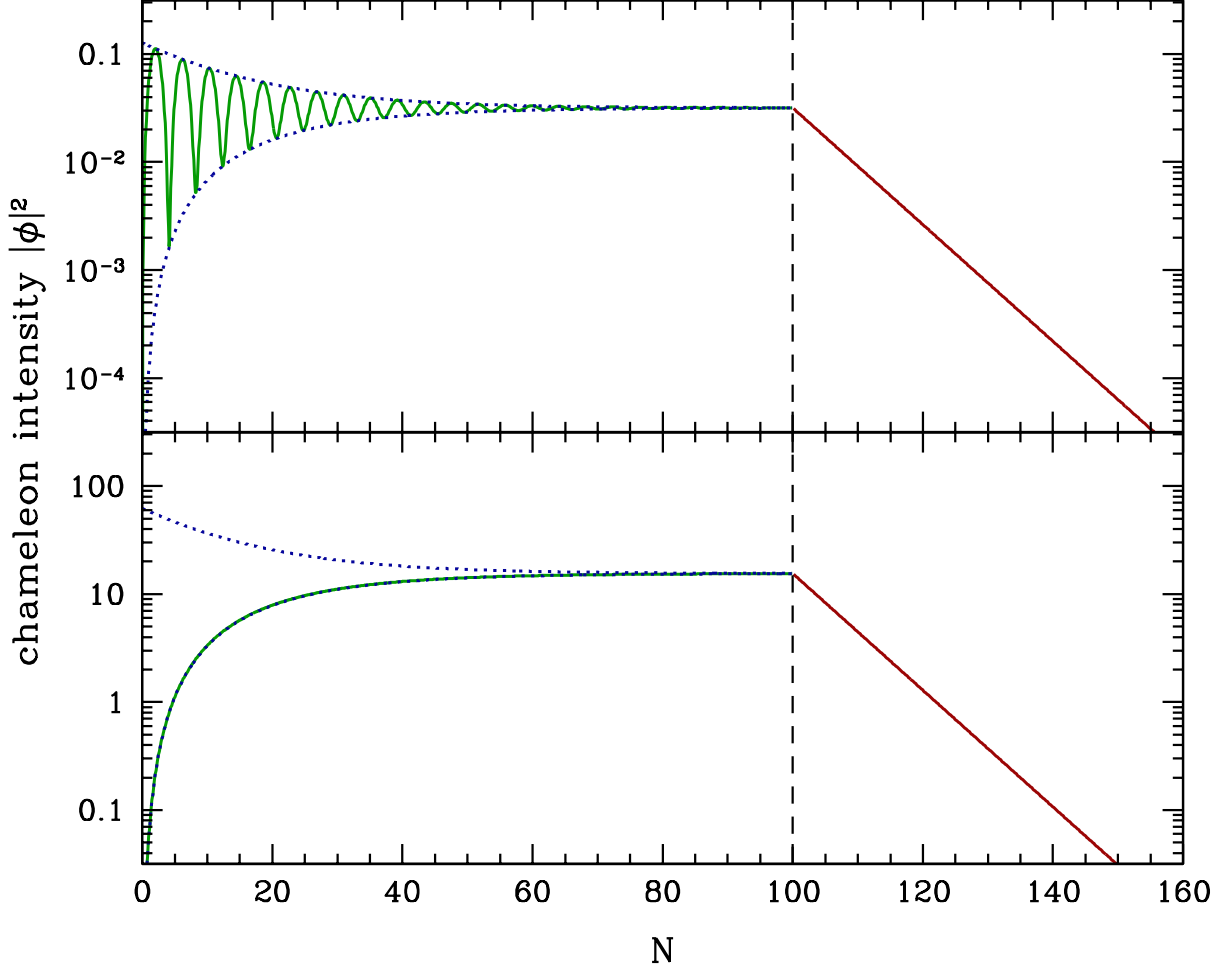


Figure 3: Coherent evolution of the chameleon amplitude with number of cycles N . For illustration, we took $M = 100$ GeV, $m = 10 \mu\text{eV}$, $\ell = 10$ m, $B = 5$ T and $\omega = 1$ eV. The upper panel shows the case $\delta_1 + \delta_2 = 0$ and a rapid oscillation. For the lower panel we chose $\delta = 0$, such that the chameleon amplitudes add up resonantly. In this case the asymptotic amplitude is $|\phi_\infty| \sim 1/P_{\gamma \rightarrow \phi}$. Also shown is the envelope $|\phi_\infty|^2 \cdot (1 \pm e^{-t\Gamma_{\text{load}}})^2$ as a dotted line. After $N = 100$ cycles the laser is switched off (marked as a dashed line) and the chameleon amplitude decays exponentially. Note that we use different ordinates in both panels.

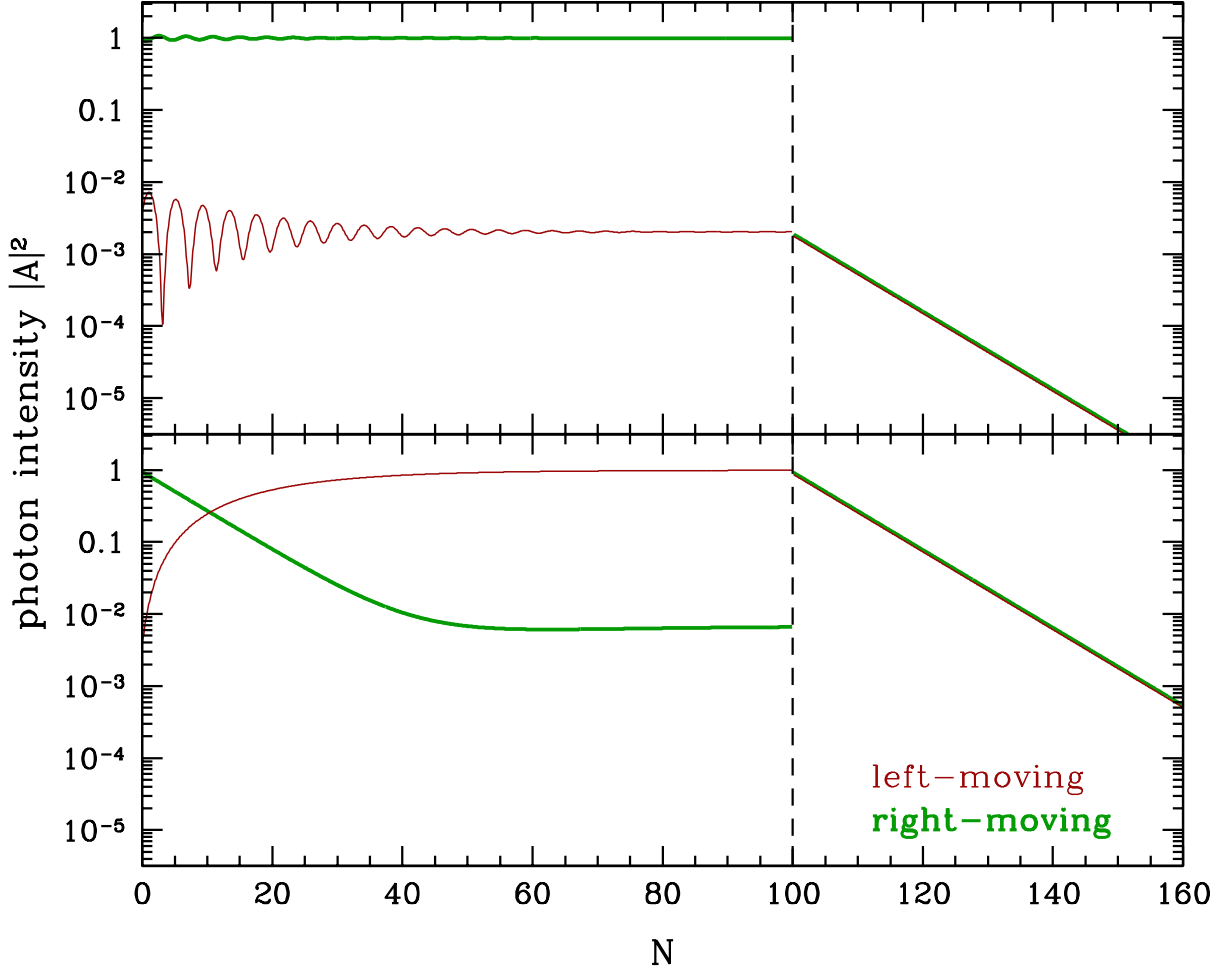


Figure 4: Coherent evolution of the photon amplitude with number of cycles N for the benchmark points of Fig. (3). We show the intensity of the right-moving (left-moving) photons transmitted at $z = \ell$ ($z = 0$) from the cavity as a thick green (thin red) line. In the resonant case (lower panel) the cavity acts as a mirror: The amplitude of right-moving photons is suppressed, whereas the left-moving photons reach the laser intensity. Again, after $N = 100$ cycles the laser is switched off and photons are emitted with exponentially decaying intensities to both sides. In the resonant case the intensity of the beam reaches the laser intensity.

Such a situation is shown in the lower panel of Fig. 3 with the same experimental and model parameters used in the upper panel.

Once the “cavity” is filled with chameleons we switch off the laser field to search for photons regenerated in the magnetic field. For a chameleon state $\psi_\phi = (0, \phi)^T$ we have per cycle:

$$\mathcal{C}\psi_\phi = \mathcal{C}_{22}\psi_\phi. \quad (4.7)$$

Per cycle $\Delta t \simeq 2\ell$ ($m \ll \omega$), the amplitude of the chameleon beam at $z = 0$ decreases as

$$\Delta \dot{N}_\phi = (1 - |\mathcal{C}_{22}|^2) \dot{N}_\phi \quad (4.8)$$

This defines an *unloading* rate $\Gamma_{\text{unload}}^{\text{coh}}$ as

$$\Gamma_{\text{unload}}^{\text{coh}} = \frac{1 - |\mathcal{C}_{22}|^2}{2\ell} = \frac{1 - P_{\phi \rightarrow \phi}^2}{2\ell} \simeq \frac{P_{\gamma \rightarrow \phi}}{\ell}. \quad (4.9)$$

Note that to leading order $\Gamma_{\text{unload}}^{\text{coh}} \simeq 2\Gamma_{\text{load}}^{\text{coh}}$, in contrast to the incoherent case, where there is only one rate for loading and unloading: The loading of the cavity takes twice the time as in the case of the gas.

The photon flux out of the cavity in both configurations is shown in Fig. 4. In the upper panel, the *off-resonant* case, the photon flow is dominated by the laser light and drops by several orders of magnitude after switching off the laser. The situation changes completely in the *resonant* case shown in the lower panel. Here, the cavity acts as a mirror: in the stationary limit, the laser light is almost completely reflected into left-moving waves. After we have switched off the laser the photons regenerated by the chameleons have the intensity of the laser light.

Note that the larger the final chameleon amplitude ($\propto P_{\gamma \rightarrow \phi}^{-1}$) gets the longer it takes ($\propto P_{\gamma \rightarrow \phi}^{-1}$) to reach it. In a realistic experiment we can only expect a limited number of cycles $N \sim \Delta t/2\ell$ for the coherent building up of the amplitude. In this case the amplitude will have reached a level

$$|\phi_N|^2 \simeq \frac{P_{\phi \rightarrow \phi}}{P_{\gamma \rightarrow \phi}} (1 - P_{\phi \rightarrow \phi}^N)^2 \xrightarrow{P_{\gamma \rightarrow \phi} \ll 1} N^2 P_{\gamma \rightarrow \phi} \simeq \left(\frac{\Delta t}{2\ell}\right)^2 P_{\gamma \rightarrow \phi}. \quad (4.10)$$

The detected afterglow rate of photons at one window is then

$$I_\gamma^{\text{det}}(t = 0) \simeq f \left(\frac{\Delta t}{2\ell}\right)^2 P_{\gamma \rightarrow \phi}^2 I_\gamma, \quad (4.11)$$

which is about a factor $\Delta t/(4\ell)$ larger than in the case of the chameleon gas (see Eq. (3.14)).

So far, we have left aside the experimental problem of a stabilization of the chameleon Fabry-Pérot cavity. Considering the lower panel of Fig. 4 one notices that the optical reflectivity increases in the resonant case. This damping of the laser amplitude might be used as a feedback signal for an active stabilization in an experiment. However, an actual realization of this concept is beyond the scope of this paper.

5 Conclusions

In this paper we have proposed a hitherto unnoted signature of chameleon field theories — an afterglow effect — which could be easily exploited in conventional axion-like particle search experiments.

In strong magnetic fields, laser photons can convert to chameleon particles which can be trapped inside a vacuum cavity. We have shown that these particles are expected to form a gas inside the cavity, and that they might reveal themselves as an afterglow after the laser is switched off. In general, for long enough loading times, a stationary state is achieved, where the chameleon production in the laser beam and the loss via back-conversion to photons is balanced. In this case, the afterglow rate only depends on the initial production rate and not on the details of the experiment. This kind of experiment is in principle sensitive to couplings below $1/M \sim 10^{-8} \text{ GeV}^{-1}$, which is orders of magnitude smaller than the sensitivity of typical laser polarization experiments. Its sensitivity also compares favorably with Casimir force experiments. The main constraints on afterglow experiments come from the required loading times which can easily become orders of magnitudes larger than $\sim \mathcal{O}(100 \text{ s})$.

We have also sketched the concept of a Fabry-Pérot cavity for the chameleons. With an appropriate tuning of phase shifts the sensitivity of the experiment compared to the case of a chameleon gas might be further increased by a factor $\Delta t/4\ell$ in the case where the loading time Δt is much smaller than the inverse loading rate Γ . In the (academic) case $\Delta t\Gamma \gg 1$ the cavity will act as a mirror for the incoming photon beam and the rate of afterglow photons in the unloading phase of the cavity reaches the intensity of the initial laser beam. However, in an experimental realization of this concept the time scale Δt will be limited by the effective finesse of the chameleon cavity, *i.e.* the maximal number of cycles achievable.

Open questions concern the possible thermalization of the chameleon gas, and the question under which circumstances the particle picture breaks down due to strong coupling effects. The answers will most probably depend strongly on the specific potential $V(\phi)$ and might lead to strong constraints on chameleon theories. We will consider this elsewhere [26].

References

- [1] C. Wetterich, Nucl. Phys. **B302**, 668 (1988).
- [2] B. Ratra and P. J. E. Peebles, Phys. Rev. **D37**, 3406 (1988).
- [3] R. R. Caldwell, R. Dave, and P. J. Steinhardt, Phys. Rev. Lett. **80**, 1582 (1998), astro-ph/9708069.

- [4] J. Khoury and A. Weltman, Phys. Rev. Lett. **93**, 171104 (2004), astro-ph/0309300.
- [5] J. Khoury and A. Weltman, Phys. Rev. **D69**, 044026 (2004), astro-ph/0309411.
- [6] P. Brax, C. van de Bruck, A.-C. Davis, J. Khoury, and A. Weltman, Phys. Rev. **D70**, 123518 (2004), astro-ph/0408415.
- [7] D. F. Mota and D. J. Shaw, Phys. Rev. Lett. **97**, 151102 (2006), hep-ph/0606204.
- [8] D. F. Mota and D. J. Shaw, Phys. Rev. **D75**, 063501 (2007), hep-ph/0608078.
- [9] P. Brax, C. van de Bruck, A.-C. Davis, D. F. Mota, and D. Shaw, arXiv:0709.2075 [hep-ph].
- [10] J. Jaeckel, E. Masso, J. Redondo, A. Ringwald, and F. Takahashi, Phys. Rev. **D75**, 013004 (2007), hep-ph/0610203.
- [11] P. Brax, C. van de Bruck, and A.-C. Davis, hep-ph/0703243.
- [12] P. Brax, C. van de Bruck, A.-C. Davis, D. F. Mota, and D. J. Shaw, arXiv:0707.2801 [hep-ph].
- [13] [BFRT Collaboration], R. Cameron *et al.*, Phys. Rev. **D47**, 3707 (1993).
- [14] [BMV Collaboration], C. Rizzo, 2nd ILIAS-CERN-CAST Axion Academic Training 2006, <http://cast.mppmu.mpg.de/>.
- [15] [PVLAS Collaboration], E. Zavattini *et al.*, Phys. Rev. Lett. **96**, 110406 (2006), hep-ex/0507107.
- [16] [PVLAS Collaboration], E. Zavattini *et al.*, arXiv:0706.3419 [hep-ex].
- [17] [OSQAR Collaboration], P. Pugnat *et al.*, CERN-SPSC-2006-035.
- [18] [Q&A Collaboration], S.-J. Chen, H.-H. Mei, and W.-T. Ni, hep-ex/0611050.
- [19] [ALPS Collaboration], K. Ehret *et al.*, hep-ex/0702023.
- [20] [ALPS Collaboration], <http://alps.desy.de/>.
- [21] [GammeV Collaboration], <http://gammev.fnal.gov/>.
- [22] [LIPSS Collaboration], K. Baker, 2nd ILIAS-CERN-CAST Axion Academic Training 2006, <http://cast.mppmu.mpg.de/>.
- [23] [PVLAS Collaboration], G. Cantatore, 2nd ILIAS-CERN-CAST Axion Academic Training 2006, <http://cast.mppmu.mpg.de/>.
- [24] H. Gies, D. F. Mota, and D. J. Shaw, arXiv:0710.1556 [hep-ph].
- [25] G. Raffelt and L. Stodolsky, Phys. Rev. **D37**, 1237 (1988).
- [26] A. Ringwald, L. Schrempp, and C. Weniger, work in progress.