

SUPERCOMBINATA[®]

THE UNIQUE COMBO ONE

SUPERCOMBINATA
Elsa www.elsa.com Portable Line Bor



BE_XTRA

**A UNIQUE AND
EXTRAORDINARY
PRODUCT**

**RELIABLE
SUSTAINABLE
SIMPLE
POWERFUL**

**LINE BORING | OVERLAY WELDING | FACING
THREADING | EXTERNAL TURNING | DRILLING | TAPPING**

SUPERCOMBINATA®

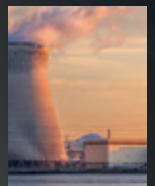
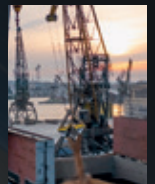
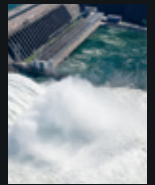
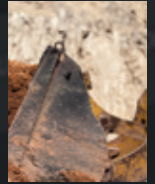
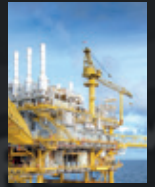
THE UNIQUE COMBO ONE

The SUPERCOMBINATA series offers customers the possibility of bringing machining directly to the place where it is needed, thus improving efficiency and convenience. This concept overturns the traditional way of approaching industrial challenges and represents innovation at its best.

It is designed to meet the increasingly demanding requirements in the field of maintenance and repair.

Thanks to its small size and extreme versatility and precision, it can perform machining operations directly on site, reducing the time and costs of a traditional repair. Supercombinata portable line borers allow on-site operations, thus reducing downtime and transport costs. They have been successfully used for many years in many different industrial sectors

**EARTHMOVING, SHIPYARDS,
HYDROPOWER, RAILWAY,
WINDPOWER, NUCLEAR
INDUSTRY, OFFSHORE**



BE_XTRA

CHOOSE THE ONLY EXTRAFACTORY SOLUTION

Elsa is a company with over 25 years of experience in the development and marketing of multifunctional portable machine tools. Throughout this time, the company has become an industry leader and earned a global reputation for quality and reliability.

Elsa S.r.l. is recognised worldwide as a synonym for excellence and innovation in the field of portable metalworking machine tools.



WE OFFER INNOVATIVE PRODUCTS, MADE IN ITALY, ALWAYS AT THE FOREFRONT OF QUALITY AND RELIABILITY

Elsa has transformed the concept of 'out of the factory' or 'ex factory' into a concrete reality. The company has paved the way for machining operations such as line boring and welding directly on site, beyond the limitations of traditional in-house machining operations.



SUPERCOMBINATA®

BASIC



LINE BORING AND OVERLAY WELDING, FLANGE FACING AND CREATION OF SEATS FOR SEEGER RINGS, EXTERNAL TURNING

BASIC

Line boring: \varnothing 22 - 120 mm
Internal welding: Extra kit
Boring bar diameter: \varnothing 20 x 1800 mm / \varnothing 40 x 1500 mm
Rotation motor: 1800 W with 2-speed geared motor
Output torque at the bar: 290 Nm with 120 rpm
Longitudinal stroke unlimited with 350 mm step
Voltage: 230 V (50 Hz) or 110 V (50 Hz)
Main unit: 36 kg





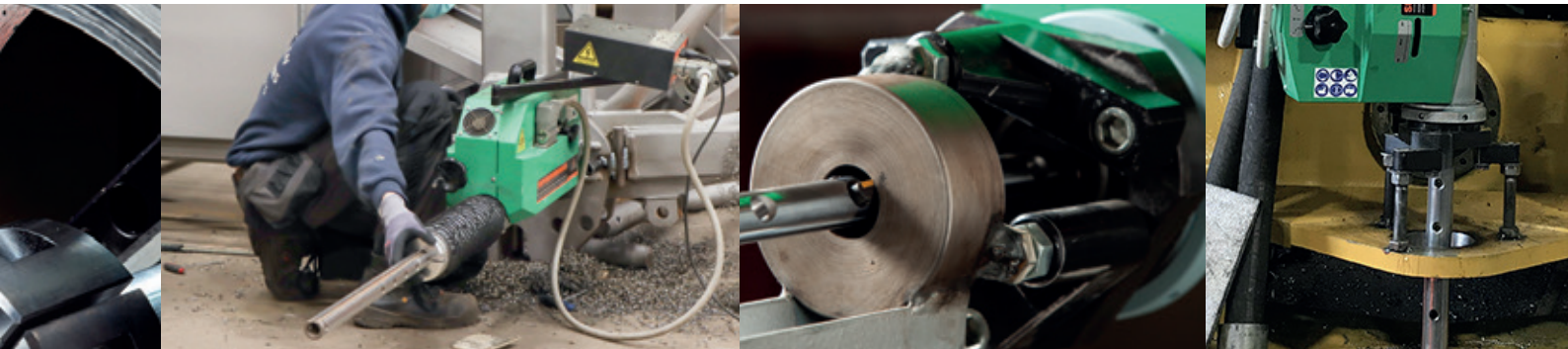
LINE BORING AND OVERLAY WELDING, FLANGE FACING AND CREATION OF SEATS FOR SEEGER RINGS, EXTERNAL TURNING

EASY

Line boring: \varnothing 22 - 250 mm
 Internal welding: \varnothing 42 - 250 mm
 Boring bar diameter: \varnothing 40 x 2200 mm
 Rotation motor: 1800 W with 2-speed geared motor
 Output torque at the bar: 290 Nm with 120 rpm
 Longitudinal stroke unlimited with 350 mm step
 Voltage: 230 V (50 Hz) or 110 V (50 Hz)
 Main unit: 36 kg

EASY COMPACT

Line boring: \varnothing 42 - 250 mm
 Internal welding: \varnothing 42 - 250 mm
 Boring bar diameter: \varnothing 40 mm x 2200 mm
 Rotation motor: 1800 W with 2-speed geared motor
 Output torque at the bar: 290 Nm with 120 rpm
 Longitudinal stroke unlimited with 250 mm step
 Voltage: 230 V (50 Hz) or 110 V (50 Hz)
 Main unit: 34 kg





LINE BORING AND OVERLAY WELDING, FLANGE FACING AND CREATION OF SEATS FOR SEEGER RINGS, EXTERNAL TURNING

SC1 | SC1 DIGITAL

Line boring: \varnothing 42 - 400 mm
 Internal welding: \varnothing 42 - 400 mm
 Boring bar diameter: \varnothing 40 x 2200 mm
 Rotation motor: 1800 W with 4-speed geared motor
 Output torque at the bar: Up to 400 Nm with 95 rpm
 Longitudinal stroke unlimited with 350 mm step
 Voltage: 230 V (50 Hz) or 110 V (50 Hz)
 Main unit: 36 kg

SC2 | SC2 DIGITAL

Line boring: \varnothing 62 - 600 mm
 Internal welding: \varnothing 42 - 600 mm
 Boring bar diameter: \varnothing 60 x 2200 mm
 Rotation motor: 1800 W with 4-speed geared motor
 Output torque at the bar: Up to 520 Nm with 65 rpm
 Longitudinal stroke unlimited with 350 mm step
 Voltage: 230 V (50 Hz) or 110 V (50 Hz)
 Main unit: 36 kg

SC2 COMPACT

Line boring: \varnothing 62 - 250 mm
 Internal welding: \varnothing 42 - 250 mm
 Boring bar diameter: \varnothing 60 x 2200 mm
 Rotation motor: 1800 W with 2-speed geared motor
 Output torque at the bar: 350 Nm with 100 rpm
 Longitudinal stroke unlimited with 250 mm step
 Voltage: 230 V (50 Hz) or 110 V (50 Hz)
 Main unit: 34 kg

SC3 | SC3 DIGITAL

Line boring: \varnothing 62 - 800 mm
 Internal welding: \varnothing 42 - 800 mm
 Boring bar diameter: \varnothing 60 x 2200 mm
 Rotation motor: 2300 W with 4-speed geared motor
 Output torque at the bar: 902 Nm with 55 rpm
 Longitudinal stroke unlimited with 350 mm step
 Voltage: 230 V (50 Hz) or 110 V (50 Hz)
 Main unit: 39 kg



EXTRA KITS

BORING REDUCTION

EASY | EASY COMPACT | SC1
SC2 | SC2 COMPACT | SC3

The reduction kit has been designed to give great versatility of use to the portable line boring machines of the Supercombinata series. With the addition of Ø 20, 30 or 40 mm boring shafts, the standard working range can be reduced to perform line boring jobs from min. Ø 22 mm.



BIG DIAMETERS

SC1 | SC2 | SC3

The kit has been designed to extend the standard machining range of the portable line boring machine Supercombinata, allowing internal line boring and overlay welding from Ø 400 mm to Ø 1200 mm.



FACING

BASIC | EASY COMPACT
SC1 | SC2
SC2 COMPACT | SC3

The kit has been designed to give great versatility of use to the portable boring machines of the Supercombinata series. It consists in a facing head allowing flange facing and the creation of seats for seeger circlips and o-rings, by using standard cutting inserts from Ø 48 mm to Ø 800 mm.



INTERNAL THREADING

SC1 | SC2 | SC3

The kit has been designed to give great versatility of use to the portable boring machines of the Supercombinata series, by allowing to perform internal threading from Ø 120 mm to Ø 350 mm.



EXTERNAL TURNING

BASIC | EASY | EASY COMPACT
SC1 | SC2 | SC2 COMPACT | SC3

The kit has been designed to give great versatility of use to the portable boring machines of the Supercombinata series, allowing to perform cylindrical turning and overlay welding from Ø 60 to 300 mm.





Elsa Srl
Località La Petrizia - SS 106
88050 Sellia Marina (CZ) - Italia
Tel: (+39) 0961 962854
Fax: (+39) 0961 968716
info@elsasrl.com

www.elsasrl.com