

Revisiting Runtime Dynamic Optimization for Join Queries in Big Data Management Systems

Christina Pavlopoulou
University of California, Riverside
cpavl001@ucr.edu

Michael J. Carey
University of California, Irvine
mjcarey@uci.edu

Vassilis J. Tsotras
University of California, Riverside
tsotras@cs.ucr.edu

ABSTRACT

Query Optimization remains an open problem for Big Data Management Systems. Traditional optimizers are cost-based and use statistical estimates of intermediate result cardinalities to assign costs and pick the best plan. However, such estimates tend to become less accurate because of filtering conditions caused either by undetected correlations between multiple predicates local to a single dataset, predicates with query parameters, or predicates involving user-defined functions (UDFs). Consequently, traditional query optimizers tend to ignore or miscalculate those settings, thus leading to suboptimal execution plans. Given the volume of today's data, a suboptimal plan can quickly become very inefficient.

In this work, we revisit the old idea of *runtime dynamic optimization* and adapt it to a shared-nothing distributed database system, AsterixDB. The optimization runs in stages (re-optimization points), starting by first executing all predicates local to a single dataset. The intermediate result created from each stage is used to re-optimize the remaining query. This re-optimization approach avoids inaccurate intermediate result cardinality estimations, thus leading to much better execution plans. While it introduces the overhead for materializing these intermediate results, our experiments show that this overhead is relatively small and it is an acceptable price to pay given the optimization benefits. In fact, our experimental evaluation shows that runtime dynamic optimization leads to much better execution plans as compared to plans produced by static cost-based optimization (i.e. based on the initial dataset statistics) and other state-of-the-art approaches.

1 INTRODUCTION

Query optimization is a core component in traditional database systems, as it facilitates the order of execution decisions between query operators along with each operator's physical implementation algorithm. One of the most demanding operators is the Join, as it can be implemented in many different ways depending on the sizes of its inputs and outputs. To tackle the join optimization problem, two different approaches have been introduced.

The first approach (introduced in System R [8]) is cost-based query optimization; it performs an exhaustive search (through dynamic programming) among all different join orderings until the one with the smallest cost is found and eventually executed in a pipelined mode. The second approach (introduced around the same time in INGRES [37]) uses instead a runtime dynamic query optimization method (later known as Adaptive Query Processing (AQP)), where the original query is decomposed into single-variable (i.e., single dataset) subqueries which are executed separately. This decomposition takes place by: (1) breaking

off components of the query which participate with a single variable (e.g selections), (2) implementing joins by substituting one of the join variables with a tuple-at-a-time value. Each subquery result is stored as a new relation that is then considered by the optimizer so as to optimize the remaining query. The choice of the "next" subquery to be executed is based on the cardinality of the participating datasets.

The INGRES approach was a greedy cardinality-based technique, with runtime overhead due to creating indexed (for joins) intermediate results, and the more comprehensive, cost-based, compile-time approach of System-R became the field's preferred approach for many years [18, 20, 27, 33]. To assign a cost for each plan (and thus find the best join ordering and implementation algorithms among the search space) the cost-based approach depends heavily on statistical information. The accuracy of such statistics is greatly affected by the existence of multiple selection predicates (on a single dataset), *complex* selection predicates (i.e., with parameterized values or UDFs) and join conditions that are not based on key-foreign key relationships. In such cases, statistics can be very misleading, resulting in inaccurate join result estimations. As the number of joins increases, the error can get worse as it gets propagated to future join stages [23]. These issues are exacerbated in today's big data management systems (BDMS) by the sheer volume of data.

In this work, we revisit the runtime dynamic optimization introduced by INGRES [37] and adapt it (with modifications) to a shared-nothing distributed BDMS. In particular, we fully implemented it on Apache AsterixDB and experimented (using TPC datasets) under various workloads so as to evaluate its performance in a real BDMS system. With the increase in the volume of data, even small errors in the join order can generate *very expensive* execution plans. A characteristic of the original dynamic optimization approach is that the choice of the "next" subquery to be executed is based only on dataset cardinality. However, the alternative cost-based optimization approach has shown that, for better join result estimation, one needs better statistics. Thus, we take advantage here of the materialization stages to collect all needed statistics. This combination of re-optimization and statistics collection leads to superior execution plans.

Specifically, when a query is executed, all predicates local to a table are pushed down and they are executed first to gather updated accurate statistics. The intermediate results along with the updated statistics are fed back to the optimizer to choose the cheapest initial join to be executed. This process is repeated until only two joins are left in the query (three datasets). At that point, dynamic optimization will pick one of the two joins (based on least cardinality) as the best, leaving only one join to be processed. For the remaining join there is no reason to collect any more statistics. We integrated our techniques in AsterixDB [1, 7] which, like many relational database systems, is optimized for executing queries in a pipelined manner. Although with our modified dynamic optimization approach the query execution goes through blocking re-optimization points, this extra overhead

© 2022 Copyright held by the owner/author(s). Published in Proceedings of the 25th International Conference on Extending Database Technology (EDBT), 29th March-1st April, 2022, ISBN 978-3-89318-086-8 on OpenProceedings.org. Distribution of this paper is permitted under the terms of the Creative Commons license CC-by-nc-nd 4.0.

is relatively minimal and is thus worthwhile since very expensive query plans are avoided.

Various works have been proposed in literature that use dynamic optimization techniques to alleviate the problems introduced by static cost-based optimization [9, 10, 17, 24, 34]. In this context, new statistics are estimated after mid-query execution (with information gathered from intermediate results) and they are used to re-calibrate the query plan. This is similar to our approach; however, such works tend to ignore information coming from correlated selectivities, predicates with parameterized values and UDFs. Instead, by executing the local predicates first, we gain accurate cardinality estimations early that lead to improved query performance (despite the overhead of materializing those filters). Dynamic optimization has also been introduced in multi-node environments [6, 25, 26, 28]. These works either introduce unnecessary additional overheads by running extra queries to acquire statistical data for the datasets [25] or they need to re-partition data because of lazily picking an inaccurate initial query plan [28]. Runtime dynamic optimization has been used in [26] but multi-join queries were not considered. Re-optimization points are used in [6] in a different way, as a place where an execution plan can be stopped if its execution is not as expected.

As we show in the experimental evaluation, for a variety of workloads, our modified runtime dynamic optimization will generate query plans that are better than even the best plans formed by (i) a user-specified order of the datasets in the FROM clause of a submitted query, or (ii) traditional static cost-based optimizers. In particular, our methods prevent the execution of expensive plans and promote more efficient ones. Re-optimizing the query in the middle of its execution and not focusing only on the initial plan can be very beneficial, as in many cases, the first (static) plan is changed dramatically by our optimizer.

In summary, this paper makes the following contributions:

- We adapt an INGRES-like dynamic optimization scheme in a shared-nothing BDMS (Apache AsterixDB). This includes a predicate pre-processing step that accurately estimates initial selectivities by executing all predicates local to a dataset early on. We insert multiple re-optimization points during query execution to receive feedback (updated statistics for join results) and refine the remaining query execution plan. At each stage (i.e. re-optimization point), we only consider the next cheapest join, thus avoiding forming the whole plan and searching among all the possible join ordering variations.
- We assess the proposed dynamic optimization approach via detailed experiments that showcase its superiority against traditional optimizers. We also evaluate the overhead introduced by the multiple re-optimization points and the materialization of intermediate results.

The rest of the paper is organized as follows: Section 2 discusses existing work on runtime dynamic optimization, while Sections 3 and 4 outline the architecture of AsterixDB and the statistics collection framework respectively. Section 5 describes the details of the dynamic optimization approach including the use of statistics, while Section 6 showcases how the approach has been integrated into the current version of AsterixDB. The experimental evaluation appears in Section 7. Section 8 concludes the paper and presents directions for future research.

2 RELATED WORK

Traditional query optimization focuses on cost models derived from statistics on base datasets (cost-based optimization) as introduced in System R [8]. Typically, there are two steps in this process: first, there is a rewrite phase that transforms the specified query into a collection of alternate plans (created by applying a collection of rules), and second, cost models based on cardinality estimation are used to pick the plan with the least cost [16, 18, 19]. A cost-based optimization approach adapted for parallel shared-nothing architectures is described in [35]; here the master node sends the query to all worker nodes along with statistics. Then, each worker decides the best plan based on its restrictions and sends its decision to the master. Finally, the master decides the globally optimal plan. This way, all the nodes in the cluster are working in parallel to find the best plan, each node working with a smaller set of plans. Our work also considers the shared-nothing environment, however, we concentrate on runtime dynamic optimization.

Runtime dynamic optimization was introduced in INGRES [37], where a query is decomposed into single-variable queries (one dataset in the FROM clause) which are executed separately. Based on the updated intermediate data cardinalities, the next best query is chosen for execution. In our work, we wanted to revisit this approach and see whether big data processing systems can benefit from it. Hence we execute part of the query to obtain statistics from the intermediate results and refine the remaining query. Opposite to INGRES, we do not depend only on cardinalities to build our cost model, but we collect more information regarding base and intermediate data based on statistics. Since INGRES, there have been various works using runtime dynamic optimization in a single-server context. Specifically, LEO [34] calibrates the original statistics according to the feedback acquired from historical queries and uses them to optimize future queries. In Eddies [9] the selectivity of each query operator is calculated while records are being processed. Eventually, the more selective operators are prioritized in the evaluation order.

Dynamic optimization is more challenging in a shared-nothing environment, as data is kept and processed across multiple nodes. Optimus [26] leverages runtime statistics to rewrite its execution plans. Although it performs a number of optimizations, it does not address multi-way joins, which as [26] points out, can be “tricky” because the data may need to be partitioned in multiple ways. RoPE [6] leverages historical statistics from prior plan executions in order to tune future executions, e.g. the number of reduce tasks to schedule, choosing appropriate operations, including order. Follow-up work [14] extends the RoPE design to support general query workloads in Scope [39]. Their strategy generates a (complete) initial query plan from historical statistics, and it collects fresh statistics (specifically, partitioned histograms) during execution that can be used to make optimized adjustments to the remaining operators in the plan. However, in order not to throw away work, reoptimization takes place after a certain threshold and the initial plan is configured only based on the base datasets, which can potentially lead to suboptimal plans. In contrast, in our approach we block the query after each join stage has been completed and we use the result to optimize the subsequent stages; hence no join work is wasted. Furthermore, we estimate the selectivity of predicates by pushing down their execution; hence we avoid initial possibly misleading calculations. Nevertheless, learning from past query executions is an

orthogonal approach that could be used to further optimize our approach and it is part of our future work.

Another approach belonging to the runtime dynamic optimization category uses *pilot runs*, as introduced in [25]. In an effort to alleviate the need for historical statistics, pilot runs of the query are used on sample data. There are two main differences between this approach and our work. First, statistics obtained by pilot runs are not very accurate for joins that do not have a primary/foreign key condition as sampling can be skewed under those settings. In contrast, our work gathers statistics on the base datasets which leads to more accurate join result estimations for those joins. Secondly, in our work we exploit AsterixDB’s LSM ingestion process to get initial statistics for base datasets along with materialization of intermediate results to get more accurate estimations - thereby we avoid the extra overhead of pilot runs. ROX [4] is another work that gathers statistics (only) on samples instead of the base datasets. In contrast to pilot runs, they gather statistics on samples even for intermediate results and they adapt runtime dynamic optimization for the XQuery language. In our work we gather statistics on the base datasets which leads to more accurate join result estimations. Finally, Monsoon [32] uses a probabilistic model to decide if preprocessing is needed for cardinality estimation. This technique could be used to further optimize our approach once we focus on more costly predicates.

Finally, RIOS [28] is another system that promotes runtime incremental optimization. In contrast to Optimus, RIOS assumes that the potential re-partitioning overhead is amortized by the efficiency of their approach. Particularly, statistics are collected during a pre-partitioning stage in which all the datasets participating in the query are partitioned according to an initial lazy plan formed based on raw byte size. A disadvantage of the prepartitioning phase is that if statistics collected during it indicate that this is not the correct plan, RIOS re-partitions the data. This is done if and only if the difference between the lazy plan and the better one is larger than a certain threshold. In that case, the remaining query is optimized according to the feedback acquired by intermediate results. In contrast to RIOS, our method alleviates the need for potential expensive re-partitioning since accurate statistics are collected before the query is processed by the optimizer. That way, we can pick the right join order from the beginning and thereby the right partitioning scheme. Hence, we avoid the overhead of faulty partitioning, which for large volumes can be very significant.

Among the aforementioned works that focus on parallel RDBMS, the closest to our technique are RIOS [28] and pilot runs [25] since they do not require the use of historical statistics. (The others either do not concentrate on joins [26, 32] or they process very different query languages [4].) For our experimental comparisons we implemented the pilot runs approach [25] in AsterixDB (see Section 7). We did not implement RIOS [28] since its prepartition phase is quite different than the query workflow in AsterixDB, where each dataset is already stored partitioned and then repartitioned if needed at the first join stage that it is involved in.

3 ASTERIXDB BACKGROUND

Apache AsterixDB is a parallel, shared-nothing platform that provides the ability to ingest, store, index, query, and analyze mass quantities of semistructured data. To process a submitted query, AsterixDB compiles it into an Algebricks [12] program also known as the logical plan. This plan is then optimized via

rewrite rules that reorder the Algebricks operators and introduce partitioned parallelism for scalable execution. After this (rule-based) optimization step, a code generation step translates the resulting physical query plan into a corresponding Hyracks Job [13] that will use the Hyracks engine to compute the requested query results. Finally, the runtime plan is distributed across the system and executed locally on every slave of the cluster. For query execution, AsterixDB employs a dataflow-based approach, as is commonly found in parallel RDBMSs and in the current runtimes for Big Data platforms including Pig, Hive, Impala, Apache Tez, and Spark [11]. Given these architectural similarities (from a query processing perspective) between AsterixDB and other big data platforms, it should be noted that the work reported here should be applicable to other such systems as well.

Although all AsterixDB layers will participate in the integration of our work, the query optimizer, which is mainly in the Algebricks layer, will be our core focus. Currently, the AsterixDB optimizer takes into consideration many data properties, such as the data partitioning and ordering, and decides according to a set of heuristic rules (which are the core of Algebricks) how the query should be executed. These heuristic rules are applied without any information gathered from statistics. For multi-join queries, the join order in AsterixDB currently depends on the order of the datasets in the *FROM* clause of the query (i.e., datasets are picked in the order they appear in it). Generally, the compiler will produce right-deep joins; if the user wants to generate bushy-joins, it is feasible by grouping the datasets together using parentheses. However, in our experience this option can be complicated for naive users.

Another aspect in join query optimization is the choice of join algorithm. AsterixDB supports multiple algorithms like Hash, Broadcast and Nested Loop Join. Below, we describe the implementation of each algorithm in AsterixDB.

Hash Join: Assuming the join’s input data is not partitioned in a useful way, the algorithm redistributes the data by hashing both inputs on the join key(s) – thereby ensuring that objects that should be joined will be routed to the same partition for processing – and then effects the join using dynamic hash join. In more detail, the “build” side of the join is first re-partitioned and fed over the network into the build step of a local hash join; each partition will then have some portion (perhaps all) of the to-be-joined build input data in memory, with the rest (if any) in overflow partitions on disk. The “probe” side of the join is then re-partitioned similarly, thus creating a pipelined parallel orchestration of a dynamic hash join. In the event that one of the inputs is already partitioned on the join key(s), e.g., because the join is a key/foreign key join, re-partitioning is skipped (unnecessary) for that input and communication is saved.

Broadcast Join: This strategy employs a local dynamic hash join where one of the join inputs (ideally a small one) is broadcast – replicated, that is – to all partitions of the other input. The broadcast input is used as the build input to the join, and once the build phase is done the participating partitions can each probe their local portion of the other larger input in order to effect the join.

Indexed Nested Loop Join: Here, one of the inputs is broadcast (replicated) to all of the partitions of the other input, which for this strategy must be a base dataset with an index on the join key(s); as broadcast objects arrive at each partition they are used to immediately probe the index of the other (called “inner”) dataset.

Currently, in AsterixDB, the hash join is picked by default unless there are query hints that make the optimizer pick one of the other two algorithms. However, when a broadcast join can be applied, joins can complete much faster as expensive shuffling of the large dataset is avoided.

Optimizer Limitations: The current rule-based optimizer in AsterixDB has several limitations:

- There is no selectivity estimation for predicates. Consequently, opportunities are missed for choosing the right join orders and join algorithms. Broadcast joins, in particular, will not be considered without a hint, even in the case when a dataset becomes small enough to fit in memory after the application of a selective filter.
- There is no cost-based join enumeration. Thus, a query’s performance relies largely on the way it has been written by the user (i.e., the dataset ordering in the FROM clause).

Although the work here targets the Apache AsterixDB code base, any query processing platform targeting large-scale data that supports a typical join operator would be able to incorporate our techniques with the following changes:

- (1) Instrument the system’s query runtime to collect dynamic statistics over attributes.
- (2) Incorporate a cost model analogous to ours into the system’s query optimizer.
- (3) Create (if needed, else utilize) new operators that materialize intermediate results and scan them to re-optimize the remainder of a query.
- (4) Identify potential re-optimization points in the plan.

4 STATISTICS COLLECTION

At each re-optimization point, we collect statistical information about the base and intermediate datasets that will help the optimizer decide the best join order and join algorithm. These statistics are later used to estimate the actual join result size by using the following formula, as described in [31]:

$$A \bowtie_k B = S(A) * S(B) / \max(U(A.k), U(B.k)) \quad (1)$$

where $S(x)$ is the size of dataset x and $U(x.k)$ is the number of unique elements for attribute k of dataset x . The size of a dataset is the number of qualified records in the dataset immediately before the join operation. If a dataset has local predicates, the traditional way to calculate result cardinality is to multiply all the individual selectivities [31]. However, as it will be described in section 5.1, we use a more effective approach for this calculation.

Statistics Types: To measure the selectivity of a dataset for specific values, we use quantile sketches. Following the Greenwald-Khanna algorithm [36], we extract quantiles which represent the right border of a bucket in an equi-height histogram. The buckets help us identify estimates for different ranges which are very useful in the case that filters exist in the base datasets. To find the number of unique values needed for formula 1, we use Hyperloglog [29] sketches. The HLL algorithm can identify with great precision the unique elements in a stream of data. We collect these types of statistics for every field of a dataset that may participate in any query. It should be noted that the gathering of these two statistical types happens in parallel.

5 RUNTIME DYNAMIC OPTIMIZATION

The main focus of our dynamic optimization approach is to utilize the collected statistics from intermediate results in order to

refine the plan on each subsequent stage of a multi join query. To achieve this aim, there are several stages that need to be considered.

As described in Algorithm 1 lines 6-9, the first step is to identify all the datasets with predicates. If the number of predicates is more than one, or, there is at least one complex predicate (with a UDF or parameterized values), we execute them as described in Section 5.1. Afterwards, while the updated query execution starts as it would normally do, we introduce a loop which will complete only when there are only two joins left in the query. In that case, there is no reason to re-optimize the query as there is only one possible remaining join order. This loop can be summarized in the following steps:

- A query string, along with statistics, are given to the **Planner** (line 12) which is responsible for figuring out the next best join to be executed (the one that results in the least cardinality) based on the initial or online statistics. As a result, the Planner does not need to form the complete plan, but only to find the cheapest next join for each iteration.
- The output plan is given as input to the **Job Construction** phase (line 14) which actually converts it to a job (i.e. creation of query operators along with their connections). This job is executed and the materialized results will be rewired as input whenever they are needed by subsequent join stages.
- Finally, if the remaining number of datasets is more than three, we return to the **Planner** phase with the new query as formatted in the **Query Reconstruction** phase (line 13); otherwise the result is returned.

5.1 Selective Predicates

Filtering can be introduced in the WHERE clause of a query in several forms; here we are focusing on selection predicates. In the case that a dataset has only one local selection predicate with fixed value, we exploit the equi-height histogram’s benefits. Particularly, depending on the number of buckets that we have predefined for the histogram, the range cardinality estimation can reach high accuracy.

However, for multiple selection predicates or complex predicate(s), the prediction can be very misleading. In the case of multiple (fixed value) predicates, traditional optimizers assume predicate independence and thus the total selectivity is computed by multiplying the individual ones. This approach can easily lead to inaccurate estimations [22]. In the absence of values for parameters, and given non-uniformly distributed data (which is the norm in real life), an optimizer cannot make any sort of intelligent prediction of selectivity, thus default values are used as described in [31] (e.g. 1/10 for equalities and 1/3 for inequalities). The same approach is taken for predicates with UDFs [21]. Most works dealing with complex predicates [15, 21] focus on placing such predicates in the right order and position within the plan, given that the selectivity of the predicate is provided. In our work, we exploit the INGRES [37] approach and we push down the execution of predicates (lines 20-23 of Algorithm 1) to acquire accurate cardinalities of the influenced datasets.

As a complex predicate example consider the following query Q_1 , where we have four datasets, two of which are filtered with UDFs and then joined with the remaining two. (For simplicity in this example we use UDFs but the same procedure is followed for predicates with parameterized values.)

```
select A.a
```

Algorithm 1 Dynamic Optimization

```
1:  $J \leftarrow$  joins participating in the original query
2:  $D \leftarrow$  collection of base datasets ( $d$ ) in the query
3: Statistics  $\leftarrow$  quantile and hyperloglog sketches for each field of  $D$ 
   that is a join key
4:  $Q(\sigma, D, J) \leftarrow$  original query as submitted by user  $\triangleright \sigma$  is the
   projection list
5:
6: for  $d$  in  $D$  do
7:    $P \leftarrow$  set of selective predicates local to  $d$ 
8:   if  $|P| > 1$  then
9:      $D \leftarrow \{d\} \cup \text{PUSHDOWNPREDICATES}(d, P)$ 
10:
11: while  $|J| > 2$  do
12:    $j \leftarrow \text{PLANNER}(J, \text{Statistics})$ 
13:    $Q(\sigma, D, J) \leftarrow \text{QUERYRECONSTRUCTION}(j, Q(\sigma, D, J))$ 
14:   intermediateResults, Statistics  $\leftarrow$ 
     ConstructAndExecute( $j$ )  $\triangleright$  collect statistical sketches on
     intermediate data and integrate them on the statistics collection
     framework
15:    $J \leftarrow$  joins in  $Q(D)$ 
16:
17:  $j \leftarrow \text{PLANNER}(J, \text{Statistics})$ 
18: return ConstructAndExecute( $j$ )
19:
20: function PUSHDOWNPREDICATES( $d, P$ )
21:    $Q(\sigma, \{d\}, \emptyset) \leftarrow$  query consists only of  $d$  with its local predicates
    $\triangleright \sigma$  is filled by fields participating in joins
22:    $d', \text{Statistics} \leftarrow \text{Execute}(Q(\sigma, \{d\}, \emptyset))$   $\triangleright$  update original
   Statistics with the sketches collected for the new  $d$ 
23:   return  $d'$ 
24:
25: function PLANNER( $J, \text{Statistics}$ )
26:    $\text{minJoin} \leftarrow \emptyset, \text{finalJoin} \leftarrow \emptyset$ 
27:   for  $j$  in  $J$  do
28:      $\text{minJoin} \leftarrow \min(\text{minJoin}, \text{JoinCardinality}(j, \text{Statistics}))$ 
29:   if  $|J| = 2$  then
30:      $\text{finalJoin} \leftarrow \text{BestAlgorithm}(\text{minJoin})$   $\bowtie$ 
      $\text{BestAlgorithm}(J - \{\text{minJoin}\})$ 
31:   else
32:      $\text{finalJoin} \leftarrow \text{BestAlgorithm}(\text{minJoin})$ 
33:   return  $\text{finalJoin}$ 
34:
35: function QUERYRECONSTRUCTION( $j(d_1, d_2), Q(\sigma, D, J)$ )
36:    $d' \leftarrow \text{CreateDataset}(j(d_1, d_2))$ 
37:    $D \leftarrow (D \cup \{d'\}) - \{d_1, d_2\}$ 
38:    $J \leftarrow J - \{j(d_1, d_2)\}$ 
39:   return  $Q(\sigma, D, J)$ 
```

```
from A, B, C, D
where udf(A) and A.b = B.b
and udf(C) and B.c = C.c
and B.d = D.d;
```

As indicated in line 21 of Algorithm 1, we isolate the datasets enhanced with local filters and we create queries for each one of those similarly to the decomposition technique used in INGRES to create single variable queries. In Q_1 , datasets A and C will be wrapped around the following single variable queries (Q_2 and Q_3 accordingly):

```
select A.a, A.b           select C.c
from A                   from C
where udf(A);           where udf(C);
```

Note that in both queries the SELECT clause is defined by attributes that participate in the remaining query (i.e in the projection list, in join predicates, or in any other clause of the main query). Once the query construction is completed, we execute them and we save the intermediate results for future processing from the remaining query. At the same time, we also update the statistics (hyperloglog and quantile sketches) attached to the base unfiltered datasets to depict the new cardinalities. Once this process is finished, we need to update Q_1 with the filtered datasets (line 9 in Algorithm 1), meaning removing the UDFs and changing the FROM clause. The final query which will be the input to the looping part of our algorithm (lines 11-18) is illustrated below as Q'_1 .

```
select A'.a
from A', B, C', D
where A'.b = B.b and B.c = C'.c
and B.d = D.d;
```

5.2 Planner

Next is the Planner stage (lines 25-30), where the input is the non-optimized query (in our case Q'_1), along with the most updated statistics. The goal of this stage is to output the best plan (since we focus on joins, this is the plan containing the best join order and join algorithm).

The first step in the Planner phase is to identify the join with the least result cardinality, along with its algorithm (lines 27-28). After that, we need to construct the join which will be output. If there are more than two joins in the input, then the cheapest join is the output and we are done (lines 31-32). However, in the case that there are only two joins, the Planner will pick the most suitable algorithm for both joins. Then, it will combine the two joins by ordering them according to their result cardinality estimation (lines 29-30 of Algorithm 1).

In Q'_1 there are three joins, which means that the first case is applied and it suffices to find the cheapest join according to statistics. Assuming that according to formula 1, A' and B lead to the smallest result cardinality, and A' (after the UDF application) is small enough to be broadcast, the plan output is a broadcast algorithm between A' and B ($J_{A'B}$).

5.3 Job Construction

Next, we construct a job for the plan (in our example, $J_{A'B}$) output by the previous stage (lines 14 and 18 of Algorithm 1). The details of how we construct a job in AsterixDB are described in section 6.3. The way a job is executed depends on the number of joins in the plan. If there is only one join, it means that we are still inside the looping part of the algorithm (line 14). To that end, we need to materialize the intermediate results of the job and at the same time gather statistics for them. In our example, plan $J_{A'B}$ has only one join - thereby the aforementioned procedure will be followed and the joined results of A' and B will be saved for future processing along with their statistics.

On the other hand, if the plan consists of two joins, it means that the dynamic optimization algorithm has been completed and the results of the job executed are returned back to the user (line 18 of Algorithm 1).

Online Statistics: For the statistics acquired by intermediate results, we use the same type of statistics as described in section 4. We only gather statistics on attributes that participate on subsequent join stages (and thus avoid collecting unnecessary

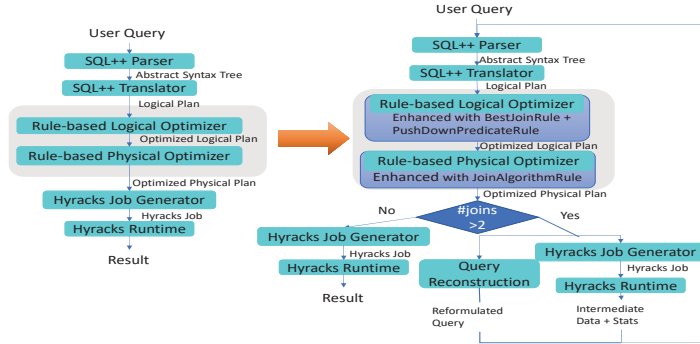


Figure 1: AsterixDB workflow without and with the integration of Dynamic Optimization

information). The online statistics framework is enabled in all the iterations except for the last one (i.e. the number of remaining datasets is three) since we know that we are not going to further re-optimize.

5.4 Query Reconstruction

The final step of the iterative approach is the reconstruction of the remaining query (line 13 of Algorithm 1). Given that there will be more re-optimization points (more than two joins remaining), we need to reformulate the remaining query since the part that participates in the job to be executed needs to be removed. The following issues need to be considered in this stage:

- The datasets participating in the output plan need to be removed (as they are not going to participate in the query anymore) and replaced by the intermediate joined result (lines 36-37).
- The join output by Planner needs to be removed (line 38).
- Any other clause of the original query influenced by the results of the job just constructed, needs to be reconstructed.

Following our example, the Planner has picked as optimal the join between A' and B datasets. Consequently this join is executed first; then, the joined result is stored for further processing and is represented by a new dataset that we call I_{AB} . In terms of the initial query, this will trigger changes in all its clauses. Particularly, in the select clause the projected column derives from one of the datasets participated in the subjob (A). Hence, after its execution, the projected column will now derive from the newly created dataset I_{AB} . In the FROM clause both A and B should be removed and replaced by I_{AB} . Finally, in the WHERE clause, the join executed has to be removed and if its result participates in any of the subsequent joins, a suitable adjustment has to be made. To this end, in our example B is joined with C in its c attribute. However, the c column is now part of I_{AB} . As a result, I_{AB} will now be joined with C. After these changes the reformatted query will look like this (Q_4):

```
select  $I_{AB}.a$ 
from  $I_{AB}, C', D$ 
```

where $I_{AB}.c = C'.c$ and $I_{AB}.d = D.d$;

Q_4 has only two joins, which means that the looping part of our algorithm has been completed and that once the Planner picks the optimal join order and algorithm the final job will be constructed and executed with its results returned to the user.

5.5 Discussion

By integrating multiple re-optimization points during mid-query execution and allowing complex predicate pre-processing, our

dynamic optimization approach can lead to much more accurate statistics and efficient query plans. Nevertheless, stopping the query before each re-optimization point and gathering online statistics to refine the remaining plan introduces some overhead. As we will see in the experimental section, this overhead is not significant and the benefits brought by the dynamic approach (i.e., avoiding a bad plan) exceed it by far. Note that here we focus on simple UDF predicates applied on the base datasets. For more expensive UDF predicates, plans that pull up their evaluation need to be considered [21]. Another interesting point unlocked by dynamic optimization is the forming of bushy join plans. Although they are considered to be expensive as both inputs of the join need to be constructed before the join begins in a parallel environment, they tend to be very efficient as they can open opportunities for smaller intermediate join results.

6 INTEGRATION INTO ASTERIXDB

As AsterixDB is supported by two other frameworks (Algebricks and Hyracks), there were multiple changes needed so as to integrate the dynamic optimization approach. The left side of Figure 1 represents the current query processing workflow of the AsterixDB framework, while the right side summarizes our changes. In particular, in the beginning the workflow behaves in the same way as always, with the exception of few additional rules integrated into the rule-based (JoinReOrderRule, PushDownPredicateRule) and physical-based (JoinAlgorithmRule) optimizer (**Planner**). Afterwards, depending on the number of joins participating in the query currently being processed, we either construct and execute the Hyracks job and output the result to the user as usual (only two joins) or we perform the following two steps (more than two joins):

- We introduce the **Query Reconstruction** phase where we reformulate the query currently being processed and we redirect it as new input to the SQL++ parser and the whole query process starts from the beginning once again.
- We construct a Hyracks job (**Job Construction**) by using various new operators introduced to allow materialization of the results of the query currently being processed along with connection of previously (if any) executed jobs.

6.1 Planner

If a dataset has more than one filter, the PushDownPredicateRule is triggered. This rule will push the filters down to their data-source and will remove the rest of the operators from the plan, leading to a modified plan of a simple select-project query (like Q_2 and Q_3 in section 5.1). On the other hand, if there is only

one filter, we estimate the filtered dataset cardinality based on histograms built on the base dataset.

Afterwards, the Planner stage will decide the optimal join order and algorithm. In order for the Planner to pick the join with the least cardinality, we enhanced the rule-based logical Optimizer (part of the Algebricks framework) with the JoinRe-OrderRule (see Figure 1). To further improve the efficiency of the execution plan, we integrated a rule in the rule-based physical Optimizer (Figure 1) that picks the most suitable join algorithm.

6.1.1 Join Ordering.

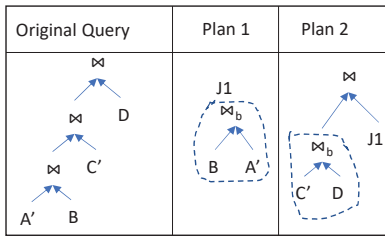


Figure 2: Planning Phase with Dynamic Optimization

The main goal of the join order rule is to figure out the join with the least cardinality. To that end, we identify all the individual joins along with the datasources (post-predicate execution) of their predicates. In this work, we focus only on joins as formed in the WHERE clause of the query. In the future, we plan to infer more possible joins according to correlations between join predicates. Afterwards, we apply formula 1 based on statistics (see Section 4) collected for the datasets and predicates involved in the join. Traditional optimizers that are based on static cost-based optimization need to form the complete plan from the beginning, meaning that we need to search among all different possible combinations of joins which can be very expensive depending on the number of base datasets. However, in the case of incremental optimization, it suffices to search for the cheapest join because the rest will be taken into consideration in the next iterations of our algorithm. In our example in Figure 2, in Q_1 the join between post-predicate A' and B will be estimated as the cheapest one and will be output from the Planner stage.

The second feature of this rule is triggered when there are only two joins left in the query and hence the statistics obtained up to that point suffice to figure out the best join order between them. Specifically as depicted in Plan 2 of Figure 2, in this case a two-way join (between three datasets) is constructed whose inputs are (1) the join (between two of the three datasets) with the least result size (estimated as described above) and (2) the remaining dataset.

It is worth noticing that in the first iteration of the approach the datasets that are joined are always among the base datasets. However, in the rest of the iterations, one or both of the joined datasets may be among the results from previous iterations. An example of that is shown in Plan 2 of Figure 2, where the right dataset of the final join is the result of the first iteration (J_1) of our algorithm.

6.1.2 Join Algorithm.

While hash join is the default algorithm, by having accurate information about the datasets participating in the corresponding join, the optimizer can make more efficient decisions. If one of the datasets is small enough, like A' and C' in our example (see

Figure 2), then it can be faster to broadcast the whole dataset and avoid potential reshuffling of a large dataset over the network.

Knowing that the cardinality of one of the datasets is small enough to be broadcast also opens opportunities for performing the indexed nested loop join algorithm as well. However, two more conditions are necessary to trigger this join algorithm. The first one is the presence of a secondary index on the join predicate of the "probe" side. The second condition refers to the case of primary/foreign key join and dictates that the dataset that gets broadcast must be filtered - thereby during the index lookup of a large dataset there will be no need for all the pages to be accessed.

6.2 Query Reconstruction

This stage is entered in one of the following cases: (1) the Planner has output a simple projection plan (predicate push down) or (2) the Planner output is a select-project-join plan (cheapest join). In both cases, we follow the process described in section 5.4 to reformulate the clauses of the input query and output the new query that will be given as input to the optimizer for the remaining iterations of our algorithm.

6.3 Job Construction

There are three different settings when creating a job:

- (1) When there are still re-optimizations to be scheduled (more than 2 joins), the output of the job has to be materialized for future use.
- (2) If one or both inputs of a job is a previously materialized job output, we need to form a connection between the jobs.
- (3) When the iterations are completed, the result of the last job will be returned to the user.

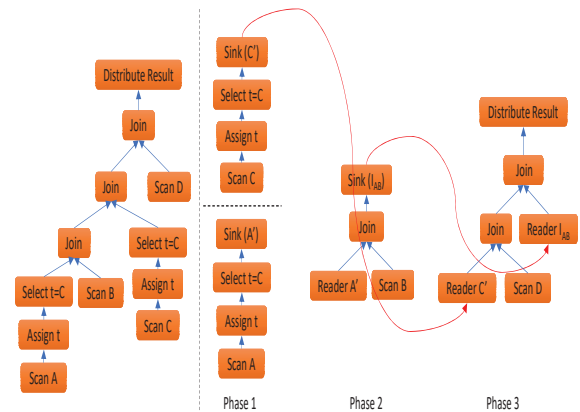


Figure 3: Original Hyracks job split into smaller jobs

We use the example in Figure 3 to illustrate the process we followed to satisfy the aforementioned cases. The left side of the figure depicts the usual job for the three-way join query (Q_1), where the final result is returned to the user via the DistributeResult operator. Instead, on the right side of the Figure (Phase 1), two subjobs are created which push down the UDF predicates applied to datasources A and C. Their results are the post-predicate versions of A and C (Sink(A') and Sink(C') accordingly). The Sink operator is responsible for materializing intermediate data while also gathering statistics on them.

In Phase 2, the subjob formed wraps the join between datasets A' and B, as this is the plan output by the Planner. Note that

the new operator introduced in this phase (Reader A') indicates that a datasource is not a base dataset. Instead, it is intermediate data created by a previous subjob. In our example, Reader A' represents the materialized data created in the previous phase by Sink(A'). Since the original query has not finished yet (remaining joins), the Sink operator will be triggered once again and it will store in a temporary file the joined results (I_{AB}), while at the same time it will collect the corresponding statistics.

Finally, the goal of Phase 3 is to wrap the output of the Planner which is a two-way join. The existence of two joins indicates that we are at the final iteration of the dynamic approach - thereby this job is the final one and its result should be returned to the user. Consequently, the DistributeResult operator re-appears in the job, as depicted in Figure 3.

6.4 Discussion

To integrate the dynamic optimization approach in the AsterixDB framework, we had to create an iterative workflow which gave us the opportunity to trigger multiple re-optimization points that result in more efficient query plans. In this work, we concentrate on multi-join queries which may also contain multiple and/or complex selection predicates. Although other types of operators may exist in the query, for now they are evaluated after all the joins and selections have been completed and traditional optimization has been applied. In the future, we plan to investigate more costly UDF predicates along with more complex queries (i.e. nested queries).

7 EXPERIMENTAL EVALUATION

We proceed with the performance evaluation of our proposed strategies and discuss the related trade-offs. The goals of our experiments are to: (1) evaluate the overheads associated with the materialize and aggregate statistics steps; (2) show that good join orders and methods can be accurately determined, and (3) exhibit the superior performance and accuracy over traditional optimizations. In particular, in the following experiments we compare the performance of our dynamic approach with: (i) AsterixDB with the worst-order, (ii) AsterixDB with the best-order (as submitted by the user), (iii) AsterixDB with static cost-based optimization, (iv) the pilot-run [25] approach, and (v) an INGRES-like approach [37]. Section 7.2 contains detailed explanations of each optimization approach.

Experimental Configuration: All experiments were carried out on a cluster of 10 AWS nodes, each with an Intel(R) Xeon(R) E5-2686 v4 @ 2.30GHz CPU (4cores), 16GB of RAM and 2TB SSD. The operating system is 64-bit Red-Hat 8.2.0. Every experiment was carried out five times and we calculated the average of the results.

Queries: We have explored the performance of our approach using multiple TPC-DS [2] and TPC-H [3] join queries. Here we present four representative queries from TPC-DS (Query 17 and Query 50) and TPC-H (Query 8 and Query 9). The actual queries are shown in Figure 4. Due to lack of space, the query SQL versions and the plans produced for all experiments are available in [30]. We chose these queries due to (1) their complexity (from a number of joins perspective) and (2) their variety in join conditions (primary/foreign key vs. fact-to-fact joins). The rest of the multi-way join queries in those benchmarks have similar join structures as these four queries. Moreover, several related works ([25, 28]) that also focused on dynamic join query execution used these same four queries in their experimental evaluations.

To better assess the effect of selection predicates on our runtime dynamic approach, we used modified versions of Queries 8, 9 and 50. Specifically, to consider multiple fixed value predicates, in Query 8 we added two (and correlated [38]) predicates on the *orders* table. We use Query 9 to examine the effect of UDFs (by adding various UDFs on top of the *part* and *orders* tables). Finally, in Query 50, we added two selections with parameterized values on top of one of the dimension tables.

For all of the scenarios we generate 3 TPC-DS and 3 TPC-H datasets with scale factors 10, 100, 1000. A scale factor of 1000 means that the cumulative size for the datasets involved in the specific query is 1TB. A small scale factor, like 10, was chosen for the purpose of emphasizing any overhead introduced by our approach for very small datasets. All the data is directly generated and then loaded into AsterixDB. It is also worth noting that we gain upfront statistics for the forming of the initial plan during the loading of the datasets in AsterixDB. This is only performed once and it is not part of the query execution process; thus the performance numbers reported in our results do not include that part. The loading times can vary from 10 minutes to 8 hours depending on the size of the datasets. However, as was shown in [5], the statistics collection overhead is minimal with respect to the loading time.

7.1 Overhead Considerations

In this section, we evaluate the overhead introduced to the AsterixDB execution time due to our dynamic optimization techniques, namely (1) introduction of re-optimization points, (2) gathering of statistics during runtime, and (3) separate execution of multiple/complex predicates. To this end, we report the execution times for the above four representative queries for scale factors 100 and 1000.

For the first two settings we perform the following three executions for each query. In the first execution we acquired all the statistics needed for forming the optimal execution plan by running our runtime dynamic optimization technique. Then, we re-executed the query by having the updated statistics for each dataset so that the optimal plan is found from the beginning. In the final execution, we enabled the re-optimization points but we removed the online statistics collection. That helped us assess the overhead coming from writing and reading materialized data. Finally, to evaluate the cost of online statistics gathering we simply deducted the third execution time (re-optimization) from the first one (whole dynamic optimization technique).

As seen in the left side of figure 5, for scale factor 100, the total re-optimization time is around 10% of the execution time for most queries, with the exception of Q50 which has only four joins leading to an overhead of 2%. Particularly, the four joins introduce two re-optimization points before the remaining query has only two joins and there is no need for further re-optimization. There is also a re-optimization in the beginning of this query introduced by the execution of the filtered dataset. However, this is insignificant as will be discussed later. For the scale factor of 1000, the overhead of re-optimization increases up to 15% for most queries, as the intermediate data produced are larger and thus the I/O cost introduced by reading and writing intermediate data is increased.

The online statistics collection brings a small overhead of 1% to 3% (scale factor 100) to the total execution time, as it is masked from the time we need to store and scan the intermediate data. Moreover, the extra time for statistics depends on the number of attributes for which we need to keep statistics for. Following

Query 17: $(\sigma_{m,y}(\text{date_dim})) \bowtie_{\text{dsk=rdsk}} \text{store_returns} \bowtie_{i=i,tn=tn,c=c} \text{store_sales} \bowtie_{s=s} \text{store} \bowtie_{\text{sdsd=dsk}} (\sigma_{m,y}(\text{date_dim})) \bowtie_{i=i} \text{item} \bowtie_{c=bc,i=i}$
 $\text{catalog_sales} \bowtie_{\text{sdsd=dsk}} (\sigma_{m,y}(\text{date_dim}))$
Query 50: $(\sigma_{y,m}(\text{date_dim})) \bowtie_{\text{dsk=rdsk}} \text{store_returns} \bowtie_{i=i,tn=tn,c=c} \text{store_sales} \bowtie_{\text{sdsd=dsk}} \text{date_dim} \bowtie_{s=s} \text{store}$,
with $y=\text{rand}(1998,200)$, $m=\text{rand}(8,10)$
Query 9: $(\sigma_b(\text{part}))_{k=k} \bowtie \text{lineitem} \bowtie_{\text{sk=sk}} \text{supplier} \bowtie_{\text{nk=nk}} \text{nation} \bowtie_{\text{sk=sk,pk=pk}} \text{part_sup} \bowtie_{\text{ok=ok}} (\sigma_{d,p}(\text{order}))$,
with $\sigma_b = (\text{mysub}(b) = \text{"\#3"})$, $\sigma_d = (\text{myyear}(d) = 1998)$
Query 8: $\text{lineitem} \bowtie_{\text{pk=pk}} (\sigma_t(\text{part})) \bowtie_{\text{sk=sk}} \text{supplier} \bowtie_{\text{ok=ok}} (\sigma_{d,s}(\text{order})) \bowtie_{\text{ck=ck}} \text{customer} \bowtie_{\text{nk=nk}} \text{nation} \bowtie_{\text{rk=rk}} (\sigma_n(\text{region})) \bowtie_{\text{nk=nk}} \text{nation}$

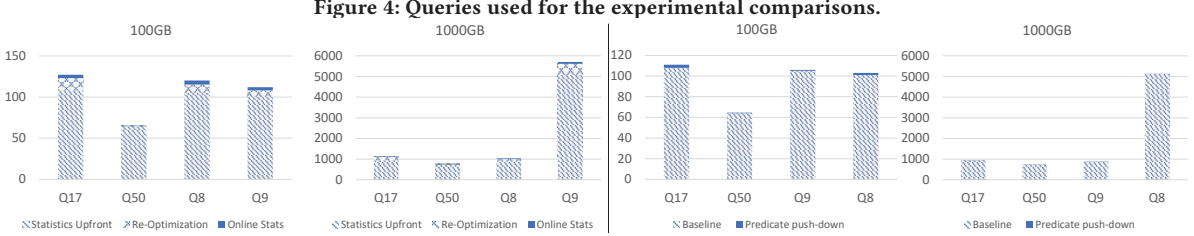


Figure 5: Overhead imposed by the multiple re-optimization points and the online statistics.

the example of Q50 as above, the statistics collection overhead is only 1% because it has the smallest number of join conditions. In scale factor 1000 the overhead of gathering statistics is increased, as the data upon which we collect statistics are larger in size, but it remains insignificant (up to 5%). Overall, we observe a total of 7-13% overhead for scale factor 100 and up to 20% for scale factor 1000. We believe that this is acceptable given the benefits brought by our approach, as will be shown in Section 7.2.

Finally, we assess the overhead of applying the incremental optimization approach to estimate the influences of multiple/complex predicates. For the base setup, we deactivated the multiple re-optimization points and executed the plan formed as if the right statistical data is available from the beginning. Then, the experiment was repeated by enabling the dynamic optimization only for materializing the intermediate results coming from pushing down and executing multiple predicates. The remaining query was executed based on the refined statistics coming from the latter step. As the results show (right side of figure 5), even in the case of Q17, where there are multiple filters present, the overhead does not exceed 3% of the total execution time, even for scale factor 1000. On the other hand, Q50 once again has the smallest overhead as there is only one dataset filtered.

7.2 Comparison of Execution Times

We proceed to evaluate our dynamic approach techniques against: (i) the join worst-order, (ii) the join best-order, (iii) a traditional cost-based optimization and (iv) the pilot-run method [25]. For the worst-order plan, we enforce a right-deep tree plan that schedules the joins in decreasing order of join result sizes (the size of the join results was computed during our optimization). The best-order plan assumes that the user knows the optimal order generated by our approach and uses that order in the FROM clause when writing the query. We also put some broadcast hints so the default optimizer can choose the broadcast algorithm. These two settings represent the least and the most gain, accordingly, that we can achieve with our approach against the default approaches of AsterixDB.

To compare with a traditional cost-based optimization approach, we collected statistics on the base datasets during the ingestion phase and we formed the complete execution plan at the beginning based on the collected statistics. When UDFs or parameters are present in a query we use the default selectivity factors as described in [31]. For the pilot-run method, we

gathered the initial statistics by running select-project queries (pilot-runs) on a sample of each of the base datasets participating in the submitted query. If there are predicates local to the datasets, they are included in the pilot-runs. In the sampling technique used in [25] during pilot runs, after k tuples have been output the job stops. To simulate that technique we enhanced our "pilot runs" with a LIMIT clause. Based on those statistics, an initial (complete) plan is formed and the execution of the original query begins until the next re-optimization point where the plan will be adjusted according to feedback acquired by online statistics.

Finally, for the INGRES-like approach we use the same approach as ours to decompose the initial query to single variable queries. However, the choice of the next best subquery to be executed is only based on dataset cardinalities (without other statistical information). Furthermore, in the original INGRES approach intermediate data are stored into a new relation; in our case we store it in a temporary file for simplicity. The experimental results are shown in Figure 6.

7.2.1 TPC-DS.

Query 17: This query has a total of 8 base tables (Figure 4). Three of those (i.e. dimension tables) are attached to selective filters and are used to prune down the three large fact tables, while *item* and *store* (i.e. smaller tables) are used for the construction of the final result. Our dynamic optimization approach will find that the optimal plan is a bushy tree, as dimension tables should be joined with the fact tables to prune down as much as possible the intermediate data. Then, they will be joined with each other to form the result. It is also worth noting that our approach will find that the dimension tables and *store* will be broadcast in all scale factors along with *item* in factors 10 and 100.

Given that there are no complex predicates, all other approaches (apart from the worst-order) will form similar bushy trees along with the suitable join algorithm in the appropriate cases. Hence, our dynamic optimization approach does not bring any further benefit (in fact there is a slight degradation, around 1.15-1.20x depending on the scale factor, against best-order due to the overhead introduced by re-optimization). Finally, the worst-order will join the fact tables first, resulting in very large intermediate results and a 5x slower performance.

Query 50: This query contains two dimension tables (*date_dim*) only one of which is filtered (with parameterized expressions), two large tables and *Store* that helps pruning down the final

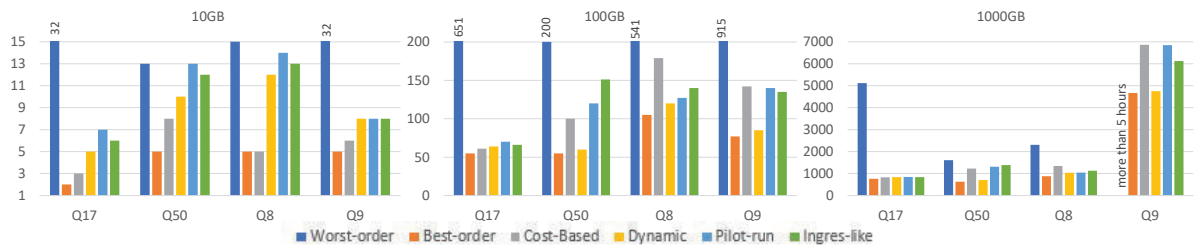


Figure 6: Comparison between Dynamic Optimization, traditional cost-based optimization, regular AsterixDB (join best-order vs worst-order), Pilot-run and Ingres-like

result. The optimal plan found by our dynamic approach first prunes down one of the fact tables by joining it with the filtered dimension table and then joins it with the other large table. Our approach is also able to choose the broadcast algorithm whenever appropriate (see Figure 8a). With the enhancement of broadcast hints, best-order will pick exactly the same execution plan, leading to slightly better performance than our dynamic approach (1.05, 1.1x for scale factors 100 and 1000).

Cost-based optimization results in a different plan because of the inaccurate cardinality estimates on the post-filtered dimension table and on the joined result between the fact tables. As a result, although it finds most of the broadcast joins, it leads to a 1.5x worse performance than our approach for scale factors 100 and 1000. A bushy tree will be formed by the INGRES-like approach due to its naive cost-model approach (considering only dataset cardinalities), resulting in an even worse performance. The worst-order of AsterixDB will trigger hash joins by default. On top of that, it will schedule the join between the fact tables in the beginning; thus it has the worst performance. Lastly, pilot-run makes the wrong decision concerning the join ordering between the large tables because of inaccurate statistics and thereby is around 1.8x slower than our approach.

7.2.2 TPC-H.

Query 9: The lineitem table is joined on foreign/primary key with four smaller tables and on foreign key with *part_sup*. Once again, our approach will find the optimal plan, which in this case is a bushy tree. Apart from the correct join-order, our techniques will pick the broadcast algorithm in the case of the *part* table for scale factors 10 and 100, as well as in the case of the joined result of *nation* and *supplier* tables (see Figure 8b). Cost-based optimization will find a similar bushy tree; however, due to wrong cardinality estimation, it will not broadcast the part table and the intermediate data produced by joining *nation* and *supplier* will only be broadcast for scale factor 10. As a result, our approach has a slightly better performance than the cost-based one. Similarly, the best-order will form the optimal execution plan leading to the best performance once again.

As with all the other queries, the worst-order will schedule the largest result producing joins in the beginning along with the hash algorithm, which will result in an execution time more than 5 hours. Hence, almost all techniques were 7x better than the worst-order. In the pilot-run case, once again, a suboptimal plan is chosen due to inaccurate unique cardinalities estimated by initial sampling. Finally, once again the INGRES-like approach will form a less efficient bushy tree since it focuses only on dataset cardinalities.

Query 8: This query has eight datasets in total. The lineitem table is a large fact table while all the others are smaller (three of them are filtered with multiple predicates). All the joins between the tables are between foreign/primary keys. Again our

approach manages to find the optimal plan (bushy join) as it uses the dynamic optimization techniques described above to calculate the sizes of base datasets after multiple-predicate filters are applied. The dynamic approach also gives the opportunity to the optimizer to choose the broadcast algorithm when appropriate, mainly for scale factors 10 and 100. Best-order will form the same execution plan (both in terms of join order and algorithm) as the dynamic approach and it will be more efficient since there is no re-optimization.

In the cost-based case, due to inaccurately estimated cardinalities on the post-filtered *orders* table, a different bushy plan is chosen. Although for scale factor 1000, the benefit of broadcast opportunities picked by the dynamic approach is not as noticeable as in the rest of the scale factors, it is still 1.3x faster than the cost-based one since it forms a better plan. Furthermore, pilot-run forms the same optimal plan as our approach, but because of the overhead introduced by pilot runs is slightly slower. The INGRES-like approach will focus only on dataset cardinalities and not on statistical information and thus it will find a suboptimal plan. Finally, the worst-order leads to a right-deep join with hash joins that can be up to 2.5x worse than our approach.

7.3 Considering Indexed Nested Loop Join

The last set of experiments examine the behavior of our approach when the Indexed Nested Loop Join (INLJ) is added as another possible join algorithm choice. We thus enhanced the TPC-H and TPC-DS datasets with a few secondary indexes on the attributes that participate in queries as join predicates and are not the primary keys of a dataset. The worst-order is excluded from these experiments since in the absence of hints, it will not choose INL; hence its execution time will not change. The results of these experiments are shown in Figure 7.

7.3.1 TPC-DS.

Query 17: In this particular query, there are 3 cases where the INL join will be picked by the dynamic approach for all scale factors. All of these cases are for the foreign/primary key joins between the large fact tables and the post-filtered dimension tables. In these particular cases the dimension tables are small enough to be broadcast but at the same time they have been filtered; hence not all pages of the large fact tables satisfy the join and need to be accessed. The same will happen with all the other approaches - thereby the execution time will be better in all cases. To that end, our dynamic approach will not bring any further benefit in this particular case.

Query 50: In this query, the dynamic approach will pick the INL join algorithm only in the case of the join between the filtered dimension table and the *store_returns* table. However, *store_returns* is not a very large table, and thus scanning it instead of performing an index lookup does not make a big difference; this

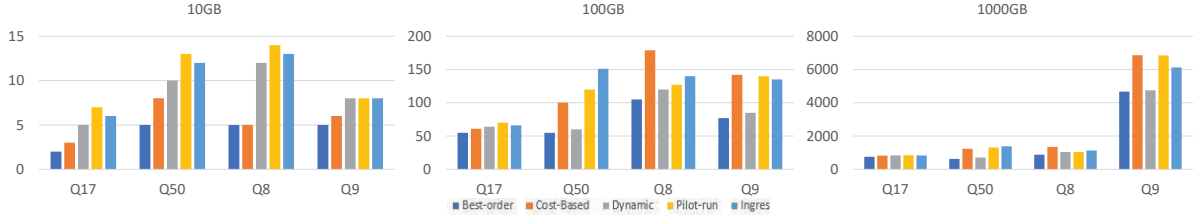
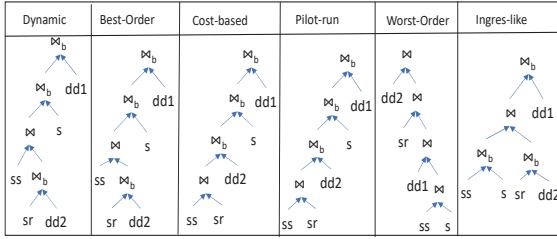
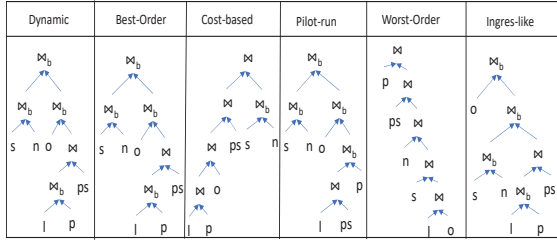


Figure 7: Comparison between Dynamic Optimization, traditional cost-based optimization, regular AsterixDB (join best-order vs worst-order), pilot-run and ingres-like when INL join is considered.



(a) Query 50



(b) Query 9

Figure 8: Plans Generated for: (a) Query 50 and (b) Query 9, of Figure 6 with scale factor 100.

results in a smaller improvement compared to the performance in the previous section. The INGRES-like approach similar to the dynamic one, will pick the INL join for *store_returns* \bowtie *date_dim* because *date_dim* is small enough to be broadcast (after it has been filtered) and *store_returns* has a secondary index on its join predicate. Finally, pilot-run and cost-based will miss the opportunity for choosing INL since the *store_returns* joined with the dimension table and derives from intermediate data; thus the needed secondary index does not exist anymore. Consequently, the difference in the performance against the dynamic approach is even bigger.

7.3.2 TPC-H.

Query 9: Dynamic optimization leads to the choice of INL for the join between *lineitem* and *part*. Thus, the query executes much faster than in the previous section. The same happens with all other approaches apart from the pilot-run in which, similarly to the previous query, *lineitem* does not have a secondary index anymore, thus leading to a performance degradation compared to the dynamic approach.

Query 8: This is a case where the INL cannot be triggered for any of the approaches. For example, in the cost-based approach, when *lineitem* and *part* are joined, although there is a secondary index on the *lineitem* predicate and *part* is filtered, the latter is not small enough to be broadcast. In the other approaches, in *supplier*

\bowtie *nation* the *nation* does not have a filter on it; hence, although all the other requirements are met, a simple broadcast will be better because scanning the whole dataset once is preferred to performing too many index lookups.

7.4 Discussion

The results of our evaluation showcase the superiority of our dynamic optimization approach against traditional optimization and state-of-the-art techniques, especially for joins that do not have key/foreign-key predicates. The real distribution of their results can be very different than the ones predicted by statistics collected only on base datasets. In such cases, collecting statistics on the intermediate results is necessary to calculate an accurate cost that will refine the remaining join ordering. It is worth mentioning that the best improvement is observed for the 100GB dataset size. When the base dataset is large enough, a wrong execution plan chosen by traditional optimizers is noticeable and at the same time the broadcast join has a higher possibility of being picked by our approach due to accurate selectivity estimations (post execution of predicates). For the 1000GB dataset size, we observed less improvement with our approach, as broadcast joins are limited, and the intermediate results are larger leading to a larger I/O cost. Nevertheless, we were still better than all the other approaches. For the 10GB size, we have the least improvement because the base datasets are very small in size and the overhead imposed by the intermediate data materialization is noticeable. A further interesting observation is that most of the optimal plans are bushy joins, meaning that even if both inputs have to be constructed before the join is performed, forming the smaller intermediate join results brings more benefits to the query execution.

With respect to the overhead derived by our dynamic optimization techniques, we note that although in the worst case (scale factor 1000) the cost can be expensive, in most cases our plans are still faster than the plans produced by traditional optimizers.

8 CONCLUSIONS

In this paper we have investigated the benefits of using dynamic query optimization in big data management systems. We described how we decompose a submitted query into several sub-queries with the ultimate goal of integrating re-optimization points to gather statistics on intermediate data and refine the plan for the remaining query. Although our work concentrates on complex join queries, we also treat multiple selective predicates and predicates with parameterized values and UDFs, as part of the re-optimization process. That way, in addition to the benefit of gathering information about the cardinality of intermediate data, we also get more accurate estimations about the sizes of filtered base datasets. We chose AsterixDB to implement our techniques as it is a scalable BDMS optimized to execute joins

in a pipeline. We were able to show that, even though it blocks the pipelining feature and introduces intermediate results, our approach still almost always gives the best performance.

We evaluated our work by measuring the execution time of different queries and comparing our techniques against traditional static cost-based optimization and the default AsterixDB query execution approach and we proved its superiority. When querying big data, it pays to get good statistics by allowing re-optimization points since a small error in estimating the size of a big dataset can have much more drastic consequences on query performance than the overhead introduced. Nevertheless, our approach performs at its best when complex predicates are applied to the base datasets of a query or the join conditions are between fact tables (leading to skewness in selectivity and join result estimation accordingly).

In future research we will explore ways to address more complex UDFs in our dynamic optimization approach. Further, we want to exploit the benefits of dynamic optimization when other operators (i.e. group-by, order by, etc.) are included in the query, or when subqueries are present, which is itself a challenging research problem. Although more re-optimization points make our technique more accurate and robust, they also increase its overhead. Consequently, it would be interesting to explore (through a cost model) the trade-off of facilitating dynamic optimization but with fewer re-optimizations while still obtaining sufficiently accurate results. Finally, another future direction is to use the re-optimization points as a way to achieve fault-tolerance, by treating them as points to fall back in case that a long-running query crashes.

Acknowledgements: This research was partially supported by NSF grants IIS-1838222, IIS-1838248 which also provided for AWS usage credit.

REFERENCES

- [1] 2020. *Apache AsterixDB*. <https://asterixdb.apache.org/about.html>
- [2] 2020. *TPCDS*. <http://www.tpc.org/tpcds/>
- [3] 2020. *TPCH*. <http://www.tpc.org/tpch/>
- [4] Riham Abdel Kader, Peter Boncz, Stefan Manegold, and Maurice Van Keulen. 2009. ROX: run-time optimization of XQueries. In *Proceedings of the 2009 ACM SIGMOD Conference*. 615–626.
- [5] Ildar Absalyamov. 2018. *Query Processing and Cardinality Estimation in Modern Database Systems*. Ph.D. Dissertation. University of California, Riverside.
- [6] Sameer Agarwal, Srikanth Kandula, Nico Bruno, Ming-Chuan Wu, Ion Stoica, and Jingren Zhou. 2012. Reoptimizing data parallel computing. In *Presented as part of the 9th {USENIX} Symposium on Networked Systems Design and Implementation ({NSDI} 12)*. 281–294.
- [7] Sattam Alsubaiee, Yasser Altowim, Hotham Altowim, Alexander Behm, Vinayak Borkar, Yingyi Bu, Michael Carey, Inci Cetindil, Madhusudan Cheelangi, Khurram Faraaz, et al. 2014. AsterixDB: A scalable, open source BDMS. *Proceedings of the VLDB Endowment* 7, 14 (2014), 1905–1916.
- [8] Morton M. Astrahan, Mike W. Blasgen, Donald D. Chamberlin, Kapali P. Eswaran, Jim N Gray, Patricia P. Griffiths, W Frank King, Raymond A. Lorie, Paul R. McJones, James W. Mehl, et al. 1976. System R: relational approach to database management. *ACM Transactions on Database Systems (TODS)* 1, 2 (1976), 97–137.
- [9] Ron Avnur and Joseph M Hellerstein. 2000. Eddies: Continuously adaptive query processing. In *Proceedings of the 2000 ACM SIGMOD International Conference on Management of Data*. 261–272.
- [10] Shivnath Babu, Pedro Bizarro, and David DeWitt. 2005. Proactive re-optimization. In *Proceedings of the 2005 ACM SIGMOD international conference on Management of data*. ACM, 107–118.
- [11] Shivnath Babu and Herodotos Herodotou. 2013. Massively parallel databases and mapreduce systems. *Foundations and Trends® in Databases* (2013).
- [12] Vinayak Borkar, Yingyi Bu, E Preston Carman Jr, Nicola Onose, Till Westmann, Pouria Pirzadeh, Michael J Carey, and Vassilis J Tsotras. 2015. Algebricks: a data model-agnostic compiler backend for Big Data languages. In *Proceedings of 6th ACM Symposium on Cloud Computing*. 422–433.
- [13] Vinayak Borkar, Michael Carey, Raman Grover, Nicola Onose, and Rares Vernica. 2011. Hyracks: A flexible and extensible foundation for data-intensive computing. In *27th International Conference on Data Engineering*. 1151–1162.
- [14] Nicolas Bruno, Sapna Jain, and Jingren Zhou. 2013. Continuous cloud-scale query optimization and processing. *Proceedings of the VLDB Endowment* 6, 11 (2013), 961–972.
- [15] Surajit Chaudhuri and Kyuseok Shim. 1999. Optimization of queries with user-defined predicates. *ACM Transactions on Database Systems (TODS)* 24, 2 (1999), 177–228.
- [16] Jack Chen, Samir Jindel, Robert Walzer, Rajkumar Sen, Nika Jimsheleishvili, and Michael Andrews. 2016. The MemSQL Query Optimizer: A modern optimizer for real-time analytics in a distributed database. *Proceedings of the VLDB Endowment* 9, 13 (2016), 1401–1412.
- [17] Amol Deshpande, Zachary Ives, Vijayshankar Raman, et al. 2007. Adaptive query processing. *Foundations and Trends® in Databases* 1, 1 (2007), 1–140.
- [18] Goetz Graefe. 1995. The Cascades framework for query optimization. *IEEE Data Eng. Bull.* 18, 3 (1995), 19–29.
- [19] Goetz Graefe and David J DeWitt. 1987. The EXODUS optimizer generator. In *Proceedings of the 1987 ACM SIGMOD International Conference on Management of Data*. 160–172.
- [20] Goetz Graefe and William J McKenna. 1993. The volcano optimizer generator: Extensibility and efficient search. In *Proceedings of IEEE 9th International Conference on Data Engineering*. IEEE, 209–218.
- [21] Joseph M Hellerstein. 1998. Optimization techniques for queries with expensive methods. *ACM Transactions on Database Systems (TODS)* 23, 2 (1998), 113–157.
- [22] Ihab F Ilyas, Volker Markl, Peter Haas, Paul Brown, and Ashraf Aboulmaga. 2004. CORDS: automatic discovery of correlations and soft functional dependencies. In *Proceedings of the 2004 ACM SIGMOD international conference on Management of data*. 647–658.
- [23] Yannis E Ioannidis and Stavros Christodoulakis. 1991. On the propagation of errors in the size of join results. In *Proceedings of the 1991 ACM SIGMOD international conference on Management of data*. 268–277.
- [24] Navin Kabra and David J DeWitt. 1998. Efficient mid-query re-optimization of sub-optimal query execution plans. In *Proceedings of the 1998 ACM SIGMOD International Conference on Management of Data*. 106–117.
- [25] Konstantinos Karanasos, Andrey Balmin, Marcel Kutsch, Fatma Ozcan, Vuk Ercegovic, Chunyang Xia, and Jesse Jackson. 2014. Dynamically optimizing queries over large scale data platforms. In *Proceedings of the 2014 ACM SIGMOD International Conference on Management of Data*. ACM, 943–954.
- [26] Qifa Ke, Michael Isard, and Yuan Yu. 2013. Optimus: a dynamic rewriting framework for data-parallel execution plans. In *Proceedings of the 8th ACM European Conference on Computer Systems*. ACM, 15–28.
- [27] Andrew Lamb, Matt Fuller, Ramakrishna Varadarajan, Nga Tran, Ben Vandier, Lyric Doshi, and Chuck Bear. 2012. The Vertica analytic database: C-store 7 years later. *arXiv preprint arXiv:1208.4173* (2012).
- [28] Youfu Li, Mingda Li, Ling Ding, and Matteo Interlandi. 2018. RIOS: Runtime Integrated Optimizer for Spark. In *SoCC*. 275–287.
- [29] Frédéric Meunier, Olivier Gandouet, Eric Fusy, and Philippe Flajolet. 2007. HyperLogLog: the analysis of a near-optimal cardinality estimation algorithm. *Discrete Mathematics & Theoretical Computer Science* (2007).
- [30] Christina Pavlopoulou, Michael J Carey, and Vassilis J Tsotras. 2020. Revisiting Runtime Dynamic Optimization for Join Queries in Big Data Management Systems. *arXiv preprint arXiv:2010.00728* (2020).
- [31] P Griffiths Selinger, Morton M Astrahan, Donald D Chamberlin, Raymond A Lorie, and Thomas G Price. 1979. Access path selection in a relational database management system. In *Proceedings of the 1979 ACM SIGMOD international conference on Management of data*. 23–34.
- [32] Sourav Sikdar and Chris Jermaine. 2020. MONSOON: Multi-Step Optimization and Execution of Queries with Partially Obscured Predicates. In *Proceedings of the 2020 ACM SIGMOD Conference*. 225–240.
- [33] Mohamed A Soliman, Lyublena Antova, Venkatesh Raghavan, Amr El-Helw, Zhongxian Gu, Entong Shen, George C Caragea, Carlos Garcia-Alvarado, Foyzur Rahman, Michalis Petropoulos, et al. 2014. Orca: a modular query optimizer architecture for big data. In *Proceedings of the 2014 ACM SIGMOD International Conference on Management of Data*. 337–348.
- [34] Michael Stillger, Guy M Lohman, Volker Markl, and Mokhtar Kandil. 2001. LEO-DB2’s learning optimizer. In *VLDB Conference*, Vol. 1. 19–28.
- [35] Immanuel Trummer and Christoph Koch. 2016. Parallelizing query optimization on shared-nothing architectures. *Proceedings of the VLDB Endowment* 9, 9 (2016), 660–671.
- [36] Lu Wang, Ge Luo, Ke Yi, and Graham Cormode. 2013. Quantiles over data streams: an experimental study. In *Proceedings of the 2013 ACM SIGMOD International Conference on Management of Data*. 737–748.
- [37] Eugene Wong and Karel Youssefi. 1976. Decomposition—a strategy for query processing. *ACM Transactions on Database Systems (TODS)* 1, 3 (1976), 223–241.
- [38] Meihui Zhang, Marios Hadjieleftheriou, Beng Chin Ooi, Cecilia M Procopiuc, and Divesh Srivastava. 2011. Automatic discovery of attributes in relational databases. In *Proceedings of the 2011 ACM SIGMOD International Conference on Management of data*. 109–120.
- [39] Jingren Zhou, Nicolas Bruno, Ming-Chuan Wu, Per-Ake Larson, Ronnie Chaiken, and Darren Shakib. 2012. SCOPE: parallel databases meet MapReduce. *The VLDB Journal* 21, 5 (2012), 611–636.