



The logo for 'A Christmas Story The Musical' is centered on a dark background with a repeating pattern of small, light-colored Christmas trees. The title 'A CHRISTMAS STORY' is written in a large, stylized, metallic, 3D font. Below it, 'The Musical' is written in a smaller, elegant, cursive script.

BONUS PRODUCTION

HADESTOWN

Music, Lyrics & Book by Anaïs Mitchell (she/her)
Developed with & Directed by Rachel Chavkin (she/her)

OCTOBER 3–15, 2023

A CHRISTMAS STORY, THE MUSICAL

Book by Joseph Robinette
Music and Lyrics by Benj Pasek and Justin Paul
Original Direction on Broadway by John Rando
Choreography by Warren Carlyle
Directed by Matt Lenz

DECEMBER 5–31, 2023

MATTHEW BOURNE'S ROMEO + JULIET

Music by Terry Davies based on the original score by Sergei Prokofiev
Directed and Choreographed by Matthew Bourne
In collaboration with the New Adventures artistic team
North American Premiere

JANUARY 28–FEBRUARY 25, 2024

FUNNY GIRL

Music by Jule Styne
Lyrics by Bob Merrill
Book by Isobel Lennart

APRIL 2-28, 2024

A STRANGE LOOP

Book, Music, And Lyrics by Michael R. Jackson
Choreography by Raja Feather Kelly
Directed by Stephen Brackett
A co-production with American Conservatory Theatre

JUNE 5-30, 2024

CLUE

Written by Sandy Rustin
Additional Material by Hunter Foster and Eric Price
Based on the screenplay by Jonathan Lynn
Original Music by Michael Holland
Based on the 1985 Paramount movie
and the classic Hasbro board game

JULY 30–AUGUST 25, 2024

friend.
insider.
visionary.

you!

YOUR MEMBERSHIP EXPERIENCE
AT CENTER THEATRE GROUP

As a nonprofit organization, Center Theatre Group relies on the support of generous theatre-lovers like you. Become a member with a tax-deductible contribution of \$100—or just \$10 per month—and make a vital difference for our future following the most challenging period in Center Theatre Group's history. Your gift will enable us to continue to produce and present the highest caliber theatre, nurture new artists, and provide transformative arts education programs.

Plus, your gift will unlock membership benefits to enhance your theatregoing experience, from priority ticket access to members-only events and more!

Learn more at CTGLA.org/membership



SCAN HERE TO SUPPORT
CENTER THEATRE GROUP NOW

QUESTIONS?

Call our Membership Concierge
at 213.972.7564 or email membership@CTGLA.org



friends

Friends get first access to tickets before the general public plus invitations to members-only events, including tours and rehearsals. *Join today with a gift of \$100 or more—or just \$10 per month.*

insiders

Insiders enjoy a year-round VIP experience with access to the best seats for our shows, concierge service for house seats at New York and London productions, and special behind-the-scenes events. *Join today with a gift of \$2,500 or more.*

visionaries

Visionaries have the ultimate access to our artists, shows, programs, and staff, with premium seating for our productions, including use of The Founders' Room at the Ahmanson, and invitations to private salon-style artist events. *Join today with a gift of \$15,000 or more.*



SNEHAL DESAI Artistic Director | MEGHAN PRESSMAN Managing Director/CEO | DOUGLAS C. BAKER Producing Director
GORDON DAVIDSON Founding Artistic Director

Center Theatre Group
By special arrangement with Big League Productions, Inc
Presents



Book by
JOSEPH ROBINETTE

Music and Lyrics By
BENJ PASEK AND JUSTIN PAUL

Based upon the motion picture *A Christmas Story*® 1983 Turner Entertainment Co., distributed by Warner Bros. written by Jean Shepherd, Leigh Brown and Bob Clark and *In God We Trust: All Others Pay Cash* by Jean Shepherd. Produced with permission of Warner Bros. Theatre Ventures, Inc. and Dalfie Entertainment, Inc.

STEVEN-ADAM AGDEPPA ZEKE BERNIER ADDALIE BURNS CHRIS CARSTEN JACK CASEY
JORDAN COATES KAI EDGAR GABBIE FRIED ANDREW GE JULIANE GODFREY JULIA HARNETT
MICHAEL JAMES GRETA REBECCA KLEINMAN KAYDEN ALEXANDER KOSHELEV
TRENT MILLS KYLE MONTGOMERY GABRIEL NAVARRO EMILIE ONG JANE PAPAGEORGE
ERIC PETERSEN JACOB PHAM IZZY PIKE SHELLEY REGNER SABRINA SLOAN CHARLIE STOVER HENRY WITCHER

Scenic Design based upon
the Original Broadway
Scenic Design by
WALT SPANGLER

Costume Design based on the
Original Broadway
Costume Design by
ELIZABETH HOPE CLANCY

Lighting Design based on
the Original Broadway
Lighting Design by
HOWELL BINKLEY

Scenic Design Adaptation by:
MICHAEL CARNAHAN

Ahmanson Theatre
Lighting Design by:
CHARLIE MORRISON

Sound Design by:
BRIAN HSIEH

Orchestrations by:
LARRY BLANK

Animal Trainer:
WILLIAM BERLONI

Costing by:
ALISON FRANCK, CSA

Dance/Musical Arrangements:
GLEN KELLY

Vocal Arrangements by:
JUSTIN PAUL

Associate Director
MICHAEL RADER

Technical Supervisor:
JAMES BOOK

General Management:
BIG LEAGUE PRODUCTIONS
ZACH KROHN

Production Stage Manager:
JILL GOLD

Executive Producer
DANIEL SHER

Originally Directed on Broadway by:
JOHN RANDO

Associate Choreographer
BROOKE MARTINO

Musical Supervisor:
ANDREW SMITHSON

Choreography by:
WARREN CARLYLE

Directed by
MATT LENZ

Produced by special arrangement with DRAMATIC PUBLISHING, Woodstock, Illinois.

Originally produced on Broadway by:
Gerald Goehring Roy Miller Michael F. Mitrí Pat Flicker Addiss Peter Billingsley
Timothy Laczynski Mariano Tolentino Jr. Louise Beard Michael Filerman Scott Hart
Allison Eckert Bob Bartner Michael Jenkins Angelo Milonas Bradford W. Smith

DECEMBER 5—31, 2023 AHMANSONTHEATRE

CAST

(in order of appearance)

Jean Shepherd CHRIS CARSTEN
Ralphie..... KAI EDGAR
Mother..... SABRINA SLOAN
Randy..... HENRY WITCHER
The Old Man ERIC PETERSEN
The Bumpus Hounds REBA, JETHRO
Schwartz..... KAYDEN ALEXANDER KOSHELEV
Flick..... JACK CASEY
Esther Jane..... ADDALIE BURNS
Mary Beth..... IZZY PIKE
Nancy..... GRETA REBECCA KLEINMAN
Carol EMILIE ONG
Scut Farkus..... JORDAN COATES
Grover Dill..... ZEKE BERNIER
Miss Shields SHELLEY REGNER
Fantasy Villain..... KYLE MONTGOMERY
Bank Teller..... KAYDEN ALEXANDER KOSHELEV
Bank Robbers..... MICHAEL JAMES, GABRIEL NAVARRO
Convict..... MICHAEL JAMES
Can Can Dancers ADDALIE BURNS, GRETA REBECCA KLEINMAN, IZZY PIKE
Delivery Men GABRIEL NAVARRO, TRENT MILLS
Policeman..... MICHAEL JAMES
Fireman GABRIEL NAVARRO
Doctor ANDREW GE
Nurse JULIA HARNETT
Flick's Mother GABBIE FRIED
Mobster Tap Specialty ADDALIE BURNS
Santa Claus..... KYLE MONTGOMERY
Chief Elf GABBIE FRIED
Goggles Kid..... ZEKE BERNIER
Waiter..... ANDREW GE
Waitress..... EMILIE ONG
Neighbors, Shoppers, Parents, Students
Townsppeople, Elves, and Others ZEKE BERNIER, ADDALIE BURNS, JACK CASEY,
JORDAN COATES, GABBIE FRIED, ANDREW GE, JULIANE GODFREY,
JULIA HARNETT, MICHAEL JAMES, GRETA REBECCA KLEINMAN,
KAYDEN ALEXANDER KOSHELEV, TRENT MILLS, KYLE MONTGOMERY,
GABRIEL NAVARRO, EMILIE ONG, JACOB PHAM,
IZZY PIKE, SHELLEY REGNER, CHARLIE STOVER

Please turn off all electronic devices such as cellular phones and watch alarms. The use of any recording device, either audio or video, and the taking of photographs, with or without flash, are strictly prohibited.

CAST

STAGE MANAGERS

MICHELLE BLAIR
EDWARD KHRIS FERNANDEZ

DANCE CAPTAIN

JANE PAPAGEORGE

SWINGS

STEVEN-ADAM AGDEPPA, JANE PAPAGEORGE, JACOB PHAM

UNDERSTUDIES

For Jean Shepherd —TRENT MILLS
For Ralphie—CHARLIE STOVER
For Mother—JULIANE GODFREY
For Randy—ZEKE BERNIER, JACOB PHAM
For The Old Man—TRENT MILLS
For Schwartz—JACK CASEY, CHARLIE STOVER
For Flick—JACOB PHAM
For Scut Farkus—JACK CASEY, KAYDEN ALEXANDER KOSHELEV, CHARLIE STOVER
For Grover Dill—CHARLIE STOVER, JACOB PHAM
For Miss Shields—JANE PAPAGEORGE
For Santa Claus—TRENT MILLS
For Waiter—JACOB PHAM

THERE WILL BE ONE 15-MINUTE INTERMISSION.

Latecomers will be seated at the discretion of management. Patrons with disabilities: wheelchair seating is available in a variety of theatre locations. When ordering tickets, please indicate any special needs. For our hearing-impaired guests, the theatre is equipped with listening devices; please contact an usher for assistance.

CAST



STEVEN-ADAM
AGDEPPA



ZEKE
BERNIER



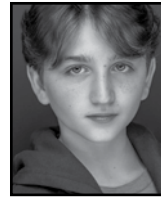
ADDALIE
BURNS



CHRIS
CARSTEN



JACK
CASEY



JORDAN
COATES



KAI
EDGAR



GABBIE
FRIED



ANDREW
GE



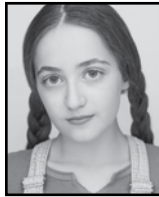
JULIANE
GODFREY



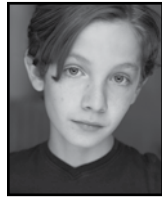
JULIA
HARNETT



MICHAEL
JAMES



GRETA REBECCA
KLEINMAN



KAYDEN ALEXANDER
KOSHELEV



TRENT
MILLS



KYLE
MONTGOMERY



GABRIEL
NAVARRO



EMILIE
ONG



JANE
PAPAGEORGE



ERIC
PETERSEN



JACOB
PHAM



IZZY
PIKE



SHELLEY
REGNER



SABRINA
SLOAN



CHARLIE
STOVER



HENRY
WITCHER

SCENES AND MUSICAL NUMBERS

ACT I

Overture..... Orchestra

Prologue: Outside radio station WOR, New York City/the radio studio desk — Christmas Eve, Several Years Ago

Scene 1: The Parker Family House and Higbee's Department Store — December 1, 1940
 "It All Comes Down to Christmas" Ralphie, The Parkers, Ensemble
 "Red Ryder Carbine Action BB Gun" Ralphie, Jean
 "It All Comes Down to Christmas (Reprise)" Ralphie, Ensemble

Scene 2: The Parker Family House — The Next Day
 "The Genius on Cleveland Street" The Old Man, Mother

Scene 3: A Path Leading to School — Soon Afterward
 "When You're A Wimp" Kids

Scene 4: The Classroom — A Few Minutes Later
 "Ralphie to the Rescue!" Ralphie, Miss Shields, The Old Man, Mother, Randy, Ensemble

Scene 5: The Parker Family House — A Week Later
 "What a Mother Does" Mother
 "A Major Award" The Old Man, Mother, Neighbors

Scene 6: The Parker Family House — Early Evening of December 13, 1940

Scene 7: On the Road — Immediately Following
 "Parker Family Singalong" The Parkers

Scene 8: The Parker Family House — Late That Night
 "Act I Finale" Ralphie, Mother, Old Man, Randy, Ensemble

ACT II

Entr'Acte. Orchestra

Scene 1: The Schoolyard and The Classroom
 "Sticky Situation" Ralphie, Flick, Schwartz, Kids, Miss Shields, Nurse, Flick's Mom, Fireman, Policeman, Doctor

Scene 2: Fantasy 1930's Speakeasy
"You'll Shoot Your Eye Out" Miss Shields, Kids

Scene 3: A Path From School — Immediately Following

Scene 4: The Parker Family House — A Few Minutes Later
"Just Like That" Mother

Scene 5: Santa's Station at Higbee's — Christmas Eve
"At Higbee's" Elves
"Up on Santa's Lap" Santa Claus, Elves, Ralphie, Randy, Kids

Scene 6: The Parker Family House — Christmas Eve
"Before The Old Man Comes Home" The Parkers

Scene 7: The Boys' Bedroom
"Somewhere Hovering Over Indiana"Ralphie, Randy, Kids

Scene 8: The Parker Family House — Christmas Morning
"It's Christmas" Ralphie, Randy
"Ralphie to the Rescue (Reprise)" Ralphie, Ensemble

Scene 9: A Chinese Restaurant and the Town - Christmas Evening
"A Christmas Story" The Parkers and Full Company

ORCHESTRA

MUSIC DIRECTOR, KEYBOARD 2—ANDREW SMITHSON
ASSISTANT MUSIC DIRECTOR, KEYBOARD 1—BRAD GARDNER
REED 1—SAL LOZANO
REED 2—NOELLE FABIAN
REED 3—RUSTY HIGGINS
TRUMPET 1—DAN FORNERO
TRUMPET 2—JAMES FORD
TROMBONE 1—RAUL NAVARETTE
BASS TROMBONE—STEVEN TRAPANI
BASS—WILLIAM JOHNSON
DRUMS—BRIAN MALONE
PERCUSSION—JORDAN CURCURUTO
KEYBOARD SUB—JENNIFER LIN
MUSIC CONTRACTOR—ROBERT PAYNE

WHO'S WHO

STEVEN-ADAM AGDEPPA (*Swing; he/they*). Steven is excited to make their Ahmanson stage debut! Credits: *On This Side of the World*, *Mamma Mia* (East West Players); *Grease, Cats, Newsies, In the Heights* (La Mirada); *Invincible: The Pat Benetar and Neil Geraldo Musical*; *The Music Man* (Musical Theater West). Gratitude to the creative team, Go2Talent, and Nicky!

ZEKE BERNIER (*Grover Dill, U/S Randy, Ensemble; he/him*). Zeke is excited to be a part of *A Christmas Story* at the Ahmanson. Zeke loves performing and began in musical theatre at age 5. He has worked on film, television, commercials, print/internet projects, theatre, and hosted events. Zeke enjoys making videos, martial arts, dance parties, and being with his friends.

ADDALIE BURNS (*Esther Jane, Tap Specialty; she/her*) is delighted to be making her CTGLA debut! Credits: *Music Man* (Amaryllis) (Broadway at Music Circus), *Carousel* (Broadway at Music Circus), the National Philharmonic, American Pops Orchestra, Birdland Jazz Club, New York Theatre Workshop. "Thank you Luke Hawkins, Noah J. Ricketts, Annette Tanner/ Broadway Dreams Foundation." IG:@tappingadds

CHRIS CARSTEN (*Jean Shepherd, he/him*). Mr. Carsten is a relatively unknown commodity who is absolutely delighted to continue a long tradition of portraying Jean Shepherd over the holidays! Since 2014, he has performed for audiences across the country as the iconic non disembodied narrator of the musical version of this beloved Christmas classic, perhaps more than any other actor to date! Over the years he has appeared in touring productions spanning the globe. Some of his favorite roles include John Adams in *1776*, Henry Higgins in *My Fair Lady*, and the title role in William Shakespeare's *Hamlet*. He would like to thank Maisie, Evangeline, and Finley for their love and support.

JACK CASEY (*Flick, Ensemble, U/S Scut Farkus; he/him*). Jack has appeared on Broadway as The Little Boy Edgar in *Ragtime's 25th Anniversary Concert*. Rufus in the world premiere of the Ahrens/Flaherty musical, *Knoxville* at Asolo Rep, directed by the late Frank Galati. Original Cast Album of *Knoxville*. TV/FILM: Dylan Shakes, Amazon Prime's *Harlan Coben's Shelter, Bruno, The Nonnas, Law & Order: SVU, The Marvelous Mrs. Maisel*. Jack is honored to make his Ahmanson debut, and thanks his brother Finn Douglas, his mother Annie, his dad, Miss Bev, Jackie Reid, everyone in his Christmas Story Family, and the magic of Christmas. @jackcaseyactor

JORDAN COATES (*Scut Farkus, Ensemble*). Jordan is thrilled to be telling this story again at the Ahmanson! Theatre: *Evita ACT; Billy Elliot* (Michael) Rhinebeck Theater; *A Christmas Story* (Schwartz) Tuacahn and Engeman Theater. TV/VO: *Invasion*

(Jack), Apple TV+; *Mr. Robot* (Kyle), USA; Awkwafina's *Nora is From Queens* (Team Cpt #2), Comedy Central; *Paw Patrol* (Rubble), Nick Jr. Mom, Dad, Jack, this is for you. @Jordancoates

KAI EDGAR (*Ralphie, he/him*). Excited for this bucket list role! Favorite credits: *Charlie & the Chocolate Factory* (National Tour), *The Hours* (Metropolitan Opera), *The Secret Garden* (Broadway at Music Circus), *Pelléas et Mélisande* (LA Opera, Santa Fe Opera), *Chicago Fire, Firebuds, Santiago of the Seas*. Thanks to the creative team, DDO Kids, Station 3, and his amazing coaches. @kaijosephedgar

GABBIE FRIED (*Ensemble, she/her*). Center Theatre Group debut. Regional: Enid in *Legally Blonde, Grease, Hairspray* (KC Starlight), *Footloose* (Cortland Rep), *Spring Awakening* (Hangar Theatre), *Les Misérables, The Little Mermaid* (Sharon Playhouse). TV: *Drew Barrymore Show*. Gabbie's a Jewish Comedian from Kansas City, she now performs comedy around L.A. Education: NYU Tisch (Atlantic), UCB, and Groundlings. @goobiefried

ANDREW GE (*Waiter, Ensemble; he/him*). Theatre: *Mamma Mia!* (East West Players), *Cinderella* (5-Star Theatricals), *Shanghai's World Emporium* (Huntington Library), *Arcane* (Secret Cinema/Riot Games). TV/Film: *The Slumber Party* (Yo Fiest), *Blue Suit* (Wong Fu Presents), *Beneath The Banyan Tree* (VOD). Voice: *The Devil's Plan* (Netflix), *Dream* (Netflix), *Girl From Nowhere* (Netflix). Certified matcha snob. @thisisge

JULIANE GODFREY (*Ensemble, U/S Mother; she/her*) Broadway: *SpongeBob SquarePants: The Musical* (OBC Dance Captain/Swing). National Tours: *Beetlejuice*, Lincoln Center's *My Fair Lady, Something Rotten!* Regional: Goodspeed, Paper Mill Playhouse, Arena Stage, Sacramento Music Circus, and more. Solo Show: *I Won't Dance (Don't Make Me Sing)* (Bourbon Room). Arts educator, Maker of Art + Heart, UCLA alum. @julianegodfrey

JULIA HARNETT (*Ensemble, she/her*). Recently seen in *Guys & Dolls* at The Kennedy Center and *Cabaret* at Barrington Stage. Selected Theatre Credits: *Chicago* (Fulton Theatre), *In The Heights* (Arts Club). Selected Television/Film Credits: *Schmigadoon* (AppleTV+ Season's 1 & 2), *FBI* (CBS), *Billions* (Showtime), *Power* (Starz), *The Other Two* (Comedy Central), *Psych* (USA), *In The Heights* (Warner Bros.), and *Christmas Waltz* (Hallmark). Thank you: Tyler, Jaelen, Cocoa, JimmyD., Gmo, DGRW crew, Maritza, Melissa. @juliaharnett

MICHAEL JAMES (*Elf, Ensemble; he/him*). CTG debut! Regional: Musical Theater West (*The Wizard of Oz*), Goodspeed Opera House (*Bye Bye Birdie*), Pittsburgh CLO (*Altar Boyz, Newsies, Mamma Mia!*), Maltz Jupiter Theater (*West Side Story, How to Succeed... , Chicago*), Sacramento Music Circus (*Mamma Mia!*), and McCoy Rigby Entertainment (*Newsies, Mamma Mia!*). Up next: *Mystic Pizza*. Television: *The Marvelous Mrs. Maisel*. @heyitsmichaeljamesbrown

GRETA REBECCA KLEINMAN (*Nancy, Ensemble; she/her*). Greta Rebecca is thrilled to make her debut at the Ahmanson Theatre in *A Christmas Story*. Credits: *Matilda* (Matilda), *A Christmas Carol* (Tiny Tim). Heartfelt thank you to Franck Casting, ACS Team, Stewart Talent, Lisa Calli, Thommie Retter, Wright Way, and Alex Renee'- Davies. Love to my family and friends. My Daddy in heaven, I did it! Psalm 149:3.

KAYDEN ALEXANDER KOSHELEV (*Schwartz, Ensemble; he/him*). Kayden is thrilled to be making his debut with CTG and the Ahmanson Theatre! Kayden has an array of TV, film, voiceover, commercial, and musical theatre credits. Most recently, he starred as Oliver in *Oliver!* with 5-Star Theatricals, sung "Hallelujah" in Kevin Hart's *Me Time* on Netflix, and is part of Zack Snyder's film *Rebel Moon*, premiering in December. Kayden thanks his amazing family and team for the unconditional love and support that allows him to live out his dreams. IG: @kaydenkoshelev_official

TRENT MILLS (*Ensemble, U/S Jean Shepherd, U/S Old Man, U/S Santa Claus; he/him*). Trent is beaming with gratitude to be making his CTG debut! International Tour: *Ash in Evil Dead the Musical*. TV: *Little America* (Apple TV), *Tower of God* (HBO). Favorite Regional Credits: *Shrek* (Shrek), *Young Frankenstein* (The Monster), *Music Man* (Marcellus), *Cruel Intentions the Musical* (Greg). Follow along: @Gianttrent

KYLE MONTGOMERY (*Santa Claus, Ensemble; he/they*). International Tour: *Rudolph, the Red-Nosed Reindeer* (Hermey). National Tour: *The Pout-Pout Fish* (PSM). Regional: DeafWest (PSM), Actors Co-Op (Producer), Uptown Players, Lyric Stage, WaterTower Theatre, Circle Theatre, Theatre Three, StageWest. MT Adjunct @ Fullerton College. BFA/TCU. MFA/SDSU. AEA. For private vocal/acting coaching - @frostactor (IG). raisin & boo <3

GABRIEL NAVARRO (*Ensemble, he/him*). Grateful for his Ahmanson debut! Selected credits: MTW's *R&H's Cinderella* (Prince Topher), SDMT's *42nd Street* (Billy Lawlor), MTG's *Follies* (Young Buddy), *Brigadoon* (Charlie Dalrymple), The Getty Villa, The 5th Avenue Theatre, Tuacahn, and MRE-La Mirada. Currently attending USC's School of Dramatic Arts (BFA in Musical Theatre) Fight On! @gabrielnavarrojr gabrielnavarrojr.com

EMILIE ONG (*Waitress, Ensemble; she/her*) is thrilled to be part of *A Christmas Story*. Credits include *The Sound of Music* and *Joseph and the Amazing Technicolor Dreamcoat* (McCoy Rigby Entertainment). Shoutouts to Christin, Megan, VoH, BAS, BAA, and BFF Aldo. Thank you Five Star Talent Management, DDO Artists Agency, family, and God! Her theatre-loving grandma is watching from Heaven! @emilie.syong

JANE PAPAGEORGE (*Swing, U/S Miss Shields; she/her*). Recently: Val - *A Chorus Line*, Sarah Palin - *44: The Obama Musical*. Past credits: Hollywood Bowl's *HAIR* and *A Chorus Line*; Jamie Leigh Lee - *Scary Musical the Musical!*; Princess Anna - *Frozen: Live at the Hyperion*; Anytime Annie - *42nd Street*; April - *Company*; *Cabaret*; *Spamalot*; *General Hospital*; *Butterflies of Love*. KMR Talent @ janepapageorge

ERIC PETERSEN (*The Old Man, he/him*). Eric Petersen has worked extensively on television and the Broadway stage. TV: *Kevin Can F*** Himself* (Kevin), *High Desert*, *Kirstie*, *Madagascar: A Little Wild* (Emmy nomination for his role as Ant'ney), Guest Stars: *The Big Bang Theory*, *Modern Family*, *Chicago Fire*, and many more. Film: Oscar Nominated Coen Bros. *Ballad of Buster Scruggs*. Broadway: *Shrek The Musical*, *School of Rock*, *Escape to Margaritaville*, and *Peter and the Starcatcher*. Co-host of the #1 Christmas podcast *Christmas Countdown Show*. Love to Lisa, Sophie, and Miles. Graduate of Bradley University. @ericpete Insta @theportlygentleman Fashion Insta.

JACOB PHAM (*Ensemble, Swing, U/S Flick, U/S Randy, U/S Grover Dill, U/S Waiter; he/him*) is a vibrant young actor, singer, dancer, and pianist. Theatre: *All My Sons* (Bert) Tampa Repertory Theatre; *The Lion King, Jr.* (Young Simba) Ovations Theatre. TV: *Sesame Street*. Voiceover: Disney Jr. and Nick Jr. Special thanks to Lisa Calli, DDO artists agency, Orlando Pena, Emilia Sargent, and his family for believing in him. @JacobPhamOfficial

IZZY PIKE (*Mary Beth, Ensemble; she/her*) is thrilled to be a part of *A Christmas Story!* Special thanks to my family for their endless support and encouragement! Credits: *ANNIE NATIONAL TOUR*. Thank you to Ivy Artists Management, DDO Artists Agency, Valerie Gould, and John and Bonnie Ryerson. "Never give up on your dreams!" @theizzybizz

SHELLEY REGNER (*Miss Shields, Ensemble; she/her*). CTG's Ahmanson Theatre debut! Film/TV: *Pitch Perfect* franchise (Universal), *Underdeveloped* (Tubi). Nat'l Tour: Disney *DCappella* (debut album). Regional Credits: *Bronies!* (world premiere), *Company* (5 Star Theatricals), *Cruel Intentions Musical*, *Tick, Tick... Boom!* (After Hours Theatre Co.), *Beauty and the Beast in Concert* (Hollywood Bowl). @shelleyregner

SABRINA SLOAN (*Mother, she/her*). Most recently starred in *King Liz* at the Geffen following a four-year run as Angelica Schuyler in *Hamilton* (opposite Lin Manuel Miranda). OBC: *Hairspray*, *Catch Me If You Can*, *Motown the Musical*, 1st National Tour: *In the Heights*. TV/Film: *Hacks*, *All Rise*, *Ode to Joy*, *Blindspot*, *Mysteries of Laura*, *Boston Legal*. Graduate of Northwestern University. Merry Merry and Love to Q+J.

CHARLIE STOVER (*U/S Ralphie, Ensemble, U/S Others; he/him*). Charlie recently completed a 6-month run as Charlie

Bucket in *Charlie and the Chocolate Factory* at Tuacahn. Offstage, he has recurred on *Yellowstone*, and recently made his Cannes Film Festival debut in *Riddle of Fire*. Charlie would like to thank CTG, his parents, family, and friends for their endless support. @charlieslover

HENRY WITCHER (*Randy*) is excited to make his Ahmanson debut! TV Credits: *Lone Star: 9-1-1*, *Kindred*, and Hulu's *The New Nanny*. Voiceover: Netflix's *Gabby's Dollhouse*, Disney's *Firebuds*, and *Robogobo*. Henry is a session singer and member of the Los Angeles Children's Chorus. Thanks to my family, Baraka May, DDOkids, DPN, and Sherry Kayne!

JILL GOLD (*Production Stage Manager, she/her*) began her career at the Taper in 1983 and is happy to be back at CTG 40 years later! In between, she stage managed over 250 productions, including 6 national tours. Jill teaches at Occidental, UCLA, and USC, using her book *Stage Management* by Lawrence Stern and Jill Gold.

MICHELLE BLAIR (*Stage Manager, she/her*) has enjoyed a long history of stage managing in Los Angeles and has worked extensively with Center Theatre Group on over forty productions at their three theatres. Other favorites include *A Christmas Carol* First National Tour, *The Pee-wee Herman Show* at Club Nokia, *A Long Bridge Over Deep Waters* with Cornerstone Theater Company, *Henry IV* with Shakespeare Center Los Angeles, *Jersey Boys* in Las Vegas, and *Eurydice* and *La Traviata* with the Los Angeles Opera. Graduate of the University of Southern California and the University of Amsterdam. Mom to fifteen-year-old Liam and eleven-year-old Imogen. For Susie Walsh.

EDWARD KHRIS FERNANDEZ (*Stage Manager, he/him*). Regional: *The Engagement Party* at The Geffen Playhouse; *On This Side of the World*, *Interstate*, *Vietgone* at East West Players; *Clyde's* at The Mark Taper Forum; *Clyde's* at The Goodman Theatre; *In The Heights*, *Songs From The Border* at The Colorado Fine Arts Center; *The Garden* at La Jolla Playhouse.

JOSEPH ROBINETTE (*Book*) is a 2013 Tony Award nominee and Drama Desk Award nominee and the award-winning author of fifty-five published plays and musicals. His works have been produced in all fifty states and in seventeen foreign countries. Twelve of his plays have been translated into foreign languages. His plays have been produced by Lincoln Center, Pittsburgh Playhouse, Barter Theatre, Laguna Playhouse, Goodman Theatre and the BBC, among others. Robinette collaborated with E.B.White on the authorized stage version of *Charlotte's Web*, and he wrote the musical version with composer Charles Strouse.

BENJ PASEK AND JUSTIN PAUL (*Lyrics/Music/Arrangements*) are the Tony, Oscar, and Golden Globe-winning songwriting team behind the Broadway musicals *Dear Evan Hansen* (Tony, Drama Desk Award, Obie Award, Outer Critics Circle Award, Helen Hayes Award) and *A Christmas Story, The Musical* (Tony, Drama Desk, Outer Critics Circle Award nominations). Other musicals include *Dogfight*, (Lucille Lortel Award winner, Drama League, Outer Critics Circle, London Evening Standard Awards nominations), *James and The Giant Peach*, and *Edges*. Film projects include: *La La Land* (Lionsgate); *Trolls* (Dreamworks Animation). Upcoming film projects include *The Greatest Showman* (FOX); *Snow White* (Walt Disney Pictures); *Medusa* (Sony Pictures Animation); *Aladdin* (Walt Disney Pictures). TV credits include *Smash*, *Sesame Street*, *The Flash* and *Johnny and the Sprites*, and Fox's upcoming *A Christmas Story Live!*. Additional honors: Richard Rodgers Award for Musical Theatre (American Academy of Arts and Letters); ASCAP Richard Rodgers New Horizons Award; Jonathan Larson Award. Both are graduates of the University of Michigan Musical Theatre program and members of the Dramatists Guild of America, Inc.

JEAN SHEPHERD (*Originating Author*). One of the most nostalgic, humorous storytellers of his day, Shepherd wrote for several magazines and his articles were published in a series of books including *The America of George Ade*, *In God We Trust: All Others Pay Cash*, *A Fistful of Fig Newtons* and *The Ferrari in the Bedroom*. Shepherd's radio broadcasting career began in Cincinnati in 1948. He eventually moved to WOR Radio in New York. He performed entirely without scripts. From 1971 to 1994, Shepherd became a screenwriter, writing and producing numerous television and cinema works. In 2005, Shepherd was posthumously inducted into the National Radio Hall of Fame and the Broadcast Cable Hall of Fame.

JOHN RANDO (*Original Broadway Direction*). Broadway credits include the currently highly acclaimed revival of *On The Town*, *A Christmas Story*, *The Wedding Singer*, *Urinetown* (Tony and Outer Critics Circle Award for Best Director), *A Thousand Clowns* and Neil Simon's *The Dinner Party*. His recent Off-Broadway credits include this season's *Lives of the Saints* (Primary Stages), *The Heir Apparent* (2014 SDCF Calloway Award for Direction - Classic Stage Company), *All in the Timing* (Primary Stages - 2013 Obie Award for Direction), and *The Toxic Avenger*, among many others. He directed the Encores! Productions of *Little Me*, *It's a Bird... It's a Plane... It's Superman*, *Gentlemen Prefer Blondes*, *On the Town*, *Damn Yankee*, *Face the Music*, *Strike Up the Band*, *Do Re Mi*, *The Pajama Game* and *Of Thee I Sing*. He also directed the staged performance of Rodgers and Hammerstein's *Carousel* at the New York Philharmonic.

MATT LENZ (*Director*). Broadway: *Hairspray*, *Charlie and the Chocolate Factory*, *Catch Me If You Can*, *The Velocity of Autumn* (Associate Director on original productions), Disney's *Beauty and the Beast* (Resident Director). Off-Broadway: *Pageant: The Musical* (Drama Desk nom.), *The Irish Curse*, *Idaho! The Comedy Musical*, *The Great Daisy Theory*, *Fingers and Toes*, and *Alan Ball's Tense Guy*. National Tours: *Charlie...and the Chocolate Factory*, *The Sound of Music*, *A Christmas Story: The Musical*, *Cheers: Live on Stage*, *Catch Me If You Can*, *The Who's Tommy*, and numerous *Hairspray* companies. International: *The Sound of Music* Global Tour (current), *Charlie...* in Australia and productions of *Hairspray* in Australia, South Africa, the U.K., Toronto, and Germany. Regional: Numerous plays and musicals at the Ahmanson, Paper Mill Playhouse, George Street Playhouse, the MUNY, Ogunquit Playhouse, La Mirada, Cape Playhouse, North Carolina Theatre, Maltz Jupiter Theater, Forestburgh Playhouse, Zach Theatre, Gulfshore Playhouse, Casa Manana. Matt is the Founding Artistic Director of the annual In The Works ~ In The Woods Festival of new plays and musicals. mattlenzdirector.com @magicmattlenz

WARREN CARLYLE (*Choreographer, he/him*) is an Emmy Nominated, Tony Award winning Director/Choreographer. Most recently choreographed the Tony Award nominated revival of *The Music Man* on Broadway. Warren has been nominated for two Tony Awards, seven Drama Desk Awards, and an Emmy award. He's won a Tony Award (*After Midnight*), two Outer Critics Circle Awards, a Drama Desk Award and the prestigious Astaire Award for choreography. Current Productions: *Barry Manilow's Harmony* (Broadway).

BROOKE MARTINO (*Associate Choreographer, she/her*). Choreography Credits: *A Christmas Story* (National Tour), *Happy Days the Musical* (Broadway World Award: Best Choreography), *Marvelous Wonderettes*, *Grease*, and *Baritone*. Performer Credits: *A Christmas Story*, *Jersey Boys*, *Priscilla: Queen of the Desert*, *The Great American Trailer Park Musical*, *Catch Me If You Can*, *A Chorus Line*, *Hairspray*, *42nd Street*, and *RENT*. #brookeisgramless Ballchange

MICHAEL RADER (*Associate Director*) is a New York City based director who has served as Artistic Director for Cirque du Soleil, Producing Artistic Director for the historic Cape Playhouse, and Executive Producer for Theatre Aspen. Highlights as a director or associate include the Off-Broadway production of *Stalking The Bogeyman* (Outer Critics Circle Nomination), *Varekai* (Cirque Du Soleil), and productions with Sacramento Music Circus, Theatre Aspen, The Cape Playhouse, The York Theatre Company, The Forestburgh Playhouse, The Human Race Theatre, The Dramatist Guild, The Actors Studio and the critically acclaimed Off-Broadway benefit of William Finn's *Elegies: A Song Cycle*. michaelrader.com

WALT SPANGLER (*Original Broadway Scenic Design*). Walt designed the original Broadway production of *A Christmas Story*, *The Musical*. Recent/upcoming projects include the Broadway premiere of *Escape To Margaritaville*, directed by Christopher Ashley and the Broadway premiere of *Tuck Everlasting*, directed by Casey Nicholaw. Please visit: waltspangler.com.

ELIZABETH HOPE CLANCY (*Original Broadway Costume Design*). Broadway: *A Christmas Story*, *The Musical*; *Passing Strange*; *The Goat, or Who is Sylvia?*; *Bobbi Boland and The Ride Down Mt. Morgan*. International: *The Glass Menagerie* (Shanghai Dramatic Arts), *Death of a Salesman* (Gate Theatre), *A Few Good Men* (Theatre Royal, Haymarket). New York: *The Lady from Dubuque* (Signature Theatre), *Measure for Measure* (Shakespeare in the Park), *The Antigone Project* (Henry Hewes nomination).

HOWELL BINKLEY (*Original Broadway Lighting Design*). Broadway: *Prince of Broadway*, *Come From Away* (2017 Tony nom), *A Bronx Tale*, *Hamilton* (2016 Tony Winner), *After Midnight* (2014 Tony nom), *How to Succeed...* starring Daniel Radcliffe (2011 Tony nom), *West Side Story* (2009 Tony nom), *Gypsy* starring Patti LuPone, *In The Heights* (2008 Tony nom), *Jersey Boys* (2006 Tony Winner), *Avenue Q*, *Parade*, *Kiss Of The Spider Woman* (1993 Tony nom.) Co-Founder and Resident Lighting Designer for Parsons Dance. 1993 Sir Laurence Olivier and Canadian Dora Awards for *Kiss of The Spider Woman*. 2006 Henry Hewes Design Award for *Jersey Boys*. 2016 Henry Hewes Design Award for *Hamilton*.

MICHAEL CARNAHAN (*Scenic Design Adaption*). Off-Broadway—Atlantic Theater Company: *Skeleton Crew*; 59E59: *I and You*; Second Stage: *The Happiest Song Plays Last*; Signature Theatre: *The Piano Lesson*, *The First Breeze of Summer*; *Life Could Be A Dream*, *The Marvelous Wonderettes*, *Three Mo' Tenors*, *Pygmalion*, *Howie the Rookie*, *Brando*. Tours—*Cheers*, *Live On Stage*; *A Christmas Story*, *The Musical*. Regional—credits include Arena Stage, American Conservatory Theater, McCarter Theatre, Williamstown Theatre Festival, Baltimore Center Stage, Pasadena Playhouse, Two River Theatre, Cleveland Play House, Laguna Playhouse, Utah Shakespeare Festival, Northlight Theatre, Signature Theatre, Bucks County Playhouse, Ogunquit Playhouse, Arsht Center, Musical Theatre West, San Jose Repertory, Center Rep. Broadway-Associate scenic designer—*Groundhog Day the Musical*, *Allegiance*, *The River*, *Peter and The Starcatcher*, *ANN: The Ann Richards Play*, *Cyrano de Bergerac*, *The Importance of Being Earnest*, *Bloody Bloody Andrew Jackson*, *All About Me*, *White Christmas*, *Curtains*. michaelcarnahandesign.com.

CHARLIE MORRISON (*Ahmanson Theatre Lighting Designer, he/him*). National/International Tours: Disney's *The Little Mermaid*; *A Christmas Story*, *The Musical*; *Dr. Seuss's How the Grinch Stole Christmas! The Musical* (NYC, Grand Ole Opry, U.S.

Tour); *A Chorus Line* (U.S., Japan, and China); *Chitty Chitty Bang Bang*; *Miss Saigon*; *Aida* (U.S. and Asia); *The Producers*, *Man of La Mancha*; *Guys and Dolls*; *Groovaloo* (N.Y.C., L.A., U.S. Tour); *Hello, Dolly!*; *My Fair Lady*; *The King and I* (U.S. and Korea); *Spelling Bee*; *Gypsy*; *42nd Street* (U.S. and Japan); *Smokey Joe's Café*; *The Who's Tommy* (Europe and Japan); *Titanic*; *The Music Man*; and many others. Regional: Paper Mill Playhouse, Guthrie Theater, Shakespeare Theatre Company (D.C.), Goodspeed Musicals, Seattle Repertory, Seattle 5th Avenue, Broadway Sacramento at Music Circus, Theatre Under the Stars, Dallas Summer Musicals, Kansas City Starlight, Pittsburgh CLO, George Street Playhouse, North Carolina Theatre, PlayMakers Repertory, Tulsa Opera, and many others. Charlie is the recipient of two Helen Hayes Awards for Outstanding Lighting Design. cmlighting.com.

BRIAN HSIEH (*Sound Designer, he/him*). Broadway: (ASD) *OUAOMT*, *JLP*, *FNL*, *SM – TOTD*, (Prog.) *CATCF*, (ASD), *YF*, *PQ*, etc. National Tours: (ASD) *CATCF*, *FNL*, *YF*, *LCAF*. Sound Mixer: *Blast!*, *MM!*. Regional: (SD) *HORH*, *SOM*, etc. One of these days, Brian also hopes to figure out what all the acronyms stand for.

WILLIAM BERLONI (*Animal Director and Trainer*). 2011 Tony Honoree for Excellence in Theatre. William found and adopted the original Sandy for the original production of *Annie*. Since then, all the animals he trains are rescues. Broadway: Twenty six shows which include *The Ferryman*; *The Crucible*; *Bullets Over Broadway*; *Lady Day At The Emerson Bar And Grill*; *Annie* (Original And All Revivals), *A Christmas Story*, *The Musical*; *Legally Blonde*; *Chitty Chitty Bang Bang*; *Camelot*; *Alice In Wonderland*; *Oliver!*; *Anything Goes*; *The Wiz*; and *The Wizard Of Oz*. Mr. Berloni is the Animal Director of the musical *Because Of Winn Dixie* with music by Duncan Sheik and book and lyrics by Nell Benjamin. He has trained animals for hundreds of Off-Broadway, regional theatre, tours, television and movies. He provided the dogs to play "Nana" in *Peter Pan Live*, "Toto" in *The Wiz Live* and "Sandy" in *Annie Live*. Other television includes *Power*, *Billions*, *Sesame Street*, *High Maintenance*, *The Village*, *Modern Love*, *Little Voice*, *Almost Family*, *Betty*, *Ramy*, *Mr Robot*, *Russian Doll*, *Raising Kanan*, *Ghost*, *The Marvelous Mrs. Maisel*, *Girls5eva*, *Sand Dollar Cove*, *Noel Diary*, *Life And Beth*, *Inside Amy Schumer*, *Fleishman Is In Trouble*, *Harlem*, *Three Women*, *Harlem*, and *Just Like That*, *Kaleidoscope*, and *Fleischman Is In Trouble*. Mr. Berloni and his family are the subjects of Discovery the docu-series entitled *Wags To Riches With Bill Berloni*. Published author of *Broadway Tails*. Mr. Berloni is also the Director of Animal Behavior and Training at the Humane Society of New York. Follow us on Facebook and Instagram. theatricalanimals.com .

ALISON FRANCK, C.S.A. (*Casting, she/her*) has been a casting director in NYC for over 25 years. This is her 8th cast of *A Christmas Story*, *The Musical*. She started as an assistant for many Broadway Productions, then she worked

in film/TV for several years, then from 2000- 2010, she was the Resident Casting Director at Paper Mill Playhouse. In 2011, she joined the team at Liz Lewis Casting Partners, where she cast commercials, voiceovers, film/TV, and theatre. Alison now runs her own company, Franck Casting, where she has cast several tours of well-known musicals including *Legally Blonde*, *Dreamgirls*, *An American in Paris*, *A Chorus Line*, *The Simon and Garfunkel Story Live* and the upcoming *The Cher Show* and *Little Women, the Musical*. franckcasting.com

ANDREW SMITHSON (*Musical Supervisor, Music Director, he/him*). Tours: *A Christmas Story*, *The Musical*; *Joseph... Dreamcoat* (starring Diana DeGarmo and Ace Young); *Gypsy*; *Aida*; *Legally Blonde*; *Jesus Christ Superstar*. Off-Broadway: *The Wonderful Wizard of Song*, *Flanagan's Wake*. Music Director and Orchestrator for *A Christmas Carol* (Trinity Rep), *POPart: the musical* (NYMF Festival), and *Hard Times* (First Irish Theatre Festival). Previous adjunct instructor at the University of Cincinnati-College Conservatory of Music, vocal coach at PACE University in New York City, and Vocal Director at Celebrity Cruises Entertainment.

JAMES BOOK (*Technical Supervisor*) is a multi-faceted theatre technician hailing from Fullerton, CA. James most recently served as the Head Carpenter on the National Tour of *Legally Blonde* with Big League Productions. Favorite credits include Electrician and Assistant TD on the Japan tour of *A Chorus Line*, and the Head Props on the 2021 National Tour of *A Christmas Story*, *The Musical!* All my love to Sophie and Hazel.

BIG LEAGUE PRODUCTIONS/DANIEL SHER (*Executive Producer and General Management*) is celebrating its 30th season of producing and general managing Broadway tours of shows and attractions throughout the world. Early highlights were collaborations with Disney on Elton John and Tim Rice's *Aida* (North America, Taiwan, and China) and with Cameron Mackintosh on a new production of *Miss Saigon*. Also, the Tony®-Award winning Broadway revival of *42nd Street* and Susan Stroman's Broadway production of Meredith Willson's *The Music Man*. Others: *Footloose* (Las Vegas, U.S.A), *Titanic*, *1776*, *Peter Pan*, *A Funny Thing Happened on the Way to the Forum* starring Rip Taylor, *Blast!*, *The Who's Tommy* (North America, South America, Europe, and Japan), *Ain't Misbehavin'* with Ruben Studdard, and the First National Tour of *Chitty Chitty Bang Bang*— flying car and all. More recent: *The Producers* (Susan Stroman's original work); *Hello, Dolly!* with Sally Struthers; *Guys and Dolls*; *My Fair Lady* (U.S. Tour and China premiere); original hip-hop dance show *Groovaloo* (Off-Broadway); *Dr. Seuss' How the Grinch Stole Christmas! The Musical* (10 USA tours, Grand Ole Opry, and Madison Square Garden); *Dreamgirls* (U.S., China premiere, Japan); *Hair* (U.S. and Japan); *Bring it On: The Musical* (U.S. and Japan); and *Legally Blonde* (US, China premiere, Singapore).

More recently, *A Chorus Line* toured the U.S.A, Japan and was seen in China for the first time. Post-pandemic, Big League remounted its acclaimed tour of *An American in Paris*, a new production of *South Pacific*, *Legally Blonde*, and continued touring its flagship production of *A Christmas Story*, *The Musical*. Current and future work includes *The Cher Show* (First National Tour); *Little Women*; *A Christmas Story*, *The Musical* at the Ahmanson Theatre; and *The Addams Family*.

BENJAMIN “BOB” CLARK (*Motion Picture Director/Co-Screenwriter*) was an actor, director, screenwriter and producer. Mr. Clark directed a diverse collection of both blockbuster and cult hits including *Black Christmas*, *Murder by Degree*, *Tribute* and *Porky's*. Working from Jean Shepherd's book, *In God We Trust, All Others Pay Cash*, Mr. Clark directed, and co-wrote with Shepherd and Leigh Brown, the motion picture *A Christmas Story*. Films that followed included *Rhinestone*, *Turk 182!*, *From the Hip*, *Loose Cannons*, and *Baby Geniuses*.

WENDY J. CONNOR/DONNA FIEGEL (*Press and Marketing*). TRUE Marketing is a full-service entertainment marketing firm based in Orlando, Florida that boasts a full Marketing and Public Relations Consulting Team, Graphic Design Department, Social Marketing Strategy Team and In-House Video Production Team. Team TRUE has worked on national tours of *A Christmas Story*, *The Musical*; *An American In Paris*; *Legally Blonde*; *A Chorus Line*; *My Fair Lady*; *Spring Awakening*; *The Producers*; *42nd Street*; *Dreamgirls*; *Guys and Dolls*; and *The Wizard of Oz*. TeamTRUE.com

CENTER THEATRE GROUP

SNEHAL DESAI (*Artistic Director, he/him*) was appointed Center Theatre Group's third artistic director in 2023. As an artistic leader, Snehal has sought to raise awareness on social issues that affect Angelenos through impactful and empowering storytelling. Previously, he was the Producing Artistic Director of East West Players. A Soros Fellow and the recipient of a Tanne Award, Snehal was the Inaugural Recipient of the Drama League's Classical Directing Fellowship. He has served on the boards of the Consortium of Asian American Theaters and Artists (Caata), Theatre Communications Group (TCG), and currently serves on the board of the National Alliance for Musical Theatre (NAMT). Snehal was on the faculty of USC's graduate program in Arts Leadership and is a graduate of the Yale School of Drama.

MEGHAN PRESSMAN (*Managing Director/CEO, she/her*) joined Center Theatre Group in 2019. Previously, she served as Managing Director of Woolly Mammoth Theatre Company (D.C.), Director of Development for Signature Theatre (N.Y.), and Associate Managing Director of Berkeley Rep. She is a

graduate of Yale School of Drama/Yale School of Management and serves as a mentor in the Theater Management program. Meghan has served as the Vice-Chair for the Theatre Communications Group Board of Directors and is a member of the Broadway League.

DOUGLAS C. BAKER (*Producing Director, he/him*) joined Center Theatre Group in 1990. Doug is an active member of the Broadway League, the Independent Presenters Network (IPN), and is a proud member of the Association of Theatrical Press Agents and Managers (ATPAM). In 2013, Doug received the Broadway League's prestigious Outstanding Achievement in Presenter Management Award.

GORDON DAVIDSON (*Founding Artistic Director*) led the Taper throughout its first 38 seasons, guiding over 300 productions to its stage and winning countless awards for himself and the theatre—including the Tony Award for theatrical excellence, Margo Jones Award, The Governor's Award for the Arts, and a Guggenheim fellowship. *The Kentucky Cycle* and *Angels in America (Part One)* won the Pulitzer in consecutive years and, in 1994, three of the four plays nominated for the Tony Award for Best Play were from the Taper (*Angels in America* won). In 1989, Gordon took over the Ahmanson and, in 2004, he produced the inaugural season in the Kirk Douglas Theatre.

CENTER THEATRE GROUP, one of the nation's preeminent arts and cultural organizations, is Los Angeles' leading not-for-profit theatre company, which, under the leadership of Artistic Director Snehal Desai, Managing Director / CEO Meghan Pressman, and Producing Director Douglas C. Baker, programs seasons at the 736-seat Mark Taper Forum and 1,600 to 2,100-seat Ahmanson Theatre at The Music Center in Downtown Los Angeles, and the 317-seat Kirk Douglas Theatre in Culver City. In addition to presenting and producing the broadest range of theatrical entertainment in the country, Center Theatre Group is one of the country's leading producers of ambitious new works through commissions and world premiere productions and a leader in interactive community engagement and education programs that reach across generations, demographics, and circumstances to serve Los Angeles. Founded in 1967, Center Theatre Group was led by Founding Artistic Director Gordon Davidson until 2005 when Michael Ritchie became artistic director until his retirement in 2021; Snehal Desai was appointed the organization's next artistic director in 2023. Center Theatre Group has produced more than 700 productions across its three stages, including such iconic shows as *Zoot Suit*; *Angels in America*; *The Kentucky Cycle*; *Biloxi Blues*; *Twilight: Los Angeles, 1992*; *Children of a Lesser God*; *Curtains*; *The Drowsy Chaperone*; *9 to 5: The Musical*; and *Bengal Tiger at the Baghdad Zoo*. CenterTheatreGroup.org

BIG LEAGUE PRODUCTIONS, INC.

President.....Daniel Sher
 General Manager.....Zach Krohn
 Associate General Manager.....Sophie Whitfield
 Supervising Company Manager.....Brent Watkins
 Office Manager and
 General Management Assistant.....Carson Lambert
 Management Consultant.....Shawn Thibault
 Accounting.....Neuschatz, Neuschatz, Herman & Hanke, LLP
 Insurance.....Edgewood Partners Insurance Center
 Banking.....JPMorgan Chase
 Payroll.....Checks & Balances Payroll, Inc
 Christmas Story National Tour Booking.....L. Glenn Poppleton

TRUE MARKETING

Wendy Connor
 Donna Fiegel

Company Manager.....Quinn Felisa O'Connor

Orchestrations Adapted by.....Dan Redfeld
 Associate Lighting Designer.....Gary C. Echelmeyer
 Associate Sound Designer.....John Nobori
 Wardrobe Coordinator.....Donna MacNaughton
 Assistant Wardrobe Coordinator.....Katie Sciacqua
 Production Carpenter.....Rodney Mann
 Assistant Carpenter.....David Thoms
 Assistant Production Carpenter/Automation Operator.....Jim Book
 Head Electrician.....James Book
 Head Props.....Hailey Gold
 Head Audio.....Timothy Riggs
 Hair/Wig Supervisor.....Victoria Tinsman
 Production Assistant.....Jessica Keasberry-Vnuk
 Studio Teachers.....Randy Hoffman, Laurel Geare, Daryl Chou
 Animal Handler.....John "Grim" Grimsley
 Keyboard Programmer.....Gary Georgett
 Production Consultant.....Kevin Brannick
 Stitchers.....Hannah Reinartz, Kendall Veronick,
 Shaunte Williams, Gio Dilbeck, Saundra Brungard
 Physical Therapy.....FusionArts/Karen Moran P.T.

CREDITS

Lighting Provided by Felix Lighting
 Sound Provided by DnB Design
 Trucking by Nation Wide Logistics
 Star Drops constructed by Main Light Industries, Inc.
 House Automation by MacGuire Scenic
 Some drops painted by Colbalt Studios, Inc.
 Car constructed by Hamilton Scenery

SPECIAL THANKS

Tom McCoy and Jerry Goehring



The Actors and Stage Managers employed in this production are members of Actors' Equity Association, the Union of Professional Actors and Stage Managers of the United States. This theatre operates under an agreement between the League of Resident Theatres and Actors' Equity Association, the Union of Professional Actors and Stage Managers in the United States.



The following employees are represented by the International Alliance of Theatrical Stage Employees, Moving Picture Machine Operators, Artists and Allied Crafts of the United States, its Territories and Canada, AFL-CIO, CLC: Stage Crew Local 33; Treasurers and Ticket Sellers Local 857; Wardrobe Crew Local 768; Make-up Artists and Hair Stylists Local 706.



The House Managers and Press Agents employed in this production are represented by the Association of Theatrical Press Agents & Managers.



The Musicians employed in this production are members of the American Federation of Musicians of the United States.



The Director and Choreographer are members of the Society of Stage Directors and Choreographers, Inc., an independent national labor union.



United Scenic Artists represents designers and scenic artists for the American Theatre.

Center Theatre Group is a member of the League of Resident Theatres (LORT), the American Arts Alliance, the Broadway League, Independent Producers' Network (IPN), and the Theatre Communications Group (TCG).

SNEHAL DESAI Artistic Director | **MEGHAN PRESSMAN** Managing Director/CEO

DOUGLAS C. BAKER* Producing Director | **GORDON DAVIDSON** Founding Artistic Director

Center Theatre Group would like to thank its exceptional staff for their ongoing commitment, dedication, and extraordinary efforts.

ARTISTIC

LINDSAY ALLBAUGH* Associate Artistic Director
 TIFFANY SLAGLE Artistic & Literary Administrative Assistant
 CASEY NICHOLAW, PHYLICIA RASHAD,
 PAULA VOGEL Associate Artists

EXECUTIVE

CAMILLE SCHENKAN* Deputy Managing Director
 KHANISHA FOSTER Director of Equity,
 Belonging & Engagement
 A'RAELLE FLYNN-BOLDEN Staff Programs Manager
 ADRIENNE KNIGHT Assistant to the Artistic Director
 and Managing Director/CEO

MANAGEMENT

NAUSICA STERGIOU* General Manager
 ERIC SIMS* Ahmanson Theatre Presentations Manager
 KATIE SOFF* Associate General Manager
 JEFFREY UPAR* General Management Associate
 KIARA BRYANT Company Manager

EDUCATION AND COMMUNITY PARTNERSHIPS

TRACI KWON* Arts Education Initiatives Director
 JESUS REYES* Community Partnerships Director
 NICO ROSARIO Creative Workforce Initiatives Director
 AURORA LOG Program Manager
 COURTNEY CLARK Digital Learning Manager
 MEIGHAN LA ROCCA Education & Community
 Partnerships Coordinator
 ESTELA GARCIA, CHRISTINE BREIHAN Resident Teaching Artists

ZACHARY BROWN, RAMY EL-ETREBY,
 AJA HOUSTON, JOHNATHON L. JACKSON,
 DAVID JIMENEZ, NIKKI DILORETO,
 CARENE ROSE MEKERTICHYAN, MARA PALMA,
 ROBERT PATERNO, TARA RICASA,
 TIANA RANDALL-QUANT, NEGIN SINGH,
 MONIQUE SYPKENS Teaching Artists

PRODUCTION

JOE HAMLIN* Director of Production
 SHANNON G. BICKNELL Production Manager
 KATIE CHEN Associate Production Manager
 BEONICA BULLARD Assistant Production Manager
 CAMBRIA CHICHI Production Coordinator

SHAWN ANDERSON* Head Carpenter (Ahmanson Theatre)
 SCOTT LUCAS Head Properties (Ahmanson Theatre)
 JARED BATTY Head Electrician (Ahmanson Theatre)
 ROBERT SMITH* Head Sound (Ahmanson Theatre)
 SHANE ANDERSON Head Flyrail (Ahmanson Theatre)
 MICHAEL GARDNER* Wardrobe Supervisor (Ahmanson Theatre)
 MARY BORGIA Hair & Make-up Supervisor (Ahmanson Theatre)
 CHRISTINE L. COX* House Manager (Ahmanson Theatre)
 EMMET KAISER* Head Carpenter (Mark Taper Forum)
 MARY ROMERO Head Properties (Mark Taper Forum)
 AARON STAUBACH* Head Electrician (Mark Taper Forum)
 CHRISTIAN LEE Head Sound (Mark Taper Forum)
 LORETTA BUSSEN Wardrobe Supervisor (Mark Taper Forum)
 ZANE WAYNERIGHT Stage Supervisor (Kirk Douglas Theatre)
 CESAR VARGAS Head Electrician (Kirk Douglas Theatre)
 MATTHEW COLLERAN Head Audio and Video (Kirk Douglas Theatre)
 CHLOE JOY Assistant Technical Director

MERRIANNE NEDREBERG* Shop Director
 KATE REINLIB Associate Prop Director
 ERIC BABB Assistant Prop Director
 RAUL VEGA MARTINEZ Shop Supervisor
 SHANTA FARIA DE SA Costume Shop Manager
 CAYLYN DABNEY Resident Assistant Costume Designer
 ASPHORD JACOWAY Resident Assistant Costume Designer

OPERATIONS

PETER WYLIE Operations & Facilities Director
 CHASE ANDERSON-SHAW Kirk Douglas Theatre Manager
 CHRISTIAN TAYLOR Facilities Manager
 NIKI ARMATO Facilities Associate
 JULIO A. CUELLAR* Facilities Assistant
 VANESSA DE LOERA Facilities Coordinator
 JASMINE BRAFF Operations Manager
 CURT GAVIN Operations Assistant
 NATALIE MARCEAU, D'ANGELO ANDERSON,
 SIMON J.O. MARTIN, REGINA NILES Drivers
 VANESSA BRADCHULIS, OLIVIA CHOATE,
 PRESSLY COKER, MONICA GREENE,
 PAT LOEB, TWON POPE, SAM UDERO Stage Door Attendants

FINANCE, INFORMATION TECHNOLOGY, AND HUMAN RESOURCES

CHERYL SHEPHERD Chief Financial Officer
 SARAH STURDIVANT Director of Finance & Technology
 DENICE BEHDAD Assistant Controller
 ANAHTI ASHRAFIPOUR Senior Accountant
 XOXCHITL ORTEGA Accounts Payable Supervisor
 KERRY LARICK Accounting Assistant
 JESSICA HERMANDEZ Payroll Manager
 JUAN MARTINEZ Payroll Specialist

TOM MEGALE Director of Business Applications
 JANELLE CABRERA TORRES Tessitura &
 Web Administration Director
 JOEY SOLANO Digital Product Manager
 CHIMA OMEAKU Help Desk Support
 CRIS SPACCA* Tessitura & IT Support

JODY HORWITZ* Director of Human Resources
 CRISTINA TORRES Human Resources Generalist
 MOSS ADAMS Auditor
 MICHAEL C. DONALDSON, LISA A. CALLIF Legal Counsel
 GIBSON, DUNN & CRUTCHER Legal Counsel

INSTITUTIONAL ADVANCEMENT

SARAH SULLIVAN Director of Institutional Advancement
 SEVAG ABAJIAN Director of Advancement Operations
 RICKY CARTER Director of Development
 CRYSTAL DIAZ Director of Events
 PAMELA KUHR Director of Annual Giving
 PAULA MATALLANA Associate Director of Institutional Grants
 ELIZABETH DELLORUSSO Major Gifts Officer
 OYE EHIKHAMHEN Individual Giving Officer
 ZAIN PATEL Individual Giving Officer
 NICOLE SCIPIONE* Individual Giving Officer
 KATELIN URGO Individual Giving Officer
 CHRISTOPHER ECKHART Donor Communications Manager

WENDY HUI Grants Manager
 MIKE RATTERMAN Telefundraising Manager
 BK DAWSON Senior Analyst, Gift & Accounting Reporting
 HAILEY BRUNSON Annual Giving Coordinator
 ALICE PELAYO Donor Liason & Institutional
 Advancement Assistant
 IRENE CHO Executive Assistant
 AL BERMAN*, BRAD GRIFFITH, VARTAN MERJANIAN,
 BENUAMIN SCHWARTZ, PAUL VITAGLIANO Donor Advisors

MARKETING AND GRAPHICS

GARRETT COLLINS Deputy Director of Marketing
 CANDICE WALTERS* Associate Director, Marketing Operations
 DEVANY HARDEN Manager, CRM & Email Marketing
 KATHARINE MEANS Advertising Manager
 ALEXA EDWARDS Marketing Fellow
 CAROLINE THOMPSON/IMPACT 123 Media Planning
 DEANNA MCCLURE Art & Design Director
 JAVIER VAQUEZ Digital Content Producer
 LILA WAKILI Senior Graphic Designer
 CINDY ANDRADE Production Artist

COMMUNICATIONS

BRETT WEBSTER Communications Director
 JESSICA DORHERTY Associate Editorial Director
 BOBBY MARTINEZ Communications Coordinator
 DAVIDSON & CHOY PUBLICITY
 TIM CHOY, PETER GOLDMAN,
 VICTORIA WESTBROOK Publicity Consultants

TICKET SALES AND SERVICES

SHAWN ROBERTSON* Ticket Sales Director
 MICHAEL ZOLDESSY* Associate Director, Ticket Sales
 SKYPP CABANAS* Senior Manager, Ticket Operations
 TINTIN NGUYEN Ticketing Operations Coordinator
 SANDY CZUBIAK* Audience & Subscriber Services Director
 JENNIFER BAKER*,
 CHERYL HAWKER* Audience Services Senior Supervisors
 JONATHAN FLORES Audience Services Assistant Supervisor
 CHRISTIAN UNGER Audience Services Sales Associate
 JESSICA ABROMAVICH, JUSTINE PEREZ* Donor Associates
 JOSHUA BADILLO, VICKI BERNDT*,
 CLAY BUNKER, FRANK ENSEBERGER, DANIEL GARCIA,
 IVONNE HERRERA, MICHAEL MUNOZ,
 FELIPE ROQUE, SAMUEL ROQUE, JURGEN SANTOS,
 CHRISTINA WRIGHT Audience Services Representatives
 DANUTA SIEMAK* Subscriber Services Supervisor
 CHRISTINA GUTIERREZ* Subscriber Services Asst. Supervisor
 LIGIA PISTE*,
 PETER STALOCH* Subscriber Services Senior Representatives
 SARAH K. GONTA* Box Office Treasurer
 KEANA JACKSON, MICHAEL VALLE* 1st Assistant Treasurers
 KAITLYN GALVEZ, MICHAEL KEMPISTY*, RICHARD RUBIO,
 LUIS ESPINOZA 2nd Assistant Treasurers
 SD&A TELESERVICES, INC. Outbound Sales Partner
 JEFFREY LIMONCELLI, KATHLEEN LITTLEFIELD,
 DIANE WARD Subscription Sales Representatives

ARTISTIC DEVELOPMENT & COMMISSIONS

As part of our commitment to supporting new plays and playwrights, we foster and develop a broad range of theatrical work from diverse artists locally, nationally, and abroad.

Artists creating new work commissioned by Center Theatre Group this season:

AZIZA BARNES	YOUNG JEAN LEE	CYNTHIA GRACE ROBINSON
LISA D'AMOUR	MATTHEW LOPEZ	SARAH RUHL
LARISSA FASHORSE	ROGER Q. MASON	T.TARA TURK-HAYNES
JENNIFER HALEY	TAHIRIH MOELLER	LUIS VALDEZ
ALESHEA HARRIS	JANNINE NABERS	PAULA VOGEL
GERALDINE ELIZABETH INDA	QUI NGUYEN	KAREN ZACARIAS
LISA KRON	LYNN NOTTAGE	
KIMBER LEE	MARCO RAMIREZ	

LA. WRITERS' WORKSHOP

Since 2005, we have invited local playwrights to spend a year researching and writing a new work with the feedback of their fellow writers and artistic staff as part of our LA. Writers' Workshop.

Learn more at CTGLA.org/Artists.

2023/24 COHORT:

AMY BERRYMAN	CHRISTOPHER OSCAR PEÑA
INDA CRAIG-GALVÁN	RAMIZ MONSEF
ISAAC GÓMEZ	JASMINE SHARMA

LA. ARTIST RESIDENCIES

DIANA BURBANO
 LARISSA FASHORSE
 MICHAEL FEINSTEIN
 MICHAEL JOHN GARCÉS
 DANIEL ALEXANDER JONES
 MADELINE SAYET
 KRISTINA WONG

CRITICAL MASS PERFORMANCE GROUP
 ENSEMBLE STUDIO THEATRE LA IN PARTNERSHIP
 WITH CHALK REP
 NATIVE VOICES AT THE AUTRY