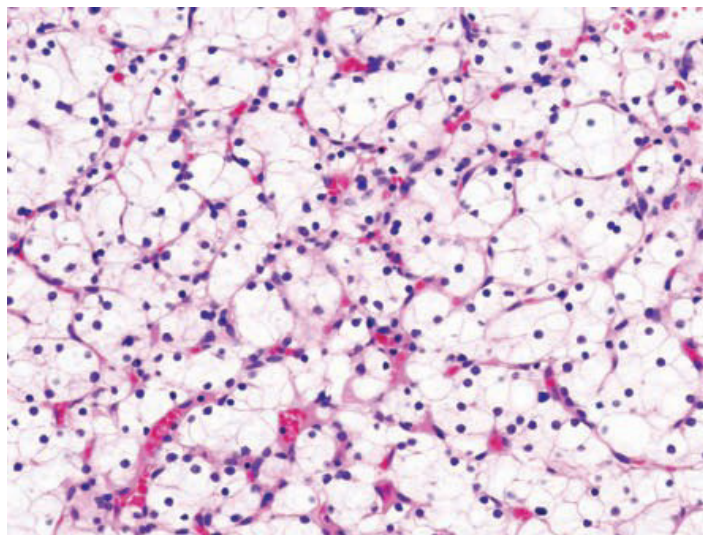


Bioserve™ Global Biorepository

Human Tissue and Blood Bank

Overview

REPROCELL's Bioserve Global Repository is the world's largest commercial human tissue bank, providing researchers with access to over 600,000 DNA, RNA, human tissue and serum samples derived from over 120,000 patients collected from four continents. Bioserve human tissue samples are consistently handled according to validated protocols established by the FDA/NCI guidelines for biomarker research. All samples are fully consented for broad genomic and proteomic use and are ethically collected according to HIPAA regulations and IRB approved protocols.



Renal cell carcinoma

Patient Recruitment

- Patients are recruited under IRB approved protocols and broadly consented for genomic and proteomic research
- Extensive case report forms with specific inclusion exclusion criteria insuring accurate disease state collections
- Ongoing collection of personal physician confirmed normal controls

Sample Handling and Storage

- Tissue is snap frozen to preserve RNA and protein integrity
- Serum kept at -80°C with no freeze/thaw cycles
- Collection sites trained to adhere to strict collection and processing SOPs

Clinical Data Management

- All demographic, clinical and pathological data maintained in a readily searchable database
- Sample data are de-identified and de-linked from the original patient consent
- Client defined sample sets based on specific patient information

Summary

- Over 25 years experience in providing researchers world class biomaterials and data
- Customers for biomaterial include many major pharmaceutical and biotech companies
- Rapid turnaround time on banked and prospective samples
- Custom collection design services
- Samples processed in a CLIA environment



REPROCELL's CLIA certified lab

Bioserve Global Biorepository Blood Based Collections

- | | | |
|-----------------------------|-------------------------|----------------------|
| Asthma | Diabetes | Obesity |
| Cancer (post-treatment) | End-Stage Renal Disease | Osteoarthritis |
| Cancer (pre-treatment) | Hypertension | Osteoporosis |
| Clinically-confirmed Normal | Lipid Disorder | Psoriasis |
| Controls | Lupus | Rheumatoid Arthritis |
| Congestive Heart Failure | Metastatic Cancer | Stroke |
| COPD | Multiple Sclerosis | |
| Coronary Artery Disease | Neurological Diseases | |

Bioserve Fresh Frozen and FFPE Tissue Types

- | | | | |
|----------------|-------------|---------------------|---------|
| Adipose | Kidney | Pharynx | Thymus |
| Adrenal | Larynx | Pituitary | Thyroid |
| Aorta | Lip | Prostate | Tongue |
| Artery | Liver | Rectum | Tonsil |
| Bladder | Lung | Salivary Gland | Ureter |
| Blood | Lymph Node | Serum | Urethra |
| Bone | Mouth | Skeletal Muscle | Uterus |
| Brain | Muscle | Skin | Vagina |
| Breast | Nerve | Small Intestine | Vein |
| Cartilage | Omentum | Smooth Muscle | Vulva |
| Cervix | Ovary | Soft Tissue | |
| Colon | Pancreas | Spleen | |
| Esophagus | Parathyroid | Stomach | |
| Fallopian Tube | Parotid | Submandibular Gland | |
| Gall Bladder | Penis | Synovium | |
| Intestine | Peritoneum | Testis | |

We have it...



REPROCELL Bioserve has one of the largest commercial human tissue banks in the world. With more than 600,000 human samples, there is a good chance that our Global Biorepository already has what you need.

Our network has it...



Through the Bioserve Network, we are partnered with many other leading biorepositories. This expands our ability to source material and ensures that we can acquire the samples you need.

Or, we can collect it



With Bioserve's orphan disease network, rare human tissue samples are finally within reach. Through our Prospective Collections, we have custom procurement partnerships with specialty clinics all around the USA.