

Supplement of The Cryosphere, 12, 3577–3588, 2018
<https://doi.org/10.5194/tc-12-3577-2018-supplement>
© Author(s) 2018. This work is distributed under
the Creative Commons Attribution 4.0 License.



Supplement of

What historical landfast ice observations tell us about projected ice conditions in Arctic archipelagoes and marginal seas under anthropogenic forcing

Frédéric Laliberté et al.

Correspondence to: Frédéric Laliberté (laliberte.frederic@gmail.com)

The copyright of individual parts of the supplement might differ from the CC BY 4.0 License.

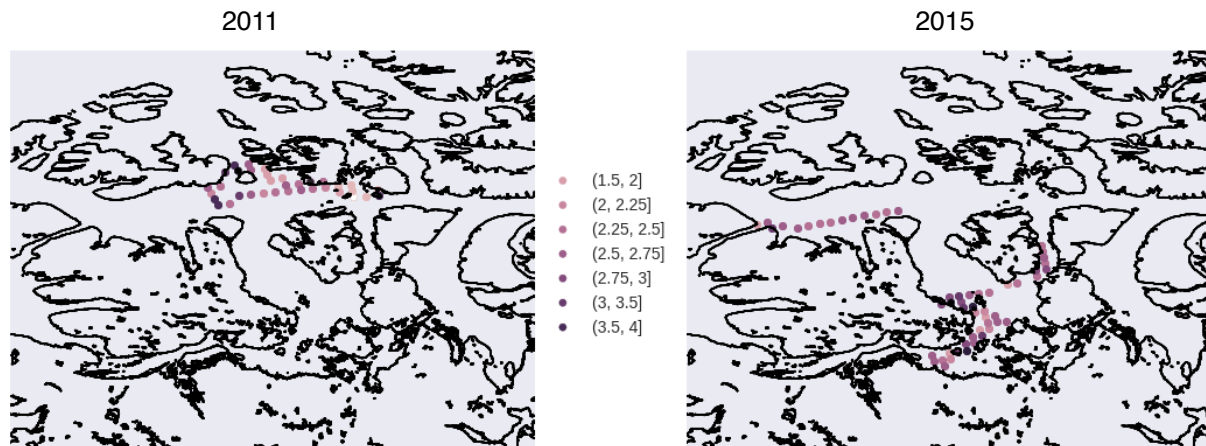


Figure S1. Airborne electromagnetic survey sea ice thickness in 2011 and 2015 averaged on a 25km EASE grid 2.0.

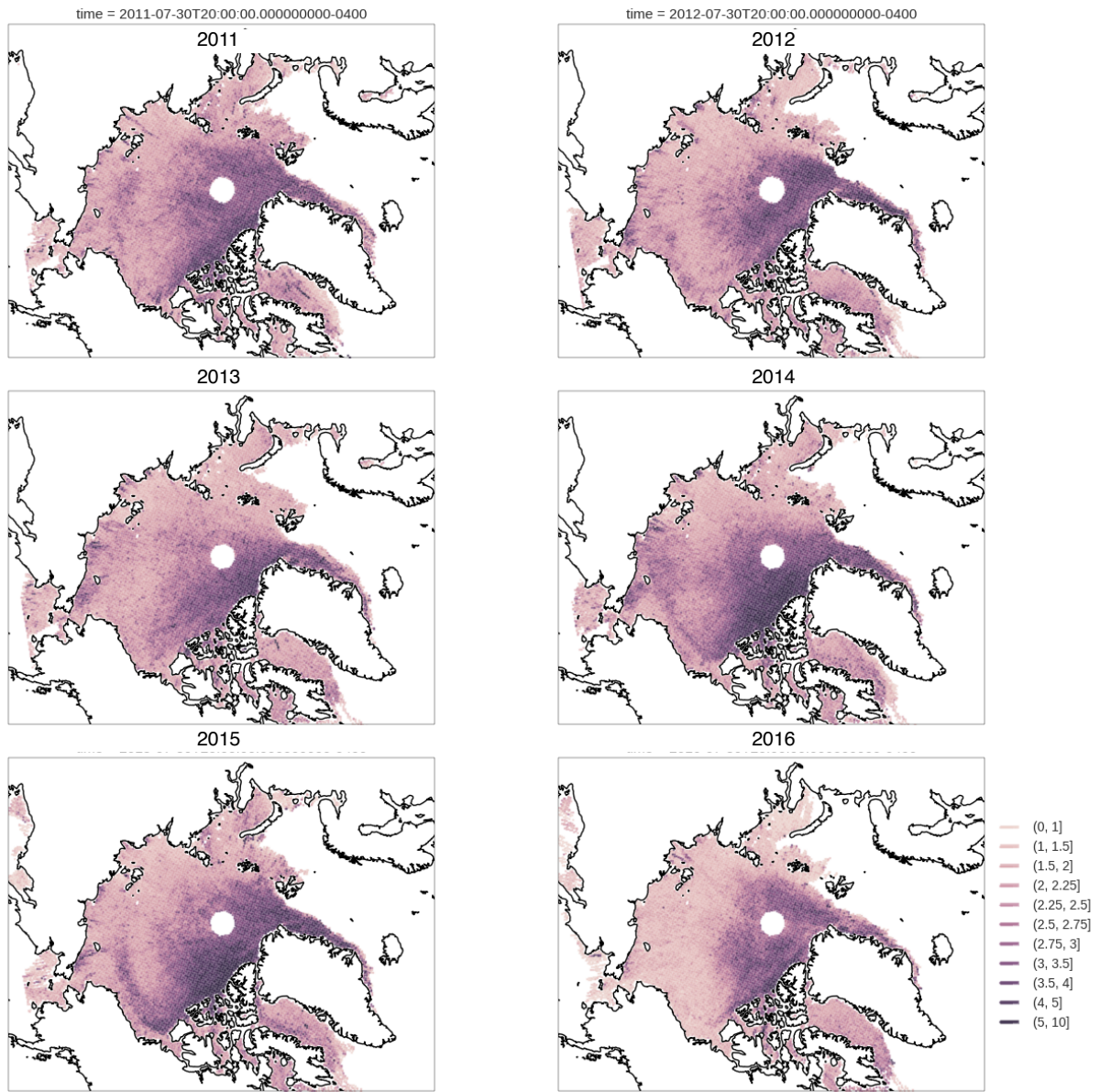


Figure S2. CryoSat2 annual maximum sea ice thickness from 2011 to 2016 on an EASE 2.0 grid.