

Brief communication: An Ice surface melt scheme including the diurnal cycle of solar radiation

Uta Krebs-Kanzow¹, Paul Gierz¹, and Gerrit Lohmann¹

¹Alfred Wegener Institute Helmholtz Centre for Polar and Marine Research, Bremerhaven, Germany

Correspondence: Uta Krebs-Kanzow (uta.krebs-kanzow@awi.de)

<https://doi.org/10.5194/tc-0-1-2018-supplement>

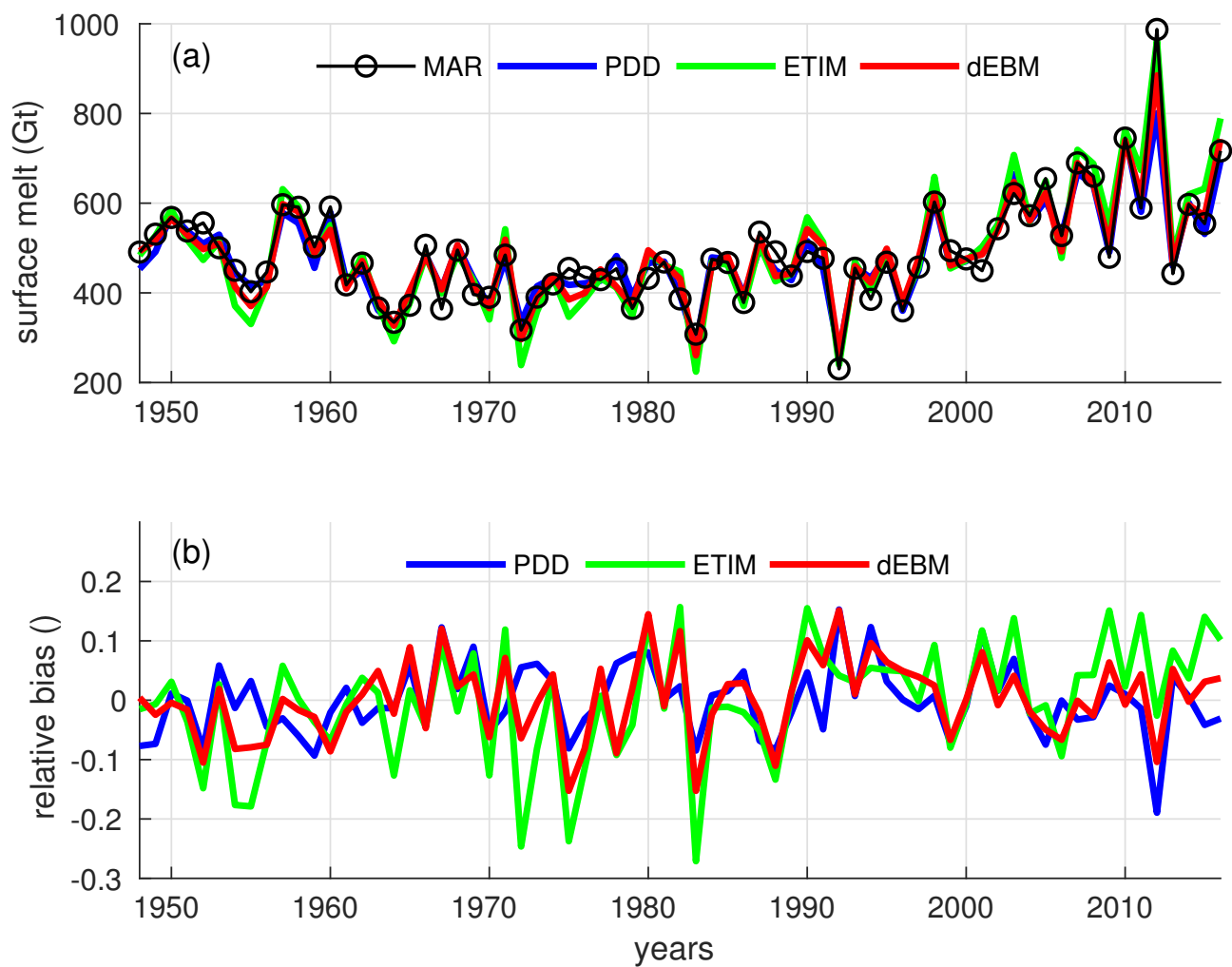


Figure S1. Multi-year monthly mean melt rates averaged of the years 1948-2016 as predicted by a) the PDD-scheme, b) the ETIM and c) the dEBM against respective MAR melt rates. Colors reflect the length of the daily melt period. Identity is displayed as a black line in all panels for comparison.