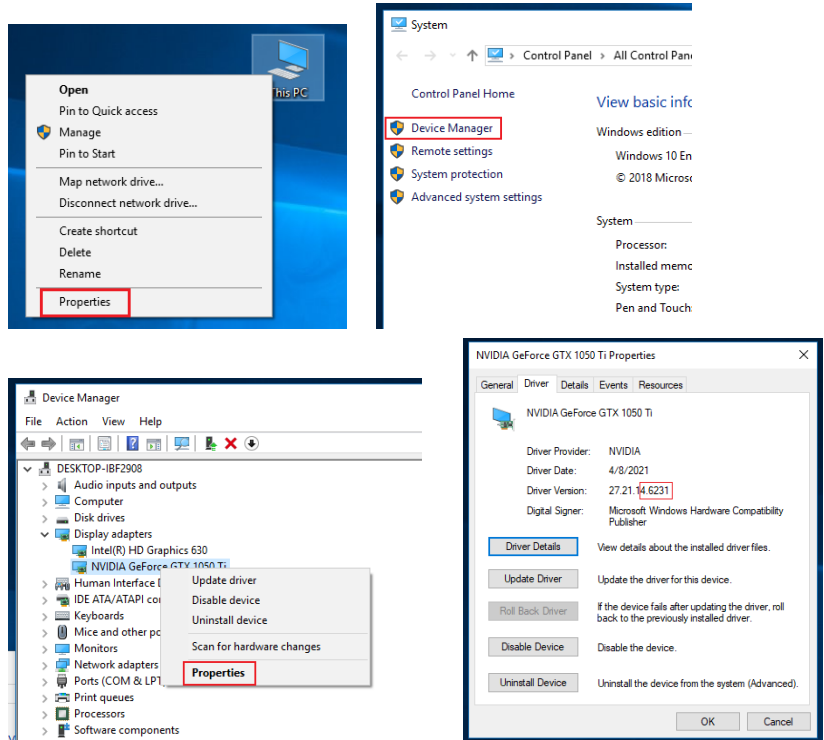


1. How to check the GPU driver version number?

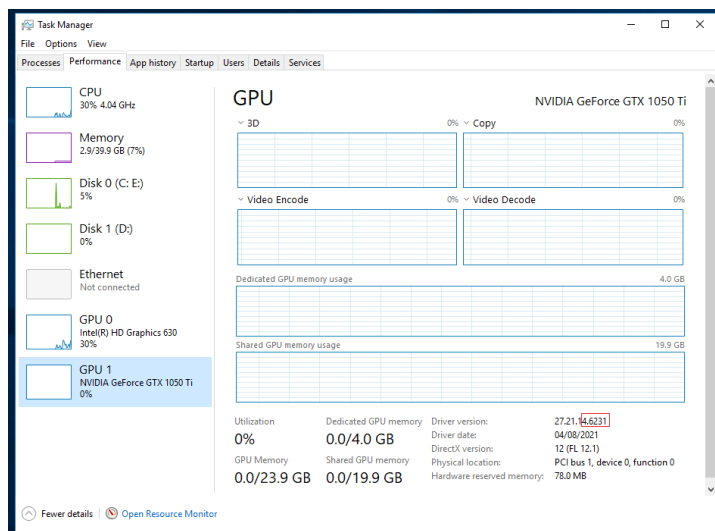
Method 1 (for Win 7, Win 10, Win 11)

Right-click "This PC", click "Properties", open "Device Manager", select the corresponding graphics card under "Display adapters" and right click, select "Properties", select "Driver", check the 5th-9th bit of "Driver Version", if it is smaller than 4.5239, you need to upgrade.



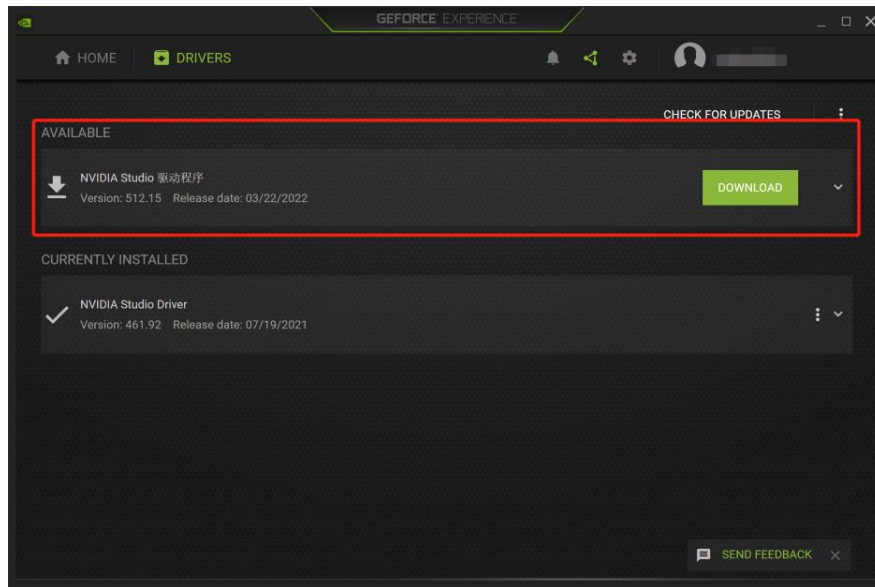
Method 2 (for Win10, Win 11)

Open "Task Manager" (Ctrl+Alt+Delete), enter the "Performance" interface, select the corresponding graphics card (GPU X), check the "Driver Version" information in the right panel. If the 5th-9th bit of "Driver Version" is less than 4.5239, then you need to upgrade.



Method 3 (for Win 7, Win 10, Win 11)

Install the official NVIDIA driver management software (GeForce Experience) <https://www.nvidia.cn/geforce/geforce-experience/>, open it and enter the "DRIVERS" page, check the currently installed driver, if the current driver version is less than 452.39, you need to upgrade.



2. How to upgrade the graphics card driver version?

Install the official NVIDIA driver management software (GeForce Experience) <https://www.nvidia.cn/geforce/geforce-experience/>, open it and enter the "DRIVERS" page, check the currently installed driver version and the available driver version (this requires Internet access), click "Download" and follow the prompts to install. After the installation is complete, it is recommended to restart the computer.

