

CALM_watersheds_2023_08_23

2022

2023

Junk_Sidama_river_channels_threshold_5

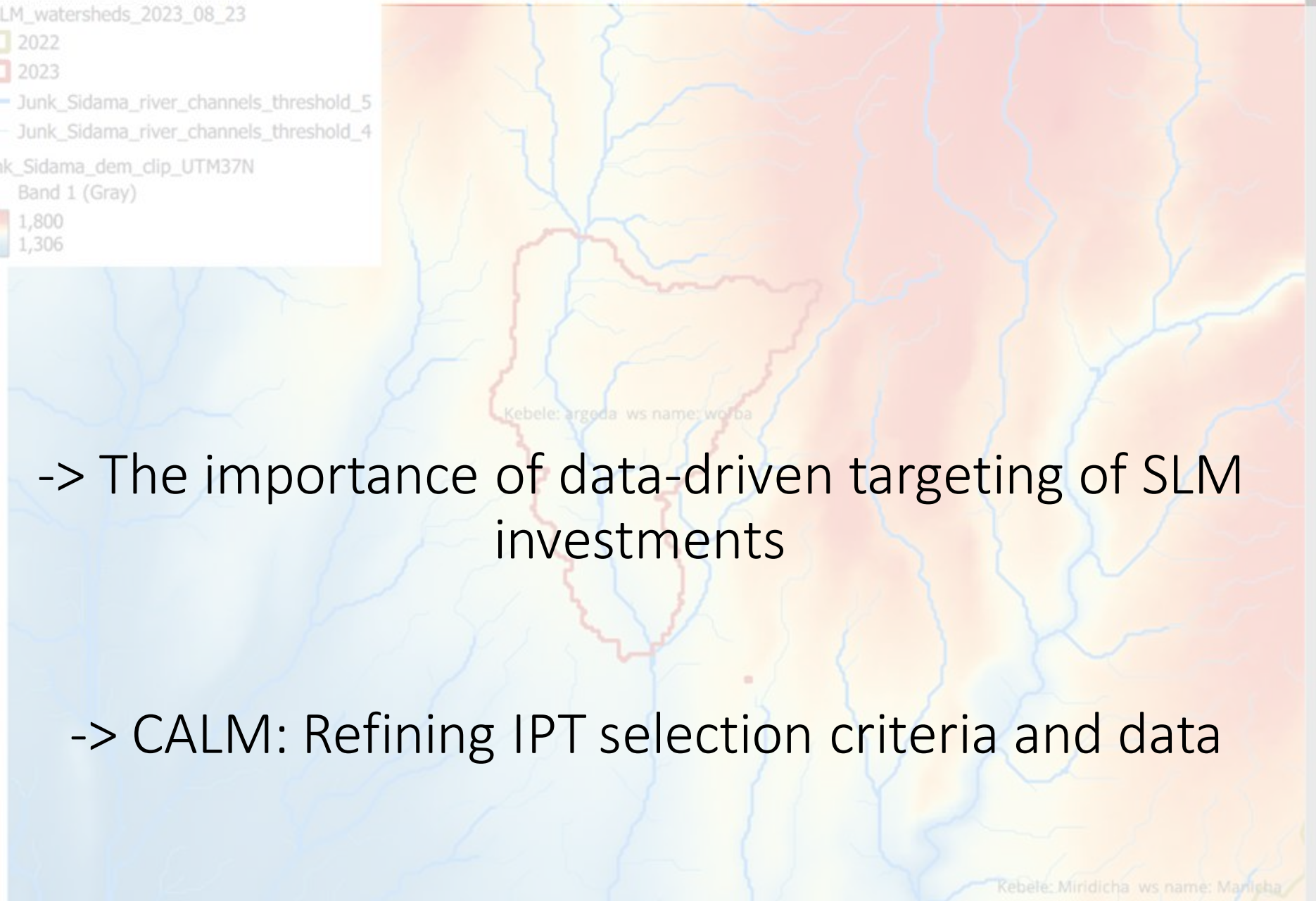
Junk_Sidama_river_channels_threshold_4

junk_Sidama_dem_clip_UTM37N

Band 1 (Gray)

1,800

1,306



-> The importance of data-driven targeting of SLM investments

-> CALM: Refining IPT selection criteria and data

Why data driven:

- Data-driven targeting of SLM investments can help to ensure that resources are directed to where they are most needed and where they will have the greatest impact.
- This is important because:
 - Land degradation is a complex problem with a variety of causes and impacts.
 - SLM interventions are not one-size-fits-all and need to be tailored to the specific needs of each location.
 - Resources for SLM are limited, so it is important to use them efficiently.

Benefits

- Data-driven targeting of SLM investments can lead to a number of benefits, including:
 - Increased effectiveness of SLM interventions
 - Improved efficiency of SLM investments
 - Enhanced transparency and accountability in SLM decision-making
 - Greater stakeholder engagement in SLM planning and implementation

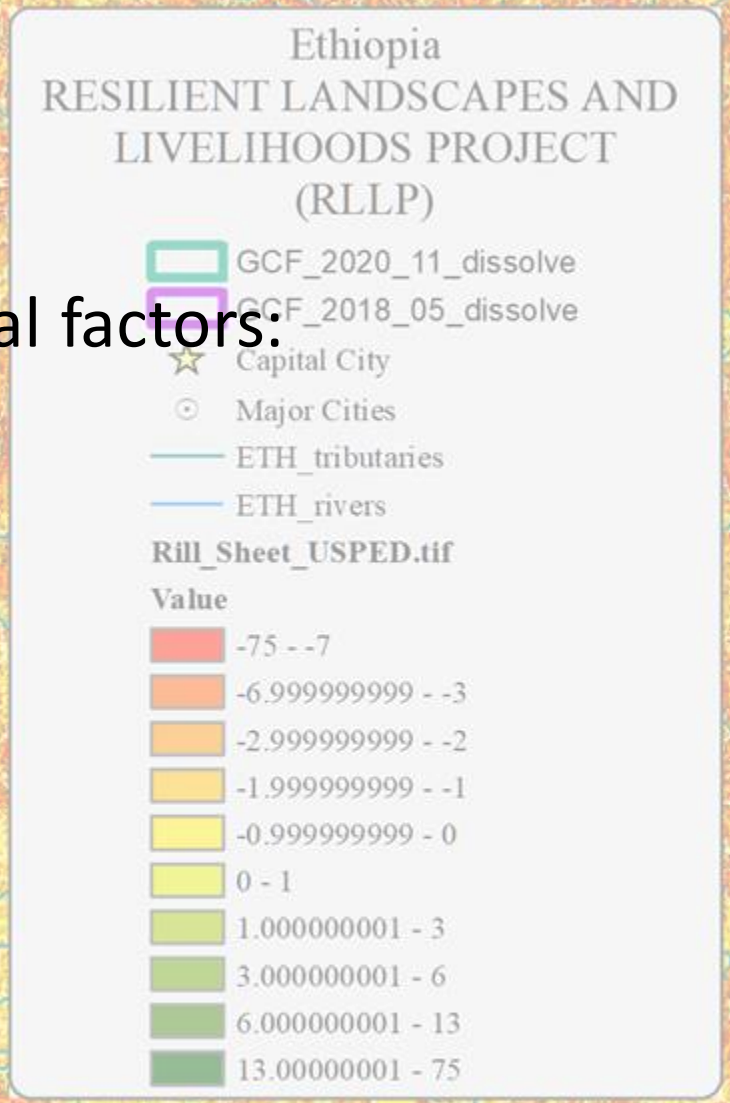
Challenges

- There are a number of challenges to data-driven targeting of SLM investments, including:
 - Lack of data availability and quality
 - Difficulty in accessing and sharing data
 - Capacity constraints in using data for decision-making



Past experiences

- Selection of RLLP II watersheds considered several factors:
 - Soil erosion
 - Climate change vulnerability

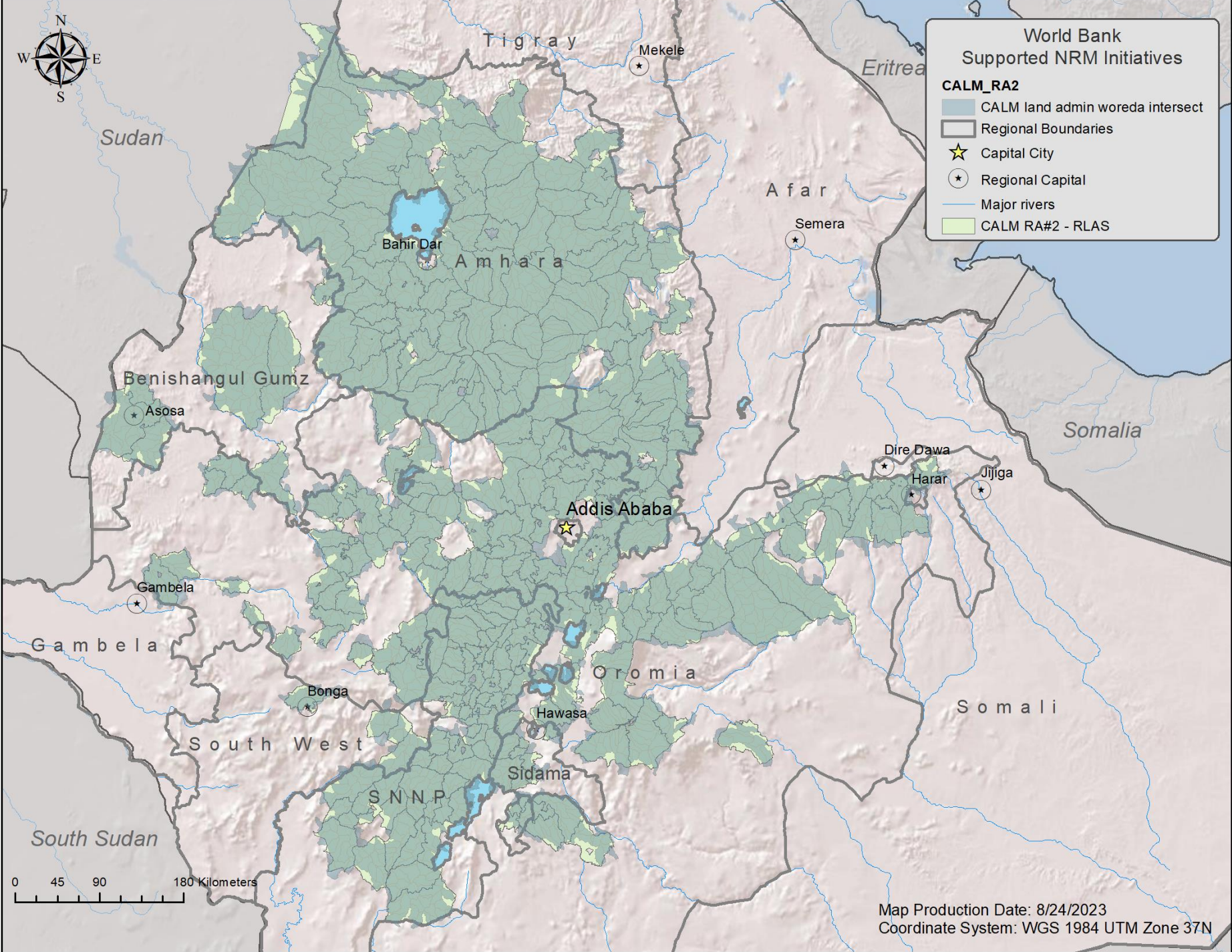


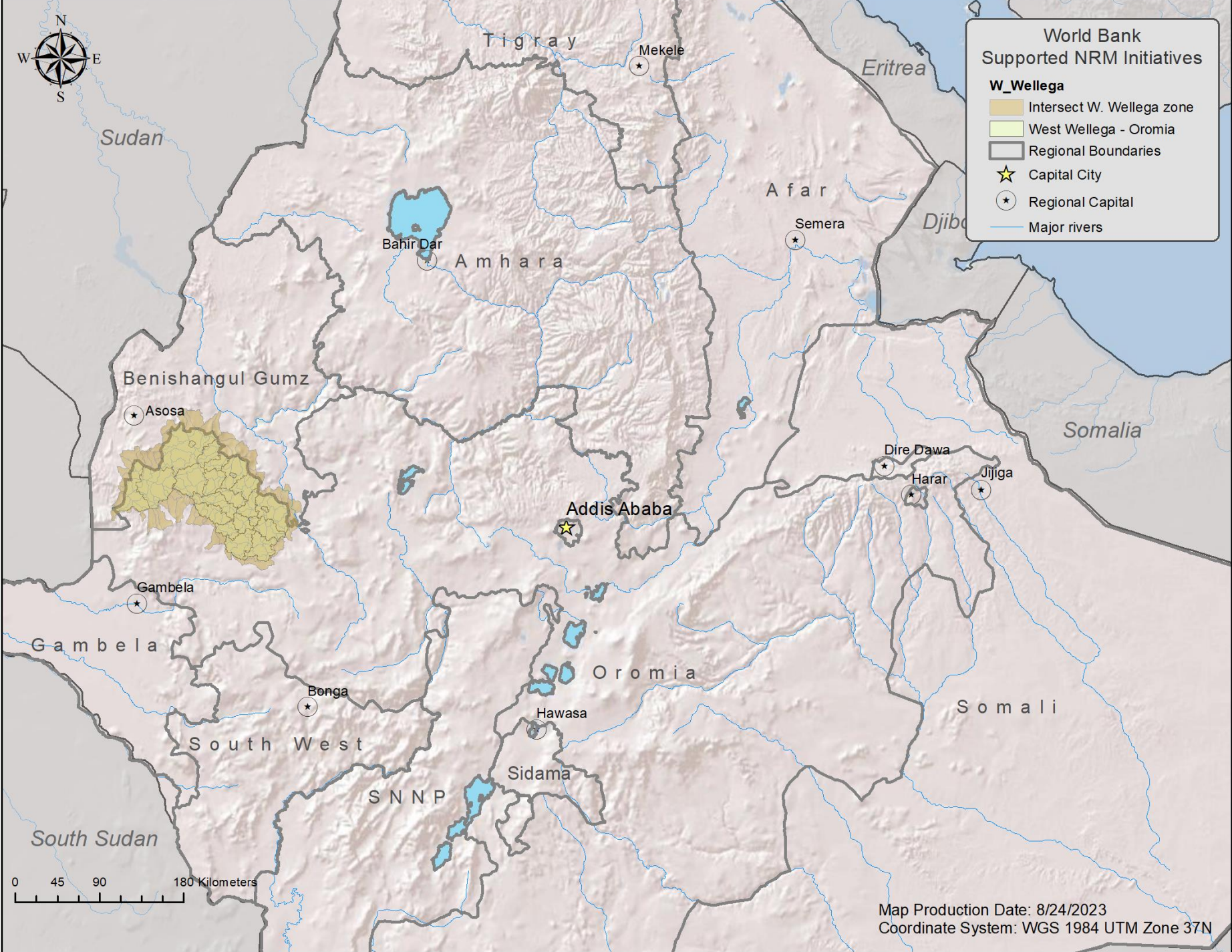
CALM

- Goal: IPT to inform the selection process (i.e. the next cohort of ~ 1200 micro-watersheds)
- Pre-screening
 - Areas to exclude
 - Areas for further focus, concentration

CALM

- Recall August Virtual mission...
- High-level screening criteria (WWF Hydroshed level 12)
 - Include for consideration if:
 - Existing CALM watershed
 - CALM land administration
 - Exclude from consideration if:
 - Conflict
 - Intersects with a protected area



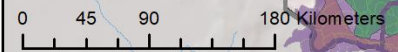
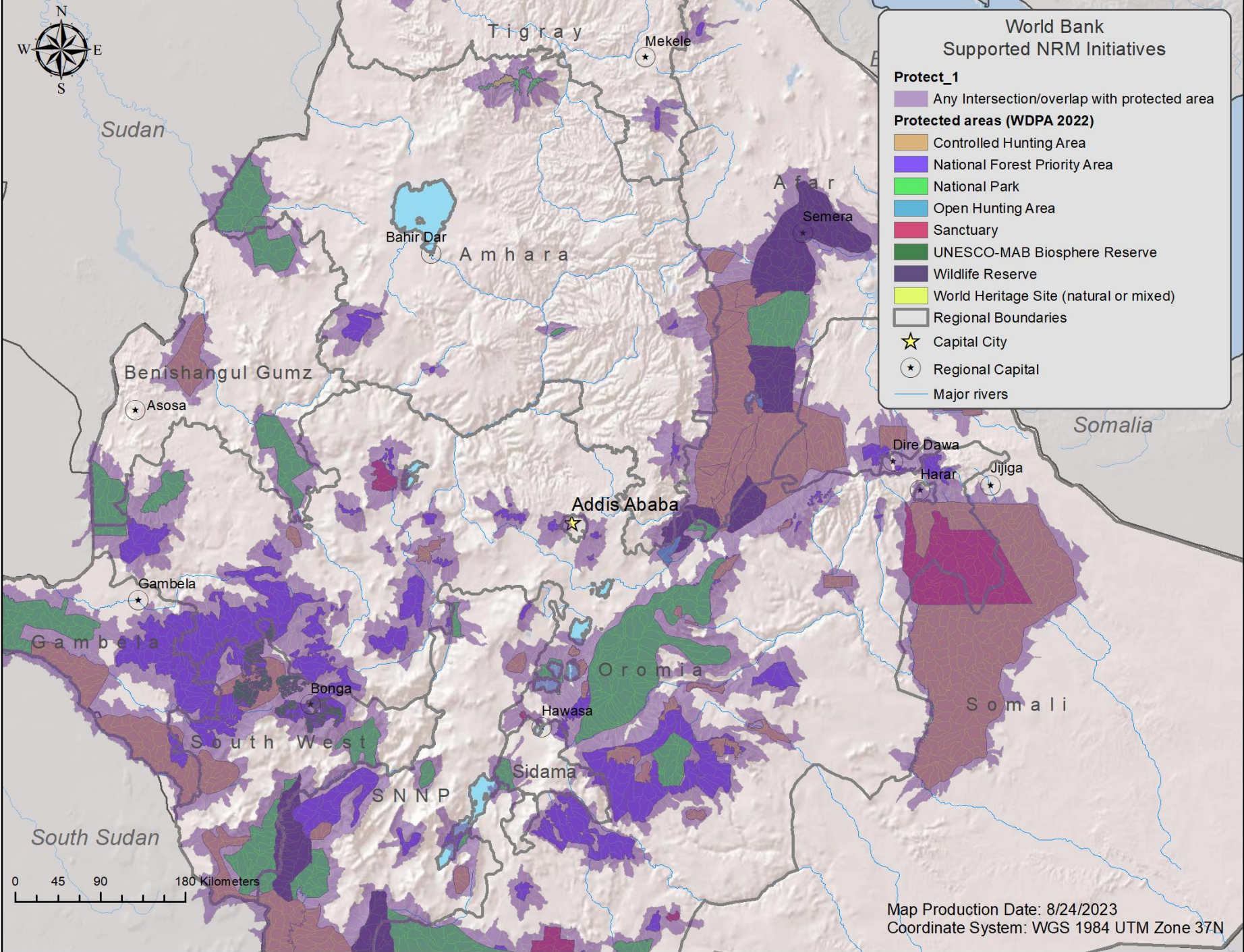


World Bank
Supported NRM Initiatives

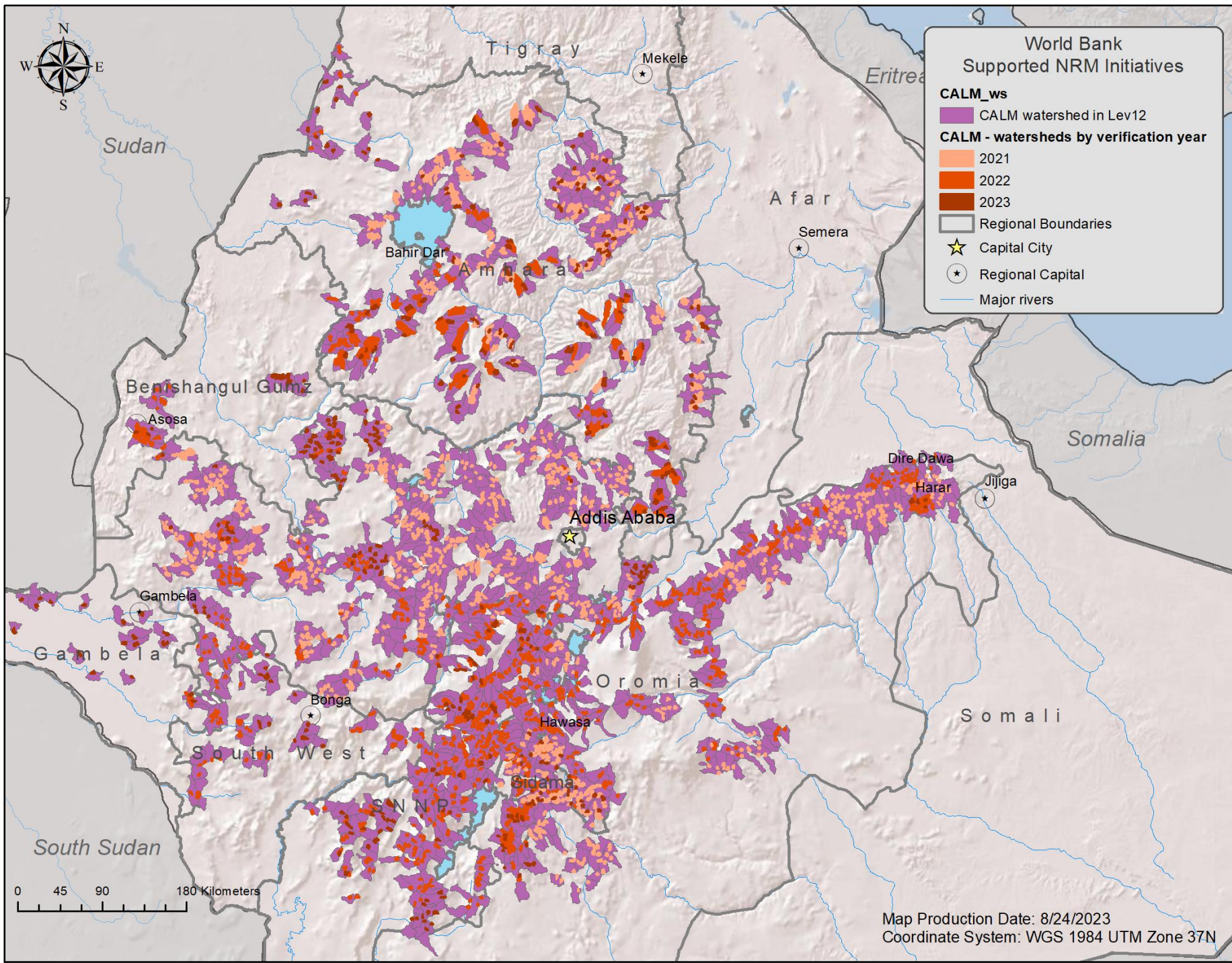
- W_Wellega**
- Intersect W. Wellega zone
 - West Wellega - Oromia
 - Regional Boundaries
 - Capital City
 - Regional Capital
 - Major rivers

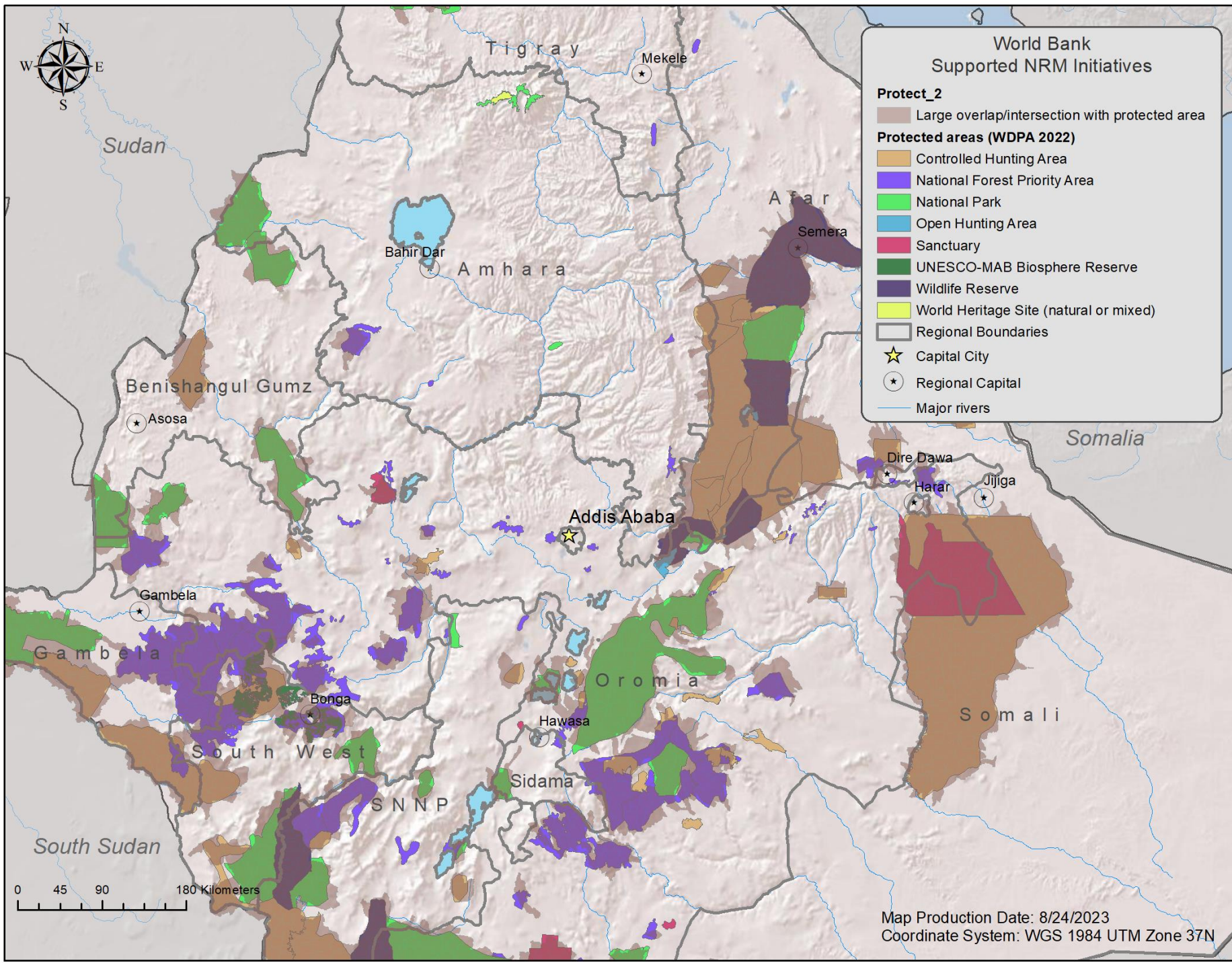
0 45 90 180 Kilometers

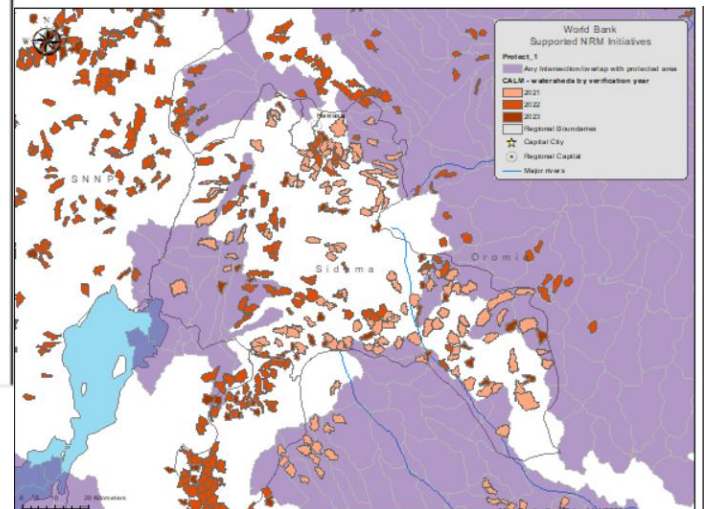
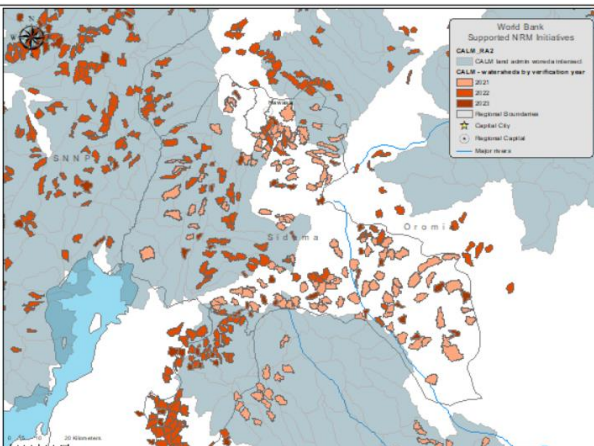
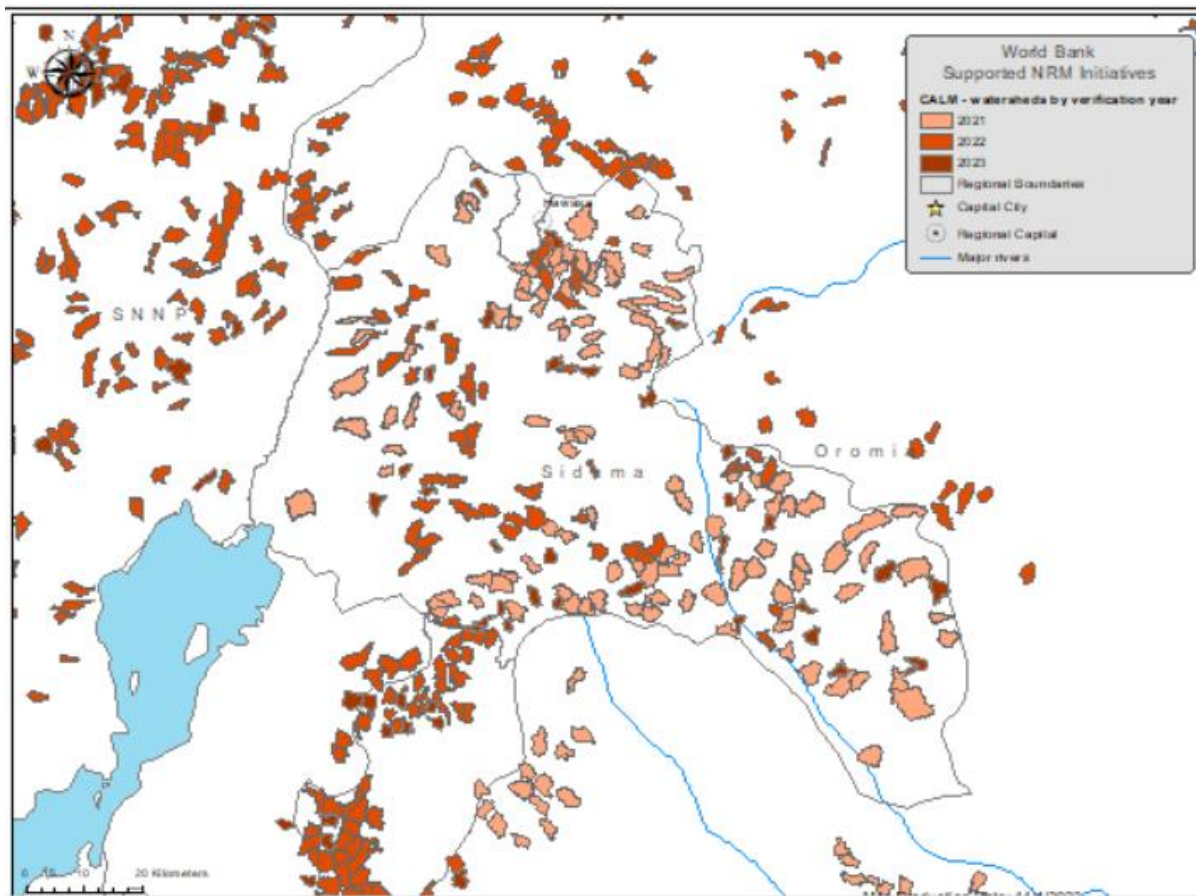
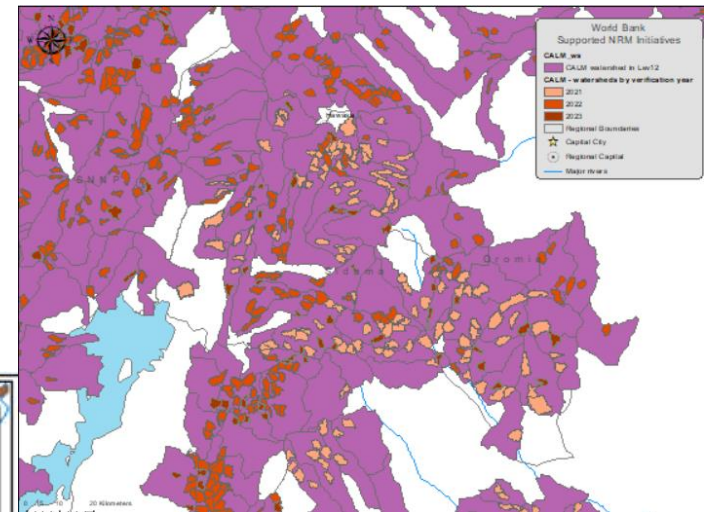
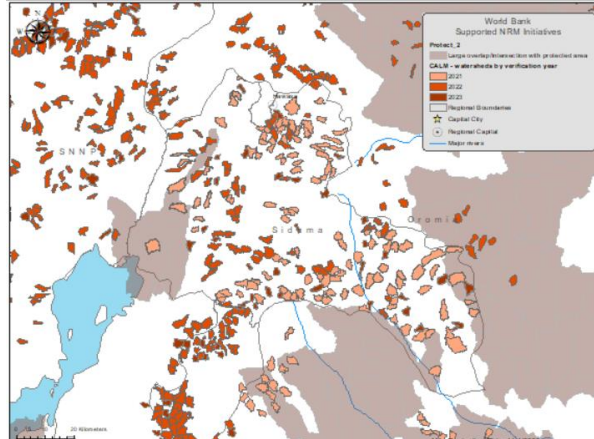
Map Production Date: 8/24/2023
Coordinate System: WGS 1984 UTM Zone 37N

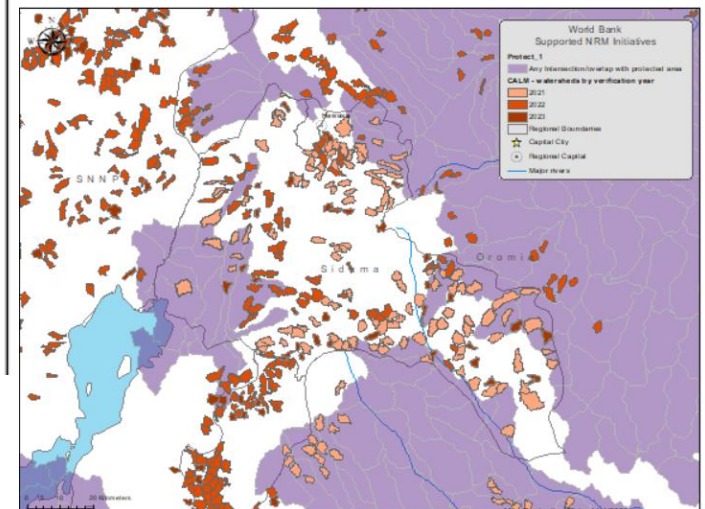
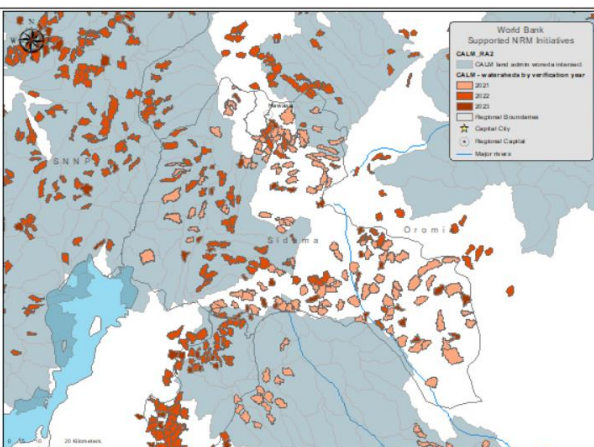
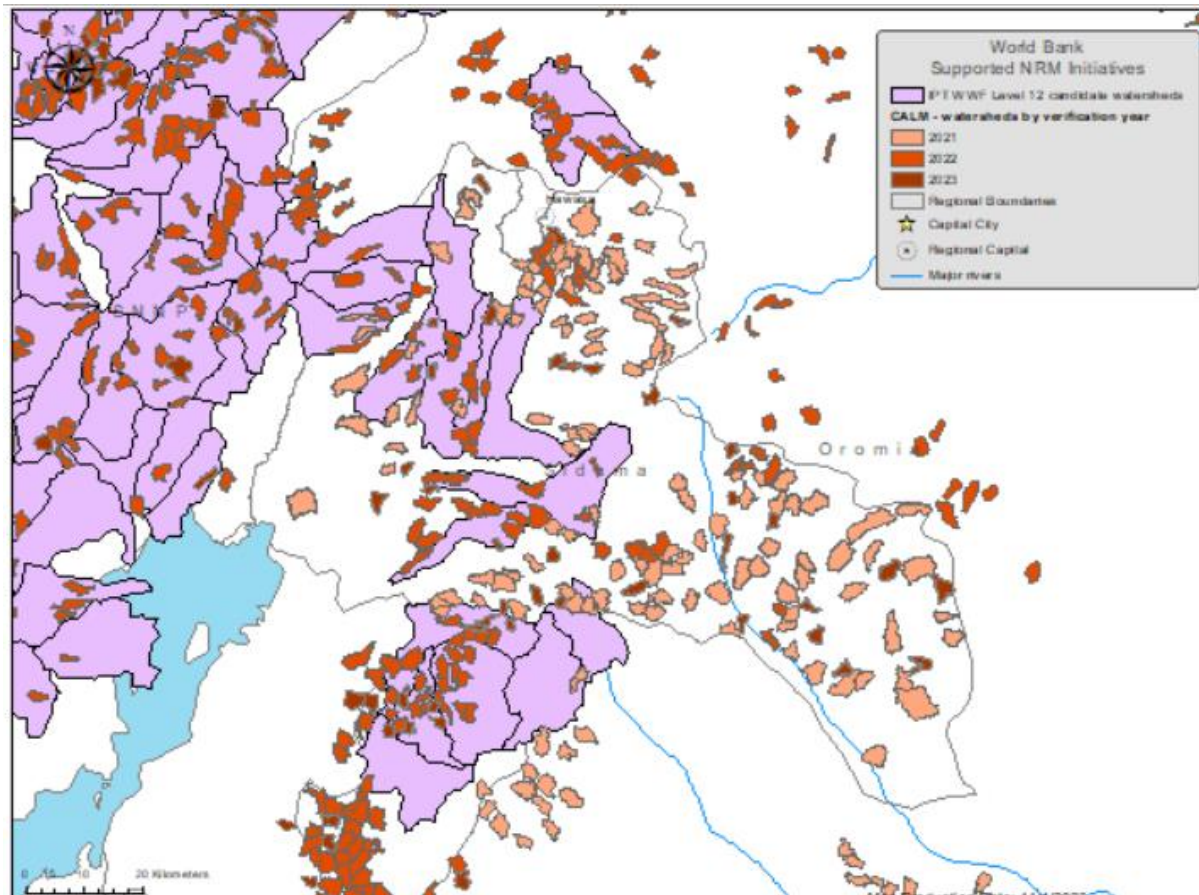
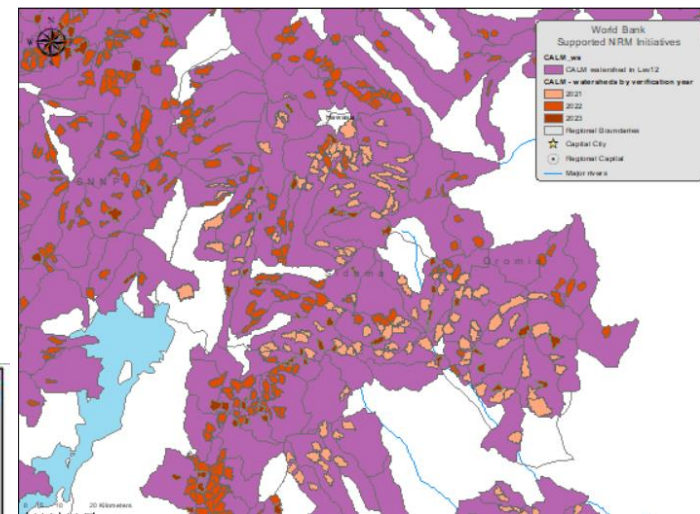
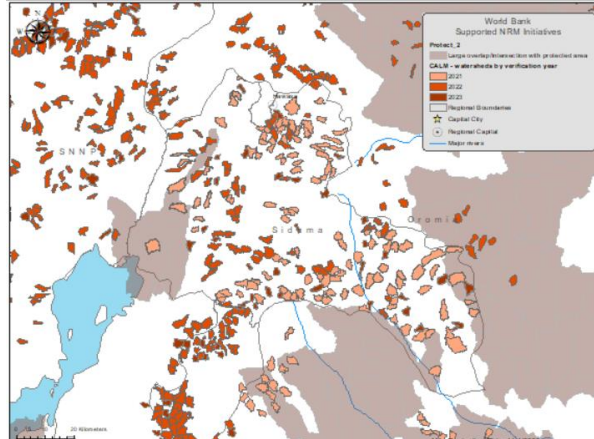


Map Production Date: 8/24/2023
Coordinate System: WGS 1984 UTM Zone 37N









CALM

- High-level screening criteria (WWF Hydroshed level 12)
 - Include for consideration if:
 - Existing CALM watershed
 - CALM land administration
 - Exclude from consideration if:
 - Conflict
 - Intersects with a protected area
- Regional considerations:
 - Further Exclusion?
 - Priorities?

Practical considerations

- IPT prioritization based on data and modeling that incorporates priorities/preferences
- Other practical considerations
 - Information not captured by IPT
 - Regional allocations
 - Political factors
 - Other inclusion/exclusion
- IPT envisioned to support the targeting of SLM investments – an input to the decision making process.
 - Inform decisions
 - NOT intended to dictate decisions

CALM Regional Break-out discussion

- Goal: IPT to inform the selection process (i.e. the next cohort of ~ 1200 micro-watersheds)
- Break-out discussion – regional preferences
 - CALM regional representatives:
 - Form group for each region. List preferences:
 - Criteria for inclusion/exclusion
 - Other preferences (i.e. promote lowland, is carbon important locally? In the absence of payment?, etc.)
 - Invasive species?
 - Other data
 - Complete micro-watershed delineation
 - (In possession of) Other data that could be a key input?
 - Functionality dashboard
 - Add/incorporate additional variables

CALM - Regional input/feedback

- Break-out discussion – regional preferences
- Provide input on the following:
 - Inclusion/exclusion
 - Previously:
 - Include for consideration if:
 - Existing CALM watershed
 - CALM land administration
 - Exclude from consideration if:
 - Conflict area
 - Intersects with a protected area
 - Preferences:
 - What are other important considerations? (i.e. promote lowland, is carbon important locally? In the absence of payment?, etc.)
 - Other Data