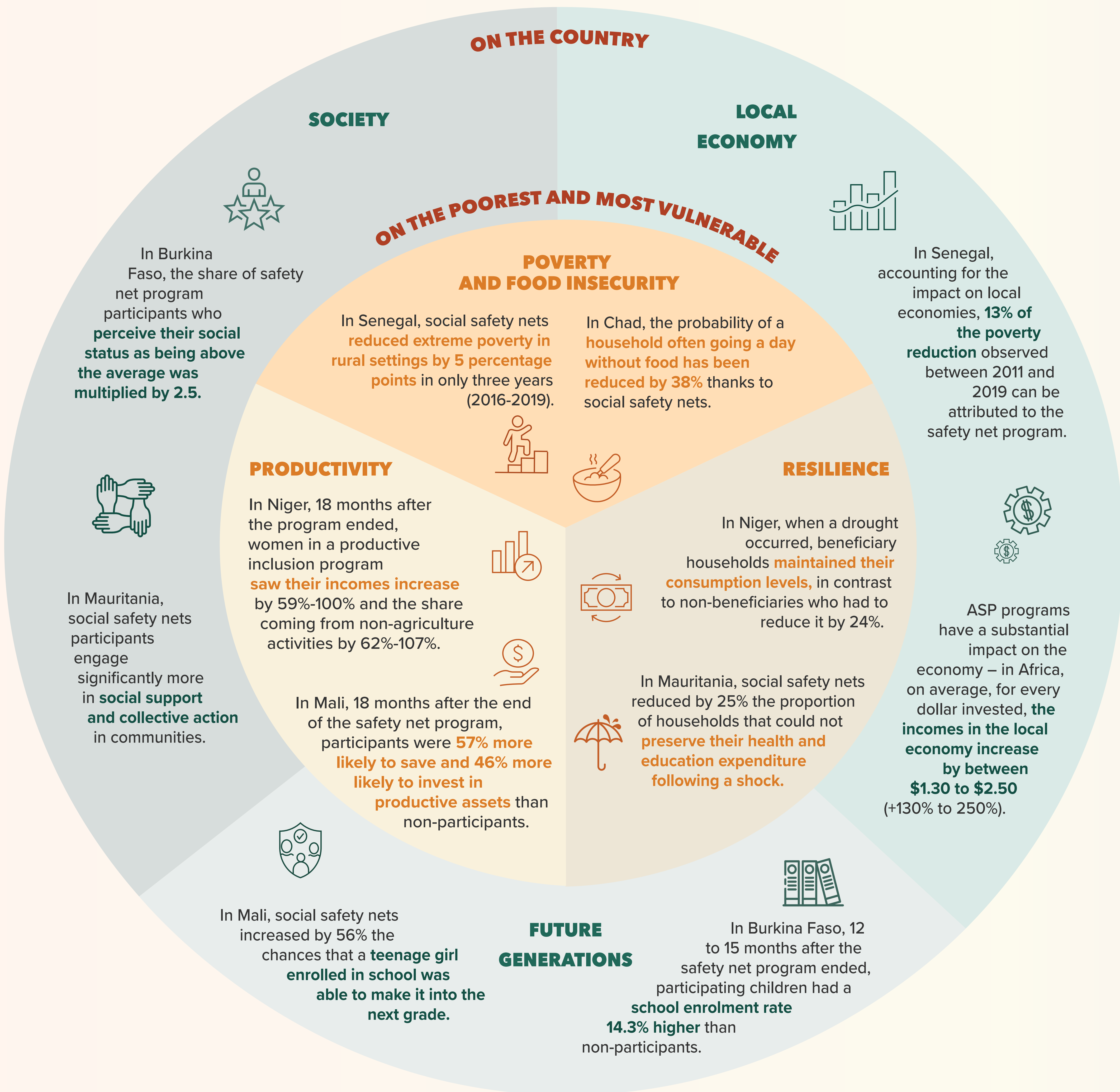


STRONG IMPACTS OF ADAPTIVE SOCIAL PROTECTION IN THE SAHEL

In the Sahel, **Adaptive Social Protection (ASP)** is a set of social protection policies, instruments and programs that promote the human capital, productivity and resilience of the poorest and strengthen their capacity to prepare for, cope with, and adapt to shocks.

ASP can have strong positive impacts on various dimensions in the Sahel: such as program participants' poverty levels, food insecurity, productivity and resilience; combined with significant broader impacts on the economy, society, and future generations.



The evidence presented to illustrate the impacts comes from rigorous impact evaluations of ASP programs, which can include social safety nets, productive inclusion, shock response and other social protection program.

To know more visit www.worldbank.org/saspp

