



Remote sensing-based estimation of gross primary production in a subalpine grassland

M. Rossini¹, S. Cogliati¹, M. Meroni^{1,2}, M. Migliavacca^{1,3}, M. Galvagno^{1,4}, L. Busetto^{1,5}, E. Cremonese⁴, T. Julitta¹, C. Siniscalco⁶, U. Morra di Cella⁴, and R. Colombo¹

¹Remote Sensing of Environmental Dynamics Laboratory, DISAT, Università degli Studi Milano-Bicocca, Milan, Italy

²European Commission, DG-JRC, Institute for Environment and Sustainability, Monitoring Agricultural Resources Unit, Ispra, VA, Italy

³European Commission, DG-JRC, Institute for Environment and Sustainability, Climate Risk Management Unit, Ispra, VA, Italy

⁴Agenzia Regionale per la Protezione dell'Ambiente della Valle d'Aosta, Sez. Agenti Fisici, Aosta, Italy

⁵European Commission, DG-JRC, Institute for Environment and Sustainability, Forest Resources and Climate Unit, Ispra, VA, Italy

⁶Plant Biology Department, Università degli Studi di Torino, Turin, Italy

Correspondence to: M. Rossini (micol.rossini@unimib.it)

Received: 2 January 2012 – Published in Biogeosciences Discuss.: 10 February 2012

Revised: 25 May 2012 – Accepted: 11 June 2012 – Published: 12 July 2012

Abstract. This study investigates the performances in a terrestrial ecosystem of gross primary production (GPP) estimation of a suite of spectral vegetation indexes (VIs) that can be computed from currently orbiting platforms. Vegetation indexes were computed from near-surface field spectroscopy measurements collected using an automatic system designed for high temporal frequency acquisition of spectral measurements in the visible near-infrared region. Spectral observations were collected for two consecutive years in Italy in a subalpine grassland equipped with an eddy covariance (EC) flux tower that provides continuous measurements of net ecosystem carbon dioxide (CO₂) exchange (NEE) and the derived GPP.

Different VIs were calculated based on ESA-MERIS and NASA-MODIS spectral bands and correlated with biophysical (Leaf area index, LAI; fraction of photosynthetically active radiation intercepted by green vegetation, $fIPAR_g$), biochemical (chlorophyll concentration) and ecophysiological (green light-use efficiency, LUE_g) canopy variables. In this study, the normalized difference vegetation index (NDVI) was the index best correlated with LAI and $fIPAR_g$ ($r = 0.90$ and 0.95 , respectively), the MERIS terrestrial chlorophyll index (MTCI) with leaf chlorophyll content ($r = 0.91$) and

the photochemical reflectance index (PRI_{551}), computed as $(R_{531} - R_{551}) / (R_{531} + R_{551})$ with LUE_g ($r = 0.64$).

Subsequently, these VIs were used to estimate GPP using different modelling solutions based on Monteith's light-use efficiency model describing the GPP as driven by the photosynthetically active radiation absorbed by green vegetation ($APAR_g$) and by the efficiency (ϵ) with which plants use the absorbed radiation to fix carbon via photosynthesis. Results show that GPP can be successfully modelled with a combination of VIs and meteorological data or VIs only. Vegetation indexes designed to be more sensitive to chlorophyll content explained most of the variability in GPP in the ecosystem investigated, characterised by a strong seasonal dynamic of GPP. Accuracy in GPP estimation slightly improves when taking into account high frequency modulations of GPP driven by incident PAR or modelling LUE_g with the PRI in model formulation. Similar results were obtained for both measured daily VIs and VIs obtained as 16-day composite time series and then downscaled from the compositing period to daily scale (resampled data). However, the use of resampled data rather than measured daily input data decreases the accuracy of the total GPP estimation on an annual basis.

1 Introduction

The availability of simultaneous acquisition of near-surface spectral observations and gas flux measurements quantified with the eddy covariance (EC) technique (Baldocchi et al., 1996) has notably increased in recent years (Sims et al., 2006a; Nakaji et al., 2007, 2008; Hilker et al., 2008a; Cheng et al., 2009; Middleton et al., 2009; Rossini et al., 2010) due to its potential to identify effective links between optical signals and photosynthesis at canopy level (Gamon et al., 2006, 2010). Currently, several research groups have developed different automatic devices to collect canopy spectral properties (Leuning et al., 2006; Hilker et al., 2007; Nakaji et al., 2007, 2008; Daumard et al., 2010; Hilker et al., 2010; Ide et al., 2010; Balzarolo et al., 2011; Meroni et al., 2011) for the purpose of gaining new insights into the quantification and monitoring of plant photosynthesis on a temporal scale. Such devices are generally operated automatically for long periods in the sampling area of flux towers. The increased availability of coupled spectral and flux measurements acquired with comparable temporal and spatial scales has encouraged the revision of existing approaches to modelling photosynthesis and the assessment of the potential for using remotely sensed inputs to spatially extrapolate at landscape level predictions of carbon exchange from information acquired at tower sites.

One of the most widely applied approaches to modelling gross primary production (GPP) based on remote sensing (RS) data is the light-use efficiency (LUE) model proposed by Monteith (1972, 1977), in which GPP is modelled as a function of the incident photosynthetically active radiation absorbed by vegetation (APAR), determined as the product of the fraction of photosynthetically active radiation absorbed by vegetation (f APAR) and the incident photosynthetically active radiation (PAR), and the conversion efficiency of absorbed energy to fixed carbon (light-use efficiency, ε).

Different studies have used RS-derived quantities to feed the LUE model (Hilker et al., 2008b; Coops et al., 2010; Rossini et al., 2010; Penuelas et al., 2011).

f APAR is usually modelled as a function of VIs. Besides the normalized difference vegetation index (NDVI, Rouse et al., 1974), several recent satellite products or indexes (e.g. enhanced vegetation index (EVI), Huete et al., 2002) have been explored to estimate f APAR. With the advent of hyperspectral RS and the availability of commercial sensors and field instruments, the exploration of a number of different wavelengths and VIs has been promoted to estimate f APAR (Inoue et al., 2008).

A more challenging component of the Monteith model to be inferred from RS is ε . In most LUE models, ε is expressed as a biome-specific constant at its potential maximum, adjusted for unfavourable environmental conditions (e.g. limitations of temperature, humidity, soil moisture, etc.) (Nouvellon et al., 2000; Veroustraete et al., 2002; Heinsch et al., 2006). Some attempts have recently been made to directly infer ε from RS data by exploiting variations in vegetation

spectral properties resulting from photoprotection, a process closely linked to photosynthesis. For this purpose, Gamon et al. (1990) originally proposed to exploit changes in reflectance in a narrow-waveband interval centered at 531 nm to track the xanthophyll de-epoxidation state and formulated the photochemical reflectance index (PRI, Gamon et al., 1992):

$$\text{PRI} = \frac{R_{531} - R_{\text{ref}}}{R_{531} + R_{\text{ref}}} \quad (1)$$

where R_{ref} is a xanthophyll-insensitive reference band. Several studies have demonstrated that ε can be successfully estimated with PRI at leaf (Meroni et al., 2008a), canopy (Evain et al., 2004; Meroni et al., 2008b) and ecosystem (Drolet et al., 2005, 2008; Middleton et al., 2009, 2011) scale.

An alternative approach recently proposed to directly infer ε from RS exploits the link between carbon fixation and sun-induced chlorophyll fluorescence, derived from the oxygen absorption band located at 760 nm (Meroni et al., 2009). Tests of this method have been limited to few studies (Damm et al., 2010; Rossini et al., 2010; Frankenberg et al., 2011; Joiner et al., 2011), and, consequently, the potential of this approach has not yet been fully evaluated.

Another approach to estimating GPP proposed in recent years builds on a simplified version of Monteith's model, which does not need independent estimates of the f APAR and the ε terms. Based on the assumption that chlorophyll is related to the presence of photosynthetic biomass, which is essential for primary production and thus conceptually related to GPP (Sellers et al., 1992), recent studies (Gitelson et al., 2008; Harris and Dash, 2010) suggest that GPP can be estimated through direct correlation with chlorophyll-related indexes. Successful results have been obtained in agricultural crops (Gitelson et al., 2008). In this study, the investigated crops did not suffer short-term environmental stresses. In such conditions, an independent estimate of ε can be unnecessary due to its correlation with chlorophyll content, allowing the use of chlorophyll-related VIs as a proxy of photosynthesis or primary productivity (Sims et al., 2006a). However, these models are unable to model high frequency GPP variations due to changing illumination conditions. To take into account these variations, several studies modelled GPP as the product of VIs and the incident PAR (Gitelson et al., 2006; Wu et al., 2009; Peng et al., 2011).

From this overview of RS approaches currently adopted to estimate GPP, it is evident that, although the ability to model GPP has increased considerably in recent years, a unique model for GPP estimation valid across different ecosystems and a wide range of environmental conditions has not yet been identified (Hilker et al., 2008b; Coops et al., 2010; Penuelas et al., 2011). The proposed research strives to improve our understanding of the links between optical and flux measurements to help developing models suitable for determination of global productivity from space.

In this study, two years of field spectroscopy measurements acquired with an automatic spectral system (Meroni et al., 2011) on a subalpine grassland equipped with an EC tower have been analysed to: (1) evaluate the potential of automatic continuous spectral measurements to monitor the seasonal development of a grassland ecosystem and (2) test the performances of different LUE model formulations driven by RS indexes and meteorological data to estimate GPP. While several studies have evaluated the possibility of modelling grassland GPP based on RS indexes derived from satellite data (Sims et al., 2006b; Li et al., 2007; Harris and Dash, 2010), we are aware of only one study, by Wohlfahrt et al. (2010), that investigated the relationship between EC-derived carbon fluxes and ground measurement of NDVI collected at similar temporal (i.e. daily) and spatial scale in a mountain grassland. In this study, near-surface spectral measurements were resampled at the same spectral and temporal resolution as the National Aeronautics and Space Administration's (NASA) Moderate Resolution Imaging Spectrometer (MODIS) and the European Space Agency's (ESA) Medium Resolution Imaging Spectrometer (MERIS) onboard Envisat to evaluate the usefulness of currently available global satellite mission observations for modelling GPP by means of the LUE approach. Thus, the research presented in this paper is expected to advance our current ability to monitor and model grassland photosynthesis and it should be useful for the future application of these models to better quantify CO₂ fluxes in different terrestrial ecosystems.

2 Materials and methods

2.1 Experimental site

The study site is an unmanaged grassland of the subalpine belt located in the northwestern Italian Alps (45°50'40" N, 7°34'41" E, Torgnon, Aosta Valley) at 2160 m a.s.l. (Migliavacca et al., 2011). The vegetation of the site is composed mainly of matgrass, and the dominant species are *Nardus stricta*, *Arnica montana*, *Trifolium alpinum* and *Carex sempervirens*. The area is classified as an intra-alpine region with semi-continental climate with an annual mean temperature of 3.1 °C and mean annual precipitation of about 920 mm (Mercalli and Berro, 2003). The snow-free period lasts generally from late May to early November.

2.2 Biochemical and structural field data

Leaf area index (LAI) was determined destructively every two weeks during the two growing seasons (2009 and 2010) at 12 plots of 30 × 30 cm. Collected phytomass was kept on ice and transported to the laboratory. Sample leaves were run through an area meter (Model LI-3100, Li-Cor, Inc., Lincoln NE) and the LAI was determined. Total LAI for the 12 plots was then averaged to obtain a site-level value. Further-

more, in correspondence to the 12 plots identified for LAI estimation, a nadir picture of an area of 50 × 50 cm of the canopy (identified by a square positioned on the ground) was acquired every week. The collected images were then analysed with the WinCAM software (Regent Instruments Inc., Quebec, Canada) to classify the percentage of photosynthetic (green) and non-photosynthetic (yellow and dry leaves) components of the canopy during the growing season. The percentage of green components of the canopy derived from image classification was fitted with a forth-order polynomial to obtain the seasonal courses of greenness at daily time-step.

The fraction of photosynthetically active radiation intercepted by vegetation (*f*IPAR) was computed using measurements from four LI-190 PAR sensors (Li-Cor, Inc., Lincoln NE): one sensor was installed above the canopy at a height of 2.20 m, while three sensors were positioned on ground below the canopy at a distance of approximately 2 m from one another. *f*IPAR was then computed as

$$fIPAR = \frac{PAR_i - PAR_r}{PAR_t} \quad (2)$$

where PAR_i, PAR_t and PAR_r are the incident, transmitted and reflected PAR, respectively.

In the grassland studied, yellow and/or dead biomass represented a significant fraction of the above-ground biomass during much of the growing season. To adjust the interception of this non-photosynthetic biomass in the calculation of *f*IPAR, the fraction of standing green vegetation derived from the analysis of nadir pictures was multiplied by *f*IPAR to give an estimation of "green" or photosynthetic *f*IPAR (*f*IPAR_g, Hall et al., 1992).

Furthermore, in 2010, leaf samples were collected every ten days at the 12 plots used for LAI estimation. Leaf samples were immediately stored in sealed plastic bags, kept fresh in an ice chest until transported to the laboratory and stored at −80 °C. Leaf pigments were extracted in the following days with *N,N*-dimethylformamide (DMF) from 100 mg of fresh biomass. The tissue samples were crushed by adding liquid nitrogen, ground in 10 ml DMF for 2 h and then centrifuged (Thermo Electron Corporation Mod. PK110) at 4000 rpm for 25 min to remove particulates. The absorbance of the extracted solutions was measured at 663.8 and 646.8 nm by a Varian UV-Visible Cary100 spectrophotometer. Chlorophyll *a* and chlorophyll *b* concentrations per unit leaf mass (µg g^{−1}) were then calculated using the extinction coefficients derived by Porra et al. (1989).

2.3 Eddy covariance and meteorological data

The turbulent vertical fluxes of CO₂ and latent and sensible heat were measured using the EC technique (Baldocchi et al., 1996). According to EUROFLUX methodology (Aubinet et al., 2000), only half-hourly data in which the theoretical requirements of the EC technique are fulfilled were retained for the following analyses and gap filling techniques were

used to re-create continuous net ecosystem exchange (NEE) time series. To evaluate temporal variations of CO₂ fluxes and compare these data with spectral measurements, half-hourly measurements of NEE were partitioned into ecosystem respiration and GPP. For the gap-filling and partitioning, the marginal distribution sampling (MDS) method and the partitioning method described in Reichstein et al. (2005), implemented in the online tool (<http://www.bgc-jena.mpg.de/bgc-mdi/html/eddyproc/>), were used. Different CO₂ flux metrics were used in the analyses: daily midday average GPP (GPP_m, μmol CO₂ m⁻² s⁻¹) computed for the same time period used for spectral properties (11:00–13:00 local solar time) and daily cumulated GPP (GPP_d, g C m⁻² d⁻¹). A detailed description of the EC flux measurements and flux footprint is reported in Migliavacca et al. (2011). Since only PAR absorbed by photosynthetic pigments (approximated with IPAR_g in this study) enables photosynthesis processes, to provide more realistic LUE estimates, a “green” LUE (LUE_g, Zhang et al., 2009) was computed:

$$\text{LUE}_g = \frac{\text{GPP}}{f\text{IPAR}_g \times \text{PAR}} = \frac{\text{GPP}}{\text{IPAR}_g} \quad (3)$$

[μmol CO₂ μmol⁻¹ photon]

Along with EC fluxes, the main meteorological variables were measured with a time step of 30 min; among these, the incident PAR and air temperature were measured above the grassland by means of a quantum sensor (LI-190s, LICOR Inc.) and a shielded thermo-hygrometer (HMP45C, Vaisala Inc., Woburn MA, USA), respectively. Precipitation was measured using a tipping bucket rain gauge (CS700, Campbell Scientific, Logan, Utah, USA); soil water content (SWC) was measured with water content reflectometers (CS-616, Campbell Scientific, Logan, Utah, USA) installed at two different depths (5–30 cm).

2.4 Radiometric measurements and spectral index computation

Canopy radiance spectra were collected using the hyperspectral irradiometer (HSI, Meroni et al., 2011). This instrument is designed for unattended high temporal frequency acquisition of high spectral resolution radiometric measurements. HSI employs a rotating arm equipped with a cosine-response optic to observe alternately the sky and the target surface, thus allowing the computation of the bi-hemispherical reflectance factor (BHR, Schaepman-Strub et al., 2006). HSI uses two HR4000 (Ocean Optics, USA) spectrometers sharing the same optical signal: one covering the visible and near-infrared range (400–1000 nm) with a full width at half maximum (FWHM) of 1 nm; and the other providing higher spectral resolution (0.1 nm FWHM) within a narrower spectral interval (700–800 nm) in the near-infrared. In this study, only the visible and near-infrared spectrometer was used. The spectrometer was spectrally calibrated with a source of known characteristics (CAL-2000 mercury ar-

gon lamp, Ocean Optics, USA), while the radiometric calibration was inferred from cross-calibration measurements performed with a calibrated FieldSpec FR Pro spectrometer (ASD, USA). This spectrometer is calibrated by the manufacturer with yearly frequency. Furthermore, the stability of the spectral calibration is regularly assessed during the season using field measured data and the SpecCal algorithm (Meroni et al., 2010; Busetto et al., 2011). The instrument was installed in the proximity of the EC tower at a height of 3.5 m above the investigated surface using a dedicated tower, thus allowing the measurement of the BHR with a nadir viewing geometry. With this configuration, 97 % of the total signal comes from a circular ground area with a radius of about 20 m.

Unattended operations were carried out during the snow-free season in 2009 and 2010. During 2009, the instrument was operated between 9 June and 17 October and in 2010 from 20 May to 15 October. Spectral measurements were acquired every 5 min during daylight hours. Only data collected close to solar noon (between 11:00 and 13:00 local solar time) were used for the analyses to minimize changes in solar angle. The spectral system was operated automatically through dedicated software (Meroni and Colombo, 2009). For each acquisition session, the following spectra were collected: spectrometer dark current, incident irradiance, upwelling irradiance and finally incident irradiance again. The target measurement was “sandwiched” between two downwelling irradiance measurements collected some seconds apart. The incident irradiance at the time of target measurement was then computed by linear interpolation. For every acquisition, ten scans were averaged and stored as a single file.

Collected data were processed with a specifically developed IDL (ITTVIS IDL 7.1.1) application. This application allowed the basic processing steps of raw data necessary for the computation of BHR and the application of a set of quality criteria for automatic data selection, described in Meroni et al. (2011). These criteria are intended to identify poor-quality data due to unfavourable meteorological conditions (e.g. clouds, rain or fog) or instrumental causes (e.g. problems in the optimization procedure). Whenever one of the quality criteria was not satisfied, the measurement was rejected and excluded from further analyses.

For each retained measurement, canopy reflectance spectra were used to simulate MERIS and MODIS spectral bands, on the basis of the spectral bandwidths and spectral response functions of the two sensors. The different positions of MODIS and MERIS bands are shown in Fig. 1 on the grassland spectra. The list of spectral indexes investigated in this study is reported in Table 1. The NDVI, EVI and PRI spectral indexes were computed from MODIS-simulated data, while the MTCI index was computed from MERIS-simulated data. In particular, the MODIS PRI was calculated using the MODIS band 11, centered at 531 nm, which is affected by the xanthophyll de-epoxidation state, and the

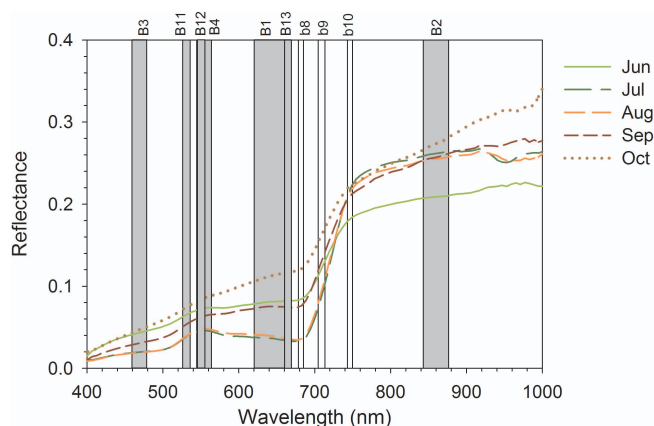


Fig. 1. Temporal changes of monthly grassland reflectance spectra collected at midday during 2009. Grey shaded areas represent the position and bandwidth of the MODIS spectral bands: B1 centered at 645 nm, B2 at 858.5 nm, B3 at 469 nm, B4 at 555 nm, B11 at 531 nm, B12 at 551 nm and B13 at 667 nm. White areas represent those of the MERIS sensor: b8 centered at 681.25 nm, b9 at 708.75 nm and b10 at 753.75 nm.

spectral bands 1 (620–670 nm) (PRI_{645}), 4 (545–565 nm) (PRI_{555}), 12 (546–556 nm) (PRI_{551}), and 13 (662–672 nm) (PRI_{667}) as potential reference bands, in accordance with recent studies (Drolet et al., 2005, 2008; Goerner et al., 2011).

Daily time series of solar-noon spectral indexes were then computed by daily averaging the index values collected between 11:00 and 13:00 local solar time. Sixteen-day composite time series of the different indexes were finally derived from the daily data using the maximum value composite technique to simulate the 16-day dataset routinely produced from MODIS NDVI and EVI and MERIS MTCI acquisitions. The 16-day composite VI time series were then smoothed with a cubic smoothing spline to downscale from the compositing period to daily VI values (Bradley et al., 2007). We will refer to this VI time series as resampled VIs hereafter in this paper.

2.5 Testing of different RS models to estimate GPP

Four groups of models with an increasing data requirement and complexity (i.e. number of model parameters) were tested to estimate GPP:

- i. model 1, direct linear relationship between GPP and a VI related to canopy greenness (VI_g)

$$GPP = aVI_g + b; \quad (4)$$

- ii. model 2, direct linear relationship between GPP and the product of a VI_g and PAR

$$GPP = a(VI_g \times PAR) + b; \quad (5)$$

- iii. model 3, LUE model assuming constant ε and $fAPAR$ estimated as a linear function of a VI_g

$$GPP = \varepsilon \times (aVI_g + b) \times PAR. \quad (6)$$

Finally, to overcome the limitation of a constant ε , a fourth set of models in which ε is estimated as a linear function of PRI was tested:

- iv. model 4, assuming ε and $fAPAR$ estimated as a linear function of PRI and VI_g , respectively

$$\begin{aligned} GPP &= \varepsilon \times fAPAR \times PAR \\ &= (a_0PRI + b_0) \times (aVI_g + b) \times PAR \end{aligned} \quad (7)$$

Furthermore, the widely used LUE model MOD17 (Heinsch et al., 2006), which is the algorithm used for the MODIS GPP product, was also included in the model comparison. MOD17 is driven by meteorological variables (minimum air temperature (T_{min}) and vapour pressure deficit (VPD)), PAR and $fAPAR$. In this study, $fAPAR$ was estimated as a linear function of VI_g , so the resulting model formulation is

$$GPP = \varepsilon_{max} \times (aVI_g + b) \times PAR \times f(VPD) \times f(T_{min}) \quad (8)$$

where ε_{max} was the maximum radiation-use efficiency ($g\ C\ MJ^{-1}$); $f(VPD)$ and $f(T_{min})$ varied linearly between 0 and 1 as a consequence of suboptimal temperatures and water availability for photosynthesis. We used site measurements of PAR, VPD and T_{min} to feed the MOD17 algorithm. To take into account the nonlinear relationship between GPP and the incident PAR (Gilmanov et al., 2007), the inclusion of the logarithm of PAR ($\ln(PAR)$) instead of PAR in model formulations was also tested. Models 1 to 4 were tested using both the measured and resampled VI time series and midday average or daily value of the measured meteorological variables. The performances of MOD17 were evaluated using measured and resampled VI time series and daily meteorological variables.

2.6 Statistical analysis

Pearson's correlation analysis was used to test the significance of relationships of VIs and biochemical and structural field data. Model coefficients were derived by fitting each model against both GPP_m and GPP_d for each day where HSI data were available and for the resampled VI time series. Model coefficients and their relative standard errors were estimated using the Gauss-Newton nonlinear least square optimization method (Bates and Watts, 1988), implemented in the R standard package (R, version 2.6.2, R Development Core Team, 2011). The main fitting (determination coefficient r^2 and root mean square error RMSE) and cross-validated statistics (r_{cv}^2 and $RMSE_{cv}$) obtained with the k -fold cross-validation procedure were computed to compare performances of different groups of models. The k -fold

Table 1. Spectral vegetation indexes investigated in this study: normalized difference vegetation index, NDVI; enhanced vegetation index, EVI; MERIS terrestrial chlorophyll index, MTCI; photochemical reflectance index, PRI. R is the reflectance at the specified wavelength (nm). FWHM is full width at half maximum in nm.

Index	Formulation	Reference	Band center (FWHM) (nm)	Sensor
NDVI	$(R_{858.5} - R_{645}) / (R_{858.5} + R_{645})$	Rouse et al. (1974)	858.5 (35); 645 (50)	MODIS
MTCI	$(R_{753.75} - R_{708.75}) / (R_{708.75} - R_{681.25})$	Dash and Curran (2004)	753.75 (7.5); 708.75 (10); 681.25 (7.5)	MERIS
EVI	$2[R_{858.5} - R_{645}] / [1 + R_{858.5} + 6R_{645} - 7.5R_{469}]$	Huete et al. (2002)	858.5 (35); 645 (50); 469 (20)	MODIS
PRI ₅₅₁	$(R_{531} - R_{551}) / (R_{531} + R_{551})$	Gamon et al. (1992)	531 (10); 551 (10)	MODIS
PRI ₅₅₅	$(R_{531} - R_{555}) / (R_{531} + R_{555})$	Gamon et al. (1992)	531 (10); 555 (20)	MODIS
PRI ₆₄₅	$(R_{531} - R_{645}) / (R_{531} + R_{645})$	Gamon et al. (1992)	531 (10); 645 (50)	MODIS
PRI ₆₆₇	$(R_{531} - R_{667}) / (R_{531} + R_{667})$	Gamon et al. (1992)	531 (10); 667 (10)	MODIS

cross-validation approach (Hastie et al., 2001) divides the data into k subsets, then the model is fitted using $(k - 1)$ subsets as the training set and the validation is conducted using the omitted subset. In this study, the k subsets were defined by partitioning the dataset into 10 ordinal subsets of equal length (each subset corresponds to 1-month data). This approach is more restrictive than the random definition of the k subsets and was chosen to assess the model performances when large gaps occurred in the data time series (Richardson et al., 2006). Finally, the Akaike information criterion (AIC, Akaike, 1973) was adopted to compare performances of the various model formulations.

3 Results

3.1 Seasonal variation of meteorological and biophysical variables

During the snow-free period (DOY 146–306 and DOY 143–303 in 2009 and 2010, respectively), the average midday PAR was 1390 and 1305 $\mu\text{mol m}^{-2} \text{s}^{-1}$ in 2009 and 2010, respectively, having maximum values of about 2050 $\mu\text{mol m}^{-2} \text{s}^{-1}$ (Fig. 2a).

For the same period, the average midday air temperature was 19.2 and 19.7 °C in 2009 and 2010, respectively (Fig. 2b). The total amount of precipitation (Fig. 2c) during the snow-free period markedly differed in the two years: 172 mm in 2009 and 362 mm in 2010. The precipitation amount recorded in 2010 was similar to the long-term average (400 mm, 1927–2001) in the same area (Mercuri and Berro, 2003), while 2009 was particularly dry. SWC was strongly related to precipitation inputs during the growing season. As a consequence, the average seasonal SWC in 2010 was higher (24.6 $\text{mm}^3 \text{mm}^{-3}$) than in 2009 (15.0 $\text{mm}^3 \text{mm}^{-3}$). In particular, in 2010 there was a precipitation event exceeding 65 mm (DOY 226) that considerably affected SWC.

LAI increased from May and reached its annual maximum in mid-July in both years (Fig. 3a). The maximum LAI in 2009 was 2.7 $\text{m}^2 \text{m}^{-2}$ (DOY 194), slightly lower than the 3 $\text{m}^2 \text{m}^{-2}$ in 2010 (DOY 201). LAI decreased earlier and

steeper in 2010 than in autumn 2009. The variation of leaf chlorophyll content during the growing season was measured only in 2010 (Fig. 3b). The first available sampling was on DOY 176, when the chlorophyll content was already high. It peaked at around DOY 201, as did LAI, and after that it started to decrease. The seasonal pattern of IPAR_m (Fig. 3c) showed an increasing trend at the beginning of the growing season: it reached a maximum in about early August and then remained quite stable, with a slightly decreasing course. Therefore, IPAR_m failed to detect the reduction of PAR absorbed by the canopy and thus used for CO_2 fixation at the end of the growing season when the canopy was dominated by yellow and dead material. This trend was instead captured by $(\text{IPAR}_g)_m$ (Fig. 3d). Both IPAR_m and $(\text{IPAR}_g)_m$ were also characterised by considerable day-to-day oscillations due to variations in the ratio of direct to diffuse radiation.

3.2 Seasonal variability of spectral data

HSI was operated for 130 days in 2009 (9 June–17 October) and 148 days in 2010 (20 May–15 October). A total of 7331 spectra were collected in the time window used in the present study. Of these, 32.5 % was not considered in the following analyses since they did not fulfil the data quality criteria. Most data were rejected due to instable meteorological conditions, typical of the study site, while only a small percentage was rejected due to instrument failures.

Figure 4 shows the daily time series of midday VIs computed from HSI data.

In both years, measurements started about two weeks after snow melting when the grassland was already greening. As the growing season proceeded, all the VIs except PRI₅₅₅ and PRI₅₅₁ increased as a result of green biomass accumulation, reaching maximum values in July (around DOY 190) at the same time as maximum LAI and $(\text{IPAR}_g)_m$. Then, in the senescent phase of the grassland (from August on), indexes decreased due to plant yellowing and wilting. The patterns of MTCI resembled that of NDVI but, due to the higher sensitivity of MTCI to chlorophyll content with respect to NDVI (Dash and Curran, 2004), it started to decrease earlier and showed year-to-year variability. The EVI dynamics, as

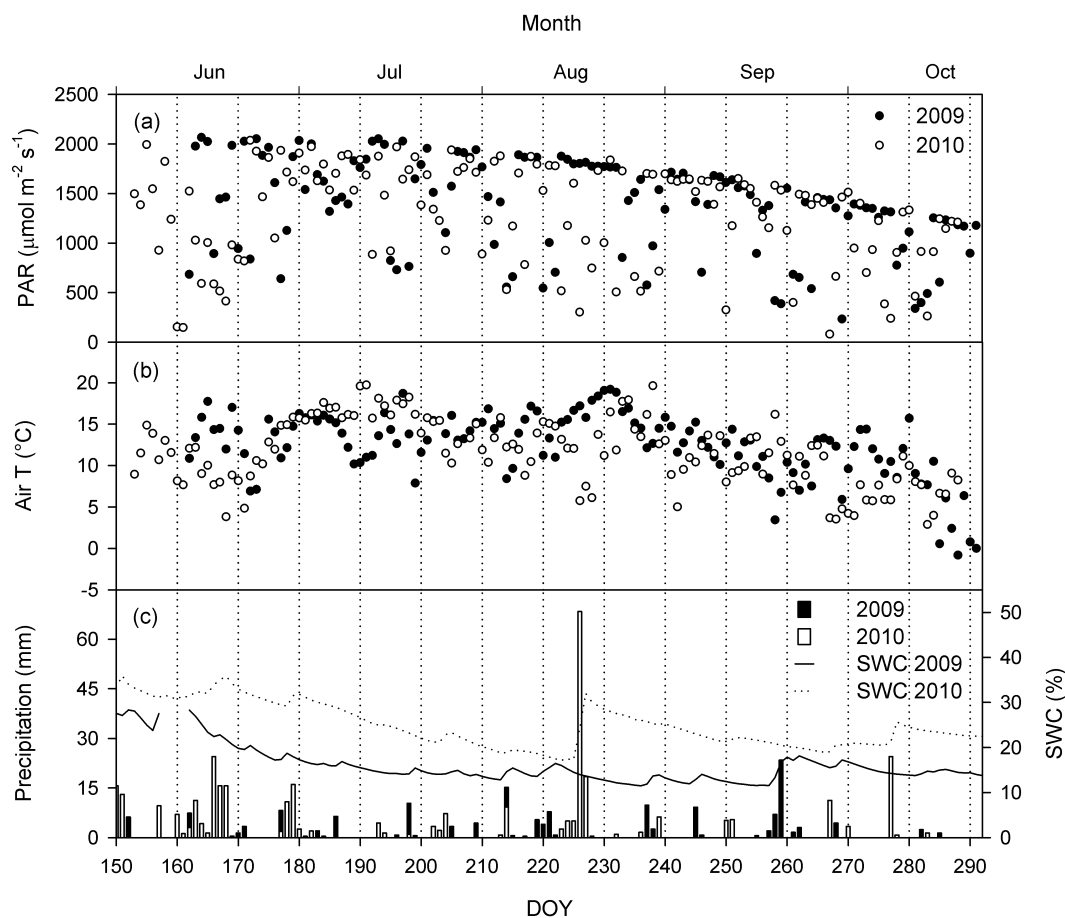


Fig. 2. Seasonal variation of 2009 (solid line, black bars) and 2010 (dotted line, white bars): (a) midday average air temperature (Air T , °C); (b) PAR ($\mu\text{mol m}^{-2} \text{s}^{-1}$); (c) precipitation (mm) and soil water content (SWC, %) at 10 cm.

compared with other VIs, showed a higher scatter, in particular for high EVI values. This result confirmed a previous study by Miura et al. (2000) that demonstrated that EVI uncertainties tended to increase with increasing VI values and attributed this uncertainty to the inclusion of the blue band in VI formulation for EVI values above 0.4 (between DOY 180 and 225 in our study). PRI_{645} and PRI_{667} exhibited a pattern similar to other VIs, while PRI_{555} and PRI_{551} showed an opposite trend characterised by a progressive decrease at the beginning of the growing season up to maximum canopy development and a slower increase in the senescent phase. The most notable differences between the two years analysed were observed in the seasonal dynamics of MTCI and $\text{PRI}_{645/677}$ between DOY 220 and 250.

3.3 Retrieval of biochemical, biophysical and ecophysiological variables from HSI data

The higher sensitivity of MTCI to chlorophyll content was confirmed by the correlation analysis. Chlorophyll was best correlated to MTCI ($r=0.91$, $p<0.001$) and two PRI indexes using red reference bands (PRI_{645} , PRI_{667}) ($r=0.86$

and 0.84 , respectively, $p<0.001$). NDVI provided a lower correlation ($r=0.80$, $p<0.01$) whereas the relationship for EVI was not significant (Table 2). NDVI was the VI that related best to LAI ($r=0.90$, $p<0.001$) and $f\text{IPAR}_g$ ($r=0.95$, $p<0.001$). LUE_g was best explained by PRI_{551} obtained with MODIS band 4 ($r=0.64$, $p<0.001$); similar results were obtained for PRI_{555} with MODIS band 12. Therefore, LUE_g was best correlated to PRI indexes based on green reference bands (551, 555 nm), providing results about 20% better than those obtained using the PRI indexes based on red reference bands (645, 667 nm).

3.4 Comparison of VIs and micrometeorological measurements

The comparison between seasonal variations of VIs and variables derived from EC measurements (Fig. 5) showed that the temporal behaviour of VIs related to canopy chlorophyll content (i.e. MTCI, Fig. 4) tracked GPP_m quite well (Fig. 5a).

In 2010, both MTCI and GPP_m tracked a rebound around DOY 240, probably caused by a rain pulse that occurred on DOY 226 (Fig. 2c). Seasonal courses of PRI_{667} and PRI_{645}

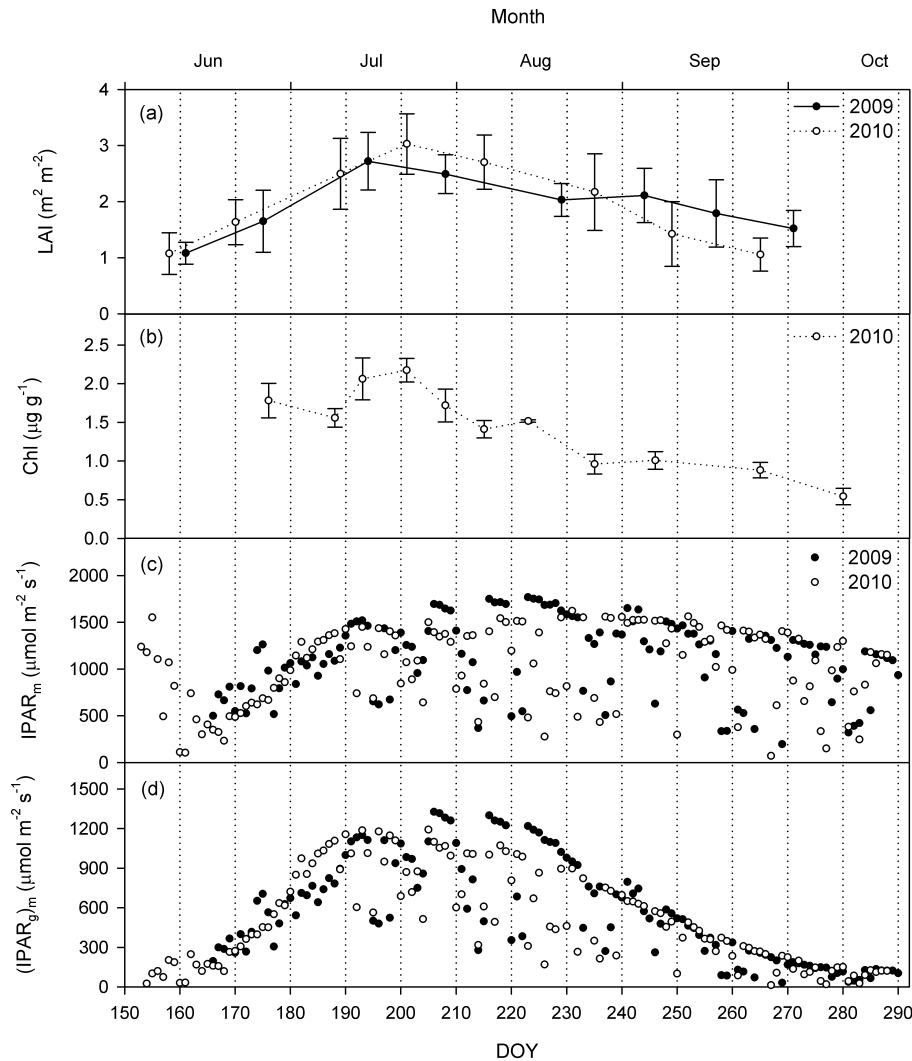


Fig. 3. Seasonal variation of 2009 (filled circles, solid line) and 2010 (open circles, dotted line): (a) leaf area index (LAI, $\text{m}^2 \text{m}^{-2}$, mean \pm SD, $n = 12$); (b) leaf chlorophyll concentration (Chl, $\mu\text{g g}^{-1}$, mean \pm SD, $n = 12$); (c) midday IPAR (IPAR_m , $\mu\text{mol m}^{-2} \text{s}^{-1}$); and (d) midday green IPAR ($(\text{IPAR}_g)_m$, $\mu\text{mol m}^{-2} \text{s}^{-1}$). SD is standard deviation.

Table 2. Coefficients of correlation (r) between the HSI VIs and ancillary and eddy data (LUE_g) measured at the study site. n is the number of samples for each correlation analysis. The VI best-correlated with each variable is in bold print; the second most correlated is in italic.

Index	LAI ($\text{m}^2 \text{m}^{-2}$) ($n = 16$)	Chl ($\mu\text{g g}^{-1}$) ($n = 11$)	$f\text{IPAR}_g$ (-) ($n = 162$)	LUE_g ($\mu\text{mol CO}_2$ μmol^{-1} photon) ($n = 162$)
NDVI	0.90***	0.80**	0.95***	-0.55***
MTCI	0.79***	0.91***	0.81***	-0.30***
EVI	0.78***	n.s.	0.82***	-0.37***
PRI_{645}	0.83***	<i>0.86***</i>	0.86***	-0.39***
PRI_{555}	-0.73***	n.s.	-0.71***	<i>0.63***</i>
PRI_{551}	-0.84***	n.s.	-0.86***	0.64***
PRI_{667}	<i>0.86***</i>	0.84***	<i>0.89***</i>	-0.42***

The asterisk indicates significance of correlation: *** $p < 0.001$; ** $p < 0.01$; * $p < 0.05$; n.s.: not significant (Pearson's correlation test).

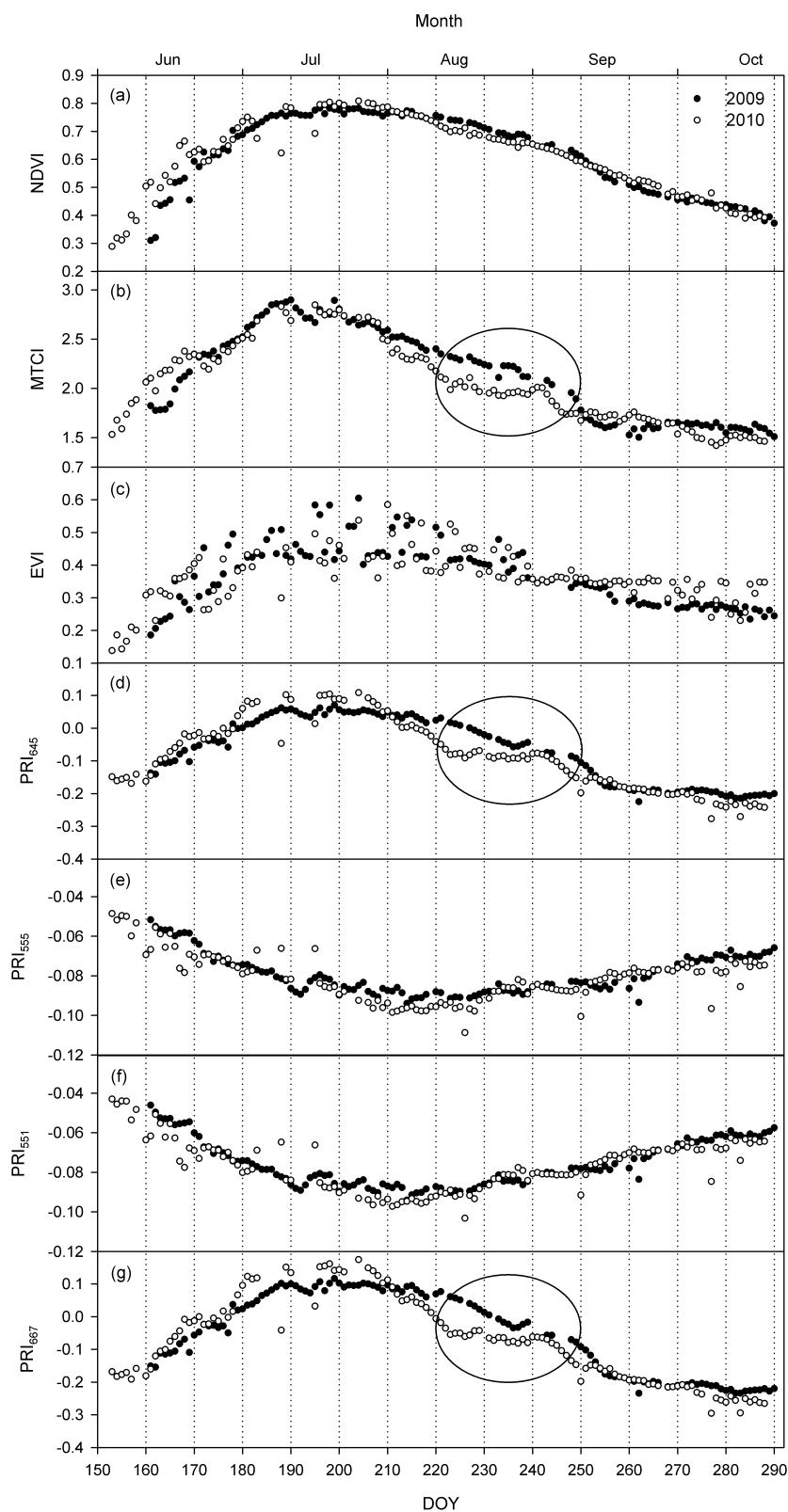


Fig. 4. Seasonal temporal profiles of measured vegetation indexes in 2009 (filled circles) and 2010 (open circles): (a) NDVI; (b) MTCI; (c) EVI; (d) PRI_{645} ; (e) PRI_{555} ; (f) PRI_{551} ; and (g) PRI_{667} . Each point indicates the average value between 11:00 and 13:00 (local solar time). Ovals highlight periods showing clear annual differences.

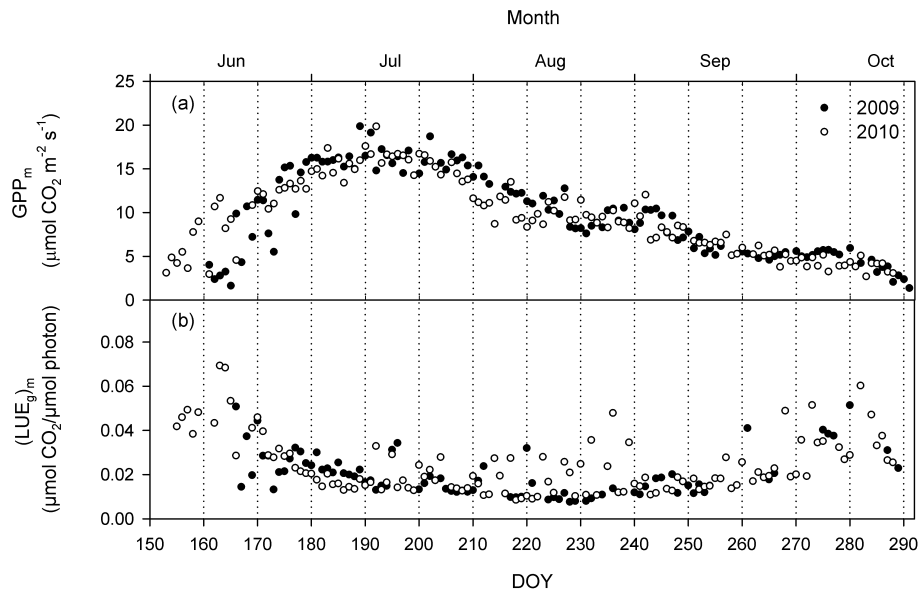


Fig. 5. Seasonal variation of midday carbon variables in 2009 (filled circles) and 2010 (open circles): **(a)** gross primary production (GPP_m , $\mu\text{mol CO}_2 \text{ m}^{-2} \text{ s}^{-1}$) and **(b)** green LUE ($(LUE_g)_m$, $\mu\text{mol CO}_2 \mu\text{mol}^{-1} \text{ photon}$).

were more similar to those of MTCI than PRI_{555} or PRI_{551} . Although PRI_{667} and PRI_{645} were supposed to be a proxy for $(LUE_g)_m$, the correlation analysis confirmed that in this study they were instead correlated most with leaf chlorophyll content and $fPAR_g$. The different concavity of PRI_{555} or PRI_{551} compared to PRI_{667} or PRI_{645} can be explained by the different position of the reference bands on the grassland spectra (Fig. 1). Bands 4 and 12 (551 and 555 nm band center wavelength, respectively) fell on the peak of vegetation reflectance in the green region, while bands 1 and 13 (645 and 667 nm, respectively) were in the chlorophyll absorption well in the red region of the spectrum. Thus, bands 4 and 12 always had a higher value than band 11 (531 nm) during the growing season. On the contrary, bands 1 and 13 were much higher than band 11 at the beginning and end of the growing season, while they had similar values during maximum canopy development (July and August).

$(LUE_g)_m$ (Fig. 5b) showed high values at the beginning of the growing season, with a maximum around DOY 165, corresponding to a LAI of $1.5 \text{ m}^2 \text{ m}^{-2}$ in both 2009 and 2010, and then it suddenly started to decrease. In both years, $(LUE_g)_m$ exhibited indistinct seasonality from around DOY 190 to 250, but day-to-day fluctuation, especially on cloudy and partly cloudy days (Fig. 2b) and in correspondence of sharp meteorological events. As an example, the 68 mm precipitation event that occurred on DOY 226 in 2010 caused a sudden increase in SWC and appeared to stimulate $(LUE_g)_m$, which started to increase and reached a value of $0.048 \mu\text{mol CO}_2 \mu\text{mol}^{-1} \text{ photon}$ on DOY 236. From DOY 250 on, $(LUE_g)_m$ started to increase probably due to the reduction of the incoming PAR (Fig. 2b). Finally, $(LUE_g)_m$

dropped after DOY 280, when the canopy was composed almost entirely of yellow and dead material. A similar seasonal course was observed for both PRI_{555} and PRI_{551} , thus suggesting that these PRI formulations were the best suited to track $(LUE_g)_m$ in this ecosystem. Better performances of these reference bands confirmed previous studies by Middleton et al. (2009) on a Douglas-fir forest and Goerner et al. (2011) on non-boreal/savanna sites. This result supports the hypothesis that the suitability of different reference wavelengths may depend on species composition and stand structure (Gamon et al., 1992; Goerner et al., 2011).

3.5 Evaluation of different RS models to estimate GPP

3.5.1 Measured time series

The summary statistics in fitting and cross-validation of the different models tested for GPP estimation are shown in Tables 3 and 4.

Results of model 1 (simple regression analysis) showed that midday VIs explained most of the variability in both GPP_m and GPP_d : MTCI was the best predictor with a $RMSE_{cv}$ of $1.50 \mu\text{mol CO}_2 \text{ m}^{-2} \text{ s}^{-1}$ and $0.74 \text{ g C m}^{-2} \text{ d}^{-1}$, respectively, followed by NDVI and EVI. The inclusion of incident PAR as a multiplicative term of VI_g in model formulation (model 2) decreased model performances in GPP_m estimation up to a $RMSE_{cv}$ of almost double relative to the corresponding model 1. As an example, $RMSE_{cv}$ of the model using MTCI increased from 1.50 up to $3.30 \mu\text{mol CO}_2 \text{ m}^{-2} \text{ s}^{-1}$ and AIC increased from 157 to 417. Similar results were obtained on including the PAR in the form of model 3 for both GPP_m and GPP_d estimation. Thus,

Table 3. Summary of statistics in fitting (r^2 and RMSE) and cross-validation (r_{cv}^2 , $RMSE_{cv}$ and AIC) of different models tested in this study using average GPP_m and PAR_m data. The best-performing models in each class are in bold print. The most successful of all models is grey highlighted.

Midday statistical summary							
Model	RS data	Meteo data	r^2	r_{cv}^2	RMSE	$RMSE_{cv}$	AIC
			–	–	$\mu\text{mol CO}_2 \text{ m}^{-2} \text{ s}^{-1}$	$\text{m}^{-2} \text{ s}^{-1}$	–
1	MTCI	–	0.89	0.88	1.47	1.50	157
	NDVI	–	0.71	0.62	2.40	2.72	354
	EVI	–	0.44	0.31	3.32	3.68	454
2	MTCI	PAR_m	0.52	0.45	3.06	3.30	417
	NDVI	PAR_m	0.45	0.34	3.28	3.58	445
	EVI	PAR_m	0.46	0.36	3.26	3.55	442
	MTCI	$\ln(PAR_m)$	0.88	0.88	1.53	1.56	169
	NDVI	$\ln(PAR_m)$	0.71	0.64	2.37	2.64	344
	EVI	$\ln(PAR_m)$	0.54	0.43	2.99	3.35	423
3	MTCI	PAR_m	0.55	0.54	2.98	2.99	385
	NDVI	PAR_m	0.42	0.35	3.38	3.56	443
	EVI	PAR_m	0.49	0.36	3.18	3.53	440
	MTCI	$\ln(PAR_m)$	0.90	0.89	1.42	1.44	143
	NDVI	$\ln(PAR_m)$	0.72	0.64	2.34	2.66	347
	EVI	$\ln(PAR_m)$	0.52	0.40	3.06	3.42	430
4	MTCI, PRI_{555}	PAR_m	0.56	0.55	2.93	2.98	384
	NDVI, PRI_{555}	PAR_m	0.54	0.39	3.01	3.46	433
	EVI, PRI_{555}	PAR_m	0.63	0.47	2.68	3.21	408
	MTCI, PRI_{555}	$\ln(PAR_m)$	0.90	0.90	1.39	1.42	138
	NDVI, PRI_{555}	$\ln(PAR_m)$	0.87	0.81	1.61	1.94	242
	EVI, PRI_{555}	$\ln(PAR_m)$	0.56	0.38	2.94	3.48	436
	MTCI, PRI_{551}	PAR_m	0.56	0.54	2.95	3.01	387
	NDVI, PRI_{551}	PAR_m	0.54	0.36	3.00	3.53	440
	EVI, PRI_{551}	PAR_m	0.57	0.45	2.90	3.29	417
	MTCI, PRI_{551}	$\ln(PAR_m)$	0.90	0.89	1.40	1.44	143
	NDVI, PRI_{551}	$\ln(PAR_m)$	0.87	0.78	1.61	2.06	261
EVI, PRI_{551}	$\ln(PAR_m)$	0.53	0.11	3.04	4.18	496	

in the majority of cases, the direct use of PAR did not appear to be a useful model component in estimating GPP. On the contrary, results obtained with model 2 and 3 including the logarithm of the incident PAR in the model showed an improvement of the performances in both GPP_m and GPP_d estimation. The extent of the improvement changed with the different indexes considered.

The inclusion of PRI to estimate ε generally increased model performances, in particular when it was used in combination with MTCI and $\ln(PAR)$. Model 4 using MTCI, PRI_{555} and $\ln(PAR_m)$ showed the best performances in estimating GPP_m with a $RMSE_{cv}$ of $1.42 \mu\text{mol CO}_2 \text{ m}^{-2} \text{ s}^{-1}$. It is interesting to note that this model also showed the lowest AIC, despite the increase in the number of model variables with respect to model 1. The best-performing model in estimating GPP_d was instead model 2 with $\ln(PAR_d)$ and MTCI. MOD17, in which ε was expressed as constant ε at its potential maximum adjusted for unfavourable T_{min} and

VPD, showed a $RMSE_{cv}$ between $0.78 \text{ g C m}^{-2} \text{ d}^{-1}$ for the model driven by MTCI and $\ln(PAR_d)$ and $1.57 \text{ g C m}^{-2} \text{ d}^{-1}$ for the model driven by EVI and $\ln(PAR_d)$. These results were slightly poorer than those obtained on estimating ε as a function of PRI, and, due to the higher complexity of this model, it had a higher AIC.

3.5.2 Resampled time series

Results obtained on performing the same analysis on data aggregated at the 16-day time scale and then downscaled to a daily time step (Tables 5 and 6) confirmed overall those obtained by feeding models with data measured at a daily step. MTCI was the best estimator of $fAPAR$ in models 1, 2 and 3 for both GPP_m (Table 5) and GPP_d (Table 6) estimation. As before, $\ln(PAR)$ performed better than linear PAR in models 2, 3 and 4, and the improvement was higher for GPP_m estimation. Regarding MOD17, the use

Table 4. Summary of statistics in fitting (r^2 and RMSE) and cross-validation (r_{cv}^2 , RMSE_{cv} and AIC) of different models tested in this study using GPP_d and PAR_d data. The best-performing models in each class are in bold print. The most successful of all models is grey highlighted.

Daily statistical summary							
Model	RS data	Meteo data	r^2	r_{cv}^2	RMSE	RMSE _{cv}	AIC
			–	–	g C m ⁻² d ⁻¹		–
1	MTCI	–	0.88	0.88	0.72	0.74	–121
	NDVI	–	0.67	0.59	1.21	1.34	157
	EVI	–	0.43	0.31	1.58	1.75	281
2	MTCI	PAR _d	0.71	0.69	1.12	1.17	95
	NDVI	PAR _d	0.67	0.62	1.21	1.30	144
	EVI	PAR _d	0.70	0.65	1.14	1.24	121
	MTCI	ln(PAR_d)	0.92	0.91	0.61	0.62	–199
	NDVI	ln(PAR _d)	0.73	0.67	1.08	1.21	108
	EVI	ln(PAR _d)	0.54	0.45	1.42	1.56	229
3	MTCI	PAR _d	0.78	0.78	0.98	0.99	17
	NDVI	PAR _d	0.69	0.65	1.17	1.24	122
	EVI	PAR _d	0.73	0.67	1.10	1.22	112
	MTCI	ln(PAR_d)	0.90	0.90	0.65	0.66	–170
	NDVI	ln(PAR _d)	0.71	0.64	1.13	1.26	130
	EVI	ln(PAR _d)	0.51	0.40	1.47	1.63	249
4	MTCI, PRI ₅₅₅	PAR _d	0.79	0.78	0.95	0.99	18
	NDVI, PRI ₅₅₅	PAR _d	0.78	0.76	0.98	1.03	36
	EVI, PRI ₅₅₅	PAR _d	0.80	0.75	0.94	1.04	41
	MTCI, PRI₅₅₅	ln(PAR_d)	0.91	0.90	0.64	0.67	–163
	NDVI, PRI ₅₅₅	ln(PAR _d)	0.88	0.86	0.72	0.79	–90
	EVI, PRI ₅₅₅	ln(PAR _d)	0.56	0.45	1.39	1.56	227
	MTCI, PRI ₅₅₁	PAR _d	0.79	0.78	0.96	1.00	19
	NDVI, PRI ₅₅₁	PAR _d	0.78	0.76	0.98	1.03	34
	EVI, PRI ₅₅₁	PAR _d	0.77	0.70	1.02	1.16	88
	MTCI, PRI₅₅₁	ln(PAR_d)	0.91	0.90	0.64	0.68	–162
	NDVI, PRI ₅₅₁	ln(PAR _d)	0.88	0.86	0.72	0.79	–88
EVI, PRI ₅₅₁	ln(PAR _d)	0.51	0.33	1.47	1.72	273	
MOD17	MTCI	PAR _d , T _{min} , VPD	0.82	0.78	0.89	0.99	15
	NDVI	PAR _d , T _{min} , VPD	0.72	0.66	1.12	1.22	115
	EVI	PAR _d , T _{min} , VPD	0.74	0.62	1.07	1.29	141
	MTCI	ln(PAR_d), T_{min}, VPD	0.90	0.86	0.66	0.78	–95
	NDVI	ln(PAR _d), T _{min} , VPD	0.61	0.58	1.31	1.36	164
	EVI	ln(PAR _d), T _{min} , VPD	0.55	0.44	1.41	1.57	231

of ln(PAR) instead of PAR increased the performances in GPP estimation only when it was used in combination with MTCI. The best-performing model in estimating resampled GPP_m was model 3 driven by MTCI and ln(PAR_m), while model 2, driven by MTCI and ln(PAR_d), performed better in GPP_d estimation.

To obtain an overall view of the capability of different models to represent the seasonal time courses of GPP, we compared EC daily observations (EC-GPP_d) and daily model outputs obtained with the best-performing model for each class fed with both measured and resampled daily inputs (RS-based estimation of GPP, RS-GPP) (Fig. 6). Both measured and resampled daily RS-GPP values agreed quite

well with EC-GPP_d concerning both amplitude and seasonal phase and successfully described the seasonal dynamics captured by tower fluxes. As noticeable in Fig. 6, the limitation behind the use of resampled rather than measured daily inputs to model seasonal GPP trends was their inability to model GPP day-to-day variations. Even though the statistics in fitting (r^2 and RMSE) and cross-validation (r_{cv}^2 , RMSE_{cv} and AIC) of different models fed with resampled VIs were in most cases better than their daily counterpart (Tables 3 and 4), these models had poorer performances in predicting the sums of daily GPP related to the two growing seasons. Figure 7 shows the sums of daily GPP estimated using the best-performing model for each class. On days for

Table 5. Summary of statistics in fitting (r^2 and RMSE) and cross-validation (r_{cv}^2 , RMSE_{cv} and AIC) of different models tested in this study using average GPP_m and PAR_m data and resampled VI time series. The best-performing models in each class are in bold print. The most successful of all models is grey highlighted.

Resampled midday statistical summary							
Model	RS data	Meteo data	r^2	r_{cv}^2	RMSE	RMSE _{cv}	AIC
			–	–	$\mu\text{mol CO}_2 \text{ m}^{-2} \text{ s}^{-1}$		–
1	MTCI	–	0.87	0.86	1.53	1.60	166
	NDVI	–	0.72	0.64	2.24	2.55	312
	EVI	–	0.62	0.49	2.63	3.04	366
2	MTCI	PAR _m	0.47	0.37	3.11	3.39	400
	NDVI	PAR _m	0.37	0.23	3.38	3.73	430
	EVI	PAR _m	0.41	0.29	3.26	3.60	418
	MTCI	ln(PAR_m)	0.85	0.84	1.63	1.70	187
	NDVI	ln(PAR _m)	0.71	0.64	2.29	2.55	312
	EVI	ln(PAR _m)	0.64	0.53	2.54	2.91	353
3	MTCI	PAR _m	0.47	0.45	3.11	3.15	377
	NDVI	PAR _m	0.36	0.30	3.40	3.56	415
	EVI	PAR _m	0.32	0.24	3.51	3.70	427
	MTCI	ln(PAR_m)	0.88	0.87	1.50	1.56	159
	NDVI	ln(PAR _m)	0.74	0.66	2.19	2.49	305
	EVI	ln(PAR _m)	0.64	0.53	2.54	2.93	355
4	MTCI, PRI ₅₅₅	PAR _m	0.47	0.43	3.11	3.21	383
	NDVI, PRI ₅₅₅	PAR _m	0.41	0.27	3.28	3.63	421
	EVI, PRI ₅₅₅	PAR _m	0.44	0.23	3.19	3.74	431
	MTCI, PRI₅₅₅	ln(PAR_m)	0.88	0.86	1.48	1.62	171
	NDVI, PRI ₅₅₅	ln(PAR _m)	0.78	0.65	1.99	2.52	307
	EVI, PRI ₅₅₅	ln(PAR _m)	0.79	0.35	1.97	3.43	404
	MTCI, PRI ₅₅₁	PAR _m	0.47	0.43	3.10	3.21	383
	NDVI, PRI ₅₅₁	PAR _m	0.41	0.29	3.27	3.59	417
	EVI, PRI ₅₅₁	PAR _m	0.42	0.23	3.25	3.73	430
	MTCI, PRI₅₅₁	ln(PAR_m)	0.88	0.85	1.49	1.63	173
	NDVI, PRI ₅₅₁	ln(PAR _m)	0.78	0.68	2.01	2.42	296
	EVI, PRI ₅₅₁	ln(PAR _m)	0.75	0.40	2.13	3.30	391

which both spectral and eddy data were available (i.e. 130 and 148 days in 2009 and 2010, excluding a few instrumental gaps), the sums of daily GPP for the analysed periods calculated from EC-GPP_d were 473.8 and 421.2 g C m⁻² in 2009 and 2010, respectively. The use of RS data to estimate total GPP made it possible to obtain good estimates with both measured and resampled daily inputs. However, absolute average errors in GPP estimation using daily inputs ranged from 0.5 to 1.2 % with models 2 and 1, respectively, and from 1.8 to 2.8 % with models 3 and 1 respectively using resampled data inputs. MOD17 fed by both RS and meteorological inputs produced an average error of 2.4 % in GPP estimation using daily inputs and 1.8 % using resampled data inputs. In general, in 2009 RS-GPP_{res} tended to underestimate the EC-GPP_d. This was caused by the inability of RS-GPP_{res} to track the peak of EC-GPP_d occurring between DOY 180 and 210 and the recovery of EC-GPP_d at the end of the growing season (DOY 260–290). On the contrary, in 2010, RS-GPP_{res}

tended to overestimate the EC-GPP_d, especially at the end of the growing season.

4 Discussion

Unattended high temporal and spectral resolution canopy spectra coupled with EC data were acquired for two consecutive years on a subalpine grassland to exploit different strategies for evaluating the potential of RS in estimating carbon uptake. Collected data were processed using automatic procedures which took into account a series of quality criteria related to the illumination conditions during the acquisition and the system performances, and reliable time series of VIs, providing useful information on the time course of different grassland variables, have been obtained. In particular, MTCI was the index most related to chlorophyll content and NDVI to $fIPAR_g$ and LAI, confirming previous studies on different ecosystems (Dash and Curran, 2004; Huemmrich et al.,

Table 6. Summary of statistics in fitting (r^2 and RMSE) and cross-validation (r_{cv}^2 , $RMSE_{cv}$ and AIC) of different models tested in this study using GPP_d and PAR_d data and resampled VI time series. The best-performing models in each class are in bold print. The most successful of all models is grey highlighted.

Resampled daily statistical summary							
Model	RS data	Meteo data	r^2	r_{cv}^2	RMSE	$RMSE_{cv}$	AIC
			–	–	$g\ C\ m^{-2}\ d^{-1}$		–
1	MTCI	–	0.89	0.88	0.69	0.72	–120
	NDVI	–	0.72	0.63	1.10	1.25	117
	EVI	–	0.69	0.60	1.15	1.31	137
2	MTCI	PAR_d	0.73	0.70	1.08	1.13	75
	NDVI	PAR_d	0.64	0.59	1.23	1.32	141
	EVI	PAR_d	0.67	0.62	1.18	1.27	125
	MTCI	$\ln(PAR_d)$	0.92	0.91	0.58	0.61	–191
	NDVI	$\ln(PAR_d)$	0.77	0.70	0.98	1.13	72
	EVI	$\ln(PAR_d)$	0.74	0.67	1.04	1.19	95
3	MTCI	PAR_d	0.77	0.77	0.98	0.99	16
	NDVI	PAR_d	0.69	0.65	1.15	1.22	108
	EVI	PAR_d	0.66	0.62	1.19	1.28	126
	MTCI	$\ln(PAR_d)$	0.91	0.90	0.61	0.64	–170
	NDVI	$\ln(PAR_d)$	0.75	0.68	1.02	1.17	89
	EVI	$\ln(PAR_d)$	0.72	0.64	1.08	1.23	111
4	MTCI, PRI ₅₅₅	PAR_d	0.77	0.77	0.98	1.00	20
	NDVI, PRI ₅₅₅	PAR_d	0.73	0.66	1.08	1.19	98
	EVI, PRI ₅₅₅	PAR_d	0.74	0.71	1.04	1.10	63
	MTCI, PRI₅₅₅	$\ln(PAR_d)$	0.91	0.88	0.61	0.71	–124
	NDVI, PRI ₅₅₅	$\ln(PAR_d)$	0.81	0.62	0.89	1.27	123
	EVI, PRI ₅₅₅	$\ln(PAR_d)$	0.84	0.75	0.82	1.02	31
	MTCI, PRI ₅₅₁	PAR_d	0.77	0.77	0.98	0.99	18
	NDVI, PRI ₅₅₁	PAR_d	0.72	0.66	1.08	1.21	102
	EVI, PRI ₅₅₁	PAR_d	0.73	0.68	1.07	1.16	85
	MTCI, PRI₅₅₁	$\ln(PAR_d)$	0.91	0.89	0.61	0.68	–144
	NDVI, PRI ₅₅₁	$\ln(PAR_d)$	0.81	0.64	0.90	1.24	114
	EVI, PRI ₅₅₁	$\ln(PAR_d)$	0.81	0.69	0.89	1.14	79
	MOD17	MTCI	PAR_d, T_{min}, VPD	0.80	0.73	0.93	1.07
NDVI		PAR_d, T_{min}, VPD	0.70	0.63	1.13	1.26	120
EVI		PAR_d, T_{min}, VPD	0.71	0.62	1.11	1.27	126
MTCI		$\ln(PAR_d), T_{min}, VPD$	0.90	0.83	0.66	0.83	–45
NDVI		$\ln(PAR_d), T_{min}, VPD$	0.60	0.54	1.31	1.40	165
EVI		$\ln(PAR_d), T_{min}, VPD$	0.58	0.54	1.33	1.40	165

2010; Panigada et al., 2010). PRI indexes based on green reference bands (555 and 551 nm) were instead the indexes most related to LUE_g (Table 2). To our knowledge, this is the first study showing the potential of PRI to estimate ε expressed in terms of LUE_g , representing a more physiologically realistic way of quantifying the PAR effectively used for photosynthesis compared to ε more widely computed as $GPP/APAR$ or $GPP/incident\ PAR$ (see the recent review by Garbulsky et al. (2011)). It is worth noting that, as opposed to $PRI_{555/551}$, PRI computed using a reference band positioned in proximity of the chlorophyll absorption well (645 and 667 nm) was more related to leaf chlorophyll concentration than LUE_g

(Table 2). Therefore, the choice of the reference band used to compute PRI appears to play a key role in the determination of the sensitivity of this index to photosynthetic efficiency. This result confirmed recent studies by Middleton et al. (2009) and Goerner et al. (2011), although we believe that further studies are needed to explore the best reference band for estimating PRI across vegetation types and temporal scales. Furthermore, the translation of these findings to more complex ecosystems (e.g. forests) is not trivial due to the effects of canopy structure on the relationship between PRI and LUE (Barton and North, 2001; Hilker et al., 2008a; Cheng et al., 2010, 2011).

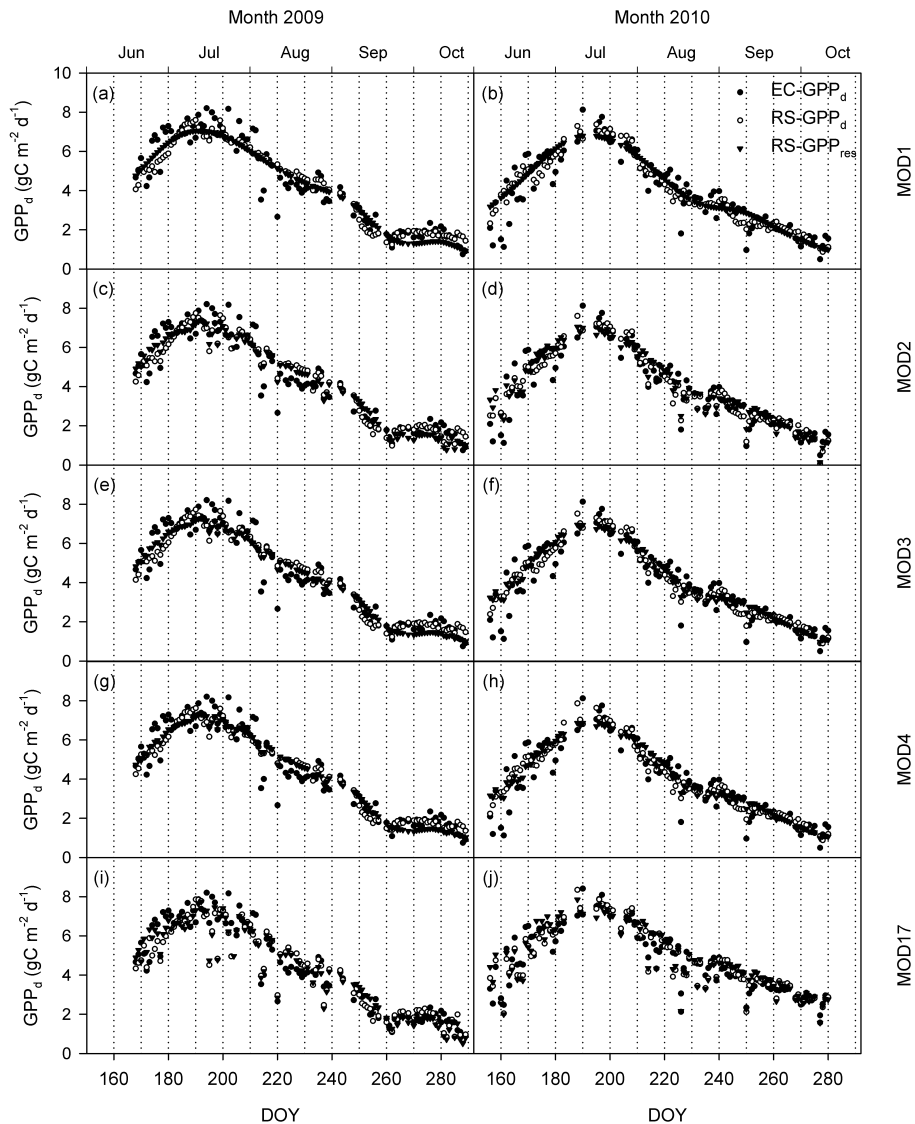


Fig. 6. Time courses of GPP_d ($g C m^{-2} d^{-1}$) estimated from EC measurements ($EC-GPP_d$) (filled circles), GPP_d modelled (open circles) with models fed with measured daily inputs ($RS-GPP_d$) and GPP_d modelled (filled triangles) with models fed with resampled daily inputs ($RS-GPP_{res}$) in 2009 (left panels) and 2010 (right panels) for the best performing formulation of each class of models: (a and b) model 1 parameterized with MTCI; (c and d) model 2 parameterized with MTCI and $\ln(PAR)$; (e and f) model 3 parameterized with MTCI and $\ln(PAR)$; (g and h) model 4 parameterized with MTCI, PRI_{555} and $\ln(PAR)$; and (i and j) MOD17 parameterized with MTCI and $\ln(PAR)$.

Most VIs peaked in the first half of July, in correspondence to maximum canopy development, attested by maximum values of LAI and GPP (Figs. 3, 4 and 5). However, due to the different sensitivity of VIs to grassland variables, their minimum and maximum values occurred at different DOYs and their slope changed in time. For example, PRI_{555} and PRI_{551} had a less distinct seasonal course and they reached minimum values about 10–20 days after full canopy development. This time-lag observed between the peak of $PRI_{555/551}$ and indexes using red bands can be explained by considering selective light absorption by photosynthetic pigments. Chlorophyll controls the energy flux that

can be transferred to the dark reaction of photosynthesis and, because of the lower chlorophyll absorption of green light (Terashima et al., 2009), indexes based on green wavebands may therefore reach their peak later in the season compared to indexes involving a strong chlorophyll absorption band in the red spectral region.

The analysis conducted with LUE models indicated that GPP can be successfully modelled using RS indexes or combining RS indexes with meteorological data. Results of model 1 confirmed that VIs related to canopy greenness, and specifically to chlorophyll content, explained most of the variability in GPP in an ecosystem characterised by a strong

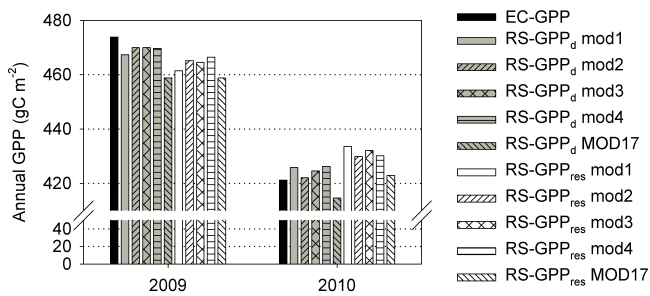


Fig. 7. Cumulated GPP_d ($gC\ m^{-2}$) estimated from EC measurements, modelled with daily measured and resampled inputs in 2009 (left bars) and 2010 (right bars).

seasonality in green-up and senescence such as grasslands and crops (Gitelson et al., 2006; Wu et al., 2009; Peng et al., 2011). MTCI was the best predictor for both GPP_m and GPP_d , confirming its better performances with respect to EVI in estimating GPP in grassland ecosystems (Harris and Dash, 2010). However, as highlighted by Gitelson et al. (2008), this kind of model is not able to describe variations in GPP due to short-term (hours to days) variations of illumination or environmental stresses (such as temperature and water availability). This limitation was overcome by exploiting models 2 and 3, which take into account variations related to changing incident irradiance. Somewhat surprisingly, the inclusion of incident PAR in model formulation did not result in improved estimation of GPP. However, using $\ln(PAR)$ instead of PAR in model parameterization, the accuracy of GPP estimation improved. This means that the grassland increases its efficiency at low values of incident PAR, while, given its moderate LAI and erectophile leaf angle distribution, it is not able to fully exploit high radiation loads. This higher efficiency at low PAR can probably result from more diffuse light scattered within the canopy and less photoinhibition on the top of the canopy, which lead to a reduced tendency toward saturation (Chen et al., 2009). Furthermore, in our case, low PAR conditions can probably be associated with precipitation events, associated with high SWC and low temperatures, which are known to stimulate photosynthetic efficiency in alpine plants (Billings and Mooney, 1968; Korner and Diemer, 1987; Polley et al., 2011).

To account for stress-induced changes in photosynthetic efficiency, the PRI was also tested to directly infer ϵ from RS data. The inclusion of PRI in model formulation showed slight improvement in GPP estimation, in particular for GPP_m . Physiologically, this means that in our ecosystem, $APAR_g$ is coupled with ϵ , and the inclusion of the ϵ term in the model slightly improves its ability to track seasonal variations. Similar results were obtained by Rossini et al. (2010) and Gitelson et al. (2006) in other ecosystems characterised by strong seasonal variability (crops). Modelling ϵ as a function of meteorological conditions generally results in lower accuracy in GPP estimation (Table 4).

To evaluate the effect of the temporal resolution of VI time series on GPP estimation, 16-day composite time series of MODIS- (i.e. NDVI, EVI and PRI) and MERIS-derived (MTCI) products were then simulated and downscaled to daily frequency and results were compared. Short-term variability (hours to days) in both VIs and flux data is dampened out by averaging data over two weeks, thus leading to good performances when fitting GPP against resampled VIs (Tables 5 and 6). However, when these models are used to simulate annual GPP, they inevitably provide a decrease in the accuracy of total GPP estimation. The results from models driven only by RS and PAR variables were as good as, and in many cases better than, the more complex MOD17 GPP model, which requires meteorological and vegetation type data inputs in addition to RS indexes. As with several previous studies on VIs, since the estimation of model coefficients is based on a semiempirical regression technique and is conducted only for a single site, further verification studies should be conducted under other vegetation and climatic conditions and at different sites potentially characterised by a more complex structure to fully explore the efficacy of this method and make general inferences.

This study provides a conceptual background for GPP estimation using real satellite data and a better understanding of the spatio-temporal variations of productivity. The choice of the index depends on the spectral characteristics of the satellite sensor being used. In particular, MTCI can be derived from satellite systems with spectral bands in the red edge region (MERIS in this study), EVI and NDVI from satellites having blue, red and near-infrared bands (MODIS in this study) and PRI from satellites with a narrow green band centered at 531 nm (MODIS in this study). Our results show that red edge indexes like MTCI can be used both as single variables or in combination with PRI and meteorological variables to obtain accurate estimations of GPP in a grassland ecosystem. Unfortunately, the computation of MTCI and PRI from a single satellite is currently only feasible from the NASA Earth Exploring One (EO-1) Hyperion sensor, which is near the end of its lifetime with 12 yr in orbit (launched November 2000). The launching of new image spectrometers, such as the NASA HypIRI or the DLR EnMAP, will allow the calculation of a greater number of indexes, including MTCI and PRI, thus offering significant potential to enhance the accuracy of the assessment of CO_2 uptake in terrestrial ecosystems from space. Finally, we remark that NDVI and EVI showed poorer performances when used as single variables to predict GPP and it is preferable to use these indexes in combination with PRI and meteorological variables to improve accuracy in GPP modelling.

5 Conclusions

This study investigated the potential of automatic continuous near-surface spectral measurements to monitor the seasonal

development of a grassland ecosystem and to evaluate different strategies for terrestrial ecosystem GPP estimation. The main outcomes of this research can be summarized as follows:

- continuous field spectroscopy measurements provided reliable information on the seasonal variations of vegetation biophysical and ecophysiological variables with daily temporal resolution. The correlation analysis between VIs and different canopy variables suggested the possibility of using NDVI as an indicator for LAI and $fIPAR_g$ ($r = 0.90$ and 0.95 , respectively), the MTCI for leaf chlorophyll content ($r = 0.91$) and the PRI_{551} for LUE_g ($r = 0.64$);
- the spectral vegetation index MTCI, designed to be more sensitive to chlorophyll content, explained most of the variability in GPP in the ecosystem investigated, which was characterised by a strong seasonal dynamic of green-up and senescence;
- accuracy in GPP estimation improved when taking into account high frequency modulations of GPP driven by incident PAR (in the form of $\ln(PAR)$) or modelling LUE_g with the PRI in model formulation; the model formulation that gave the best results in GPP estimation was based on $fAPAR_g$ (estimated as a function of MTCI) and ε (as a function of PRI_{551});
- results from models driven only by PAR and RS indexes were in many cases better than those obtained from the MOD17 model, which requires meteorological and vegetation type data inputs in addition to RS indexes;
- the use of VIs obtained as 16-day composite time series, simulating the 16-day dataset produced from satellite acquisitions, and then downscaled from the compositing period to daily scale rather than measured daily input data, decreased the accuracy of the total GPP estimation on the annual basis.

The approach proposed in this study finds application within the framework of the established SpecNet (Gamon et al., 2010) and recent activities related to the EuroSpec COST action which propose to collect spectral data continuously, regularly and from a worldwide network in connection with the well-established network of flux towers (FLUXNET). Furthermore, improvements in operational LUE algorithms for monitoring global GPP are desirable in the context of efforts to understand trends in global carbon uptake.

Acknowledgements. This study was supported by the PhenoALP project, an Interreg project co-funded by the European Regional Development Fund, under the operational program for territorial cooperation Italy-France (ALCOTRA) 2007–2013. The authors acknowledge Sara D’Alessandro, Michele Lonati, Giovanni Pavia, Martina Petey, Paolo Pogliotti and Emily Solly for their support

during field campaigns. The authors would like to thank E. M. Middleton and the two anonymous reviewers of this manuscript for their valuable comments which have helped us to improve the overall quality of the paper.

Edited by: R. Conant

References

- Akaike, H.: Information theory and an extension of the maximum likelihood principle, in: Proceedings of the Second International Symposium on Information Theory, edited by: Petrov, B. N. and Csaki, F., Akademiai Kiado, Budapest, 267–281 (Reproduced in: Breakthroughs in Statistics, edited by: Kotz, S. and Johnson, N. L., 2003), Vol. I, Foundations and Basic Theory, Springer-Verlag, New York, 610–624, 1973.
- Aubinet, M., Grelle, A., Ibrom, A., Rannik, U., Moncrieff, J., Foken, T., Kowalski, A. S., Martin, P. H., Berbigier, P., Bernhofer, C., Clement, R., Elbers, J., Granier, A., Grunwald, T., Morgenstern, K., Pilegaard, K., Rebmann, C., Snijders, W., Valentini, R., and Vesala, T.: Estimates of the annual net carbon and water exchange of forests: the EUROFLUX methodology, *Adv. Ecol. Res.*, 30, 113–175, 2000.
- Baldocchi, D., Valentini, R., Running, S., Oechel, W., and Dahlman, R.: Strategies for measuring and modelling carbon dioxide and water vapour fluxes over terrestrial ecosystems, *Glob. Change Biol.*, 2, 159–168, 1996.
- Balzarolo, M., Anderson, K., Nichol, C., Rossini, M., Vescovo, L., Arriga, N., Wohlfahrt, G., Calvet, J.-C., Carrara, A., Cerasoli, S., Cogliati, S., Daumard, F., Eklundh, L., Elbers, J. A., Evrendilek, F., Handcock, R. N., Kaduk, J., Klumpp, K., Longdoz, B., Matteucci, G., Meroni, M., Montagnani, L., Ourcival, J.-M., Sanchez-Canete, E. P., Pontailler, J.-Y., Juszczak, R., Scholes, B., and Pilar Martin, M.: Ground-based optical measurements at European flux sites: a review of methods, instruments and current controversies, *Sensors*, 11, 7954–7981, 2011.
- Barton, C. V. M. and North, P. R. J.: Remote sensing of canopy light use efficiency using the photochemical reflectance index – Model and sensitivity analysis, *Remote Sens. Environ.*, 78, 264–273, 2001.
- Bates, D. M. and Watts, D. G.: Nonlinear Regression Analysis and its Applications, John Wiley and Sons, New York, 365 pp., 1988.
- Billings, W. D. and Mooney, H. A.: The ecology of arctic and alpine plants, *Biol. Rev.*, 43, 481–529, doi:10.1111/j.1469-185X.1968.tb00968.x, 1968.
- Bradley, B. A., Jacob, R. W., Hermance, J. F., and Mustard, J. F.: A curve fitting procedure to derive inter-annual phenologies from time series of noisy satellite NDVI data, *Remote Sens. Environ.*, 106, 137–145, 2007.
- Busetto, L., Meroni, M., Crosta, G. F., Guanter, L., and Colombo, R.: SpecCal: Novel software for in-field spectral characterization of high-resolution spectrometers, *Comput. Geosci.*, 37, 1685–1691, 2011.
- Chen, J., Shen, M., and Kato, T.: Diurnal and seasonal variations in light-use efficiency in an alpine meadow ecosystem: causes and implications for remote sensing, *J. Plant Ecol.-UK*, 2, 173–185, 2009.
- Cheng, Y. B., Middleton, E. M., Hilker, T., Coops, N. C., Black, T. A., and Krishnan, P.: Dynamics of spectral

- bio-indicators and their correlations with light use efficiency using directional observations at a Douglas-fir forest, *Meas. Sci. Technol.*, 20, 095107, doi:10.1088/0957-0233/20/9/095107, 2009.
- Cheng, Y. B., Middleton, E. M., Huemmrich, K. F., Zhang, T., Campbell, P., Corp, L., Russ, A., and Kustas, T.: Utilizing in situ directional hyperspectral measurements to validate bio-indicator simulations for a corn crop canopy, *Ecol. Inform.*, 5, 330–338, 2010.
- Cheng, Y. B., Middleton, E. M., Huemmrich, K. F., Zhang, T., Corp, L., Campbell, P., and Kustas, T.: Spectral Bio-indicator simulations for tracking photosynthetic activities in a corn field, *SPIE Remote Sensing and Modeling of Ecosystems for Sustainability VIII Conference*, 2011.
- Coops, N. C., Hilker, T., Hall, F. G., Nichol, C. J., and Drolet, G. G.: Estimation of light-use efficiency of terrestrial ecosystem from space: a status report, *Bioscience*, 60, 788–797, 2010.
- Damm, A., Elbers, J., Erler, A., Gioli, B., Hamdi, K., Hutjes, R., Kosvancova, M., Meroni, M., Miglietta, F., Moersch, A., Moreno, J., Schickling, A., Sonnenschein, R., Udelhoven, T., van der Linden, S., Hostert, P., and Rascher, U.: Remote sensing of sun induced fluorescence to improve modelling of diurnal courses of Gross Primary Production (GPP), *Glob. Change Biol.*, 16, 171–186, 2010.
- Dash, J. and Curran, P. J.: The MERIS terrestrial chlorophyll index, *Int. J. Remote Sens.*, 25, 5403–5413, 2004.
- Daumard, F., Champagne, S., Fournier, A., Goulas, Y., Ounis, A., Hanocq, J.-F., and Moya, I.: A field platform for continuous measurement of canopy fluorescence, *IEEE T. Geosci. Remote*, 48, 3358–3368, 2010.
- Drolet, G. G., Huemmrich, K. F., Hall, F. G., Middleton, E. M., Black, T. A., Barr, A. G., and Margolis, H. A.: A MODIS-derived photochemical reflectance index to detect inter-annual variations in the photosynthetic light-use efficiency of a boreal deciduous forest, *Remote Sens. Environ.*, 98, 212–224, 2005.
- Drolet, G. G., Middleton, E. M., Huemmrich, K. F., Hall, F. G., Amiro, B. D., Barr, A. G., Black, T. A., McCaughey, J. H., and Margolis, H. A.: Regional mapping of gross light-use efficiency using MODIS spectral indices, *Remote Sens. Environ.*, 112, 3064–3078, 2008.
- Evain, S., Flexas, J., and Moya, I.: A new instrument for passive remote sensing: 2. Measurement of leaf and canopy reflectance changes at 531 nm and their relationship with photosynthesis and chlorophyll fluorescence, *Remote Sens. Environ.*, 91, 175–185, 2004.
- Frankenberg, C., Fisher, J. B., Worden, J., Badgley, G., Saatchi, S. S., Lee, J.-E., Toon, G. C., Butz, A., Jung, M., Kuze, A., and Yokota, T.: New global observations of the terrestrial carbon cycle from GOSAT: patterns of plant fluorescence with gross primary productivity, *Geophys. Res. Lett.*, 38, L17706, doi:10.1029/2011gl048738, 2011.
- Gamon, J. A., Field, C. B., Bilger, W., Bjorkman, O., Fredeen, A. L., and Penueles, J.: Remote-sensing of the xanthophyll cycle and chlorophyll fluorescence in sunflower leaves and canopies, *Oecologia*, 85, 1–7, 1990.
- Gamon, J. A., Penueles, J., and Field, C. B.: A narrow-waveband spectral index that tracks diurnal changes in photosynthetic efficiency, *Remote Sens. Environ.*, 41, 35–44, 1992.
- Gamon, J. A., Rahman, A. F., Dungan, J. L., Schildhauer, M., and Huemmrich, K. F.: Spectral Network (SpecNet) – what is it and why do we need it?, *Remote Sens. Environ.*, 103, 227–235, 2006.
- Gamon, J. A., Coburn, C., Flanagan, L. B., Huemmrich, K. F., Kiddle, C., Sanchez-Azofeifa, G. A., Thayer, D. R., Vescovo, L., Gianelle, D., Sims, D. A., Rahman, A. F., and Pastorello, G. Z.: SpecNet revisited: bridging flux and remote sensing communities, *Can. J. Remote Sens.*, 36, S376–S390, 2010.
- Garbulsky, M. F., Penueles, J., Gamon, J., Inoue, Y., and Filella, I.: The photochemical reflectance index (PRI) and the remote sensing of leaf, canopy and ecosystem radiation use efficiencies – a review and meta-analysis, *Remote Sens. Environ.*, 115, 281–297, 2011.
- Gilmanov, T. G., Soussana, J. E., Aires, L., Allard, V., Ammann, C., Balzarolo, M., Barcza, Z., Bernhofer, C., Campbell, C. L., Cernusca, A., Cescatti, A., Clifton-Brown, J., Dirks, B. O. M., Dore, S., Eugster, W., Fuhrer, J., Gimeno, C., Gruenwald, T., Haszpra, L., Hensen, A., Ibrom, A., Jacobs, A. F. G., Jones, M. B., Lanigan, G., Laurila, T., Lohila, A., Manca, G., Marcolla, B., Nagy, Z., Pilegaard, K., Pinter, K., Pio, C., Raschi, A., Rogiers, N., Sanz, M. J., Stefani, P., Sutton, M., Tuba, Z., Valentini, R., Williams, M. L., and Wohlfahrt, G.: Partitioning European grassland net ecosystem CO₂ exchange into gross primary productivity and ecosystem respiration using light response function analysis, *Agr. Ecosyst. Environ.*, 121, 93–120, 2007.
- Gitelson, A. A., Vina, A., Verma, S. B., Rundquist, D. C., Arkebauer, T. J., Keydan, G., Leavitt, B., Ciganda, V., Burba, G. G., and Suyker, A. E.: Relationship between gross primary production and chlorophyll content in crops: implications for the synoptic monitoring of vegetation productivity, *J. Geophys. Res.-Atmos.*, 111, D08S11, doi:10.1029/2005JD006017, 2006.
- Gitelson, A. A., Vina, A., Masek, J. G., Verma, S. B., and Suyker, A. E.: Synoptic monitoring of gross primary productivity of maize using Landsat data, *IEEE Geosci. Remote S.*, 5, 133–137, 2008.
- Goerner, A., Reichstein, M., Tomelleri, E., Hanan, N., Rambal, S., Papale, D., Dragoni, D., and Schullius, C.: Remote sensing of ecosystem light use efficiency with MODIS-based PRI, *Biogeosciences*, 8, 189–202, doi:10.5194/bg-8-189-2011, 2011.
- Hall, F. G., Huemmrich, K. F., Goetz, S. J., Sellers, P. J., and Nickerson, J. E.: Satellite remote sensing of surface-energy balance – success, failures, and unresolved issues in FIFE, *J. Geophys. Res.-Atmos.*, 97, 19061–19089, 1992.
- Harris, A. and Dash, J.: The potential of the MERIS Terrestrial Chlorophyll Index for carbon flux estimation, *Remote Sens. Environ.*, 114, 1856–1862, 2010.
- Hastie, T., Tibshirani, R., and Friedman, J.: *The Elements of Statistical Learning: Data Mining, Inference and Prediction*, Springer, New York, 552 pp., 2001.
- Heinsch, F. A., Zhao, M. S., Running, S. W., Kimball, J. S., Nemani, R. R., Davis, K. J., Bolstad, P. V., Cook, B. D., Desai, A. R., Ricciuto, D. M., Law, B. E., Oechel, W. C., Kwon, H., Luo, H. Y., Wofsy, S. C., Dunn, A. L., Munger, J. W., Baldocchi, D. D., Xu, L. K., Hollinger, D. Y., Richardson, A. D., Stoy, P. C., Siqueira, M. B. S., Monson, R. K., Burns, S. P., and Flanagan, L. B.: Evaluation of remote sensing based terrestrial productivity from MODIS using regional tower eddy flux network observations, *IEEE T. Geosci. Remote*, 44, 1908–1925, 2006.

- Hilker, T., Coops, N. C., Nestic, Z., Wulder, M. A., and Black, A. T.: Instrumentation and approach for unattended year round tower based measurements of spectral reflectance, *Comput. Electron. Agr.*, 56, 72–84, 2007.
- Hilker, T., Coops, N. C., Hall, F. G., Black, T. A., Wulder, M. A., Nestic, Z., and Krishnan, P.: Separating physiologically and directionally induced changes in PRI using BRDF models, *Remote Sens. Environ.*, 112, 2777–2788, 2008a.
- Hilker, T., Coops, N. C., Wulder, M. A., Black, T. A., and Guy, R. D.: The use of remote sensing in light use efficiency based models of gross primary production: A review of current status and future requirements, *Sci. Total Environ.*, 404, 411–423, 2008b.
- Hilker, T., Nestic, Z., Coops, N. C., and Lessard, D.: A new, automated, multiangular radiometer instrument for tower-based observations of canopy reflectance (AMSPEC II), *Instrum. Sci. Technol.*, 38, 319–340, 2010.
- Huemmrich, K. F., Gamon, J. A., Tweedie, C. E., Oberbauer, S. F., Kinoshita, G., Houston, S., Kuchy, A., Hollister, R. D., Kwon, H., Mano, M., Harazono, Y., Webber, P. J., and Oechel, W. C.: Remote sensing of tundra gross ecosystem productivity and light use efficiency under varying temperature and moisture conditions, *Remote Sens. Environ.*, 114, 481–489, 2010.
- Huete, A., Didan, K., Miura, T., Rodriguez, E. P., Gao, X., and Ferreira, L. G.: Overview of the radiometric and biophysical performance of the MODIS vegetation indices, *Remote Sens. Environ.*, 83, 195–213, 2002.
- Ide, R., Nakaji, T., and Oguma, H.: Assessment of canopy photosynthetic capacity and estimation of GPP by using spectral vegetation indices and the light-response function in a larch forest, *Agr. Forest Meteorol.*, 150, 389–398, 2010.
- Inoue, Y., Penuelas, J., Miyata, A., and Mano, M.: Normalized difference spectral indices for estimating photosynthetic efficiency and capacity at a canopy scale derived from hyperspectral and CO₂ flux measurements in rice, *Remote Sens. Environ.*, 112, 156–172, 2008.
- Joiner, J., Yoshida, Y., Vasilkov, A. P., Yoshida, Y., Corp, L. A., and Middleton, E. M.: First observations of global and seasonal terrestrial chlorophyll fluorescence from space, *Biogeosciences*, 8, 637–651, doi:10.5194/bg-8-637-2011, 2011.
- Korner, C. and Diemer, M.: In situ photosynthetic responses to light, temperature and carbon dioxide in herbaceous plants from low and high altitude, *Funct. Ecol.*, 1, 179–194, 1987.
- Leuning, R., Hughes, D., Daniel, P., Coops, N. C., and Newnham, G.: A multi-angle spectrometer for automatic measurement of plant canopy reflectance spectra, *Remote Sens. Environ.*, 103, 236–245, 2006.
- Li, Z. Q., Yu, G. R., Xiao, X. M., Li, Y. N., Zhao, X. Q., Ren, C. Y., Zhang, L. M., and Fu, Y. L.: Modeling gross primary production of alpine ecosystems in the Tibetan Plateau using MODIS images and climate data, *Remote Sens. Environ.*, 107, 510–519, 2007.
- Mercalli, L. and Berro, D. C.: *Atlante climatico della Valle d'Aosta*, Società meteorologica subalpina, 2003.
- Meroni, M. and Colombo, R.: 3S: A novel program for field spectroscopy, *Comput. Geosci.*, 35, 1491–1496, 2009.
- Meroni, M., Picchi, V., Rossini, M., Cogliati, S., Panigada, C., Nali, C., Lorenzini, G., and Colombo, R.: Leaf level early assessment of ozone injuries by passive fluorescence and photochemical reflectance index, *Int. J. Remote Sens.*, 29, 5409–5422, 2008a.
- Meroni, M., Rossini, M., Picchi, V., Panigada, C., Cogliati, S., Nali, C., and Colombo, R.: Assessing steady-state fluorescence and PRI from hyperspectral proximal sensing as early indicators of plant stress: the case of ozone exposure, *Sensors*, 8, 1740–1754, 2008b.
- Meroni, M., Rossini, M., Guanter, L., Alonso, L., Rascher, U., Colombo, R., and Moreno, J.: Remote sensing of solar induced chlorophyll fluorescence: review of methods and applications, *Remote Sens. Environ.*, 113, 2037–2051, 2009.
- Meroni, M., Busetto, L., Guanter, L., Cogliati, S., Crosta, G. F., Migliavacca, M., Panigada, C., Rossini, M., and Colombo, R.: Characterization of fine resolution field spectrometers using solar Fraunhofer lines and atmospheric absorption features, *Appl. Opt.*, 49, 2858–2871, 2010.
- Meroni, M., Barducci, A., Cogliati, S., Castagnoli, F., Rossini, M., Busetto, L., Migliavacca, M., Cremonese, E., Galvagno, M., Colombo, R., and di Cella, U. M.: The hyperspectral irradiometer, a new instrument for long-term and unattended field spectroscopy measurements, *Rev. Sci. Instrum.*, 82, 043106, doi:10.1063/1.3574360, 2011.
- Middleton, E. M., Cheng, Y. B., Hilker, T., Black, T. A., Krishnan, P., Coops, N. C., and Huemmrich, K. F.: Linking foliage spectral responses to canopy-level ecosystem photosynthetic light-use efficiency at a Douglas-fir forest in Canada, *Can. J. Remote Sens.*, 35, 166–188, 2009.
- Middleton, E. M., Huemmrich, K. F., Cheng, Y. B., and Margolis, H. A.: Spectral Bioindicators of Photosynthetic Efficiency and Vegetation Stress, in: *Hyperspectral Remote Sensing of Vegetation*, edited by: Thenkabail, P. S., Lyon, J. G., and Huete, A. R., CRC Press, 265–288, 2011.
- Migliavacca, M., Galvagno, M., Cremonese, E., Rossini, M., Meroni, M., Sonnentag, O., Cogliati, S., Manca, G., Diotri, F., Busetto, L., Cescatti, A., Colombo, R., Fava, F., di Celia, U. M., Pari, E., Siniscalco, C., and Richardson, A. D.: Using digital repeat photography and eddy covariance data to model grassland phenology and photosynthetic CO₂ uptake, *Agr. Forest Meteorol.*, 151, 1325–1337, doi:10.1016/j.agrformet.2011.05.012, 2011.
- Miura, T., Huete, A. R., and Yoshioka, H.: Evaluation of sensor calibration uncertainties on vegetation indices for MODIS, *IEEE T. Geosci. Remote*, 38, 1399–1409, doi:10.1109/36.843034, 2000.
- Monteith, J. L.: Solar radiation and productivity in tropical ecosystems, *J. Appl. Ecol.*, 9, 747–766, 1972.
- Monteith, J. L.: Climate and efficiency of crop production in Britain, *Philos. T. Roy. Soc. B*, 281, 271–294, 1977.
- Nakaji, T., Ide, R., Oguma, H., Saigusa, N., and Fujinuma, Y.: Utility of spectral vegetation index for estimation of gross CO₂ flux under varied sky conditions, *Remote Sens. Environ.*, 109, 274–284, 2007.
- Nakaji, T., Ide, R., Takagi, K., Kosugi, Y., Ohkubo, S., Nishihara, K. N., Saigusa, N., and Oguma, H.: Utility of spectral vegetation indices for estimation of light conversion efficiency in coniferous forests in Japan, *Agr. Forest Meteorol.*, 148, 776–787, 2008.
- Nouvellon, Y., Seen, D. L., Rambal, S., Begue, A., Moran, M. S., Kerr, Y., and Qi, J. G.: Time course of radiation use efficiency in a shortgrass ecosystem: Consequences for remotely sensed estimation of primary production, *Remote Sens. Environ.*, 71,

- 43–55, 2000.
- Panigada, C., Rossini, M., Busetto, L., Meroni, M., Fava, F., and Colombo, R.: Chlorophyll concentration mapping with MIVIS data to assess crown discoloration in the Ticino Park oak forest, *Int. J. Remote Sens.*, 31, 12, 3307–3332, 2010.
- Peng, Y., Gitelson, A. A., Keydan, G., Rundquist, D. C., and Moses, W.: Remote estimation of gross primary production in maize and support for a new paradigm based on total crop chlorophyll content, *Remote Sens. Environ.*, 115, 978–989, 2011.
- Penuelas, J., Garbulsky, M. F., and Filella, I.: Photochemical reflectance index (PRI) and remote sensing of plant CO₂ uptake, *New Phytol.*, 191, 596–599, 2011.
- Polley, H. W., Phillips, R. L., Frank, A. B., Bradford, J. A., Sims, P. L., Morgan, J. A., and Kiniry, J. R.: Variability in light-use efficiency for gross primary productivity on great plains grasslands, *Ecosystems*, 14, 15–27, 2011.
- Porra, R. J., Thompson, W. A., and Kriedemann, P. E.: Determination of accurate extinction coefficients and simultaneous equations for assaying chlorophylls a and b extracted with four different solvents: verification of the concentration of chlorophyll standards by atomic absorption spectroscopy, *Biochim. Biophys. Acta*, 975, 384–394, 1989.
- R Development Core Team: R: a Language and Environment for Statistical Computing, R Foundation for Statistical Computing, Vienna, Austria, ISBN 3-900051-07-0, 2011.
- Reichstein, M., Falge, E., Baldocchi, D., Papale, D., Aubinet, M., Berbigier, P., Bernhofer, C., Buchmann, N., Gilmanov, T., Granier, A., Grunwald, T., Havrankova, K., Ilvesniemi, H., Janous, D., Knohl, A., Laurila, T., Lohila, A., Loustau, D., Matteucci, G., Meyers, T., Miglietta, F., Ourcival, J. M., Pumpanen, J., Rambal, S., Rotenberg, E., Sanz, M., Tenhunen, J., Seufert, G., Vaccari, F., Vesala, T., Yakir, D., and Valentini, R.: On the separation of net ecosystem exchange into assimilation and ecosystem respiration: review and improved algorithm, *Glob. Change Biol.*, 11, 1424–1439, 2005.
- Richardson, A. D., Braswell, B. H., Hollinger, D. Y., Burman, P., Davidson, E. A., Evans, R. S., Flanagan, L. B., Munger, J. W., Savage, K., Urbanski, S. P., and Wofsy, S. C.: Comparing simple respiration models for eddy flux and dynamic chamber data, *Agr. Forest Meteorol.*, 141, 219–234, 2006.
- Rossini, M., Meroni, M., Migliavacca, M., Manca, G., Cogliati, S., Busetto, L., Picchi, V., Cescatti, A., Seufert, G., and Colombo, R.: High resolution field spectroscopy measurements for estimating gross ecosystem production in a rice field, *Agr. Forest Meteorol.*, 150, 1283–1296, 2010.
- Rouse, J. W., Haas, R. H., Schell, J. A., Deering, D. W., and Harlan, J. C.: Monitoring the Vernal Advancements and Retro Gradation of Natural Vegetation, Greenbelt, MD, USA, 371, 1974.
- Schaepman-Strub, G., Schaepman, M. E., Painter, T. H., Dangel, S., and Martonchik, J. V.: Reflectance quantities in optical remote sensing—definitions and case studies, *Remote Sens. Environ.*, 103, 27–42, 2006.
- Sellers, P. J., Berry, J. A., Collatz, G. J., Field, C. B., and Hall, F. G.: Canopy reflectance, photosynthesis, and transpiration 3. A re-analysis using improved leaf models and a new canopy integration scheme, *Remote Sens. Environ.*, 42, 187–216, 1992.
- Sims, D. A., Luo, H. Y., Hastings, S., Oechel, W. C., Rahman, A. F., and Gamon, J. A.: Parallel adjustments in vegetation greenness and ecosystem CO₂ exchange in response to drought in a Southern California chaparral ecosystem, *Remote Sens. Environ.*, 103, 289–303, 2006a.
- Sims, D. A., Rahman, A. F., Cordova, V. D., El-Masri, B. Z., Baldocchi, D. D., Flanagan, L. B., Goldstein, A. H., Hollinger, D. Y., Misson, L., Monson, R. K., Oechel, W. C., Schmid, H. P., Wofsy, S. C., and Xu, L.: On the use of MODIS EVI to assess gross primary productivity of North American ecosystems, *J. Geophys. Res.-Biogeo.*, 111, G04015, doi:10.1029/2006jg000162, 2006b.
- Terashima, I., Fujita, T., Inoue, T., Chow, W. S., and Oguchi, R.: Green light drives leaf photosynthesis more efficiently than red light in strong white light: revisiting the enigmatic question of why leaves are green, *Plant Cell Physiol.*, 50, 684–697, doi:10.1093/pcp/pcp034, 2009.
- Veroustraete, F., Sabbe, H., and Eerens, H.: Estimation of carbon mass fluxes over Europe using the C-Fix model and Euroflux data, *Remote Sens. Environ.*, 83, 376–399, 2002.
- Wohlfahrt, G., Pilloni, S., Hörtnagl, L., and Hammerle, A.: Estimating carbon dioxide fluxes from temperate mountain grasslands using broad-band vegetation indices, *Biogeosciences*, 7, 683–694, doi:10.5194/bg-7-683-2010, 2010.
- Wu, C. Y., Niu, Z., Tang, Q., Huang, W. J., Rivard, B., and Feng, J. L.: Remote estimation of gross primary production in wheat using chlorophyll-related vegetation indices, *Agr. Forest Meteorol.*, 149, 1015–1021, 2009.
- Zhang, Q. Y., Middleton, E. M., Margolis, H. A., Drolet, G. G., Barr, A. A., and Black, T. A.: Can a satellite-derived estimate of the fraction of PAR absorbed by chlorophyll (FAPAR(chl)) improve predictions of light-use efficiency and ecosystem photosynthesis for a boreal aspen forest?, *Remote Sens. Environ.*, 113, 880–888, 2009.