

Hyperspherical Few-Body Model Calculation for Cascade Ξ Exotic Hypernuclei with Reference to Nuclear Drip Lines

Md.A. Khan, M. Alam, M. Hasan, S.H. Mondal

Department of Physics, Aliah University,
IIA/27, Newtown, Kolkata-700160, India

Received 11 November 2020

Abstract. In this paper, we presented the ground state energies calculated for some single and double cascade hyperon(Ξ^-) hypernuclei. For hypernuclei of the type ${}_{\Xi}^{A_c+1}X$ we applied $\Xi+_c^A X$ two-body model and for hypernuclei of the type ${}_{\Xi\Xi}^{A_c+2}X$ we adopted $\Xi + \Xi+_c^A X$ three-body model. A two-term Gaussian (Isle type) potential with adjustable parameters is chosen as the Ξ -nucleus interaction, while a two-term Yukawa-type potential has been chosen for the $\Xi\Xi$ pair. In the three-body model calculation, we adopted the hyperspherical harmonics expansion (HHE) formalism. The resulting two- and three-body Schrödinger equations subject to appropriate boundary conditions have been solved numerically to get the ground-state energies and wavefunctions. Computed values are in excellent agreement with the observed ones as found in the literature. Analysis of the calculated observables indicates that the hyperons stay close to the core-nucleus. Hypernuclei formed as a result of absorption of one or more Ξ -hyperon(s) by a normal nucleus (bound or unbound) are found to have more stability than those formed as a result of absorption of one or more Λ hyperon(s) by the same nucleus. This fact flashes towards the possibility of the existence of a valley of strange hypernuclei near the drip lines.

KEY WORDS: Hyperon, Hypernuclei, exotic-nuclei, cascade hyper-nuclei, hyperon-nucleon potential, hyperspherical harmonics.

1 Introduction

Atomic nuclei containing at least one strange hyperon (viz. Λ, Σ, Ξ , etc.) in their constituents are called hypernuclei. Nuclear physics of strange particle is an exciting and vibrant field of research, dealing with the production of multi-strange hypernuclei (sometimes called strangelets) in the laboratory through relativistic heavy-ion collisions. When two heavy ions collide at very high energy,

constituent nucleons of the colliding ions undergo multiple collisions. Each independent nucleon-nucleon collision is capable of producing a strange quark-antiquark pair (i.e., $s\bar{s}$ pair). As the quark structure of proton (uud), neutron (udd), and Ξ^- (dss) are well-established facts, interaction among hyperons and nucleons may give a very good starting point to extract information on strong interactions through investigation of hypernuclei. An interesting type of them is the cascade hypernuclei, which are formed when one or more nucleon(s) of ordinary nuclei are replaced by one or more cascade (eg., Ξ) hyperon(s). Some of the experimentally observed cascade hypernuclei are ${}^8_{\Xi^-}\text{He}$, ${}^{15}_{\Xi^-}\text{C}$, ${}^{17}_{\Xi^-}\text{O}$ etc. The existence of cascade hyperon Ξ^- was first inferred in the works of the Manchester group of scientists – R. Armenmteros, K.H. Barker, C.C. Butler, A. Cachon, and C.M. York in the early fifties [1]. Existence of a neutral component of which was predicted by M. Gell-Mann 1956 [2] based on strangeness theory. The prediction was later confirmed in experiments of the Lawrence Radiation Laboratory group led by L.W. Alvarez 1959 [3]. This particle was also observed at BNL, as an intermediate product of Ω^- decay, during the mid-sixties, [4]. The possibility of the formation of cascade hypernuclei was first reported by Barkas et al. 1959 [5]. Reports on the possible bound states of Ξ -hypernuclei have been published by several authors including Wilkinson et al. 1959 [6], Bechdolf et al. 1968 [7], Catala et al. 1969 [8], and Mondal et al. 1979 [9]. In their 1983 works on the formation of Ξ -hypernuclei, Dover and Gal reported some important pieces of information which can be seen in the literature [10]. Experimental data on some Ξ -nucleus interaction and bound state properties of ${}^{13}_{\Xi}\text{C}$ have been reported by Aoki et al. 1995 [11]. Fukuda et al. 1998 [12] published data on Ξ -nucleus potential based on their scattering and structure investigations. Khaustov et al. 2000 [13] reported the event of production of ${}^{12}_{\Xi}\text{Be}$ hypernuclei and useful data on Ξ -nucleus potential strength. Nakazawa et al. 2015 [14] reported a deeply bound state of the $\Xi^{-14}\text{N}$ hypernuclei having a Ξ - separation energy of 4.38 ± 0.25 MeV. In addition to the above experimental activities, theoretical data on Ξ -hypernuclei obtained from momentum transfer reactions are also reported by Dover 1980 [15], Dover, and Gal 1983 [10]. Shoeb and Khan 1984 [16] published theoretical *ab-initio* data on binding energies of some light Ξ -hypernuclei. Similar theoretical results have also been reported by Lalazissis et al. 1989 [17]. Yamaguchi et al. 2001 [18] used ΞN one boson exchange potential (OBEP) in the G matrix theory approach for studying bound states of $\Xi^{-11}\text{B}$ hypernucleus. Hiyama et al. 2008 [19] performed structure calculation adopting a microscopic few-body cluster model using the Gaussian expansion method. Yamamoto et al. 2010 [20] investigated bound states in some light and heavy Ξ -hypernuclei adopting G-matrix theory. Shyam et al. 2012 [21] used an effective Lagrangian model approach to study cross-sections for the production of Ξ^- -particle hole states and corresponding binding energies of Ξ^- states in ${}^{12}_{\Xi}\text{Be}$, ${}^{28}_{\Xi}\text{Mg}$, etc. Sun et al. 2016 [22] theoretically identified the formation of ${}^{15}_{\Xi}\text{C}$ state during capture of Ξ^- by ${}^{14}\text{N}$ target, using relativistic mean-field (RMF) and Skyrme-Hartree-Fock (SHF) models. Filikhin et al. 2017 [23] have imple-

mented configuration-space Faddeev equation approach to study binding mechanism of three-body systems containing hyperon(s), nucleon(s) and nuclide(s). Very recently Liu et al. 2018 [24] studied the separation energies of hyperon(s) in hypernuclei ${}_{\Xi}^{41}\text{K}$, ${}_{\Xi}^{41}\text{Ca}$ etc. in the relativistic mean-field approach.

Also, hypernuclei exhibit some interesting features—they are self-bound quantum many-body systems embodied of three different types of fermions—proton, neutron, and strange hyperon. Being non-identical fermion, an unpaired hyperon does not suffer from Pauli blocking by the nucleons. As a result, a hyperon can penetrate deep into the nuclear interior and occupy any of the allowed energy orbits, giving rise to a phenomenon known as **glue-like** role of hyperon. Thus hyperons can generate deeply bound hypernuclear states as reported by Hiyama et al. 2015 [25], Liu et al. 2018 [24], and Xia et al. 2019 [26]. Buyukcizmeci et al. 2013 [27] noted that nucleon separation energies in hypernuclei are relatively higher than those in normal nuclei due to coupling between hyperons and nucleons inside the hypernuclei. This interesting phenomenon may provide the scientific community a noble opportunity to investigate the formation and structure of normal exotic nuclei beyond the drip lines. Hyperons may produce some other interesting effects in nuclear systems as an impurity such as shrinkage of nuclear size Hiyama et al. 2010 [28]; hyperon resonance states Ren et al. 2017 [29]; nuclear shape deformation Isaka et al. 2013 [30], Lu et al. 2014 [31]; modification of cluster structure by penetrating deep inside the target nucleus Hagino et al 2013 [32], a shift of neutron drip line towards the neutron-rich side Zhou et al. 2008 [33] and occurrence of the skin or halo structure of the nucleon and hyperon Lu et al. 2003 [34]. These strange nuclei have a lifetime significantly longer than the typical reaction times Danysz and Pniewski 1953 [35], and they can provide an extreme test for the models of nuclear structure, to study the hyperon-nucleon, hyperon-hyperon interactions, and the strange matter properties. Also, the discovery of such strange nuclei has opened an avenue for the study of significant events not only in particle physics but in nuclear-astronomy as well. Hyperons form the main constituent in the core of many stars and appear in the neutron stars when their matter density becomes approximately two times the density of matter in ordinary nuclei. The hyperon-nucleon and hyperon-hyperon interactions have adequate demands to the solution of the equation of state (EoS) describing a neutron star and important to calculate the maximum mass and size of the neutron stars. Also, hyperons provide additional stability and their interactions regulate the cooling behavior of the massive neutron stars Schaffner 2008 [36] and Belyaev et al. 2008 [37].

In the literature we found some scattered theoretical and experimental data on the single Ξ -hypernuclei, such as those by Bando et al. 1990 [38], Feliciello et al. 2015 [39]. However, data on the corresponding double- Ξ hypernuclei are very scarce. This fact insisted us to investigate the possible bound states in the single- and the corresponding double- Ξ hypernuclei using the same set of hyperon-nucleus interaction. The $\Xi\Xi$ interaction is chosen to keep in mind the

prediction of the extended softcore Nijmegen potential model (ESC08c), that no $\Xi\Xi$ bound state to exist, reported by Garcilazo and Valcarce 2016 [40].

This work is motivated by the recent experimental activities worldwide to unveil many interesting properties of this exotic kind of hyperon playing a very crucial role near the nuclear drip line. Here we carry out an *ab-initio* solution of Schrödinger equation to calculate energy and some relevant parameters of single and double Ξ hypernuclei in the framework of few-body (two and three-body) model adopting hyperspherical harmonics expansion method (HHEM). As already discussed, many exotic phenomena occur near the drip line and **formation of bound exotic hyper-nuclei via capture of strange hyperons by unbound or very weakly bound normal nuclei near the drip line** is one of the most interesting events among them. Here we considered hypernuclei of mass number $A = 6$ & 16 assumed to be formed via absorption of two Ξ^- hyperons by ${}^4\text{He}$ and ${}^{14}\text{C}$ respectively. It is known that ${}^5\text{He}$ is unbound and ${}^6\text{He}$ has small two-neutron separation energy (less than 1 MeV). One of the interesting features of ${}^6\text{He}$ is that it is a Borromean halo nucleus because none of the binary subsystems of ${}^6\text{He}$ three-body (${}^4\text{He}+n+n$) system are bound which resembles the Borromean structure of three interlocked rings which separate automatically if any one of the rings is removed. Thus, the existence of the bound state of ${}^6_{\Xi\Xi}\text{He}$ in comparison to the non-existence of ${}^5\text{He}$ bound state or the enhancement in the binding energy of ${}^6_{\Xi\Xi}\text{He}$ over the binding energy of ${}^6\text{He}$ could validate our forgoing remarks. For this purpose, we adopt a few-body (two- and three-body) model for the single and double- Ξ hypernuclei respectively. In our model, we treat the relatively heavier nucleus as the core and the remaining one or two Ξ hyperon(s) as the valence particle(s). For example, in ${}^6_{\Xi\Xi}\text{He}$, we treat ${}^4\text{He}$ as the core nucleus and two Ξ hyperons as valence particles. In our scheme, we will first try to reproduce the observed data for single- Ξ hyperon hypernuclei by adjusting the parameter of the effective core-hyperon potential. In the next step, we use the same Ξ -nucleus potential parameters together with chosen $\Xi\Xi$ potential to solve three-body Schrödinger equation to predict the ground state energy and wavefunction of the corresponding double Ξ -hypernuclei. Computed wavefunctions will be used to compute 3body matter radii to see whether there is any shrinkage effect in the size of target nuclei due to the absorption of Ξ hyperon(s). The paper is organized as follows. In section 2, we describe the HHE method for a three-body system consisting of two identical particles, section 3 will be devoted to results and discussion. Finally, in section 4, we shall draw our conclusions.

2 Hyperspherical Harmonics Expansion (HHE) Method

The HHE method adopted here is essentially an exact method except for an eventual truncation of the expansion basis due to computer memory limitations, in which calculation can be performed for any desired precision by gradually

increasing the size expansion basis [41] and checking the corresponding convergence trend. The method has been used successfully in our previous work on atomic and nuclear systems [41–44]. In this approach, the labeling scheme and choice of Jacobi coordinate for a general three-body system consisting of a relatively heavier core nucleus and two valence Ξ -hyperons are shown in Figure 1.

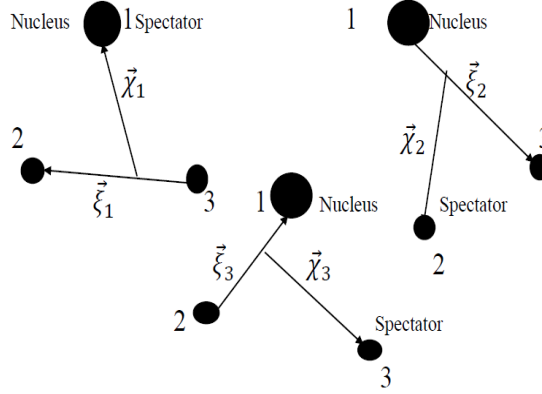


Figure 1. Label scheme and choice of Jacobi coordinates for a general three-body system in the partition “ i ”, [$i = 1, 2, 3$ – cyclic].

The Jacobi coordinates corresponding to the partition “ i ” in which particle labelled “ i ” is the spectator and those labelled as “ j ” and “ k ” form the interacting pair are defined as

$$\left. \begin{aligned} \vec{\xi}_i &= \left[\frac{m_j m_k M}{m_i (m_j + m_k)^2} \right]^{1/4} (\vec{r}_j - \vec{r}_k) \\ \vec{\chi}_i &= \left[\frac{m_i (m_j + m_k)^2}{m_j m_k M} \right]^{1/4} \left(\vec{r}_i - \frac{m_j \vec{r}_j + m_k \vec{r}_k}{m_j + m_k} \right) \end{aligned} \right\}, \quad (1)$$

where $\vec{R} = \sum_{i=1}^3 m_i \vec{r}_i / M$ is the centre of mass coordinate, $M = (m_i + m_j + m_k)$ is the total mass of the system, and sign of $\vec{\xi}_i$ is determined by the condition that (i, j, k) form a cyclic permutation of $(1, 2, 3)$. Hyperspherical variables associated with the Jacobi coordinates having a more elaborate description in Khan 2012 [41] are

$$\xi_i = \rho \cos \phi_i; \quad \chi_i = \rho \sin \phi_i, \quad (2)$$

where $\rho = \sqrt{\xi_i^2 + \chi_i^2}$; $\phi_i = \tan^{-1}(\chi_i / \xi_i)$. The motion of the three-body system in relative coordinates are then described by the Schrödinger’s equation

$$\left[-\frac{\hbar^2}{2\mu} \left\{ \frac{\partial^2}{\partial \rho^2} + \frac{5}{\rho} \frac{\partial}{\partial \rho} + \frac{\hat{K}^2(\Omega_i)}{\rho^2} \right\} + V(\rho, \Omega_i) - E \right] \psi(\rho, \Omega_i) = 0, \quad (3)$$

where $\mu = (m_i m_j m_k / M)^{1/2}$ is an effective mass parameter, $V(\rho, \Omega_i) = V_{jk} + V_{ki} + V_{ij}$ is the total interaction potential, and $\Omega_i \rightarrow \{\phi_i, \theta_{\xi_i}, \phi_{\xi_i}, \theta_{\chi_i}, \phi_{\chi_i}\}$ represents hyper-angles. The wave function $\psi(\rho, \Omega_i)$, in any chosen partition (say in the partition “ i ”) is expanded as

$$\psi(\rho, \Omega_i) = \sum_{K\sigma_i} \rho^{-5/2} W_{K\sigma_i}(\rho) \Theta_{K\sigma_i}(\Omega_i). \quad (4)$$

In Eq. (3), square of hyper angular momentum operator $\hat{K}^2(\Omega_i)$ satisfies an eigenvalue equation [41]

$$\hat{K}^2(\Omega_i) \Theta_{K\sigma_i}(\Omega_i) = K(K+4) \Theta_{K\sigma_i}(\Omega_i) \quad (5)$$

corresponding to the hyperspherical harmonics (HH) $\Theta_{K\sigma_i}(\Omega_i)$, $K = 2n_i + l_{\xi_i} + l_{\chi_i}$, n_i being non-negative integer; $\sigma_i = \{l_{\xi_i}, l_{\chi_i}, L, M\}$, angular momenta l_{ξ_i}, l_{χ_i} for $\vec{\Xi}_i, \vec{\chi}_i$ motions are coupled to define the total orbital angular momentum $\vec{L} = l_{\xi_i} + l_{\chi_i}$, M is the projection of \vec{L} . Substitution of expansion Eq. (4) in Eq. (3) and use of the orthonormality of HH lead to an infinite set of coupled differential equations (CDE) in ρ

$$\left[-\frac{\hbar^2}{2\mu} \frac{d^2}{d\rho^2} + \frac{\hbar^2}{2\mu} \frac{(K + \frac{3}{2})(K + \frac{5}{2})}{\rho^2} - E \right] W_{K\sigma_i}(\rho) + \sum_{K'\sigma'_i} M_{KK'}^{\sigma_i\sigma'_i} W_{K'\sigma'_i}(\rho) = 0. \quad (6)$$

where

$$\begin{aligned} M_{KK'}^{\sigma_i\sigma'_i} &= \langle K\sigma_i | V(\rho, \Omega_i) | K'\sigma'_i \rangle \\ &= \int \Theta_{K\sigma_i}^*(\Omega_i) V(\rho, \Omega_i) \Theta_{K'\sigma'_i}(\Omega_i) d\Omega_i \end{aligned} \quad (7)$$

represents the coupling potential matrix elements. Expansion in Eq. (4) is truncated to a finite set due to practical limitations, resulting in a finite set of CDE. The imposition of symmetry and conservation conditions further reduces the expansion basis to a solvable set of CDE. After the evaluation of coupling potential matrix elements following the prescription of Khan 2012 [41], the set of CDE Eq. (7) is solved numerically subject to proper boundary conditions to get the energy E and the partial waves $W_{K\sigma_i}(\rho)$.

3 Results and Discussions

For the core- Ξ subsystem we used a two-range Gaussian Isle-type potential of Filikhin et al. 2008 [45], 2017 [23] of the form

$$V_{\text{core-}\Xi}(r) = V_{\text{rep}} \exp(-(r/\beta_{\text{rep}})^2) - V_{\text{att}} \exp(-(r/\beta_{\text{att}})^2) \quad (8)$$

originally derived for $\alpha\Xi$ system having parameters $V_{\text{rep}} = 450.40$ MeV, $\beta_{\text{rep}} = 1.269$ fm, $V_{\text{att}} = 404.90$ MeV and $\beta_{\text{att}} = 1.41$ fm. For other Ξ -hypernuclei an effective hyperon-nucleous potential is obtained by adjusting the depth parameter of the attractive component V_{att} of the potential to reproduce the observed single- Ξ separation energy (B_{Ξ}) of the core- Ξ subsystems leaving other parameters unaltered. For double Ξ -hypernuclei, we used Nijmegen extended softcore (ESC08c) Yukawa-type two-term potential for the $\Xi\Xi$ pair found in the works of Garcilazo et al. 2016 [40], Filikhin et al. 2017 [23] and references therein

$$V_{\Xi\Xi}(r) = (-155.0 \exp(-1.75r) + 490.0 \exp(-5.6r))/r. \quad (9)$$

A Coulomb interaction is added for the charged pair of interacting particles

$$V_{ij}^{(C)}(r_{ij}) = \begin{cases} 1.44 \left(\frac{Z_i Z_j}{2R_c} \right) \left(3 - \frac{r_{ij}^2}{R_c^2} \right) & \text{when } r_{ij} \leq R_c, \\ 1.44 \left(\frac{Z_i Z_j}{r_{ij}} \right) & \text{when } r_{ij} > R_c, \end{cases} \quad (10)$$

where $R_c = R_0 A^{1/3}$ is the radius of the core nucleus. In a hypernucleus since the core nucleus contains only nucleons and no Ξ hyperon, no Pauli symmetry requirements under exchange of valence hyperon(s) and nucleons occur. However, symmetry requirement arises due to (a) antisymmetrization of the nuclear wave function under the exchange nucleons, which is suppressed in the choice of the core as a building block and (b) antisymmetrization of the three-body wave function under exchange of the valence hyperons have been correctly incorporated by restricting l_{ξ_i} values. Most of the observed double-hyperon hypernuclei have total angular momentum $J = 0$, and even parity in their ground state. For spin-less nuclear core (i.e., $s_1 = 0$), total spin ($S = s_1 + s_2 + s_3$) of the three-body system has two allowed values either 0 or 1, since hyperons are fermions having odd-half spins. Since, $J = 0$, then for $S = 0$, $L = 0$; and for $S = 1$, $L = 1$. Hence, the spectroscopic notation for the ground state of double-hyperon hypernuclei are 1S_0 and 3P_0 corresponding to $J = 0$, $S = 0$, $L = 0$ and $J = 0$, $S = 1$, $L = 1$, respectively.

The core nucleus being spinless, $S = 0$ corresponds to zero total spin of the valence hyperons (i.e. $S_{23} = 0$), hence the spin part of the three-body wave function is antisymmetric under exchange of spins of two Ξ hyperons, leaving the spatial part of the wavefunction symmetric under exchange of their spatial coordinates. Under pair exchange operator P_{23} , which interchanges particles 2 and 3, $\xi_i \rightarrow -\xi_i$ and χ_i remains unchanged. Thus P_{23} acts like the parity operator for the pair (23) only. If we consider two valence Ξ -hyperons in spin singlet state (which is spin anti-symmetric), the space part of their wave function must be symmetric under P_{23} . This restricts l_{ξ_i} to take even values only. Again, for singlet spin state, total orbital angular momentum $L = 0$, so $l_{\xi_i} = l_{\chi_i} =$ even integer. Finally, since $K = 2n_i + l_{\xi_i} + l_{\chi_i}$, n_i being a non-negative integer,

K must be even and

$$l_{\xi_i} = l_{\chi_i} = 0, 2, 4, \dots, \frac{K}{2} \quad \left[\text{or} \left(\frac{K}{2} - 1 \right) \right] \quad (11)$$

for $\frac{K}{2}$ being even or odd, respectively.

For $S = 1$, two Ξ -hyperons will be in the symmetric spin triplet state $S_{23} = 1$ and the corresponding space wavefunction must be antisymmetric under P_{23} , allowing only $l_{\xi_i} = \text{odd}$ integral values. As, the total orbital angular momentum $L = 1$, $|(l_{\xi_i} - 1)| \leq l_{\chi_i} \leq (l_{\xi_i} + 1)$, but parity conservation allows $l_{\chi_i} = l_{\xi_i}$ only. Thus $K = 2n_i + l_{\xi_i} + l_{\chi_i}$, with non-negative integer n_i , allows only even values of K , so

$$l_{\xi_i} = l_{\chi_i} = 1, 3, 5, \dots, \frac{K}{2} \quad \left[\text{or} \left(\frac{K}{2} - 1 \right) \right] \quad (12)$$

for $\frac{K}{2}$ being odd or even, respectively.

In the practical calculation, the HH expansion basis given by Eq. (4) is truncated to a maximum value (K_{\max}) of K and $0 \leq (l_{\xi_i} + l_{\chi_i}) \leq K$. For each allowed $K \leq K_{\max}$ with $K = \text{even}$ integers, all allowed values of l_{ξ_i} are included. The even values of l_{ξ_i} correspond to $L = 0$, $S = 0$ while the odd values of l_{ξ_i} correspond to $L = 1$, $S = 1$. This truncates Eq. (6) to a set of N coupled differential equations given by

$$\begin{aligned} N &= \frac{1}{8}(K_{\max}^2 + 6K_{\max} + 8) \quad \left[\text{when} \frac{K_{\max}}{2} \text{ is even} \right] \\ &= \frac{1}{8}(K_{\max} + 2)^2 \quad \left[\text{when} \frac{K_{\max}}{2} \text{ is odd} \right] \end{aligned} \quad (13)$$

It follows from Eq. (13), that the number of CDE's increases in quadratic form with K_{\max} , hence in practice Eq. (6) is truncated to a manageable size depending on the available computer facility and the resulting set of CDE's are solved using hyperspherical adiabatic approximation (HAA) [46]. The calculated single- Ξ separation energies for few single-hyperon hypernuclei together with the depth of the attractive component of effective hyperon-nucleon (YN) potential are presented in Table 1. Experimental and theoretical data found in the literature for these systems are also presented in Table 1 for comparison.

Calculated double- Ξ separation energies for the corresponding double-hyperon hypernuclei forming three-body systems are also presented in Table 2.

The $\Xi\Xi$ bond energy, $\Delta B_{\Xi\Xi}$ presented in Table 2 is connected to the single- and double- Ξ binding energies as

$$\begin{aligned} \Delta B_{\Xi\Xi} &= B_{\Xi\Xi}(\overset{A}{\Xi\Xi}X) - 2B_{\Xi}(\overset{A-1}{\Xi}X); B_{\Xi\Xi}(\overset{A}{\Xi\Xi}X) \\ &= [M(\overset{A-2}{X}) + 2M_{\Xi} - M(\overset{A}{\Xi\Xi}X)]c^2. \end{aligned} \quad (14)$$

Table 1. Parameters of the attractive component of the core- Ξ potential and corresponding single- Ξ separation energy (B_{Ξ}) for few different single- Ξ hypernuclei.

Systems	Potential parameters		B_{Ξ} (MeV)		
	V_{att}	β_{att} (fm)	Present work	Other's work	Exp.
${}^5_{\Xi}\text{-He}$	404.900	1.41	3.3396	3.61 [45]	
${}^{13}_{\Xi}\text{-C}$	381.450	1.41	3.7030	0.940 [18]	3.70^{+18}_{-19} [11]
${}^{15}_{\Xi}\text{-C}$	387.961	1.41	4.3894	14.4 [45]	18.1 ± 3.2 [9]
${}^{17}_{\Xi}\text{-O}$	442.100	1.41	16.0320	4.4 [22]	4.38 ± 0.25 [14]
${}^{89}_{\Xi}\text{-Sr}$	417.670	1.41	21.3030	14.4 [17]	16.0 ± 4.7 [7]
				16.5 [17]	16.0 ± 5.5 [7]
				21.2 [20]	

 Table 2. Calculated double- Ξ separation energy ($B_{\Xi\Xi}$), $\Xi\Xi$ bond energy ($\Delta B_{\Xi\Xi}$) and geometrical observables for some double- Ξ hypernuclei.

Systems	${}^6_{\Xi\Xi}\text{He}$	${}^{14}_{\Xi\Xi}\text{C}$	${}^{16}_{\Xi\Xi}\text{C}$	${}^{18}_{\Xi\Xi}\text{O}$	${}^{90}_{\Xi\Xi}\text{Sr}$
$B_{\Xi\Xi}$ (MeV)	10.3149	9.9128	11.6269	38.5102	47.5565
$\Delta B_{\Xi\Xi}$ (MeV)	3.6357	2.5068	2.8479	6.4460	4.9505
R_{3B}	2.1341	2.5865	2.6589	2.6514	4.8301
$R_{c\Xi}$	2.5877	2.8587	2.6970	1.8221	2.0752
$R_{\Xi\Xi}$	3.1432	3.5606	3.3506	2.2540	2.5436
$R_{(\Xi\Xi)c}$	2.0550	2.2367	2.1136	1.4318	1.6399
R_c^{CM}	0.8525	0.44253	0.3541	0.2144	0.0509
R_{Ξ}^{CM}	1.9796	2.5398	2.4295	1.6590	2.0353
η	0.3564	0.3316	0.3299	0.3198	0.3167

Filikhin et al., (2017) [23] reported a single- Ξ separation energy $B_{\Xi} = 2.09$ MeV and two- Ξ separation energy $B_{\Xi\Xi} = 7.635$ MeV in $\Xi\Xi\alpha$ three-body system using differential Faddeev equations without taking into account Coulomb interaction. Representative plots of the nature of core- Ξ (Eq. (8)), $\Xi\Xi$ (Eq. (9)) and $\Xi\Xi$ core three-body effective potentials for ${}^6_{\Xi\Xi}\text{He}$ and ${}^{16}_{\Xi\Xi}\text{C}$ hypernuclei are shown in Figures 2 and 3, respectively.

With gradual increase in the number of contributing partial waves, the two-hyperon separation energy ($B_{\Xi\Xi}$) advances towards convergence which is presented in Table 3 and Table 4.

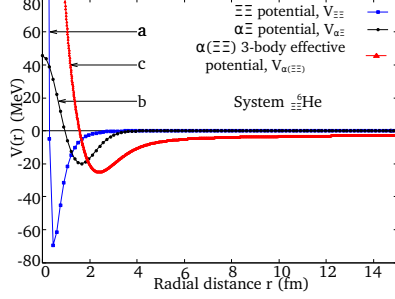


Figure 2. (Color online) Representative plot of interaction potentials for ${}^6_{\Xi\Xi}\text{He}$: (a) $\Xi\Xi$ potential, $V_{\Xi\Xi}$; [23] (b) $\alpha\Xi$ potential, $V_{\alpha\Xi}$; and (c) $\alpha(\Xi\Xi)$ 3-body effective potential, $V_{\alpha(\Xi\Xi)}$.

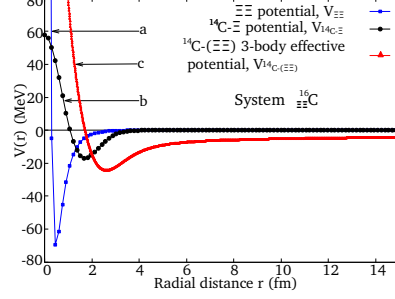


Figure 3. (Color online) Representative plot of interaction potentials for ${}^{16}_{\Xi\Xi}\text{C}$: (a) $\Xi\Xi$ potential, $V_{\Xi\Xi}$; [23] (b) ${}^{14}\text{C}-\Xi$ potential, $V_{{}^{14}\text{C}-\Xi}$; and (c) ${}^{14}\text{C}-(\Xi\Xi)$ 3-body effective potential, $V_{{}^{14}\text{C}-(\Xi\Xi)}$.

Table 3. Calculated double- Ξ separation energy ($B_{\Xi\Xi}$), Relative convergence ratio $\Delta B/B$, geometrical size parameters for different K_{\max} for ${}^6_{\Xi\Xi}\text{He}$ system.

K_{\max}	$B_{\Xi\Xi}$		r.m.s radii (fm)							η
	(MeV)	$\Delta B/B$	R_{3B}	$R_{c\Xi}$	$R_{\Xi\Xi}$	$R_{(\Xi\Xi)c}$	R_c^{CM}	R_{Ξ}^{CM}		
0	7.8802		2.2034	2.7242	3.3103	2.1637	0.8976	2.0839	0.3268	
4	9.7937	0.2428	2.1330	2.5856	3.1451	2.0524	0.8515	1.9787	0.3531	
8	10.0112	0.0222	2.1364	2.5922	3.1602	2.0550	0.8525	1.9856	0.3531	
12	10.1282	0.0117	2.1380	2.5955	3.1653	2.0511	0.8534	1.9884	0.3533	
16	10.2097	0.0080	2.1370	2.5935	3.1615	2.0561	0.8530	1.9865	0.3542	
20	10.2709	0.0059	2.1354	2.5904	3.1532	2.0553	0.8527	1.9829	0.3554	
24	10.3149	0.0043	2.1341	2.5877	3.1432	2.0550	0.8525	1.9796	0.3564	

Table 4. Calculated double- Ξ separation energy ($B_{\Xi\Xi}$), Relative convergence ratio $\Delta B/B$, geometrical size parameters for different K_{\max} for ${}^{16}_{\Xi\Xi}\text{C}$ system.

K_{\max}	$B_{\Xi\Xi}$		r.m.s radii (fm)							η
	(MeV)	$\Delta B/B$	R_{3B}	$R_{c\Xi}$	$R_{\Xi\Xi}$	$R_{(\Xi\Xi)c}$	R_c^{CM}	R_{Ξ}^{CM}		
0	8.6052		2.7001	2.9310	3.9510	2.1652	0.3627	2.6742	0.2740	
4	11.0509	0.2848	2.6566	2.6837	3.3711	2.0884	0.3499	2.4215	0.3223	
8	11.4519	0.0298	2.6581	2.6924	3.3594	2.1041	0.3525	2.4269	0.3269	
12	11.5339	0.0075	2.6603	2.7052	3.3726	2.1152	0.3544	2.4381	0.3273	
16	11.5848	0.0048	2.6603	2.7051	3.3714	2.1157	0.3544	2.4379	0.3279	
20	11.6369	0.0046	2.6596	2.7012	3.3618	2.1145	0.3542	2.4339	0.3289	
24	11.6832	0.0040	2.6589	2.6970	3.3506	2.1136	0.3541	2.4295	0.3299	

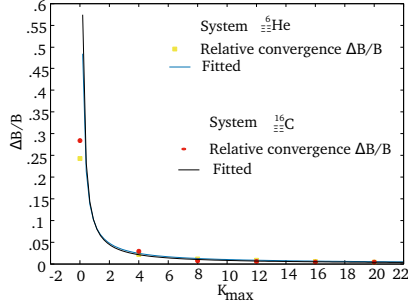


Figure 4. (Color online) Relative convergence ($\Delta B/B$) of double- Ξ separation energy ($B_{\Xi\Xi}$) with respect to K_{\max} for ${}^6_{\Xi\Xi}\text{He}$ and ${}^{16}_{\Xi\Xi}\text{C}$ using data from Table 3 and Table 4, respectively.

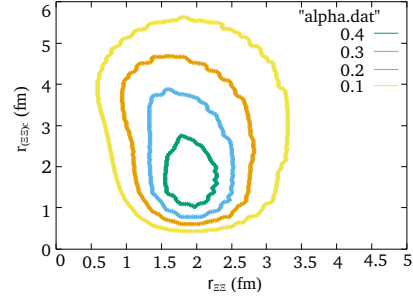


Figure 5. (Color online) Contour plot of probability density distribution of the nucleons and hyperons in the ground state of ${}^6_{\Xi\Xi}\text{He}$ system in the $\xi - \chi$ plane (where ξ , χ are in fm).

Figure 4 is aimed at depicting the pattern of convergence in terms of the ratio $\Delta B/B$ (see Eq. (15)) with respect to the hyper angular momentum quantum number K_{\max} using data presented in Tables 3 and 4. The relative convergence is defined as

$$\frac{\Delta B}{B} = \frac{B(K+4) - B(K)}{B(K)} \quad (15)$$

and it is found to have an excellent fit with the expression

$$y(x) = ax^{-b} \quad (16)$$

for $a = 0.092974$, $b = 1.96792$ for ${}^6_{\Xi\Xi}\text{He}$ and $a = 0.092974$, $b = 1.06679$ for ${}^{16}_{\Xi\Xi}\text{C}$, respectively.

In Figure 5 density distribution of position probability of the hyperons is presented which shows a pear-like shape. A relatively larger separation between the contour lines at the upper region indicates a relatively lower density of hyperons. While a relatively smaller separation between the contour lines at the bottom region of the plot indicates a relatively higher density of hyperons around the nucleus. Thus the plot reflects an interesting fact that the Ξ hyperons are more concentrated in the vicinity of the nucleus.

The ground state wave function computed at $K_{\max} = 24$ for representative cases are shown in Figure 6 and Figure 7.

In addition to energy, some geometrical observable of the three-body systems have also been computed using the ground state wave function. These include the root mean squared (r.m.s.) radius of the three-body system defined as

$$R_{3B} = \left[\frac{A_c R_c^2 + m_{\Xi} R_{c\Xi}^2}{A_c + 2x} \right]^{1/2}, \quad (17)$$

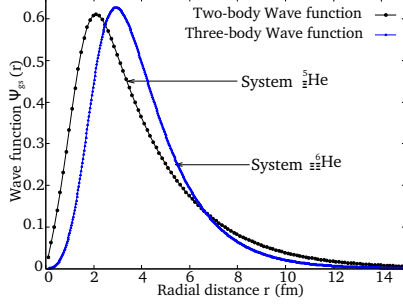


Figure 6. (Color online) Representative plot of the ground state wave function $\psi_{gs}(\rho)$ for two-body ${}^5_{\Xi}\text{He}$ and three-body ${}^6_{\Xi\Xi}\text{He}$ systems.

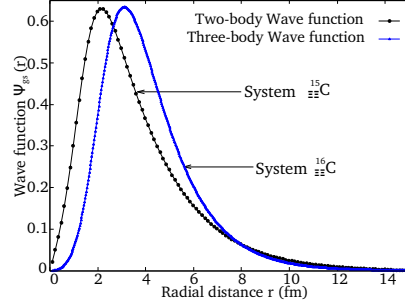


Figure 7. (Color online) Representative plot of the ground state wave function $\psi_{gs}(\rho)$ for two-body ${}^{15}_{\Xi}\text{C}$ and ${}^{16}_{\Xi\Xi}\text{C}$ systems.

where A_c , m_{Ξ} are the masses of the core and the hyperon in units of the nucleon mass, $x = m_{\Xi}/m_n$ and $R_c = 1.1A_c^{1/3}$ fm is the matter radius of the core nucleus. The r.m.s. core- Ξ separation is obtained using the expression

$$R_{c\Xi} = [\langle r_{13}^2 + r_{12}^2 \rangle / 2]^{1/2}. \quad (18)$$

The calculated r.m.s. radii for increasing $K_{\max} = 0, 4, 8, \dots$ etc. up to 24 for ${}^6_{\Xi\Xi}\text{He}$ and ${}^{16}_{\Xi\Xi}\text{C}$ are presented in Tables 3 and 4 respectively. A correlation coefficient defined as $\eta = \left\langle \frac{r_{(\Xi\Xi)c}^2}{\rho^2} \right\rangle$ also computed using the ground state wavefunction. A small value of this coefficient indicates that the two valence hyperons are positioned on two opposite sides of the core nuclei (i.e., a cigar shape where the Ξ -hyperons are anti-correlated) and a relatively larger value (≤ 1) will suggest the possibility of $\Xi\Xi$ correlation.

4 Conclusions

In the present scheme, we have first reproduced the observed ground state data for the core- Ξ two-body subsystems of the core- $\Xi\Xi$ three-body systems, by adjusting the parameters of the core- Ξ potential. We then used the same set of core- ξ potential together with the Nijmegen extended softcore $\Xi\Xi$ hyperon-hyperon potential to compute energy and wavefunctions for the corresponding double- Ξ hypernuclei. From the data presented in Tables 3 and 4, it can be seen that the convergence of energy is slower than that for the geometrical observables for increasing K_{\max} . The convergence trend of energy with increasing K_{\max} has been demonstrated graphically in Figure 4. One can see that for the chosen set of potential ${}^5_{\Xi}\text{He}$ is bound by about 3.3 MeV over ${}^5\text{He}$ which is unbound. And ${}^6_{\Xi\Xi}\text{He}$ is bound by 10.3 MeV as compared to ${}^6\text{He}$ which

is bound by only 0.973 ± 0.04 MeV [42, 47]. The results may also be compared with the corresponding experimental values for ${}^6_{\Lambda\Lambda}\text{He}$, to see that Ξ has more affinity towards nucleons than the Λ hyperon since ${}^5_{\Lambda}\text{He}$ is bound by about 3.12 ± 0.02 MeV [43, 48] as compared to 3.3 MeV for ${}^5_{\Xi}\text{He}$ and ${}^6_{\Lambda\Lambda}\text{He}$ is bound by $7.25 \pm 0.19^{+0.18}_{-0.11}$ MeV [48] or 6.91 ± 0.16 MeV [49] as compared to 10.3 MeV for ${}^6_{\Xi\Xi}\text{He}$. Another remarkable point is that absorption of strange hyperon's produce shrinkage effect in target nucleus which is reflected in the calculated RMS matter radius of 2.13 fm for ${}^6_{\Xi\Xi}\text{He}$ which is smaller than 2.57 ± 0.1 fm for ${}^6\text{He}$ [42, 50]. For the single Ξ hypernuclei our calculated data is in fair agreement with the works of others. However, due to the non-availability of observed data on double- Ξ hypernuclei, we cannot compare our results in Table 2 with other works. For the available desktop PC configuration, we are allowed to expand the HH basis up to $K_{\max} = 24$ only, which is lagging behind the full convergent solution. But one of the great advantages of the present method is that one can achieve any desired precision in energy by extrapolating the data calculated for smaller K_{\max} (Eg. ≤ 24 in the present case), by applying hyperspherical extrapolation technique discussed in [42, 51]. Finally, we may add that the method adopted here is a robust one for the description of any nuclear or atomic few-body systems subject to the appropriate choice of two-body potentials and symmetry requirements.

Acknowledgements

Authors acknowledge the computational facilities provided by Aliah University, Kolkata, India.

References

- [1] R. Armenteros, K. H. Barker, C. C. Butler, A. Cachon, and C. M. York (1952) *The London, Edinburgh, and Dublin Philosophical Magazine and journal of science* **43** 597.
- [2] M. Gell-Mann (1956) *Suppl. Nuovo cimento* **4** 848.
- [3] L. W. Alvarez, P. Eberhard, M. L. Good, W. Graziano, H. K. Ticho, and S. G. Wojcicki (1959) *Phys. Rev. Lett.* **2** 215.
- [4] V. E. Barnes P. L. Connolly, D. J. Crennell et al. (1964) *Phys. Rev. Lett.* **12** 204.
- [5] W. H. Barkas, N. N. Biswas, D. A. DeLise et al., (1959) *Phys. Rev. Lett.* **2** 466.
- [6] D. H. Wilkinson, S. J. St. Lorant, D. K. Robinson, and S. Lokanathan (1959) *Phys. Rev. Lett.* **3** 397.
- [7] A. Bechdloff, G. Baumann, J. P. Gerber, and P. Cüer (1968) *Phys. Lett. B* **26** 174.
- [8] J. Catala et al. (1969) In: *Proceedings of International Conference on hypernuclear Physics*, Argonne, Illinois vol.2, pp. 758.
- [9] A. S. Mondal, A. K. Basak, M. M. Kasim, and A. Husain (1979) *Nuovo Cimento A* **54** 333.
- [10] C. B. Dover and A. Gal (1983) *ANNALS OF PHYSICS* **146** 309.

- [11] S. Aoki et al. (1995) *Phys. Lett. B* **355** 45.
- [12] T. Fukuda et al. (1998) *Phys. Rev. C* **58** 1306.
- [13] P. Khaustov et al. (2000) *Phys. Rev. C* **61** 054603.
- [14] K. Nakazawa et al. (2015) *Prog. Theor. Exp. Phys.* 033D02
- [15] C. B. Dover (1979) In: *Proceedings of International Conference on Hypernuclear and Low Energy Kaon Physics*, Jablonna, Poland, September 11-14 ; *Nukleonika* (1980) **25** 521.
- [16] M. Shoeb and M. Z. R. Khan (1984) *J. Phys. G: Nucl. Phys.* **10** 1739.
- [17] G. A. Lalazissis et al. (1989) *J. Phys. G: Nucl. Part. Phys.* **15** 303.
- [18] M. Yamaguchi, K. Tominaga, Y. Yamamoto, and T. Ueda (2001) *Prog. Theor. Phys.* **105** 627.
- [19] E. Hiyama, Y. Yamamoto, T. Motoba, Th. A. Rijken, and M. Kamimura (2008) *Phys. Rev. C* **78** 054316.
- [20] Y. Yamamoto, T. Motoba, and Th. A. Rijken (2010) *Prog. Theor. Phys. Suppl.* **185** 72.
- [21] R. Shyam et al. (2012) *Nucl. Phys. A* **881** 253.
- [22] T. T. Sun, E. Hiyama, H. Sagawa, H. J. Schulze, and J. Meng (2016) *Phys. Rev. C* **94** 064319.
- [23] I. Filikhin, V. M. Suslov, and B. Vlahovic (2017) *Math. Model. and Geom.* **5** 1.
- [24] Z.-X. Liu et al. (2018) *Phys. Rev. C* **98** 024316.
- [25] E. Hiyama, M. Isaka M. Kamimura, T. Myo, and T. Motoba (2015) *Phys. Rev. C* **91** 054316.
- [26] H. J. Xia et al. (2019) *Sci. China-Phys. Mech. Astron* **62** 042011.
- [27] N. Buyukcizmeci et al. (2013) *Phys. Rev. C* **88** 014611.
- [28] E. Hiyama, M. Kamimura, Y. Yamamoto, and T. Motoba (2010) *Phys. Rev. Lett.* **104** 212502.
- [29] S. H. Ren, T. T. Sun, and W. Zhang (2017) *Phys. Rev. C* **95** 054318.
- [30] M. Isaka, M. Kimura, A. Doté, and A. Ohnishi (2013) *Phys. Rev. C* **87** 021304.
- [31] B.-N. Lu, E. Hiyama, H. Sagawa, and S.-G. Zhou (2014) *Phys. Rev. C* **89** 044307.
- [32] K. Hagino, J. M. Yao, F. Minato, Z. P. Li, and M. T. Win (2013) *Nucl. Phys. A* **914** 151.
- [33] X.-R. Zhou, A. Polls, H.-J. Schulze, and I. Vidaña (2008) *Phys. Rev. C* **78** 054306.
- [34] H.-F. Lü, J. Meng, S. Q. Zhang, and S.-G. Zhou (2003) *Eur. Phys. J. A* **17** 19.
- [35] M. Danysz and J. Pniewski (1953) *The London, Edinburgh, and Dublin Philosophical Magazine and Journal of Science: Series 7*, **44:350** 348.
- [36] J. Schaffner-Bielich (2008) *Nucl. Phys. A* **804** 309.
- [37] V. B. Belyaev, S. A. Rakityansky, and W. Sandhas (2008) *Nucl. Phys. A* **803** 210.
- [38] H. Bando, T. Motoba, and J. Zofka (1990) *Int. J. Mod. Phys. A* **5** 4021.
- [39] A. Feliciello, T. Nagae (2015) *Rep. Prog. Phys.* **78** 096301.
- [40] H. Garcilazo and A. Valcarce (2016) *Phys. Rev. C* **93** 064003.
- [41] Md. A. Khan (2012) *Eur. Phys. J. D* **66** 83.
- [42] Md. A. Khan and T. K. Das (2001) *PRAMANA Journal of Physics* **57** 701.
- [43] Md. A. Khan and T. K. Das (2001) *Int. J. Mod. Phys. E* **10** 107.
- [44] Md. A. Khan and T. K. Das (2000) *FIZIKA B (Zagreb)* **9** 2 55.

- [45] I. Filikhin et al. (2008) *J. Phys. G: Nucl. Part. Phys.* **35** 035103.
- [46] T. K. Das, H. T. Coelho, and M. Fabre de la Ripelle (1982) *Phys. Rev. C* **26** 2281.
- [47] M. V. Zhukov, B. V. Danilin, and D. V. Federov (1993) *Phys. Rep.* **231** 151.
- [48] H. Takahashi et al. (2001) *Phys. Rev. Lett.* **87** 212502.
- [49] J. K. Ahn et al. (2013) *Phys. Rev. C* **88** 014003.
- [50] L. V. Chulkov, B. V. Danilin, V. D. Efros, A. A. Korshennikov, and M. V. Zhukov (1989) *Europhys. Lett.* **8** 245.
- [51] T. R. Schneider (1972) *Phys. Lett. B* **40** 439.