

# Blackbaud Cloud Operations in a Microsoft® Azure Environment

## For EMEA-based Organisations

As the leading provider of software for powering social impact, Blackbaud is committed to providing our customers with a modern, high-performance cloud environment. We know your cloud solutions are essential to your mission, and it's crucial they're effective, secure, and scalable.

Blackbaud provides enhanced security, reliability, and performance, so you spend more time on your mission—not your tech stack.

To ensure you benefit from the best possible environments today and tomorrow, Blackbaud has partnerships with trusted cloud service providers, including Microsoft Azure.

A leader in multiple Gartner Magic Quadrant categories, Azure is recognized for security and scale. Blackbaud has been developing on the Microsoft stack for over three decades and is one of Microsoft's top Azure-based providers.

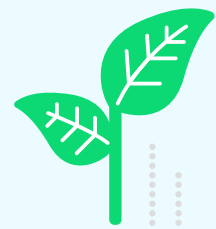
For Blackbaud Cloud Operations<sup>1</sup> customers, data at rest generally resides within your geographic region — e.g. Europe, Middle East, and Africa (EMEA) customers' data will reside in Europe etc. There are some limited cases in which data resides outside a customer's geographic region<sup>2</sup>. Blackbaud complies with the EU-U.S. Data Privacy Framework, the UK Extension to the EU-U.S. Data Privacy Framework, and the Swiss-U.S. Data Privacy Framework as set forth by the U.S. Department of Commerce regarding the collection, use, and retention of personal information transferred from the EU, UK, and Switzerland to the United States.

### Five reasons Blackbaud Cloud Operations in a Microsoft Azure environment are a great fit

#### Reliability

Blackbaud solutions reside on highly available, high-performance servers and leverage latest technologies. There's no need to worry about maintaining an on-premise database thanks to the hybrid cloud.

<sup>1</sup>Certain Blackbaud solutions, such as Blackbaud Award Management, reside in a geo-located Blackbaud Cloud Operations Amazon Web Services environment. <sup>2</sup>Certain Blackbaud services and solutions — such as email and payment services, the applicant portal in Blackbaud Grantmaking™ and YourCause® GrantsConnect® and Blackbaud Impact Edge™ reporting—currently reside in US cloud environments. Once moved, Blackbaud eTapestry will also reside in a US cloud environment.



### We're committed to your success.

Our Cloud Operations team will ensure optimal configuration and performance in our Microsoft Azure environments in Europe.

[Learn More](#)

### Scalability

Microsoft Azure's on-demand architecture makes it an ideal platform for your deployment. Designed to withstand surges – like increased donations on major giving days, or increased access on application deadlines – the scalability of Azure meets the demand of your organisation and adjusts to accommodate your changing needs quickly and seamlessly.

### Performance

Instead of storing your organisation's data on a single machine, Azure distributes it across multiple machines throughout Blackbaud's massive Azure server architecture. This provides a layer of redundancy that keeps your deployment running if maintenance needs to be performed on one of the machines.

### Security

Microsoft Azure provides competitive encryption options and compliance coverage. With its Federal Risk and Authorisation Management Program (FedRAMP) High authorisation—which includes 18 Azure services—more than 70 compliance coverings, and commitment to the General Data Protection Regulation (GDPR) requirements, it's the most trusted cloud.

### Affordability

With no costly hardware to purchase or maintain, deploying your Blackbaud solutions in Azure is convenient, cost effective, and scalable.



**99.9%**  
monthly uptime  
guaranteed



**24/7**  
monitoring

## Get more benefits with Blackbaud Cloud Operations and Microsoft Azure together

- Physical, operational, and software measures for 24/7 monitoring
- Blackbaud's 99.9% uptime commitment
- Highly-redundant architecture for improved performance
- Service-oriented architecture for rapid product deployment and efficient issue mitigation
- Automated infrastructure to better manage capacity and performance
- Dedicated environments
- Real-time enhancements and updates with minimal system downtime
- End-to-end servicing of your solutions to free your IT staff and reduce cost
- Modern Internet data transfer for external and internal traffic
- Data storage in a secure Microsoft Azure cloud environment

### About Blackbaud

Blackbaud unleashes the potential of the people and organizations who change the world. As the leading software provider exclusively dedicated to powering social impact, Blackbaud expands what is possible across the nonprofit and education sectors, at companies committed to social responsibility, and for individual change makers. Built specifically for fundraising, nonprofit financial management, digital giving, grantmaking, corporate social responsibility and education management, Blackbaud's essential software accelerates impact through unmatched expertise and powerful data intelligence. Millions of people across more than 100 countries connect, give, learn, and engage through Blackbaud platforms.

