



Mechanisms, regulation and functions of the unfolded protein response

Claudio Hetz^{1,2,3,4}, Kezhong Zhang^{5,6} and Randal J. Kaufman⁷

Abstract | Cellular stress induced by the abnormal accumulation of unfolded or misfolded proteins at the endoplasmic reticulum (ER) is emerging as a possible driver of human diseases, including cancer, diabetes, obesity and neurodegeneration. ER proteostasis surveillance is mediated by the unfolded protein response (UPR), a signal transduction pathway that senses the fidelity of protein folding in the ER lumen. The UPR transmits information about protein folding status to the nucleus and cytosol to adjust the protein folding capacity of the cell or, in the event of chronic damage, induce apoptotic cell death. Recent advances in the understanding of the regulation of UPR signalling and its implications in the pathophysiology of disease might open new therapeutic avenues.

The secretory pathway is responsible for the synthesis of one third of all eukaryotic cell proteins, their post-translational modification and assembly into complexes, and their delivery to precise destinations within the cell or their release into the extracellular space. Proteins enter the secretory pathway by translocation from the cytosol into the endoplasmic reticulum (ER) in an unfolded state, where they undergo chaperone-assisted folding to acquire their appropriate 3D conformation. Unlike DNA replication, transcription and translation, protein folding is a highly error-prone process¹. Thus, maintenance of a healthy proteome depends on complex quality control mechanisms, some of which operate at the level of the ER to promote efficient protein folding and trafficking.

ER homeostasis is constantly challenged by physiological demands and pathological insults, impacting its multiple functions in the cell as a Ca²⁺ reservoir, a factory for protein folding and assembly, a site for lipid and sterol biosynthesis, and as a platform for signalling and interorganelle communication. Increased protein secretion or disrupted ER protein folding can cause accumulation of unfolded or misfolded proteins in the ER lumen — a condition referred to as ‘ER stress’. To ensure protein folding fidelity and to maintain ER functions, the unfolded protein response (UPR) of eukaryotic cells evolved to a network of signal transduction pathways to reprogramme gene transcription, mRNA translation and protein modifications to relieve the load of unfolded or misfolded proteins and restore protein homeostasis (proteostasis²) (FIG. 1).

The UPR orchestrates the enforcement of adaptive mechanisms to maintain an optimal rate of protein production and rapidly reacts to diverse stimuli, including extracellular responses to hormones, growth factors and

small ligands that bind cell-surface receptors; intracellular homeostatic changes such as altered nutrient levels, energy status and redox balance; changes in cellular growth and differentiation; and disruption in the ER protein folding capacity. Activation of the UPR impacts almost every aspect of the secretory pathway, modifying the rate of protein synthesis and translocation into the ER, protein folding, maturation and quality control, protein trafficking and the elimination of misfolded proteins through the autophagy and ER-associated protein degradation (ERAD) pathways.

Here we review salient and unique features of the UPR uncovered in the past few years. We first describe how protein misfolding in the ER is sensed through the three conserved signal transducers to preserve ER functions vital for cell survival. We then give an overview of the consequences of misfolded protein accumulation by discussing recently discovered mechanisms that regulate apoptosis in cells experiencing prolonged ER stress. Recently, it has become evident that the UPR has essential cell functions beyond ER proteostasis, and therefore we discuss how the UPR controls organelle interactions, bioenergetics, cytoskeletal dynamics, the DNA damage response and cell signalling crosstalk at both the cell-autonomous and nonautonomous level. Finally, we review the emerging roles of the UPR in the pathogenesis of diseases, including metabolic syndromes, cancer, immunological disorders and neurodegenerative conditions.

ER stress and the three UPR branches

Initially discovered in yeast (BOX 1), the basic UPR pathways in mammals consist of three main signalling cascades initiated by the ER transmembrane protein sensors: IRE1 α , PERK and ATF6 α ³. These signal-transducing

¹Biomedical Neuroscience Institute, Faculty of Medicine, University of Chile, Santiago, Chile.

²FONDAP Center for Geroscience Brain Health and Metabolism (GERO), Santiago, Chile.

³Program of Cellular and Molecular Biology, Institute of Biomedical Science, University of Chile, Santiago, Chile.

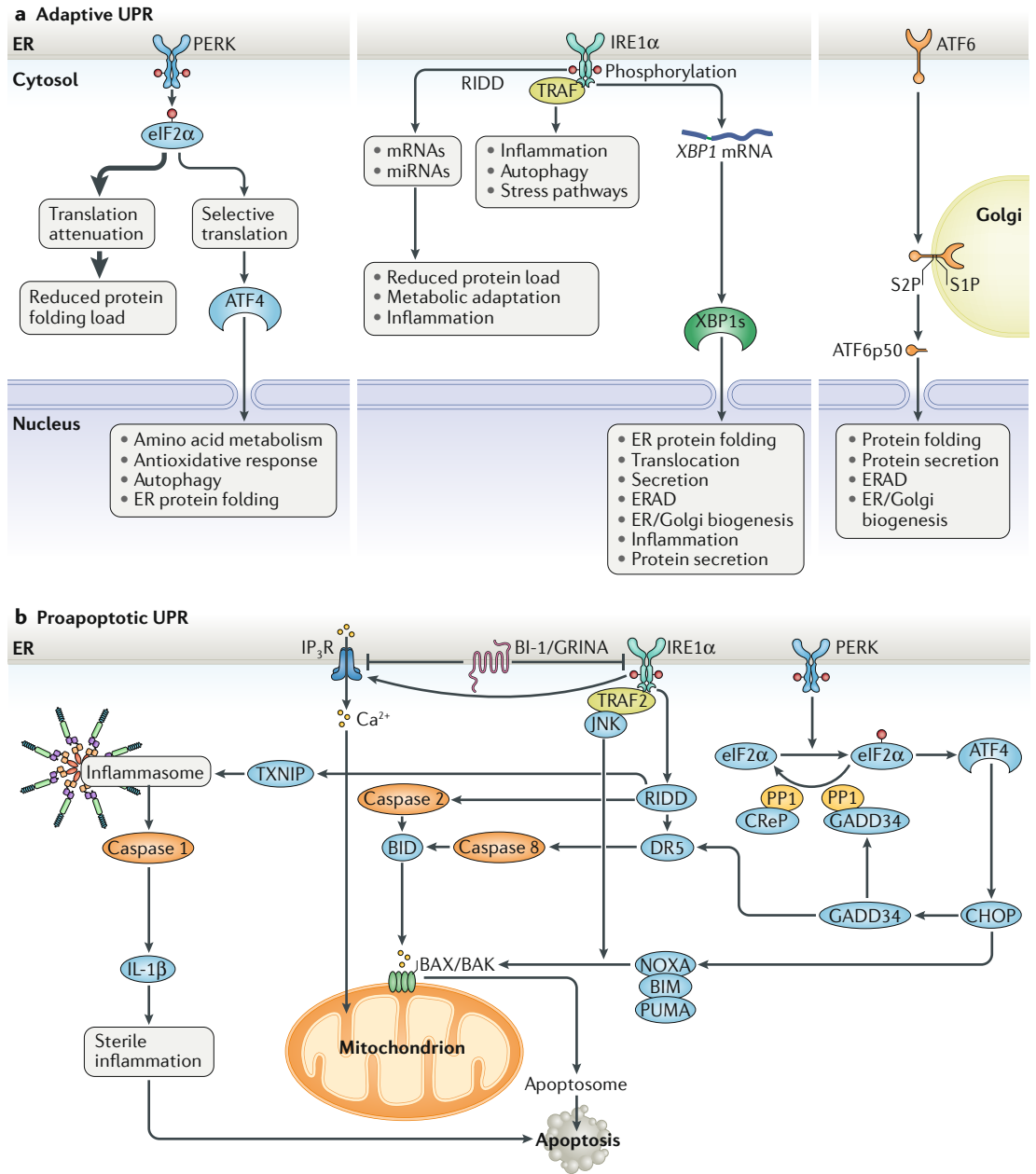
⁴Buck Institute for Research on Aging, Novato, CA, USA.

⁵Center for Molecular Medicine and Genetics, Wayne State University School of Medicine, Detroit, MI, USA.

⁶Department of Biochemistry, Microbiology and Immunology, Wayne State University School of Medicine, Detroit, MI, USA.

⁷Degenerative Diseases Program, Sanford Burnham Prebys Medical Discovery Institute, La Jolla, CA, USA.

✉e-mail: chetz@med.uchile.cl; kzhang@med.wayne.edu; rkaufman@sbpdiscovey.org
<https://doi.org/10.1038/s41580-020-0250-z>



proteins contain ER luminal domains that sense unfolded protein peptides (see later) and cytosolic regions that signal through the translational or transcriptional apparatus or by interacting with signalling molecules as scaffold to protect cells from ER stress under physiological conditions. Here we discuss fundamental aspects of UPR signalling and the consequences that determine cell fate under ER stress. Owing to the length restriction, we are unable to acknowledge many contributions, but refer to reviews for historical or background information^{3,4}.

UPR signalling through PERK. An immediate adaptive reaction to ER stress is initiated by PERK, a kinase that phosphorylates eukaryotic translation initiation factor 2 subunit- α (eIF2 α), leading to the transient attenuation of protein synthesis^{3,4} (FIG. 1a). This reversible covalent modification limits the protein misfolding load by preventing the influx of newly synthesized proteins into the ER.

Concomitantly, phosphorylated eIF2 α initiates the translation of a growing set of specific mRNAs that harbour one or more upstream open reading frames in their 5' untranslated regions⁵⁻⁸. One of these encodes ATF4, a stress-inducible transcription factor that activates the expression of genes involved in redox homeostasis, amino acid metabolism, protein synthesis, apoptosis and autophagy. ATF4 participates in a feedback loop to dephosphorylate eIF2 α to restore protein synthesis through upregulation of the protein phosphatase 1 (PP1) regulatory subunit GADD34 (REFS⁹⁻¹¹) (FIG. 1b). During ER stress, GADD34 forms a complex with PP1 to dephosphorylate eIF2 α ^{12,13}. Similarly to GADD34, expression of constitutive repressor of eIF2 α phosphorylation (CReP), which serves as a PP1 cofactor, confers PP1 specificity for phosphorylated eIF2 α . GADD34 and CReP are essential for recovery of protein synthesis as ER stress is resolved¹⁴.

◀ **Fig. 1 | The major UPR pathways initiated from the ER.** **a** | Adaptive unfolded protein response (UPR). Under endoplasmic reticulum (ER) stress, three major UPR branches are activated: (1) PERK phosphorylates eukaryotic translation initiation factor 2 subunit- α (eIF2 α), reducing the overall frequency of mRNA translation initiation. However, selective mRNAs, such as *ATF4* mRNA, are preferentially translated in the presence of phosphorylated eIF2 α . *ATF4* activates the transcription of UPR target genes encoding factors involved in amino acid biosynthesis, the antioxidative response, autophagy and apoptosis. (2) IRE1 α RNase splices *XBP1* mRNA, which encodes a potent transcription factor that activates expression of UPR target genes involved in ER proteostasis and cell pathophysiology. IRE1 α RNase can also cleave ER-associated mRNAs or non-coding functional RNAs, leading to their degradation through regulated IRE1-dependent decay (RIDD), which modulates the protein folding load, cell metabolism, inflammation and inflammasome signalling pathways. The IRE1 α cytosolic domain may also serve as a scaffold to recruit adaptor proteins, for example tumour necrosis factor receptor-associated factor (TRAF) family members, thereby activating inflammatory responses under non-canonical ER stress conditions. (3) *ATF6* transits from the ER to the Golgi apparatus, where it is cleaved by site-1 protease (S1P) and site-2 protease (S2P), yielding an active cytosolic *ATF6* fragment (*ATF6p50*). This fragment migrates to the nucleus, activating transcription of the UPR target genes involved in ER protein folding homeostasis and cell physiology. Additionally, unfolded or misfolded proteins accumulated in the ER lumen may be degraded through the proteasome-based ER-associated protein degradation (ERAD) machinery that is regulated by the *ATF6*-mediated and/or IRE1 α -X-box-binding protein 1 (XBP1)-mediated UPR branches. **b** | Proapoptotic UPR. Under ER stress, the PERK-eIF2 α UPR branch induces translation of *ATF4*, which can activate expression of the proapoptotic factor CCAAT/enhancer-binding protein homologous protein (CHOP) and *GADD34*. *GADD34* targets protein phosphatase 1 (PP1) to dephosphorylate eIF2 α and thereby restore mRNA translation. Constitutive repressor of eIF2 α phosphorylation (CReP) also serves as a cofactor to provide PP1 specificity for phosphorylated eIF2 α under ER stress. CHOP promotes ER stress-induced apoptosis by modulating *GADD34*, death receptor 5 (DR5) and the members of the BCL-2 or BH3-only family, including NOXA, BIM and PUMA, to stimulate protein synthesis and exacerbating protein folding defect. Furthermore, the IRE1 α UPR branch is involved in caspase 2-dependent, caspase 8-dependent or BAX/BAK-dependent apoptosis through RIDD or activation of TRAF2-JUN N-terminal kinase (JNK) signalling. The IRE1 α -mediated RIDD also regulates thioredoxin-interacting protein (TXNIP) to activate inflammasome-dependent and caspase 1-IL-1 β -dependent sterile inflammation, leading to apoptosis. In addition, Ca²⁺ release from the ER via inositol 1,4,5-trisphosphate receptor (IP₃R), which interacts with the ER-located antiapoptotic proteins BAX inhibitor 1 (BI-1) and GRINA, contributes to mitochondrial reactive oxygen species release and the activation of the BAX/BAK-dependent apoptosome. miRNA, microRNA.

UPR signalling through IRE1 α . IRE1 α , a type 1 ER transmembrane protein kinase/endoribonuclease, oligomerizes and autophosphorylates to elicit its RNase activity under ER stress^{15,16}. IRE1 α excises a small 26-nucleotide intron from the mRNA encoding the transcription factor X-box-binding protein 1 (XBP1) in metazoans and thereby shifts the translational open reading frame^{17–19}. This processing event results in the expression of an active XBP1 transcription factor (termed ‘XBP1s’ in metazoans for the spliced form) that upregulates genes involved in ER protein translocation, folding and secretion, as well as degradation of misfolded proteins³ (FIG. 1a).

In a process known as regulated IRE1-dependent decay (RIDD), IRE1 α can also cleave a small set of mRNAs or precursor microRNAs (miRNAs), leading to their degradation^{20–23}. RIDD may serve as an avenue to lower mRNA abundance and hence protein folding load in the ER. While the quantitative impact of RIDD on ER protein folding homeostasis remains to be determined, it was found to regulate multiple cellular processes by cleaving selected mRNAs in a cell type-dependent and stimulus-dependent manner^{20,21,24}. For both *XBP1* and RIDD-regulated mRNAs and precursor miRNAs, a common consensus CUGCAG

sequence motif within a stem-loop structure is a key feature of the IRE1 α cleavage site. IRE1 α was recently found to form complexes with the components of the translational and translocational machineries, including signal recognition particle RNA, ribosomal RNAs and transfer RNAs^{25,26}. However, whether the IRE1 α -small RNA complexes are of biological significance remains to be further investigated. Additionally, IRE1 α also associates with adaptor proteins to undergo crosstalk with other stress response pathways, including macroautophagy and the MAPK pathway²⁷.

UPR signalling through ATF6. On ER stress, full-length ATF6 (ATF6p90) transits from the ER to the Golgi apparatus, where it is cleaved by site-1 protease (S1P) and site-2 protease (S2P) to release a fragment containing a basic leucine zipper (bZIP) transcription factor, termed ‘ATF6p50’, that translocates to the nucleus to induce gene expression^{28,29} (FIG. 1a). ATF6p50 and XBP1s act in parallel, but also overlapping pathways to regulate transcription of genes encoding ER chaperones and enzymes that promote ER protein translocation, folding, maturation and secretion, as well as degradation of misfolded proteins^{25,30,31}. In addition, XBP1s and ATF6p50 promote ER and Golgi apparatus biogenesis to increase the secretory capacity of the cell under ER stress^{32–34}. Overall, the UPR represents a combination of signalling pathways that maintain ER proteostasis and sustain cell function under ER stress by adjusting the ER folding capacity in a dynamic manner.

Cell death control under ER stress

When the capacity of the UPR to sustain proteostasis is overwhelmed, cells enter apoptotic programmes⁴. Numerous mechanisms have been proposed to sensitize cells to ER stress-induced apoptosis, where a network of upstream events rather than a single pathway controls cell demise under irreversible ER damage (FIG. 1b).

ER stress triggers activation of the canonical apoptosis pathway, involving the conformational activation of the proapoptotic members of the BCL-2 family at the mitochondria, BAX and BAK, with concomitant assembly of the apoptosome and the activation of executor caspase 3. *BAX-BAK*-double-knockout cells and *Bax-Bak*-double-knockout mice are resistant to cell death on ER stress^{35,36}. However, the signals communicating ER stress to mitochondria to induce cell death are highly debated. BH3-only proteins of the BCL-2 family, including BIM, PUMA, NOXA and BID, are important factors that mediate ER stress-induced apoptosis in various cellular systems, where the activation mechanisms involve transcriptional upregulation and post-translational modifications of the proapoptotic BH3-only proteins^{37,38}. Triple-knockout cells for the BH3-only proteins BIM, PUMA and BID are fully resistant to ER stress-induced apoptosis, and the proapoptotic factor CHOP, which is regulated by ATF4 under ER stress, is able to induce the expression of BIM to trigger cell death^{39,40}. Further, ATF4 and CHOP activate genes encoding translational components to increase protein synthesis in stressed cells, leading to enhanced reactive oxygen species production and proteotoxicity

Signal recognition particle

A conserved, cytosolic ribonucleoprotein that recognizes and targets specific proteins to the endoplasmic reticulum membrane or plasma membrane.

Apoptosome

A quaternary protein complex, composed of mitochondrial cytochrome *c*, apoptotic protease activating factor 1 and deoxyadenosine triphosphate, formed in the process of apoptosis in response to cell death stimulus.

BCL-2 family

A protein family consisting of approximately 25 members that either promote or inhibit apoptosis by protein interactions that regulate mitochondrial outer membrane permeabilization.

Proteotoxicity

Adverse effects of aberrant or misfolded proteins that cause impairment of cell function.

Pre-B lymphocytes

A developmental stage of B lymphocytes defined by the expression of membrane μ -chains with surrogate light chains in the pre-B receptor, which is composed of two surrogate light chains and two immunoglobulin heavy chains expressed on the cell surface.

HSP70

A family of conserved ubiquitously expressed heat shock proteins that function as molecular chaperones or folding catalysts to assist protein folding or protect cells from stress.

and thus cell death^{11,41}. Although a molecular switch that transits cell adaptation to cell death programmes under irreversible ER stress has been proposed, the nature of this mechanism remains speculative. Indeed, cells stimulated with pharmacological ER stress exhibit simultaneous prosurvival and proapoptosis signals⁴². However, experiments performed with low doses of ER stress-inducing reagents demonstrated that the signalling events triggered by long-acting, low-dose ER stressors differ from those in cells subjected to short-term, highly cytotoxic ER stress⁴³. ER stress that falls below the threshold may not be able to elicit an effective PERK-dependent cell death programme⁴². Indeed, a recent study showed a new pathway that regulates ER stress-mediated cell death initiated by a hyaluronidase, an extracellular matrix component, that was independent of canonical UPR activation⁴⁴.

miRNAs also contribute to ER stress-induced apoptosis, where sustained RIDD degrades miRNAs that negatively control caspase 2 levels and thioredoxin-interacting protein (TXNIP), leading to sterile inflammation

or NACHT, LRR and pyrin domain-containing 3 (NLRP3) inflammasome activation and subsequent cell death^{22,45–47} (FIG. 1b). Hyperphosphorylated IRE1 α may deplete essential ER components through RIDD, such as the chaperone BiP, sensitizing cells to apoptosis²⁴. The activation kinetics of the PERK and IRE1 α signalling pathways may serve as a switch to trigger apoptosis. Under prolonged ER stress, attenuation of *XBP1* mRNA splicing inactivates a major UPR prosurvival avenue, whereas PERK–CHOP signalling persists⁴⁸. The activity of death receptor 5 (DR5) and that of the downstream initiator caspase 8 were shown to regulate apoptosis under ER stress^{49,50}. In this model, RIDD activity can degrade the mRNA encoding DR5, which is induced by CHOP⁵¹. Under sustained ER stress, RIDD is attenuated in certain cellular systems to allow increased expression of DR5 and activation of apoptotic programmes^{51,52}. Finally, Ca²⁺ release from the ER sets the threshold of stress signalling to transit into a proapoptotic response (FIG. 1b). Mitochondrial Ca²⁺ uptake sensitizes cells for cytochrome *c* release to trigger apoptosome formation through the opening of the permeability transition pore. A group of conserved cell death regulators of the TMBIM or BAX inhibitor 1 (BI-1) family⁵³, known as BI-1/TMBIM-6 and GRINA/TMBIM3, can attenuate ER stress-induced apoptosis by reducing Ca²⁺ release from the ER^{54,55}. Although a variety of mechanisms by which UPR regulates apoptosis have been proposed, the contribution of individual UPR pathways is modest, suggesting the existence of cell type-specific networks in determining cell fate under ER stress.

Box 1 | Discovery of the UPR

Numerous independent findings converged into the discovery of the tripartite mammalian unfolded protein response (UPR).

- In 1977, it was shown that glucose depletion in Rous sarcoma virus-transformed fibroblasts activated a specific set of genes, the products of which were termed 'glucose-regulated proteins' (GRPs)²²⁵.
- In 1983, an endoplasmic reticulum (ER) protein, which was named 'binding immunoglobulin protein' (BiP), was found to bind immunoglobulin heavy chains in pre-B lymphocytes before immunoglobulin light chains were expressed²²⁶.
- In the mid 1980s, BiP and GRP78 were found to be the same protein, a protein localized to the ER lumen and related to 70-kDa heat shock protein (HSP70)²²⁷.
- In 1989, it was found that factors that inhibit cell growth and induce DNA damage activate genes encoding proteins termed 'growth arrest and DNA damage-inducible proteins' (GADD proteins), many of which are GRPs²²⁸.
- At the same time, expression of a mutant influenza haemagglutinin that cannot fold and expression of an endogenous secreted protein prone to misfolding in the ER were shown to induce GRPs^{229,230}. Moreover, the binding of misfolded proteins to BiP was associated with GRP gene induction²³⁰.
- Together these studies showed that glucose deprivation-induced proteins (GRP gene induction) are the same as those proteins induced by accumulation of unfolded proteins in the ER (UPR gene induction) and connected the dots between protein misfolding and energy starvation. The findings provided evidence for the existence of signalling mechanisms that sense the accumulation of misfolded proteins in the ER that lead to the activation of genes among which many encode ER-resident proteins.
- Yeast genetics studies identified the most conserved UPR pathway as inositol-requiring 1 (Ire1p)-mediated splicing of *HAC1* (homologue of ATF and CREB) mRNA to produce a functional transcription factor for UPR gene induction^{231–233}.
- In 1993, the mammalian homologues of yeast Ire1p were identified as ERN1 (also known as IRE1 α), which is ubiquitously expressed, and ERN2 (also known as IRE1 β) with intestinal and lung epithelial cell-restricted expression^{234,235}.
- In 2001, the metazoan Hac1 homologue was identified as X-box-binding protein 1 (XBP1), for which IRE1 α initiates unconventional *XBP1* mRNA splicing to produce a functional transcription factor^{17–19}. XBP1 was discovered as a transcription factor in B cells more than 10 years before it was identified as a target of IRE1 α ²³⁶.
- In 1998–1999, two additional UPR transducers were identified as double-stranded RNA-activated protein kinase-like ER kinase (PERK) and activating transcription factor 6 (ATF6)^{9,237,238} in metazoans. The tripartite UPR restores ER proteostasis by modulating the expression of genes involved in most aspects of the secretory pathway.

Stress sensing mechanisms

Two main models have been proposed to describe the ER stress sensing mechanisms by IRE1 α and PERK: a direct recognition model and an indirect model where the ER stress sensing process is directly coupled to the folding machinery^{56,57} (FIG. 2). Importantly, the luminal domains that sense ER protein misfolding are structurally conserved. Indeed, replacement of the luminal domain of IRE1 α (termed 'Ire1p' in yeast) with the luminal domain of mammalian PERK, for which there is no yeast homologue, confers ER stress activation of the UPR⁵⁸.

In the indirect model, IRE1 α monomers are prone to form dimers, resulting in transphosphorylation of the kinase domain, followed by a conformational change in the RNase domain that activates canonical UPR signalling⁴. Twenty years ago, correlative data suggested that ER stress sensors are maintained in an inactive state under resting conditions through their physical interaction with the ER chaperone BiP⁵⁶ (FIG. 2a). On ER stress, BiP associates with unfolded or misfolded proteins in the ER, thereby releasing PERK and IRE1 α to allow their homodimerization or the translocation of ATF6 to the Golgi apparatus through COPII vesicles^{59,60}. However, in yeast, BiP binding to Ire1p may be dispensable to activate the UPR⁶¹, as mutations that abrogate the BiP–Ire1p interaction do not significantly affect the ER stress sensing process⁶² (reviewed in⁵⁷). Alternatively, BiP binding was suggested to participate in the attenuation of UPR signalling under prolonged ER stress to deactivate Ire1p and sequester its inactive form, contributing to the dissociation of Ire1p

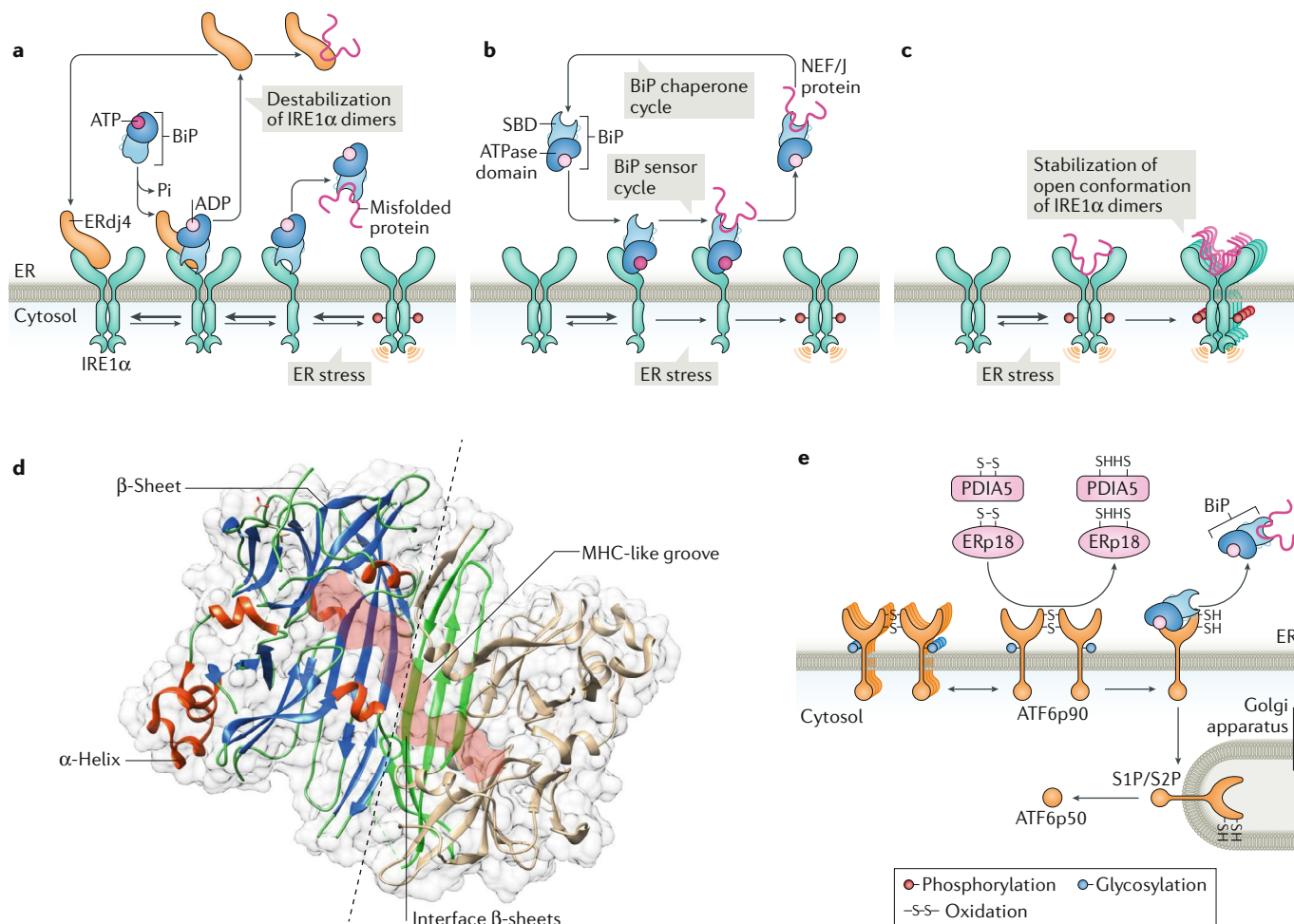


Fig. 2 | Regulation of IRE1 α and PERK signalling. **a** | Indirect endoplasmic reticulum (ER) stress sensing model. In resting cells, the ER stress sensor IRE1 α is maintained in an inactive state through its association with the ER chaperone BiP (also known as GRP78). On accumulation of unfolded proteins, BiP preferentially binds to unfolded protein peptides, thereby releasing the ER stress sensor to allow its spontaneous dimerization and activation. In this model, BiP has the capacity to destabilize IRE1 α dimers and maintain the unfolded protein response transducer in an inactive state. In addition, the BiP co-chaperone ERdj4 is required for BiP binding to IRE1 α and repression of IRE1 α activation. **b** | Alternatively, BiP might bind misfolded proteins through the substrate-binding domain (SBD), which transduces a signal to the ATPase domain to release the repressive interaction over IRE1 α and PERK. **c** | A direct recognition model proposes that unfolded proteins bind directly to the luminal domains of IRE1 α , facilitating the assembly of highly ordered IRE1 α clusters. This may orient the cytosolic region of the dimer to create a ribonuclease site and generate an mRNA docking region. **d** | The 3D structure of the ER luminal domain of yeast Ire1p is shown, depicting the dimeric interphase (dashed line) and the major histocompatibility complex (MHC) class-I like groove (pink surface), where misfolded peptides might bind. Protein Data Bank accession number 2BE1. **e** | ATF6 is regulated by its glycosylation and redox state, in addition to the binding of various disulfide isomerases, including PDIA5 and ERp18. ATF6p90, full-length AFT6; J protein, J-domain protein; NEF, nucleotide exchange factor; S1P, site-1 protease; S2P, site-2 protease.

clusters^{61,63}. By contrast, mutagenesis studies with mammalian cells suggested that disruption of the BiP–IRE1 α interaction results in basal UPR activation even in the absence of ER stress⁵⁹. Recent studies have reinforced the idea that BiP plays a major role in ER stress sensing. ERdj4 (also known as DNAJB9) was identified as an ER luminal co-chaperone required for the formation of the BiP–IRE1 α complex⁶⁴. In this model, ERdj4 associates with IRE1 α and recruits BiP by stimulating ATP hydrolysis (FIG. 2a). Then unfolded proteins compete for BiP to favour a ‘default’ dimeric and active state of IRE1 α ⁶⁴. Thus, binding of ERdj4 and BiP has the capacity to destabilize IRE1 α dimers to maintain them in an inactive monomeric state⁶⁵.

In an alternative model, BiP has a dual function in the regulation of the UPR: it directly senses ER stress by binding to unfolded or misfolded protein peptides via its substrate-binding domain and then transduces this information to IRE1 α and PERK through the ATPase domain, triggering the dissociation of the sensor–BiP complex^{66,67} (FIG. 2b). These observations implicated BiP as a sensor of ER stress and suggested an allosteric mechanism for UPR induction. A follow-up study suggested that the physical interaction of BiP with the luminal domains of IRE1 and PERK may switch BiP function from being part of a chaperone cycle that operates as an ER stress sensor⁶⁸. This switch might prevent the

COPII

A type of vesicle coat protein that transports newly synthesized proteins from the endoplasmic reticulum to the Golgi apparatus.

binding of BiP to its co-chaperones and guanine nucleotide exchange factors, in addition to preventing ATPase stimulation.

The 3D structure of the ER luminal domain of yeast Ire1p contains a binding pocket that extends across a dimerization interface reminiscent of the peptide-binding groove of the major histocompatibility complex (MHC)¹⁵. This observation led to the hypothesis that unfolded or misfolded proteins may directly bind to the luminal domain of Ire1p to promote the formation of stable dimers and oligomers (FIG. 2c,d). Mutagenesis analysis of the Ire1p groove suggested that yeast Ire1p binds peptides that have amino acid patterns reminiscent of those predicted to occupy internal positions in folded proteins⁶⁹. Additional studies suggested a two step model where BiP dissociation from Ire1p is needed for Ire1p to form clusters, which then bind misfolded proteins for UPR activation⁷⁰. While similar conclusions were inferred from a recent biochemical characterization of the ER luminal domain of IRE1 α , IRE1 β and PERK^{71–74}, this sensing mechanism model remains to be validated in living cells. Importantly, IRE1 α forming a peptide-binding groove, as observed in the crystal structure of yeast Ire1p, was not supported by the X-ray structure of the luminal domain of human IRE1 α . The X-ray structure suggests that the MHC class I-type groove is not exposed to solvent, which is incompatible with the binding of a protein peptide¹⁶. In addition, other studies failed to detect the binding of misfolded proteins to the ER luminal domain of IRE1 α in vitro⁵⁹. Whether direct peptide binding to IRE1 α can activate its function remains an open question, but it is possible that under ER stress the UPR is activated by a combination of both BiP-dependent and BiP-independent recognition mechanisms. Finally, a recent study suggested that DR5 signals through its intracellular accumulation by directly recognizing unfolded proteins in the ER lumen, triggering apoptosis⁷⁵. Thus, DR5 may operate as an ER stress sensor to engage a terminal UPR.

Recent studies revealed that additional ER-resident factors are involved in the activation of UPR transducers. The collagen carrier HSP47 activates IRE1 α signalling under mild ER stress through a physical interaction⁷⁶. HSP47 directly binds to the ER luminal domain of IRE1 α , displacing the negative regulator BiP from the complex to facilitate IRE1 α oligomerization⁷⁶. However, HSP47 does not affect the activation of PERK, suggesting its role in selective regulation of IRE1 α . As collagens are the major cargo of the secretory pathway, the involvement of HSP47 in IRE1 α activation suggests a coupling of the secretion pathway with the UPR to adjust the ER protein folding capacity. In agreement with this concept, collagen 6a was identified as a major RIDD target²⁰, and XBP1s was shown to induce the expression of the putative collagen carrier TANGO1 (REF.⁷⁷). All these observations implicate the existence of a tight association between collagen biogenesis and the UPR.

Protein disulfide isomerases (PDIs) are a group of foldases that catalyse the formation and isomerization of disulfide bonds in ER client proteins. PDIA6 was shown to attenuate IRE1 α and PERK signalling under prolonged ER stress through an interaction with specific

oxidized cysteines in the ER lumen of IRE1 α or PERK in cultured cells⁷⁸. However, PDIA6 expression enhanced IRE1 α signalling in response to disruption of ER Ca²⁺ homeostasis⁷⁹. An unbiased interactome screening for ATF6 identified several PDIs as binding partners⁸⁰. At the functional level, PDIA5 and ERp18 enhance ATF6 activation, possibly through a direct interaction^{80,81} (FIG. 2e). Altogether, available data suggest that the mechanism for ER stress sensing is highly complex and combines the protein folding machinery and UPR signal transduction molecules.

In addition, IRE1 α and ATF6 can sense ER membrane lipid bilayer alterations, without the involvement of the ER luminal domain for signalling^{82–85}. The transmembrane domains of IRE1 α and ATF6 are required to respond to such membrane aberrancies^{83,85,86}. In yeast, an amphipathic α -helix in Ire1p may sense altered ER membrane properties⁸⁴. Importantly, the transcriptional responses driven by IRE1 α under ER stress or lipid bilayer stress are different⁸⁷, suggesting a complex integration of local perturbations to selective adaptive programmes. These findings support the notion that multiple signals may cause activation of UPR sensors in a non-canonical manner.

UPR regulation

There is increasing evidence that the proximal UPR transducers IRE1 α , PERK and ATF6 can be selectively modulated by binding to specific factors or through post-translational modifications that modify their activities and/or protein stability. Thus, the threshold of ER stress that triggers the activation of each UPR sensor is determined by specific interactomes, regulating UPR signalling amplitude, kinetics and its impact on cell physiology. Recent advances have increased our understanding of how activators, repressors and post-translational modifiers function together to fine-tune UPR signalling. Although some cases rely on single reports or artificial overexpression systems, they introduce a new layer of complexity in UPR regulation that cannot be ignored.

Temporal and selective regulation of UPR transducers.

Several studies suggest that the activity of all three UPR stress sensors is modulated by different specific factors. However, most of them focused on IRE1 α as it is the most conserved of the UPR stress sensors (FIG. 3; TABLE 1; Supplementary Table 1).

Multiple laboratories identified positive regulators of IRE1 α signalling that function by controlling IRE1 α dimerization, oligomerization, phosphorylation and dephosphorylation, impacting the amplitude and kinetics of the signalling response. For example, BI-1 was the first identified negative regulator of IRE1 α , which was found to attenuate IRE1 α signalling under prolonged ER stress by forming a protein complex with the cytosolic domain of IRE1 α ^{88–91}. Fortilin inhibits IRE1 α activity in a similar manner, by directly interacting with phosphorylated IRE1 α , attenuating the UPR and reducing the susceptibility of cells to apoptosis⁹². Apoptosis regulators were also reported to directly interact with IRE1 α to modulate its activity. Several members of the BCL-2 family can physically interact with IRE1 α to enhance the amplitude of

Collagens

The most abundant structural proteins in the extracellular matrix in connective tissues in mammals.

Foldases

Molecular chaperones that support the folding of nascent protein peptides in the endoplasmic reticulum.

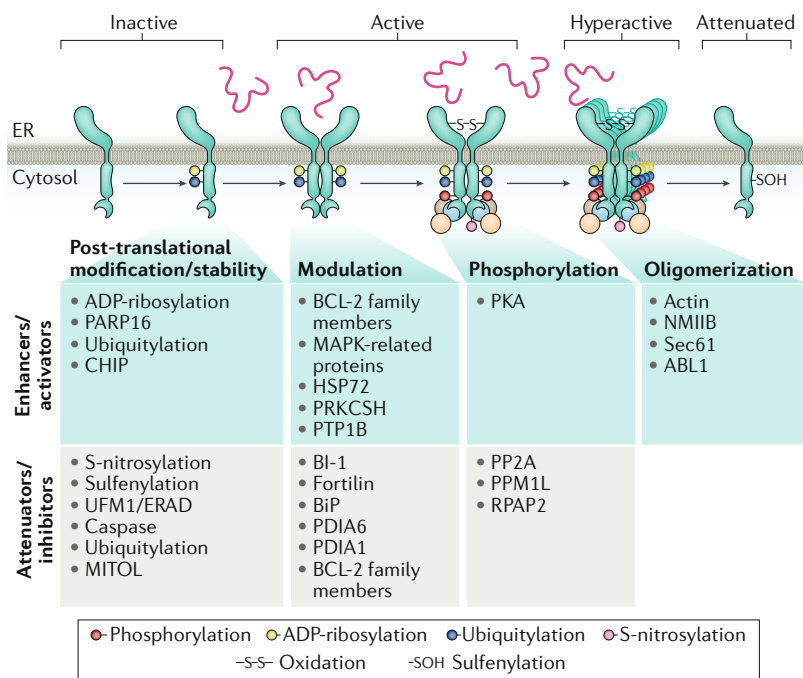


Fig. 3 | Regulation of IRE1α signalling through protein–protein interactions and post-translational modifications. Several proteins can form a complex with IRE1α. A schematic representation is presented for negative and positive regulators of IRE1α signalling (attenuators and enhancers of unfolded protein response signalling). The effects of these regulators at different stages of the IRE1α signalling process are indicated, including IRE1α dimerization, oligomerization and phosphorylation. In addition, the occurrence of several post-translational modifications that could modify the stability or the activity of IRE1α is indicated. BI-1, BAX inhibitor 1; ER, endoplasmic reticulum; ERAD endoplasmic reticulum-associated protein degradation; NMIIB, non-muscle myosin heavy chain IIB; PKA, protein kinase A; PP2A, protein phosphatase 2A.

IRE1α downstream outputs, thereby sustaining the UPR signalling in both cultured cells and animal models^{35,93}. Similarly, several components of the MAPK pathway can selectively modulate IRE1α activity through interacting with IRE1α (reviewed in⁹⁴). Moreover, interactome analyses have identified additional regulators of IRE1α (Supplementary Table 1). For example, the non-muscle myosin heavy chain IIB protein forms a specific complex with IRE1α, promoting the formation of larger IRE1α clusters⁹⁵ (FIG. 3). The tyrosine-protein kinase ABL1 is required to stabilize IRE1α oligomers, shifting the equilibrium towards a hyperactivated state that more likely catalyses RIDD, triggering cell death⁹⁶.

IRE1α also forms a complex with Sec61, a core component of the translocon machinery²⁶. Sec61 can recruit unspliced *XBP1* (*XBP1u*) mRNA through a ribosomal arrest sequence to bring *XBP1u* mRNA to the ER membrane in a signal recognition particle-dependent manner to increase the splicing efficiency of the *XBP1* mRNA^{18,97,98}. Although the protein encoded by the *XBP1u* mRNA is highly unstable and not detectable as it is rapidly degraded by the proteasome, it contains a membrane-interacting region that attaches to the ER membrane and brings the *XBP1u* mRNA close to IRE1α⁹⁹. During this process, translation of the *XBP1u* mRNA is briefly paused, which allows the *XBP1u* mRNA–ribosome–nascent chain complex to be targeted to the protein-conducting channel on the ER

membrane that is formed by Sec61, where *XBP1u* mRNA is efficiently processed by IRE1α^{97,100,101}.

Although less explored, the activities of PERK and ATF6 are modulated by selective binding partners. For example, p58^{IPK}, the small GTPase Rheb and transducin β-like protein 2 (TBL2) bind PERK to regulate the amplitude of PERK-mediated signalling responses at the level of eIF2α phosphorylation^{102–104}. More systematic interactome screenings are needed to define the composition of UPR stress sensor-containing complexes and the dynamic nature of their assembly/disassembly under ER stress and in physiological conditions.

Post-translational regulation of the UPR. Phosphorylation of IRE1α and PERK is a well-validated crucial regulatory mechanism for the activation of the UPR. Structural and biophysical studies have shown that IRE1α undergoes homodimerization and transautophosphorylation that lead to a conformational change that promotes IRE1α RNase activity^{105,106}. Phosphorylation of IRE1α occurs in three regions: linker, activation loop and RNase domain¹⁰⁷. Phosphorylation of IRE1α on the activation loop enhances the accessibility of RNA substrates to the IRE1α RNase catalytic pocket and thereby facilitates IRE1α-mediated *XBP1* mRNA splicing or cleavage of RIDD substrates^{106,107} (FIG. 1a). IRE1α can also be phosphorylated independently of ER stress at Ser724 by protein kinase A (PKA), as reported in hepatocytes in the context of glucagon biosynthesis¹⁰⁸ and in neurons stimulated by the growth factor brain-derived neurotrophic factor (BDNF)^{109,110}. Moreover, the levels of IRE1α phosphorylation are negatively controlled by various phosphatases, including protein phosphatase 2A^{111,112} (which is recruited to the ER membrane through interaction with IRE1α) or ER membrane-targeted protein phosphatase PP2Ce¹¹³ (FIG. 3). It has also been reported that in cultured cells under ER stress, oligomerization of the ER luminal domain of PERK promotes PERK transautophosphorylation of the C-terminal cytoplasmic kinase domain at multiple residues to boost its kinase activity to phosphorylate eIF2α¹¹⁴. However, these studies are based on cell assays for which physiological significance needs to be confirmed in vivo.

Although other post-translational modifications of ER stress sensors or transcriptional activators are less studied, emerging evidence suggests they play an important part in the regulation of UPR signalling. Metabolic challenges that increase the cellular levels of nitric oxide can reduce IRE1α RNase activity in the liver by inducing S-nitrosylation, a modification that involves the covalent attachment of nitrogen monoxide to target proteins^{115,116}. IRE1α contains two conserved cysteine residues within the RNase domain that can be S-nitrosylated and thereby block IRE1α RNase activity under metabolic inflammation¹¹⁵. Furthermore, S-nitrosylation of IRE1α and PERK was implicated in cell-based models of Parkinson disease¹¹⁷. Whereas S-nitrosylation of IRE1α inhibits its ribonuclease activity, S-nitrosylation of PERK can activate its kinase domain and downstream phosphorylation of eIF2α¹¹⁷. Redox changes may induce cysteine sulfenylation in the IRE1α kinase activation loop, reducing its activity¹¹⁸. Other post-translational modifications also regulate the function of IRE1α in some experimental

Translocon

A complex of proteins associated with the translocation of nascent protein peptides into the luminal space of the endoplasmic reticulum from the cytosol within a cell.

Table 1 | Selected IRE1 α -binding partners and regulators

Protein	Function	Endogenous complex	Overexpressed IRE1 α with (yes) or without (no) tag	Overexpressed interactor with (yes) or without (no) tag	In vitro binding
AIP1	MAPK signalling	Yes	–	–	–
BAK	Apoptosis	Yes	–	–	Yes
BAX	Apoptosis	Yes	–	–	Yes
BIM	Apoptosis	Yes	–	–	Yes
BI-1	Apoptosis	Yes	–	–	Yes
BID	Apoptosis	–	No	Yes	Yes
BiP	Chaperone	Yes	–	–	Yes
ABL1	Cell signalling, DNA damage, apoptosis	–	Yes	No	–
CHIP	Ubiquitin system	Yes	–	–	–
ER protein-targeting machineries	Protein synthesis	–	Yes	–	–
Filamin A	Actin cytoskeleton regulation	Yes	–	–	Yes
Fortilin	Cell survival	Yes	–	–	Yes
HSP47	Collagen folding and trafficking	Yes	–	–	Yes
HSP90	Chaperone	Yes	–	–	–
HSP70	Chaperone	–	Yes	No	Yes
HRD1	ERAD	Yes	–	–	–
IP3R1–IP3R3	Calcium channel	–	Yes	No	Yes
JAB1	MAPK signalling	–	Yes	Yes	–
JIK	MAPK signalling	–	Yes	Yes	–
Myosin heavy chain IIB	Actin cytoskeleton regulation	–	Yes	Yes	–
NMI	Cell signalling	–	No	Yes	–
Optineurin	Autophagy	Yes	–	–	–
PARP16	Protein modification	–	Yes	Yes	–
PDIA1	Disulfide bond formation	Yes	–	–	Yes
PDIA6	Disulfide bond formation	Yes	–	–	Yes
PPM1L	Phosphatase	–	Yes	Yes	–
PKA	Kinase	–	–	–	–
PKC	Kinase	Yes	–	–	Yes
PSEN1	Protein processing	–	Yes	No	–
PUMA	Apoptosis	Yes	–	–	Yes
RACK1	Cell signalling	Yes	–	–	–
Sec61	Translocon	–	Yes	Yes	Yes
SIG-1R	Chaperone	–	Yes	Yes	Yes
TRAF2	Adapter protein, cell signalling	Yes	–	–	–
UFBP1	UFM1 conjugation system	–	Yes	Yes	–
Ubiquitin D	Ubiquitin system	Yes	–	–	–
USP14	Ubiquitin system	Yes	–	–	–
Yip1A	ER–Golgi apparatus trafficking	Yes	–	–	–

Detected protein interactions with IRE1 α are listed, whether between endogenous proteins or between overexpressed proteins (tagged or not tagged). If protein complexes were validated with endogenous proteins, experiments performed with overexpression systems are omitted from this table. The complexes that were validated in vitro with use of purified proteins are indicated. See Supplementary Table 1 for further details and references. ER, endoplasmic reticulum; ERAD, endoplasmic reticulum-associated protein degradation.

systems. IRE1 α ubiquitylation is catalysed by the E3 ligase CHIP, enhancing JUN N-terminal kinase activation in cultured cells¹¹⁹. The stability of IRE1 α can be controlled by several pathways, including the ubiquitin-fold modifier 1 (UFM1) system¹²⁰, the selective autophagy receptor optineurin¹²¹ and ERAD¹²². ATF6 activation is dependent on its glycosylation status and reduction of luminal cysteines¹²³. A recent report suggested that caspases can cleave IRE1 α and attenuate its signalling under prolonged ER stress¹²⁴. The stability of ATF6 is regulated by the XBP1-target gene *WFS1* through proteasome-mediated degradation¹²⁵.

UPR functions beyond ER proteostasis

In the past 5 years, many studies have reported that UPR components have multiple functions in biological processes that are beyond maintenance of ER proteostasis. The identification of novel binding partners of UPR stress sensors (TABLE 1; Supplementary Table 1) has provided mechanistic insights, indicating that the formation of distinct protein complexes serves as a platform for interorganellar communication and signalling crosstalk to regulate mitochondrial bioenergetics, cytoskeleton dynamics and membrane contacts. Moreover, the finding of non-canonical activation mechanisms of ER stress sensors that depend on signalling events downstream of plasma membrane receptors has revealed functions of UPR components in cell differentiation, metabolism, neuronal plasticity and angiogenesis. These studies suggest a new concept that the ER stress sensors are involved in cell physiology through mediating non-canonical UPR responses (FIG. 4).

Membrane contact sites and bioenergetics. To maintain cellular homeostasis, ER and mitochondria exchange molecular signals by a physical association between the two types of organelles (BOX 2). This physical association forms specific microdomains known as mitochondria-associated membranes (MAMs), which are stable structures that are found in all eukaryotic cells and cover 2–5% of the total mitochondrial surface¹²⁶. These close membrane contacts facilitate the transfer of Ca²⁺ between the two types of organelles by generating microdomains of localized Ca²⁺ spikes released from the ER through inositol 1,4,5-trisphosphate receptors (FIG. 4a). Mitochondrial Ca²⁺ uptake modulates cellular metabolism by activating the tricarboxylic acid cycle to produce ATP. Several research groups have reported the presence of PERK or IRE1 α in MAMs¹²⁷, which was recently validated in vivo at the level of endogenous proteins¹²⁸. PERK was found to facilitate the tethering of ER to mitochondria at MAMs, leading to increased production of reactive oxygen species in response to ER stress to promote cell death¹²⁷. Another study suggested that PERK and the ER-mitochondrial tether protein mitofusin 2 form a complex that attenuates UPR signalling¹²⁹. The localization of IRE1 α at MAMs is stabilized by σ_1 receptor (also known as SIG-1R), which may enhance UPR signalling¹³⁰. The mitochondrial E3 ubiquitin ligase MITOL (also known as MARCHF5), localized at the outer mitochondrial membrane, was recently shown to attenuate IRE1 α oligomerization and

thereby inhibit ER stress-induced apoptosis by catalysing the ubiquitylation of IRE1 α at MAMs¹³⁰.

IRE1 α was identified as a basal regulator of mitochondrial bioenergetics¹²⁸. IRE1 α regulates the transfer of Ca²⁺ from the ER to mitochondria, acting as a scaffold that docks the inositol 1,4,5-trisphosphate receptor at MAMs through physical interaction¹²⁸. IRE1 α deficiency resulted in a severe metabolic stress state and impacted the tricarboxylic acid cycle in cell culture and in the livers of mice at basal levels. An interactome screening identified filamin A as a strong PERK binding partner, and this interaction was shown to regulate the association between the ER and plasma membranes, enhancing Ca²⁺ uptake by cells¹³¹. These observations suggest that the subcellular distribution of PERK and IRE1 α at ER subdomains is important for signalling optimization and crosstalk with other cellular processes to control Ca²⁺ signalling, metabolism and cell fate under ER stress.

Cytoskeleton dynamics. The actin cytoskeleton and non-muscle myosin IIB are required for the formation of IRE1 α clusters^{95,132}, but until recently it was unclear whether the UPR has reciprocal effects on the cytoskeleton. In two recent unbiased interactome screenings, filamin A was identified as the major IRE1 α binder^{133,134} (FIG. 4b). Filamin A mediates the crosslinking of actin filaments and regulates cytoskeleton dynamics, including the formation of lamellipodia and filopodia, thus facilitating cell migration, adhesion and mechanotransduction. IRE1 α regulates filamin A function through a physical interaction independent of its UPR-related enzymatic activities via a proline rich region in the IRE1 α distal C-terminal region¹³³. The formation of the IRE1 α –filamin A complex dramatically impacts cell migration and cell shape in various cellular and animal models¹³³. The interaction between PERK and filamin A, which affects Ca²⁺ uptake, was also shown to affect cytoskeletal dynamics and cell migration¹³¹.

Plasma membrane receptors and signalling crosstalk.

Several studies have identified non-canonical ways of engaging UPR signal transducers in an ER stress-independent manner through signalling downstream of specific receptors (FIG. 4c). For example, optimal secretion of proinflammatory cytokines in macrophages is mediated by XBP1s, following IRE1 α activation by Toll-like receptor signalling^{112,135}, whereas it represses ATF4–CHOP expression^{136,137}. Toll-like receptors can also trigger IRE1 α activation and generation of functional XBP1s in myeloid leukocytes, which sustains expression of prostaglandin-endoperoxide synthase 2 (PTGS2; also known as COX2) and prostaglandin E synthase (PTGES, also known as MPGES1), two rate-limiting enzymes that control prostaglandin biosynthesis and behavioural pain responses in mice¹³⁸.

IRE1 α signalling can be modulated by fluctuations in glucose and glucagon levels, involving its phosphorylation via signalling events including PKA and the binding of the adapter protein RACK1 to recruit protein phosphatase 2A in pancreatic β -cells^{111,139}. The UPR promotes angiogenesis downstream of vascular endothelial growth factor receptor through phospholipase Cy1 (PLCy) and

Inositol

1,4,5-trisphosphate receptors

Endoplasmic reticulum membrane glycoprotein complexes that act as the Ca²⁺ release channels within cells.

Lamellipodia

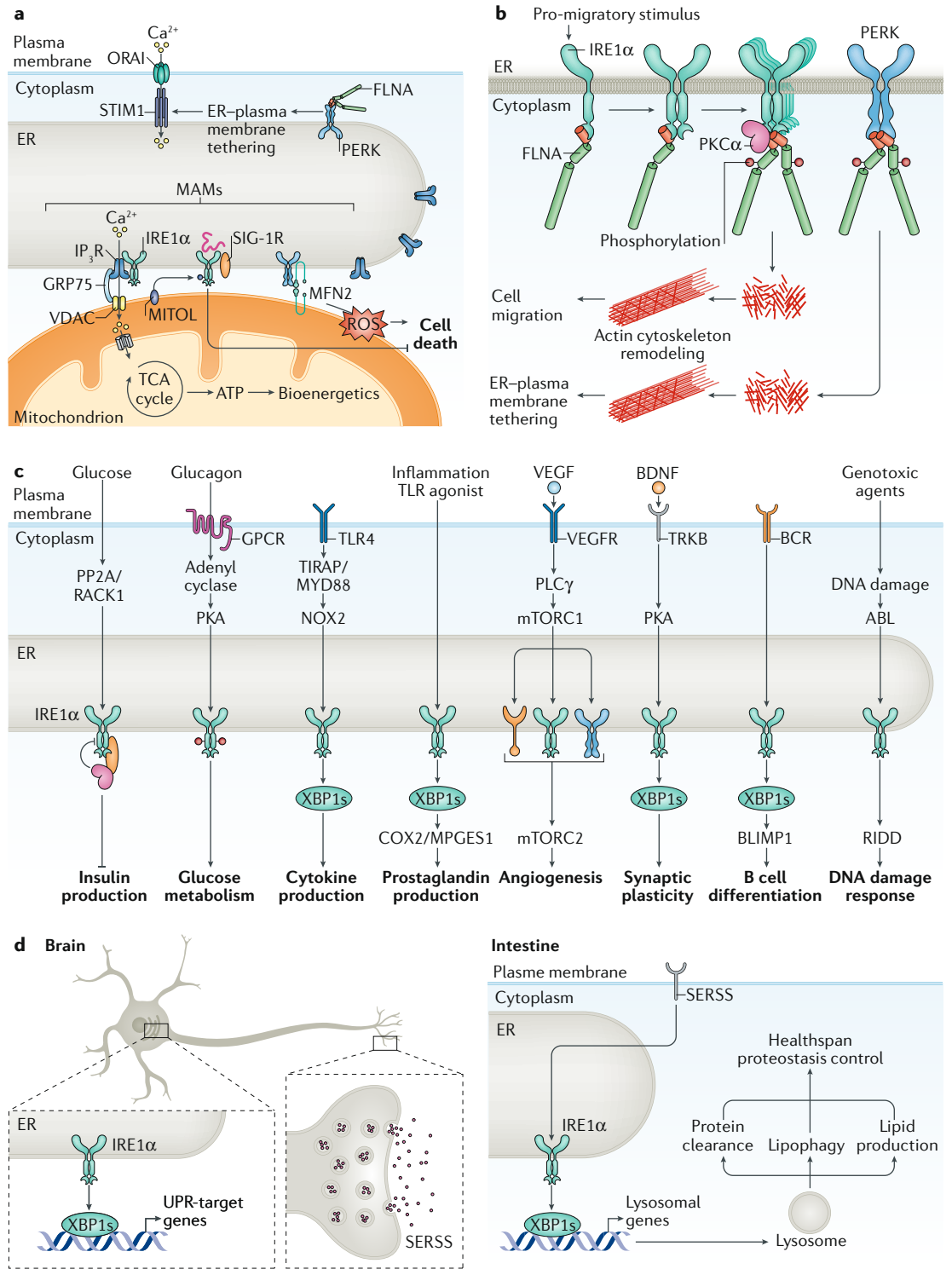
Thin plates of cytoplasm produced by cytoskeletal protein actin on the leading edge of a cell.

Filopodia

Thin, actin-rich cytoplasmic projections that extend beyond the edge of lamellipodia in cells.

Phospholipase Cy1

(PLCy). Catalyses the formation of inositol 1,4,5-trisphosphate and diacylglycerol from phosphatidylinositol 4,5-bisphosphate and plays an important role in signal transduction of receptor-mediated tyrosine kinase activators.



the mTOR pathway, independently of ER stress¹⁴⁰. In neurons, binding of BDNF to its receptors triggers the activation of the IRE1α-XBP1 pathway through PKA activation to induce neuronal differentiation and dendritic outgrowth, contributing to synaptic plasticity^{109,110}. XBP1s expression is a differentiation-dependent event in plasma B cells rather than a response to increased immunoglobulin secretion^{141,142}. These selected examples illustrate an emerging concept where UPR components may serve important cellular functions as signal transduction

modules in processes that are independent of protein folding stress. However, the detailed mechanisms explaining alternative ways of activation of ER stress sensors need further investigation.

Cell-non-autonomous control of organismal proteostasis. Maintenance of organismal homeostasis depends on the integration of external and systemic signals and ability to sense cellular perturbations in order to trigger adaptive responses. Studies in model organisms

◀ Fig. 4 | **ER stress-independent functions of the UPR.** **a** | IRE1 α and PERK localize to endoplasmic reticulum (ER)–mitochondrion contact sites that form structures known as mitochondria-associated membranes (MAMs). PERK regulates reactive oxygen species (ROS) propagation under ER stress at MAMs, in addition to affecting ER-to-mitochondrion tethering through the interaction with mitofusin 2 (MFN2). PERK also associates with filamin A (FLNA) to regulate ER–plasma membrane contact sites and calcium entry into the cell through ORAI–stromal interaction molecule (STIM) channels. The activity and stability of IRE1 α is differentially regulated at MAMs through interaction with σ_1 receptor (SIG-1R). IRE1 α also docks the inositol 1,4,5-trisphosphate receptor (IP₃R) at MAMs to control the transfer of calcium into the mitochondria and the activation of the tricarboxylic acid (TCA) cycle to produce ATP. **b** | Cell migration is regulated by IRE1 α and PERK through the direct binding of filamin A, a regulator of actin cytoskeleton dynamics. IRE1 α recruits protein kinase C α (PKC α) as a scaffold to trigger filamin A phosphorylation, leading to its activation as a crosslinker of actin filaments. **c** | Plasma membrane receptor signalling pathways undergo crosstalk with unfolded protein response (UPR) signalling by leading to the activation of UPR sensors in an ER stress-independent manner. In addition, genotoxic stress might trigger a non-canonical activation of IRE1 α to trigger regulated IRE1-dependent decay (RIDD) and modulate the DNA damage response. **d** | Cell-non-autonomous UPR activation. Expression of spliced X-box-binding protein 1 (XBP1s) in neurons signals for distal tissues to activate IRE1 α –XBP1 and drive proteostatic changes that control healthspan and lifespan in simple model organisms such as *Caenorhabditis elegans*. XBP1s regulates different cellular processes to extend healthspan, including lipophagy, lysosomal function, proteostasis and lipid production. Neurotransmitter release mediates non-autonomous signalling downstream of XBP1s, suggesting that a secreted ER stress signal (SERSS) promotes ER stress resistance and longevity. BCR, B cell receptor; BDNF, brain-derived neurotrophic factor; GPCR, G protein-coupled receptor; mTORC1, mTOR complex 1; PKA, protein kinase A; PLC γ , phospholipase C γ ; PP2A, protein phosphatase 2A; TLR, Toll-like receptor; UFM1, ubiquitin-fold modifier 1, VDAC, voltage-dependent anion-selective channel; VEGFR, vascular endothelial growth factor receptor.

implicated a new paradigm in which a neuronal UPR orchestrates the global maintenance of ER proteostasis at the organismal level in a cell-non-autonomous manner¹⁴³ (FIG. 4d).

The overexpression of XBP1s in the hypothalamus protected animals against diet-induced obesity, increasing insulin sensitivity, increasing energy expenditure and reducing gluconeogenesis¹⁴⁴. These effects were attributed, in part, to an increase in *XBP1* mRNA splicing in the liver. Studies in invertebrates suggest that a loss of ER proteostasis contributes to ageing¹⁴⁵. Overexpression of XBP1s in neurons of *Caenorhabditis elegans* resulted in a dramatic ~30% extension of lifespan¹⁴⁶. Unexpectedly, these beneficial effects of neuronal XBP1s were mapped to the intestine, where the IRE1 α –XBP1 branch was activated in a cell-non-autonomous manner^{143,146}. In *C. elegans*, XBP1s activates transcription of lysosomal genes and may assist in clearing abnormally folded proteins¹⁴⁷, in addition to regulating lipid metabolism and lipophagy¹⁴⁸. A recent study in the same model organism also suggested that the expression of XBP1s in glial cells triggers cell-non-autonomous responses to engage the IRE1 α –XBP1 pathway and protect against proteotoxicity and extend lifespan¹⁴⁹. The UPR was discovered as a key mediator of the positive effects of dietary restriction in ageing^{148–150}. Lastly, intestinal stem cells in flies subjected to dietary restriction triggered cell-non-autonomous activation of IRE1 α and lipogenesis¹⁵¹. Together these studies depict a new layer of complexity, in which the neuronal UPR integrates stress signals to adjust global proteostasis and sustain organismal function. However, the actual role of the neuronal UPR in mammalian ageing remains to be established.

DNA damage response. The molecular intersection between homeostatic systems that maintain both genome integrity and proteostasis is poorly understood. A recent study reported that the selective activation of IRE1 α under genotoxic stress modulates repair programmes and sustains cell survival under DNA damage. Unexpectedly, genotoxic agents exclusively engaged the RIDD activity in the absence of *XBP1* mRNA splicing¹⁵². This function of IRE1 α degrades mRNAs involved in the DNA damage response, impacting DNA repair, cell cycle arrest and cell death. The activation of RIDD under genotoxic stress was mediated by the recruitment of the ABL1 kinase to favour the oligomerization of IRE1 α and catalyse RIDD. The protective role of IRE1 α under DNA damage was validated in fly and mouse models¹⁵². Another report suggested that XBP1u has a role in regulating the levels of p53, a central regulator of the DNA damage response, by promoting its ubiquitylation and degradation¹⁵³. These findings suggest a coordination between the pathways that maintain genome stability and ER proteostasis.

ER stress in physiology and disease

Altered ER proteostasis and abnormal UPR signalling have been implicated in the occurrence of a variety of human diseases, including cancer, neurodegeneration, metabolic diseases and chronic inflammation. In addition, the development of small molecules and gene therapy strategies to manipulate selective UPR components has illustrated the potential of the ER proteostasis network as a target for disease intervention (FIG. 5). In this section, we discuss selected examples depicting the emerging contribution of the UPR to a variety of human diseases.

Metabolism. As the ER is a central compartment for both protein folding and lipid biosynthesis, the UPR is intrinsically associated with hepatic lipid homeostasis in the context of metabolic disease. The IRE1 α -mediated UPR is required to protect the liver from stress-induced hepatic lipid accumulation in response to pharmaceutical challenges or overnutrition. IRE1 α modulates expression of CCAAT/enhancer-binding protein and peroxisome proliferator-activated receptor family members to boost hepatic fatty acid oxidation, lipolysis and anti-inflammatory responses through either the XBP1s pathway or the RIDD pathway^{116,154}. Under physiological conditions, IRE1 α cleaves a subset of miRNAs that are functionally involved in inflammation and metabolism in the liver, leading to their degradation¹¹⁶. Furthermore, ablation of the UPR transducer ATF6 leads to hepatic steatosis owing to decreased fatty acid oxidation in mice challenged with drug-induced ER stress^{155,156}. Similarly to ATF6, hepatic-specific cAMP-responsive element-binding protein (CREBH), another ER-located bZIP transcription factor, is activated through regulated intramembrane proteolysis under a variety of cellular stress signals^{29,157,158}. However, cleavage and activation of CREBH did not induce UPR genes but rather induced the genes encoding functions involved in systemic inflammation and energy homeostasis^{157,159}. In response to disruption of ER homeostasis,

CCAAT/enhancer-binding protein

A member of a family of leucine zipper domain-containing transcription factors that are functionally involved in different cellular responses, such as in the control of cell growth and differentiation, metabolism and immunity.

Peroxisome proliferator-activated receptor

A member of a group of ligand-regulated transcription factors that control gene expression by binding to specific peroxisome proliferator hormone response elements within promoters.

Hepatic steatosis

A reversible condition in which excessive triglyceride fat accumulate in the liver cells, causing liver inflammation and fibrosis when the condition persists.

Box 2 | ER-coordinated organelle physiology in metabolic disease

The endoplasmic reticulum (ER) functions as a central organelle in the coordination of stress responses and in the maintenance of lipid homeostasis by interacting with and forming membrane contact sites with the other organelles in the cell²³⁹. ER and mitochondria interact at sites known as mitochondria-associated membranes (MAMs) to exchange metabolites and Ca²⁺. Recent studies suggested that MAMs could be a hub of hepatic insulin signalling and nutrient sensing²⁴⁰. Lipid droplets, lipid-storage and signal-transduction organelles derived from the ER, are intimately associated with the pathogenesis of metabolic disorders through processes involving multiple organelles. Mitochondria are frequently packed densely with lipid droplets in fat cells²⁴¹. In response to nutrient starvation, lipid droplets, mitochondria and smooth ER in mouse embryonic fibroblasts form complexes to allow coupling of lipolysis and fatty acid oxidation²⁴². Commonly recognized as terminal degradation stations, lysosomes move along microtubules and interface physically and functionally with the ER, lipid droplets and mitochondria in response to energy fluctuations or stress challenges²⁴¹. These interorganelle contacts make possible reticulophagy, lipophagy and mitophagy: the 'self-eating' processes essential for protein quality control, lipid homeostasis and stress adaptation²⁴³. Functional impairment of membrane protein regulators or enzymes located in these dynamic organelle responsive systems, which can be triggered by overnutrition or other metabolic conditions, has been extensively and independently implicated in metabolic diseases, such as fatty liver disease, obesity and type 2 diabetes. From this perspective, metabolic diseases are 'organelle diseases'.

inflammatory challenges or circadian cues, CREBH transits from the ER to the Golgi apparatus, where it is processed to release a potent CREB transcription factor that drives expression of key genes encoding metabolic regulators or enzymes involved in hepatic lipolysis, fatty acid oxidation, lipophagy and glucose metabolism^{159–164}. Importantly, CREBH deficiency is associated with hepatic steatosis and hyperlipidaemia in humans^{165,166}.

Maladaptive UPR signalling is associated with diabetes and impaired survival of pancreatic β -cells. Hyperactivation of IRE1 α , or loss of PERK or IRE1 α function, resulted in low β -cell survival^{25,139,167,168}. *Xbp1*-knockout mice develop liver dysfunction, and reconstitution of XBP1 expression in the liver bypassed embryonic lethality but resulted in a failure of exocrine pancreas function¹⁶⁹. Loss-of-function mutations in *PERK* can cause a rare human diabetic condition known as Wolcott–Rallison syndrome associated with infantile-onset diabetes, similarly to what was observed in eIF2 α phosphorylation-deficient or PERK-deficient mice^{167,170,171}. Strikingly, CHOP deletion protected pancreatic β -cell function, reduced oxidative stress and prevented diet-induced diabetes in mice¹⁷². In addition, prolonged ER stress was linked to hepatic insulin resistance, where sustained IRE1 α and JUN N-terminal kinase activation inhibited insulin receptor signalling¹⁷³. In the context of obesity, lipids accumulated in the ER can trigger an ER stress response that is detrimental to liver function¹⁷⁴.

Cancer. Accumulating evidence suggests that disrupted ER proteostasis is a hallmark of cancer (reviewed in¹⁷⁵). Cancer cells rapidly metabolize glucose and proliferate, which could lead to poor vascularization of tumour mass, low oxygen supply and nutrient deprivation. In addition, overexpression of oncogenes stimulates protein synthesis and secretory demands. These oncogenic conditions are typical ER stress triggers, and UPR activation promotes the process of oncogenic transformation

where all UPR signalling branches contribute to tumour growth, angiogenesis and immune evasion^{175,176}. The high basal levels of UPR activation in cancer cells provides a survival advantage; however, it also keeps cells on a tight threshold of survival–death transition. It is possible that cancer cells require optimal UPR machinery for survival and that either inhibiting the UPR response or increasing ER stress levels may be an effective approach to repress oncogenesis. In human biopsy samples from brain cancer, breast cancer, lymphoma and multiple myeloma, high expression of XBP1s correlates with poor prognosis and low patient survival^{177–180}.

Small-molecule inhibitors of the enzymatic activity of PERK or IRE1 α have demonstrated efficacy in various preclinical models of cancer¹⁸¹. The IRE1 α –XBP1 UPR branch acts in synergy with hypoxia-inducible factor 1 α in human triple-negative breast cancers to promote angiogenesis and cancer cell proliferation¹⁷⁷. The IRE1 α –XBP1 pathway also promotes prostate cancer by activating MYC signalling¹⁸² and hepatocellular carcinoma by enhancing metabolic inflammation and hepatocyte proliferation¹⁸³. However, IRE1 α is otherwise required to prevent oncogenesis in various cancer types. It was shown that dietary restriction limited cancer progression through IRE1 α -dependent anticancer immunosurveillance¹⁸⁴. A low-protein diet reduced tumour growth in three mouse cancer models bearing lymphoma, colorectal carcinoma and melanoma cells, respectively¹⁸⁵, suggesting a tumour-suppressive role of the IRE1 α –XBP1 pathway. A recent study revealed an intriguing scenario where XBP1s and RIDD have opposite effects on brain cancer progression through remodelling tumour stroma¹⁷⁸. Targeting PERK signalling in human colorectal carcinoma cells reduced tumour size¹⁸⁶, whereas suppression of translational inhibition mediated by eIF2 α can selectively trigger cytotoxic effects against aggressive metastatic prostate cancer¹⁸⁷. These selected examples illustrate the fundamental role of the UPR in the progression of cancer.

Immunology. UPR signalling intersects at many levels with the innate immune response and the adaptive immune response¹⁸⁸. By controlling the differentiation and function of immune cells, the UPR supports the full complement of immune effectors required for self-tolerance and defence against extracellular pathogens. The IRE1 α -mediated UPR is required for both early and late stages of B cell differentiation^{141,189}. Activation of B cell receptor signals stimulates IRE1 α activity to initiate splicing of *XBP1* mRNA, a target of the B cell differentiation regulator BLIMP1^{34,190}. While XBP1 deficiency in B cells leads to an absence of antibody-producing plasma cells, XBP1 is marginally involved in B cell maturation or isotype switching. However, IRE1 α is required for pro-B cell differentiation and survival, in addition to the differentiation of plasma cells, possibly through impacting V(D)J antigen receptor rearrangements^{189,191}. The IRE1 α –XBP1 UPR branch is also required for dendritic cell development and survival¹⁹². Loss of IRE1 α -dependent RIDD, on top of XBP1 deficiency, caused intestinal dendritic cell demise, implicating the role of the RIDD pathway in dendritic cell survival under pathophysiological conditions¹⁹³.

Innate immune response

The first line of non-specific immune response consisting of physical, chemical and cellular defences against the spread and movement of foreign pathogens.

Adaptive immune response

The acquired immune response that is primarily mediated by T and B lymphocytes to attack specific pathogens.

Isotype switching

A biological process that changes immunoglobulin production of B lymphocytes from one type to another; also known as immunoglobulin class switching.

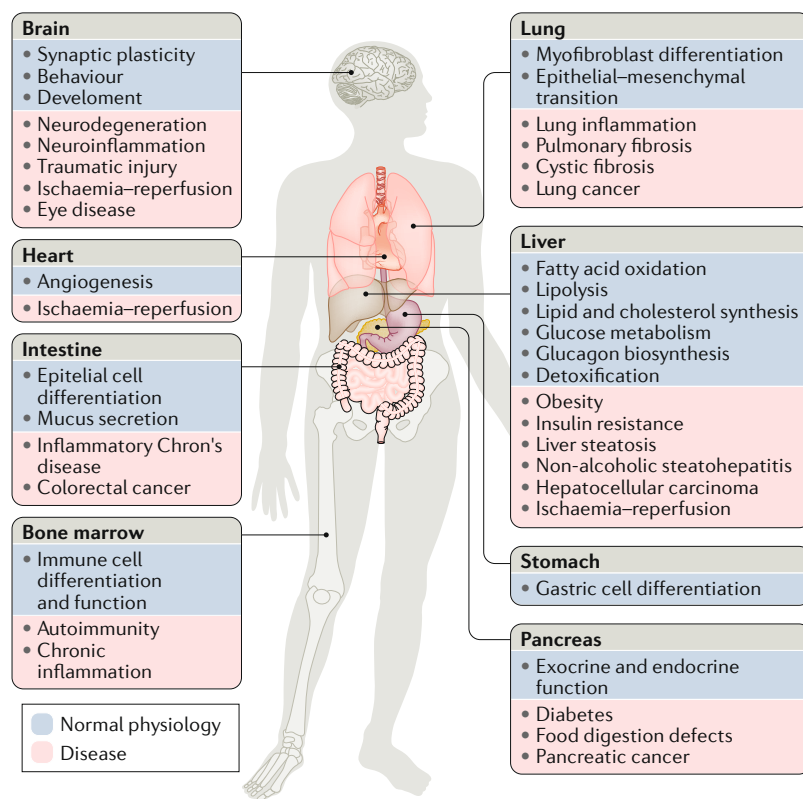


Fig. 5 | Role of the UPR in physiology and diseases. Genetic and pharmacological manipulation of major unfolded protein response (UPR) components has revealed that the UPR pathways play a part in the functions of diverse organs and cell types. Preclinical models have also shown that dysregulation of UPR signalling, mediated by specific UPR components, contributes to a variety of diseases. The figure illustrates the roles of the UPR in organ physiology (blue) or pathological conditions (pink) affecting the same tissues.

Moreover, the IRE1 α –XBP1 branch activates natural killer cell immunity in part by regulating the oncogenic transactivator MYC¹⁹⁴.

The UPR is extensively involved in the signal transduction of inflammatory responses. PERK-mediated eIF2 α phosphorylation attenuates overall protein synthesis and favours nuclear factor- κ B activation to induce proinflammatory genes^{195,196}. Alternatively, IRE1 α and PERK signalling promote production of proinflammatory cytokines through the direct binding of XBP1 or ATF4 to the *Tnfa*, *Il6* and *Il8* gene promoters in macrophages, fibroblasts, astrocytes or epithelial cells^{135,197–199}. Pathologically, the IRE1 α -mediated UPR functions as a critical regulatory node governing macrophage-mediated inflammation in metabolic and autoimmune diseases. In adipose tissues, IRE1 α senses metabolic and immunological states and consequently guides adipose tissue macrophage polarization²⁰⁰. Additionally, hyperactivation of the IRE1 α –XBP1 pathway in macrophages facilitates production of proinflammatory cytokines, a major driving force of inflammatory arthritis¹¹².

Brain physiology and neurodegenerative diseases. In neurons, the secretory pathway is essential for the production of most synaptic proteins that support neuronal connectivity and brain functions. Many studies revealed

that the control of protein synthesis by eIF2 α phosphorylation modulates synaptic plasticity and determines complex behaviours, including learning and memory²⁰¹. Small molecules that block the translational repression mediated by phosphorylated eIF2 α enhance the basal memory capacity of mice and rats²⁰². In the brain, XBP1s was shown to regulate the transcription of a cluster of synaptic genes and neurotrophins^{109,110} and thus enhance learning and memory²⁰³. In the context of brain development, PERK signalling regulated neurogenesis in the cortex, and genetic ablation of PERK resulted in microcephaly²⁰⁴. PERK expression enhanced the generation of intermediate progenitors and projection neurons in different cortical layers, thereby impacting on overall brain architecture. As mentioned earlier, IRE1 α physically interacts with filamin A, modulating cytoskeleton dynamics and cell movement¹³³. Mutations in the gene encoding filamin A are the underlying cause of paraventricular heterotopies, a disease condition driven by altered neuronal migration during brain development²⁰⁵. Genetic depletion of IRE1 α during brain cortex development led to a phenotype resembling filamin A deficiency, with delayed cortical migration and altered morphology of the brain¹³³. In vitro experiments indicated that XBP1 expression drives neuronal differentiation in response to BDNF, and these effects involve in part the upregulation of BDNF on a feedforward loop^{203,206}. Thus, the UPR is emerging as a central regulator of neuronal physiology and cognition, in addition to brain development.

Alteration to ER function is common in many neurodegenerative diseases such as Alzheimer disease, Huntington disease, Parkinson disease, prion-related disorders and amyotrophic lateral sclerosis^{207,208}. Although all these diseases are linked to protein misfolding, most of the protein aggregates accumulate in the cytosol, not in the ER lumen. However, several studies indicated that these disease-associated protein aggregates abnormally interacted with the regulatory components of the secretory pathway, including ERAD, ATF6 signalling, ER to Golgi apparatus vesicular trafficking, chaperone function and the proteasome, among other proteostasis-related processes (reviewed in²⁰⁷). The occurrence of chronic ER stress blocks the production of synaptic proteins by repressing protein translation through the sustained phosphorylation of eIF2 α ^{209,210} and may result in a proapoptotic reaction owing to the occurrence of unresolved stress. Genetic manipulation of the IRE1 α –XBP1 pathway in mouse models has demonstrated divergent roles of the UPR in various pathological conditions affecting the nervous system, including Parkinson disease²¹¹, amyotrophic lateral sclerosis²¹², Huntington disease²¹³, Alzheimer disease²¹⁴, prion-related disorders^{210,215}, spinal cord injury²¹⁶ and peripheral nerve degeneration²¹⁷. Similarly, genetic and pharmacological manipulation of the PERK–eIF2 α pathway modifies disease progression in various models of neurodegeneration^{208,209}. Preclinical studies suggested that use of small molecules to target different UPR signalling branches¹⁸¹ or that the enforcement of XBP1s or chaperone expression through gene therapy approaches delays neurodegeneration (reviewed in²¹⁸). However, recent studies suggested that XBP1s may have alternative

UPRosome

A protein complex assembled at the level of IRE1 α that regulates its activity and mediates the crosstalk with other signalling pathways and biological processes.

roles in the nervous system at the level of astrocytes, where it drives detrimental proinflammatory reactions and contributes to autoimmune diseases such as multiple sclerosis¹⁹⁹.

Conclusions and perspective

The UPR is a signalling pathway that is central for the determination of cell fate — cell death or survival — under ER stress. However, the mechanisms underlying the cell survival to cell death transition under ER stress remain largely unknown (see BOX 3 for outstanding questions and misconceptions). One possible explanation may involve the dynamic nature of IRE1 α assembly with proteins that control signalling outputs. Ten years ago, the concept of the UPRosome was proposed⁹⁴, where IRE1 α -containing protein complexes are envisioned as

a platform to control its activity and also mediate the crosstalk with other intracellular signalling pathways. This concept has been expanded to PERK and ATF6. Studies assessing the nature of the interactome of UPR sensors revealed novel biological functions of the pathway in diverse biological processes, such as cytoskeleton dynamics, mitochondrial bioenergetics and cell differentiation. These alternative functions could be mediated by non-canonical signalling independent of the RNase activity of IRE1 α . It is anticipated that, depending on the cell type analysed and the stimuli, distinct IRE1 α assemblies will form in a temporally and spatially dynamic manner. The minimal compositions of these protein complexes remains to be defined, in addition to the way they are modified in specific cell types or by physiological and pathological stimuli. It is important to note that many of the studies describing UPR-sensor binding partners rely on overexpression systems or on single studies (TABLE 1; Supplementary Table 1). As IRE1 α and PERK are low-abundance proteins, it might be feasible to speculate that transient and dynamic interactions, rather than stable protein complexes, might explain the molecular basis and physiological significance of the IRE1 α UPRosome. In addition, subcellular localized protein complexes enriched in particular ER subdomains might contain a specific subset of binding partners to control distinct cellular processes. The dynamics of IRE1 α cluster assembly and disassembly were recently reported, and it was suggested that only a small fraction of IRE1 α clusters form large oligomers (~5%), that they have complex topology and that their composition changes quickly under ER stress²¹⁹, supporting the existence of distinct and dynamic pools of IRE1 α inside the cell.

Abnormal levels of ER stress are extensively linked to different human diseases, including neurodegeneration, obesity, diabetes, cancer and autoimmunity. Small molecules that specifically inhibit or activate individual UPR pathways are needed to guide studies towards therapeutic implications in humans. Different UPR pathways may be activated for unique pathophysiological processes in cell-specific and disease-specific states. For example, PERK inhibition attenuates neurodegeneration but also causes diabetes due to pancreatic β -cell failure^{220,221}; IRE1 α inhibition represses triple-negative breast cancer but may cause colorectal cancer^{177,222}. Most significantly, *ATF6* inactivating mutations in humans cause a very specific loss of photoreceptor cone cells associated with age-related colour blindness²²³, while *Atf6*-null mice exhibit no overt phenotype³⁰. Temporal and tissue-specific gene therapies to improve ER proteostasis to deliver active UPR components (for example, XBP1s or ATF6p50) or chaperones (for example, BiP) may be an interesting strategy to avoid systemic side effects of prolonged administration of small molecules²¹⁸. It is important to consider therapeutic avenues to reduce ER stress levels. For example, chemical chaperones can prevent protein aggregation, reduce protein misfolding and attenuate UPR activation. Tauroursodeoxycholic acid is the most widely used chemical chaperone to reduce ER stress. It is well tolerated and is presently being tested in ~20 clinical studies, of which the most

Box 3 | Outstanding questions and misconceptions

- Many researchers measure mRNA or protein induction as markers for endoplasmic reticulum (ER) stress. It is best to monitor the most proximal events in unfolded protein response (UPR) sensor activation. BiP is a poor marker for ER stress because it is an abundant and stable protein. Sensitive real-time markers for UPR activation in vivo are needed to provide insights into kinetic, physiological and pathological conditions that cause UPR activation.
- Although several markers are assumed to be ER stress dependent, they are not reliable indicators of ER stress response because of signalling crosstalk. For example, phosphorylation of eukaryotic translation initiation factor 2 subunit- α (eIF2 α) or ATF4 expression is mediated by PERK, but also three additional eIF2 α kinases are part of the integrated stress response. In addition, CHOP (also known as GADD153) induction is frequently used as a marker for ER stress, but it can be induced under a variety of different stress conditions, such as DNA damage.
- It was reported that eIF2 α phosphorylation inhibits only 5' methylguanylate (5me-G) cap-dependent mRNA translation. However, phosphorylated eIF2 α inhibits both cap-dependent and cap-independent mRNA translation.
- Investigators that aim to study mechanisms by which cells activate the UPR to cope with ER stress should not use pharmacological inducers of ER stress because they are not physiological, have significant adverse effects and often trigger a terminal proapoptotic response in parallel to an adaptive UPR reaction. Possible approaches to minimize this limitation include use of very low concentrations as a pulse and pharmacological agents with effects that are reversible.
- There is strong interest in investigating how protein misfolding in the ER causes oxidative stress. Under these conditions, there is debate as to whether the ER lumen becomes more reducing or more oxidizing. It would be important to consider how different cell types respond and define how the demand for disulfide bond formation by protein disulfide isomerases may impact ER redox balance. More sensitive and reliable compartment-specific real-time sensors for Ca²⁺ and reactive oxygen species are needed.
- When one is inhibiting or activating a single UPR pathway by genetic or pharmacological approaches, it is necessary to delineate possible effects on parallel signalling branches to assess the specificity of the observations to a single signalling branch.
- Defining the role of IRE1 α needs to consider its function as a signalling scaffold and the impact of regulated IRE1-dependent decay (RIDD) and other degradation pathways involving mRNAs and precursor microRNAs. Assessment of mRNA stability of proposed RIDD targets is required.
- Are protein complexes (that is, distinct UPRosomes) formed by IRE1 α , PERK and ATF6 different from cell type to cell type or by the specific ER stressor analysed? How low-abundance UPR stress sensors mediate diverse cellular functions through protein-protein interactions remains to be determined. Are these complexes localized to specific ER subdomains?
- How does an adaptive UPR turn into an inducer of apoptosis? This is probably one of the most significant questions that needs to be addressed. How do ER stress sensors integrate information about the intensity and duration of the stress stimuli to determine cell fate?

promising are for treatment of amyotrophic lateral sclerosis and insulin resistance. Proteasome inhibitors have been intensively studied in the treatment of cancers. In particular, bortezomib (Velcade), a highly selective and reversible proteasome inhibitor, was approved for clinical use against multiple myeloma and is in clinical trials as a single agent or in combination with chemotherapeutics against other tumour malignancies²²⁴. Despite the progress, efforts to target the UPR for cancer therapy

still face major challenges. A critical question is what determines the switch between prosurvival and prodeath UPR signals. Furthermore, solid tumours are highly heterogeneous. It is unclear whether the status of UPR activation reflects the tumour heterogeneity. For rational anticancer drug designs through targeting the UPR, it is necessary to answer these crucial questions.

Published online: 26 May 2020

- Hebert, D. N. & Molinari, M. In and out of the ER: protein folding, quality control, degradation, and related human diseases. *Physiol. Rev.* **87**, 1377–1408 (2007).
- Balch, W. E., Morimoto, R. I., Dillin, A. & Kelly, J. W. Adapting proteostasis for disease intervention. *Science* **319**, 916–919 (2008).
- Kaufman, R. J. Orchestrating the unfolded protein response in health and disease. *J. Clin. Invest.* **110**, 1389–1398 (2002).
- Ron, D. & Walter, P. Signal integration in the endoplasmic reticulum unfolded protein response. *Nat. Rev. Mol. Cell Biol.* **8**, 519–529 (2007).
- Dever, T. E. et al. Phosphorylation of initiation factor 2 alpha by protein kinase GCN2 mediates gene-specific translational control of GCN4 in yeast. *Cell* **68**, 585–596 (1992).
- Vattem, K. M. & Wek, R. C. Reinitiation involving upstream ORFs regulates ATF4 mRNA translation in mammalian cells. *Proc. Natl Acad. Sci. USA* **101**, 11269–11274 (2004).
- Lu, P. D., Harding, H. P. & Ron, D. Translation reinitiation at alternative open reading frames regulates gene expression in an integrated stress response. *J. Cell Biol.* **167**, 27–33 (2004).
- Yaman, I. et al. The zipper model of translational control: a small upstream ORF is the switch that controls structural remodeling of an mRNA leader. *Cell* **113**, 519–531 (2003).
- Harding, H. P., Zhang, Y. & Ron, D. Protein translation and folding are coupled by an endoplasmic-reticulum-resident kinase. *Nature* **397**, 271–274 (1999). **This study reports the discovery of the consequences of ER stress for protein translation through PERK.**
- Harding, H. P. et al. An integrated stress response regulates amino acid metabolism and resistance to oxidative stress. *Mol. Cell* **11**, 619–633 (2003).
- Han, J. et al. ER-stress-induced transcriptional regulation increases protein synthesis leading to cell death. *Nat. Cell Biol.* **15**, 481–490 (2013).
- Novoa, I., Zeng, H., Harding, H. P. & Ron, D. Feedback inhibition of the unfolded protein response by GADD34-mediated dephosphorylation of eIF2alpha. *J. Cell Biol.* **153**, 1011–1022 (2001).
- Jousse, C. et al. Inhibition of a constitutive translation initiation factor 2alpha phosphatase, CREP, promotes survival of stressed cells. *J. Cell Biol.* **163**, 767–775 (2003).
- Harding, H. P. et al. Ppp1r15 gene knockout reveals an essential role for translation initiation factor 2 alpha (eIF2alpha) dephosphorylation in mammalian development. *Proc. Natl Acad. Sci. USA* **106**, 1832–1837 (2009).
- Credle, J. J., Finer-Moore, J. S., Papa, F. R., Stroud, R. M. & Walter, P. On the mechanism of sensing unfolded protein in the endoplasmic reticulum. *Proc. Natl Acad. Sci. USA* **102**, 18773–18784 (2005). **This study proposes a direct recognition model for sensing ER stress in yeast.**
- Zhou, J. et al. The crystal structure of human IRE1 luminal domain reveals a conserved dimerization interface required for activation of the unfolded protein response. *Proc. Natl Acad. Sci. USA* **103**, 14343–14348 (2006).
- Yoshida, H., Matsui, T., Yamamoto, A., Okada, T. & Mori, K. XBP1 mRNA is induced by ATF6 and spliced by IRE1 in response to ER stress to produce a highly active transcription factor. *Cell* **107**, 881–891 (2001). **This article is one of the first reports identifying XBP1 as a downstream target of IRE1α.**
- Calton, M. et al. IRE1 couples endoplasmic reticulum load to secretory capacity by processing the XBP-1 mRNA. *Nature* **415**, 92–96 (2002). **Yoshida et al. (2001) and Calton et al. (2002) identify XBP1 as a downstream target of IRE1α.**
- Shen, X. et al. Complementary signaling pathways regulate the unfolded protein response and are required for *C. elegans* development. *Cell* **107**, 893–903 (2001). **This article is one of the first reports identifying XBP1 as a downstream target of IRE1α.**
- Hollien, J. et al. Regulated Ire1-dependent decay of messenger RNAs in mammalian cells. *J. Cell Biol.* **186**, 323–331 (2009).
- Hollien, J. & Weissman, J. S. Decay of endoplasmic reticulum-localized mRNAs during the unfolded protein response. *Science* **313**, 104–107 (2006). **In this study, the process known as regulated IRE1-dependent decay (RIDD) is discovered.**
- Upton, J. P. et al. IRE1 alpha cleaves select microRNAs during ER stress to derepress translation of proapoptotic caspase-2. *Science* **338**, 818–822 (2012).
- Wang, J. M., Qiu, Y., Yang, Z. Q., Li, L. & Zhang, K. Inositol-requiring enzyme 1 facilitates diabetic wound healing through modulating microRNAs. *Diabetes* **66**, 177–192 (2017).
- Han, D. et al. IRE1 alpha kinase activation modes control alternate endoribonuclease outputs to determine divergent cell fates. *Cell* **138**, 562–575 (2009).
- Hassler, J. R. et al. The IRE1alpha/XBP1s pathway is essential for the glucose response and protection of beta cells. *PLoS Biol.* **13**, e1002277 (2015).
- Acosta-Alvear, D. et al. The unfolded protein response and endoplasmic reticulum protein targeting machineries converge on the stress sensor IRE1. *eLife* **7**, e43036 (2018).
- Hetz, C. & Papa, F. R. The unfolded protein response and cell fate control. *Mol. Cell* **69**, 169–181 (2018).
- Haze, K., Yoshida, H., Yanagi, H., Yura, T. & Mori, K. Mammalian transcription factor ATF6 is synthesized as a transmembrane protein and activated by proteolysis in response to endoplasmic reticulum stress. *Mol. Biol. Cell* **10**, 3787–3799 (1999).
- Ye, J. et al. ER stress induces cleavage of membrane-bound ATF6 by the same proteases that process SREBPs. *Mol. Cell* **6**, 1355–1364 (2000).
- Wu, J. et al. ATF6alpha optimizes long-term endoplasmic reticulum function to protect cells from chronic stress. *Dev. Cell* **13**, 351–364 (2007).
- Shoulders, M. D. et al. Stress-independent activation of XBP1s and/or ATF6 reveals three functionally diverse ER proteostasis environments. *Cell Rep.* **3**, 1279–1292 (2013).
- Bommasamy, H. et al. ATF6alpha induces XBP1-independent expansion of the endoplasmic reticulum. *J. Cell Sci.* **122**, 1626–1636 (2009).
- Sriburi, R., Jackowski, S., Mori, K. & Brewer, J. W. XBP1: a link between the unfolded protein response, lipid biosynthesis, and biogenesis of the endoplasmic reticulum. *J. Cell Biol.* **167**, 35–41 (2004).
- Shaffer, A. L. et al. XBP1, downstream of Blimp-1, expands the secretory apparatus and other organelles, and increases protein synthesis in plasma cell differentiation. *Immunity* **21**, 81–93 (2004).
- Hetz, C. et al. Proapoptotic BAX and BAK modulate the unfolded protein response by a direct interaction with IRE1 alpha. *Science* **312**, 572–576 (2006).
- Wei, M. C. et al. Proapoptotic BAX and BAK: a requisite gateway to mitochondrial dysfunction and death. *Science* **292**, 727–730 (2001).
- Pihan, P., Carreras-Sureda, A. & Hetz, C. BCL-2 family: integrating stress responses at the ER to control cell demise. *Cell Death Differ.* **24**, 1478–1487 (2017).
- Singh, R., Letai, A. & Sarosiek, K. Regulation of apoptosis in health and disease: the balancing act of BCL-2 family proteins. *Nat. Rev. Mol. Cell Biol.* **20**, 175–193 (2019).
- Puthalakkath, H. et al. ER stress triggers apoptosis by activating BH3-only protein Bim. *Cell* **129**, 1337–1349 (2007).
- McCullough, K. D., Martindale, J. L., Klotz, L. O., Aw, T. Y. & Holbrook, N. J. Gadd153 sensitizes cells to endoplasmic reticulum stress by down-regulating Bcl2 and perturbing the cellular redox state. *Mol. Cell Biol.* **21**, 1249–1259 (2001).
- Marciniak, S. J. et al. CHOP induces death by promoting protein synthesis and oxidation in the stressed endoplasmic reticulum. *Genes Dev.* **18**, 3066–3077 (2004).
- Rutkowski, D. T. et al. Adaptation to ER stress is mediated by differential stabilities of pro-survival and pro-apoptotic mRNAs and proteins. *PLoS Biol.* **4**, e374 (2006).
- Pedraza, J. M. & van Oudenaarden, A. Noise propagation in gene networks. *Science* **307**, 1965–1969 (2005).
- Schinzl, R. T. et al. The hyaluronidase, TMEM2, promotes ER homeostasis and longevity independent of the UPR(ER). *Cell* **179**, 1306–1318 (2019).
- Lerner, A. G. et al. IRE1 alpha induces thioredoxin-interacting protein to activate the NLRP3 inflammasome and promote programmed cell death under irremediable ER stress. *Cell Metab.* **16**, 250–264 (2012).
- Bronner, D. N. et al. Endoplasmic reticulum stress activates the inflammasome via NLRP3- and caspase-2-driven mitochondrial damage. *Immunity* **43**, 451–462 (2015).
- Oslowski, C. M. et al. Thioredoxin-interacting protein mediates ER stress-induced beta cell death through initiation of the inflammasome. *Cell Metab.* **16**, 265–273 (2012).
- Lin, J. H. et al. IRE1 signaling affects cell fate during the unfolded protein response. *Science* **318**, 944–949 (2007).
- Lam, M., Lawrence, D. A., Ashkenazi, A. & Walter, P. Confirming a critical role for death receptor 5 and caspase-8 in apoptosis induction by endoplasmic reticulum stress. *Cell Death Differ.* **25**, 1530–1531 (2018).
- Munoz-Pinedo, C. & Lopez-Rivas, A. A role for caspase-8 and TRAIL-R2/DR5 in ER-stress-induced apoptosis. *Cell Death Differ.* **25**, 226 (2018).
- Lu, M. et al. Opposing unfolded-protein-response signals converge on death receptor 5 to control apoptosis. *Science* **345**, 98–101 (2014).
- Chang, T. K. et al. Coordination between two branches of the unfolded protein response determines apoptotic cell fate. *Mol. Cell* **71**, 629–636 (2018).
- Rojas-Rivera, D. & Hetz, C. TMBIM protein family: ancestral regulators of cell death. *Oncogene* **34**, 269–280 (2015).
- Rojas-Rivera, D. et al. TMBIM3/GRINA is a novel unfolded protein response (UPR) target gene that controls apoptosis through the modulation of ER calcium homeostasis. *Cell Death Differ.* **19**, 1013–1026 (2012).
- Chae, H. J. et al. Bi-1 regulates an apoptosis pathway linked to endoplasmic reticulum stress. *Mol. Cell* **15**, 355–366 (2004).
- Bertolotti, A., Zhang, Y., Hendershot, L. M., Harding, H. P. & Ron, D. Dynamic interaction of BiP and ER stress transducers in the unfolded-protein response. *Nat. Cell Biol.* **2**, 326–332 (2000). **This study indicates that BiP is involved in the regulation of the UPR.**
- Karagoz, G. E., Acosta-Alvear, D. & Walter, P. The unfolded protein response: detecting and responding to fluctuations in the protein-folding capacity of the endoplasmic reticulum. *Cold Spring Harb. Perspect. Biol.* **11**, a033886 (2019).
- Liu, C. Y., Wong, H. N., Schuete, J. A. & Kaufman, R. J. The protein kinase/endoribonuclease IRE1 alpha that signals the unfolded protein response has a luminal N-terminal ligand-independent dimerization domain. *J. Biol. Chem.* **277**, 18346–18356 (2002).
- Oikawa, D., Kimata, Y., Kohno, K. & Iwakaki, T. Activation of mammalian IRE1 alpha upon ER stress depends on dissociation of BiP rather than on direct interaction with unfolded proteins. *Exp. Cell Res.* **315**, 2496–2504 (2009).

60. Walter, P. & Ron, D. The unfolded protein response: from stress pathway to homeostatic regulation. *Science* **334**, 1081–1086 (2011).
61. Pincus, D. et al. BiP binding to the ER-stress sensor Ire1 tunes the homeostatic behavior of the unfolded protein response. *PLoS Biol.* **8**, e1000415 (2010).
62. Kimata, Y., Oikawa, D., Shimizu, Y., Ishiwata-Kimata, Y. & Kohno, K. A role for BiP as an adaptor for the endoplasmic reticulum stress-sensing protein Ire1. *J. Cell Biol.* **167**, 445–456 (2004).
63. Ishiwata-Kimata, Y., Promlek, T., Kohno, K. & Kimata, Y. BiP-bound and nonclustered mode of Ire1 evokes a weak but sustained unfolded protein response. *Genes Cell* **18**, 288–301 (2013).
64. Amin-Wetzel, N. et al. A J-protein Co-chaperone recruits BiP to monomerize Ire1 and repress the unfolded protein response. *Cell* **171**, 1625–1637 e1613 (2017).
65. Amin-Wetzel, N., Neidhardt, L., Yan, Y., Mayer, M. P. & Ron, D. Unstructured regions in Ire1 α specify BiP-mediated destabilisation of the luminal domain dimer and repression of the UPR. *eLife* **8**, e50793 (2019).
66. Carrara, M., Prisch, F., Nowak, P. R., Kopp, M. C. & Ali, M. M. Noncanonical binding of BiP ATPase domain to Ire1 and Perk is dissociated by unfolded protein CH1 to initiate ER stress signaling. *eLife* **4**, e03522 (2015).
67. Kopp, M. C., Nowak, P. R., Larburu, N., Adams, C. J. & Ali, M. M. In vitro FRET analysis of Ire1 and BiP association and dissociation upon endoplasmic reticulum stress. *eLife* **7**, e30257 (2018).
68. Kopp, M. C., Larburu, N., Durairaj, V., Adams, C. J. & Ali, M. M. UPR proteins Ire1 and PERK switch BiP from chaperone to ER stress sensor. *Nat. Struct. Mol. Biol.* **26**, 1053–1062 (2019).
69. Gardner, B. M. & Walter, P. Unfolded proteins are Ire1-activating ligands that directly induce the unfolded protein response. *Science* **333**, 1891–1894 (2011).
70. Kimata, Y. et al. Two regulatory steps of ER-stress sensor Ire1 involving its cluster formation and interaction with unfolded proteins. *J. Cell Biol.* **179**, 75–86 (2007).
71. Karagoz, G. E. et al. An unfolded protein-induced conformational switch activates mammalian Ire1. *eLife* **6**, e30700 (2017).
72. Wang, P., Li, J., Tao, J. & Sha, B. The luminal domain of the ER stress sensor protein PERK binds misfolded proteins and thereby triggers PERK oligomerization. *J. Biol. Chem.* **293**, 4110–4121 (2018).
73. Sundaram, A., Appathurai, S., Plumb, R. & Mariappan, M. Dynamic changes in complexes of Ire1 α , PERK, and ATF6 α during endoplasmic reticulum stress. *Mol. Biol. Cell* **29**, 1376–1388 (2018).
74. Oikawa, D., Kitamura, A., Kinjo, M. & Iwakaki, T. Direct association of unfolded proteins with mammalian ER stress sensor, Ire1 β . *PLoS One* **7**, e51290 (2012).
75. Lam, M., Marsters, S. A., Ashkenazi, A. & Walter, P. Misfolded proteins bind and activate death receptor 5 to induce apoptosis during unresolved endoplasmic reticulum stress. *eLife* **9**, e52291 (2020).
76. Sepulveda, D. et al. Interactome screening identifies the ER luminal chaperone Hsp47 as a regulator of the unfolded protein response transducer Ire1 α . *Mol. Cell* **69**, 238–252 (2018).
77. Maiers, J. L. et al. The unfolded protein response mediates fibrogenesis and collagen 1 secretion through regulating TANGO1 in mice. *Hepatology* **65**, 983–998 (2017).
78. Eletto, D., Eletto, D., Dersh, D., Gidalevitz, T. & Argon, Y. Protein disulfide isomerase A6 controls the decay of Ire1 α signaling via disulfide-dependent association. *Mol. Cell* **53**, 562–576 (2014).
79. Groenendyk, J. et al. Interplay between the oxidoreductase PDI A6 and microRNA-322 controls the response to disrupted endoplasmic reticulum calcium homeostasis. *Sci. Signal.* **7**, ra54 (2014).
80. Oka, O. B. et al. ERp18 regulates activation of ATF6 α during unfolded protein response. *EMBO J* **38**, e100990 (2019).
81. Higa, A. et al. Endoplasmic reticulum stress-activated transcription factor ATF6 α requires the disulfide isomerase PDI A5 to modulate chemoresistance. *Mol. Cell Biol.* **34**, 1839–1849 (2014).
82. Promlek, T. et al. Membrane aberrancy and unfolded proteins activate the endoplasmic reticulum stress sensor Ire1 in different ways. *Mol. Biol. Cell* **22**, 3520–3532 (2011).
83. Volmer, R., van der Ploeg, K. & Ron, D. Membrane lipid saturation activates endoplasmic reticulum unfolded protein response transducers through their transmembrane domains. *Proc. Natl Acad. Sci. USA* **110**, 4628–4633 (2013).
84. Halbleib, K. et al. Activation of the unfolded protein response by lipid bilayer stress. *Mol. Cell* **67**, 673–684 (2017).
85. Kono, N., Amin-Wetzel, N. & Ron, D. Generic membrane-spanning features endow Ire1 α with responsiveness to membrane aberrancy. *Mol. Biol. Cell* **28**, 2318–2332 (2017).
86. Tam, A. B. et al. The UPR activator ATF6 responds to proteotoxic and lipotoxic stress by distinct mechanisms. *Dev. Cell* **46**, 327–343 (2018).
87. Fun, X. H. & Thibault, G. Lipid bilayer stress and proteotoxic stress-induced unfolded protein response deploy divergent transcriptional and non-transcriptional programmes. *Biochim. Biophys. Acta* **1865**, 158449 (2019).
88. Bailly-Maitre, B. et al. Cytoprotective gene bi-1 is required for intrinsic protection from endoplasmic reticulum stress and ischemia-reperfusion injury. *Proc. Natl Acad. Sci. USA* **103**, 2809–2814 (2006).
89. Shi, L. et al. Bax inhibitor-1 is required for resisting the early brain injury induced by subarachnoid hemorrhage through regulating Ire1-JNK pathway. *Neuro. Res.* **40**, 189–196 (2018).
90. Lisbona, F. et al. BAX inhibitor-1 is a negative regulator of the ER stress sensor Ire1 α . *Mol. Cell* **33**, 679–691 (2009).
91. Castillo, K. et al. BAX inhibitor-1 regulates autophagy by controlling the Ire1 α branch of the unfolded protein response. *EMBO J.* **30**, 4465–4478 (2011).
92. Pinkaew, D. et al. Fortilin binds Ire1 α and prevents ER stress from signaling apoptotic cell death. *Nat. Commun.* **8**, 18 (2017).
93. Rodriguez, D. A. et al. BH3-only proteins are part of a regulatory network that control the sustained signalling of the unfolded protein response sensor Ire1 α . *EMBO J.* **31**, 2322–2335 (2012).
94. Hetz, C. & Climcher, L. H. Fine-tuning of the unfolded protein response: assembling the Ire1 α interactome. *Mol. Cell* **35**, 551–561 (2009).
95. He, Y. et al. Nonmuscle myosin IIB links cytoskeleton to Ire1 α signaling during ER stress. *Dev. Cell* **23**, 1141–1152 (2012).
96. Morita, S. et al. Targeting ABL-Ire1 α signaling spares ER-stressed pancreatic beta cells to reverse autoimmune diabetes. *Cell Metab.* **25**, 883–897 (2017).
97. Yanagitani, K., Kimata, Y., Kadokura, H. & Kohno, K. Translational pausing ensures membrane targeting and cytoplasmic splicing of XBP1 mRNA. *Science* **331**, 586–589 (2011).
98. Shanmuganathan, V. et al. Structural and mutational analysis of the ribosome-arresting human XBP1 u. *eLife* **8**, e46267 (2019).
99. Yanagitani, K. et al. Cotranslational targeting of XBP1 protein to the membrane promotes cytoplasmic splicing of its own mRNA. *Mol. Cell* **34**, 191–200 (2009).
100. Kanda, S., Yanagitani, K., Yokota, Y., Esaki, Y. & Kohno, K. Autonomous translational pausing is required for XBP1 mRNA recruitment to the ER via the SRP pathway. *Proc. Natl Acad. Sci. USA* **113**, E5886–E5895 (2016).
101. Plumb, R., Zhang, Z. R., Appathurai, S. & Mariappan, M. A functional link between the co-translational protein translocation pathway and the UPR. *eLife* **4**, e07426 (2015).
102. Tsukumo, Y. et al. TBL2 is a novel PERK-binding protein that modulates stress-signaling and cell survival during endoplasmic reticulum stress. *PLoS One* **9**, e112761 (2014).
103. Huber, A. L. et al. p58(IPK)-mediated attenuation of the proapoptotic PERK-CHOP pathway allows malignant progression upon low glucose. *Mol. Cell* **49**, 1049–1059 (2013).
104. Tyagi, R. et al. Rheb inhibits protein synthesis by activating the PERK-eIF2 α signaling cascade. *Cell Rep.* **10**, 684–693 (2015).
105. Lee, K. P. et al. Structure of the dual enzyme Ire1 reveals the basis for catalysis and regulation in nonconventional RNA splicing. *Cell* **132**, 89–100 (2008).
106. Korennykh, A. V. et al. The unfolded protein response signals through high-order assembly of Ire1. *Nature* **457**, 687–693 (2009).
107. Prisch, F., Nowak, P. R., Carrara, M. & Ali, M. M. Phosphoregulation of Ire1 RNase splicing activity. *Nat. Commun.* **5**, 3554 (2014).
108. Mao, T. et al. PKA phosphorylation couples hepatic inositol-requiring enzyme 1 α to glucagon signaling in glucose metabolism. *Proc. Natl Acad. Sci. USA* **108**, 15852–15857 (2011).
109. Saito, A. et al. Neuronal activity-dependent local activation of dendritic unfolded protein response promotes expression of brain-derived neurotrophic factor in cell soma. *J. Neurochem.* **144**, 35–49 (2018).
110. Hayashi, A. et al. The role of brain-derived neurotrophic factor (BDNF)-induced XBP1 splicing during brain development. *J. Biol. Chem.* **282**, 34525–34534 (2007).
111. Qiu, Y. et al. A crucial role for RACK1 in the regulation of glucose-stimulated Ire1 α activation in pancreatic beta cells. *Sci. Signal.* **3**, ra7 (2010).
112. Qiu, Q. et al. Toll-like receptor-mediated Ire1 α activation as a therapeutic target for inflammatory arthritis. *EMBO J.* **32**, 2477–2490 (2013).
113. Lu, G. et al. PPM1I encodes an inositol requiring-protein 1 (IRE1) specific phosphatase that regulates the functional outcome of the ER stress response. *Mol. Metab.* **2**, 405–416 (2013).
114. Cui, W., Li, J., Ron, D. & Sha, B. The structure of the PERK kinase domain suggests the mechanism for its activation. *Acta Crystallogr. D. Biol. Crystallogr.* **67**, 423–428 (2011).
115. Yang, L. et al. S-Nitrosylation links obesity-associated inflammation to endoplasmic reticulum dysfunction. *Science* **349**, 500–506 (2015).
116. Wang, J. M. et al. Ire1 α prevents hepatic steatosis by processing and promoting the degradation of select microRNAs. *Sci Signal* **11**, ea04617 (2018).
117. Nakato, R. et al. Regulation of the unfolded protein response via S-nitrosylation of sensors of endoplasmic reticulum stress. *Sci. Rep.* **5**, 14812 (2015).
118. Hourihan, J. M., Moronetti Mazzeo, L. E., Fernandez-Cardenas, L. P. & Blackwell, T. K. Cysteine sulfenylation directs Ire-1 to activate the SKN-1/Nrf2 antioxidant response. *Mol. Cell* **63**, 553–566 (2016).
119. Zhu, X. et al. Ubiquitination of inositol-requiring enzyme 1 (IRE1) by the E3 ligase CHIP mediates the Ire1/TRAF2/JNK pathway. *J. Biol. Chem.* **289**, 30567–30577 (2014).
120. Zhu, H. et al. Ubp1 promotes plasma cell development and ER expansion by modulating distinct branches of UPR. *Nat. Commun.* **10**, 1084 (2019).
121. Tschurtschenthaler, M. et al. Defective ATG16L1-mediated removal of Ire1 α drives Crohn's disease-like ileitis. *J. Exp. Med.* **214**, 401–422 (2017).
122. Gao, B. et al. Synoviolin promotes Ire1 ubiquitination and degradation in synovial fibroblasts from mice with collagen-induced arthritis. *EMBO Rep.* **9**, 480–485 (2008).
123. Nadanaka, S., Okada, T., Yoshida, H. & Mori, K. Role of disulfide bridges formed in the luminal domain of ATF6 in sensing endoplasmic reticulum stress. *Mol. Cell Biol.* **27**, 1027–1043 (2007).
124. Shemorry, A. et al. Caspase-mediated cleavage of Ire1 controls apoptotic cell commitment during endoplasmic reticulum stress. *eLife* **8**, e47084 (2019).
125. Fonseca, S. G. et al. Wolfram syndrome 1 gene negatively regulates ER stress signaling in rodent and human cells. *J. Clin. Invest.* **120**, 744–755 (2010).
126. Phillips, M. J. & Voeltz, G. K. Structure and function of ER membrane contact sites with other organelles. *Nat. Rev. Mol. Cell Biol.* **17**, 69–82 (2016).
127. Verfaillie, T. et al. PERK is required at the ER-mitochondrial contact sites to convey apoptosis after ROS-based ER stress. *Cell Death Differ.* **19**, 1880–1891 (2012).
128. Carreras-Sureda, A. et al. Non-canonical function of Ire1 α determines mitochondria-associated endoplasmic reticulum composition to control calcium transfer and bioenergetics. *Nat. Cell Biol.* **21**, 755–767 (2019).
129. Munoz, J. P. et al. Mfn2 modulates the UPR and mitochondrial function via repression of PERK. *EMBO J.* **32**, 2348–2361 (2013).
130. Takeda, K. et al. MITOL prevents ER stress-induced apoptosis by Ire1 α ubiquitylation at ER-mitochondria contact sites. *EMBO J* **38**, e100999 (2019).
131. van Vliet, A. R. et al. The ER stress sensor PERK coordinates ER-plasma membrane contact site formation through interaction with filamin-A and F-actin remodeling. *Mol. Cell* **65**, 885–899 (2017).
132. Ishiwata-Kimata, Y., Yamamoto, Y. H., Takizawa, K., Kohno, K. & Kimata, Y. F-actin and a type-II myosin are required for efficient clustering of the ER stress sensor Ire1. *Cell Struct. Funct.* **38**, 135–143 (2013).

133. Urra, H. et al. IRE1 alpha governs cytoskeleton remodelling and cell migration through a direct interaction with filamin A. *Nat. Cell Biol.* **20**, 942–953 (2018).
134. Tavernier, Q. et al. Regulation of IRE1 RNase activity by the ribonuclease inhibitor 1 (RNH1). *Cell Cycle* **17**, 1901–1916 (2018).
135. Martinon, F., Chen, X., Lee, A. H. & Glimcher, L. H. TLR activation of the transcription factor XBP1 regulates innate immune responses in macrophages. *Nat. Immunol.* **11**, 411–418 (2010).
136. Woo, C. W., Kutzler, L., Kimball, S. R. & Tabas, I. Toll-like receptor activation suppresses ER stress factor CHOP and translation inhibition through activation of eIF2B. *Nat. Cell Biol.* **14**, 192–200 (2012).
137. Woo, C. W. et al. Adaptive suppression of the ATF4-CHOP branch of the unfolded protein response by toll-like receptor signalling. *Nat. Cell Biol.* **11**, 1473–1480 (2009).
138. Chopra, S. et al. IRE1 alpha-XBP1 signaling in leukocytes controls prostaglandin biosynthesis and pain. *Science* **365**, eaau6499 (2019).
139. Lipson, K. L. et al. Regulation of insulin biosynthesis in pancreatic beta cells by an endoplasmic reticulum-resident protein kinase IRE1. *Cell Metab.* **4**, 245–254 (2006).
140. Karali, E. et al. VEGF Signals through ATF6 and PERK to promote endothelial cell survival and angiogenesis in the absence of ER stress. *Mol. Cell* **54**, 559–572 (2014).
141. Iwakoshi, N. N. et al. Plasma cell differentiation and the unfolded protein response intersect at the transcription factor XBP-1. *Nat. Immunol.* **4**, 321–329 (2003).
142. van Anken, E. et al. Sequential waves of functionally related proteins are expressed when B cells prepare for antibody secretion. *Immunity* **18**, 243–253 (2003).
143. Morimoto, R. I. Cell-nonautonomous regulation of proteostasis in aging and disease. *Cold Spring Harb. Perspect. Biol.* <https://doi.org/10.1101/cshperspect.a034074> (2019).
144. Williams, K. W. et al. Xbp1s in Pomc neurons connects ER stress with energy balance and glucose homeostasis. *Cell Metab.* **20**, 471–482 (2014).
145. Martinez, G., Duran-Aniotz, C., Cabral-Miranda, F., Vivar, J. P. & Hetz, C. Endoplasmic reticulum proteostasis impairment in aging. *Aging Cell* **16**, 615–623 (2017).
146. Taylor, R. C. & Dillin, A. XBP-1 is a cell-nonautonomous regulator of stress resistance and longevity. *Cell* **153**, 1435–1447 (2013).
147. Imanikia, S., Ozbey, N. P., Krueger, C., Casanueva, M. O. & Taylor, R. C. Neuronal XBP-1 activates intestinal lysosomes to improve proteostasis in *C. elegans*. *Curr. Biol.* **29**, 2322–2338 (2019).
148. Daniele, J. R. et al. UPR(ER) promotes lipophagy independent of chaperones to extend life span. *Sci. Adv.* **6**, eaaz1441 (2020).
149. Matai, L. et al. Dietary restriction improves proteostasis and increases life span through endoplasmic reticulum hormesis. *Proc. Natl Acad. Sci. USA* **116**, 17383–17392 (2019).
150. Frakes, A. E. & Dillin, A. The UPR(ER): sensor and coordinator of organismal homeostasis. *Mol. Cell* **66**, 761–771 (2017).
151. Luis, N. M. et al. Intestinal IRE1 is required for increased triglyceride metabolism and longer lifespan under dietary restriction. *Cell Rep.* **17**, 1207–1216 (2016).
152. Dufey E. et al. Genotoxic stress triggers the selective activation of IRE1 α -dependent RNA decay to modulate the DNA damage response. *Nat. Commun.* In press (2020).
153. Huang, C. et al. Identification of XBP1-u as a novel regulator of the MDM2/p53 axis using an shRNA library. *Sci. Adv.* **3**, e1701383 (2017).
154. Zhang, K. et al. The unfolded protein response transducer IRE1 alpha prevents ER stress-induced hepatic steatosis. *EMBO J.* **30**, 1357–1375 (2011).
155. Yamamoto, K. et al. Induction of liver steatosis and lipid droplet formation in ATF6alpha-knockout mice burdened with pharmacological endoplasmic reticulum stress. *Mol. Biol. Cell* **21**, 2975–2986 (2010).
156. Rutkowski, D. T. et al. UPR pathways combine to prevent hepatic steatosis caused by ER stress-mediated suppression of transcriptional master regulators. *Dev. Cell* **15**, 829–840 (2008).
157. Zhang, K. et al. Endoplasmic reticulum stress activates cleavage of CREBH to induce a systemic inflammatory response. *Cell* **124**, 587–599 (2006).
158. Bailey, D. & O'Hare, P. Transmembrane bZIP transcription factors in ER stress signaling and the unfolded protein response. *Antioxid. Redox Signal.* **9**, 2305–2321 (2007).
159. Zhang, C. et al. Endoplasmic reticulum-tethered transcription factor cAMP responsive element-binding protein, hepatocyte specific, regulates hepatic lipogenesis, fatty acid oxidation, and lipolysis upon metabolic stress in mice. *Hepatology* **55**, 1070–1082 (2012).
160. Zheng, Z. et al. CREBH couples circadian clock with hepatic lipid metabolism. *Diabetes* **65**, 3369–3383 (2016).
161. Kim, H. et al. Regulation of hepatic autophagy by stress-sensing transcription factor CREBH. *FASEB J* **33**, 7896–7914 (2019).
162. Kim, H. et al. Liver-enriched transcription factor CREBH interacts with peroxisome proliferator-activated receptor alpha to regulate metabolic hormone FGF21. *Endocrinology* **155**, 769–782 (2014).
163. Kim, H., Zheng, Z., Walker, P. D., Kapatos, G. & Zhang, K. CREBH maintains circadian glucose homeostasis by regulating hepatic glycogenolysis and gluconeogenesis. *Mol. Cell Biol.* **37**, e00048-17 (2017).
164. Lee, M. W. et al. Regulation of hepatic gluconeogenesis by an ER-bound transcription factor, CREBH. *Cell Metab.* **11**, 331–339 (2010).
165. Lee, J. H. et al. The transcription factor cyclic AMP-responsive element-binding protein H regulates triglyceride metabolism. *Nat. Med.* **17**, 812–815 (2011).
166. Cefalu, A. B. et al. Novel CREB3L3 nonsense mutation in a family with dominant hypertriglyceridemia. *Arterioscler. Thromb. Vasc. Biol.* **35**, 2694–2699 (2015).
167. Harding, H. P. et al. Diabetes mellitus and exocrine pancreatic dysfunction in per α mice reveals a role for translational control in secretory cell survival. *Mol. Cell* **7**, 1153–1163 (2001).
168. Back, S. H. et al. Translation attenuation through eIF2alpha phosphorylation prevents oxidative stress and maintains the differentiated state in beta cells. *Cell Metab.* **10**, 13–26 (2009).
169. Lee, A. H., Chu, G. C., Iwakoshi, N. N. & Glimcher, L. H. XBP-1 is required for biogenesis of cellular secretory machinery of exocrine glands. *EMBO J.* **24**, 4368–4380 (2005).
170. Delpeche, M. et al. EIF2AK3, encoding translation initiation factor 2-alpha kinase 3, is mutated in patients with Wolcott-Rallison syndrome. *Nat. Genet.* **25**, 406–409 (2000).
171. Scheuner, D. et al. Control of mRNA translation preserves endoplasmic reticulum function in beta cells and maintains glucose homeostasis. *Nat. Med.* **11**, 757–764 (2005).
172. Song, B., Scheuner, D., Ron, D., Pennathur, S. & Kaufman, R. J. Chop deletion reduces oxidative stress, improves beta cell function, and promotes cell survival in multiple mouse models of diabetes. *J. Clin. Invest.* **118**, 3378–3389 (2008).
173. Ozcan, U. et al. Endoplasmic reticulum stress links obesity, insulin action, and type 2 diabetes. *Science* **306**, 457–461 (2004).
174. Fu, S. et al. Aberrant lipid metabolism disrupts calcium homeostasis causing liver endoplasmic reticulum stress in obesity. *Nature* **473**, 528–531 (2011).
175. Urra, H., Dufey, E., Avril, T., Chevet, E. & Hetz, C. Endoplasmic reticulum stress and the Hallmarks of cancer. *Trends Cancer* **2**, 252–262 (2016).
176. Lee, A. S. GRP78 induction in cancer: therapeutic and prognostic implications. *Cancer Res.* **67**, 3496–3499 (2007).
177. Chen, X. et al. XBP1 promotes triple-negative breast cancer by controlling the HIF1 alpha pathway. *Nature* **508**, 103–107 (2014).
178. Lhomond, S. et al. Dual IRE1 RNase functions dictate glioblastoma development. *EMBO Mol. Med.* **10**, e7929 (2018).
179. Lee, A. H., Iwakoshi, N. N., Anderson, K. C. & Glimcher, L. H. Proteasome inhibitors disrupt the unfolded protein response in myeloma cells. *Proc. Natl Acad. Sci. USA* **100**, 9946–9951 (2003).
180. Tang, C. H. et al. Inhibition of ER stress-associated IRE-1/XBP-1 pathway reduces leukemic cell survival. *J. Clin. Invest.* **124**, 2585–2598 (2014).
181. Hetz, C., Axten, J. M. & Patterson, J. B. Pharmacological targeting of the unfolded protein response for disease intervention. *Nat. Chem. Biol.* **15**, 764–775 (2019).
182. Sheng, X. et al. IRE1 alpha-XBP1s pathway promotes prostate cancer by activating c-MYC signaling. *Nat. Commun.* **10**, 523 (2019).
183. Wu, Y. et al. Dual role for inositol-requiring enzyme 1 alpha in promoting the development of hepatocellular carcinoma during diet-induced obesity in mice. *Hepatology* **68**, 533–546 (2018).
184. Rubio-Patino, C. et al. Low-protein diet induces IRE1 alpha-dependent anticancer immunosurveillance. *Cell Metab.* **27**, 828–842 (2018).
185. Niederreiter, L. et al. ER stress transcription factor Xbp1 suppresses intestinal tumorigenesis and directs intestinal stem cells. *J. Exp. Med.* **210**, 2041–2056 (2013).
186. Bi, M. et al. ER stress-regulated translation increases tolerance to extreme hypoxia and promotes tumor growth. *EMBO J.* **24**, 3470–3481 (2005).
187. Nguyen, H. G. et al. Development of a stress response therapy targeting aggressive prostate cancer. *Sci. Transl. Med.* **10**, eaar2036 (2018).
188. Bettigole, S. E. & Glimcher, L. H. Endoplasmic reticulum stress in immunity. *Annu. Rev. Immunol.* **33**, 107–138 (2015).
189. Zhang, K. et al. The unfolded protein response sensor IRE1 alpha is required at 2 distinct steps in B cell lymphopoiesis. *J. Clin. Invest.* **115**, 268–281 (2005).
190. Todd, D. J. et al. XBP1 governs late events in plasma cell differentiation and is not required for antigen-specific memory B cell development. *J. Exp. Med.* **206**, 2151–2159 (2009).
191. Bruning, R. et al. B- and T-cell development both involve activity of the unfolded protein response pathway. *J. Biol. Chem.* **283**, 17954–17961 (2008).
192. Iwakoshi, N. N., Pypaert, M. & Glimcher, L. H. The transcription factor XBP-1 is essential for the development and survival of dendritic cells. *J. Exp. Med.* **204**, 2267–2275 (2007).
193. Tavernier, S. J. et al. Regulated IRE1-dependent mRNA decay sets the threshold for dendritic cell survival. *Nat. Cell Biol.* **19**, 698–710 (2017).
194. Dong, H. et al. The IRE1 endoplasmic reticulum stress sensor activates natural killer cell immunity in part by regulating c-Myc. *Nat. Immunol.* **20**, 865–878 (2019).
195. Wu, S. et al. Ultraviolet light activates NFkappaB through translational inhibition of IkkappaBalpha synthesis. *J. Biol. Chem.* **279**, 34898–34902 (2004).
196. Deng, J. et al. Translational repression mediates activation of nuclear factor kappa B by phosphorylated translation initiation factor 2. *Mol. Cell Biol.* **24**, 10161–10168 (2004).
197. Iwasaki, Y. et al. Activating transcription factor 4 links metabolic stress to interleukin-6 expression in macrophages. *Diabetes* **63**, 152–161 (2014).
198. Gargalovic, P. S. et al. The unfolded protein response is an important regulator of inflammatory genes in endothelial cells. *Arterioscler. Thromb. Vasc. Biol.* **26**, 2490–2496 (2006).
199. Wheeler, M. A. et al. Environmental control of astrocyte pathogenic activities in CNS inflammation. *Cell* **176**, 581–596 (2019).
200. Shan, B. et al. The metabolic ER stress sensor IRE1 alpha suppresses alternative activation of macrophages and impairs energy expenditure in obesity. *Nat. Immunol.* **18**, 519–529 (2017).
201. Martinez, G., Khatawada, S., Costa-Mattioli, M. & Hetz, C. ER proteostasis control of neuronal physiology and synaptic function. *Trends Neurosci.* **41**, 610–624 (2018).
202. Sidrauski, C. et al. Pharmacological brake-release of mRNA translation enhances cognitive memory. *eLife* **2**, e00498 (2013).
203. Martinez, G. et al. Regulation of memory formation by the transcription factor XBP1. *Cell Rep.* **14**, 1382–1394 (2016).
204. Lagusse, S. et al. A dynamic unfolded protein response contributes to the control of cortical neurogenesis. *Dev. Cell* **35**, 553–567 (2015).
205. Fox, J. W. et al. Mutations in filamin 1 prevent migration of cerebral cortical neurons in human periventricular heterotopia. *Neuron* **21**, 1315–1325 (1998).
206. Hayashi, A., Kasahara, T., Kametani, M. & Kato, T. Attenuated BDNF-induced upregulation of GABAergic markers in neurons lacking Xbp1. *Biochem. Biophys. Res. Commun.* **376**, 758–763 (2008).
207. Hetz, C. & Saxena, S. ER stress and the unfolded protein response in neurodegeneration. *Nat. Rev. Neurol.* **13**, 477–491 (2017).
208. Freeman, O. J. & Mallucci, G. R. The UPR and synaptic dysfunction in neurodegeneration. *Brain Res.* **1648**, 530–537 (2016).

209. Halliday, M. et al. Repurposed drugs targeting eIF2 α -P-mediated translational repression prevent neurodegeneration in mice. *Brain* **140**, 1768–1783 (2017).
210. Moreno, J. A. et al. Sustained translational repression by eIF2 α -P mediates prion neurodegeneration. *Nature* **485**, 507–511 (2012).
211. Valdes, P. et al. Control of dopaminergic neuron survival by the unfolded protein response transcription factor XBP1. *Proc. Natl Acad. Sci. USA* **111**, 6804–6809 (2014).
212. Hetz, C. et al. XBP-1 deficiency in the nervous system protects against amyotrophic lateral sclerosis by increasing autophagy. *Genes Dev.* **23**, 2294–2306 (2009).
213. Vidal, R. L. et al. Targeting the UPR transcription factor XBP1 protects against Huntington's disease through the regulation of FoxO1 and autophagy. *Hum. Mol. Genet.* **21**, 2245–2262 (2012).
214. Duran-Aniotz, C. et al. IRE1 signaling exacerbates Alzheimer's disease pathogenesis. *Acta Neuropathol.* **134**, 489–506 (2017).
215. Hetz, C. et al. Unfolded protein response transcription factor XBP-1 does not influence prion replication or pathogenesis. *Proc. Natl Acad. Sci. USA* **105**, 757–762 (2008).
216. Valenzuela, V. et al. Activation of the unfolded protein response enhances motor recovery after spinal cord injury. *Cell Death Dis.* **3**, e272 (2012).
217. Onate, M. et al. Activation of the unfolded protein response promotes axonal regeneration after peripheral nerve injury. *Sci. Rep.* **6**, 21709 (2016).
218. Valenzuela, V., Jackson, K. L., Sardi, S. P. & Hetz, C. Gene therapy strategies to restore ER proteostasis in disease. *Mol. Ther.* **26**, 1404–1413 (2018).
219. Belyy, V., Tran, N. H. & Walter, P. Quantitative microscopy reveals dynamics and fate of clustered IRE1 α . *Proc. Natl Acad. Sci. USA* **117**, 1533–1542 (2020).
220. Hughes, D. & Mallucci, G. R. The unfolded protein response in neurodegenerative disorders - therapeutic modulation of the PERK pathway. *FEBS J.* **286**, 342–355 (2019).
221. Axten, J. M. et al. Discovery of GSK2656157: an optimized PERK inhibitor selected for preclinical development. *ACS Med. Chem. Lett.* **4**, 964–968 (2013).
222. Spaan, C. N. et al. Expression of UPR effector proteins ATF6 and XBP1 reduce colorectal cancer cell proliferation and stemness by activating PERK signaling. *Cell Death Dis.* **10**, 490 (2019).
223. Kohl, S. et al. Mutations in the unfolded protein response regulator ATF6 cause the cone dysfunction disorder achromatopsia. *Nat. Genet.* **47**, 757–765 (2015).
224. Richardson, P. G., Mitsiadis, C., Hideshima, T. & Anderson, K. C. Bortezomib: proteasome inhibition as an effective anticancer therapy. *Annu. Rev. Med.* **57**, 33–47 (2006).
225. Shiu, R. P., Pouyssegur, J. & Pastan, I. Glucose depletion accounts for the induction of two transformation-sensitive membrane proteins in Rous sarcoma virus-transformed chick embryo fibroblasts. *Proc. Natl Acad. Sci. USA* **74**, 3840–3844 (1977).
226. Haas, I. G. & Wabl, M. Immunoglobulin heavy chain binding protein. *Nature* **306**, 387–389 (1983).
227. Munro, S. & Pelham, H. R. An Hsp70-like protein in the ER: identity with the 78 kd glucose-regulated protein and immunoglobulin heavy chain binding protein. *Cell* **46**, 291–300 (1986).
228. Fornace, A. J. Jr. et al. Mammalian genes coordinately regulated by growth arrest signals and DNA-damaging agents. *Mol. Cell Biol.* **9**, 4196–4203 (1989).
229. Kozutsumi, Y., Segal, M., Normington, K., Gething, M. J. & Sambrook, J. The presence of misfolded proteins in the endoplasmic reticulum signals the induction of glucose-regulated proteins. *Nature* **332**, 462–464 (1988).
230. Dörner, A. J., Wasley, L. C. & Kaufman, R. J. Increased synthesis of secreted proteins induces expression of glucose-regulated proteins in butyrate-treated Chinese hamster ovary cells. *J. Biol. Chem.* **264**, 20602–20607 (1989).
231. Cox, J. S., Shamu, C. E. & Walter, P. Transcriptional induction of genes encoding endoplasmic reticulum resident proteins requires a transmembrane protein kinase. *Cell* **73**, 1197–1206 (1993).
232. Mori, K., Ma, W., Gething, M. J. & Sambrook, J. A transmembrane protein with a cdc2+/CDC28-related kinase activity is required for signaling from the ER to the nucleus. *Cell* **74**, 743–756 (1993).
233. Cox, J. S. & Walter, P. A novel mechanism for regulating activity of a transcription factor that controls the unfolded protein response. *Cell* **87**, 391–404 (1996).
234. Tirasophon, W., Welihinda, A. A. & Kaufman, R. J. A stress response pathway from the endoplasmic reticulum to the nucleus requires a novel bifunctional protein kinase/endoribonuclease (Ire1p) in mammalian cells. *Genes Dev.* **12**, 1812–1824 (1998).
235. Wang, X. Z. et al. Cloning of mammalian Ire1 reveals diversity in the ER stress responses. *EMBO J.* **17**, 5708–5717 (1998).
236. Liou, H. C. et al. A new member of the leucine zipper class of proteins that binds to the HLA DR α promoter. *Science* **247**, 1581–1584 (1990).
237. Shi, Y. et al. Identification and characterization of pancreatic eukaryotic initiation factor 2 α -subunit kinase, PEK, involved in translational control. *Mol. Cell Biol.* **18**, 7499–7509 (1998).
238. Yoshida, H., Haze, K., Yanagi, H., Yura, T. & Mori, K. Identification of the cis-acting endoplasmic reticulum stress response element responsible for transcriptional induction of mammalian glucose-regulated proteins. Involvement of basic leucine zipper transcription factors. *J. Biol. Chem.* **273**, 33741–33749 (1998).
239. Wu, H., Carvalho, P. & Voeltz, G. K. Here, there, and everywhere: the importance of ER membrane contact sites. *Science* **361** (2018).
240. Theurey, P. & Rieusset, J. Mitochondria-associated membranes response to nutrient availability and role in metabolic diseases. *Trends Endocrinol. Metab.* **28**, 32–45 (2017).
241. Novikoff, A. B., Novikoff, P. M., Rosen, O. M. & Rubin, C. S. Organelle relationships in cultured 3T3-L1 preadipocytes. *J. Cell Biol.* **87**, 180–196 (1980).
242. Rambold, A. S., Cohen, S. & Lippincott-Schwartz, J. Fatty acid trafficking in starved cells: regulation by lipid droplet lipolysis, autophagy, and mitochondrial fusion dynamics. *Dev. Cell* **32**, 678–692 (2015).
243. Settembre, C., Fraldi, A., Medina, D. L. & Ballabio, A. Signals from the lysosome: a control centre for cellular clearance and energy metabolism. *Nat. Rev. Mol. Cell Biol.* **14**, 283–296 (2013).

Acknowledgements

The authors thank H. Urra for initial figure and table design. This work was directly funded by ANID/FONDAP/15150012, the Chilean Millennium Institute of Biomedical Neuroscience Institute BNI (grant P09-015-F), CONICYT–Brazil 441921/2016-7, FONDEF ID16110223, FONDEF D11E1007 and FONDECYT 1180186 (C.H.). In addition, the authors thank the US Air Force Office of Scientific Research (grant FA9550-16-1-0384) (C.H.), the Michael J Fox Research Foundation, Target Validation Grant 12473.01 and ECOS CONICYT Cooperation grant Chile-France ECOS170032 (C.H.), the US National Institutes of Health (grants DK090313 and AR066634) (K.Z.) and the American Heart Association (grants 0635423Z and 09GRNT2280479) (K.Z.) for support. The authors acknowledge support from National Institutes of Health/National Cancer Institute grants R01DK113171, R01DK103185, R24DK110973, R01AG06219 and R01CA198103 and the Sanford Burnham Prebys Cancer Center grant P30 CA030199 (R.J.K.). R.J.K. is a member of the University of California, San Diego Diabetes Research Center (P30 DK063491) and an adjunct professor in the Department of Pharmacology, University of California, San Diego. The authors thank J. Yong and C. Lebeau for critical comments on the manuscript.

Author contributions

The authors contributed equally to the writing and revisions of the article.

Competing interests

The authors declare no competing interests.

Publisher's note

Springer Nature remains neutral with regard to jurisdictional claims in published maps and institutional affiliations.

Supplementary information

Supplementary information is available for this paper at <https://doi.org/10.1038/s41580-020-0250-z>.

© Springer Nature Limited 2020