



HENRY®

Made In America, Or Not Made At All

HenryUSA™

Henry Big Boy .357 Mag / .44 Mag / .45 Colt / .41 Mag / .327 Mag

Instruction Manual for All H006 and H012 Series Rifles and Pistols



Important:

Study this instruction manual carefully before you handle this firearm.

Made in America



IS A REGISTERED TRADEMARK
OF THE HENRY REPEATING ARMS COMPANY

TEL. **201-858-4400** | FAX. **201-858-4435**

WEBSITE. **www.henryusa.com**

WARNING: BEFORE USING FIREARM, READ AND FOLLOW THESE INSTRUCTIONS.

If there is anything you do not understand,
get help from someone qualified to teach the safe handling of firearms.

THE HENRY GUARANTEE

Thank you very much for spending your hard earned money to purchase a Henry. I certainly appreciate it and welcome you to the Henry family. As an owner of a Henry, you are backed by our lifetime warranty and my personal guarantee for 100% satisfaction. I will do what it takes to make certain you are happy with your purchase.

Sincerely,

Anthony Imperato

Henry Repeating Arms

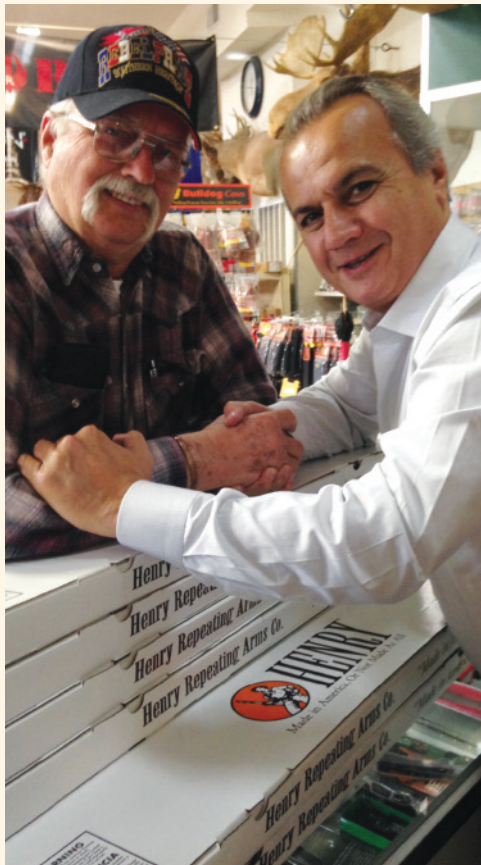
Telephone: 201.858.4400

Web: www.henryusa.com/contact

We are confident that you'll enjoy and be proud to own any of our Henry firearms, well known for their reliability, accuracy, handsome looks and smooth action.

Our goal has and always will be to manufacture a line of classic, well-crafted firearms that every enthusiast would find readily affordable.

We take great pride in manufacturing our shotguns in the United States, hence our corporate motto "Made in America, or Not Made at All".



HENRY[®]
Made In America,
Or Not Made At All

Use the space below to record information about your new firearm.

Serial Number* _____

Caliber _____

Purchase Price _____

Purchased From _____

Date of Purchase _____

*The serial number is located on the top of the receiver. Record this number in this manual for future reference.

Henry Repeating Arms Company
59 East 1st Street
Bayonne, NJ 07002

If you have any questions or comments regarding your new Henry firearm, please feel free to write or call us.

SIMPLE LIMITED LIFETIME WARRANTY ON ALL HENRY FIREARMS

It is our promise to you that as long as you own your Henry firearm, it will be free from defects in material and workmanship from the manufacturer. If you have a problem with your Henry firearm, we will fix it at no charge to you. Henry Repeating Arms shall repair, send replacement parts or replace the firearm with a valid warranty claim. If a complete replacement is necessary, the original firearm will not be returned. Henry RAC will provide repairs or replacement at no charge, but will not offer cash, credit, or refund.

WE RESERVE THE RIGHT TO REFUSE SERVICE ON FIREARMS THAT HAVE BEEN ALTERED, ADDED TO, OR SUBSTANTIALLY CHANGED. Removal of metal from the barrel, or modifications of the firing mechanism and/or operating parts, may lead to a refusal of service on such firearms. There will be a charge for parts and labor to return the firearm to original specifications.

DO NOT, UNDER ANY CIRCUMSTANCES, ALTER THE TRIGGER, "SAFETY" OR OTHER PARTS OF FIRING MECHANISM OF THIS OR ANY OTHER FIREARM. FAILURE TO OBEY THIS WARNING MAY RESULT IN INJURY OR DEATH.

NOTICE: Henry RAC shall not be responsible for injury, death, or damage to property resulting from either intentional or accidental discharge of this firearm, or from its function when used for purposes or subjected to treatment for which it is not designed.

Whether or not you are experienced in the safe handling of firearms, we urge you to read this entire instruction manual carefully. You must follow the safety instructions for your safety and the safety of others. Should you have any questions concerning the instructions in this manual, please call us at 201-858-4400.

WARNING: If you have little or no experience in the safe handling and operation of a firearm, we strongly urge you to take a firearms safety course from an NRA Certified Instructor or someone with equivalent qualifications before using this or any other firearm. You can contact the NRA Firearms Education and Safety Division at 703-267-1470 for the name of an instructor in your area, or contact your firearms dealer, law enforcement agency or local sportsman's club for training.

Table of Contents

| | |
|--|----|
| Gun Safety and Handling | 4 |
| Shooting Cautions | 5 |
| Terminology | 5 |
| Specs | 6 |
| Ammunition | 6 |
| Operating Instructions | |
| How To Use the Safety | 7 |
| Maintenance Before Use | 7 |
| How To Load Your Henry | 8 |
| How To Operate Your Henry | 8 |
| How To Unload Your Henry | 8 |
| How To Adjust Your Sights | 9 |
| Malfunction | 9 |
| Cleaning, Maintenance & Storage | |
| How To Clean Your Henry | 10 |
| Maintenance Before Storage | 11 |
| Storage Safety | 12 |
| Parts | 13 |
| Service and Repair | 15 |

GENERAL GUN SAFETY HANDLING

Apply the following safety rules in every situation, with any kind of firearm:

ALWAYS TREAT EVERY FIREARM AS IF IT IS LOADED AND WILL FIRE. Do not take anyone's word that the firearm is unloaded - always check for yourself. Never pass your firearm to another person until the cylinder or action is open and you visually check that it is unloaded. Keep your firearm unloaded and safely stored when not in use.

ALWAYS BE SURE OF YOUR TARGET AND WHAT IS BEYOND. A bullet could travel through or past your target for up to 1 ½ miles. Always be sure your backstop is adequate to stop and contain bullets before beginning target practice so that you do not hit anything outside the range shooting area. If in doubt, don't shoot! Do not fire randomly into the sky.

NEVER SHOOT ACROSS A HIGHWAY OR ANOTHER ROADWAY.

ALWAYS POINT YOUR FIREARM IN A SAFE DIRECTION. NEVER point a firearm at anyone or anything you do not intend to shoot whether or not it is loaded. This is particularly important when loading, unloading, or field stripping the firearm. **ALWAYS** control the direction of the firearm; if it fires accidentally, injury, death, or damage to property can be avoided.

NEVER PLACE YOUR FINGER INSIDE THE TRIGGER GUARD OR ON THE TRIGGER UNLESS YOU INTEND TO FIRE. You should also take care to ensure that other objects do not touch the trigger.

NEVER USE ALCOHOL OR DRUGS BEFORE OR WHILE SHOOTING. Your vision, motor skills and judgment could be dangerously impaired, making your gun handling unsafe to you and to others. Further, do not use your firearm if you are on any medication which impairs, even slightly, your mental or physical ability.

ALWAYS SEEK A DOCTOR'S ADVICE IF YOU ARE TAKING MEDICATION. Be sure you are fit to shoot and handle your firearm safely.

NEVER SHOOT AT A HARD SURFACE SUCH AS A ROCK OR A LIQUID SURFACE SUCH AS WATER. A bullet may ricochet and travel in any direction to strike you or an object you cannot see, causing injury, death or damage to property.

NEVER DISCHARGE A FIREARM NEAR FLAMMABLE MATERIAL. Flame and sparks erupt from the firearm when discharged. They could start a fire or cause flammable liquids to explode.

ALWAYS BE AWARE OF POSSIBLE RISK FROM DROPPING YOUR FIREARM. Some parts of the mechanism could be damaged. You may not see the damage, but it could be severe. The firearm may discharge and cause injury, death, or damage to property. If your firearm has been dropped, have it examined by a competent gunsmith before using it again.

ALWAYS KEEP AND CARRY YOUR FIREARM EMPTY WITH THE HAMMER IN THE "SAFE" POSITION except when you intend to shoot, so that your firearm cannot be fired when you do not intend to fire it.

NEVER CROSS OBSTACLES SUCH AS FENCES OR STREAMS WITH A LOADED FIREARM. Always make certain your firearm is unloaded before crossing a fence, climbing a tree, jumping a ditch or approaching other obstacles.

NEVER TRANSPORT A LOADED FIREARM. Keep all firearms unloaded during transport, even when stored in a holster, gun case, scabbard or other container.

NEVER WALK, CLIMB, OR FOLLOW A COMPANION WITH YOUR FIREARM COCKED AND READY TO FIRE. When

hunting, hold your firearm so that you can always control the direction of the muzzle.

NEVER LEAVE A LOADED FIREARM UNATTENDED. Someone, especially a child, may fire it and cause injury, death, or damage to property.

ALWAYS INSTRUCT CHILDREN AND NON SHOOTERS TO RESPECT FIREARMS. If you teach your children to shoot or get them trained by a qualified instructor, be certain they know how to use the firearm properly and always supervise them closely. Always stress safety so that your children or others will not fire a rifle when or where it is unsafe to do so.

RANGE AND SHOOTING CAUTIONS

ALWAYS DESIGNATE A KNOWLEDGEABLE AND RESPONSIBLE PERSON TO BE IN CHARGE TO MAINTAIN SAFETY CONTROL WHEN A GROUP IS FIRING ON A RANGE. Obey their commands so that discipline is maintained to reduce the possibility of accidents.

ALWAYS CARRY YOUR FIREARM EMPTY WITH THE ACTION OPEN WHILE ON A RANGE until preparing to fire and keep it pointing towards the backstop when loading, firing, and unloading to eliminate the risk of injury, death or damage to property.

ALWAYS KEEP THE HAMMER IN THE UNCOCKED POSITION UNTIL YOU ARE READY TO FIRE. This will minimize the risk of an accidental discharge.

ALWAYS WEAR EYE AND EAR PROTECTION SPECIFIED FOR USE WITH FIREARMS. Flying particles could damage eyes and cause blindness. Without ear protection, the noise of even one shot from your rifle and from other guns close to you could leave a "ringing" in the ears for some time after firing and the cumulative long term effect could be permanent hearing loss. Make sure others in the vicinity of where you are shooting are doing so as well.

ALWAYS KEEP CLEAR AND KEEP OTHERS CLEAR OF THE EJECTION PORT. Spent shells are ejected with enough force to cause injury. The ejection port must also be unobstructed by your hand to insure safe ejection of spent rounds. Never place fingers in ejection port - they could be burned by hot metal or injured by the bolt moving forward.

NEVER PUT YOUR FINGER INSIDE THE TRIGGER GUARD UNTIL YOU ARE AIMING AT A TARGET AND READY TO SHOOT. This will prevent you from firing the firearm when it is pointing in an unsafe direction.

NEVER JOKE AROUND OR ENGAGE IN "HORSEPLAY" WHILE HANDLING YOUR FIREARM. Doing so could cause an accidental discharge.

TERMINOLOGY AND DESCRIPTIONS

Congratulations on your purchase of your Henry Big Boy (All H006 and H012 Models).

Your rifle has been made to Henry Repeating Arms strict standards of safety and reliability. It has been proof tested and function fired at the factory.



SPECS

ACTION TYPE

BIG BOY RIFLE

CALIBERS

.41 MAG

.44 MAG/.44 SPL

.45 COLT

.357 MAG/.38 SPL

.327 FED MAG

CAPACITY

MARE'S LEG - 5 ROUNDS

CARBINE - 7 ROUNDS

STANDARD - 10 ROUNDS

BARREL LENGTH/TYPE

MARE'S LEG - 12.904" - OCTAGON

CARBINE - 16.5" - OCTAGON OR ROUND

STANDARD - 20" - OCTAGON OR ROUND

RATE OF TWIST

.41 MAG - 1:18

.44 MAG/.44 SPL - 1:20

.45 COLT - 1:16

.357 MAG/.38 SPL - 1:16

.327 FED MAG - 1:16

OVERALL LENGTH

MARE'S LEG - 25"

CARBINE - 35"

STANDARD - 38.5"

WEIGHT

MARE'S LEG - 5.79 LBS

CARBINE OCTAGON BARREL - 7.76

LBS/ROUND - 6.59LBS

STANDARD OCTAGON

BARREL - 8.68 LBS/ROUND - 7.0 LBS

REAR SIGHT

FULLY ADJUSTABLE BUCKHORN

W/DIAMOND INSERT

FRONT SIGHT

BRASS BEAD

SCOPEABILITY

DRILLED AND TAPPED FOR BB-RSM

STOCK

MARE'S LEG - AMERICAN WALNUT

PISTOL GRIP

H006 MODELS - AMERICAN WALNUT

STRAIGHT GRIP

H012 MODELS - AMERICAN WALNUT

CHECKERED STRAIGHT GRIP

H012 ALL WEATHER - AMERICAN

HARDWOOD STRAIGHT GRIP

BUTTPLATE/PAD

H006 MODELS - BRASS OR BRIGHT

SILVER

H012 MODELS - BLACK SOLID

RUBBER RECOIL PAD

LENGTH OF PULL

14" (N/A FOR MARE'S LEG)

SAFETY

TRANSFER BAR

AMMUNITION

The calibers and capacity of models H006 and H012 are as follows:

.357 Magnum/.38 Spl 10 Rounds, Carbine - 7 Rounds

.357 Magnum is designed with .357 Magnum cartridges in mind. While you can use .38S&W loads, you must ensure they are 158GR with an overall length that closely mimics the .357 Magnum cartridge. Due to the shoulder location on the carrier, the gun will not feed: 110GR, 125GR, 130GR, etc. .38 special loads reliably.

.327 Fed Mag/.32 H&R Mag 10 Rounds, Carbine - 7 Rounds

.41 Magnum 10 Rounds, Carbine - 7 Rounds

.44 Magnum 10 Rounds, Carbine - 7 Rounds

Use a .44 Magnum cartridge. The .44 S&W Special cartridge can also be fired.

.45 Colt 10 Rounds, Carbine - 7 Rounds

The .45 Colt is chambered for the .45 Colt cartridge (not .45ACP).

Mare's Leg Pistols 5 Rounds

DO NOT USE BLAZER OR OTHER ALUMINUM CASED AMMUNITION IN THIS RIFLE.

AMMUNITION SELECTION

If you are unsure of the caliber rifle you have, we suggest that you read the rollmark on the barrel to identify the caliber.

ALWAYS USE THE CORRECT AMMUNITION FOR YOUR PARTICULAR FIREARM.

Henry Repeating Arms Firearms are designed to function with a variety of brands and types of factory manufactured ammunition in the appropriate caliber, but not all ammunition produces the same result. Be sure the only ammunition you carry correctly matches the gauge or caliber you are shooting. Never use non-standard, reloaded, or "hand-loaded" ammunition which has not been subjected to internal ballistic pressure testing. Henry RAC recommends that after you read and understand this manual, you go to the range and fire different ammunition which is appropriate to the caliber of your firearm. Once you find the ammunition which functions best, keep using it.

OPERATING INSTRUCTIONS FOR YOUR HENRY HENRY BIG BOY RIFLE



TRANSFER BAR SAFETY

This firearm is designed with an ultra-safe patented Transfer Bar Safety Mechanism. This safety system prevents the gun from being fired under all circumstances, except when the hammer is fully cocked and the trigger is pulled. If the hammer is fully cocked and the trigger is pulled, the gun would fire as normal. However, if the hammer is fully cocked and is accidentally dislodged by some other means other than the trigger being pulled, the gun will not fire. If the hammer is in the process of being cocked and is accidentally released and dropped into the fired down position, before it is fully cocked, the gun will not fire. This rifle can be safely carried fully loaded with the hammer in the fired down resting position. Please note that this rifle does not have a half cock safety position nor a crossbolt safety. If you do not have a full understanding of how the safety system works,

please call us immediately at 201-858-4400 and ask for technical assistance.

MAINTENANCE BEFORE USE

Before using your firearm for the first time, it should be cleaned. (See the cleaning instructions.) Your firearm was treated at the factory with either a preservative or oil to protect it against corrosion during shipping and storage. Preservative and oil should be wiped from the bore, chamber and exposed areas using a clean swab or patch before using the firearm.

Purchase cleaning supplies that are specifically designated for your type and caliber of firearm. Many suppliers offer

these in kit form for your convenience. Follow the instructions provided. Whenever your firearm has been exposed to sand, dust, extreme humidity, water or other adverse conditions, it should be cleaned and lubricated.

PRIOR TO **LOADING YOUR HENRY BIG BOY RIFLE**

Prior to loading your rifle, make certain that it is not already loaded. Point the muzzle in a safe direction, swing the lever down, and pull it back. If a cartridge ejects, proceed with directions on how to unload the magazine tube and empty the chamber. We recommend that you always load a completely unloaded firearm, and clear the firearm of any cartridges prior to loading. Assuming that you are now operating an unloaded firearm, make certain that the barrel, receiver and chamber are free from any obstruction.

LOADING/UNLOADING CAUTIONS

ALWAYS BE SURE BARREL, BORE, CHAMBER, AND ACTION ARE CLEAN AND CLEAR OF OBSTRUCTIONS. Clean a fouled firearm immediately so that it will function correctly and safely.

ALWAYS USE ONLY CLEAN, DRY, HIGH-QUALITY, COMMERCIALY MANUFACTURED AMMUNITION IN GOOD CONDITION AND APPROPRIATE TO THE CALIBER OF YOUR FIREARM. Gun and ammunition manufacturers design their products within exacting engineering safety limits. Handloads and remanufactured ammunition are sometimes outside those limits and could blow up the chamber, bolt and receiver of any firearm and cause injury, death or damage to property.

HOW TO LOAD YOUR HENRY BIG BOY RIFLE

This rifle is a tubular feed design, using a brass inner magazine tube. Cartridges are loaded into the cutout in the blued outer magazine tube located underneath the barrel. **Important - when loading the action must be closed with the hammer in the uncocked position (fired down position).** Rotate the inner magazine tube to disengage. Pull the inner magazine tube out until the follower (the black part at the end of the inner magazine tube) clears the loading port in the outer magazine tube. You can either remove the brass inner magazine tube completely or keep it positioned in the outer magazine tube just past the loading port. With the muzzle pointed upward, insert the rimmed end of the cartridges into the loading port in the outer magazine tube and allow them to slide down towards the action. **Do not exceed the capacity of the magazine.** Next, push the inner magazine tube back down into position, and lock it into place. The rifle is now ready for operation.

HOW TO OPERATE YOUR HENRY BIG BOY RIFLE

The rifle chamber can now be loaded by swinging the lever down completely, and pulling it back into a closed position. The hammer has been moved into the cocked position and the rifle is now ready to fire. If you are not yet ready to fire, then place your thumb on the hammer, and disengage the hammer by pulling the trigger slightly rearward. Immediately release the trigger while still holding the hammer, and bring the hammer into the fired down position. You now have the gun in loaded but safe to carry position. If you want to fire the gun, bring the hammer back to the cocked position, aim in a safe direction at your target, and pull the trigger.

HOW TO UNLOAD THE MAGAZINE AND CHAMBER OF YOUR HENRY BIG BOY RIFLE

To unload the magazine and chamber, the hammer should be resting in the fired down position. With the rifle pointing upward, withdraw the inner magazine tube. Tip the gun downward, allowing cartridges to slide out into

a container. Before replacing the inner magazine tube, always check it to be certain that no cartridges are stuck in the magazine tube. Open the action again, by cycling the lever, to make certain that there are no cartridges in the chamber. Cycle the action multiple times to insure that no live rounds remain in the chamber.

SIGHTS AND SIGHT ADJUSTMENTS

HIGH OR LOW (ELEVATION ADJUSTMENT)

Your rifle is equipped with a fully adjustable rear sight. Adjust the rear sight to shoot higher or lower, as well as to adjust for windage (left and right). Your rifle can be adjusted to shoot higher by moving the rear sight elevator.

In order to shoot lower, the elevator should be moved away from you.

There is a secondary adjustment in the white diamond insert of the rear sight. Loosen the screw to the right of the white diamond, raise or lower as needed to correct elevation, then re-tighten the screw. To adjust your rifle for windage (left & right), you need to tap the rear sight to the left or right as desired. If you are shooting to the left, you need to move the rear sight to the right and vice versa. A minor adjustment will correct the point of impact.

The base of the rear sight is dove-tailed into a groove on the barrel.

LEFT OR RIGHT (WINDAGE ADJUSTMENT)

To make horizontal adjustments, the entire dove-tailed base must be moved right or left in its slot on the barrel. Current models will have a screw on the front of the rear sight assembly. This screw must be loosened, prior to attempting adjustment. To do this, carefully use a brass or nylon punch, slightly pointed but having a blunt tip appropriate in size to properly engage the left or right end of the sight base where it slides in the groove on the barrel. Gently tap the punch with a light hammer and be very careful not to mar or damage the receiver or sight base. To help you determine how far you have moved the sight, right or left, a soft pencil can be used. The front edge of the rear sight base comes to a point where it rests on the barrel. At the point of the sight base, lightly make a small mark with a pencil and carry it straight down to make a small adjoining mark. This will show you how far to the right or left you have moved the sight base.

When your adjustments are completed, the pencil marks can easily be wiped off with a lightly-oiled, soft cloth.

All Big Boy rifles are drilled and tapped for easy scope mounting. The rear sight must be removed to see these mounting holes. You can order the mount for your rifle calling us at Henry Pride at 201-455-5554 or visiting our online store www.henrypride.com.

WARNING: REMOVAL AND FAILURE TO RE-INSTALL THE LOCKING BOLT (PART 35) IS EXTREMELY DANGEROUS.

MALFUNCTION CAUTIONS

FAILURE TO FIRE: IF THE FIREARM FAILS TO FIRE DO NOT PUT IT DOWN OR OPEN THE ACTION. ALWAYS HOLD THE FIREARM, KEEPING IT POINTED IN A SAFE DIRECTION AND WAIT 30 SECONDS. IF A HANGFIRE (SLOW IGNITION) HAS OCCURRED, THE ROUND WILL FIRE WITHIN 30 SECONDS. If the round does not fire, remove the ammunition, eject the round and examine the cartridge. If the firing pin indent on the primer is light

or non-existent, have the firearm examined by a competent gunsmith before firing again. If the firing pin indent on the rim appears normal (in comparison with similar previously fired rounds) assume you have faulty ammunition. Segregate the misfired round from other live firearm ammunition and empty cases, reload, and carry on firing.

Note: Dispose of misfired rounds in accordance with ammunition manufacturer's instructions.

NEVER USE YOUR FIREARM IF IT FAILS TO FUNCTION PROPERLY, AND NEVER FORCE A JAMMED ACTION. Forcing the action could make the round explode, causing serious injury, possible death, or severe damage to your firearm or other property.

CLEANING, STORAGE AND MAINTENANCE

CLEANING SAFETY PRECAUTIONS

WARNING: BEFORE PERFORMING CLEANING PROCEDURES, MAKE SURE THE HAMMER IS IN THE FIRED-DOWN POSITION, WHICH ALLOWS YOUR SAFETY TO FUNCTION AS DESIGNED. OPEN THE ACTION AND MAKE CERTAIN YOUR FIREARM IS COMPLETELY UNLOADED. KEEP THE MUZZLE POINTED IN A SAFE DIRECTION. FAILURE TO FOLLOW THESE WARNINGS COULD RESULT IN SERIOUS INJURY OR DEATH.

KEEP ALL AMMUNITION AWAY FROM THE CLEANING AREA. NEVER TEST THE MECHANICAL FUNCTION OF YOUR RIFLE WITH LIVE AMMUNITION. FAILURE TO FOLLOW THESE WARNINGS COULD RESULT IN SERIOUS INJURY OR DEATH.

NOTICE! It is very important that the bore of your rifle be cleaned thoroughly and promptly after shooting. Do not leave discharged (empty) cases in the chambers for any length of time, as the chemical composition of many cartridges contain moisture which can "sweat" out of the shell and onto the chambers' surfaces, and possibly cause corrosion and rust.

HOW TO CLEAN YOUR HENRY

WE SUGGEST THAT YOU USE A MILD SOLVENT FROM A WELL-KNOWN BRAND. FOR CONVENIENCE, COMPATIBLE CLEANING SOLVENTS ARE AVAILABLE ON WWW.HENRYPRIDE.COM.

Regular cleaning is important in order for your gun to operate efficiently and safely. Taking proper care of it will also maintain its value and extend its life.

NOTICE! DO NOT ATTEMPT TO TAKE YOUR FIREARM APART FURTHER THAN EXPLAINED IN THIS MANUAL. Your firearm is a specialized, finely fitted mechanism. You may permanently damage it by attempting to disassemble the inner mechanisms. If further disassembly for service or cleaning is required, take your firearm to a qualified gunsmith.

IMPORTANT - PLEASE NOTE THAT IT IS NOT NECESSARY TO TAKE YOUR HENRY LEVER ACTION APART TO KEEP IT CLEAN.

IMPORTANT - DO NOT USE AGGRESSIVE SOLVENTS.

Your gun should be cleaned every time it is used. A minimum cleaning includes wiping down the action and oiling key parts. Regular maintenance will also include cleaning the barrel.

For cleaning, we suggest that you first open the action by cycling the lever forward. Inspect the chamber and bore for brass, copper and powder fouling. A normal amount of powder residue can be expected and is not serious. It can usually be removed by the following procedure.

WHENEVER POSSIBLE, CLEAN THE BORE IN THE DIRECTION OF BULLET TRAVEL. When you fire your gun, powder residue is deposited into the barrel bore. Improperly cleaning from muzzle to breech will cause this powder residue to be carried from the bore into the chamber and action, causing fouling of intricate parts and warranting more thorough cleaning by a qualified gunsmith. To properly clean from breech to muzzle, use a pull-through cleaning kit, such as those available on www.henrypride.com.

NOTE: USE A CLEAN PATCH EACH TIME YOU GO DOWN THE BARREL.

NEVER GO BACK AND FORTH REVERSING THE BRUSH. This will bend the bristles on the brush. This is the equivalent of bending a wire back and forth until it breaks.

USE ONLY A FEW DROPS OF SOLVENT/LUBRICANT OIL. Use only the amount of solvent that the patch will absorb. If you use too much, the solvent or oil will drip down into the trigger mechanism; this will cause a gummy trigger. If you use too much oil, it will drain back toward the stock and could cause premature failure of the wood.

NEVER RUN A BRUSH IN THE BARREL FIRST. This will damage the firearm. The brush will pick up dirt, moisture or powder residue and deposit it into the chamber or receiver. Never dip a brush in solvent. The solvent at the brush core will collect dirt and drop it into the receiver and chamber. Remember - Rust is neglect. Make sure all exposed metal surfaces are coated with a film of oil. After being subjected to damp weather, thoroughly wipe the bore and metal surfaces. Then apply a new film of oil. If exposed to a soaking rain, snow or salt spray, a more thorough cleaning and oiling may be necessary.

Wipe the bolt clean of any debris with solvent and a patch or small rag. Lightly oil bolt.

A gun brought out of prolonged storage should also be cleaned before shooting. Accumulated moisture and dirt, or solidified grease and oil, can prevent the gun from operating properly. We recommend the use of pull through cleaning kits or cleaning with a rod type kit. Overtime, depending on the amount of use and how it is stored, we do recommend that you take your Henry to a gunsmith to have it inspected at which time it can also be cleaned more thoroughly.

MAINTENANCE BEFORE STORAGE

When storing your firearm, do not encase it in anything that will attract or hold moisture, for example, leather or heavy cloth. Also, do not store firearms with a plug inserted in the barrel because this can be a contributing factor to moisture accumulation.

If your firearm is to be stored for an extended period, the bore, chamber and internal surfaces should be oiled with a high-quality lubricating oil or preservative intended for firearms. The external parts; receiver, bolt and barrel should be coated with an anti-rust oil.

Before using your firearm again, be sure to clean it. Every time you clean your firearm, check it for signs of wear. If wear is noted, do not use the firearm, have it checked by a qualified gunsmith.

Make sure your firearm is in good mechanical condition before firing it. Periodically have your firearm checked for signs of erosion, cracking, or wear by the factory or a factory certified gunsmith.

STORAGE SAFETY AND PRECAUTIONS

NEVER LOCK A LOADED FIREARM AND NEVER LOAD A LOCKED FIREARM!

ALWAYS CHECK TO MAKE SURE YOUR FIREARM IS NOT LOADED BEFORE CLEANING, STORING, TRANSPORTING IT, LAYING IT DOWN, OR HANDING IT TO ANOTHER PERSON so that it cannot be fired when it is unsafe to do so.

ALWAYS KEEP AND STORE YOUR FIREARM AND AMMUNITION IN SEPARATE, LOCKED LOCATIONS, OUT OF REACH AND SIGHT OF CHILDREN AND UNTRAINED PERSONS. Safe and secure storage of your firearm and ammunition are your responsibility.

NEVER LEAVE THE KEY TO THE LOCK FOR YOUR FIREARM WITH THE STORED FIREARM!

NEVER ASSUME THAT A "HIDING" PLACE IS A SECURE STORAGE METHOD. Others may be aware of your storage location or come upon it by chance. It is your personal responsibility to use common sense when storing your firearm and ammunition and to always make sure they are not accessible to children or other unauthorized persons.

NOTE: Do not store your firearm in an air-tight container, and do not seal or attempt to seal the barrel to exclude dust, as the internal steel surface is more likely to rust or corrode by doing this.

BEWARE OF BARREL OBSTRUCTIONS. Be sure the barrel is clear of obstructions before shooting. Mud, water, snow or other objects may inadvertently lodge in the barrel bore. A small obstruction can cause a dangerous increase in pressure and may damage your firearm and cause injury to yourself and others.

BEFORE CHECKING FOR A BARREL OBSTRUCTION, BE CERTAIN YOUR FIREARM IS COMPLETELY UNLOADED. After assuring yourself that the firearm is completely unloaded, open the action and look through the barrel to be sure it is clear of obstructions. If an obstruction is seen, no matter how small it may be, clean the bore with a cleaning cord or a patch as described in the **CLEANING** section of this owner's manual.

BE SURE ALL ACCESSORIES, SUCH AS SLINGS, SCOPES AND OTHER ACCESSORIES ARE COMPATIBLE WITH YOUR PARTICULAR FIREARM AND THAT THE ACCESSORIES DO NOT INTERFERE WITH ITS SAFE OPERATION.

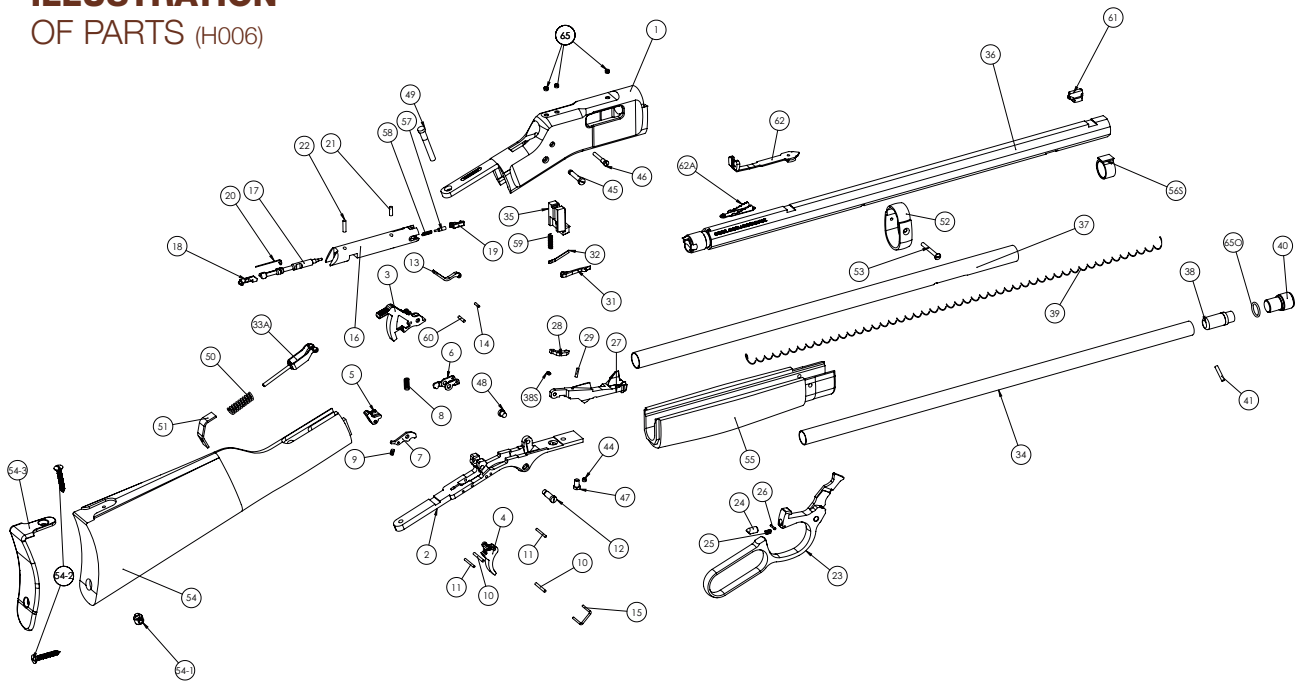
It is your responsibility to understand and follow all of the instructions in the safety manual that accompanied your firearm, as well as those which may be supplied with your ammunition and any accessory.

NEVER DISASSEMBLE YOUR FIREARM BEYOND THE FIELD STRIPPING PROCEDURE OUTLINED IN THIS MANUAL. Improper disassembly or reassembly of your firearm may be dangerous and can lead to serious injury or death.

NEVER MANIPULATE, ADJUST OR CHANGE ANY OF THE INTERNAL COMPONENTS OF YOUR FIREARM UNLESS SPECIFICALLY INSTRUCTED TO DO SO IN THIS MANUAL. Improper manipulation of any other internal component may affect the safety and reliability of your firearm and may cause serious injury or death.

NEVER ALLOW ANY ALTERATION OR REPLACEMENT OF PARTS IN YOUR FIREARM UNLESS PERFORMED BY A QUALIFIED GUNSMITH USING AUTHORIZED PARTS. If you do otherwise, improper functioning of your firearm may occur and serious injury or death and damage to property may result.

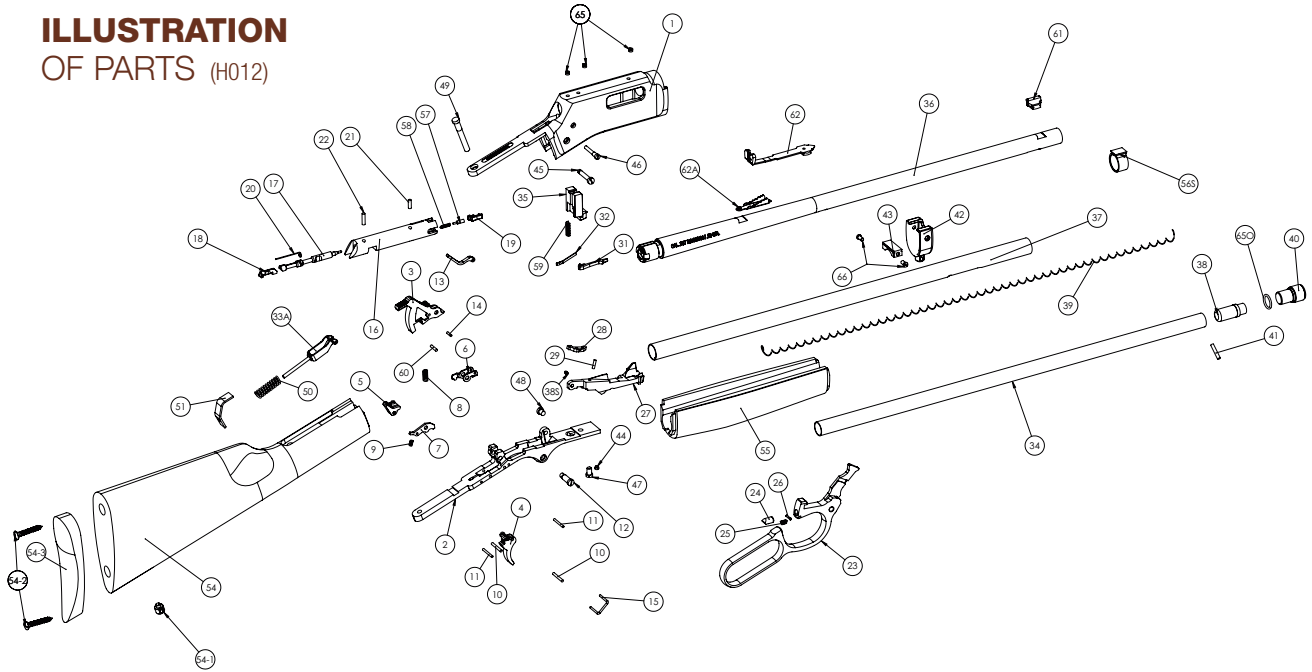
ILLUSTRATION OF PARTS (H006)



LIST OF PARTS

| | | | | | |
|-----------|-------------------------------|------------|------------------------|-------------|---------------------------------|
| 01 | Receiver | 23 | Lever | 47 | Trig. Guard Plate Screw |
| 02 | Trigger Guard Plate | 24 | Lever Plunger | 48 | Trig. Guard Plate Support Screw |
| 03 | Hammer | 25 | Lever Plunger Spring | 49 | Tang Screw |
| 04 | Trigger | 26 | Lever Plunger Pin | 50 | Main Spring |
| 05 | Sear | 27 | Carrier | 51 | Main Spring Seat |
| 06 | Rocker | 28 | Carrier Dog | 52 | Barrel Band |
| 07 | Trigger Lock | 29 | Carrier Dog Pin | 53 | Barrel Band Screw |
| 08 | Sear Rocker Spring | 31 | Ejector | 54 | Buttstock |
| 09 | Trigger Lock Spring | 32 | Ejector Spring | 54-1 | Swivel Screw |
| 10 | Sear Trigger Pin | 33A | Mainspring Yoke Ass'y | 54-2 | Buttplate Screw |
| 11 | Lever Detent Trigger Lock Pin | 34 | Inner Magazine Tube | 54-3 | Buttplate |
| 12 | Lever Screw | 35 | Locking Bolt | 55 | Forearm |
| 13 | Transfer Bar | 36 | Barrel | 56S | Outer Mag. Tube Support |
| 14 | Transfer Bar Pin | 37 | Outer Magazine Tube | 57 | Extractor Plunger |
| 15 | Trigger Rocker Link | 38 | Follower | 58 | Extractor Spring |
| 16 | Bolt | 38S | Carrier Dog Spring | 59 | Locking Bolt Spring |
| 17 | Front Firing Pin | 39 | Inner Mag. Tube Spring | 60 | Main Spring Yoke Pin |
| 18 | Rear Firing Pin | 40 | Knob Magazine Tube | 61 | Front Sight |
| 19 | Extractor | 41 | Magazine Tube Knob Pin | 62 | Rear Sight |
| 20 | Firing Pin Spring | 44 | Outer Mag. Ret. Screw | 62A | Rear Sight Elevator |
| 21 | Firing Pin Retention Pin FT | 45 | Hammer Screw | 65 | Dummy Screw |
| 22 | Firing Pin Retention Pin RR | 46 | Carrier Screw | 650 | O-ring |

ILLUSTRATION OF PARTS (H012)



LIST OF PARTS

| | | | | | |
|-----------|-------------------------------|------------|------------------------|-------------|---------------------------------|
| 01 | Receiver | 24 | Lever Plunger | 47 | Trig. Guard Plate Screw |
| 02 | Trigger Guard Plate | 25 | Lever Plunger Spring | 48 | Trig. Guard Plate Support Screw |
| 03 | Hammer | 26 | Lever Plunger Pin | 49 | Tang Screw |
| 04 | Trigger | 27 | Carrier | 50 | Main Spring |
| 05 | Sear | 28 | Carrier Dog | 51 | Main Spring Seat |
| 06 | Rocker | 29 | Carrier Dog Pin | 54 | Buttstock |
| 07 | Trigger Lock | 31 | Ejector | 54-1 | Swivel Screw |
| 08 | Sear Rocker Spring | 32 | Ejector Spring | 54-2 | Buttplate Screw |
| 09 | Trigger Lock Spring | 33A | Mainspring Yoke Ass'y | 54-3 | Buttplate |
| 10 | Sear Trigger Spring | 34 | Inner Magazine Tube | 55 | Forearm |
| 11 | Lever Detent Trigger Lock Pin | 35 | Locking Bolt | 56S | Outer Mag. Tube Support |
| 12 | Lever Screw | 36 | Barrel | 57 | Extractor Plunger |
| 13 | Transfer Bar | 37 | Outer Magazine Tube | 58 | Extractor Spring |
| 14 | Transfer Bar Pin | 38 | Follower | 59 | Locking Bolt Spring |
| 15 | Trigger Rocker Link | 38S | Carrier Dog Spring | 60 | Main Spring Yoke Pin |
| 16 | Bolt | 39 | Inner Mag. Tube Spring | 61 | Front Sight |
| 17 | Front Firing Pin | 40 | Knob Magazine Tube | 62 | Rear Sight |
| 18 | Rear Firing Pin | 41 | Mag. Tube Knob Pin | 62A | Rear Sight Elevator |
| 19 | Extractor | 42 | Forearm Cap | 65 | Dummy Screw |
| 20 | Firing Pin Spring | 43 | Forearm Cap Support | 650 | O-Ring |
| 21 | Firing Pin Retention Pin FT | 44 | Outer Mag. Ret. Screw | 66 | Forearm Cap Screw |
| 22 | Firing Pin Retention Pin RR | 45 | Hammer Screw | | |
| 23 | Lever | 46 | Carrier Screw | | |

PARTS

An illustration and list of part names are included in this manual. Please note that not all parts are available for sale. Those parts which are available should be installed by a licensed gunsmith. When ordering parts, please give part name and part number.

Important: If you make unauthorized adjustments or use unauthorized parts, Henry Repeating Arms Company will not assume responsibility for the proper functioning of the firearm.

THIS GUN IS MANUFACTURED TO PERFORM PROPERLY WITH THE ORIGINAL PARTS AS DESIGNED. IT IS YOUR DUTY TO MAKE SURE ANY PARTS YOU BUY ARE INSTALLED CORRECTLY AND THAT NEITHER REPLACEMENTS NOR ORIGINALS ARE ALTERED OR CHANGED. THIS IS WHY WE SAY TAKE IT TO A LICENSED GUNSMITH STATION. YOUR GUN IS A COMPLEX TOOL WITH MANY PARTS THAT MUST RELATE CORRECTLY TO OTHER PARTS. PUTTING A GUN TOGETHER WRONG OR WITH MODIFIED PARTS CAN RESULT IN A DAMAGED GUN, DANGER, AND INJURY OR DEATH TO YOU AND OTHERS THROUGH MALFUNCTION. ALWAYS LET A QUALIFIED GUNSMITH WORK ON YOUR GUN AND CHECK ANY WORK YOU THINK WAS NOT PERFORMED BY A GUNSMITH.

SERVICING AND REPAIR

If you believe that your Henry firearm requires repair or adjustment, we suggest that you first contact our Customer Service by visiting the "Contact Us" page on our website, or by phone at 201.858.4400. It may be a problem that we can resolve by phone or by sending a replacement part. For international customers please visit the "Contact Us" page on our website for instructions.

In the unlikely event that your firearm requires adjustments or repair, please make certain that it is unloaded and send it to us at the address appropriate to your model:

H006 MODELS

HRAC

Attn: Repair Dept.

59 East 1st Street
Bayonne, NJ 07002

H012 MODELS

HRAC

Attn: Repair Dept.

107 W. Coleman Street
Rice Lake, WI 54868

Enclose an explanation of the problem in as much detail as possible. Make certain to include your complete name, address, phone number and serial number. Make sure your firearm is packaged to prevent it from being damaged. The package should be insured to protect against LOSS OR THEFT.

DO NOT INCLUDE "HENRY REPEATING ARMS" IN THE ADDRESS ON THE PACKAGE, IN ORDER TO PREVENT AN INQUISITIVE THIEF FROM BEING ATTRACTED TO IT BY SUCH INFORMATION. YOU CAN USE THE ORIGINAL BOX FOR RETURN, HOWEVER, YOU SHOULD MAKE SURE IT IS WRAPPED IN A BROWN OR OTHER COLORED PAPER AS TO NOT INDICATE THAT THE BOX CONTAINS A FIREARM. THIS HELPS TO MAINTAIN THE CONFIDENTIALITY OF YOUR RIFLE TO ENSURE IT GETS BACK TO US SAFELY.

NEW PRODUCTS FROM HENRY

Henry Repeating Arms Company will endeavor to introduce and manufacture other fine firearms, all made in America, of high quality and at affordable prices.

Telephone: **201-858-4400** • Fax: **201-858-4435** • Website: **www.henryusa.com**

SOCIALIZE WITH HENRY AND HENRY OWNERS

Keep up to date with new inventions and products from Henry as well as meet other Henry owners around the country by joining the conversation and liking our social media accounts:

 www.facebook.com/henryrepeating

 @Henry_Rifles

 @HenryRifles

 www.youtube.com/c/HenryriflesUSA

Be the first to know about new products and events by subscribing to our e-mail list: www.henryusa.com/maillinglist

HENRY CUSTOMER PHOTOS

You may already be famous, but if not, we invite you to send a photo with your Henry for a possible website appearance to: info@henryusa.com

HENRY ACCESSORIES

Made in America, just like our rifles! Find apparel, slings, scope mounts, gun cases, display cases and more at www.henrypride.com

History and Thank You



Benjamin Tyler Henry.
His invention: The Henry Rifle.

Thank you for purchasing your new Henry Firearm. We are proud to have crafted this firearm for you in the great tradition of the Henry Repeating Rifle which dates back to 1860 when the first effective, lever-action repeating rifle was developed by Benjamin Tyler Henry. The lever action is America's unique contribution to international firearms design; We go to great lengths to provide the highest quality of design and craftsmanship for each and every one of our American-Made firearms. You are now a part of the Henry family, and we are thankful to have your support. Your new Shotgun should provide you and your family with many years of safe enjoyment and pride of ownership.

It is imperative that these cautions and operating instructions be thoroughly studied and understood before using your new firearm, in order to ensure proper and safe gun handling. Failure to follow these cautions, warnings and operating instructions could result in damage to your gun or to other property or could result in injury or death to yourself or to others.