



HENRY®

Made In America, Or Not Made At All

HenryUSA™

Henry .30/30 Rifle

Instruction Manual For All H009 Series Rifles



Important:
Study this instruction manual
carefully before you handle this firearm.

Made in America



IS A REGISTERED TRADEMARK
OF THE HENRY REPEATING ARMS COMPANY

TEL. **201-858-4400** | FAX. **201-858-4435**

WEBSITE. **www.henryusa.com**

WARNING: BEFORE USING FIREARM, READ AND FOLLOW THESE INSTRUCTIONS.

If there is anything you do not understand,
get help from someone qualified to teach the safe handling of firearms.

THE HENRY GUARANTEE

Thank you very much for spending your hard earned money to purchase a Henry. I certainly appreciate it and welcome you to the Henry family. As an owner of a Henry, you are backed by our lifetime warranty and my personal guarantee for 100% satisfaction. I will do what it takes to make certain you are happy with your purchase.

Sincerely,

Anthony Imperato

Henry Repeating Arms

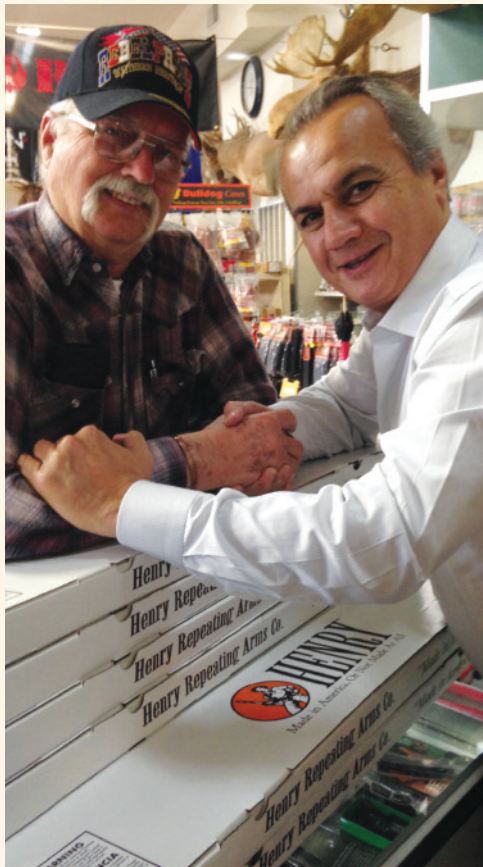
Telephone: 201.858.4400

Web: www.henryusa.com

We are confident that you'll enjoy and be proud to own any of our Henry firearms, well known for their reliability, accuracy, handsome looks and smooth action.

Our goal has and always will be to manufacture a line of classic, well-crafted firearms that every enthusiast would find readily affordable.

We take great pride in manufacturing our shotguns in the United States, hence our corporate motto "Made in America, or Not Made at All".



HENRY[®]



**Made In America,
Or Not Made At All**

Use the space below to record information about your new firearm.

Serial Number _____

Caliber _____

Purchase Price _____

Purchased From _____

Date of Purchase _____

Henry Repeating Arms Company
59 East 1st Street
Bayonne, NJ 07002

If you have any questions or comments regarding your new Henry firearm, please feel free to write or call us.

SIMPLE LIMITED LIFETIME WARRANTY ON ALL HENRY FIREARMS

It is our promise to you that as long as you own your Henry firearm, it will be free from defects in material and workmanship from the manufacturer. If you have a problem with your Henry firearm, we will fix it at no charge to you. Henry Repeating Arms shall repair, send replacement parts or replace the firearm with a valid warranty claim. If a complete replacement is necessary, the original firearm will not be returned. Henry RAC will provide repairs or replacement at no charge, but will not offer cash, credit, or refund.

WE RESERVE THE RIGHT TO REFUSE SERVICE ON FIREARMS THAT HAVE BEEN ALTERED, ADDED TO, OR SUBSTANTIALLY CHANGED. Removal of metal from the barrel, or modifications of the firing mechanism and/or operating parts, may lead to a refusal of service on such firearms. There will be a charge for parts and labor to return the firearm to original specifications.

DO NOT, UNDER ANY CIRCUMSTANCES, ALTER THE TRIGGER, "SAFETY" OR OTHER PARTS OF FIRING MECHANISM OF THIS OR ANY OTHER FIREARM. FAILURE TO OBEY THIS WARNING MAY RESULT IN INJURY OR DEATH.

NOTICE: Henry RAC shall not be responsible for injury, death, or damage to property resulting from either intentional or accidental discharge of this firearm, or from its function when used for purposes or subjected to treatment for which it is not designed.

Whether or not you are experienced in the safe handling of firearms, we urge you to read this entire instruction manual carefully. You must follow the safety instructions for your safety and the safety of others. Should you have any questions concerning the instructions in this manual, please call us at 201-858-4400.

WARNING: If you have little or no experience in the safe handling and operation of a firearm, we strongly urge you to take a firearms safety course from an NRA Certified Instructor or someone with equivalent qualifications before using this or any other firearm. You can contact the NRA Firearms Education and Safety Division at 703-267-1470 for the name of an instructor in your area, or contact your firearms dealer, law enforcement agency or local sportsman's club for training

Table of Contents

Cautions	
Handling Cautions	4
Range Cautions	4
Loading/Unloading Cautions	5
Shooting Cautions	5
Malfunction Cautions	6
Cleaning & Storage Cautions	6
Storage	7
Ammunition	7
Operating Instructions	
How to use Safety	8
How to Load Your Henry	8
How To Operate Your Henry	8
How to Unload Your Henry	9
Sights	9
How To Clean Your Henry	9
Maintenance	10
Gun Parts	12
Service and Repair	12

CAUTIONS:

GENERAL HANDLING CAUTIONS

ALWAYS HANDLE YOUR FIREARM AS IF IT WERE LOADED so that you never fire it accidentally when you think it is unloaded.

NEVER POINT YOUR FIREARM AT ANYTHING YOU DO NOT INTEND TO SHOOT so that if it fires accidentally, injury, death, or damage to property will be avoided.

NEVER TAKE ANYONE'S WORD THAT A GUN IS UNLOADED. Check for yourself with fingers off the trigger and gun pointed in a safe direction so that you never fire the gun accidentally when you think it is unloaded.

ALWAYS CHECK TO MAKE SURE YOUR FIREARM IS NOT LOADED WHEN HANDING IT TO ANOTHER PERSON.

ALWAYS KEEP AND CARRY YOUR FIREARM EMPTY WITH THE HAMMER IN THE "SAFE" POSITION except when you intend to shoot, so that your firearm cannot be fired when you do not intend to fire it.

ALWAYS BE AWARE OF POSSIBLE RISK FROM DROPPING YOUR FIREARM. Some parts of the mechanism could be damaged. You may not see the damage, but it is severe. The firearm may discharge and cause injury, death, or damage to property. If your firearm has been dropped, have it examined by a competent gunsmith before using it again.

NEVER LEAVE A FIREARM COCKED AND READY TO FIRE, as this condition is extremely dangerous and the firearm could easily be accidentally discharged, causing injury, death, or damage to property.

NEVER LEAVE A LOADED FIREARM UNATTENDED. Someone, especially a child, may fire it and cause injury, death, or damage to property.

ALWAYS INSTRUCT CHILDREN TO RESPECT FIREARMS. If you teach your children to shoot or get them trained by a qualified instructor, be certain they know how to use the firearm properly and always supervise them closely. Always stress safety so that your children will not fire a rifle when or where it is unsafe to do so.

RANGE CAUTIONS

Always be sure your backstop is adequate to stop and contain bullets before beginning target practice so that you do not hit anything outside the range shooting area. Think! What will you HIT if you Miss the target?

ALWAYS PUT A KNOWLEDGEABLE AND RESPONSIBLE PERSON IN CHARGE TO MAINTAIN SAFETY CONTROL WHEN A GROUP IS FIRING ON A RANGE. Obey his commands so that discipline is maintained to reduce the possibility of accidents.

ALWAYS CARRY YOUR FIREARM EMPTY WITH THE ACTION OPEN WHILE ON A RANGE until preparing to fire and keep it pointing towards the backstop when loading, firing, and unloading to eliminate the risk of injury, death or damage to property.

LOADING/UNLOADING CAUTIONS

ALWAYS BE SURE BARREL, BORE, CHAMBER, AND ACTION ARE CLEAN AND CLEAR OF OBSTRUCTIONS. Clean a fouled firearm immediately so that it will function correctly and safely.

ALWAYS USE ONLY CLEAN, DRY, HIGH-QUALITY, COMMERCIALY MANUFACTURED AMMUNITION IN GOOD CONDITION AND APPROPRIATE TO THE CALIBER OF YOUR FIREARM. Gun and ammunition manufacturers design their products within exacting engineering safety limits. Handloads and remanufactured ammunition are sometimes outside those limits and could blow up the chamber, bolt and receiver of any firearm and cause injury, death or damage to property.

SHOOTING CAUTIONS

NEVER DRINK ALCOHOLIC BEVERAGES OR TAKE DRUGS BEFORE OR DURING SHOOTING as your vision, coordination, and judgement could be seriously impaired, making your gun handling unsafe.

ALWAYS SEEK A DOCTOR'S ADVICE IF YOU ARE TAKING MEDICATION to be sure you are fit to shoot and handle your firearm safely.

ALWAYS WEAR AND ENCOURAGE OTHERS TO WEAR EAR PROTECTION WHEN SHOOTING, especially on a range. Without ear protection, the noise of even one shot from your rifle and from other guns close to you could leave a "ringing" in the ears for some time after firing and the cumulative long term effect could be permanent hearing loss.

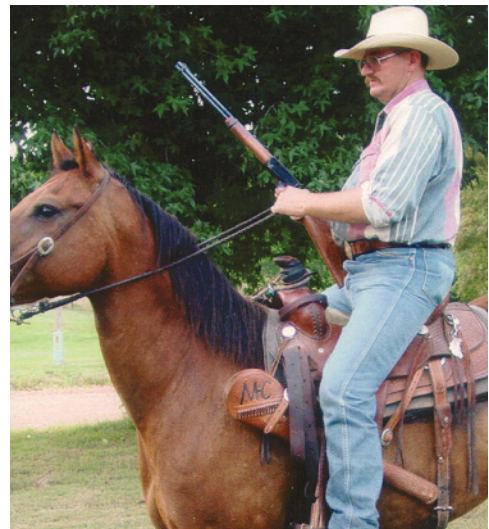
ALWAYS WEAR AND ENCOURAGE OTHERS TO WEAR PROTECTIVE SHOOTING GLASSES. Flying particles could damage eyes and cause blindness. Protective shooting glasses can prevent such an injury.

ALWAYS KEEP THE HAMMER IN THE "SAFE" POSITION UNTIL YOU ARE READY TO FIRE. This will minimize the risk of an accidental discharge.

ALWAYS KEEP CLEAR AND KEEP OTHERS CLEAR OF THE EJECTION PORT. Spent cartridges are ejected with enough force to cause injury. The ejection port must also be unobstructed by your hand to insure safe ejection of spent rounds. Never place fingers in ejection port - they could be burned by hot metal or injured by the bolt moving forward.

NEVER PUT YOUR FINGER INSIDE THE TRIGGER GUARD UNTIL YOU ARE AIMING AT A TARGET AND READY TO SHOOT. This will prevent you from firing the firearm when it is pointing in an unsafe direction.

ALWAYS BE ABSOLUTELY SURE OF YOUR TARGET AND THE AREA BEHIND IT BEFORE YOU SQUEEZE THE TRIGGER. A bullet could travel through or past your target for up to 1 1/2 miles. If in doubt, don't shoot! Think! What will you HIT if you MISS the target?



NEVER SHOOT AT A HARD SURFACE SUCH AS ROCK OR A LIQUID SURFACE SUCH AS WATER. A bullet may ricochet and travel in any direction to strike you or an object you cannot see, causing injury, death or damage to property.

NEVER DISCHARGE A FIREARM NEAR FLAMMABLE MATERIAL. Flame and sparks erupt from the firearm when discharged. They could start a fire or cause flammable liquids and gasses to explode.

NEVER FIRE YOUR FIREARM NEAR AN ANIMAL unless it is trained to accept the noise - an animal's startled reaction could injure it or cause an accident.

NEVER INDULGE IN "HORSEPLAY" WHILE HANDLING YOUR FIREARM because doing so could cause an accidental discharge.

NEVER WALK, CLIMB, OR FOLLOW A COMPANION WITH YOUR FIREARM COCKED AND READY TO FIRE to eliminate risk of accidental discharge. When hunting, hold your firearm so that you can always control the direction of the muzzle.

MALFUNCTION CAUTIONS

FAILURE TO FIRE: IF THE FIREARM FAILS TO FIRE DO NOT PUT IT DOWN OR OPEN THE ACTION. ALWAYS HOLD THE FIREARM, KEEPING IT POINTED IN A SAFE DIRECTION AND WAIT 30 SECONDS. IF A HANGFIRE (SLOW IGNITION) HAS OCCURRED, THE ROUND WILL FIRE WITHIN 30 SECONDS. If the round does not fire, remove the ammunition, eject the round and examine the cartridge. If the firing pin indent on the rim is light or non-existent, have the firearm examined by a competent gunsmith before firing again. If the firing pin indent on the rim appears normal (in comparison with similar previously fired rounds) assume you have faulty ammunition. Segregate the misfired round from other live firearm ammunition and empty cases, reload, and carry on firing.

Note: Dispose of misfired rounds in accordance with ammunition manufacturer's instructions.

NEVER USE YOUR FIREARM IF IT FAILS TO FUNCTION PROPERLY, AND NEVER FORCE A JAMMED ACTION. Forcing the action could make the round explode, causing serious injury, possible death, or severe damage to your firearm or other property.

CLEANING AND STORAGE CAUTIONS

ALWAYS CHECK TO MAKE SURE YOUR FIREARM IS NOT LOADED BEFORE CLEANING, STORING, TRAVELING, LAYING IT DOWN, OR HANDING IT TO ANOTHER PERSON so that it cannot be fired when it is unsafe to do so.

ALWAYS KEEP AND STORE YOUR FIREARM AND AMMUNITION IN SEPARATE, LOCKED LOCATIONS, OUT OF REACH AND SIGHT OF CHILDREN AND UNTRAINED PEOPLE to minimize the risk of rifle and ammunition being easily available for loading and firing by unauthorized persons.



STORAGE

CAUTION: ALWAYS UNLOAD YOUR FIREARM FOR STORAGE AND STORE AMMUNITION SEPARATELY. Keep and store your firearm and ammunition securely locked and in separate locations out of reach and sight of children. Children are naturally curious and do not always understand the real danger of guns.

NOTE: Do not store your firearm in an air-tight container, and do not seal or attempt to seal the barrel to exclude dust, as the internal steel surface is more likely to rust or corrode by doing this.

WARNING: When you squeeze the trigger, you must expect the gun to fire and you must take full responsibility for firing it. Your care can avoid accidental discharge and you will thereby avoid accidental injury, death and property damage.

WARNING: DISCHARGING FIREARMS IN POORLY VENTILATED AREAS, CLEANING FIREARMS OR HANDLING AMMUNITION MAY RESULT IN EXPOSURE TO LEAD, A SUBSTANCE KNOWN TO CAUSE BIRTH DEFECTS, REPRODUCTIVE HARM AND OTHER SERIOUS PHYSICAL INJURY. HAVE ADEQUATE VENTILATION AT ALL TIMES. WASH HANDS THOROUGHLY AFTER EXPOSURE.

AMMUNITION SELECTION

Henry RAC Firearms are designed to function with a variety of brands and types of factory-manufactured ammunition in the appropriate caliber but not all ammunition produces the same result. Henry RAC recommends that after you read and understand this manual, you go to the range and fire different ammunition which is appropriate to the caliber of your firearm. Once you find the ammunition which functions best, keep using it. Especially when cutting-edge reliability and accuracy are vital to you. When sighting your rifle, shoot a group to determine point of impact on the target. Then make



incremental adjustments to center the point of impact on the target bullseye.

AMMUNITION



H009 30-30

If you purchased the model H009 it is chambered for the 30-30 cartridge.

H009B

If you purchased the model H009B, it is chambered for the 30-30 cartridge.

If you are unsure of the caliber rifle you have, we suggest that you read the rollmark on the barrel to identify the caliber.

DO NOT USE ALUMINUM CASED ROUNDS

OPERATING INSTRUCTIONS FOR YOUR HENRY .30/30 RIFLE



SAFETY

This firearm is designed with an ultra-safe patented Transfer Bar Safety Mechanism. This safety system prevents the gun from being fired under all circumstances, except when the hammer is fully cocked and the trigger is pulled. If the hammer is fully cocked and the trigger is pulled, the gun would fire as normal. However, if the hammer is fully cocked and is accidentally dislodged by some other means other than the trigger being pulled, the gun will not fire. If the hammer is in the process of being cocked and is accidentally released and dropped into the fired down position, before it is fully cocked, the gun will not fire. This rifle can be safely carried fully loaded with the hammer in the fired down resting position. Please note that this rifle does not have a half cock safety position nor a crossbold safety. If you do not have a full understanding of how the safety system works, please call us immediately at 201-858-4400 and ask for technical assistance.

PRIOR TO **LOADING YOUR HENRY .30/30 RIFLE**

Prior to loading your rifle, make certain that it is not already loaded. Point the muzzle in a safe direction, swing the lever down, and pull it back. If a cartridge ejects, proceed with directions on how to unload the magazine tube and empty the chamber. We recommend that you always load a completely unloaded firearm, and clear the firearm of any cartridges prior to loading. Assuming that you are now operating an unloaded firearm, make certain that the barrel, receiver and chamber are free from any obstruction.

HOW TO LOAD

This rifle is a tubular feed design, using a brass inner magazine tube. Cartridges are loaded into the cutout in the blued outer magazine tube located underneath the barrel. **Important - when loading the action must be closed.** Rotate the inner magazine tube to disengage. Pull the inner magazine tube out until the follower (the black part at the end of the inner magazine tube) clears the loading port in the outer magazine tube. You can either remove the brass inner magazine tube completely or keep it positioned in the outer magazine tube just past the loading port. With the muzzle pointed upward, insert the rimmed end of the cartridges into the loading port in the outer magazine tube and allow them to slide down towards the action. **Do not exceed the capacity of the magazine, which is 5 rounds.** Next, push the inner magazine tube back down into position, and lock it into place. The rifle is now ready for operation.

HOW TO **OPERATE YOUR HENRY .30/30 RIFLE**

The rifle chamber can now be loaded by swinging the lever down completely, and pulling it back into a closed

position. The hammer has been moved into the cocked position and the rifle is now ready to fire. If you are not yet ready to fire, then place your thumb on the hammer, and disengage the hammer by pulling the trigger slightly rearward. Immediately release the trigger while still holding the hammer, and bring the hammer into the fired down position. You now have the gun in loaded but safe to carry position. If you want to fire the gun, bring the hammer back to the cocked position, aim in a safe direction at your target, and pull the trigger.

HOW TO **UNLOAD THE MAGAZINE AND CHAMBER OF YOUR HENRY .30/30 RIFLE**

To unload the magazine and chamber, the hammer should be resting in the fired down position. With the rifle pointing upward, withdraw the inner magazine tube. Tip the gun downward, allowing cartridges to slide out into a container. Replace the inner magazine tube. Open the action again, by cycling the lever, to make certain that there are no cartridges in the chamber. Cycle the action multiple times to insure that no live rounds remain in the chamber.

SIGHT ADJUSTMENTS - Your rifle is equipped with a fully adjustable rear sight. The rear sight is adjustable for elevation (shooting high and low) and for windage (shooting left and right). In order to shoot higher, you need to raise the rear sight. In order to shoot lower, you need to lower the rear sight. In order to raise or lower the rear sight, you need to grab the “ears” of the rear sight, and lift it up, in order to move the rear sight elevator, which sits below the ears. Your rifle can be adjusted to shoot higher by moving the rear sight elevator backward by one or more notches. In order to shoot lower, the rear sight elevator should be moved forward. In addition, the rear sight contains a white diamond insert for fine-tuning height adjustment. This part is held in place by a screw. This reversible piece gives you a choice of U shape or V shape and can be adjusted for height. If you want to shoot higher, raise the insert. If you want to shoot lower, then lower the insert. There is a secondary adjustment in the white diamond insert of the rear sight. Loosen the screw to the right of the white diamond, raise or lower as needed to correct elevation, then re-tighten the screw. To adjust your rifle for windage (left/right), we suggest that you move the rear sight to the left or right as desired. The rear sight sits in a dovetail slot cutout in the barrel. Current models will have a screw on the front of the rear sight assembly. This screw must first be loosened, prior to attempting adjustment. To adjust your rifle for windage use a plastic mallet, or a hammer and a brass wedge to tap it in the direction you want your hits to land. For example: if you are shooting to the left, you need to tap the sight over to the right to correct the point of impact. Conversely, if you are shooting to the right then you will need to tap it in the direction you want your shots to print.

WARNING: REMOVAL AND FAILURE TO RE-INSTALL THE LOCKING BOLT (PART 35) IS EXTREMELY DANGEROUS.

HOW TO **CLEAN YOUR HENRY .30/30 RIFLE**

You do not have to disassemble this rifle in order to clean it sufficiently and to keep it operating properly.

In order to clean it, we suggest that you first open the action by swinging the lever down. Use a brand name rifle cleaning kit and run the cleaning rod down the bore from the muzzle end toward the breech. Wipe the bolt clean of any debris with solvent and a patch or small rag. Spray the bolt with some gun oil.

If you prefer to take your rifle apart to clean it, then we suggest the following: Open the action by swinging the lever down. Remove the lever screw and then remove the lever. Next, remove the bolt from the receiver.

Note: This will loosen the ejector inside the receiver, so be very careful not to misplace it. You can then remove the ejector from the slot on the left side of the receiver. Use a brand name rifle cleaning kit and clean the bore from the breech end. Then clean the bolt and oil it before replacing. To reassemble, simply do the reverse.

MAINTENANCE

Be sure that your gun is unloaded before attempting to clean.

The gun owner is responsible for periodic inspection and proper maintenance by a qualified gunsmith to ensure that this firearm remains in proper adjustment and that worn parts are replaced.

CLEANING WARNING: Remember - Rust is neglect - Make sure all exposed metal surfaces are coated with a film of oil. After being subjected to damp weather, thoroughly wipe the bore and metal surfaces. Then apply a new film of oil. If exposed to a soaking rain, snow or salt spray, a more thorough cleaning and oiling may be necessary, requiring removal of the trigger guard and breech bolt assemblies.

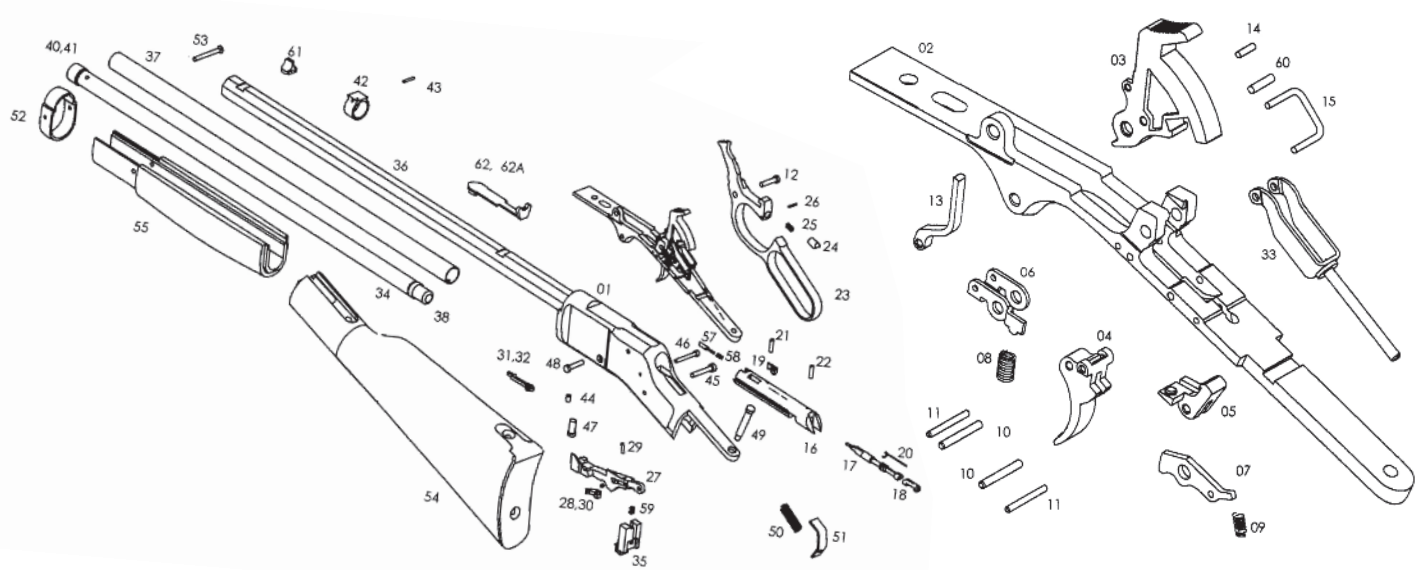
Between seasons, periodically apply a coat of oil to the bore and metal parts and store in a dry place. Do not plug the barrel or store in a case made of fabric or material which will absorb moisture or the lubricant from the gun.

Make certain to thoroughly clean your firearm when finished with firing. We suggest that you purchase a name brand, top quality rifle cleaning kit.

Replacement parts are available through the Henry Repeating Arms Company parts department. In the following pages you will find a parts diagram and price list. Please be sure to include the Model Number and Serial Number of your gun when ordering parts.

TO MAINTAIN OR RESTORE THE RECEIVER TO ITS ORIGINAL FACTORY SHINE, WE SUGGEST YOU USE PEEK METAL POLISH, FLITZ, OR NEVR DULL.

ILLUSTRATION OF PARTS



LIST OF PARTS

01	Receiver	16	Bolt	32	Ejector Spring	48	Trig. Guard Plate Support Screw
02	Trigger Guard Plate	17	Firing Pin-Front	33	Mainspring Yoke Assy	49	Tang Screw
03	Hammer	18	Firing Pin-Rear	34	Inner Mag. Tube	50	Mainspring
04	Trigger	19	Extractor	35	Locking Bolt	51	Mainspring Seat
05	Sear	20	Firing Pin Spring	36	Barrel	52	Barrel Band
06	Rocker	21	Firing Pin Ret. Pin-Front	37	Outer Mag. Tube	53	Barrel Band Screw
07	Trigger Lock	22	Firing Pin Ret. Pin-Rear	38	Mag. Tube Follower	54	Buttstock Assembly
08	Sear/Rocker Spring	23	Lever	39	Mag. Tube Spring	55	Forearm
09	Trigger Lock Spring	24	Lever Plunger	40	Mag. Tube Knob	57	Extractor Plunger
10	Sear/Trigger Spring	25	Lever Plunger Spring	41	Mag. Tube Knob Pin	58	Extractor Spring
11	Lever Detent/Trigger Lock Pin	26	Lever Plunger Pin	42	Mag. Tube Support	59	Locking Bolt Spring
12	Lever Screw	27	Carrier	43	Mag. Tube Support Pin	60	Mainspring Yoke Pin
13	Transfer Bar	28	Carrier Dog	44	Mag. Tube Ret. Screw	61	Front Sight
14	Transfer Bar Pin	29	Carrier Dog Pin	45	Hammer Screw	62	Rear Sight
15	Trigger/Rocker Link	30	Carrier Dog Spring	46	Carrier Screw	62A	Rear Sight Elevator
		31	Ejector	47	Trig. Guard Plate Screw		

⚠ WARNING: This product can expose you to chemicals including lead, which is known to the State of California to cause cancer and birth defects or other reproductive harm. For more information go to www.P65Warnings.ca.gov/product.

GUN PARTS

An illustration and list of part names are included in this manual. Please note that not all parts are available for sale. Those parts which are available should be installed by a licensed gunsmith. When ordering parts, please give part name and part number.

Important: If you make unauthorized adjustments or use unauthorized parts, Henry Repeating Arms Company will not assume responsibility for the proper functioning of the firearm.

THIS GUN IS MANUFACTURED TO PERFORM PROPERLY WITH THE ORIGINAL PARTS AS DESIGNED. IT IS YOUR DUTY TO MAKE SURE ANY PARTS YOU BUY ARE INSTALLED CORRECTLY AND THAT NEITHER REPLACEMENTS NOR ORIGINALS ARE ALTERED OR CHANGED. THIS IS WHY WE SAY TAKE IT TO A LICENSED GUNSMITH STATION. YOUR GUN IS A COMPLEX TOOL WITH MANY PARTS THAT MUST RELATE CORRECTLY TO OTHER PARTS. PUTTING A GUN TOGETHER WRONG OR WITH MODIFIED PARTS CAN RESULT IN A DAMAGED GUN, DANGER, AND INJURY OR DEATH TO YOU AND OTHERS THROUGH MALFUNCTION. ALWAYS LET A QUALIFIED GUNSMITH WORK ON YOUR GUN AND CHECK ANY WORK YOU THINK WAS NOT PERFORMED BY A GUNSMITH.

SERVICING AND REPAIR

If you believe that your Henry firearm requires repair or adjustment, we suggest that you first contact our Customer Service by visiting the "Contact Us" page on our website, or by phone at 201.858.4400. It may be a problem that we can resolve by phone or by sending a replacement part. For international customers please visit the "Contact Us" page on our website for instructions.

In the unlikely event that your firearm requires adjustments or repair, please make certain that it is unloaded and send it to us at the following address:

HRAC

Att: Repair Dept.

59 East 1st Street

Bayonne, New Jersey 07002

Enclose an explanation of the problem in as much detail as possible.

Make certain to include your complete name, address, phone number and serial number. Make sure your firearm is packaged to prevent it from being damaged. The package should be insured to protect against LOSS OR THEFT.

DO NOT INCLUDE "HENRY REPEATING ARMS" IN THE ADDRESS ON THE PACKAGE, IN ORDER TO PREVENT AN INQUISITIVE THIEF FROM BEING ATTRACTED TO IT BY SUCH INFORMATION.

YOU CAN USE THE ORIGINAL BOX FOR RETURN, HOWEVER, YOU SHOULD MAKE SURE IT IS WRAPPED IN A BROWN OR OTHER COLORED PAPER AS TO NOT INDICATE THAT THE BOX CONTAINS A FIREARM. THIS HELPS TO MAINTAIN THE CONFIDENTIALITY OF YOUR RIFLE TO ENSURE IT GETS BACK TO US SAFELY.

NEW PRODUCTS FROM HENRY

Henry Repeating Arms Company will endeavor to introduce and manufacture other fine firearms, all made in America, of high quality and at affordable prices.

Telephone: **201-858-4400** • Fax: **201-858-4435** • Website: **www.henryusa.com**

SOCIALIZE WITH HENRY AND HENRY OWNERS

Keep up to date with new inventions and products from Henry as well as meet other Henry owners around the country by joining the conversation and liking our social media accounts:

 www.facebook.com/henryrepeating

 @Henry_Rifles

 @HenryRifles

 www.youtube.com/c/HenryriflesUSA

Be the first to know about new products and events by subscribing to our e-mail list: www.henryusa.com/maillinglist

HENRY CUSTOMER PHOTOS

You may already be famous, but if not, we invite you to send a photo with your Henry for a possible website appearance to: info@henryusa.com

HENRY ACCESSORIES

Made in America, just like our rifles! Find apparel, slings, scope mounts, gun cases, display cases and more at www.henrypride.com

History and Thank You



Benjamin Tyler Henry.
His invention: The Henry Rifle.

Thank you for purchasing your new Henry Firearm. We are proud to have crafted this firearm for you in the great tradition of the Henry Repeating Rifle which dates back to 1860 when the first effective, lever-action repeating rifle was developed by Benjamin Tyler Henry. The lever action is America's unique contribution to international firearms design; We go to great lengths to provide the highest quality of design and craftsmanship for each and every one of our American-Made firearms. You are now a part of the Henry family, and we are thankful to have your support. Your new Shotgun should provide you and your family with many years of safe enjoyment and pride of ownership.

It is imperative that these cautions and operating instructions be thoroughly studied and understood before using your new firearm, in order to ensure proper and safe gun handling. Failure to follow these cautions, warnings and operating instructions could result in damage to your gun or to other property or could result in injury or death to yourself or to others.