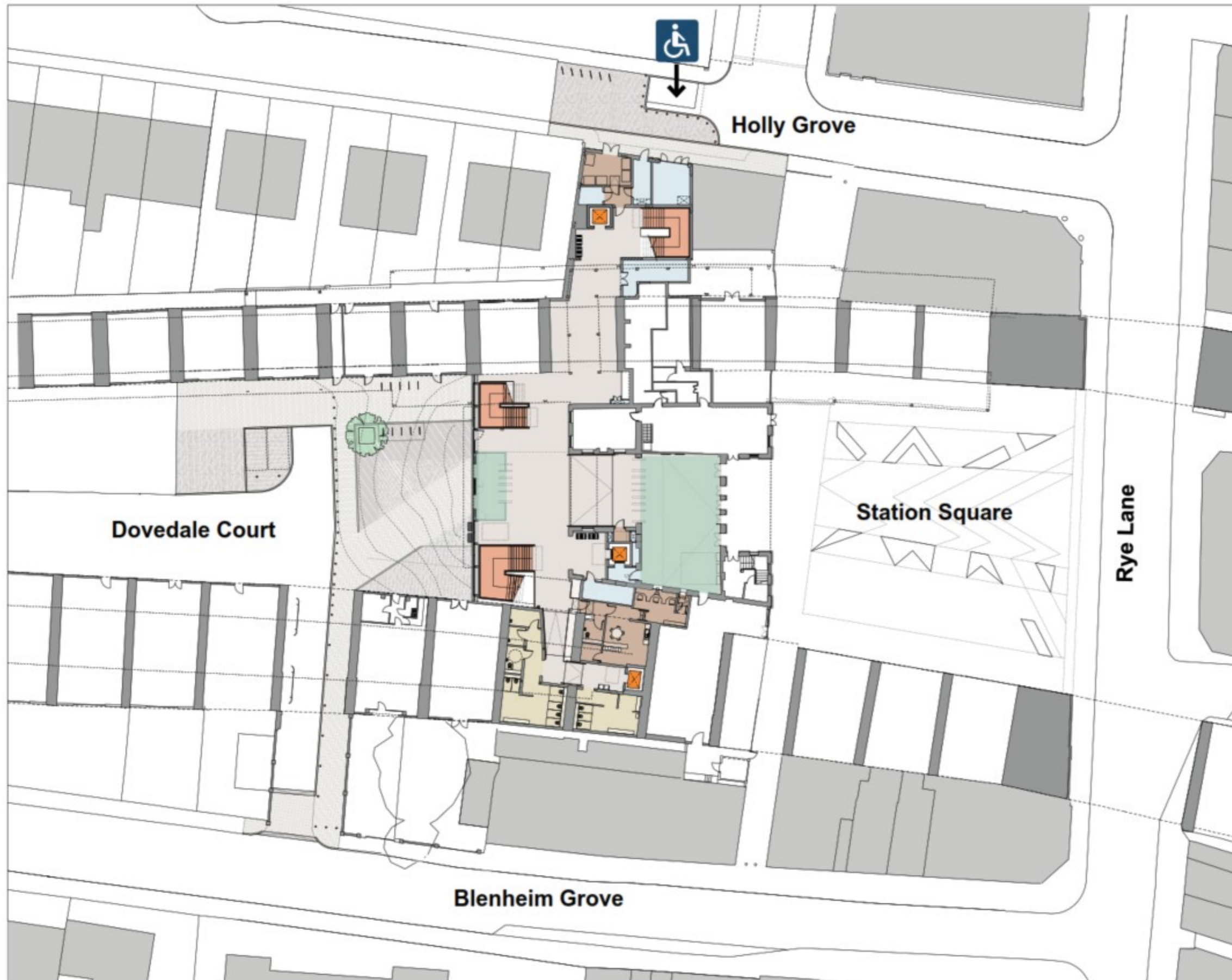


Layouts - Site Plan

Peckham Rye Station Upgrade

**Key attributes:**

Step free access all platforms with compliant lift car sizes

Increased concourse and ticket barrier capacity
West-facing entrance

New operational station built element fronting Holly Grove, no need to narrow platform 4

Segregated stairs to platforms

Segregated interchange flows

Congestion on platform 1+2 partially improved

Removal of platform 3 & 4 accommodation to increase capacity

North



Layouts - Ground Floor Plan



Key attributes:

Step free access all platforms with compliant lift car sizes

Increased concourse and ticket barrier capacity
West-facing entrance

New operational station built element fronting Holly Grove, no need to narrow platform 4

Segregated stairs to platforms

Segregated interchange flows

Congestion on platform 1+2 partially improved

Removal of platform 3 & 4 accommodation to increase capacity

North



Layouts - First Floor Plan



Key attributes:

Step free access all platforms with compliant lift car sizes

Increased concourse and ticket barrier capacity
West-facing entrance

New operational station built element fronting Holly Grove, no need to narrow platform 4

Segregated stairs to platforms

Segregated interchange flows

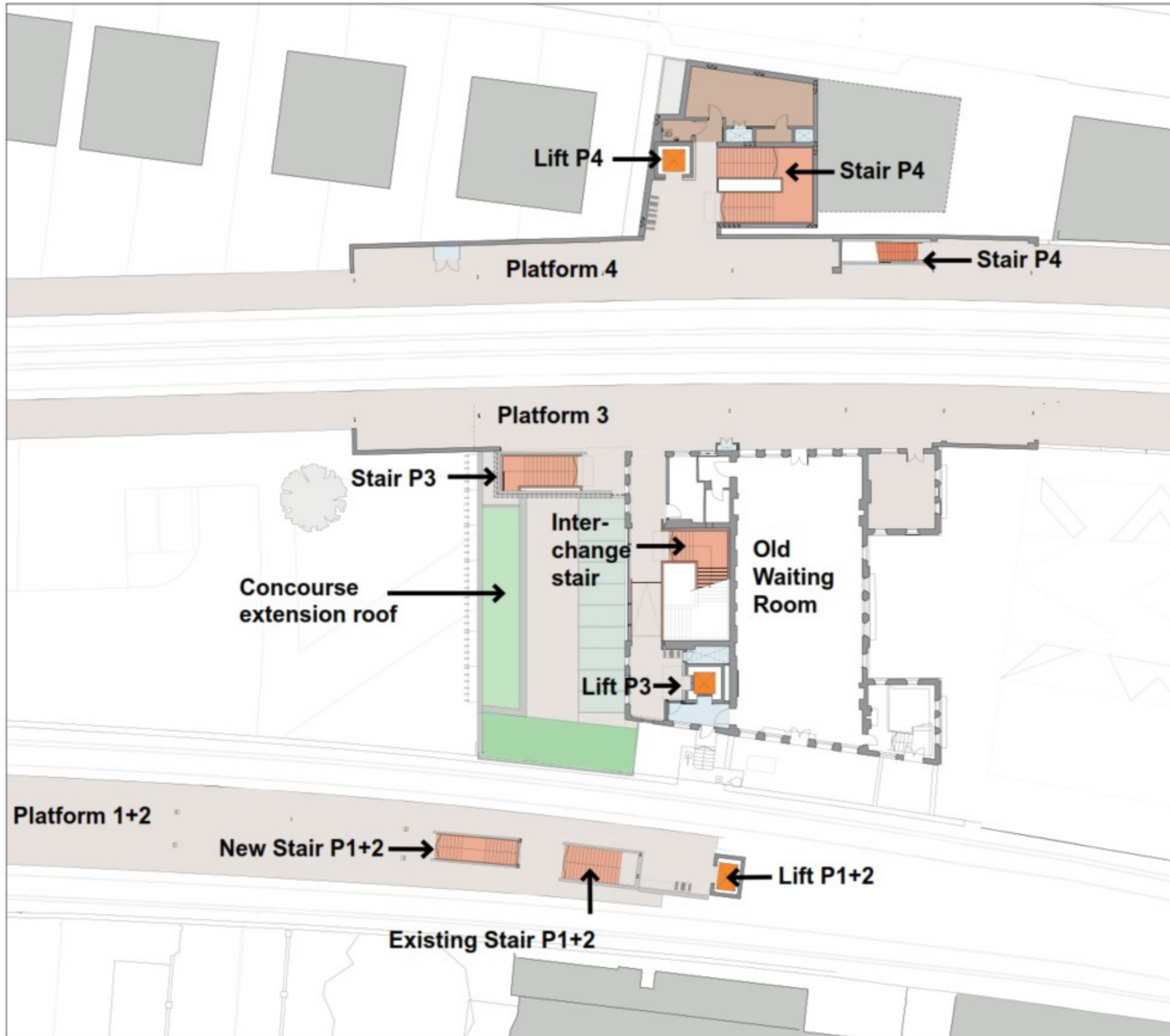
Congestion on platform 1+2 partially improved

Removal of platform 3 & 4 accommodation to increase capacity

North



Layouts - Second Floor Plan - Platform Level



Key attributes:

Step free access all platforms with compliant lift car sizes

Increased concourse and ticket barrier capacity
West-facing entrance

New operational station built element fronting Holly Grove, no need to narrow platform 4

Segregated stairs to platforms

Segregated interchange flows

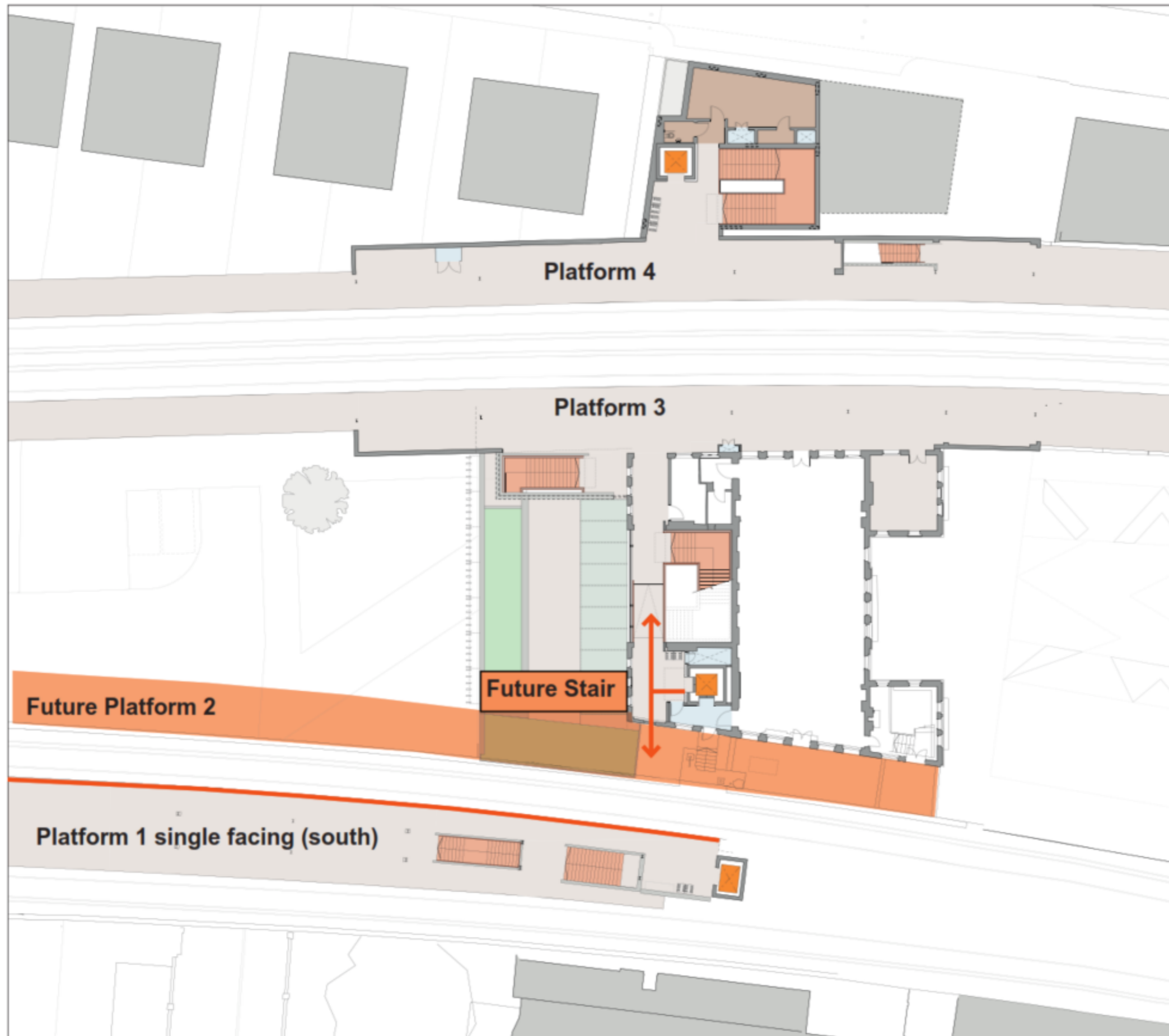
Congestion on platform 1+2 partially improved

Removal of platform 3 & 4 accommodation to increase capacity



Layouts - Second Floor Plan - New Platform 2 Future Proofing

Peckham Rye Station Upgrade



The current design allows for a new platform in the future, though this is not part of our current planning application due to funding constraints.

Were funding to be secured, this would have the following additional benefits:

New platform 2 to reduce congestion on the island platform

Platform 1 would become single-sided and face south

A lift connection would be provided to the new platform.

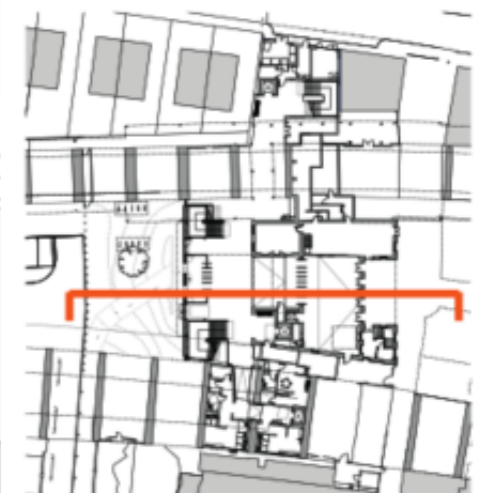
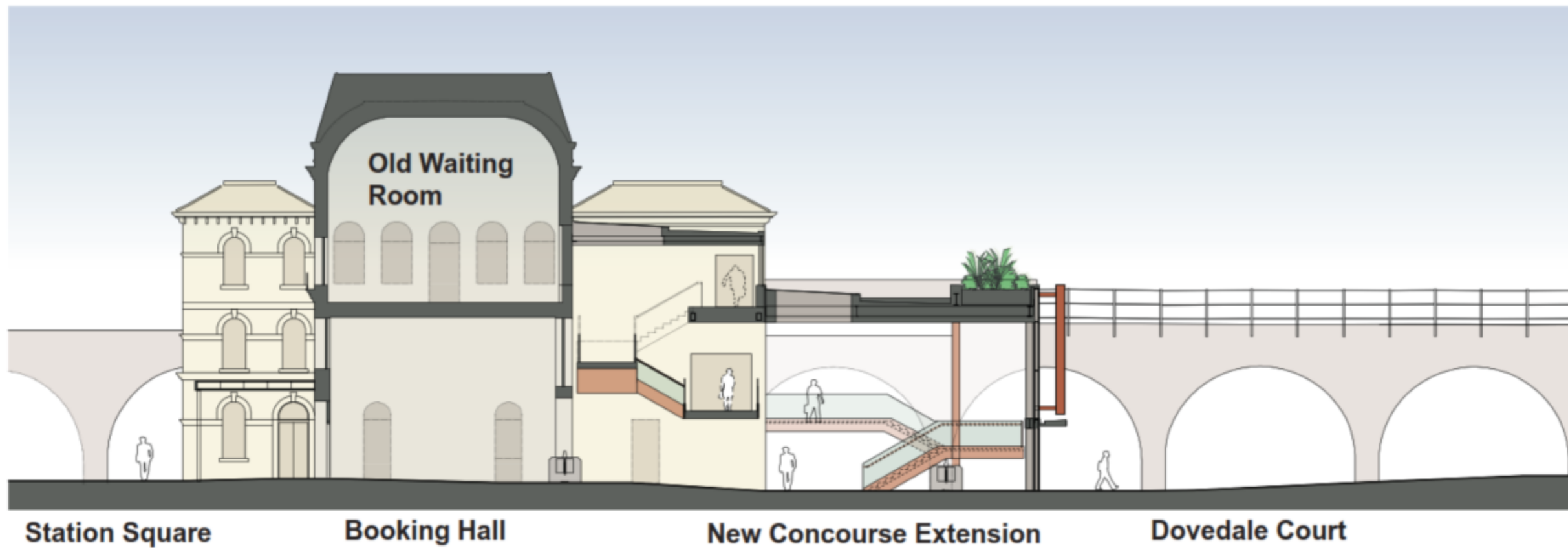
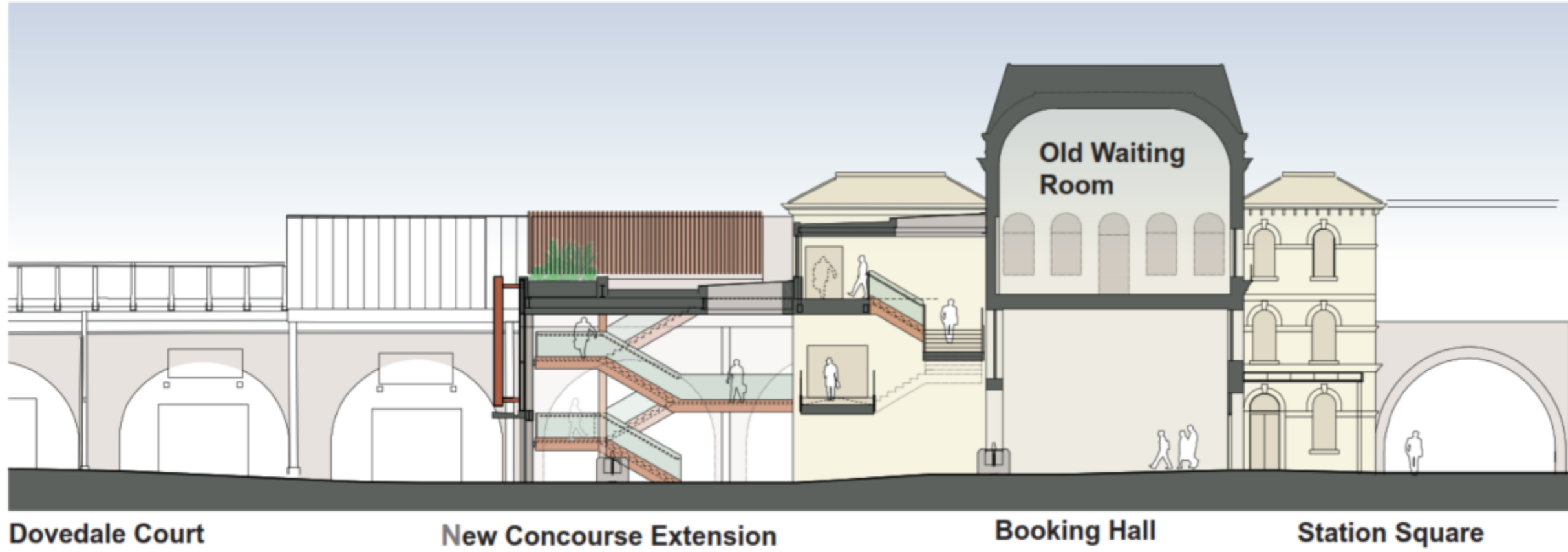
A new stair would be constructed between new platform 2 and concourse below.

The current design allows for this with minimal future disruption.

North



Layouts - East-West Section (North Facing)



Layouts - North-South Section (East Facing)

