

# Our vision for European Healthcare in 2030



We see healthcare as a connected and resilient system centered around people, supported by technology.

## Personalized healthcare centered around patients' needs



A holistic approach covering all aspects of a person's health, starting with prevention.



Precision medicine based on collaboration at defining moments along the care pathway by connecting technology, data, and care teams.



## Accessible healthcare for everyone across the European Union



Equitable access to quality healthcare, including medical and digital health technologies, for all citizens across the EU.



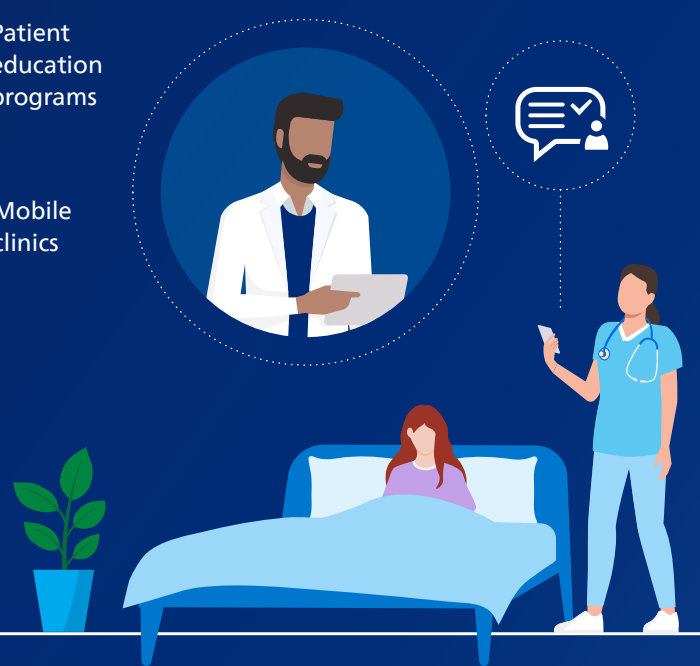
Effective investment and financial support across Member States and regions based on shared targets and aligned milestones.

## Meet patients where they are by extending care beyond hospital settings

Quality care available through a wide array of virtual and in-person access points:

- Nutritional services
- Mental health services
- Patient education programs
- Surgery centers
- Walk-in centers
- Mobile clinics
- Acute care at home
- Community health workers or nurses
- Ambulatory care centers
- Emergency care outside hospitals

Remote support for critical or intensive care by skilled professionals at the bedside.



## A positive work environment for health professionals



Health professionals are freed from repetitive tasks that get in the way of providing patient care.

Efficient processes with the help of technology:



Patient flow



Staff and resource allocation

Online portals to track patient outcomes and remote monitoring technologies can help providers intervene earlier through proactive community care.

## Connected and integrated health data across care settings

Data linked between hospital and home using Internet of Things (IoT) and cloud-based technologies.



1. Actionable insights at scale, whenever and wherever they are needed, via AI and data analytics.

2. Smart patient monitoring can detect early signs of patient deterioration using AI predictive analytics.

3. Tele-ICU can extend critical care to the bedside regardless of location.

## Sustainable healthcare systems for optimal human and environmental health

### Carbon-free healthcare and supply chains

Virtual care helps reduce the need for travel and paperwork, which offsets some of the sector's carbon footprint.

European data from 2020 and 2021 found an average of<sup>1</sup>:



**3.057kg** of net CO<sup>2</sup> emissions avoided for every digital appointment



**1.5kg** avoided for every medical report downloaded instead of printed and collected

**Circularity in the health sector** for more resilient supply chains, low-carbon solutions and longer life cycles.

The carbon footprint of a refurbished MR system is up to **45% lower** than a new one\*



## Prepared for the next crisis



Healthcare systems and infrastructure resilient to environmental-, health- or military-related threats.



Effective stockpiling and priority access to components and medical equipment material.

1. Morcillo Serra, C., Aroca Tanarro, A., Cummings, C.M. et al. Impact on the reduction of CO2 emissions due to the use of telemedicine. Sci Rep 12, 12507 (2022). <https://doi.org/10.1038/s41598-022-16864-2>

\* Based on LCA using ReCiPe2008 and ecoinvent 3.8 database, for a refurbished MR Ingenua Omega HD compared to a new MR Ingenua Omega HD, used in Paris, France and refurbished in Best, the Netherlands.