

RECOMMENDED INSTALLATION

# XI-WOB™

## COMPONENT ASSEMBLY

**Xi-Wob™  
BRACKET ASSEMBLY**  
(Complete with engine module)  
XIW3BRASM-UP3

### ENGINE MODULES

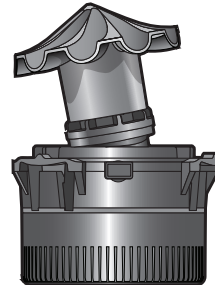
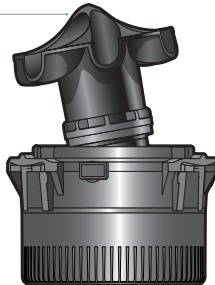
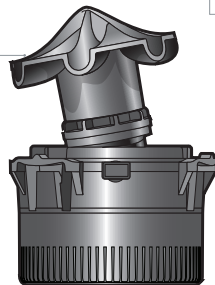
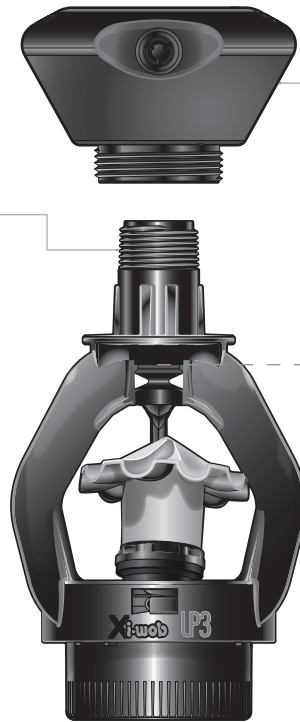
**610:** 6-groove,  
10 degree  
XIWEMASM610  
(blue deflector)

**615:** 6-groove,  
15 degree  
XIWEMASM615  
(black deflector)

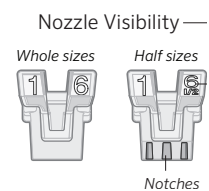
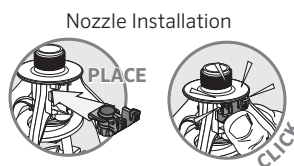
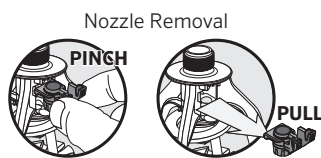
**910:** 9-groove,  
10 degree  
XIWEMASM910  
(grey deflector)

**UNIVERSAL  
MAGNUM WEIGHT™**  
0.85 lbs (0.39 Kg)  
UNIMAGWGT

**UP3® NOZZLES**  
#07 - #24  
UP3NZ07 - UP3NZ24  
(Depending on deflector)



## UP3 NOZZLE REMOVAL AND INSTALLATION



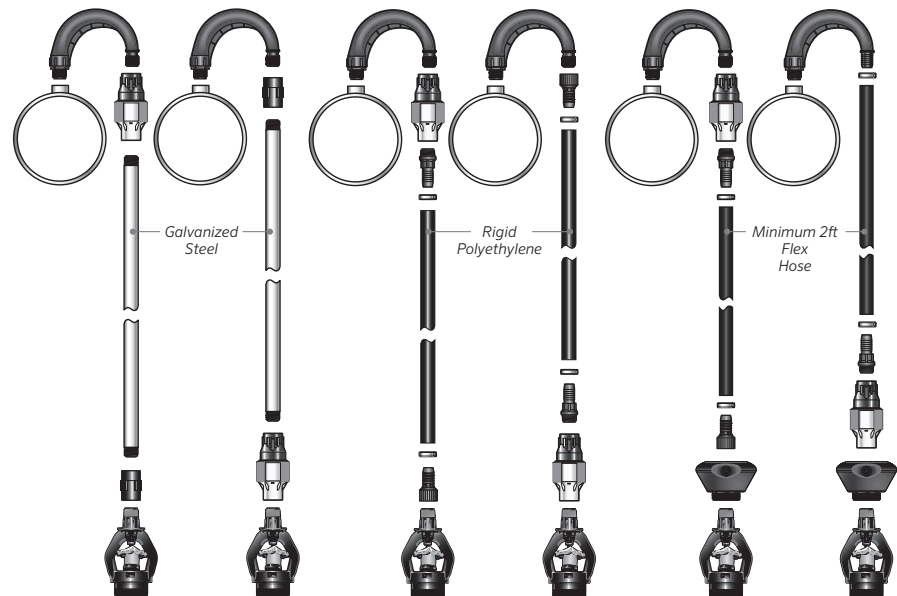
## Installation Specifications

### XI-WOB™ SYSTEM ASSEMBLY

- The Xi-Wob is designed for mounting on semi-rigid Polyethylene or steel drops. Do not use PVC.
- Mount the Xi-Wob no more than 1 ft (0.3m) below the truss rod when using semi-rigid or steel drops.
- The Xi-Wob is suitable for flexible hose installations when a drop weight is used. When using the Senninger Universal Magnum Weight, thread onto the Xi-Wob bracket base.

### PRESSURE REGULATOR LOCATION

- Pressure regulators can be installed at the top of the drop or near the applicator.
- Follow your customized printout for proper pressure regulator placement.



Important: To maintain product warranty and maximize drop component life, refer to the diagrams.

XI-WOB SYSTEM DESIGN CRITERIA	610 (blue) 6-Groove, 10-degree Medium Droplets	615 (black) 6-groove, 15-degree Large Droplets	910 (gray) 9-groove, 10-degree Small Droplets
<b>Nozzle Sizes</b>			
Minimum	#7 7/64" (2.78 mm)	#10 5/32" (3.97 mm)	#10 5/32" (3.97 mm)
Maximum*	#24 3/8" (9.53 mm)	#24 3/8" (9.53 mm)	#24 3/8" (9.53 mm)
<b>Flows</b>			
Minimum	1.09 gpm (248 L/hr)	2.24 gpm (509 L/hr)	2.24 gpm (509 L/hr)
Maximum	15.8 gpm (3584 L/hr)	15.8 gpm (3584 L/hr)	15.8 gpm (3584 L/hr)
<b>Diameters</b>			
Minimum at 3ft (0.91m)	30 ft (9.1m)	38 ft (11.6.1m)	33 ft (10.1m)
Maximum at 3ft (0.91m)	41 ft (12.5m)	43 ft (13.1m)	36 ft (11.0m)
Minimum at 6ft (1.83m)	35 ft (10.7m)	43 ft (13.1m)	38 ft (11.6m)
Minimum at 6ft (1.83m)	45 ft (13.7m)	50 ft (15.2m)	43 ft (13.1m)
Maximum at 9ft (2.74m)	37 ft (11.3m)	46 ft (14.0m)	43 ft (13.1m)
Minimum at 9ft (2.74m)	47 ft (14.3m)	55 ft (16.8m)	50 ft (15.2m)
<b>Maximum Spacing**</b>			
at 6 ft (1.8 m) ground clearance	18 ft (5.49 m)	20 ft (6.10 m)	18 ft (5.49 m)
at 9 ft (2.74 m) ground clearance	18 ft (5.5 m)	20 ft (6.10 m)	18 ft (5.49 m)
<b>Pressure at the Nozzle</b>			
Minimum	10 psi (0.69 bar)	10 psi (0.69 bar)	10 psi (0.69 bar)
Maximum	15 psi (1.03 bar)	15 psi (1.03 bar)	15 psi (1.03 bar)

\* It is recommended that larger nozzle sizes be used only on soils that can handle higher application rates.

\*\* For optimum performance, Senninger recommends the use of maximum spacing for 1-2 spans only.

Note: When outlet spacing exceeds 10 ft (3 m), keep the Xi-Wobs above crop canopy level. This is especially important on high profile crops. Not warranted for rigid installation on offsets or booms longer than 10.5 ft (3.2 m). Longer offsets and booms require a minimum 2 ft (0.61 m) reinforced flex hose.