



SAP Signavio 

SAP Solution in Detail | PUBLIC
SAP Signavio Solutions | SAP Signavio Process Explorer

Accelerate Time to Value with Collective Knowledge at Your Fingertips

Table of Contents

- 3 Quick Facts**
- 4 SAP® Signavio® Process Explorer:
Your Gateway to Value**
- 5 Different Learning Paths for the Needs
of Different Roles**
- 7 A Glimpse at What’s Available to You**
- 13 The Right Value Accelerators at Each
Step of Your Transformation Journey**
- 14 Five Reasons to Choose SAP Signavio
Process Explorer**
- 16 SAP Signavio Process Explorer:
A Key Component of SAP Signavio
Process Transformation Suite**

Quick Facts

Summary

The SAP® Signavio® Process Explorer solution is your gateway to accessing and exploring a myriad of value accelerators and resources that can help you speed up the time to value for your business projects. The value accelerators include business capability and solution maps, process models, metrics, industry best practices, and SAP best-practice and product recommendations.

The value accelerators featured within SAP Signavio Process Explorer represent the collective knowledge from thousands of transformation projects supported by SAP solutions and the SAP partner ecosystem.

SAP Signavio Process Explorer is enabled by the One Process Acceleration Layer practice – which is how we generate, collect, organize, and share value accelerators.

Objectives

- Speed up your projects, both incremental and transformational
- Avoid the complexity, costs, and time involved in starting from a blank page
- Improve performance and align with the latest best practices and industry standards
- Mitigate project risks
- Foster a culture of learning and collaboration

Solution

- A vast collection of value accelerators and resources – all at your fingertips
 - Different entry points and learning paths serving the needs of different roles
 - Process models connected to recommended metrics, products, and innovations
 - Live content that is generated from a global community of process experts
-

Benefits

- Accelerate time to value by applying preconfigured models built around your specific needs
 - Challenge your process landscape, leveraging best-practice processes and metrics
 - Act confidently and avoid errors and reworking by applying proven best practices used by many of your peers
 - Find inspiration and disseminate knowledge, aligning your teams with a single source of truth
-

Learn more

Find out more about SAP Signavio Process Explorer by visiting us [online](#).

SAP® Signavio® Process Explorer: Your Gateway to Value

“How can I more easily scope my transformation program?”
“How do I speed up my project and mitigate risks?”
“How do I make sure I am aligned with the latest best practices?”

Businesses are asking themselves these questions at a time when they are under pressure to rethink the way they operate, sell, deliver, and interact with customers. And in an environment of unparalleled volatility and disruption, the call is not only to **transform but also do it well and faster** to avoid losing momentum.

The SAP® Signavio® Process Explorer solution provides you with a myriad of value accelerators and resources that can help you transform faster and smarter while staying on top of market requirements (see Figure 1).

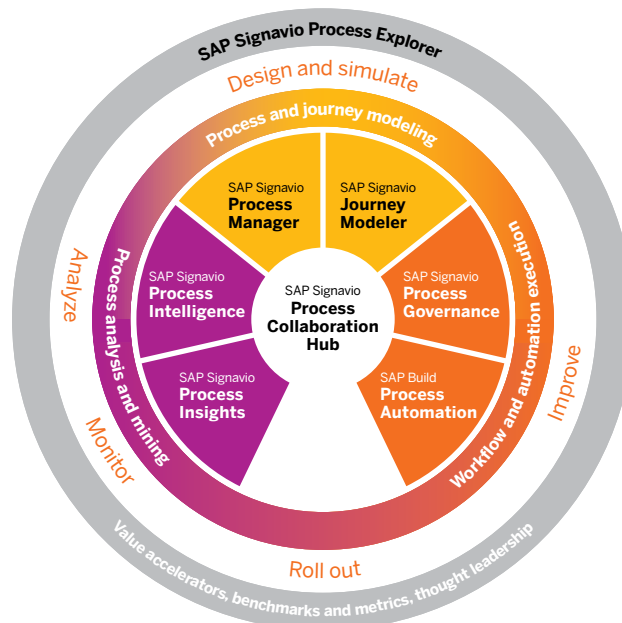
Regardless of whether you are transforming an existing process, starting a new business model, or undergoing a large IT transformation, SAP Signavio Process Explorer can help. For example, if you’re transitioning to SAP S/4HANA® using the RISE with SAP solution, you can use

SAP Signavio Process Explorer to quickly find the answers you need. The solution helps you execute faster while avoiding the complexity, time, and costs of starting from a blank page.

Value accelerators and resources featured within SAP Signavio Process Explorer include:

- **>7,000** business process models
- Capability maps for **20** business domains
- Value accelerators for **13** industries, with more to come
- Metrics and product recommendations

Figure 1: SAP Signavio Process Explorer, a Key Component of SAP Signavio Process Transformation Suite



Different Learning Paths for the Needs of Different Roles

Business and process owners, transformation leads, process and solution consultants, enterprise architects, value accelerators, and all other resources featured within SAP Signavio Process Explorer are organized in a structured and intuitive manner to meet your specific needs.

Based on your role and challenges, the solution can help you select a starting point and learning path that are suitable for your needs while aligning with colleagues on a common source of truth (see Figure 2).

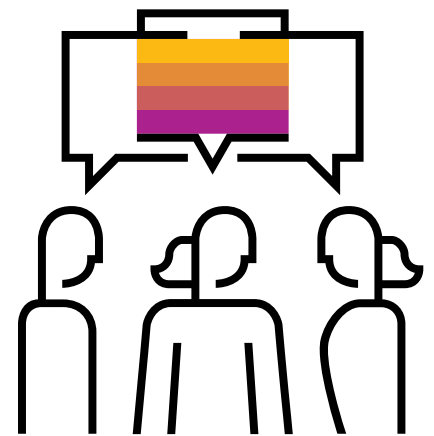
Figure 2: Access Points and Learning Paths That Serve the Needs of Different Roles



Importantly, while different learning paths are provided, the value accelerators and resources within SAP Signavio Process Explorer don't sit in silos. Processes on the business level are connected to the technical capabilities and solutions relevant to that process so that you can map your technology initiatives to your business needs.

Content is live, and it's generated and enriched by a community of process experts working side by side with global industry leaders so that you're exposed to the latest best practices and innovations.

SAP Signavio Process Explorer provides value accelerators and intelligent resources, helping you transform your company into an intelligent and sustainable enterprise.



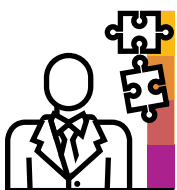
Selecting Your Starting Point



Are you a process owner wishing to improve source to pay and make your supply chain more sustainable and resilient? You might want to begin your investigation from a process perspective.



Are you an enterprise architect willing to facilitate alignment between strategic business goals and the IT landscape? You might want to look at the business capability maps.



Are you a solution consultant working on a large transformation with SAP S/4HANA? You might want to explore value accelerators starting from SAP's product portfolio and access the foundational templates that can help you jump-start your project.

A Glimpse at What's Available to You

SAP Signavio Process Explorer provides access to the following value accelerators and resources.

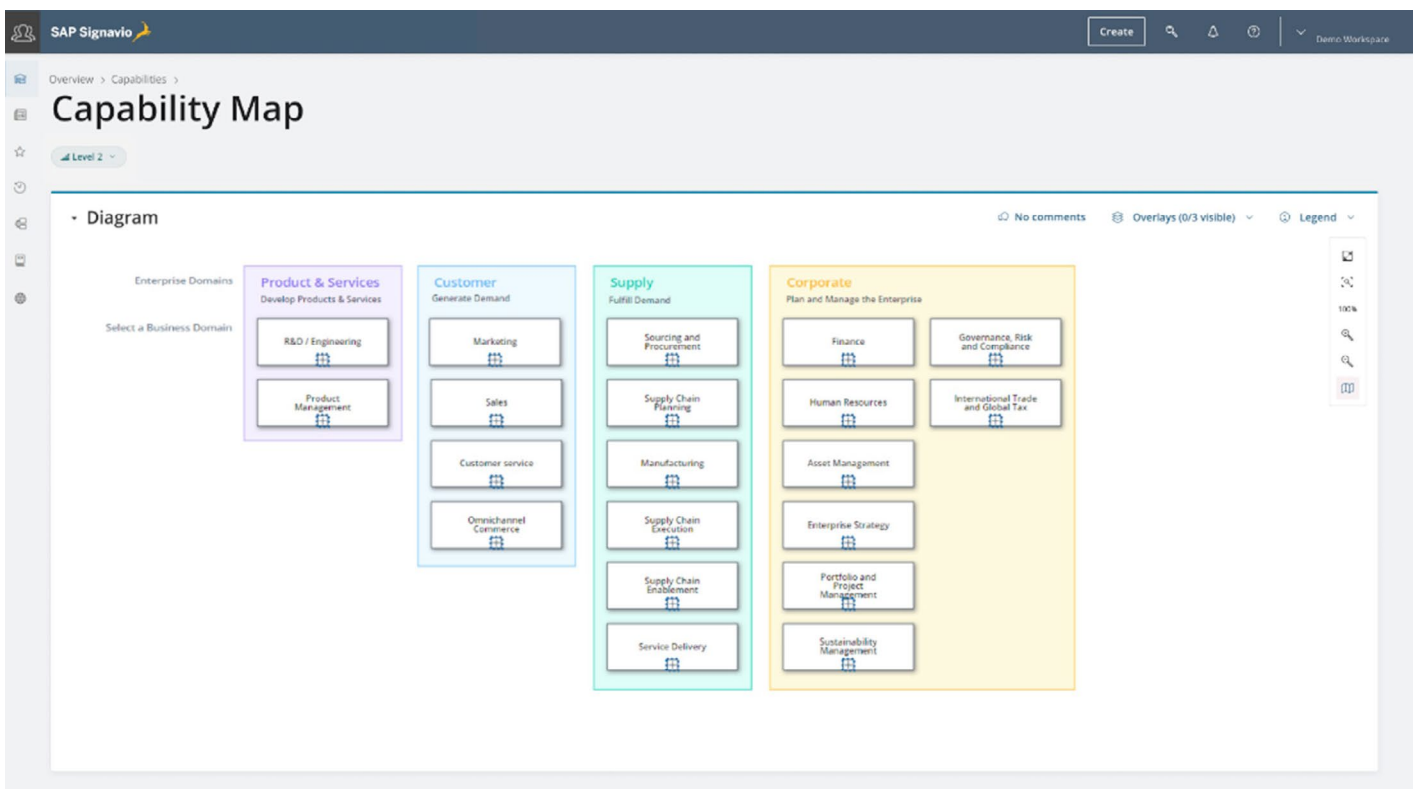
BUSINESS CAPABILITY AND SOLUTIONS MAPS

Business capability and solution maps define **what** the enterprise does and help identify supporting solutions (see Figure 3). Executives, business consultants, business owners, and enterprise architects can use these maps to identify areas of improvement, as well as areas on which future IT investments should focus to support the business.

BENEFITS

- Align IT strategically with the business and focus on the initiatives that can create real value
- Identify gaps and opportunities for IT investments more easily
- Get an instant view of how the project relates to and impacts different business domains

Figure 3: Capability Maps for 20 Business Domains from SAP Signavio Process Explorer



SOLUTION-INDEPENDENT BUSINESS PROCESS MODELS

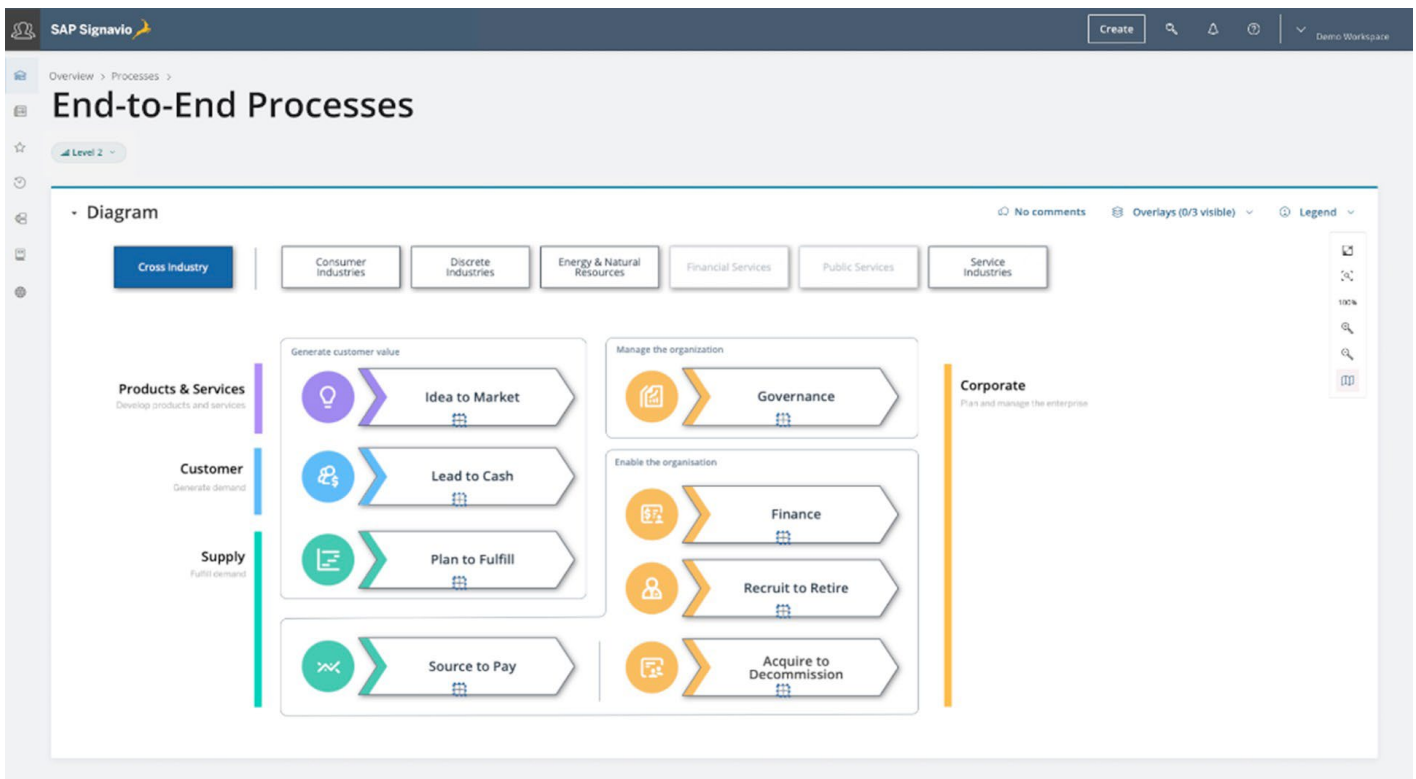
Using different views and diagrams, business process models showcase the sequential steps, events, tasks, and roles of a specific business process. Starting with end-to-end processes (such as lead to cash, idea to market, plan to fulfill, source to pay, and finance) that come with dozens of variants, the solution provides thousands of process models (see Figure 4). The process models work as foundational templates when transforming an existing process or when introducing a new business model. SAP Signavio Process Explorer builds the bridge from solution-independent process models to the SAP solution ecosystem, mapping SAP solutions to the process.

You can now get access to a digital version of the process diagram, which – when being imported into your SAP Signavio solutions – can be adjusted based on your company’s requirements and used as a blueprint to design and run the process.

BENEFITS:

- Understand your end-to-end processes and scope the transformation project accordingly
- Set up a process architecture landscape more easily – you can access product-specific or agnostic content regardless of whether you currently have SAP products installed or have third-party solutions in your landscape
- Accelerate time to action and quickly bring processes to life by leveraging proven and repeatable workflows

Figure 4: Thousands of Process Models from a Start of Eight Comprehensive Business Processes



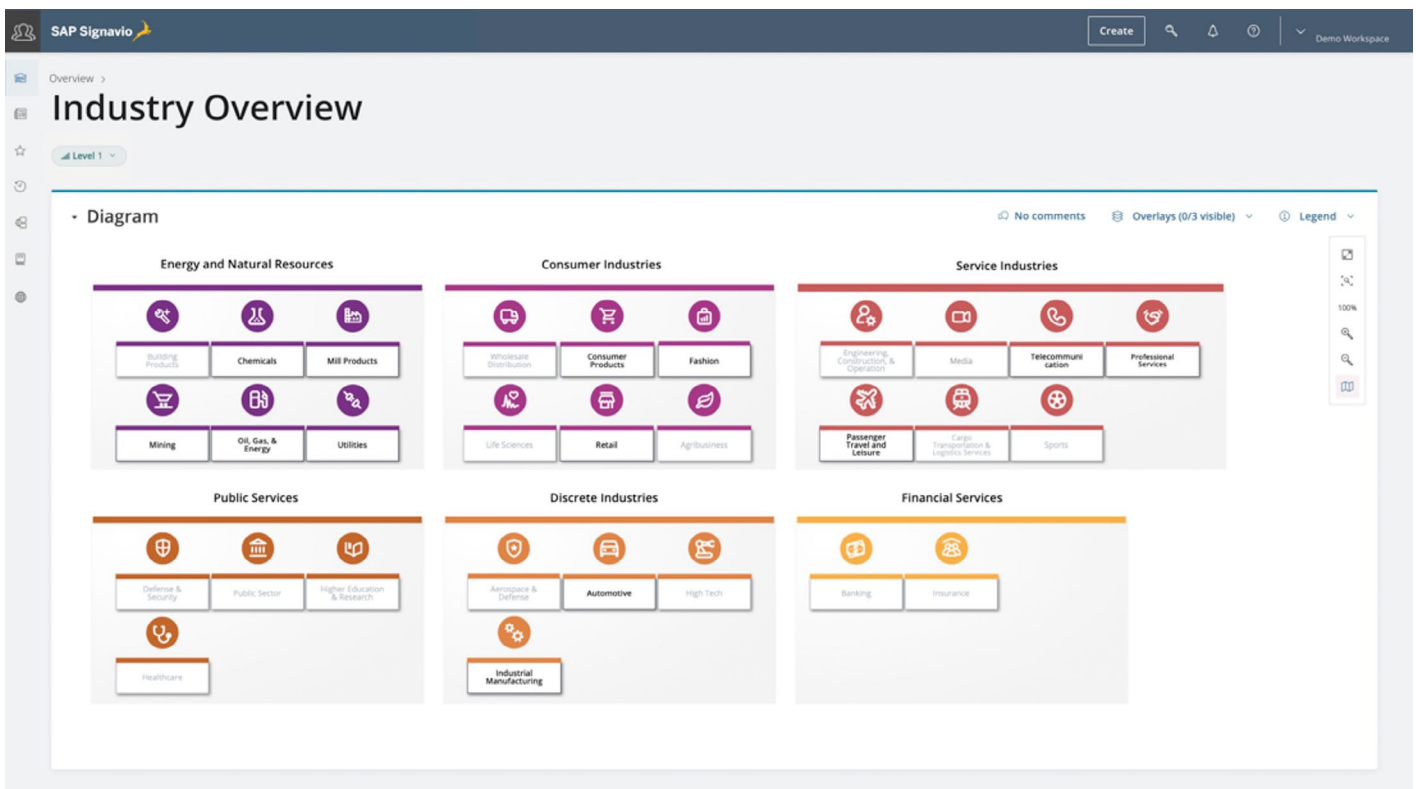
INDUSTRY-SPECIFIC VALUE ACCELERATORS

SAP Signavio Process Explorer provides industry-specific value accelerators for 13 sectors, with more to come in future releases (see Figure 5). These include process models as well as associated metrics and innovation recommendations for selected scenarios. Content is generated from the experience of SAP professionals working side by side with industry leaders on a global scale.

BENEFITS

- Access guidelines and templates that serve the unique needs of your industry
- Act confidently, leveraging processes designed by SAP global industry experts
- Enable faster transformation and continuous improvements by leveraging process models that are connected to metrics and innovation recommendations

Figure 5: Industry-Specific Value Accelerators



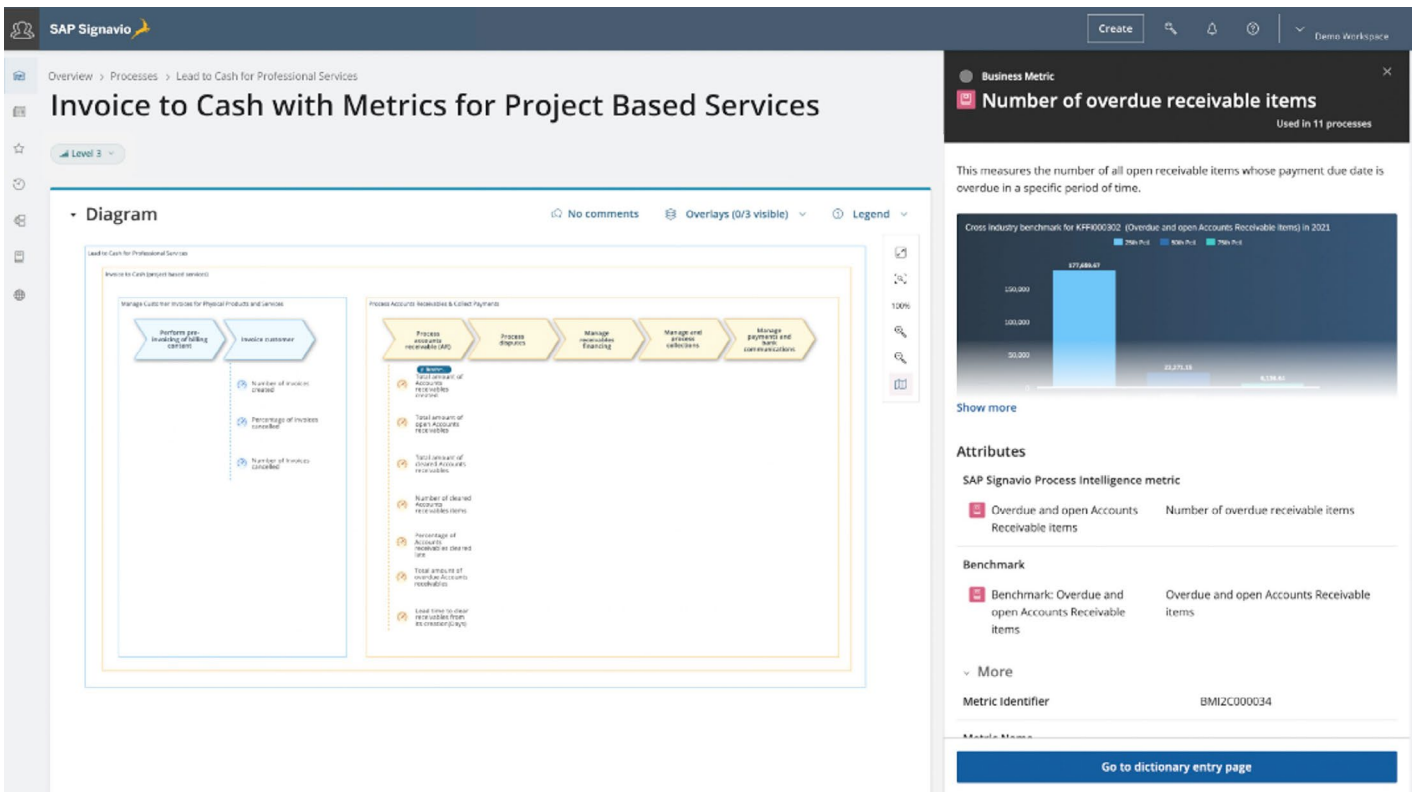
METRICS AND INNOVATION RECOMMENDATIONS MAPPED TO PROCESS MODELS

For selected scenarios, metrics are mapped to process models to support a continuous improvement journey (see Figure 6). Customers can visualize the available ready-to-use metrics and innovation recommendations that can speed up time to insight and time to adapt.

BENEFITS

- Understand where to focus and where there are potential areas for improvements
- Challenge your process landscape, leveraging best-practice processes and metrics
- Improve time to insight and make data-driven decisions

Figure 6: Business and Solution Metrics and Innovation Recommendations



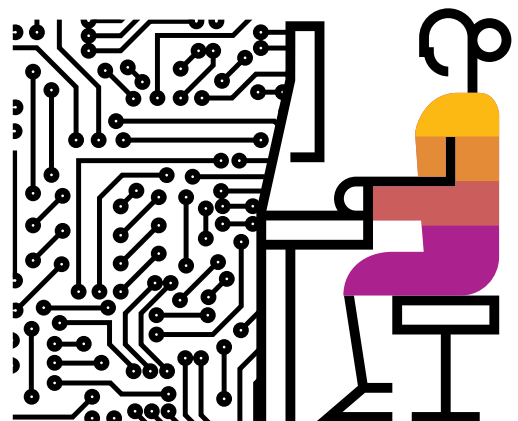
SAP BEST-PRACTICE AND PRODUCT RECOMMENDATIONS

SAP Signavio Process Explorer provides a collection of practices and models specifically dedicated to the SAP solution portfolio – for example, supporting customers in their implementations of SAP S/4HANA. The solution provides predefined process blueprints that represent the basis for fit-to-standard evaluations. Innovation recommendations are also delivered to support post-transformation incremental and continuous improvement.

BENEFITS

- Reduce customizations by designing processes that represent a perfect match to the specific SAP solution
- Make your project costs and time more predictable by adopting standardized processes
- Save time for your teams to focus on those processes and tasks that cannot be standardized but that are part of your DNA

With SAP Signavio Process Explorer, technological innovation is mapped to business needs. This helps close the gap between IT and business, so you can execute strategy more quickly with the ideas and solutions you need for a successful project.



COMMUNITY-CREATED CONTENT

SAP Signavio Process Explorer offers an open program for partner collaboration, which means partners who are innovators in their specific domain can also deliver value accelerators. Together with our partner ecosystem, we represent a dynamic community of process, technology, and industry experts who work side by side with our customers, share best practices, and continuously shape new ideas and solutions that respond to your evolving needs.

BENEFITS

- Access best practices from SAP and SAP partners that are innovators in their domains
- Leverage SAP partner accelerators linked to knowledge from SAP experts
- Benefit from a simpler, more seamless experience that addresses your needs in one centralized place

“SAP Signavio Process Explorer provides the collective knowledge of thousands of business transformation projects – all centralized and ready to use.”

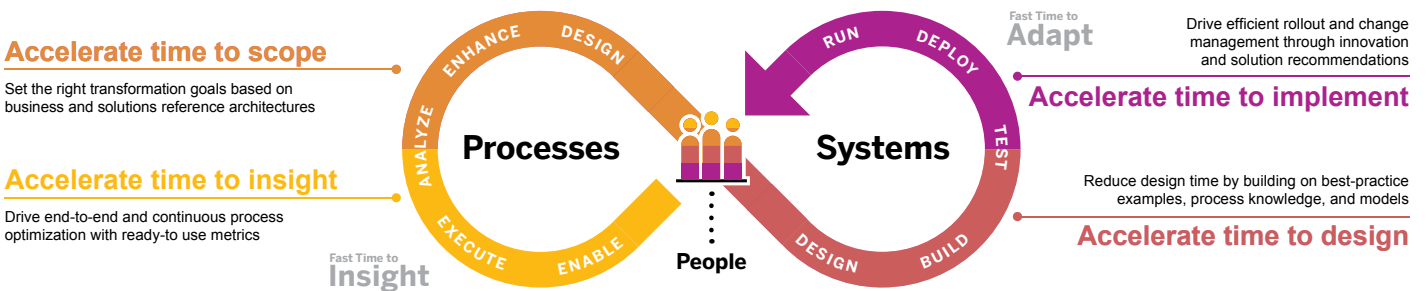
Robert Weller, Head of the Value Accelerator Delivery Team, SAP Signavio

The Right Value Accelerators at Each Step of Your Transformation Journey

Whether you are transforming an existing process, starting a new business model, or going through a large IT or digital transformation, SAP Signavio Process Explorer can offer you support. From strategy to operations, value accelerators and resources featured within the solution help speed up the various phases of your transformation journey (see Figure 7).

The solution can help you accelerate your time to insights with metrics, fast-track your project, and reduce scoping times by leveraging reference business architectures. Preconfigured process models can help you design your processes better and faster, and you can accelerate time to action and deployments by applying product best practices and innovation recommendations. After implementation, you can also monitor your success and constantly fine-tune your strategy and operations for continuous improvement.

Figure 7: How SAP Signavio Process Explorer Helps Speed Up Your Transformation Journey

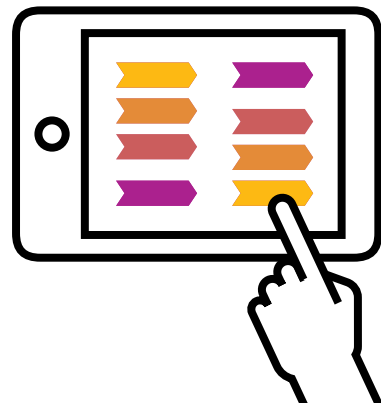


Five Reasons to Choose SAP Signavio Process Explorer

Explore these five reasons to choose SAP Signavio Process Explorer.

- 1.** Gain holistic and comprehensive support for your transformation and continuous improvement journey, accelerating your time to insight and time to adapt.
- 2.** Leverage the accelerators you need to transform in one place, and avoid the complexity of accessing fragmented content frameworks and disconnected tools.
- 3.** Meet your unique requirements by serving different roles, business domains, and industries with solutions and content that are specific to your challenges.
- 4.** Access SAP solution-specific and solution-independent value accelerators, providing you with guidelines and inspiration.
- 5.** Benefit from the collective knowledge of thousands of transformation projects delivered by SAP experts and the SAP global ecosystem.

Accelerate time to value by applying preconfigured models to avoid the complexity and time of starting from a blank page.



BENEFITS OF SAP SIGNAVIO PROCESS EXPLORER FOR YOUR ORGANIZATION

Typical Pitfalls Causing Time and Cost Overruns in Projects

Typical Pitfalls Causing Time and Cost Overruns in Projects	Solution Capabilities	Benefits
Unclear goals and poorly defined innovation paths	Access to value accelerators (such as reference business and solution architectures, metrics, and innovation recommendations) to clearly set your goals and innovation paths	<ul style="list-style-type: none"> • Get guidance and inspiration • Avoid the complexity, time, and costs of starting from a blank page • Better define the “why,” “how,” and “what” of your transformation
Inability to blend the technical and business perspective	Processes on the business level that are connected to the right metrics and technical capabilities, including recommended products, helping you consistently map your technology initiatives to business needs	<ul style="list-style-type: none"> • Connect the dots from strategy to execution • Close the typical gap between IT and the business • Focus on the higher-value uses cases and technology initiatives
Errors and reworking	Prebuilt models and solutions that are proven and used by many	<ul style="list-style-type: none"> • Draw on the experience of peers • Act confidently and mitigate project risks • Do things right the first time and deploy smoothly
Lack of buy-in from stakeholders	<ul style="list-style-type: none"> • A single source of truth for stakeholders involved in the transformation • Different learning paths, learning formats, and granularity levels that make it easier to share knowledge 	<ul style="list-style-type: none"> • Disseminate knowledge more easily • Help bring your teams up to speed rapidly and gain commitment
Lack of performance measurement to validate choices and react fast if appropriate	Metrics, helping you quickly understand where improvements can be made	<ul style="list-style-type: none"> • Know where you stand compared to your peers • Set your targets correctly • Monitor results to validate direction and improve continuously

SAP Signavio Process Explorer: A Key Component of SAP Signavio Process Transformation Suite

Value accelerators featured within SAP Signavio Process Explorer serve different products within SAP Signavio Process Transformation Suite.

When imported into your SAP Signavio Process Manager solution workspace, process models and diagrams can be adapted to your unique needs and made actionable. Diagrams can also be published to SAP Signavio Process Collaboration Hub to align participants behind the same operational model.

SAP Signavio Process Explorer connects both business-relevant metrics from the SAP Signavio Process Intelligence solution and the innovation recommendations from the SAP Signavio Process Insights solution directly to a set of dedicated process models. This is a major benefit of the solution, aligning business and IT in one place.

One Process Acceleration Layer

We understand that speed is of the essence in today's environment, and we aim to help our customers be fast and efficient in transformation. To this end, we invested in the One Process Acceleration Layer practice for SAP solutions. This practice enables SAP Signavio Process Explorer and is how we generate, collect, and share value accelerators and intelligent resources.

With One Process Acceleration Layer, we strive to provide you with not only the best technology but also ideas, recommendations, foundational templates, thought leadership papers, and ready-to-run solutions. These offerings can help you compress your time to operations and accelerate time to value.

The One Process Acceleration Layer practice leverages 50 years of our process and industry experience side by side with industry leaders, as well as expertise and knowledge coming from the SAP ecosystem.

SAP Signavio Process Explorer is your gateway to accessing and exploring the myriad of value accelerators generated as part of this practice.

Learn more about our [One Process Acceleration Layer](#) to generate and collate value accelerators.

